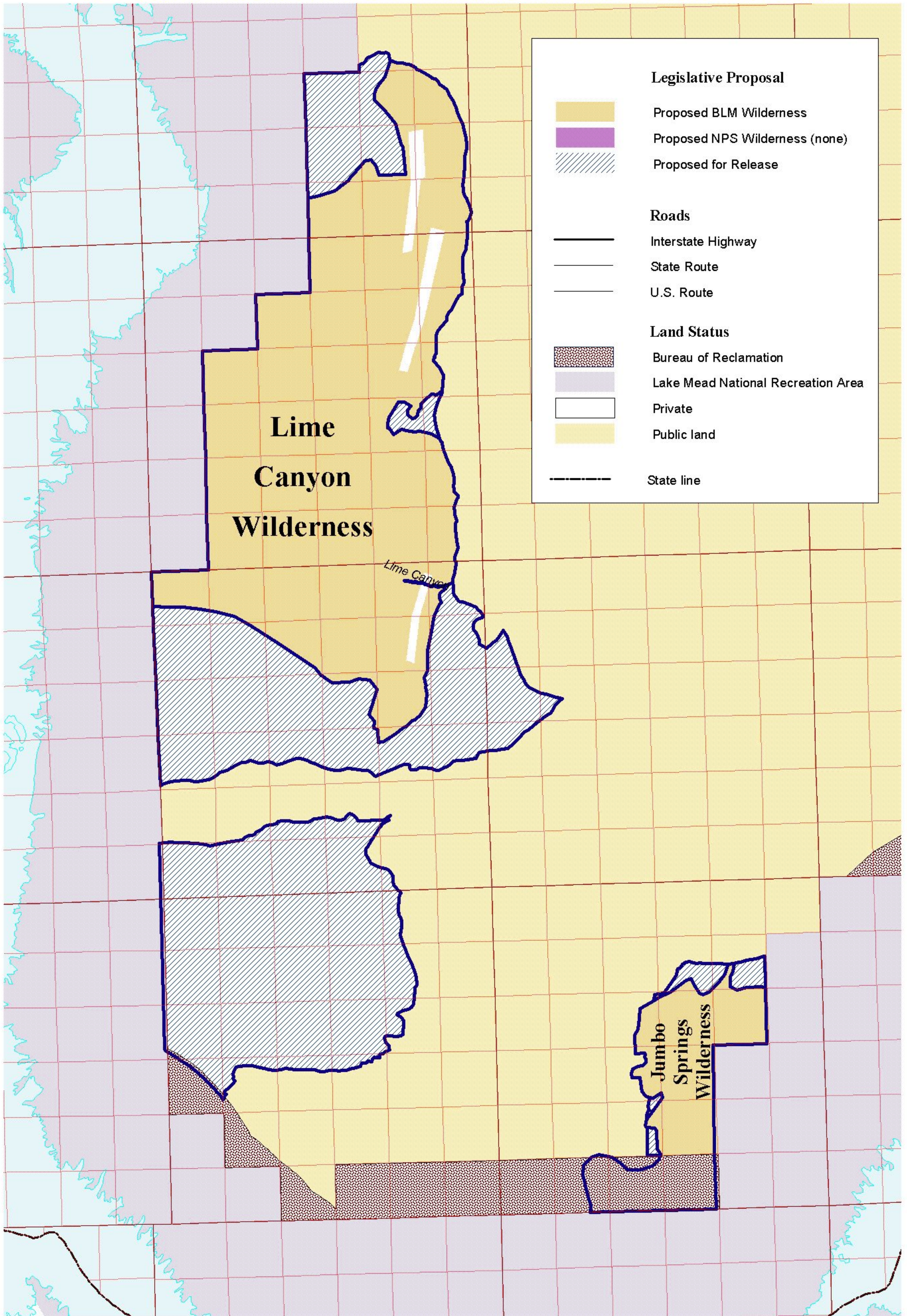


Gold Butte

This map prepared at the request of Senator Harry Reid and Senator John Ensign

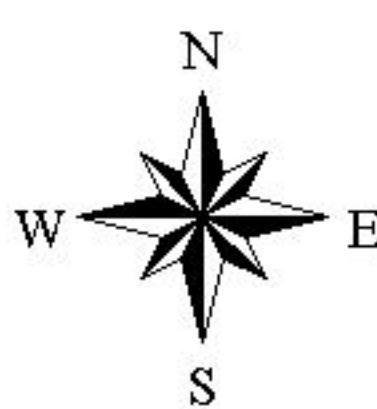
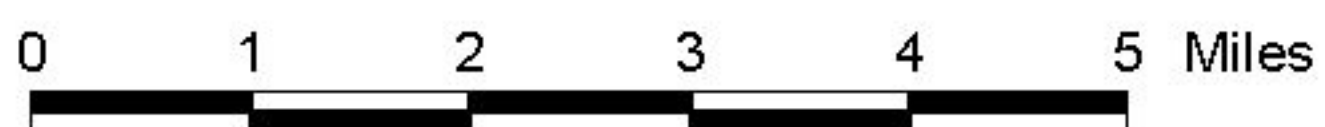


Legislative Proposal	
	Proposed BLM Wilderness
	Proposed NPS Wilderness (none)
	Proposed for Release

Roads	
	Interstate Highway
	State Route
	U.S. Route

Land Status	
	Bureau of Reclamation
	Lake Mead National Recreation Area
	Private
	Public land

State line	
	State line



This map has been provided for public review by the BLM at the request of Senators Harry Reid and John Ensign. If you have any questions about the map or the legislation, please contact:
Kai Anderson/Peter Mali Office of Senator Reid (202) 224-3542
John Lopez Office of Senator Ensign (202) 224-6244