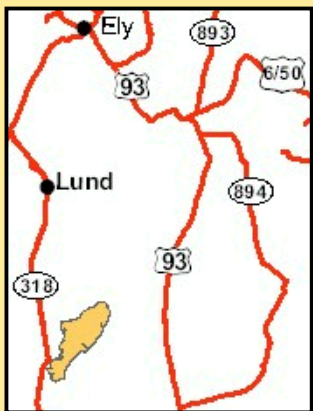
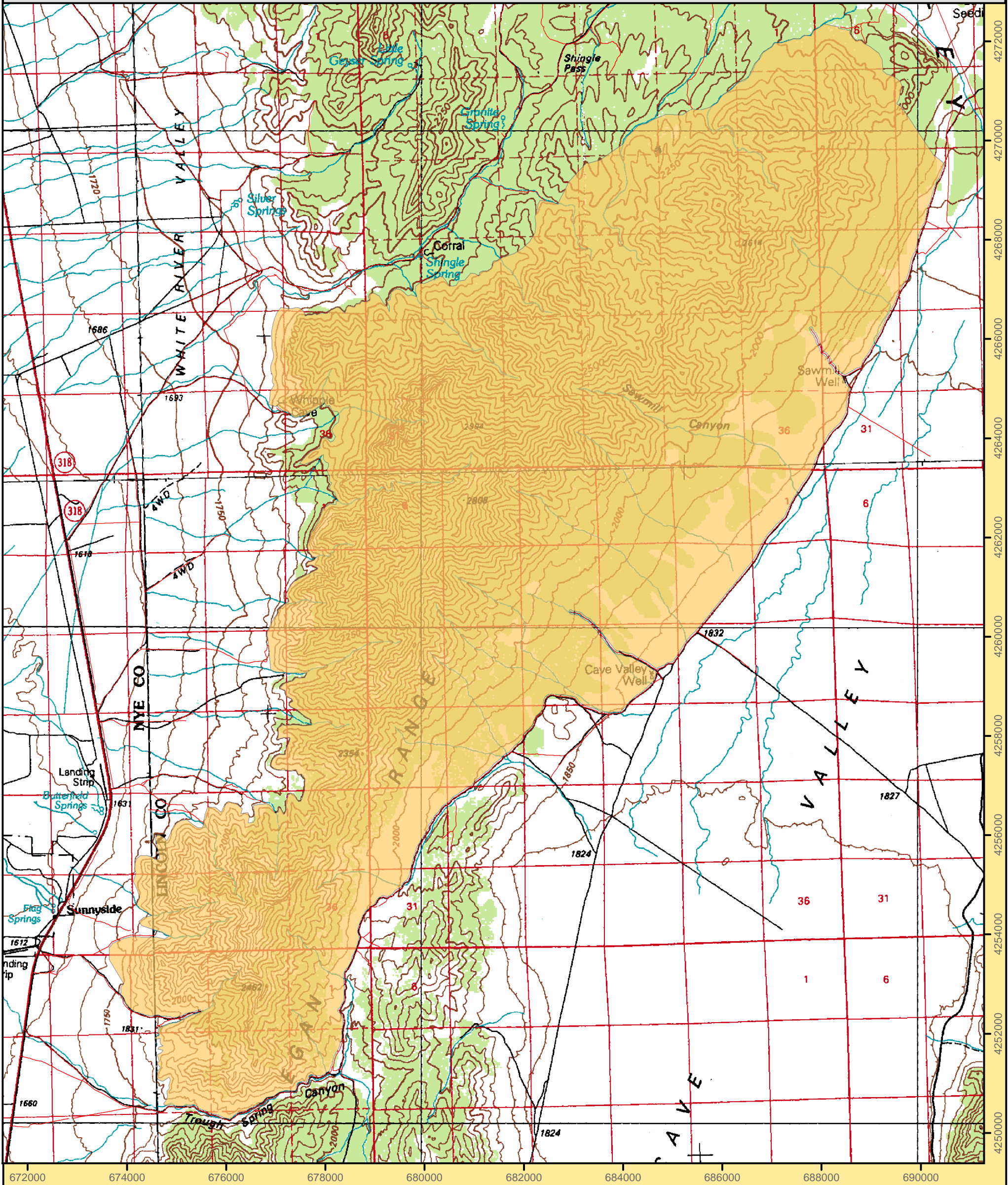


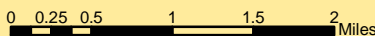
Far South Egans Wilderness Area



Duckwater 1:100,000	Garrison 1:100,000
Moorman Spring SE 1:2400	Shingle Pass 1:2400
Quinn Canyon Range 1:100,000	Wilson Creek Range 1:100,000
Sunnyside 1:2400	Cave Valley Well 1:2400
	Shingle Pass SE 1:2400
	Sidehill Spring 1:2400

Legend

Wilderness Boundary



1:75,128

Projection: Nad 83 Zone 11 North

Ely BLM Field Office
December 2004
For more information call 775-289-1800

U. S. Department of the Interior
Bureau of Land Management

"NO WARRANTY IS MADE BY THE BUREAU OF LAND MANAGEMENT AS TO THE ACCURACY, RELIABILITY, OR COMPLETENESS OF THESE DATA FOR INDIVIDUAL USE OR AGGREGATE USE WITH OTHER DATA."



FACT Sheet

BUREAU OF LAND MANAGEMENT

ELY FIELD OFFICE (Tel: 775-289-1800)
HC Box 33500, Ely, Nevada 89301-9408

Far South Egans Wilderness

36,384 acres

Elevation 5,800 – 9,823 ft

Location

The Far South Egans Wilderness is located in east-central Nevada within Lincoln and Nye Counties. It lies fifty miles south of Ely, 200 miles North of Las Vegas, along U.S. Highway 318.

Getting There

Access to this Wilderness from Ely, Nevada is on federal highway 6 westbound approximately 23 miles, southbound on state highway 318 through the town of Lund approximately 38 miles to Shingle Pass. You may continue down federal highway 6 southbound 8 miles then southeast on BLM road 4055 which turns into the eastern border of the Wilderness.

Area Description

The Far South Egans Wilderness consists primarily of an extremely rugged portion of the Egan Range. The west side of the mountain unit is characterized by spectacularly rugged limestone cliffs with multicolored strata. A mountain range not quite ready to surrender, the Egan Range dramatically ascends 4,500 feet to form the spectacular limestone cliffs of the Far South Egan Range south of Shingle Pass. The area includes an unusual and scenic intermixed Ponderosa and Bristlecone pine forest.

The east side of the Egan Range is less rugged and supports a dense cover of woodlands (pinyon and juniper). Large stands of ponderosa exist at higher elevations (7,000 feet) Mule deer, elk, bighorn sheep, mountain lions, and raptors such as golden eagles and ferruginous hawks are among numerous wildlife species found in the mountains of the Far South Egans Wilderness.

This wild, untrammelled setting provides many excellent opportunities for recreation. Hiking, camping and backpacking are demanding because of the terrain, but very rewarding and pleasurable because of the area's special features (bristlecone and ponderosa pines, an abandoned historic sawmill, high scenic values) and because of the impression that the many hidden places of the area have never before been visited. The exhilaration of discovery extends into the mountains themselves, with spelunking into Whipple Cave. Located in the northwest portion of the wilderness area, Whipple Cave provides 1,000 feet of known passage. Cave decorations include rimstone dams, draperies, and a huge column over thirty feet tall. Passage through the cave's double sink entrance requires a technical 70-foot descent. The cave has sustained regular use, but because of the difficulty of entrance, use has been relatively light and the cave remains in a very natural state.

Technical rock climbers may find challenge all along the western side of the wilderness area. Numerous rock outcrops and cliffs provide opportunities for a wide range of rock climbing. All of these recreational opportunities are available in an area where solitude is a guaranteed characteristic.

Additional Information

Signs indicating "Wilderness" and "Closed Road" or "Closed Route" are placed at various intervals. Vehicles can be parked outside the wilderness boundary; however, the boundary is set back 100 feet on roads.

Mechanized and motorized vehicles are **NOT PERMITTED** in a wilderness area.

Hunting, fishing, and non-commercial trapping are allowed under state and local laws. Pets are allowed, but please keep your pets under control at all times. Horses are permitted, however you may need to carry feed. Removal, disturbance, or attempting to remove archaeological materials is a felony. Selling, receiving, purchasing, transporting, exchanging or offering to do so is prohibited by law.

Camping is permitted, limited to 14 days. After 14 days campers must relocate at least 25 miles from previous site (*interim policy, until wilderness planning is complete*). Gathering wood for campfires, when permitted, is limited to dead and down material. Live vegetation cannot be cut.

Please help preserve Nevada's fragile environments, park your vehicle or set up camp in previously used sites, minimize impacts by practicing Leave No Trace ethics.

Contact Ely Bureau of Land Management Field Office for current weather, road conditions, and hazards.

Maps

USGS 7.5 Quadrangle Maps: Shingle Pass, Shingle Pass SE, Sunnyside, Cave Valley Well, Sidehill Spring

Contact Info:

Ely BLM Field Office

Phone: 775-289-1800

www.nv.blm.gov/Ely

