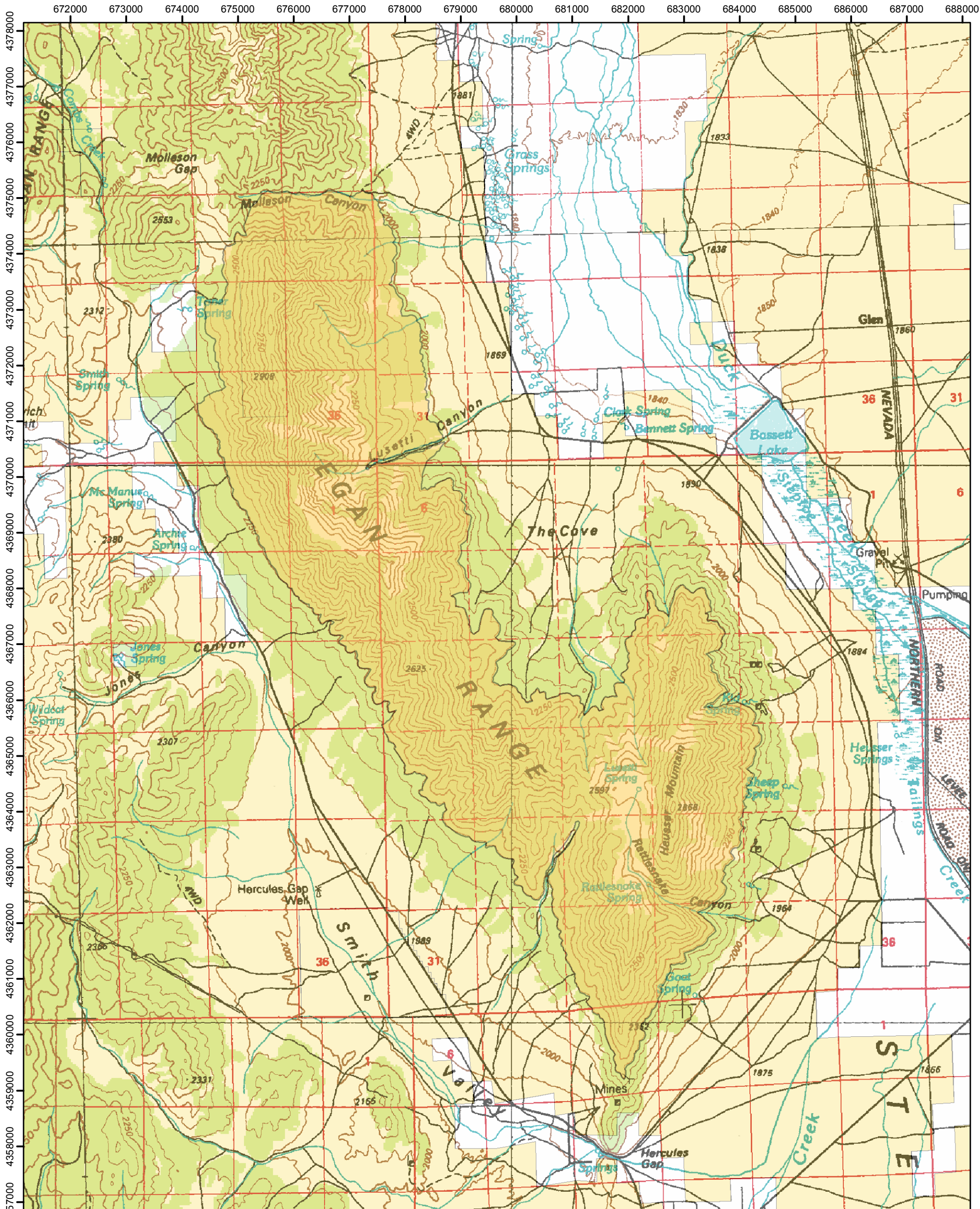
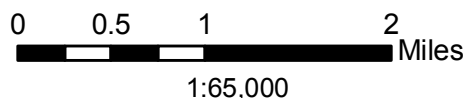




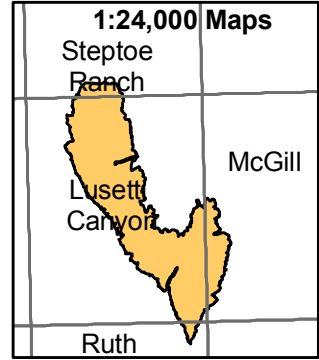
Bristlecone Wilderness Area



Legend
 Wilderness Area



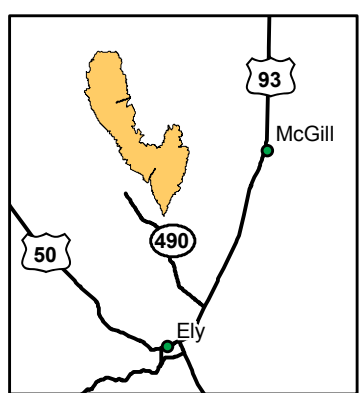
Ely BLM Field Office
 For more information call:
 (775) 289-1800



1:100,000 Maps:
 Ely & Kern Mountains



No Warranty is made by the Bureau of Land Management as to the accuracy, reliability, or completeness of these data for individual use or aggregate use with other data.





FACT Sheet

BUREAU OF LAND MANAGEMENT

ELY FIELD OFFICE (Tel: 775-289-1800)
HC Box 33500, Ely, Nevada 89301-9408

Bristlecone Wilderness Area

14,095 acres

Elevation: 7,380 – 9,859 feet

Location

The Bristlecone Wilderness Area is located in central White Pine County, approximately 5 miles due west of McGill, Nevada, or about 10 miles north of Ely, Nevada.

Getting There

Access to this Wilderness Area is from Ely, north on Highway 93 for 5 miles. Turn left on Highway 490; at the stop sign turn right onto Lackawana Road. After leaving the small community of Cross Timbers, drive about a mile to a dirt road on your right that will take you along the eastern side of the range, or proceed through Hercules Gap to access the west side of the Bristlecone Wilderness Area.

Area Description

The Bristlecone Wilderness Area lies in the Egan Range in eastern Nevada. Vegetation consists primarily of desert brush and grass at the lower elevations and a scattering of pinyon and juniper stands on the upland slopes. Groves of aspen exist in several washes, including Rattlesnake Canyon. This area's namesake, the Bristlecone pine, is found in this Wilderness Area as well.

Recreational opportunities include camping, hiking, backpacking, horseback riding, and hunting. Bristlecone Wilderness Area provides opportunities for solitude in the washes extending from Heusser Mountain (9,409 feet) or tucked back in The Cove. Spectacular views of Steptoe Valley and the Schell Creek Range are afforded those who hike to the top of Heusser Mountain.

Additional Information

Signs indicating "Wilderness" and "Closed Road" or "Closed Route" are placed at various intervals. Vehicles can be parked outside the wilderness boundary.

Mechanized and motorized vehicles are **NOT PERMITTED** in a wilderness area.

Hunting, fishing, and trapping are allowed under state and local laws. Pets are allowed, but please keep your pets under control at all times. Horses are permitted, however you may need to carry feed. Removal, disturbance, or attempting to remove archaeological materials is a felony. Selling, receiving, purchasing, transporting, exchanging or offering to do so is prohibited by law.

As on all Nevada BLM land, camping is permitted and limited to 14 days. After 14 days campers must relocate at least 25 miles from previous site (*interim policy, until wilderness planning is complete*). Gathering wood for campfires, when permitted, is limited to dead and down material. Live vegetation cannot be cut. Please help preserve Nevada's fragile environments, park your vehicle or set up camp in previously used sites, minimize impacts by practicing Leave No Trace ethics.

Contact Ely Bureau of Land Management Field Office for current weather, road conditions, and hazards.

Maps

USGS 7.5 Quadrangle Maps:

Steptoe Ranch
Lusetti Canyon
McGill
Ruth

BLM 1:100,000 Maps:
Ely & Kern Mountains

Contact Info:

Ely BLM Field Office
Phone: 775-289-1800
www.nv.blm.gov/Ely

