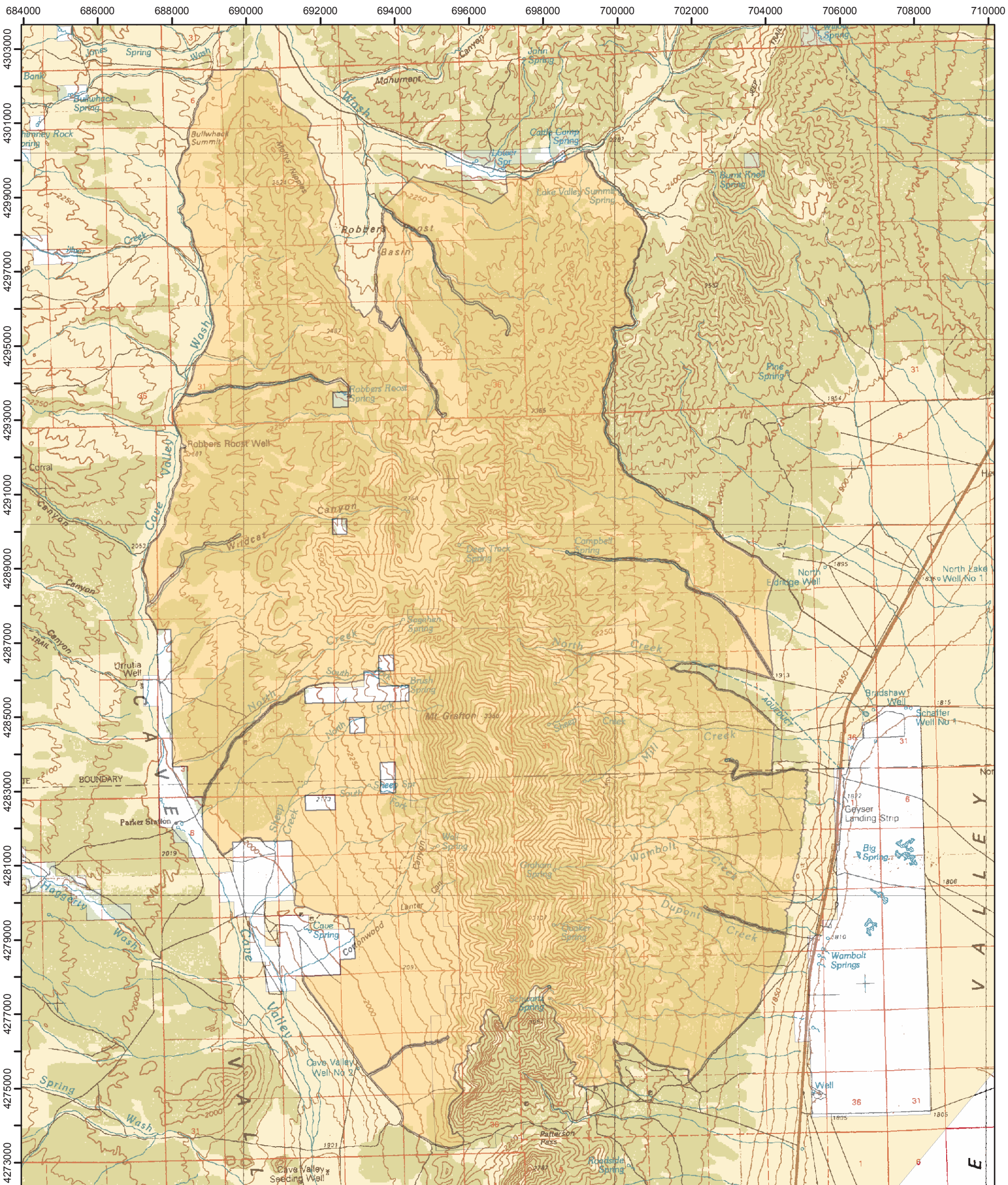




Mt. Grafton Wilderness Area



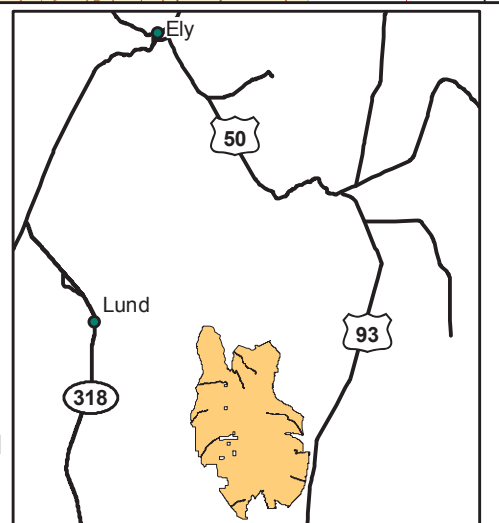
1:24,000 Maps



Ely BLM Field Office
For more information call:
(775) 289-1800



No Warranty is made by the Bureau of Land Management as to the accuracy, reliability, or completeness of these data for individual use or aggregate use with other data.





FACT Sheet

BUREAU OF LAND MANAGEMENT

ELY FIELD OFFICE (Tel: 775-289-1800)
HC Box 33500, Ely, Nevada 89301-9408

Mt. Grafton Wilderness Area

78,743 acres

Elevation 6,000 – 10,991 ft

Location

The Mt. Grafton Wilderness Area is located in the Schell Creek Range in White Pine and Lincoln Counties approximately 30 miles southwest of Ely.

Getting There

Access to the Mt. Grafton Wilderness Area from Ely is via federal highway 93 southbound approximately 50 miles. Highway 93 near Geysers Ranch runs parallel to the east boundary of the WSA.

Area Description

The Mt. Grafton Wilderness Area is extremely rugged with numerous rock outcrops, crags and peaks scattered throughout the high country. The broad slopes of the mountain are host to extensive stands of quaking aspen as well as conifer species including white fir, limber, and bristlecone pine. Large open areas are interspersed among the trees and the edge effect created by this varied vegetation provides excellent habitat for a number of wildlife species, including elk and Rocky Mountain bighorn sheep.

Several creeks rush down from the higher elevations through large aspen groves. North Creek, a designated Scenic Area has a large riparian area and supports one of the few fisheries located entirely on BLM administered lands within the Ely district.



Additional Information

Signs indicating “Wilderness” and “Closed Road” or “Closed Route” are placed at various intervals. Vehicles can be parked outside the wilderness boundary.

Mechanized and motorized vehicles are **NOT PERMITTED** in a wilderness area.

Hunting, fishing, and trapping are allowed under state and local laws. Pets are allowed, but please keep your pets under control at all times. Horses are permitted, however you may need to carry feed. Removal, disturbance, or attempting to remove archaeological materials is a felony. Selling, receiving, purchasing, transporting, exchanging or offering to do so is prohibited by law.

Camping is permitted, and limited to 14 days. After 14 days campers must relocate at least 25 miles from previous site (*interim policy, until wilderness planning is complete*). Gathering wood for campfires, when permitted, is limited to dead and down material. Live vegetation cannot be cut.

Please help preserve Nevada’s fragile environments, park your vehicle or set up camp in previously used sites, minimize impacts by practicing Leave No Trace ethics.

Contact Ely Bureau of Land Management Field Office for current weather, road conditions, and hazards.

Maps

USGS 7.5 Quadrangle Maps:

Bullwhack Summit
Cattle Camp Spring
Parker Station
Mount Grafton
Shingle Pass SE
Milk Ranch Spring

BLM 1:100,000 Map:
Garrison

Contact Info:

Ely BLM Field Office
Phone: 775-289-1800
www.nv.blm.gov/Ely

