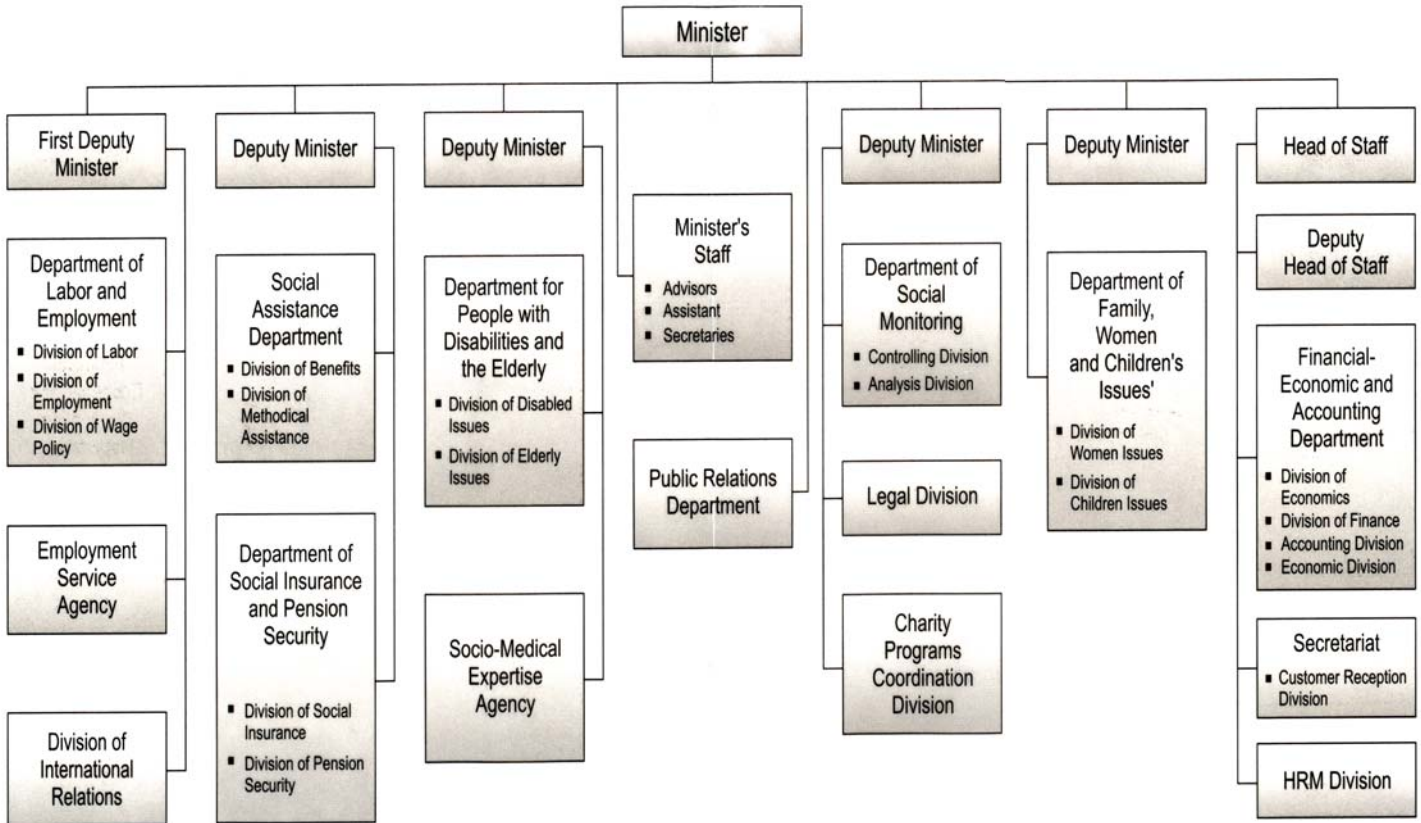


Organigram of Ministry of Labor and Social Issues (MLSI) - Armenia

STRUCTURE OF MINISTRY OF LABOR AND SOCIAL ISSUES



Annex 1 - SPSS

1. Minister

2.1. (a) First Deputy Minister, (b) Deputy Minister, (c) Deputy Minister, (d) Deputy Minister, (e) Deputy Minister, (f) Head of Staff

2.1. (a) First Deputy Minister

- Department of Labor and Employment
 - Division of Labor
 - Division of Employment
 - Division of Wage Policy
- Employment Service Agency
- Division of International Relation

2.1. (b) Deputy Minister

- Social Assistance department
 - Division of Benefits
 - Division of Methodical Assistance
- Department of Social Insurance and Pension Security
 - Division of Social Insurance
 - Division of Pension Security

2.1. (c) Deputy Minister

- Department for People with Disabilities and the Elderly
 - Division of Disabled Issues
 - Division of Elderly Issues
- Socio-Medical expertise Agency

2.1. (d) Deputy Minister

- Department of Social Monitoring
 - Controlling Division
 - Analysis Division
- Legal Division
- Charity Programs Coordination Division

2.1. (e) Deputy Minister

- Department of Family, Women and Children's Issues
 - Division of Women Issues
 - Division of Children Issues

2.1. (f) Head of Staff

- Deputy Head of Staff
- Financial –Economic ad Accounting department
 - Division of Economics
 - Division of Finance
 - Accounting Division
 - Economic Division
- Secretariat
 - Customer reception division
 - HRM Division

2.2. Minister's Staff

Advisors

Assistant

Secretaries

2.3. Public Relations Department