



# CDC's Tracking Program

Michael A. McGeehin, Ph.D., M.S.P.H.

Director, Environmental Hazards and Health Effects,  
National Center for Environmental Health, CDC



# EH Concerns



**Safe Water Supply**



**Safe Food Supply**

**Community Health**



**Healthy Places**

**Healthy Homes**



**Proper Waste Management**



# U.S. Health Crisis



- Chronic diseases responsible for 7 out of 10 deaths in U.S.
- Chronic diseases strike > 1/3 of population
- Health care costs for chronic diseases > 75% of U.S. \$1 trillion health care budget



# Decision-making Foundation: Public Health Surveillance Data



*Without adequate surveillance, local, state, and federal officials cannot know the true scope of existing health problems and may not recognize new diseases until many people have been affected.*

*Bernice Steinhard  
General Accounting Office*



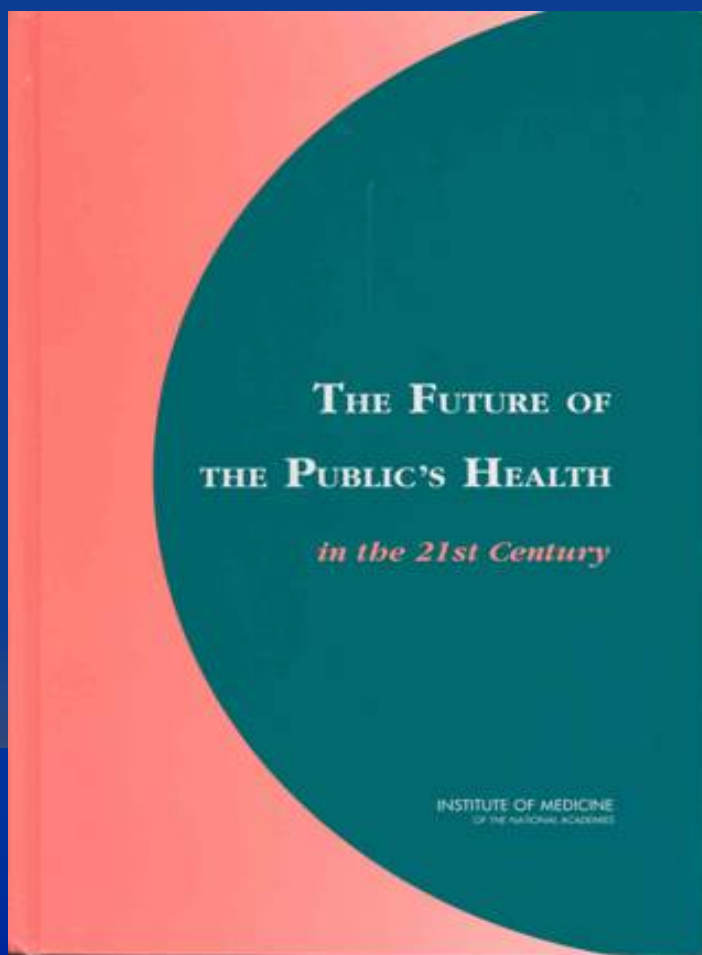
# Uses of Surveillance Data



- Quantify the magnitude of a problem
- Detect unusual trends, occurrences, relationships
- Identify populations at risk
- Generate hypotheses
- Provide data to test some hypotheses
- Direct and evaluate control and prevention measures
- Develop information for better clinical care and individual-health action
- Facilitate policy development



# America: Falling Short of its Potential in Health (IOM, 2003)



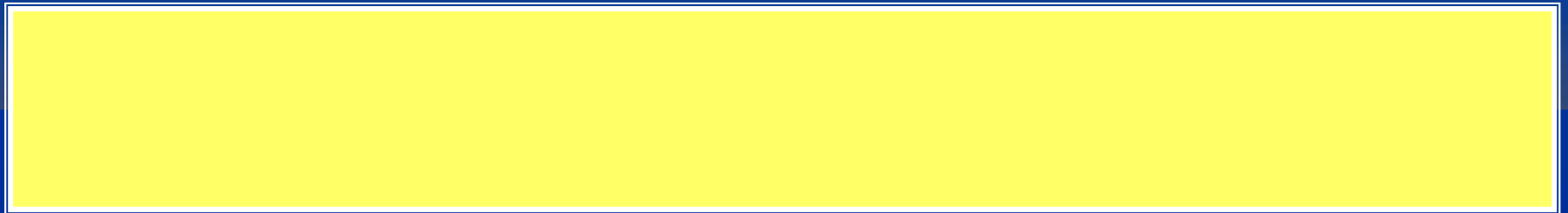
“the nation’s  
surveillance capacity  
is weakened by  
fragmentation and  
gaps.”



# Pew Commission: Environmental Health Review



- Environmental health system was inadequate and fragmented
- Responsibilities scattered among agencies
- Unable to link environmental and health databases



# Typical Environmental Exposures: TODAY



**Infectious Agents**

**Fire Byproducts**

Particulates, PAHs, CO

**Heavy Metals**

Lead, Mercury,  
Palladium, Cadmium

**Industrial Chemicals**

PCBs, Dioxin, Toxaphene,  
VOCs, Phthalates,  
Adipates, PBDEs  
and many others

**Chlorination Byproducts**

Chloroform, Bromoform, etc.

**Vehicular Emissions**

CO, Ozone,  
Particulates, Benzene, etc.

**Pesticides**

DDT, Mirex, 2,4-D,  
Atrazine, Malathion, etc.





# How do environmental hazards relate to health effects in America?



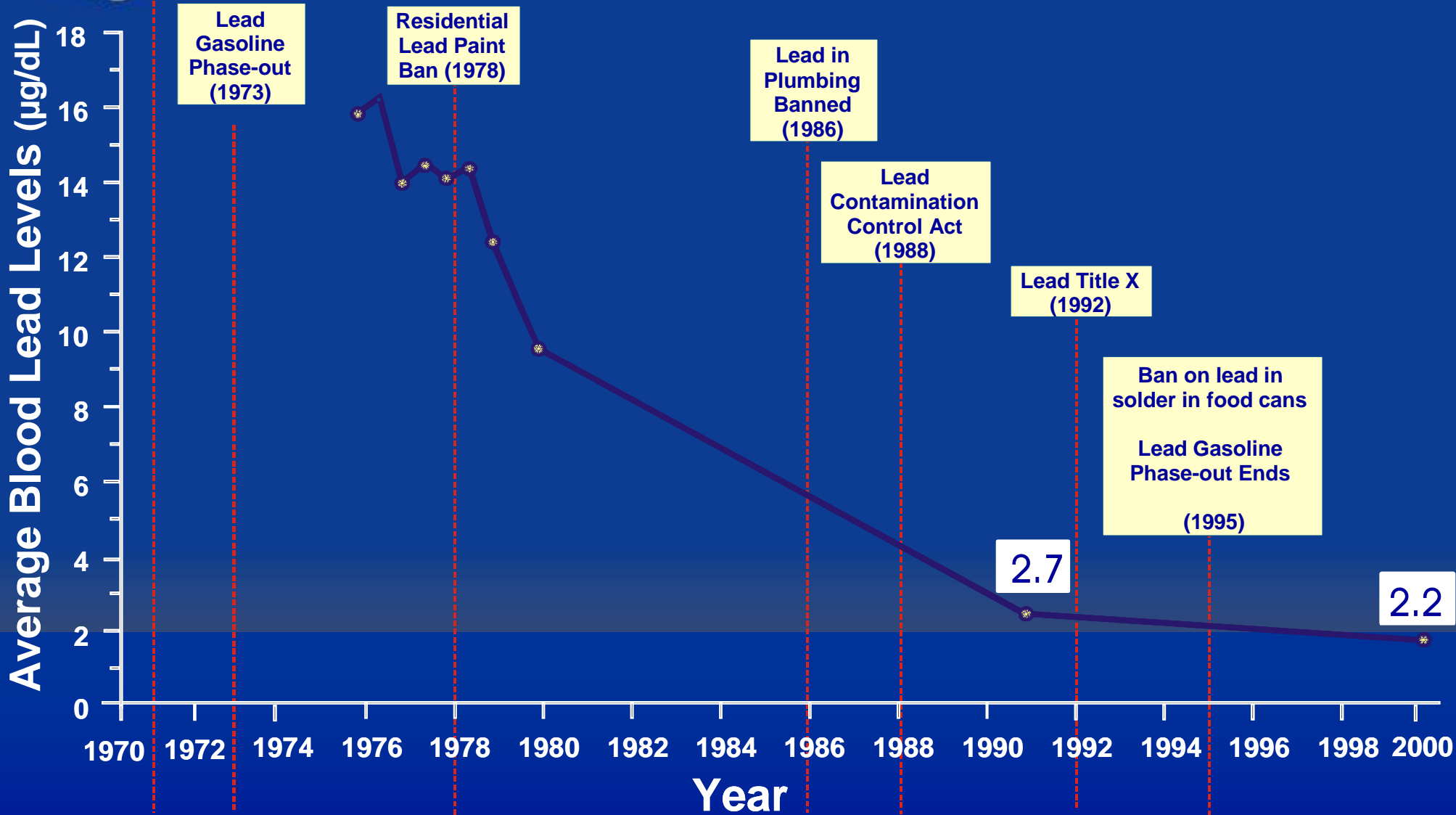
**Answer = We don't know**

- Lack of data
- Lack of tools
- Lack of capacity
- Lack of standards

**Lack of ability to track and quantify disease burden and prevalence of hazard and exposure**

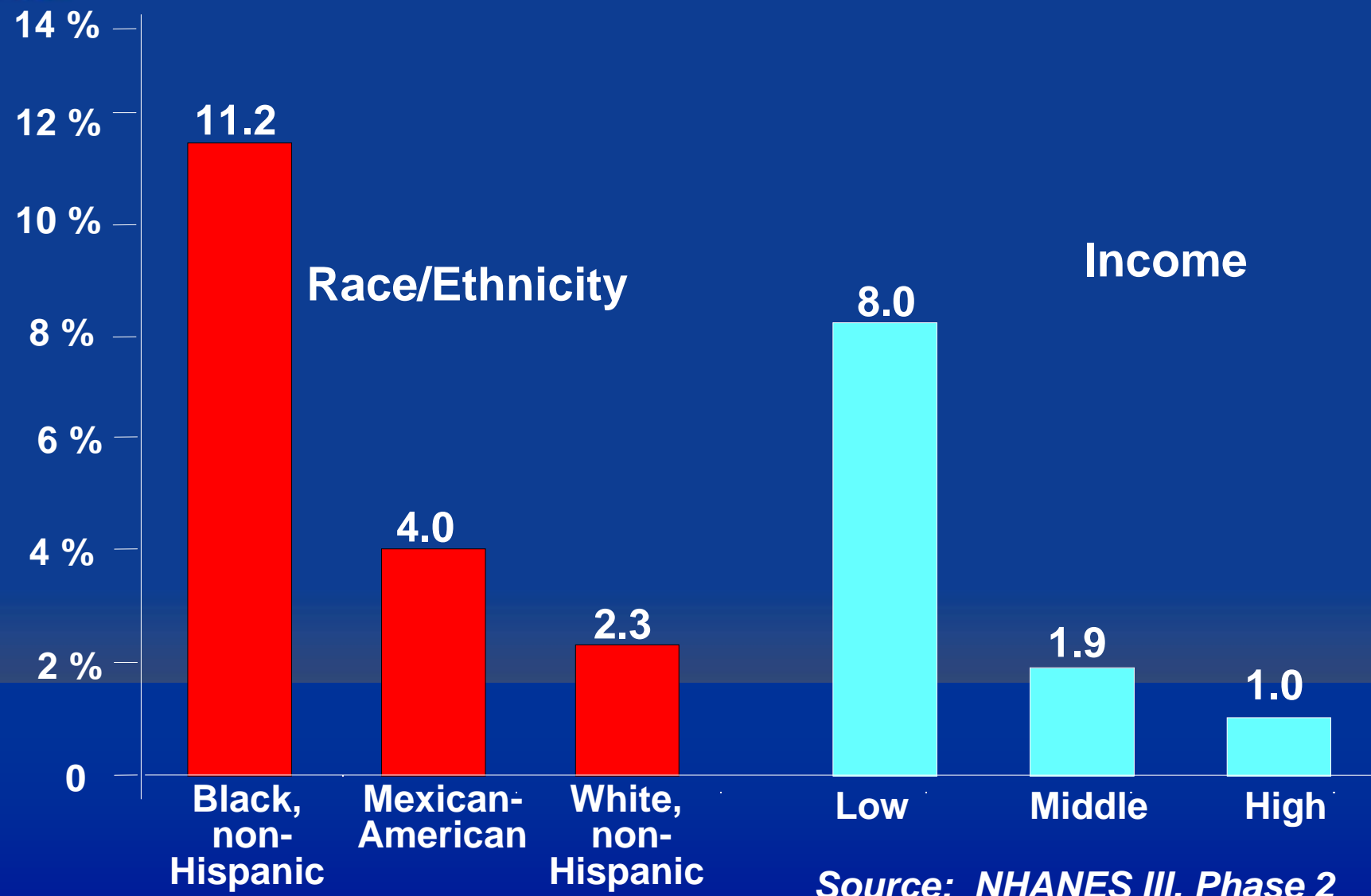


# Impact of Lead Poisoning Prevention Policy on Reducing Children's Blood Lead Levels





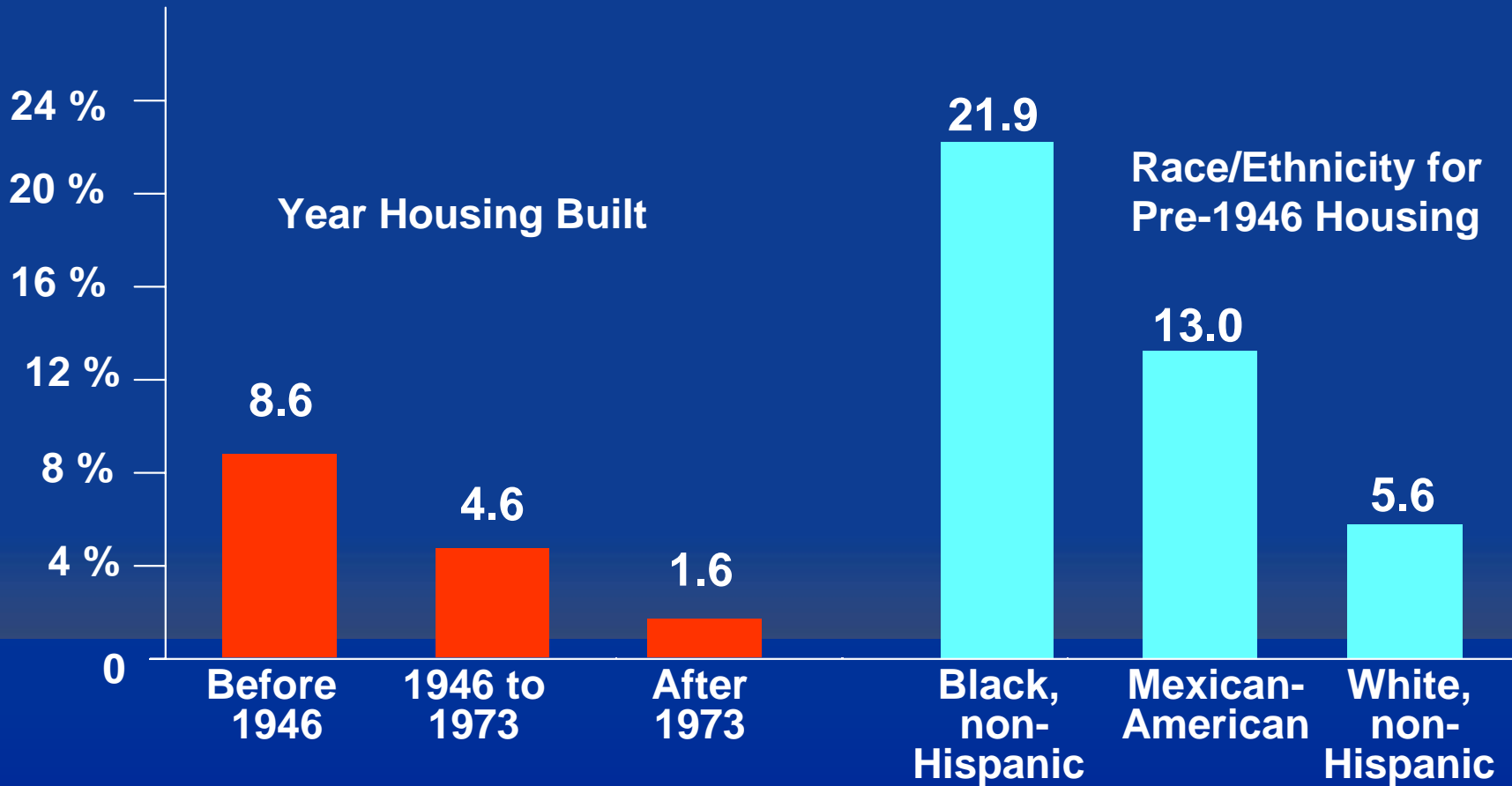
# BLLs $\geq 10 \mu\text{g/dL}$ Among Children Ages 1-5 Years by Income and Race-Ethnicity, United States, 1991 - 1994



Source: NHANES III, Phase 2



# BLLs $\geq 10$ $\mu\text{g/dL}$ Among Children Ages 1-5 Years by Housing Age and Race/Ethnicity: United States, 1991-1994



Source: NHANES III, Phase 2





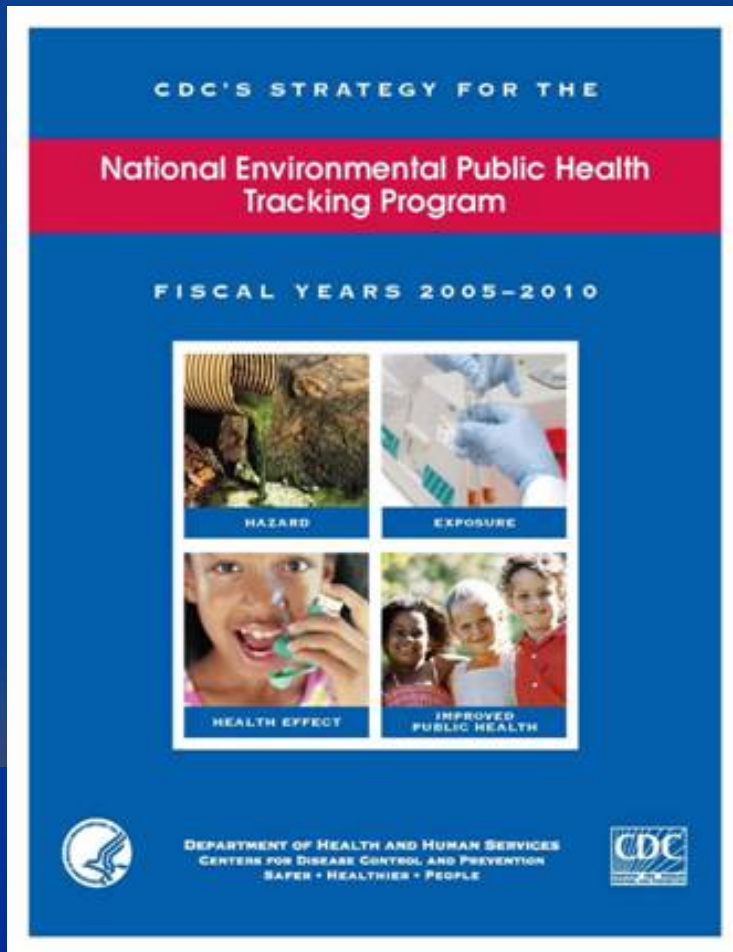
# Tracking = Surveillance



- Environmental public health tracking is the ongoing, systematic collection, integration, analysis, interpretation of data about the following factors:
  - ◆ environmental hazards;
  - ◆ human exposure to environmental hazards;
  - ◆ health effects potentially related to exposure to environmental hazards.
- Data must be disseminated to plan, implement, and evaluate environmental public health action.

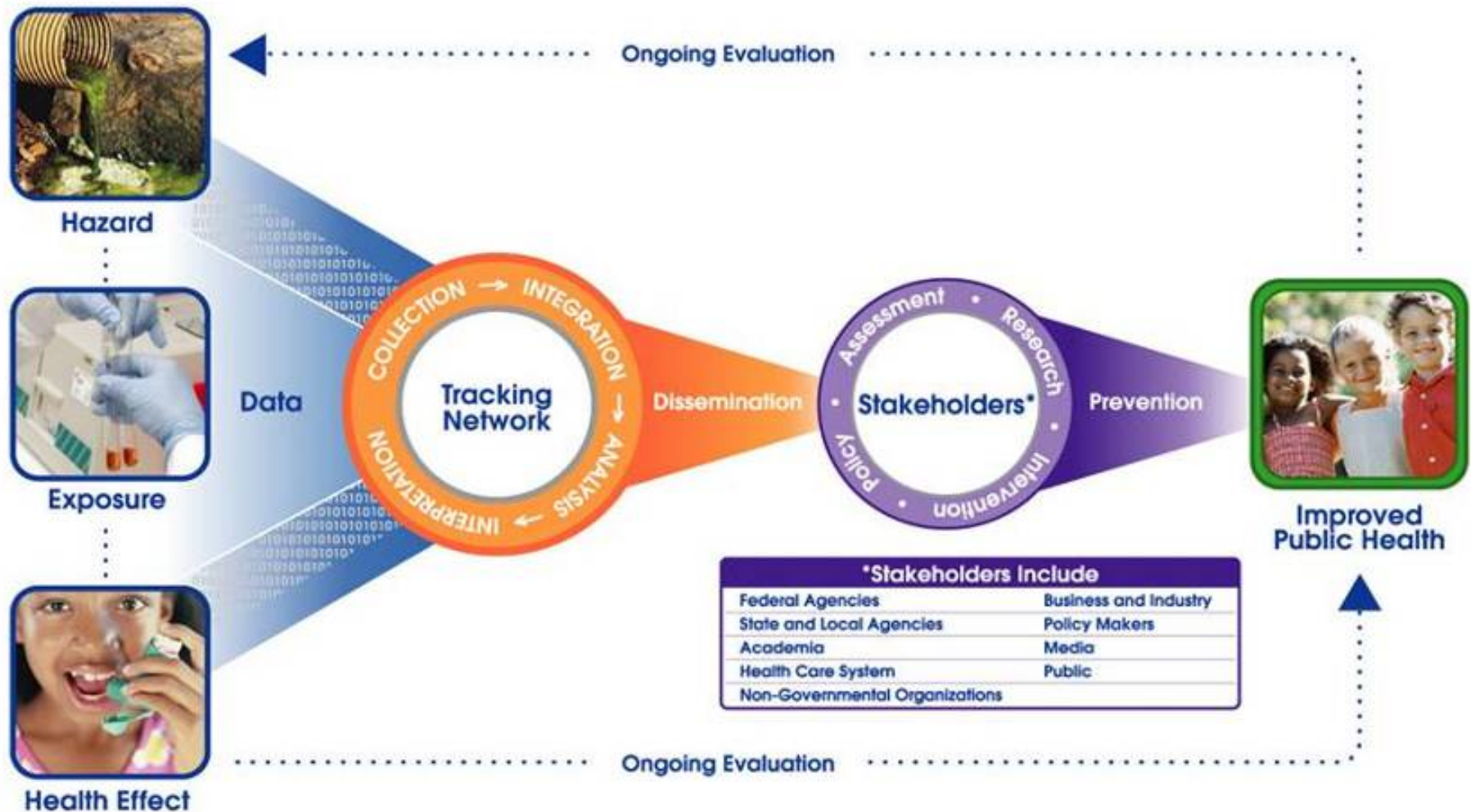


# Our Mission



*To provide information from a nationwide network of integrated health and environmental data that drives actions to improve the health of communities*

# ENVIRONMENTAL PUBLIC HEALTH TRACKING



**\*Stakeholders include**

|                                |                       |
|--------------------------------|-----------------------|
| Federal Agencies               | Business and Industry |
| State and Local Agencies       | Policy Makers         |
| Academia                       | Media                 |
| Health Care System             | Public                |
| Non-Governmental Organizations |                       |



DEPARTMENT OF HEALTH AND HUMAN SERVICES  
CENTERS FOR DISEASE CONTROL AND PREVENTION  
SAFER • HEALTHIER • PEOPLE





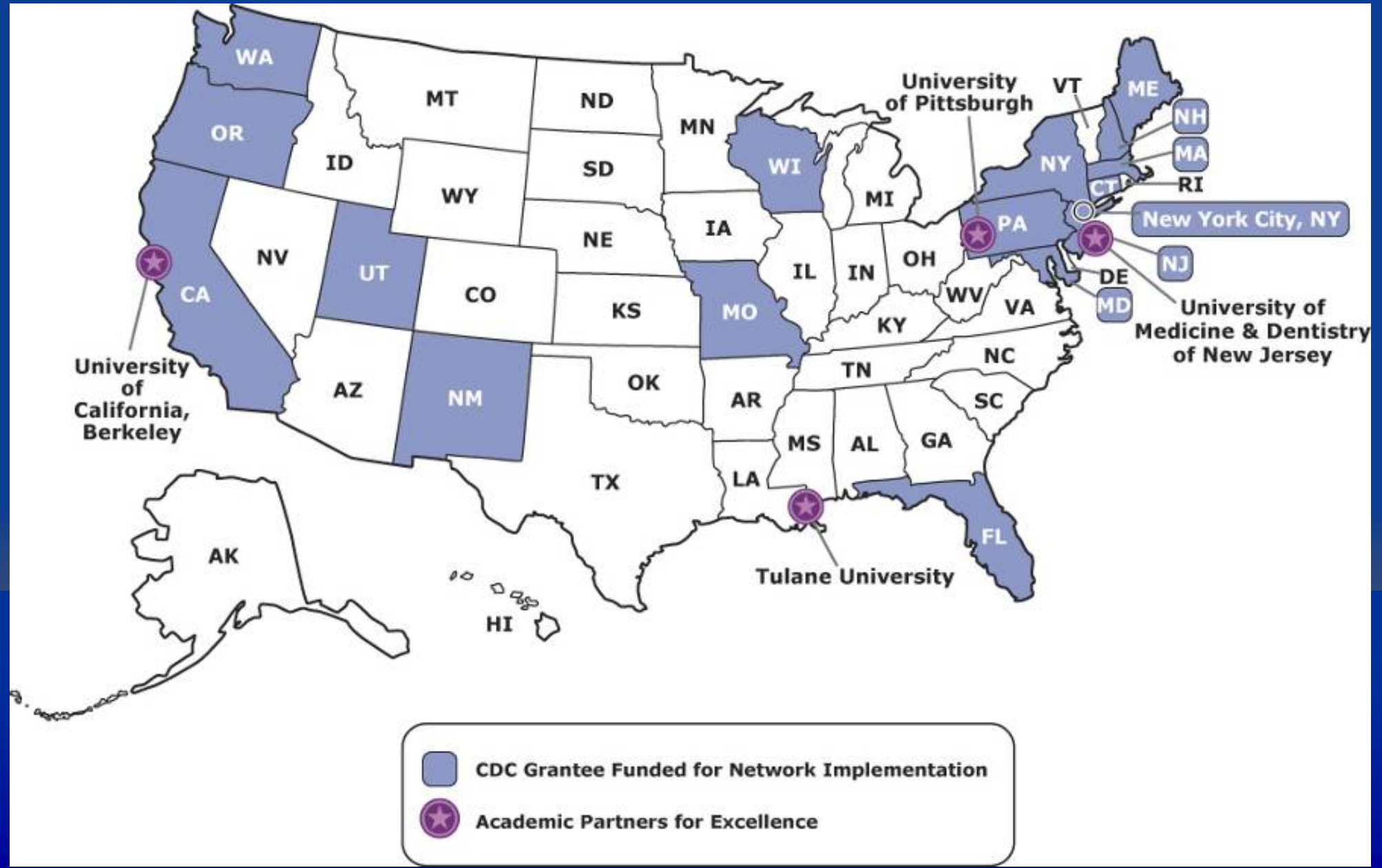
# STRATEGIC PARTNERSHIPS FOR DEVELOPING & IMPLEMENTING ENVIRONMENTAL PUBLIC HEALTH TRACKING







# CDC's Tracking Grantees FY 2006





# Tracking Future Directions



- Network Implementation
- “State of Tracking” Report
- “State of Environmental Health” Report







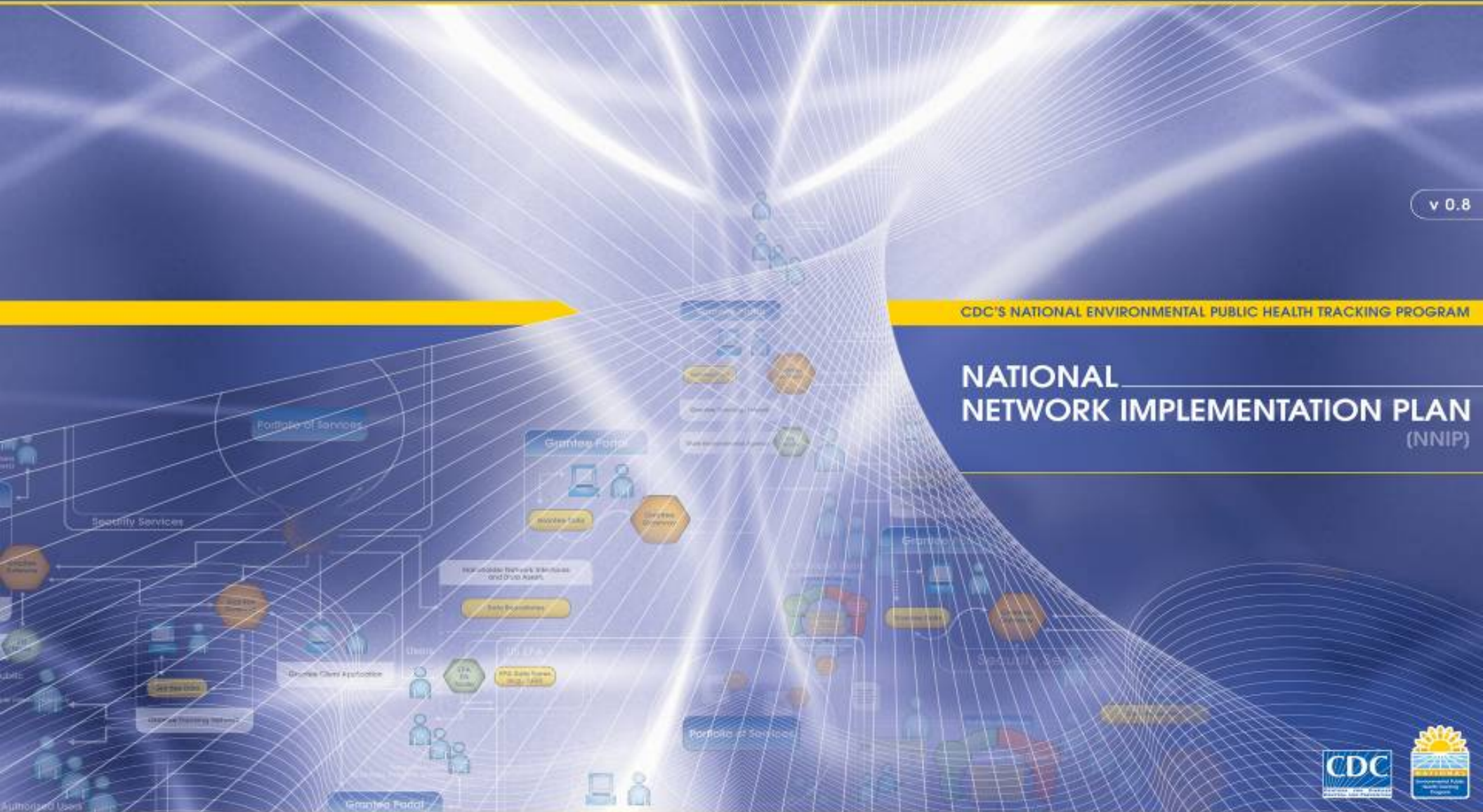
# National Network Implementation Plan (NNIP)



v 0.8

CDC'S NATIONAL ENVIRONMENTAL PUBLIC HEALTH TRACKING PROGRAM

## NATIONAL NETWORK IMPLEMENTATION PLAN (NNIP)





# State of Tracking



- Telling our story
  - ◆ Why Tracking?
  - ◆ What has been done?
  - ◆ What have we learned?
  - ◆ Where are we going?



- Anticipated Release December 2006





# State of EH



- Biennial report on the Nation's environmental public health status
  - ◆ Accessible and readable
  - ◆ Useful for forecasting
  - ◆ Stimulate further data collection
  - ◆ Stimulate research
  - ◆ Impact policy
  - ◆ Improve public health
  
- First release anticipated December 2008





- Health & Safety Topics
- Publications & Products
- Data & Statistics
- Conferences & Events

### Environmental Health

#### Environmental Hazards & Health Effects Program

#### Tracking Program

- > [Tracking Home](#)
- > [About the Program](#)
- > [Communications Library](#)
- > [Communicate with the Program](#)
- > [Conferences & Meetings](#)
- > [Data Resources](#)
- > [EPHT Network](#)
- > [Partnerships](#)
- > [Policy & Legislation](#)
- > [Program Grants & Contacts](#)
- > [Publications](#)
- > [Related Programs](#)
- > [Special Projects](#)

### ENVIRONMENTAL HAZARDS & HEALTH EFFECTS

## National Environmental Public Health Tracking Program

### IN THE SPOTLIGHT



#### CDC's Strategy for the National Environmental Public Health Tracking Program [\(PDF, 2.2 Mb\)](#)

Defines the vision, mission, and five goals that set the direction of the EPHT Program



#### EPHT Partnerships

Find out what organizations and agencies are working with CDC to achieve EPHT Program goals ...[more](#)



#### HELIX: Atlanta

Learn about development and testing of EPHT-applicable methods in 5 metropolitan Atlanta counties ...[more](#)

#### About the Program

Background, Vision, At a Glance, Program in Brief, Conceptual Diagram ...[more](#)

[Communications Library](#)

[Email this page](#)

[Print this page](#)

#### Quick Links

> [National Center for Environmental Health \(NCEH\)](#)

#### Key Resources

[Mini-Monograph in Environmental Health Perspectives](#)

#### Programs & Campaigns

[HELIX: Atlanta](#)

[CDC-Funded Tracking Projects](#)

[National Biomonitoring Program](#)

[Environmental Public Health Indicators Project](#)

For more information: [www.cdc.gov/nceh/tracking](http://www.cdc.gov/nceh/tracking)

Contact us: [EPHT@cdc.gov](mailto:EPHT@cdc.gov)