




**Module 10**  
**CA Optimization Tools and Challenge Exercise**



**RCRA Corrective Action Training  
Program: Getting to YES!**  
*Strategies for Meeting the 2020 Vision*



This training and training documents do not create any legally binding requirements on the U.S. Environmental Protection Agency (EPA), states, or the regulated community, and do not create any right or benefit, substantive or procedural. The training and documentation are not a complete representation of the Resource Conservation and Recovery Act or of EPA's regulations and views.



February 2009      Module 10 – CA Optimization Tools and Challenge Exercise      1

## Notes:

### Purpose of Slide

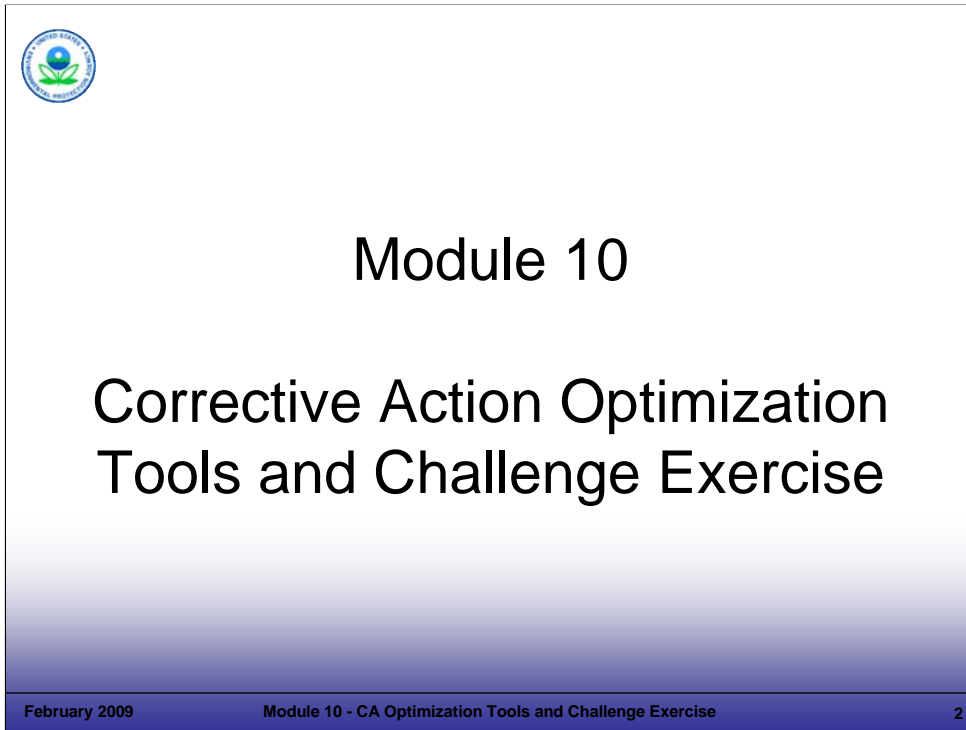
- Holder slide for Module 10, Corrective Action (CA) Optimization Tools and Challenge Exercise.

### Key Points

- This is a holder slide. No specific key points.

### References

- None.



**Notes:**

Purpose of Slide


- Holder slide for Module 10, CA Optimization Tools and Challenge Exercise.

Key Points

- This is a holder slide. No specific key points.



References

- None.



## Module Overview

- ❖ Review concepts covered in Modules 1 through 9
- ❖ Provide a summary reference of approaches and tools
- ❖ Review and discuss these concepts – share ideas and examples of group



February 2009      Module 10 - CA Optimization Tools and Challenge Exercise      3

### Notes:

#### Purpose of Slide

- Provide overview of Module 10, which includes a handout and discussion exercise.

#### Key Points

- As a break from lecture and PowerPoint overload, we will have an interactive, hand out-based discussion.
- This module provides an opportunity to review and share practical approaches and tools for corrective action (CA).
- The instructor will hand out a Menu of CA Optimization Tools developed for the training course from a variety of information sources. This menu highlights some of the practical approaches discussed in this course.
- The goal is to discuss the currently listed approaches and add more approaches as the course is delivered in each Region.

#### References

- None.



## Challenge Exercise

- ❖ Which tools are you:
  - Currently using?
  - Intend to use?
  - Would like to use but can't?
- ❖ What are the potential obstacles or limitations:
  - Legal / regulatory?
  - Policy?
  - Technical or resources?

February 2009

Module 10 - CA Optimization Tools and Challenge Exercise

4

### Notes:

#### Purpose of Slide


- Provide guide to exercise.

#### Key Points

- The instructor will provide direction for this exercise.

#### References

- None.



Optimization Tool	Currently Used	Intend to Use	Would Like to Use, But	Obstacles		
				Legal/Regulatory	Policy	Technical or Resource
<i>Regulatory approach</i>						
Performance-based permit	√	√				
Facility-lead agreement		√				
Self-certification			√		√	
Parcel Transfer		√				

February 2009      Module 10 - CA Optimization Tools and Challenge Exercise      5

**Notes:**

Purpose of Slide

- Overview information to support the exercise.

Key Points

- The instructor will provide direction for this exercise.

References

- None.



## Summary

- ❖ Concepts discussed to date can be applied using a variety of practical approaches and streamlining tools.
- ❖ Tools and resources are available to support implementation of these concepts.
- ❖ To GET TO YES, focus on progress rather than process.

February 2009

Module 10 - CA Optimization Tools and Challenge Exercise

6

### Notes:

#### Purpose of Slide

- Summarize the module.

#### Key Points

- Review the key points discussed or reiterated in this module.

#### References

- None.