

SOCIAL SECURITY ADMINISTRATION

**Commissioner**  
Michael J. Astrue

**Deputy Commissioner**  
Jason J. Fichtner\*

**Chief of Staff**  
James A. Winn

**Deputy Chief of Staff**  
Jo Tittel

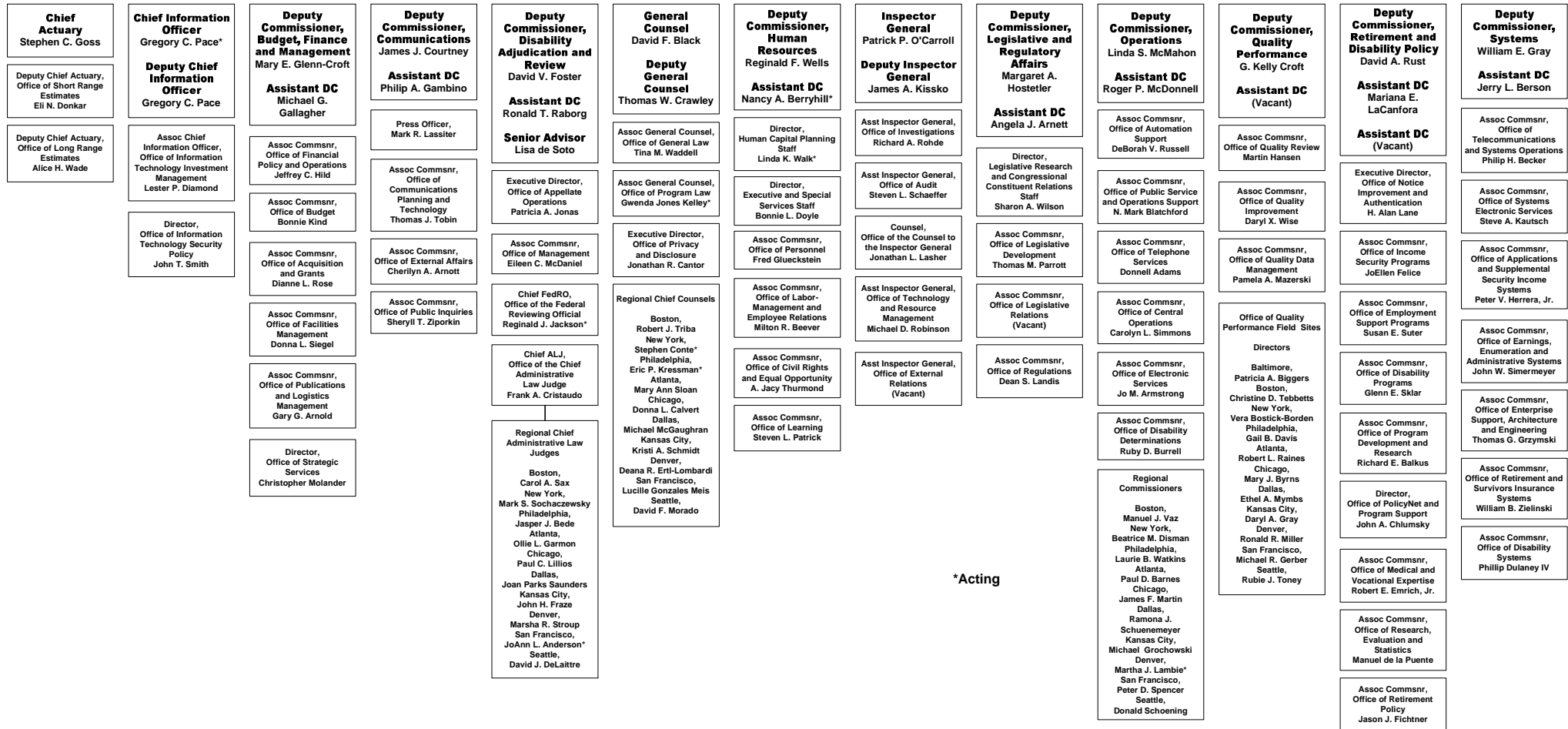
**Senior Advisor to the Deputy Commissioner**  
Linda D. Maxfield

**Special Advisor for Health IT**  
James C. Borland

**Executive Secretary**  
Robin F. Kaplan

**Office of International Programs**  
Diane K. Braunstein\*

May 4, 2009



\*Acting