

State Incentives for Achieving Clean and Renewable Energy Development on Contaminated Lands



The development of clean and renewable energy on formerly used land offers many economic and environmental benefits. Combining clean and renewable energy and contaminated land cleanup incentives can allow investors and communities to create economically viable clean and renewable energy redevelopment projects. This document provides information about incentives in your state that can be leveraged for clean and renewable energy and development of contaminated land.



Incentives for Clean and Renewable Energy

Tax Incentives (abatements, deductions, credits, etc.)

Renewable Energy Property Tax Exemption

<http://kcc.ks.gov/energy/index.htm>

Exempts renewable energy equipment from property taxes. Renewable energy includes wind, solar thermal electric, photovoltaic (PV), biomass, hydropower, geothermal, and landfill gas resources or technologies that are actually and regularly used predominantly to produce and generate electricity. All personal property used to collect, refine, and treat landfill gas or transport landfill gas from a landfill to a transmission pipeline (i.e., not necessarily used for electricity generation) is also exempt from property taxes.

Quick Facts

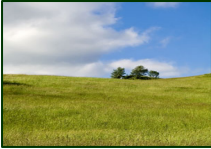
Public Benefit Fund (PBF)	Yes <input type="checkbox"/> No <input checked="" type="checkbox"/>
Renewable Portfolio Standard	Yes <input type="checkbox"/> No <input checked="" type="checkbox"/>
Net Metering	Yes <input type="checkbox"/> No <input checked="" type="checkbox"/>
Interconnection Standards	Yes <input type="checkbox"/> No <input checked="" type="checkbox"/>

Electric Power Industry Generation by Primary Energy Source (EIA, 2006)

Petroleum-Fired	0.1%	Nuclear	20.5%
Natural Gas-Fired	4.0%	Hydroelectric	-
Coal-Fired	73.1%	Other Renewables	2.2%

Points of Contact

Renewable Energy Property Tax Commission
Kansas Corporation Commission
kcc.ks.gov/energy/index.htm
 Jim Ploger, j.ploger@kcc.ks.gov, (785) 271-3349



Incentives for Development of Contaminated Land



Funding (grants, loans, bonds, etc.)

Brownfields Targeted Assessment (BTA) Program

www.kdheks.gov/brownfields/targeted_assess_prog.html

Provides funding and technical assistance to assist local units of government, land clearance authorities, regional councils, redevelopment agencies, tribal organizations, not-for-profit organizations, and other quasi-governmental agencies across the state in performing environmental site assessments.

Brownfields Cleanup Revolving Loan and Grant Fund (BCRLGF)

www.kdheks.gov/remedial/articles/article_brownfield.html

Provides low-interest loans to clean up contaminated properties owned by municipalities or not-for-profit organizations. Cleanups must be conducted through KDHE's Voluntary Cleanup Program for all properties qualifying for BCRLGF funding.

Kansas Agricultural Remediation Fund (KARF)

<http://karb.org/default.htm>

Provides funding to assist in the investigation and remediation of qualifying properties with agriculture-related contaminants. Maximum reimbursement amount for those who have been assessed a fee is \$200,000. For those who have not paid an assessment fee or for pesticide dealers who have paid an assessment, maximum reimbursement amount is \$10,000.

Limitations on Liability

Voluntary Cleanup and Property Remediation Program – No Further Action (NFA)

www.kdheks.gov/remedial/vcp/index.html

Grants an NFA determination, which provides protection from potential future liabilities to developers and buyers who perform successful cleanups of contaminated properties according to established criteria.

Quick Facts

Limitations on Liability	Yes <input checked="" type="checkbox"/> No <input type="checkbox"/>
Number of State-Tracked Contaminated Properties:	93
Includes sites in the Voluntary Cleanup and Property Redevelopment Program	
Number of EPA CERCLIS Sites:	274
Sites identified for potential investigation under the federal Superfund Program	
Number of EPA Brownfields Properties:	48
Properties being funded or addressed under the EPA Brownfields Program	

There may be some overlap among the categories listed and sites listed may not represent all potentially contaminated sites in Kansas.

Points of Contact

**Kansas Department of Health and Environment, www.kdheks.gov/
BTA & BCRLGF**

Doug Doubek, ddoubek@kdhe.state.ks.us, (785) 291-3246

NFA

Jeff Poyer, jpoyer@kdhe.state.ks.us, (785) 291-3244

Kansas Agricultural Remediation Board

karb.org/default.htm

KARF, Mary Jane Stankiewicz, mjs@karb.org, (785) 440-0356