

Contact us

Comments or questions on the proposed project can be directed to:

John Holt, Environmental Manager

Western Area Power Administration
P.O. Box 6457
Phoenix, AZ 85005-6457
Phone: 602-605-2592
Fax: 602-605-2630
E-mail: holt@wapa.gov

To request a copy of the Draft EIS or learn more about the proposed project, call, write or e-mail:

Mark Wieringa, NEPA Document Manager

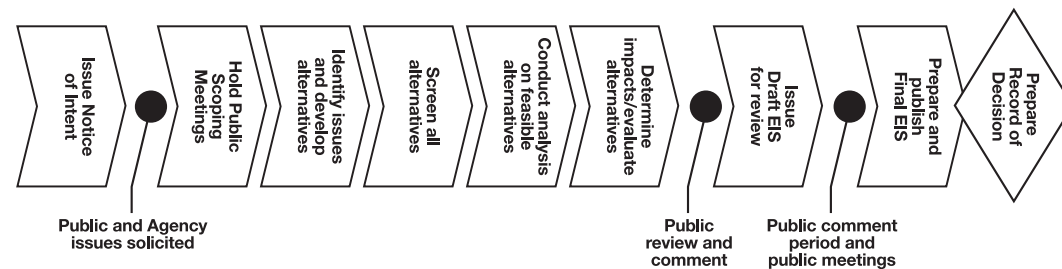
Western Area Power Administration
P.O. Box 281213
Lakewood, CO 80228-8213
Phone: 720-962-7448
Fax: 720-962-7263
E-mail: wieringa@wapa.gov

For project information in Spanish, contact:

Ms. Enoe Marcum, Environmental Specialist

Desert Southwest
Customer Service Region
Western Area Power Administration
P.O. Box 6457
Phoenix, AZ 85005
Phone: 602-352-2422
Fax: 602-352-2630
E-mail: marcum@wapa.gov

Steps in an Environmental Impact Statement (EIS)



U.S. Department of Energy
Western Area Power Administration
P.O. Box 281213
Lakewood, CO 80228-8213

Wellton-Mohawk **PROJECT UPDATE**

GENERATING FACILITY Summer 2005

Draft Environmental impact Statement available

The Wellton-Mohawk Generating Facility Draft Environmental Impact Statement is now available for public review and comment. Copies of the Draft EIS are located at:

Western Area Power Administration

615 South 43rd Avenue
Phoenix, Arizona

Bureau of Land Management

2555 East Gila Ridge Road
Yuma, Arizona

Bureau of Reclamation

7301 Calle Agua Salada
Yuma, Arizona

DOE Reading Room

Forrestal Building
Washington, DC

Written comments on the Draft EIS must be postmarked no later than Sept. 6, 2005 to be addressed in the Final EIS. E-mail and faxed comments will be accepted until 11:59 p.m., Sept. 6, 2005. Oral and/or written comments will also be accepted at the Draft EIS hearings announced below.

A CD or paper copy of the Draft EIS or the Executive Summary may be obtained by contacting one of the people listed on the back of this newsletter. If you previously requested a copy of the Draft EIS in the format of your choice, a copy has been sent to you.

We're saving you a seat

Western, BLM and Reclamation invite you to attend our public hearings on the Draft EIS. We're hosting public hearings Aug. 17 in Wellton and Aug. 18 in Yuma to give you the opportunity to offer formal comment for the record on the Draft EIS. Prior to the start of each hearing, you are invited to attend an initial informal session for an overview of the proposed project and the Draft EIS conclusions. We'll also answer your questions before the start of each Draft EIS hearing.

Comments received at the hearings, or by mail, e-mail or fax, will become part of the record on the Wellton-Mohawk Generating Facility EIS and will be considered by the agencies in their decision processes. All substantive comments will be addressed in the WMGF Final EIS. All comments on the Draft EIS must be received by 11:59 p.m. on Sept. 6, 2005, to be addressed in the Final EIS.

Meeting: Draft EIS Public Hearing

Date: Aug. 17, 2005

Place: Antelope Union High School
9168 South Avenue 36 East
Wellton, Arizona

Time: 5 – 9 p.m.

Format: We are hosting an open house between 5 and 6:30 p.m. We'll have stations with displays on the proposed project, staffed by experts who can answer your questions. We'll also have comment forms available to gather your written input on the project. At 6:30 p.m. we'll start a formal hearing, where you can provide oral comments for the record. A court reporter will transcribe all comments and the transcripts will be made available to the public.

Meeting: Draft EIS Public Hearing

Date: Aug. 18, 2005

Place: Yuma Civic and Convention Center
1440 West Desert Hills Drive
Yuma, Arizona

Time: 5 – 9 p.m.

Format: We will use the same format as the Wellton hearing.

Refreshments will be served at both hearings

Draft EIS concludes no significant impacts to most resources

The Wellton-Mohawk Generating Facility Draft EIS studied impacts to many different resources including air, water, vegetation, wildlife, special-status species and cultural resources. These resources and more are detailed in the Executive Summary and in Chapter 3 of the Draft EIS.

Because the proposed project makes extensive use of previously disturbed areas and existing rights of way, no significant impacts are projected for most of the resources considered. Natural gas is clean burning compared with other fuels, and emission controls would reduce emissions to insignificant levels. However, the intrusion of the project on cultural resources, particularly traditional cultural properties, is considered by Native American tribes to be a significant impact, even if direct physical impact can be avoided. Western will continue to work with the tribes to identify opportunities to

minimize the impact of the project on these important locations. The impacts described in the Draft EIS are preliminary, and may change based on comments you provide during the Draft EIS comment period.

Project background

Dome Valley Energy Partners LLC, which includes Wellton-Mohawk Irrigation and Drainage District and Yuma County Water Users' Association, among others, proposes to construct the Wellton-Mohawk Generating Facility in Yuma County, Ariz. The proposed project is a natural gas-fired, combined cycle electricity generation facility with associated solar collection field, facility natural gas pipeline and power transmission lines. Phase I would have a rated capacity of 260 megawatts, with peaking capacity of 310 MW using duct burners. The second phase would add another turbine/generator, doubling the capacity to 520 MW with peaking capacity of 620 MW.

Dome Valley has completed a state siting process with the Arizona Corporation Commission. Western is involved because the proposed project would interconnect with Western's transmission system. BLM and Reclamation are cooperating agencies in the EIS process because the proposed project would require transfer of 96 acres of land from Federal ownership, and the natural gas pipeline and transmission line components would require new or amended right-of-way grants.

Records of Decision and Mitigation Action Plan

Western will prepare and approve a Mitigation Action Plan after the release of the Final EIS. The MAP will be issued with the Record of Decision on whether or not to grant the interconnection. The MAP will describe how the mitigation committed to in Western's ROD will be implemented. The MAP will also contain the schedule for completing the mitigation.

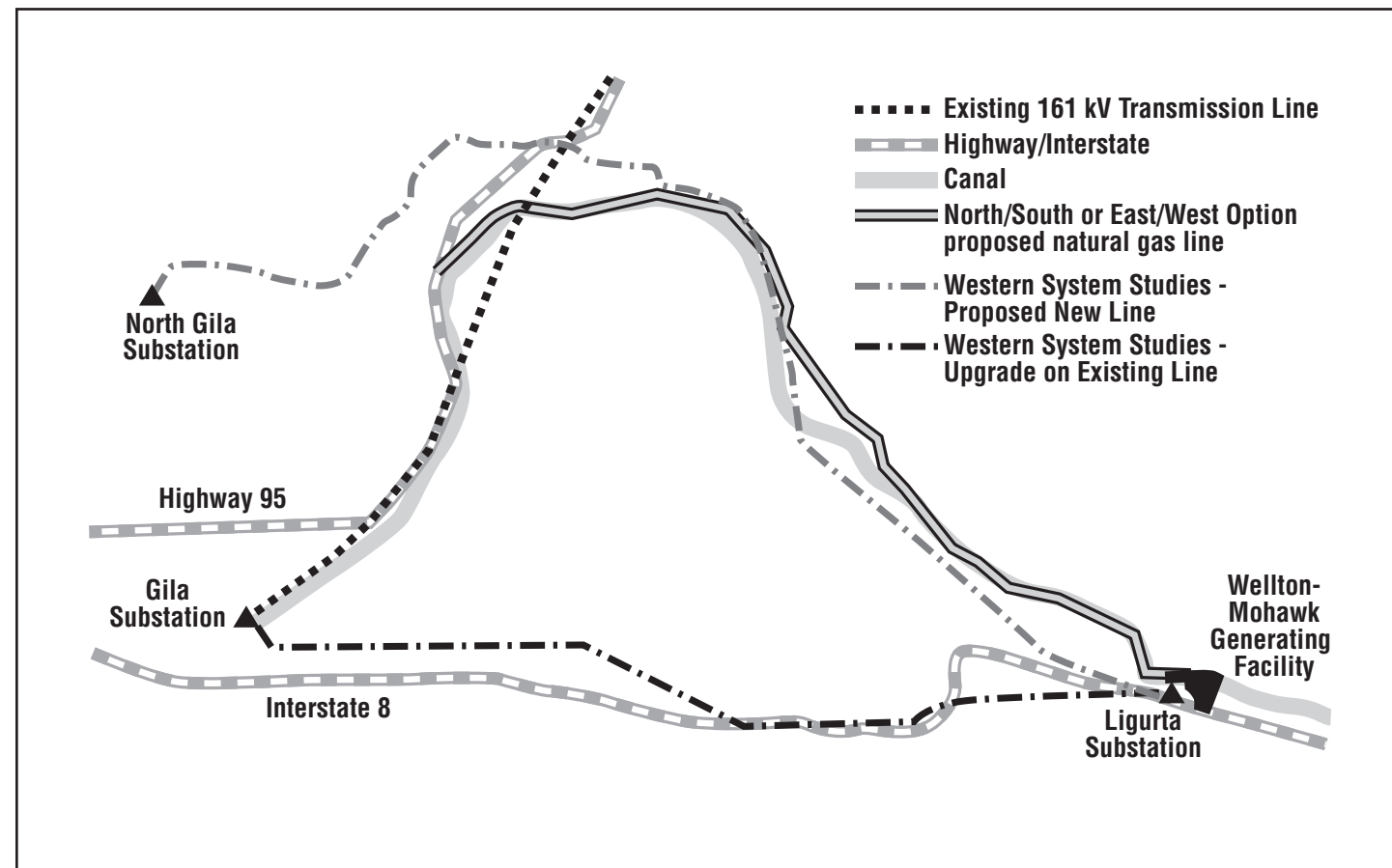
BLM and Reclamation do not have a requirement for a MAP, but do typically prepare a mitigation monitoring plan as part of their ROD packages.

Specific issues studied

The Draft EIS analyzed the following major issues:

- Short-term and long-term effects on air quality
- Direct and indirect effects on wildlife resources and habitats, including special-status species
- Direct and indirect effects on the local community from construction activity, future land use changes, landscape changes, noise and economics
- Direct and indirect effects on water quality and of water use by the proposed project
- Direct and indirect effects on cultural resources and traditional cultural values of Native Americans
- Effects on existing land uses of all proposed project components
- Hazardous waste and waste management issues and human safety

Each issue was analyzed in Chapter 3 of the Draft EIS. Expected impacts and mitigations are disclosed in Chapter 4. A condensed summary of impacts is found in the Executive Summary and in Chapter 2 of the Draft EIS.



Project Schedule

	Jul	Aug	Sep	Oct	Nov
Notice of Availability	22				
EIS public review	[Bar spanning Jul, Aug, Sep]				
EIS public hearings		◆			
Final EIS distribution				◆	
Records of Decision					◆

Note: There will be three Records of Decision — one from Western, one from BOR and one from BLM.