



Energy Center Substation to Lamar Substation

Category Ranks	Alternative - Segments		
	40 - D1, D3	41 - D1, D4	42 - D2
Engineering	1	1	1
Geology and Soils	1	3	1
Water Resources	3	2	1
Vegetation	1	1	1
Wildlife	2	1	3
Land Use	1	1	1
Cultural Resources	1	1	1
Category Rank Total	10	10	9
Alternative Rank	2	2	1

 Proposed Route
 Alternative Route
 Other Route

Proposed, alternative, and other routes are subject to change.

Description & Results

The Energy Center Substation to Lamar Substation transmission line would be approximately 37 miles in length. The transmission line would begin at the new Energy Center Substation near Hartman, Colorado, cross U.S. Highway 385, and end at the existing Lamar Substation near Lamar, Colorado.

To provide increased reliability, two 230-kV lines would be built from Energy Center Substation to Lamar Substation. For this reason, there are two proposed routes.

Alternative 42 was identified as one proposed route. It would be more direct, have better access than the other alternatives, and need fewer transmission structures. It also would have fewer stream crossings, cross less prime and irrigated farmland, and affect fewer landowners.

Alternative 40 was identified as the second proposed route because it would affect fewer homes than alternative 41.

Siting Considerations

The proposed and alternative routes respond to scoping comments and additional ground and aerial surveillance.

Route-specific comments from scoping included:

- Coordinate with irrigation district for canal crossings



Base Map

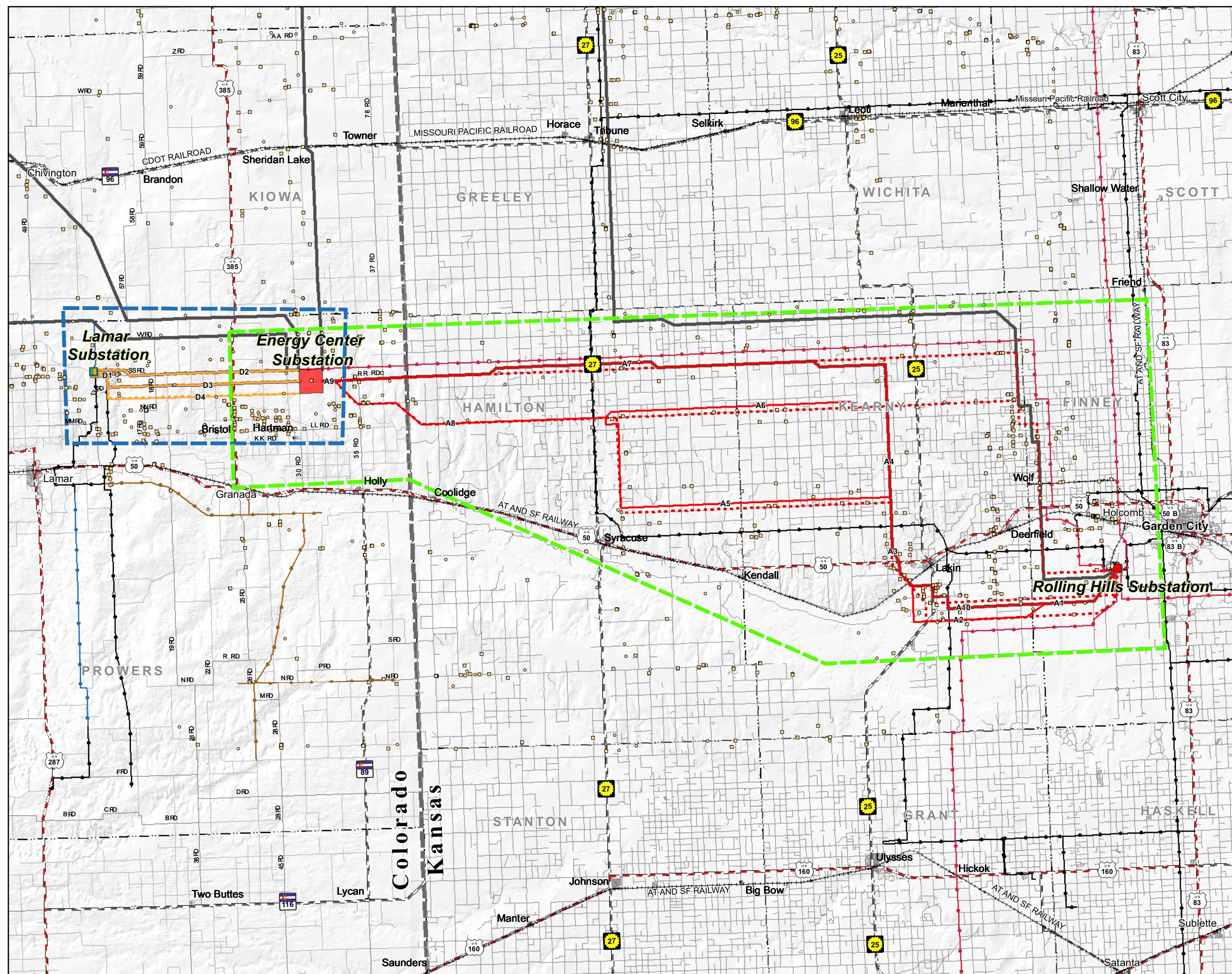
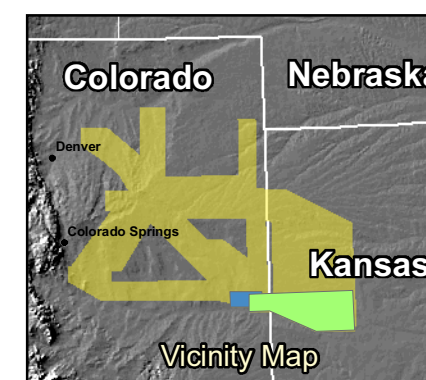
Rolling Hills to Energy Center and Energy Center to Lamar

Legend

- Substations**
- Existing Substation
 - Proposed Substation Siting Area
- Analysis Area**
- Rolling Hills to Energy Center
 - Energy Center to Lamar
- Transportation**
- Interstate Highway
 - State Highway
 - U.S. Highway
 - Minor Road
 - Major Road
 - Railroad
- Existing Transmission Lines**
- 115-kV Transmission Line
 - 230-kV Transmission Line
 - 345-kV Transmission Line
 - 69-kV Transmission Line
- Routes**
- Rolling Hills to Energy Center**
- Proposed (500-kV)
 - Alternative (500-kV)
 - Previous (500-kV)
- Energy Center to Lamar**
- Proposed (230-kV)
 - Alternative (230-kV)
 - Previous (230-kV)
- Structures** (Digitized from aerial photography)
- Residence
 - Other Structure

Source Data:
 ESRI (Cities, BTS (Highways), National Atlas (States, Counties), CDOT (CO Rail, Roads, Counties, City Boundaries), Census (KS Rail, Roads), KS Geological Survey (KS Counties), Western and Xcel (Existing Transmission))

1:250,000 When printed at 22 x 34 Inches



Last Updated: 01/15/07

MXD Path: P:\2006\06180035_01\GIS\Layouts\Lamar_Rolling_Hills\Second_Public_Meeting\RollHills_EC_Base_Matrix

PDF Path: P:\2006\06180035_01\GIS\Layouts\Lamar_Rolling_Hills\Second_Public_Meeting\RollHills_EC_Base_Matrix