



Energy Center Substation to Burlington Substation

Category Ranks	Alternative - Segments		
	37 - C1, C2, C6, C7	38 - C1, C3, C4, C6, C7	39 - C1, C3, C5, C7
Engineering	1	2	3
Geology and Soils	1	3	1
Water Resources	1	2	3
Vegetation	1	1	1
Wildlife	3	2	1
Land Use	2	1	3
Cultural Resources	1	1	1
Category Rank Total	10	12	13
Alternative Rank	1	2	3

Proposed, alternative, and other routes are subject to change.

Description & Results

The Energy Center Substation to Burlington Substation transmission line would be approximately 85 miles in length. The transmission line would begin at the new Energy Center Substation near Hartman, Colorado and head north, cross U.S. Highway 40 near the town of Arapahoe, Colorado, and end at the existing substation near Burlington, Colorado.

Route refinement adjusted several segments including segment C4, which was rerouted to avoid homes. Segment C5 was moved to avoid the Plainview School. The routes around segment C7 were consolidated to the one best alternative given the area’s land uses.

Alternative 39 was identified as the proposed route because it would affect the fewest number of homes, although it would have greater effects in some natural resource criteria and is less desirable from an engineering perspective.

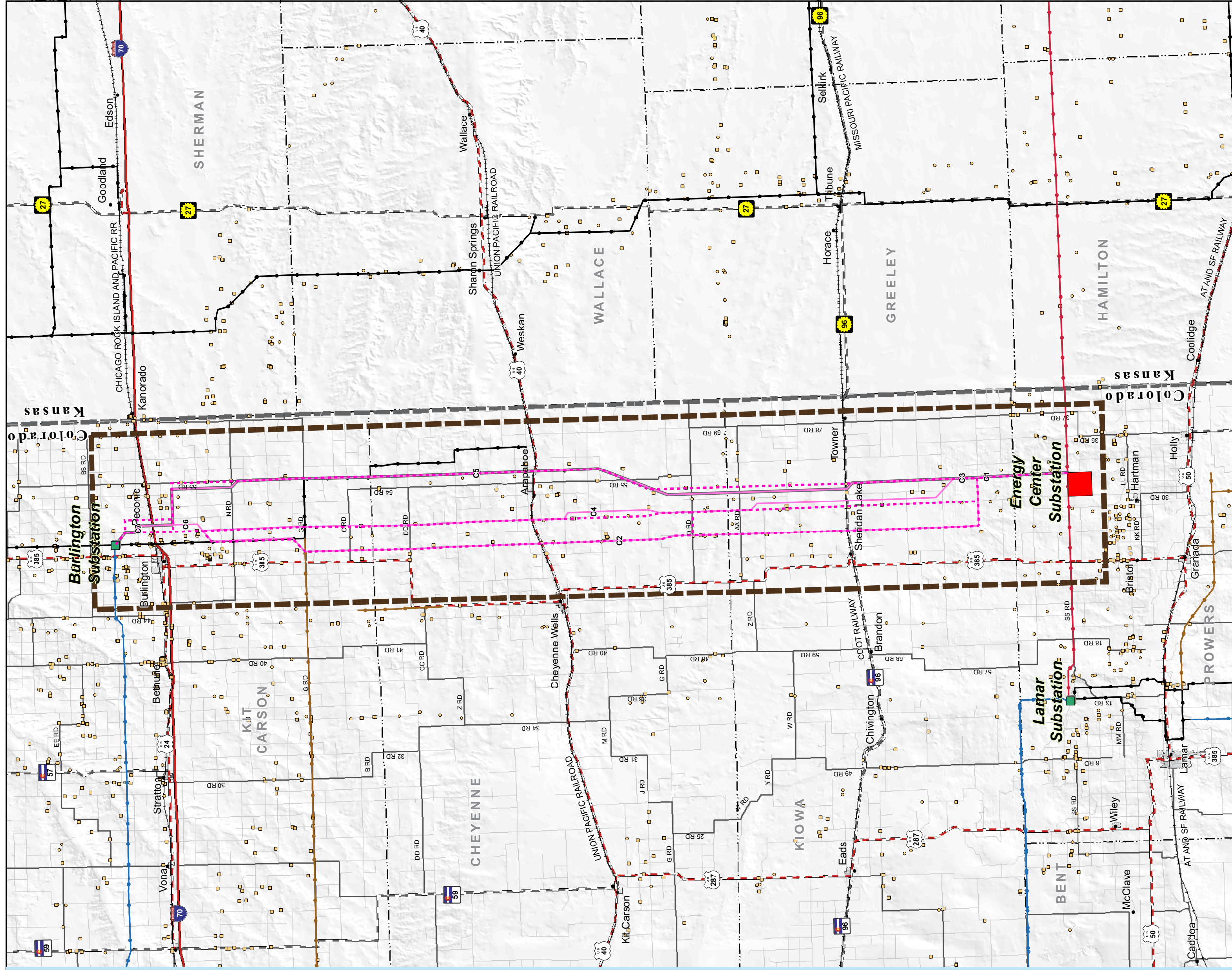
The alternative routes (37 and 38) were chosen because they would have similar effects as the proposed route, except they would affect substantially more homes.

Siting Considerations

The proposed and alternative routes respond to scoping comments and additional ground and aerial surveillance.

Route-specific comments from scoping included:

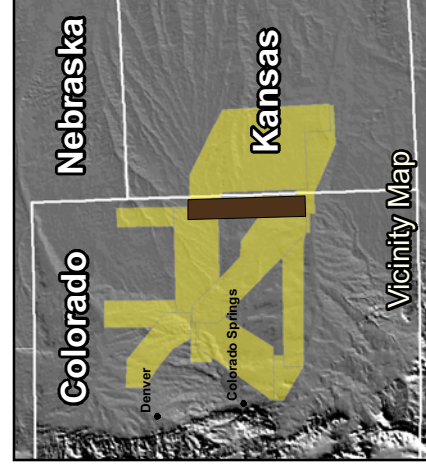
- Avoid the Plainview School
- Avoid hog farms



Base Map

Energy Center to Burlington

Legend	Transportation	Existing Transmission Lines	Routes
Substations	Interstate Highway State Highway U.S. Highway Minor Road Major Road Railroad	115 kV Transmission Line 230 kV Transmission Line 345 kV Transmission Line 69 kV Transmission Line	Proposed (500-kV) Alternative (500-kV) Previous (500-kV)
Analysis Area	Structures		
Energy Center to Burlington	Residence Other Structure		



1:250,000 When printed at 22 x 34 inches
 0 1.252.5 5 7.5 10 Miles

Source Data:
 ESRI (Cities), NED (Hillshade), BTS (Highways), National Atlas (States),
 CDOT (CO Roads, Rail, City/County Boundaries),
 KS Geol Survey (County Boundaries),
 Xcel, Western (Existing Transmission Lines)

Last Updated:
 01/15/07
 MXD Path: P:\2006\06180035_01\GIS\Lays\BigSandy_Lamar\Second_Public_Meeting\EC_Burlington_Base_Matrix.mxd
 PDF Path: P:\2006\06180035_01\GIS\Maps\Burlington_Lamar\Second_Public_Meeting\EC_Burlington_Base_Matrix.pdf



Eastern Plains Transmission Project

