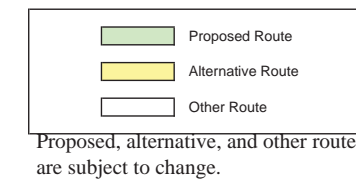


Boone Substation to Midway Substation

Category Ranks	Alternative - Segments		
	59 - 11, 15	60 - 12, 14, 15	61 - 16, 14, 15
Engineering	3	1	1
Geology and Soils	3	1	1
Water Resources	1	3	1
Vegetation	1	1	1
Wildlife	3	1	1
Land Use	1	1	3
Cultural Resources	1	1	1
Category Rank Total	13	9	9
Alternative Rank	3	1	1



Proposed, alternative, and other routes are subject to change.

Description & Results

The Boone Substation to Midway Substation transmission line would be approximately 60 miles in length. The transmission line would begin at the existing Boone Substation near Boone, Colorado and end at the existing Midway Substation near Fountain, Colorado.

Route refinement added segment I4 at the request of a landowner because it would follow Xcel Energy’s proposed Comanche-Midway transmission line. Segment I6 was added at the request of the Colorado State Land Board to avoid a new transmission corridor near stewardship trust lands.

Alternative 60 was identified as the proposed route because it would avoid homes on segment I6 near Boone. This route would also avoid segment I1, even though that segment would follow an existing 69-kV transmission line. Segment I1, however, is a long route with sandy, erodible soils that have low reclamation potential and would cross the Chico Basin stewardship trust land. Alternative 60 in contrast, has more favorable engineering characteristics and substantially fewer homes within 0.5 miles than alternative routes 59 and 61.

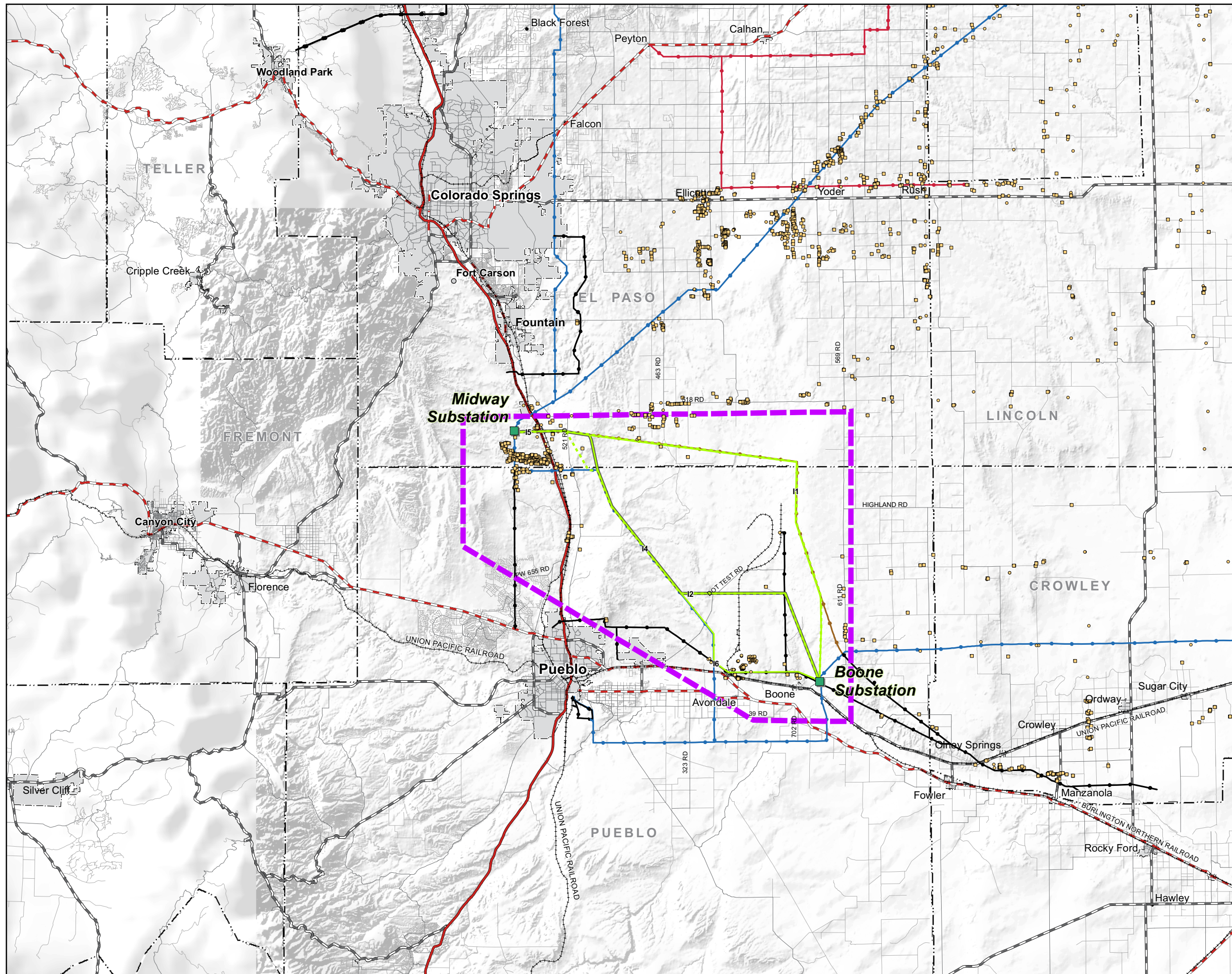
Siting Considerations

The proposed and alternative routes respond to scoping comments and additional ground and aerial surveillance. Several of the routes between substations were re-labeled for the sake of organization and consistency. The segments between Boone Substation and Midway Substation were re-labeled from “F” to “I”.

Route-specific comments from scoping included the following:

- Lines across BLM lands could affect ability to develop mineral resources and could affect other resources of concern
- Avoid areas of sandy soils
- Avoid or minimize affects to stewardship trust lands
- Consider an alternative that runs south and west of the Pueblo Chemical Depot, rather than east and north
- Avoid F1
- Follow Xcel’s proposed Comanche to Midway line at north end of F2





Base Map
Boone to Midway

Legend

Substations

- Existing Substation
- Proposed Substation Siting Area

Analysis Area

- Boone to Midway

Transportation

- Interstate Highway
- State Highway
- U.S. Highway
- Minor Road
- Major Road
- Railroad

Existing Transmission Lines

- 115-kV Transmission Line
- 230-kV Transmission Line
- 345-kV Transmission Line
- 69-kV Transmission Line

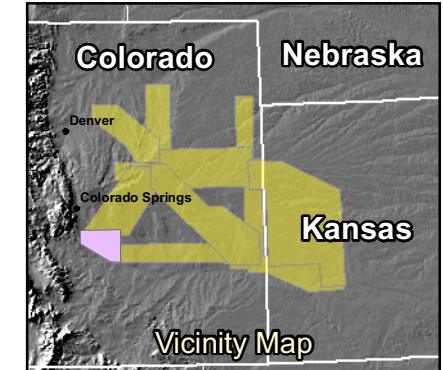
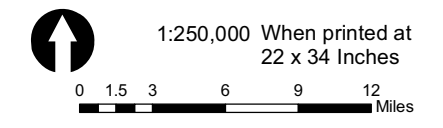
Routes

- Proposed (500-kV)
- Alternative (500-kV)
- Previous (500-kV)

Structures (Digitized from aerial photography)

- Residence
- Other Structure

Source Data:
ESRI (Cities), BTS (Highways, Airports),
National Atlas (States, Counties),
CDOT (CO Rail, Roads, Counties, City Boundaries),
Western and Xcel (Existing Transmission)



Last Revised:
01/22/07

MXD Path: P:\2006\06180035.01\GIS\Layouts\Midway_Boone\Second_Public_Meeting\Midway_Boone_Base_Map

PDF Path: P:\2006\06180035.01\GIS\Maps\Midway_Boone\Second_Public_Meeting\Midway_Boone_Base_Map



Eastern Plains Transmission Project

