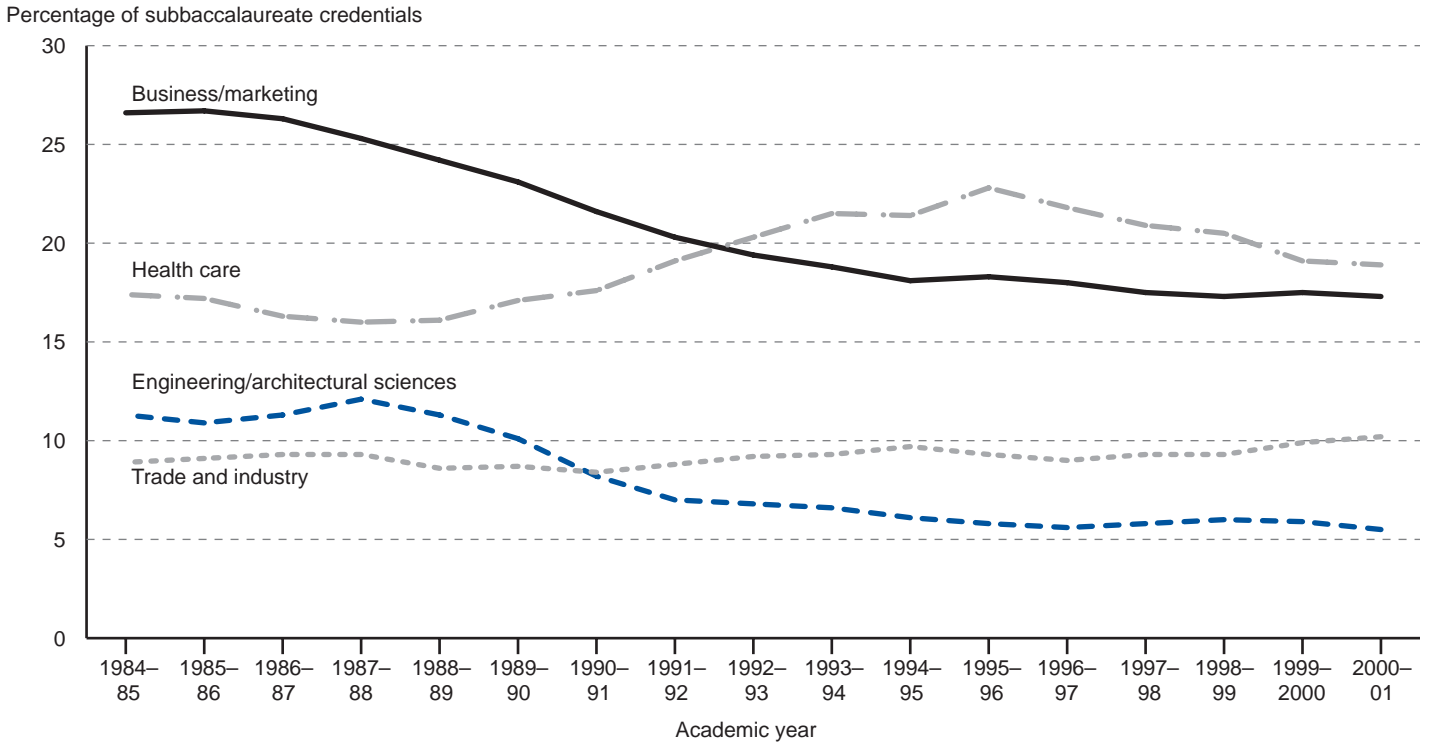


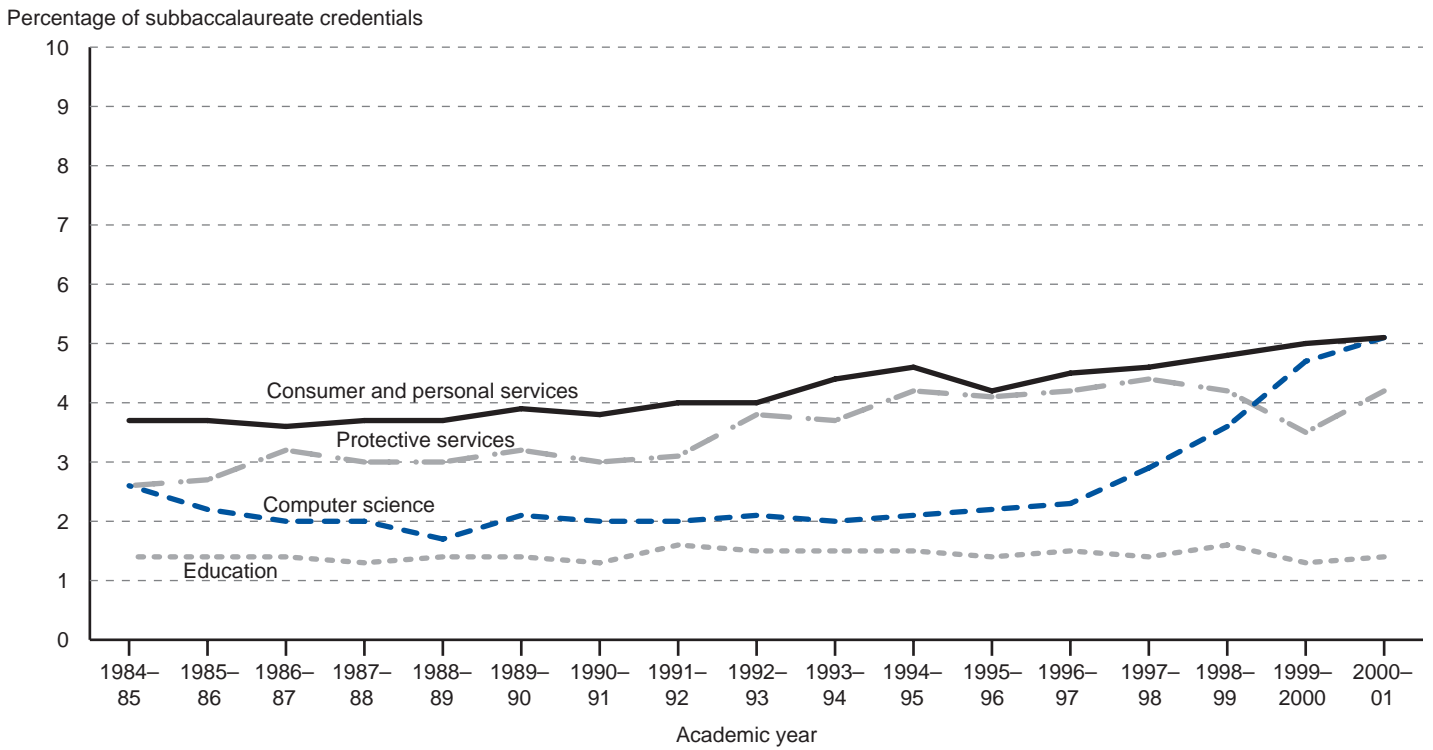
Figure A. Percentage of subbaccalaureate credentials awarded in health care, business/marketing, trade and industry, and engineering/architectural sciences: 1984-85 to 2000-01



NOTE: Y-axis scale differs from figures B and C.

SOURCE: *Digest of Education Statistics*, 1988-2002 editions; Higher Education General Information Survey (HEGIS), 1984-85 and 1985-86; 1986 to 1999 Integrated Postsecondary Education Data System, "Completions Survey" (IPEDS-C:86-87 through IPEDS-C:98-99); and 2000 Integrated Postsecondary Education Data System (IPEDS), Spring 2001, U.S. Department of Education, National Center for Education Statistics.

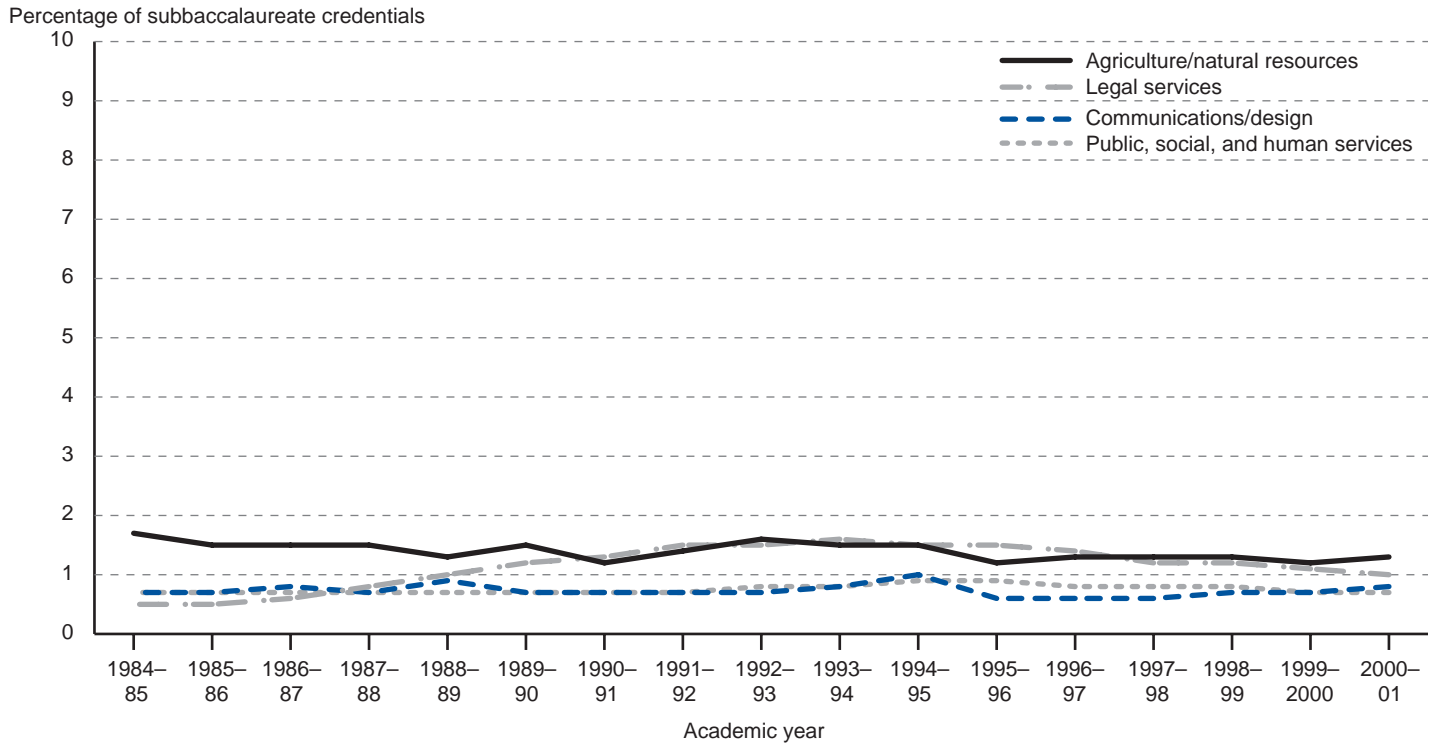
Figure B. Percentage of subbaccalaureate credentials awarded in consumer and personal services, computer science, protective services, and education: 1984–85 to 2000–01



NOTE: Y-axis scale differs from figure A.

SOURCE: *Digest of Education Statistics*, 1988–2002 editions; Higher Education General Information Survey (HEGIS), 1984–85 and 1985–86; 1986 to 1999 Integrated Postsecondary Education Data System, “Completions Survey” (IPEDS-C:86–87 through IPEDS-C:98–99); and 2000 Integrated Postsecondary Education Data System (IPEDS), Spring 2001, U.S. Department of Education, National Center for Education Statistics.

Figure C. Percentage of subbaccalaureate credentials awarded in agriculture/natural resources, legal services, communications/design, and public, social, and human services: 1984-85 to 2000-01



NOTE: Y-axis scale differs from figure A.

SOURCE: *Digest of Education Statistics*, 1988-2002 editions; Higher Education General Information Survey (HEGIS), 1984-85 and 1985-86; 1986 to 1999 Integrated Postsecondary Education Data System, "Completions Survey" (IPEDS-C:86-87 through IPEDS-C:98-99); and 2000 Integrated Postsecondary Education Data System (IPEDS), Spring 2001, U.S. Department of Education, National Center for Education Statistics.