

# PUBLIC SCOPING MEETINGS

## FOR THE NEXTGEN PROJECT

August 2007

2007 PUBLIC SCOPING MEETINGS WILL BE HELD AT THE FOLLOWING LOCATIONS:

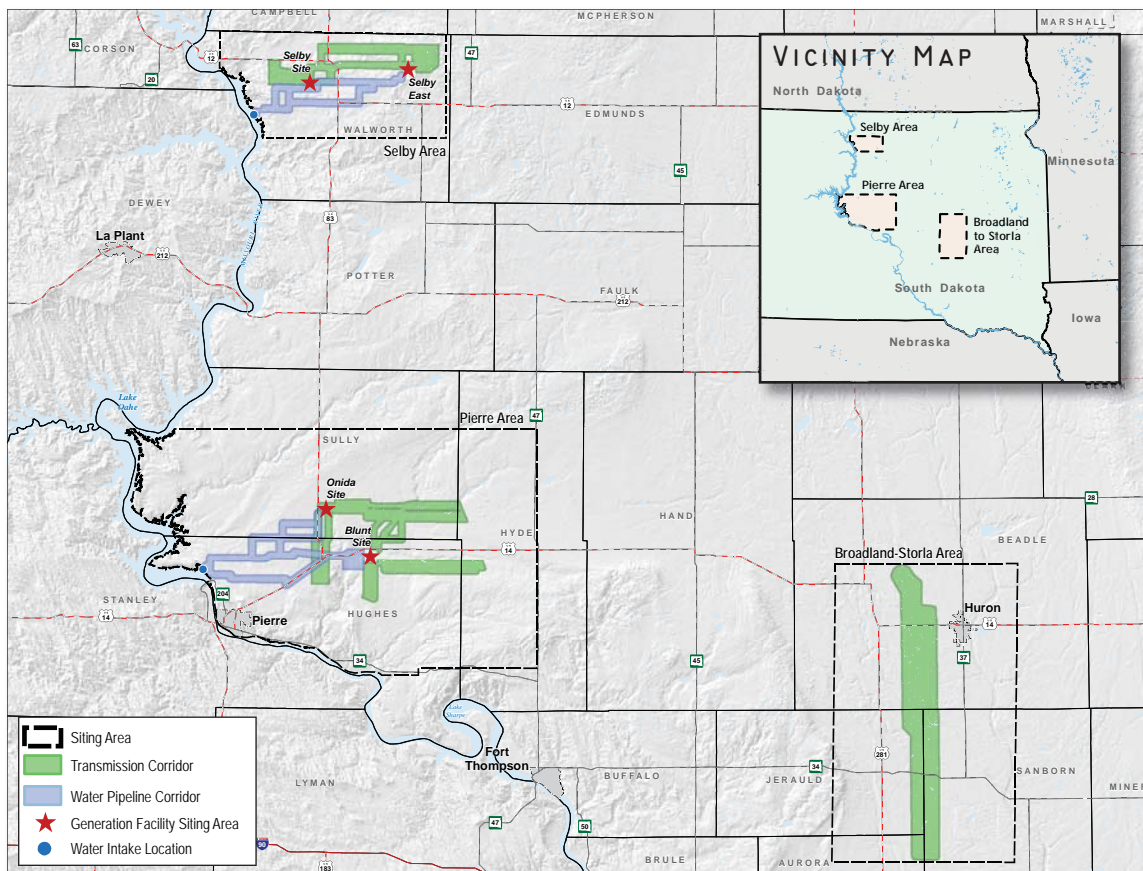
Tuesday, August 21, 5 – 8 p.m., Selby Opera House, 3409 Main Street, Selby, SD  
Wednesday, August 22, 5 – 8 p.m., Phoenix Center, 117 South Main Street, Onida, SD  
Thursday, August 23, 5 – 8 p.m., Woonsocket Community Center, Woonsocket, SD

Western Area Power Administration (Western) will host three public scoping meetings for the proposed NextGen Project. Basin Electric Power Cooperative (Basin Electric) has applied to interconnect the proposed Project with Western's power transmission system.

The public scoping meetings in Selby, Onida, and Woonsocket, South Dakota, will have an open-house format. These meetings will provide attendees the opportunity to meet one-on-one with project team members, ask questions, and offer feedback on the proposed Project. You are welcome to attend any time between 5 and 8 p.m. All of the meeting sites are handicapped accessible.

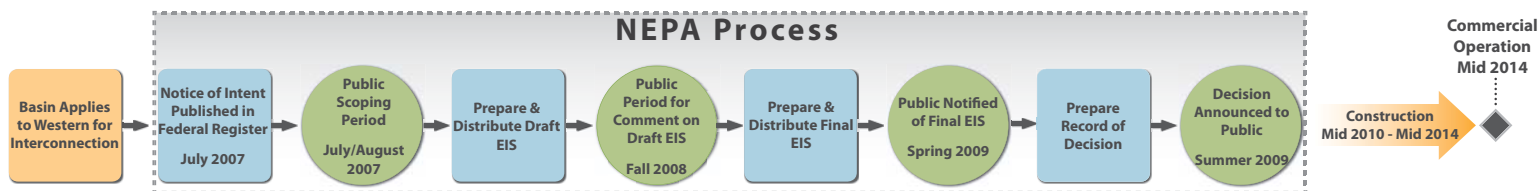
### THE PROPOSED NEXTGEN PROJECT

Basin Electric proposes to construct a 500- to 700-megawatt baseload generation facility. Four preliminary alternatives for the location of the generation facility in South Dakota are being considered: two in the Selby area and two in the Pierre area. Basin Electric's purpose for the proposed Project is to help meet the increased demand for electric power in the eastern portion of Basin Electric's nine-state service area. Basin Electric's service territory includes South Dakota, North Dakota, Colorado, Iowa, Minnesota, Nebraska, New Mexico, Montana, and Wyoming. Additional associated facilities include 230/345-kV transmission lines, a 36-inch to 42-inch water pipeline, and a water intake structure along Lake Oahe on the Missouri River.



## WHAT IS THE NATIONAL ENVIRONMENTAL POLICY ACT?

The National Environmental Policy Act (NEPA) is a law that requires Federal agencies to consider the potential environmental impacts of their actions. An Environmental Impact Statement (EIS) provides a detailed analysis of the potential impacts of a proposed action and the range of reasonable alternatives, including the no action alternative. Western will prepare an EIS for the proposed Project.



## HOW CAN I GET INVOLVED IN THE EIS PROCESS

Western's NEPA process will ensure that you have opportunities to provide comments and participate in the process. The Notice of Intent (NOI) was published in the *Federal Register* on July 27, 2007. Scoping continues through August 31, 2007. The scoping process provides the public and agencies opportunities for meaningful involvement in the decision-making process. Your comments will help us determine the scope of the EIS and identify significant issues and concerns related to the proposed Project.

## HOW CAN I GET MY COMMENTS TO WESTERN?

Comments must be in writing (see below). Please use the enclosed comment form, the online form, or your own letter in any format to submit your comments by August 31, 2007. Western is unable to accept anonymous comments.

## METHODS FOR SUBMITTING COMMENTS

### MAIL

Mail the enclosed form (postage paid) or send your own letter format to:

Catherine Cunningham  
Western Area Power Administration  
P.O. Box 281213  
Lakewood, CO 80228-8213

### FAX

Fax the form in your own letter format to 720-962-7269

### ONLINE

Fill out the on-line form located at [www.wapa.gov/transmission/internextgen.htm](http://www.wapa.gov/transmission/internextgen.htm)

### EMAIL

Send an e-mail or scan the form in your own letter format and attach it to an e-mail to [NextGenEIS@wapa.gov](mailto:NextGenEIS@wapa.gov)