

ENVIRONMENTAL RESOURCES

NEXTGEN PROJECT

WATER

- Water quality conditions
- Comsumptive use
- Water appropriations rights and existing water uses
- Locations of wetlands, floodplains, and groundwater resources



VISUAL

- Location of visual resources
- Visibility of the proposed project relative to the existing landscape



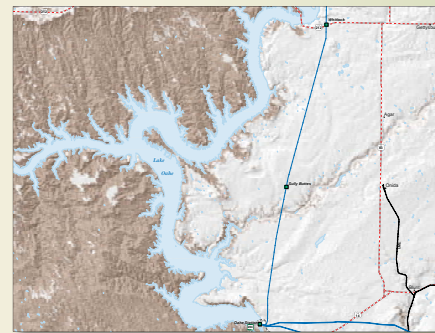
BIOLOGY

- Threatened, endangered, and special status species, migratory birds, and wetlands
- General wildlife, vegetation, and habitat surveys
- Mitigation plan to control the spread of noxious and invasive weeds



GEOLOGY & SOILS

- Geological surface features and the locations of potential seismic risk, mass movements, and historical earthquakes
- Locations of mineral, oil, and natural gas deposits



RESOURCES TO BE ANALYZED

LAND USE & RECREATION

- Project compatibility with local land use plans, county codes and ordinances, state parks, recreation areas, and wilderness areas
- Rural life, farming, and local recreational uses



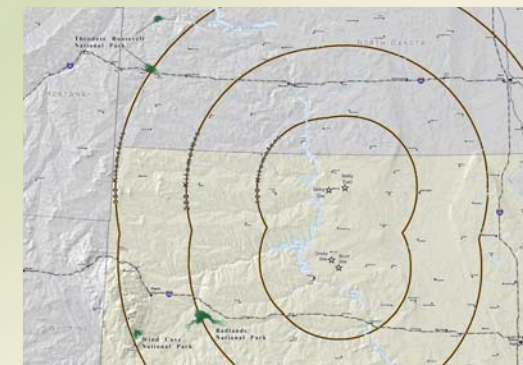
CULTURAL RESOURCES

- Compliance with the National Historic Preservation Act
- Review of historic, archaeological, and sensitive sites



SOCIOECONOMICS

- Project area demographics, including population, income, and employment
- Local economic effects of construction and operation



AIR

- Compliance with National Ambient Air Quality Standards and Prevention of Significant Deterioration and New Source Review regulations
- Impacts to Class I airsheds, including Badlands National Park, Wind Cave National Park, and Theodore Roosevelt National Park