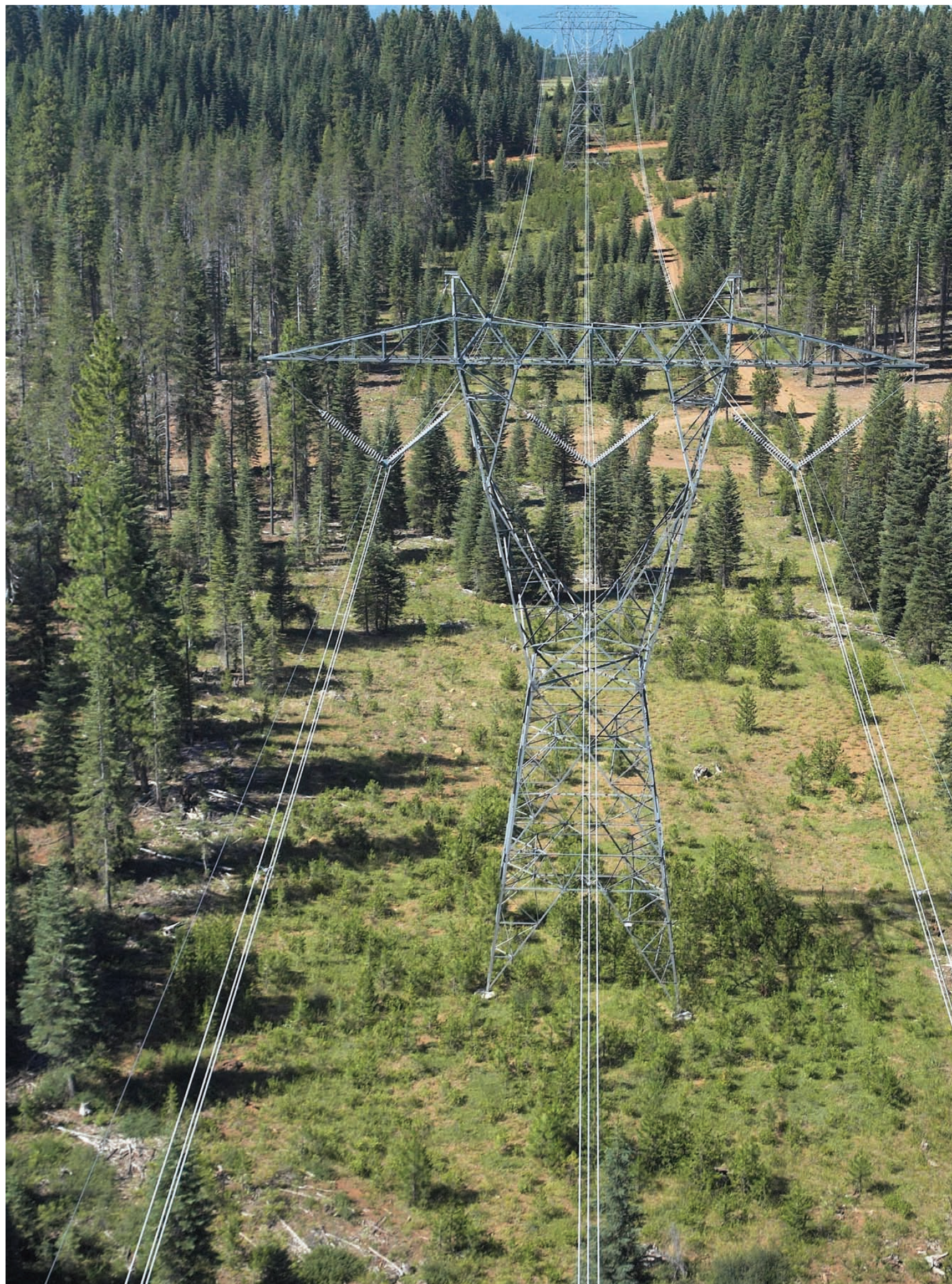


NEPA/CEQA Overview



What are NEPA and CEQA?

The National Environmental Policy Act (NEPA) and the California Environmental Quality Act (CEQA) were both established to help ensure protection of the human environment and keep the public informed of potential impacts from proposed projects. TANC and the Western Area Power Administration will be conducting a thorough environmental review process to comply with both CEQA and NEPA.

It will achieve the following:

- Provide information for **public review** and comment
- Evaluate reasonable **alternatives** that could reduce or avoid environmental impacts
- Identify significant **environmental impacts**
- Develop **mitigation** (ways to reduce or avoid environmental impacts)
- Disclose to **decision makers** the alternatives, impacts, mitigation, and feedback from Tribes, agencies, and the public

The information and analysis will be documented in the Draft and Final Joint Environmental Impact Report (EIR)/Environmental Impact Statement (EIS) that TANC and Western intend to prepare for the proposed TTP.

Who are Western, the U.S. Forest Service, and the Bureau of Land Management, and why are they involved?

Western markets Federal hydroelectric power to preference customers, as specified by law. These customers include municipalities, cooperatives, irrigation districts, Federal and State agencies, and Native American tribes in 15 western states, including California. Western owns and operates more than 17,000 miles of high-voltage transmission lines. Western is the lead federal agency with the primary responsibility for preparing the EIS for compliance with NEPA and must analyze the TTP's actions which are subject to Western's control and responsibility.

The Forest Service (USFS) and Bureau of Land Management (BLM) are cooperating agencies on this project because of their jurisdiction over proposed routing across public lands. TANC has applied to the USFS and the BLM for permits, which may involve amending current forest land and resource management plans and/or BLM resource management plans. Other agencies or tribes with jurisdiction or special expertise may be identified as cooperating agencies.