

RECLAMATION

Managing Water in the West



Operation of Flaming Gorge Dam Final Environmental Impact Statement

The mission of the Department of the Interior is to protect and provide access to our Nation's natural and cultural heritage and honor our trust responsibilities to Indian tribes and our commitments to island communities.

The mission of the Bureau of Reclamation is to manage, develop, and protect water and related resources in an environmentally and economically sound manner in the interest of the American public.

**Front cover artwork courtesy of
Arizona Game and Fish Department**

**Operation of Flaming Gorge Dam
Colorado River Storage Project
Final Environmental Impact Statement**

Cooperating Agencies:

U.S. Department of the Interior
Bureau of Reclamation (lead agency)
Bureau of Indian Affairs
Bureau of Land Management
National Park Service
U.S. Fish and Wildlife Service
State of Utah, Department of Natural Resources
United States Department of Agriculture, Forest Service
U.S. Department of Energy
Western Area Power Administration
Utah Associated Municipal Power Systems

Abstract:

The Secretary of the Interior, acting through the Bureau of Reclamation, proposes to take action to assist in the recovery of four endangered fish in the Green River downstream from Flaming Gorge Dam, a Colorado River Storage Project facility in northeastern Utah, with a reservoir located in Utah and Wyoming. The purpose of the proposed action is to operate Flaming Gorge Dam to protect and assist in recovery of the populations and designated critical habitat of four endangered fishes, while maintaining all authorized purposes of the Flaming Gorge Unit of the Colorado River Storage Project, particularly those related to the development of water resources in accordance with the Colorado River Compact. This final environmental impact statement has been prepared pursuant to the National Environmental Policy Act to analyze the effects of operating Flaming Gorge Dam in accordance with a set of flow and temperature recommendations developed by the Upper Colorado River Endangered Fish Recovery Program.

For Further Information, Contact:

Mr. Peter Crookston
Flaming Gorge EIS Manager, PRO-774
Bureau of Reclamation, Provo Area Office
302 East 1860 South
Provo, Utah 84606-7317
Telephone: (801) 379-1152
faxogram: (801) 379-1159
email: fgeis@uc.usbr.gov

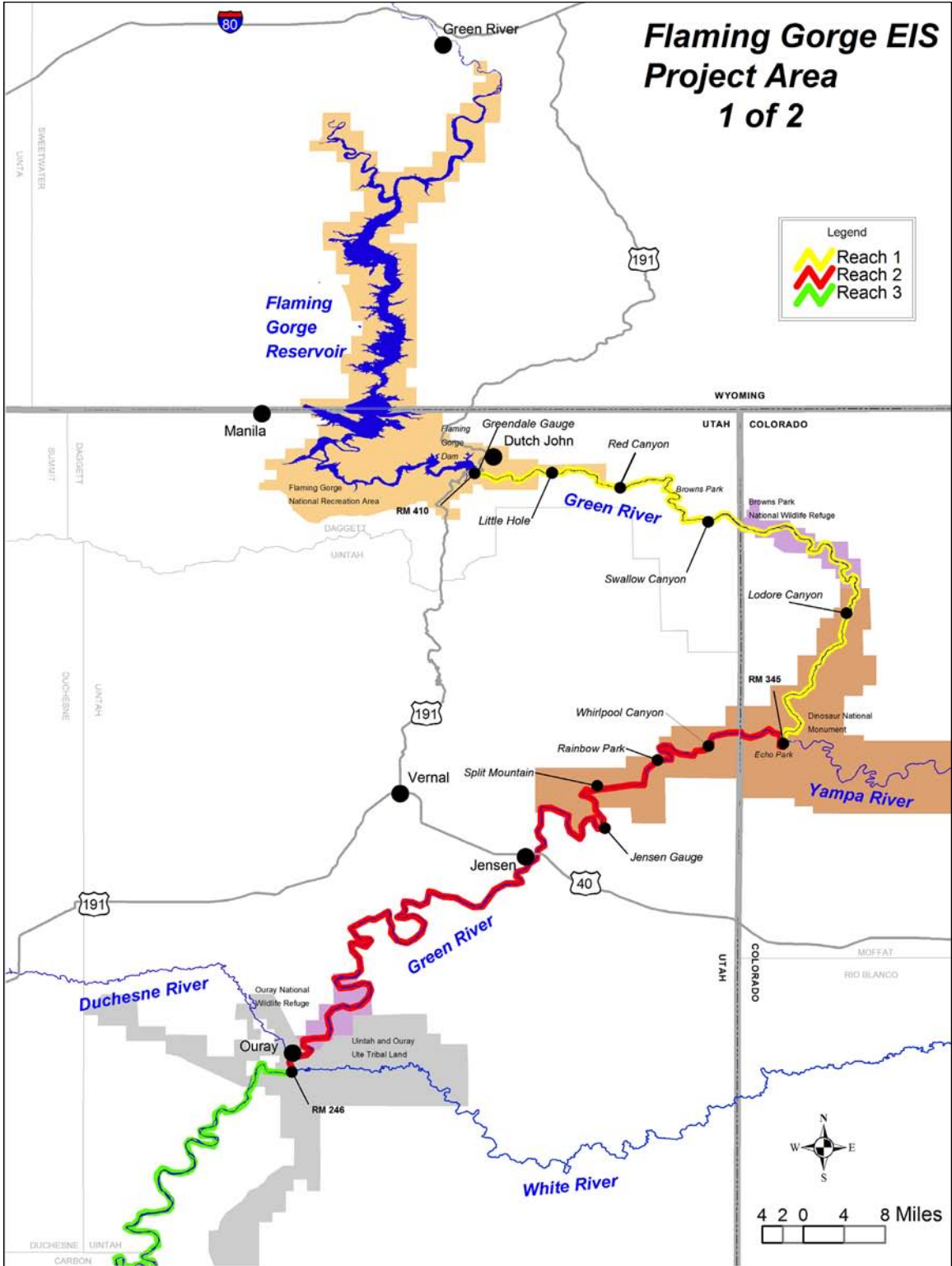
DOE Tracking Number: DOE/EIS-0315

Filing Number: FES-05-27

Flaming Gorge EIS Project Area 1 of 2

Legend

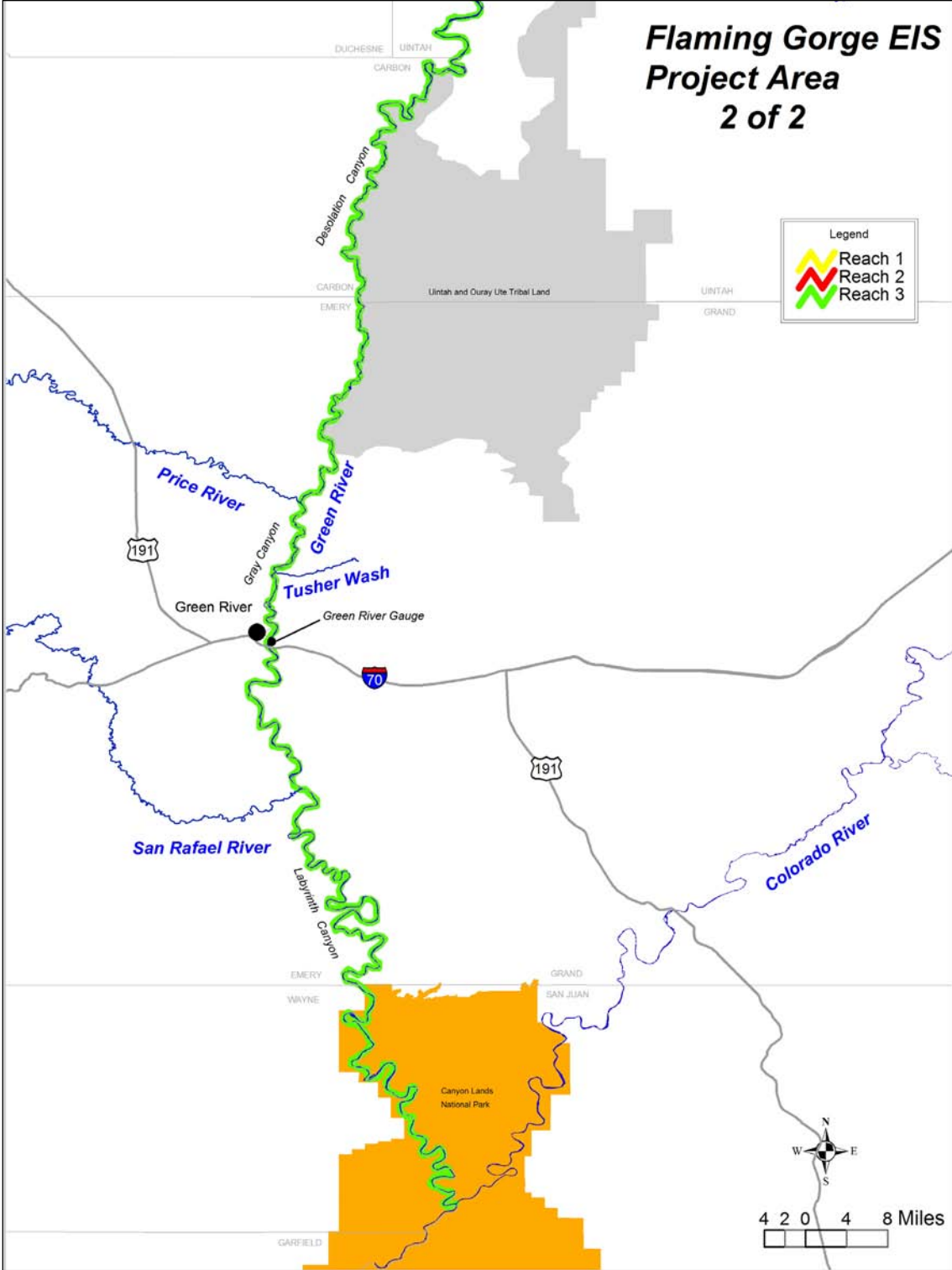
-  Reach 1
-  Reach 2
-  Reach 3

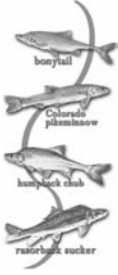


Flaming Gorge EIS Project Area 2 of 2

Legend

- Reach 1
- Reach 2
- Reach 3





CONTENTS

	<i>Page No.</i>
1.0 PROPOSED FEDERAL ACTION AND BACKGROUND	1
1.1 Purpose of and Need for the Proposed Federal Action	1
1.2 Lead and Cooperating Agencies	2
1.3 Contents of This Environmental Impact Statement	3
1.4 Background	3
1.4.1 Brief History of Flaming Gorge Dam and Reservoir.....	3
1.4.1.1 Authorized Uses of Flaming Gorge Dam and Reservoir and Colorado River Development	3
1.4.1.2 Authorized Uses of Flaming Gorge Dam and Reservoir: Flaming Gorge National Recreation Area	4
1.4.2 Operational Modifications Since the Beginning of Dam Operations	5
1.4.3 Compliance With the Endangered Species Act	6
1.4.4 Upper Colorado River Endangered Fish Recovery Program.....	6
1.4.5 Final Biological Opinion on the Operation of Flaming Gorge Dam and the Reasonable and Prudent Alternative.....	7
1.4.6 2000 Flow and Temperature Recommendations.....	8
1.4.7 New Biological Opinion on the Operation of Flaming Gorge Dam.....	8
1.5 Operational Decisionmaking Process at Flaming Gorge Dam.....	8
1.6 Emergency Powerplant Operations.....	9
1.6.1 Insufficient Generation Capacity	10
1.6.2 Transmission (Overload and Voltage Control).....	10
1.6.3 Load Shedding	11
1.6.4 System Restoration	11
1.6.5 Emergency Information Exchange.....	11
1.6.6 Special System or Control Area.....	11
1.7 Public Scoping Process for This Environmental Impact Statement.....	11
1.8 Scope of Analysis for This Environmental Impact Statement	12
1.8.1 Geographic Scope of Analysis for This Environmental Impact Statement.....	12
1.8.2 Public Issues and Concerns.....	13
1.8.3 Resources and Significant Issues To Be Analyzed in Detail	13
1.8.4 Issues Raised During Scoping Which Are Not Analyzed in Further Detail in This EIS	16
1.9 Related and Ongoing Actions	16
1.9.1 Regulatory Requirements.....	17
1.9.1.1 The Law of the River.....	17
1.9.1.2 National Parks and Recreation Areas	17
1.9.1.3 Environmental Compliance	17
1.9.1.4 Cultural Resource Laws.....	18
1.9.1.5 Native American Laws	18

1.9	Related and Ongoing Actions (continued)	
1.9.2	Related Programs, Projects, and Activities	18
1.9.2.1	Recovery Program	18
1.9.2.2	Interim Surplus Guidelines and Colorado River Basin Project Act 602(a) Storage Requirement	18
1.9.2.3	Relocation of Little Hole National Recreation Trail.....	19
1.9.2.4	Browns Park Highway Environmental Impact Statement ...	19
1.9.2.5	Cedar Springs Marina Environmental Impact Statement ...	19
1.9.2.6	Resource Management Plans and Wild and Scenic Rivers Eligibility Determination	20
1.9.2.7	Federal Reserve Water Rights	20
2.0	DESCRIPTION OF ALTERNATIVES	21
2.1	Introduction.....	21
2.2	Development of Alternatives	22
2.2.1	Criteria Used to Select Alternatives	22
2.2.2	Alternatives Considered but Eliminated From Detailed Study.....	22
2.2.2.1	Modified Run of the River Alternative.....	22
2.2.2.2	Decommissioning and Removing Flaming Gorge Dam.....	23
2.3	Description of the Alternatives Analyzed in This Environmental Impact Statement	23
2.3.1	No Action Alternative.....	23
2.3.2	Action Alternative.....	24
2.4	Review of Flaming Gorge Model Developed for the Flaming Gorge Dam EIS	26
2.4.1	Review Findings	27
2.5	Operational Description	27
2.5.1	Safe Operation of Flaming Gorge Dam	28
2.5.2	Reservoir Operations Process Under the No Action Alternative.....	29
2.5.2.1	Operations in May Through July (Spring Period)	29
2.5.2.2	Use of Bypass Tubes and Spillway at Flaming Gorge Dam.....	30
2.5.2.3	Summer and Fall Operations (Early Base Flow Period).....	30
2.5.2.4	Winter Operations (Late Base Flow Period).....	30
2.5.3	Reservoir Operations Process Under the Action Alternative.....	31
2.5.3.1	Operations in May Through July (Spring Period)	31
2.5.3.2	Use of Bypass Tubes and Spillway at Flaming Gorge Dam.....	34
2.5.3.3	Operations in August Through February (Base Flow Period)	35
2.5.3.4	Operations in March and April (Transition Period).....	35
2.6	Summary Comparison of the Predicted Environmental Effects of All Alternatives	36
2.6.1	Hydrology	36
2.6.2	Water Quality, Water Temperature, and Sediment Transport	40
2.6.3	Hydropower	41
2.6.4	Agriculture	42
2.6.5	Land Use	42
2.6.6	Ecological Resources	42
2.6.6.1	Threatened and Endangered Fish.....	43

2.6	Summary Comparison of the Predicted Environmental Effects of All Alternatives (continued)	
	2.6.6.2 Other Threatened and Endangered Species	43
	2.6.6.3 Other Special Status Species	43
	2.6.7 Cultural Resources	43
	2.6.8 Paleontological Resources	44
	2.6.9 Indian Trust Assets.....	44
	2.6.10 Safety and Public Health.....	44
	2.6.11 Air Quality	44
	2.6.12 Visual Resources.....	44
	2.6.13 Environmental Justice	44
	2.6.14 Recreation	44
	2.6.15 Socioeconomics/Regional Economics	44
2.7	Preferred Alternative.....	45
3.0	AFFECTED ENVIRONMENT	47
3.1	Introduction.....	47
3.2	Potentially Affected Area.....	48
	3.2.1 Description of Flaming Gorge Dam, Powerplant, and Reservoir	48
	3.2.1.1 Flaming Gorge Dam and Reservoir	48
	3.2.1.2 Flaming Gorge Dam River Outlet Works and Spillway	48
	3.2.1.3 Flaming Gorge Powerplant	48
	3.2.1.4 Flaming Gorge Dam Selective Withdrawal Structure.....	49
3.3	Water Resources and Hydrology	49
	3.3.1 Flaming Gorge Reservoir Hydrology.....	49
	3.3.2 Flaming Gorge Reservoir Water Quality and Temperature	49
	3.3.3 Green River Hydrology.....	53
	3.3.3.1 Reach 1	54
	3.3.3.2 Reach 2	54
	3.3.3.3 Reach 3	54
	3.3.4 Green River Water Quality and Water Temperature	55
	3.3.4.1 Reach 1	55
	3.3.4.2 Reach 2	57
	3.3.4.3 Reach 3	59
	3.3.5 Sediment Transport and Geomorphology	59
3.4	Hydropower Generation and Marketing	60
	3.4.1 Hydropower Operations	62
3.5	Agriculture	62
	3.5.1 Census of Agriculture Data.....	63
	3.5.2 Utah Agricultural Statistics	63
3.6	Land Status and Use.....	64
	3.6.1 Flaming Gorge Dam and Reservoir	64
	3.6.2 Green River Downstream From Flaming Gorge Dam.....	64
3.7	Ecological Resources	67
	3.7.1 Flaming Gorge Dam and Reservoir	67
	3.7.1.1 Aquatic Animals	67
	3.7.1.2 Aquatic Food Base.....	68
	3.7.1.3 Vegetation.....	68
	3.7.1.4 Terrestrial and Avian Animals.....	68

3.7	Ecological Resources (continued)	
3.7.2	Green River Downstream From Flaming Gorge Dam	68
3.7.2.1	Aquatic Animals Overview	68
3.7.2.2	Native Fish Species Overview	70
3.7.2.3	Reach 1	72
3.7.2.4	Reach 2	78
3.7.2.5	Reach 3	82
3.7.2.6	Vegetation.....	86
3.7.2.7	Terrestrial and Avian Animals.....	91
3.7.3	Other Threatened and Endangered Species.....	95
3.7.3.1	Southwestern Willow Flycatcher.....	95
3.7.3.2	Ute Ladies'-Tresses	96
3.7.3.3	Bald Eagle.....	97
3.7.3.4	Black-Footed Ferret	97
3.7.3.5	Canada Lynx	97
3.7.3.6	Mexican Spotted Owl	97
3.7.4	Other Special Status Species.....	98
3.7.4.1	Yellow-Billed Cuckoo	98
3.7.4.2	Whooping Crane	98
3.8	Cultural Resources	99
3.8.1	Definition of Affected Environment	99
3.8.1.1	Flaming Gorge Reservoir	100
3.8.1.2	Green River.....	100
3.9	Paleontological Resources	105
3.10	Indian Trust Assets.....	106
3.11	Recreation	107
3.11.1	Geographic Impact Area	107
3.11.2	Current Conditions	110
3.11.2.1	Current Hydrology.....	110
3.11.2.2	Current Annual Recreation Visitation	111
3.11.2.3	Current Annual Recreation Economic Value	113
3.12	Socioeconomics and Regional Economics.....	113
3.12.1	Geographic Impact Area	113
3.12.2	Current Conditions	115
3.13	Public Safety and Public Health.....	115
3.13.1	Public Safety Considerations for the Reservoir and the River Immediately Below the Dam	115
3.13.2	Public Safety Considerations for the Green River	117
3.13.3	Public Health: Disease Vectors.....	117
3.14	Air Quality	119
3.15	Visual Resources.....	120
3.15.1	Scenic Integrity	120
3.15.2	Constituent Information	120
3.15.3	Landscape Visibility	121
3.16	Environmental Justice	121
4.0	ENVIRONMENTAL CONSEQUENCES	125
4.1	Introduction.....	125
4.2	Flaming Gorge Facilities.....	125
4.2.1	Spillway	125

4.2	Flaming Gorge Facilities (continued)	
4.2.1	Spillway (continued)	
4.2.1.1	No Action Alternative.....	125
4.2.1.2	Action Alternative	125
4.2.2	Selective Withdrawal Structure	126
4.2.2.1	No Action Alternative.....	126
4.2.2.2	Action Alternative	126
4.3	Water Resources	126
4.3.1	Hydrology, Flaming Gorge Reservoir.....	126
4.3.1.1	Evaluation Methodology	127
4.3.1.2	Reservoir Average Monthly Elevations.....	127
4.3.1.3	Frequency of Reservoir Elevation	128
4.3.2	Hydrology, Green River.....	130
4.3.2.1	Evaluation Methodology for the Hydrologic Modeling	130
4.3.2.2	Reach 1– Average Monthly Flows	132
4.3.2.3	Reach 1 – Spring Peak Flows	132
4.3.2.4	Reach 2 – Average Monthly Flows	134
4.3.2.5	Reach 2 – Spring Peak Flows	135
4.3.2.6	Reach 3 – Average Monthly Flows	137
4.3.2.7	Reach 3 – Spring Peak Flows	138
4.3.3	Water Quality, Flaming Gorge Reservoir	139
4.3.3.1	No Action Alternative.....	139
4.3.3.2	Action Alternative	140
4.3.4	Water Quality, Green River Reach 1	141
4.3.4.1	Temperature Evaluation Methodology	141
4.3.4.2	Sediment Transport.....	143
4.3.5	Water Quality, Green River Reach 2	143
4.3.5.1	Water Temperature	144
4.3.5.2	Sediment Transport.....	144
4.3.6	Water Quality, Green River Reach 3	145
4.3.6.1	Water Temperature	145
4.3.6.2	Sediment Transport.....	146
4.4	Hydropower Generation.....	148
4.4.1	Economic Analysis Methodology	148
4.4.2	Economic Analysis Results.....	149
4.4.3	Financial Analysis of Power Generation.....	151
4.4.3.1	Description of the Customers Who Buy Electricity Generated at Flaming Gorge.....	151
4.4.3.2	Method for Determining the SLCA/IP Rate Impact of the Action Alternative	152
4.4.3.3	Financial Analysis Results.....	152
4.5	Agriculture	152
4.5.1	Introduction and Methodology.....	152
4.5.2	Comparison of Impacts for the No Action and Action Alternatives	153
4.6	Land Use	154
4.6.1	Flaming Gorge Reservoir and National Recreation Area	154
4.6.2	Green River Reach 1	155
4.6.3	Green River Reach 2.....	155
4.6.4	Green River Reach 3.....	156

	<i>Page No.</i>
4.7 Ecological Resources	156
4.7.1 Flaming Gorge Reservoir	156
4.7.1.1 Reservoir Fish	156
4.7.1.2 Aquatic Food Base	157
4.7.1.3 Vegetation	157
4.7.1.4 Terrestrial and Avian Animals	157
4.7.2 Green River Downstream From Flaming Gorge Dam – Reach 1	158
4.7.2.1 Aquatic Food Base	158
4.7.2.2 Threatened and Endangered Fish	159
4.7.2.3 Nonlisted Native Fish	162
4.7.2.4 Nonnative Fish	163
4.7.3 Green River Downstream From Flaming Gorge Dam – Reach 2	166
4.7.3.1 Aquatic Animals	166
4.7.3.2 Threatened and Endangered Fish	167
4.7.4 Green River Downstream From Flaming Gorge Dam – Reach 3	172
4.7.4.1 Aquatic Animals	172
4.7.4.2 Threatened and Endangered Fish	173
4.7.4.3 Fish – Summary of Environmental Consequences	176
4.7.5 Vegetation	177
4.7.5.1 Reach 1	177
4.7.5.2 Reach 2	180
4.7.5.3 Reach 3	181
4.7.6 Summary of Vegetation	181
4.7.7 Terrestrial and Avian Animals	182
4.7.7.1 Reach 1	182
4.7.7.2 Reach 2	183
4.7.7.3 Reach 3	183
4.7.8 Other Threatened and Endangered Species	184
4.7.8.1 Southwestern Willow Flycatcher	184
4.7.8.2 Ute Ladies’-Tresses	185
4.7.8.3 Bald Eagle	187
4.7.8.4 Black-Footed Ferret	187
4.7.8.5 Lynx	187
4.7.8.6 Other Special Status Species	188
4.8 Cultural Resources	189
4.8.1 Flaming Gorge Reservoir	189
4.8.1.1 No Action Alternative	190
4.8.1.2 Action Alternative	190
4.8.2 Green River – Reaches 1, 2, and 3	190
4.8.2.1 No Action Alternative	190
4.8.2.2 Action Alternative	190
4.8.3 Summary of Effects to Cultural Resources	191
4.9 Paleontological Resources	192
4.9.1 No Action Alternative	192
4.9.2 Action Alternative	192

	<i>Page No.</i>
4.10 Indian Trust Assets.....	192
4.10.1 No Action Alternative.....	192
4.10.2 Action Alternative.....	193
4.11 Recreation	193
4.11.1 Visitation, Recreation Infrastructure, and Economic Value Methodology	193
4.11.2 Recreation Safety Methodology.....	196
4.11.3 Annual Recreation Visitation and Valuation Results.....	196
4.11.3.1 No Action Alternative.....	197
4.11.3.2 Action Alternative	202
4.11.4 Flaming Gorge Reservoir Recreation Safety Results.....	209
4.11.5 Green River Recreation Safety Results.....	211
4.12 Socioeconomics and Regional Economics.....	211
4.12.1 Methodology	214
4.12.1.1 Regional Economics Modeling Methodology	214
4.12.1.2 Commercial Operator Survey Methodology.....	216
4.12.2 Results.....	216
4.12.2.1 Results of Regional Economic Analysis.....	216
4.12.2.2 Results of Commercial Operator Analysis	220
4.13 Public Safety and Public Health.....	226
4.13.1 Public Safety on Flaming Gorge Reservoir	226
4.13.2 Public Safety on the Green River.....	226
4.13.3 Disease Vectors.....	227
4.13.3.1 No Action Alternative.....	227
4.13.3.2 Action Alternative	227
4.13.4 Air Quality	228
4.14 Visual Resources.....	229
4.14.1 Flaming Gorge Reservoir.....	229
4.14.1.1 No Action Alternative.....	229
4.14.1.2 Action Alternative	229
4.14.2 Green River.....	229
4.14.2.1 No Action Alternative.....	229
4.14.2.2 Action Alternative	230
4.15 Environmental Justice	230
4.15.1 No Action Alternative.....	230
4.15.2 Action Alternative.....	230
4.16 Cumulative Impacts	231
4.16.1 Water Resources and Hydrology	232
4.16.1.1 Water Consumption.....	232
4.16.1.2 Water Temperature	232
4.16.1.3 Sediment Transport and Channel Morphology.....	233
4.16.2 Hydropower	233
4.16.3 Land Use	234
4.16.4 Ecological Resources	235
4.16.4.1 Native Fish.....	235
4.16.4.2 Nonnative Fish.....	238
4.16.4.3 Vegetation.....	239
4.16.4.4 Terrestrial Wildlife	239
4.16.4.5 Other Threatened and Endangered Species	239

	<i>Page No.</i>
4.16 Cumulative Impacts (continued)	
4.16.4 Ecological Resources (continued)	
4.16.4.6 Special Status Species.....	240
4.16.5 Cultural Resources.....	240
4.16.5.1 Flaming Gorge Reservoir.....	240
4.16.5.2 Reaches 1 and 2.....	241
4.16.5.3 Reach 3.....	241
4.16.6 Paleontological Resources.....	241
4.16.7 Indian Trust Assets.....	241
4.16.8 Recreation.....	242
4.16.9 Socioeconomics.....	242
4.16.10 Public Safety.....	242
4.16.10.1 Vectors.....	242
4.16.11 Environmental Justice.....	243
4.17 Relationship Between Short-Term Uses of the Environment and Long-Term Productivity.....	243
4.18 Irreversible and Irrecoverable Commitments of Resources.....	243
4.19 Uncertainties.....	243
4.19.1 Hydrology.....	244
4.19.2 Operational Limitations for Temperature of Water Released From the Dam.....	245
4.19.3 Uncertainties Associated With Increased Spillway Use.....	245
4.19.4 Fish Responses to Flow and Temperature Modifications.....	245
4.19.5 Uncertainties Associated With Flood Plain Inundation.....	247
4.19.6 Riparian/Vegetation.....	251
4.20 Addressing Uncertainties Through Adaptive Management.....	251
4.21 Environmental Commitments.....	252
5.0 CONSULTATION, COORDINATION, AND PUBLIC INVOLVEMENT.....	255
5.1 Consultation and Coordination With Other Agencies and Organizations and Native American Tribes.....	255
5.2 Public Involvement.....	256
5.3 Distribution List.....	256
LIST OF PREPARERS.....	267
CONVERSION TABLES.....	271
GLOSSARY.....	273
BIBLIOGRAPHY.....	279
INDEX.....	301

TABLES

<i>Table No.</i>	<i>Page No.</i>
2-1 Recommended Magnitudes and Duration of Maximum Spring Peak and Summer-to-Winter Base Flows and Temperatures for Endangered Fishes in the Green River Downstream From Flaming Gorge Dam as Identified in the 2000 Flow and Temperature Recommendations.....	25

TABLES (CONTINUED)

<i>Table No.</i>		<i>Page No.</i>
2-2	CRFSTC Recommended Forecast Errors for Flaming Gorge Dam.....	28
2-3	Upper Limit Drawdown Levels for Flaming Gorge Reservoir.....	29
2-4	Percentage Exceedances and Hydrologic Classifications	31
2-5	Examples of Real-Time and Other Year-Specific Information To Be Considered in Determining Annual Patterns of Releases From Flaming Gorge Dam for Implementation of the 2000 Flow and Temperature Recommendations to Benefit Endangered Fishes in Downstream Reaches From the Green River	33
2-6	Dry Hydrology Scenario	37
2-7	Average Hydrology Scenario.....	38
2-8	Wet Hydrology Scenario.....	39
2-9	Weight and Percent Increase in Sediment Load Under the Action Alternative, Above That for the No Action Alternative.....	41
2-10	Table of Comparisons of the Alternatives for Hydropower.....	42
3-1	Pre-Dam Daily Water Temperature Statistics in Degrees Celsius for the USGS Gauging Station at Greendale, Utah, Below Flaming Gorge Dam, During 1956-61	55
3-2	Daily Statistics for Predicted Flaming Gorge Release Temperatures in Degrees Celsius Based on Modeling Using CEQUAL-W2.....	56
3-3	Daily Statistics for Water Temperatures in Degrees Celsius at the Greendale, Utah, USGS Gauging Station Below Flaming Gorge Dam During the Period 1993-2001	57
3-4	Daily Statistics for Water Temperatures in Degrees Celsius at the Browns Park, U.S. Fish and Wildlife Service Measuring Station During the Period 1993-2001	57
3-5	Differences in Daily Mean Temperatures in Degrees Celsius Between the Green and Yampa Rivers as Measured at the Echo Park Gauging Stations Located in Both Rivers Above the Confluence.....	57
3-6	Daily Statistics for Water Temperatures at Green River, Utah, USGS Gauging Station During the Period 1993-2001.....	59
3-7	Primary Crop Acreages for Uintah County, Utah, for 1996-2000.....	64
3-8	Crop Yields for Uintah County, Utah, 1996-2000.....	65
3-9	Prices Received by Crop (1996-2000)	65
3-10	Average Annual Gross Income for the Crops Grown in Uintah County	65
3-11	Cultural Resources Inundated by Flaming Gorge Reservoir by Prior Mitigation, Cultural Resource Site Type, Age, and NRHP Eligibility	101
3-12	Cultural Resources Immediately Above the Flaming Gorge Reservoir Pool by Prior Mitigation, Cultural Resource Site Type, Age, and NRHP Eligibility	103

TABLES (CONTINUED)

<i>Table No.</i>		<i>Page No.</i>
3-13	Cultural Resources Within the Reaches 1 and 2 Areas of Potential Effects by Direct or Indirect Impacts, Age, Cultural Resource Site Type, and NRHP Eligibility.....	103
3-14	Cultural Resources Within the Reach 3 Area of Potential Effects by Direct or Indirect Impacts, Age, Cultural Resource Site Type, and NRHP Eligibility.....	105
3-15	Current Hydrology	111
3-16	Current Green River and Flaming Gorge Reservoir Visitation by Month and Activity	112
3-17	Current Green River and Flaming Gorge Reservoir Annual Value Estimates by Activity	114
3-18	Current Conditions.....	116
3-19	Population by Race and Hispanic Origin.....	122
3-20	Poverty	124
4-1	Reach 1 Flow Objective Comparison of Action and No Action Alternatives	134
4-2	Reach 2 Flow Objective Comparison of Action and No Action Alternatives	136
4-3	Reach 3 Flow Objective Comparison of Action and No Action Alternatives	139
4-4	River Temperatures at Four Locations Downstream From Flaming Gorge Dam Under Varying Release Volumes and Release Temperatures	142
4-5	Comparison of the Annual Economic Benefits of the Flaming Gorge Powerplant Between the Action and No Action Alternatives	150
4-6	Change in SLCA/IP Electricity Price as a Result of the Action Alternative.....	152
4-7	Probability of Occurrence and Average Duration of Riverflows for the No Action and Action Alternatives.....	153
4-8	Summary of Environmental Consequences to the Riverine Fish Community (Most Common Species) of Implementing a No Action (1992 Biological Opinion Flows) or Action (2000 Flow and Temperature Recommendations [2000 FTR]) Alternative	follows page 176
4-9	Summary of Effects to Vegetation Under the No Action and Action Alternatives for Reach 1 and Reach 2.....	178
4-10	Flaming Gorge Reservoir Facility Usability Thresholds	195
4-11	Green River Facility Usability Thresholds	197
4-12	No Action Alternative, Green River Reach 1 Average Monthly Flows (in cfs) by Hydrologic Condition	199
4-13	No Action Alternative, Flaming Gorge Reservoir Average End-of-Month Water Levels (in Feet Above msl) by Hydrologic Condition	200
4-14	No Action Alternative Annual Water-Based Visitation.....	201
4-15	No Action Alternative Annual Valuation	203
4-16	Action Alternative Green River Reach 1 Flows (in cfs) by Hydrologic Condition and Month.....	follows page 204

TABLES (CONTINUED)

<i>Table No.</i>		<i>Page No.</i>
4-17	Action Alternative Flaming Gorge Reservoir Water Levels (in Feet Above msl) by Hydrologic Condition and Month follows page	204
4-18	Annual Water-Based Visitation for Green River and Flaming Gorge Reservoir for Action Alternative.....	205
4-19	Annual Water-Based Activity Valuation for Green River and Flaming Gorge Reservoir for Action Alternative	208
4-20	Percent of Time Flaming Gorge Reservoir Recreation Activities Are Unsafe	210
4-21	Percent of Time Green River Recreation Activities Are Unsafe	212
4-22	No Action Alternative Recreation Expenditures..... follows page	218
4-23	No Action Alternative..... follows page	218
4-24	Action Alternative Recreation Expenditures follows page	218
4-25	Action Alternative Average Condition	219
4-26	Action Alternative Wet Condition	221
4-27	Action Alternative Dry Condition.....	222
4-28	Green River Commercial Operator Hydrology Comparisons	224
4-29	Flaming Gorge Reservoir Commercial Operator Hydrology Comparisons	224
4-30	Comparisons of the Alternatives and a Cumulative Impact Simulation.....	235
4-31	Cumulative Impacts on Native Fish.....	236

FIGURES

<i>Figure No.</i>		<i>Page No.</i>
3-1	Figures 3-1 and 3-2 depict the magnitude of algal blooms at Flaming Gorge in 1975 and in 1992 during years with minimal summer drawdown.....	51
3-2	See above	52
3-3	Green River Historic Flows at Greendale, Utah, Located 0.25 Mile Downstream From Flaming Gorge Dam	53
3-4	2002 Hourly Temperature Variations From Flaming Gorge Dam to the Yampa River Confluence	58
4-1	Average End-of-Month Flaming Gorge Reservoir Elevations	128
4-2	February Reservoir Elevation Distribution Plot.....	129
4-3	June Reservoir Elevation Distribution Plot.....	129
4-4	Reach 1 Average Monthly Flows.....	133
4-5	Reach 1, 1-Day Peak Flow Distribution	133
4-6	Reach 2 Average Monthly Flows.....	135
4-7	Reach 2, 1-Day Average Peak Flow Distribution	136
4-8	Reach 3 Average Monthly Flows.....	137
4-9	Reach 3, 1-Day Average Peak Flow Distribution.....	138

FIGURES (CONTINUED)

<i>Figure No.</i>		<i>Page No.</i>
4-10	Reservoir Elevation Comparison for the End of September	140
4-11	Average Monthly Total Load Sediment Transport in Reach 1	144
4-12	Average Monthly Sand Load Transport in Reach 2.....	146
4-13	Average Monthly Sand Load Transport in Reach 3.....	147
4-14	Thermal Units Accumulated in Upper Lodore Canyon (46 Miles Below Flaming Gorge Dam) Under Various Hydrologic Scenarios	161
4-15	Thermal Units Accumulated in Upper Lodore Canyon (46 Miles Below Flaming Gorge Dam) Under Various Hydrologic Scenarios	247
4-16	Cumulative Area of Priority Depression Flood Plain Inundated at 13,000 cfs and 18,600 cfs and Proportion of Larvae Entering River Mile According to Distance Downstream From the Razorback Spawning Bar	249