

Missouri River InfoLINK

Understanding the Missouri River

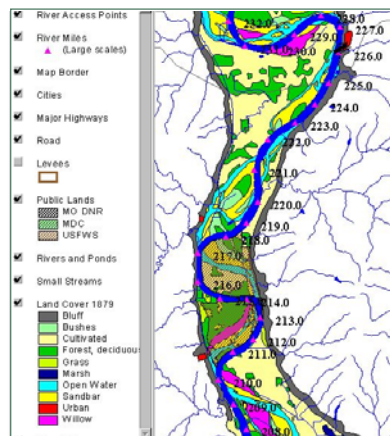
The mission of the Missouri River InfoLINK is to enhance awareness and understanding of the Missouri River. The InfoLINK is for Missouri River stakeholders who represent diverse river interests - people that want to understand how the river functions and need to make informed decisions about its management. It provides information through a web page with interactive maps, outreach materials, and presentations that interpret scientific findings.

The Missouri River flows 2,341 miles from the Rocky Mountains through the Great Plains to its confluence with the Mississippi River in St. Louis. Its watershed drains one-sixth of the United States. The once meandering river is channelized in the lower third and impounded by six dams in much of the upper. The U.S. Army Corps of Engineers regulates the water flow through the river system for multiple uses.

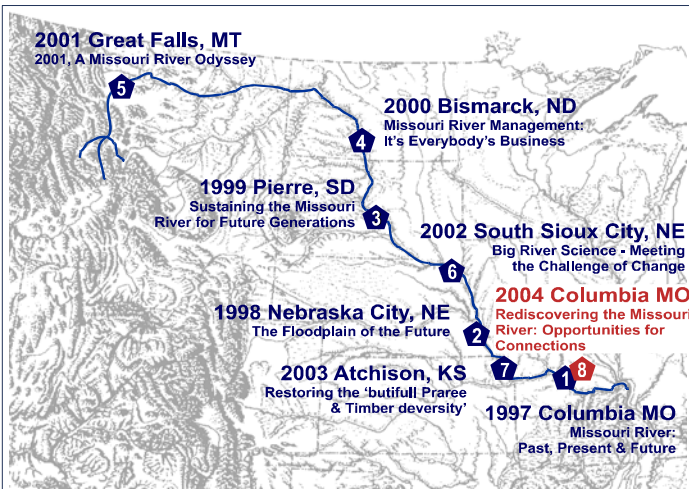
Decisions related to Missouri River management affect the lifestyles of Americans from Montana to Missouri. It is the vision of the InfoLINK partners that sharing information on the Missouri River will facilitate communication among all of the basin's citizens.



Missouri River InfoLINK web page
<http://infolink.cr.usgs.gov/>



To provide Missouri River stakeholders a "sense of place" and facilitate their understanding of the river's complex resource management issues, the InfoLINK web page serves as an information clearinghouse with interactive GIS maps.



The Missouri River InfoLINK is a program of the USGS Columbia Environmental Research Center

Supporting Partners
 U.S. Environmental Protection Agency
 USGS Mid-Continent Mapping Center
 National Biological Information Infrastructure
 USGS Office of Information and Outreach
 Environmental Systems Research Institute (ESRI)
 U.S. Fish and Wildlife Service

Community Partners
 Coordinated Resource Management Program, Bismarck, ND
 Missouri River Communities Network, Columbia, MO
 Missouri River Basin Association
 Missouri River Natural Resources Committee

For Information, contact:
 Jeanne Heuser, 573-876-1876, jeanne_heuser@usgs.gov
 USGS Columbia Environmental Research Center
 4200 New Haven Road, Columbia, MO 65201

The InfoLINK partners with the Missouri River Natural Resources Committee and other local organizations to conduct the annual Missouri River Natural Resources Conference.