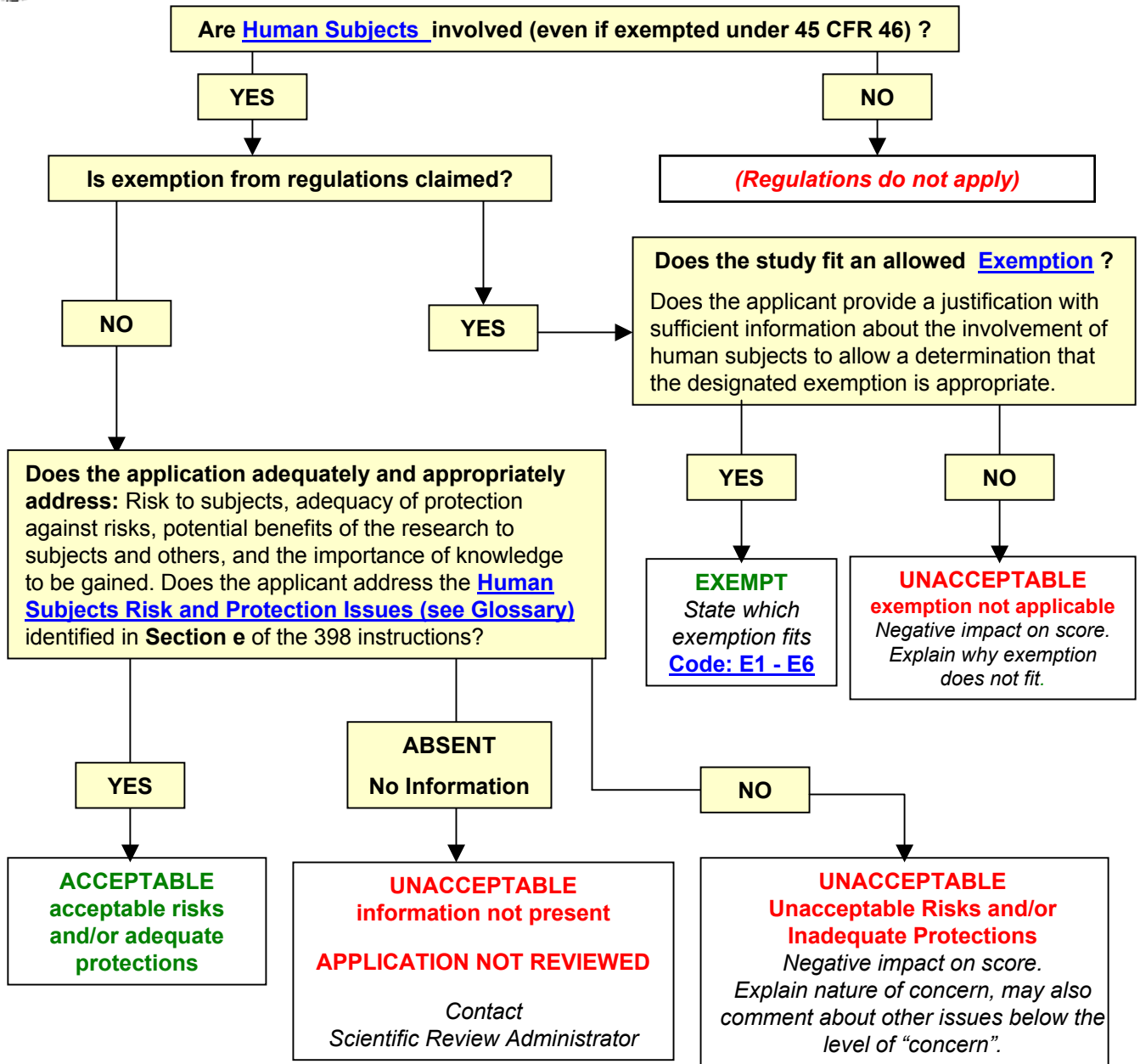




# Decision Tree for Protection of Human Subjects from Research Risk



## Summary of Reviewer Choices:

Human subjects not involved

Human subjects involved, **ACCEPTABLE**

Human subjects involved, **UNACCEPTABLE**

Human subjects involved and exempt claimed

Exemptions (see Glossary)

**E1** -- Instructional strategies in established educational settings

**E2** -- Educational tests unlinkable to individuals and no risks from disclosure

**E3** -- Educational tests on public officials, or absolute confidentiality federally mandated

**E4** -- Existing data/specimens, publicly available, unlinkable to individuals

**E5** -- Demonstration projects concerning public benefit or service programs

**E6** -- Taste and quality evaluation of foods without additives exceeding regulated levels