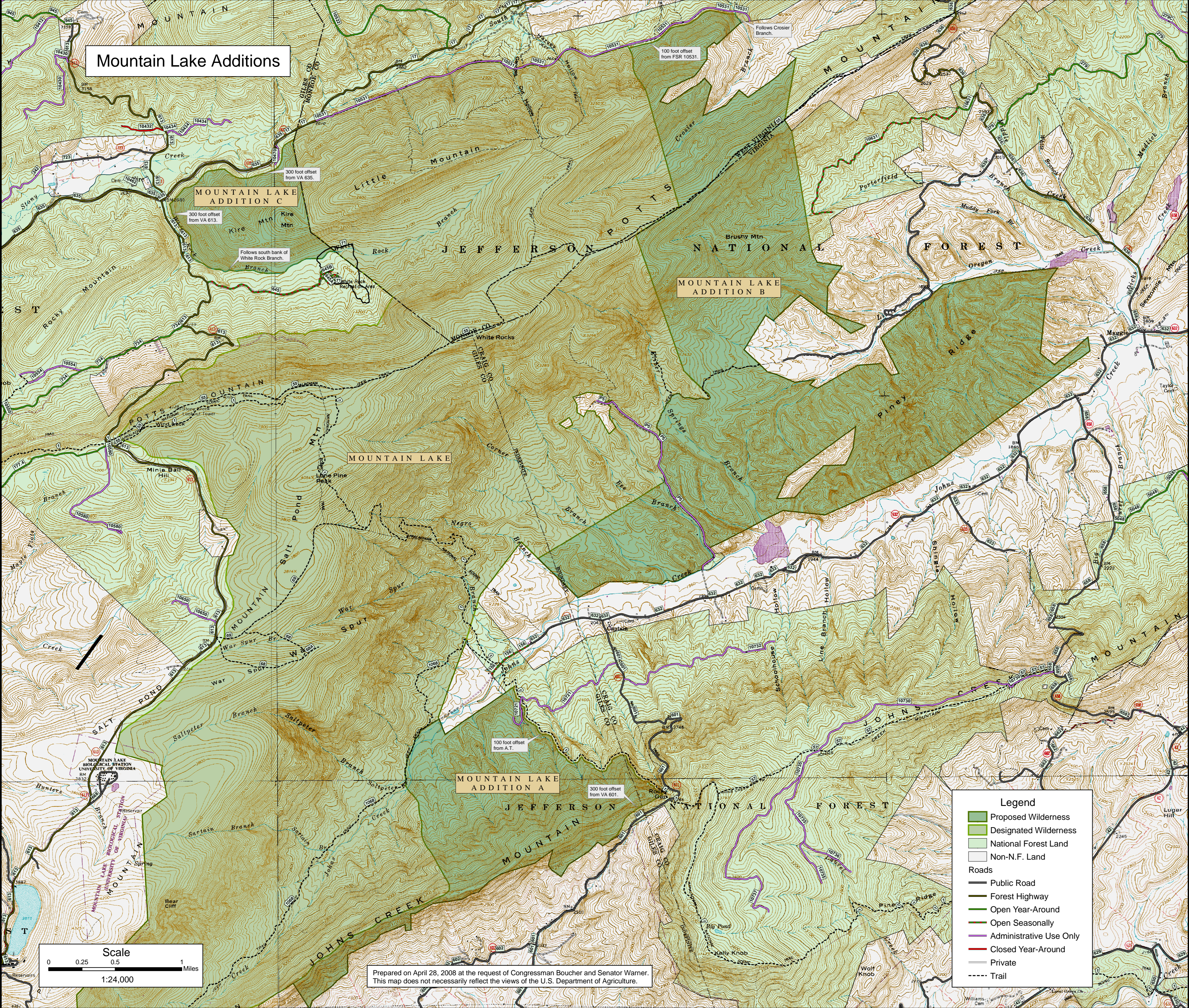


Mountain Lake Additions



MOUNTAIN LAKE ADDITION C

MOUNTAIN LAKE ADDITION B

MOUNTAIN LAKE

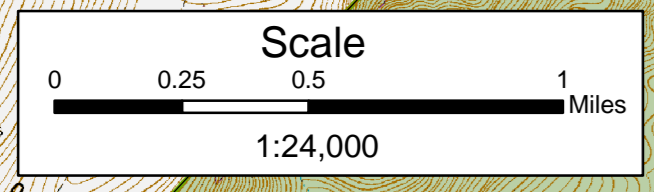
MOUNTAIN LAKE ADDITION A

Legend

- Proposed Wilderness
- Designated Wilderness
- National Forest Land
- Non-N.F. Land

Roads

- Public Road
- Forest Highway
- Open Year-Around
- Open Seasonally
- Administrative Use Only
- Closed Year-Around
- Private
- Trail



Prepared on April 28, 2008 at the request of Congressman Boucher and Senator Warner. This map does not necessarily reflect the views of the U.S. Department of Agriculture.