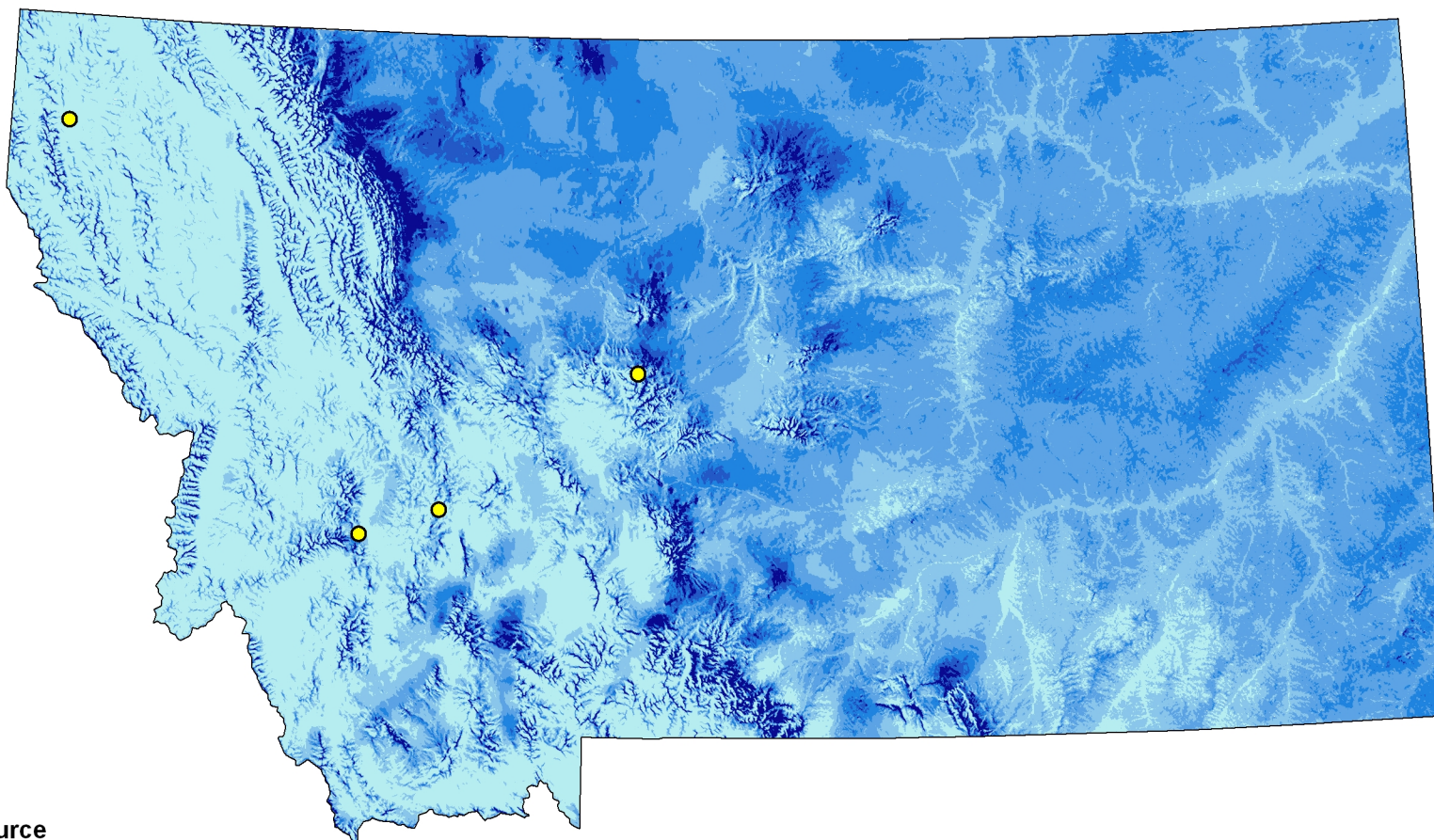


# EPA Tracked Sites in Montana with Utility Scale Wind Energy Generation Potential



## Wind Resource

Power Class	W/m <sup>2</sup>	Resource Potential
1	0-200	Poor
2	200-300	Marginal
3	300-400	Fair
4	400-500	Good
5	500-600	Excellent
6	600-800	Outstanding
7	>800	Superb

## EPA Tracked Sites

- Abandoned Mine Land
- Brownfield
- RCRA
- Federal Superfund
- Non-Federal Superfund

## Screening Criteria

- Wind power class of 4 or greater, measured at 50m above ground
- Distance to electric transmission lines of 10 miles or less
- Property size of 2,000 acres or more
- Distance to graded roads of 25 miles or less

This map was developed by SRA International for the U.S. Environmental Protection Agency (EPA) OSWER Center for Program Analysis. Results are based on site screening criteria adapted from National Renewable Energy Laboratory (NREL) criteria and GIS data provided by NREL and EPA. This map and its associated data are intended to provide a general understanding of the renewable energy potential of EPA tracked sites; additional site specific analysis is required to determine the actual energy generation potential of EPA tracked sites. For further information, please see the accompanying Data Guidelines document, or contact [cleanenergy@epa.gov](mailto:cleanenergy@epa.gov).

