

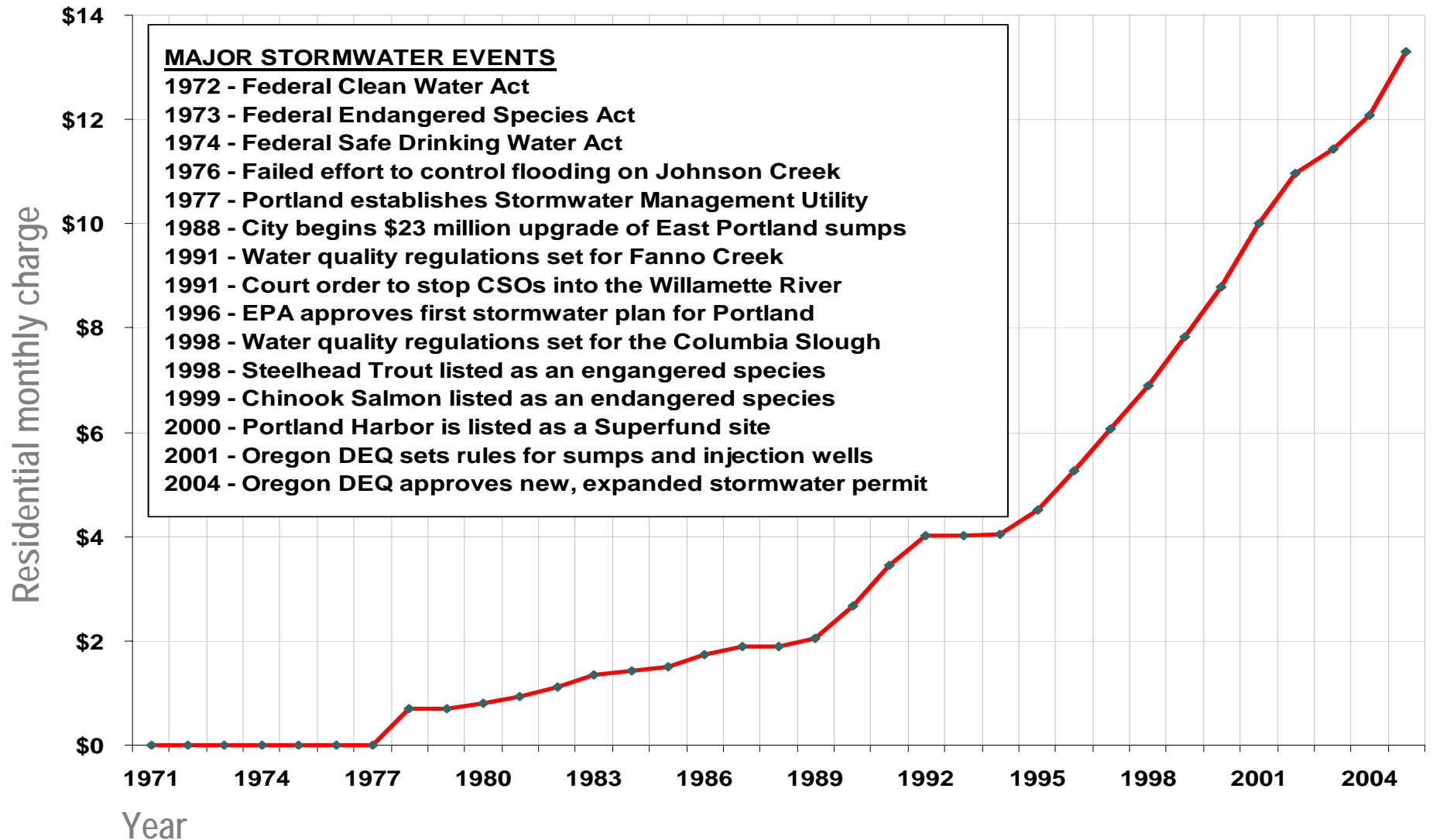
**In the past,
stormwater
management meant
managing floods and
drainage...**



...today we're required
to protect *and* improve creeks,
streams, rivers, groundwater, fish,
wildlife and prevent and clean up
toxics in the Willamette River...



This evolution has left its mark on monthly stormwater charges...

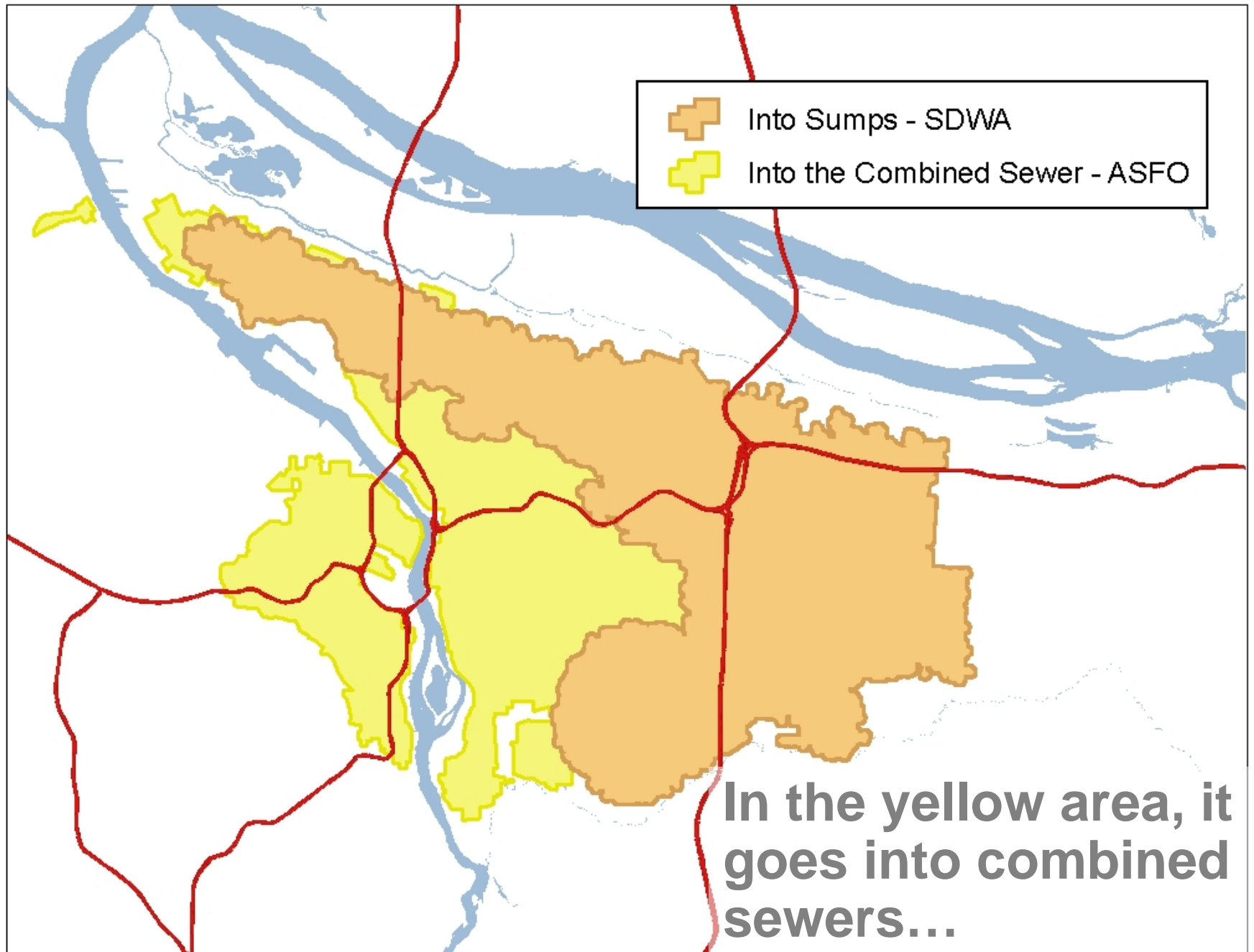


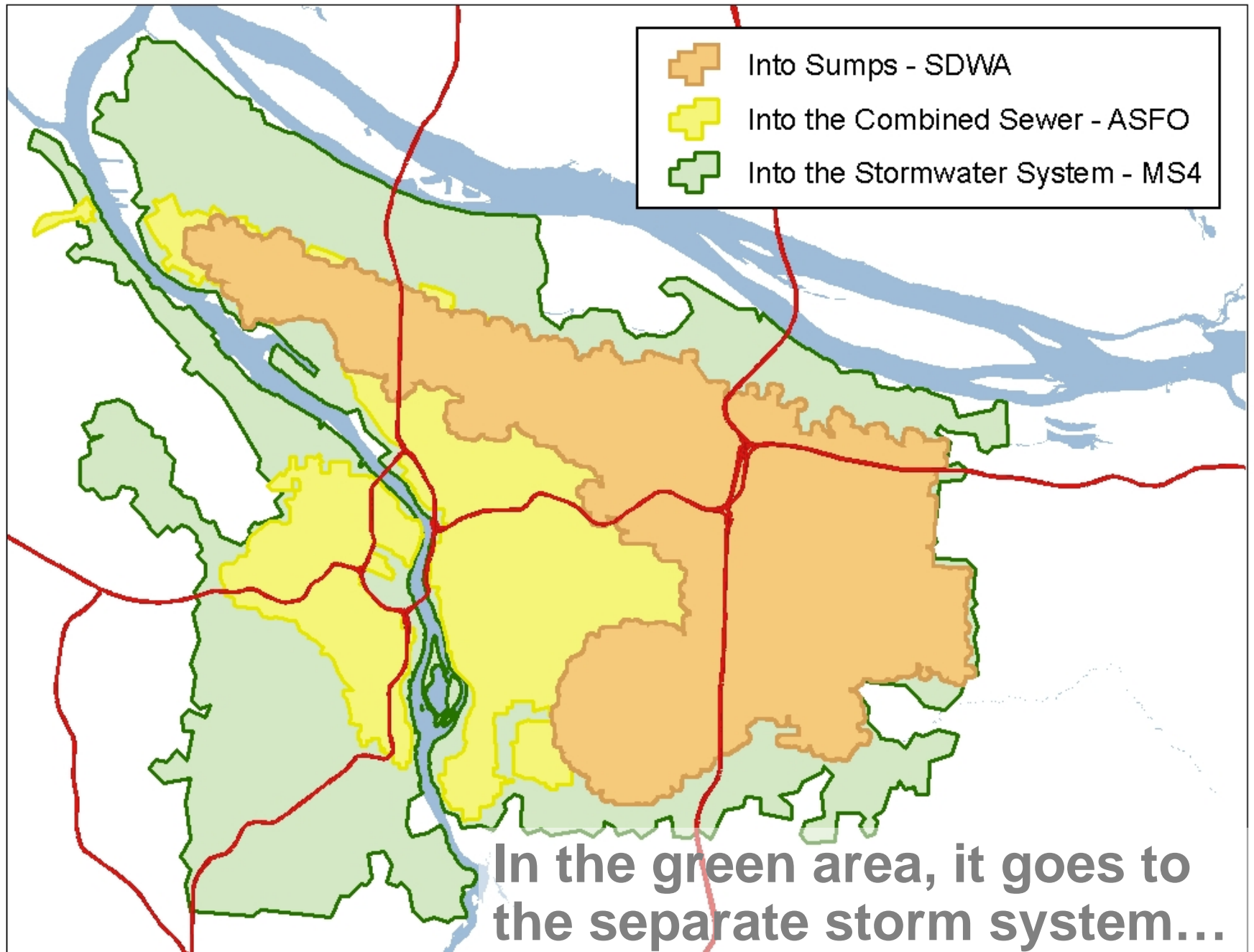
What does this mean on the ground?



Into Sumps - SDWA

**In this area, water goes
into the ground...**





Portland's challenges are not unique...

Stormwater rules, costs stumping town officials

The Times of NW Indiana – August 9, 2004

Another higher charge looms for Atlantans

Atlanta Journal-Constitution – August 6, 2004

New EPA runoff rules will hit cities, towns in 2003

The Boston Globe – July 9, 2000

DNR refuses to pay city storm water utility fees

The Capitol Times – Madison, Wisconsin – October 25, 2001

Lack of funds halts Nine Mile Run ecosystem restoration

Pittsburgh Post-Gazette – July 13, 2004

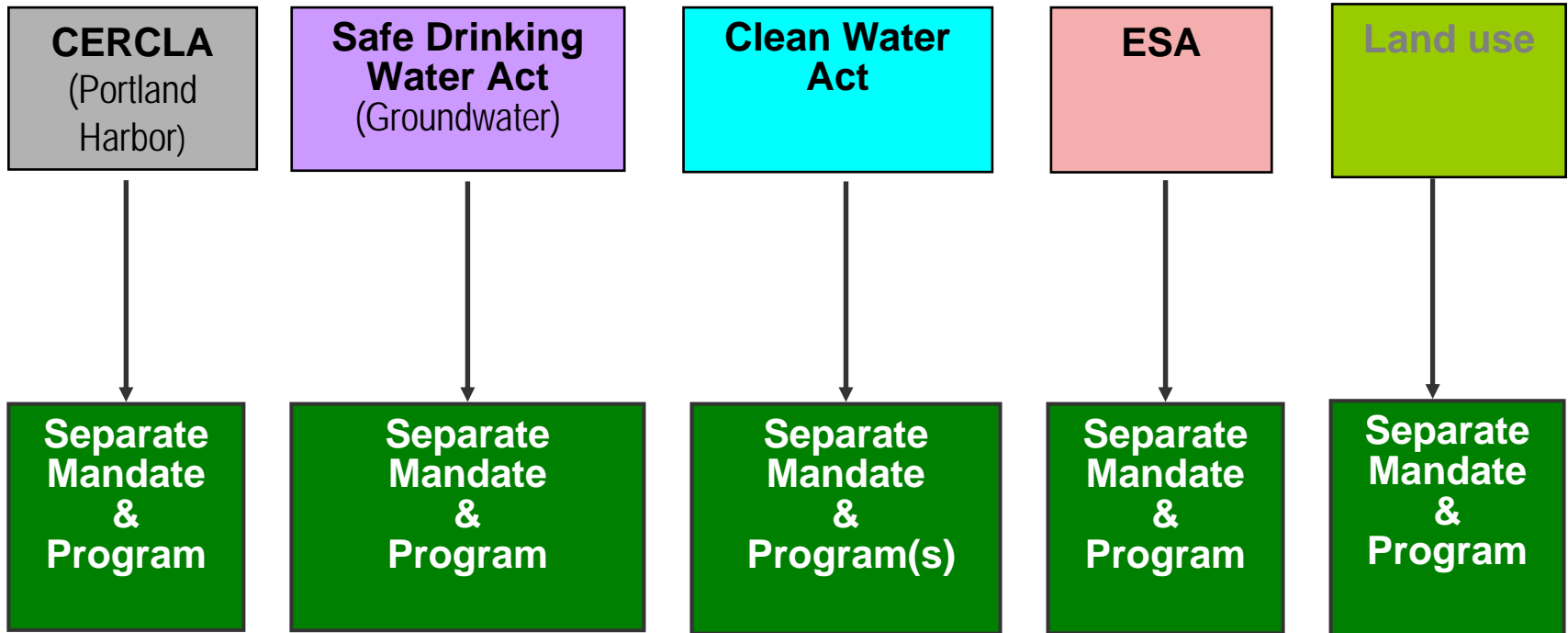
City approves cleanup funds for waterway

TRIBNET.com – Tacoma News Tribune – April 23, 2003

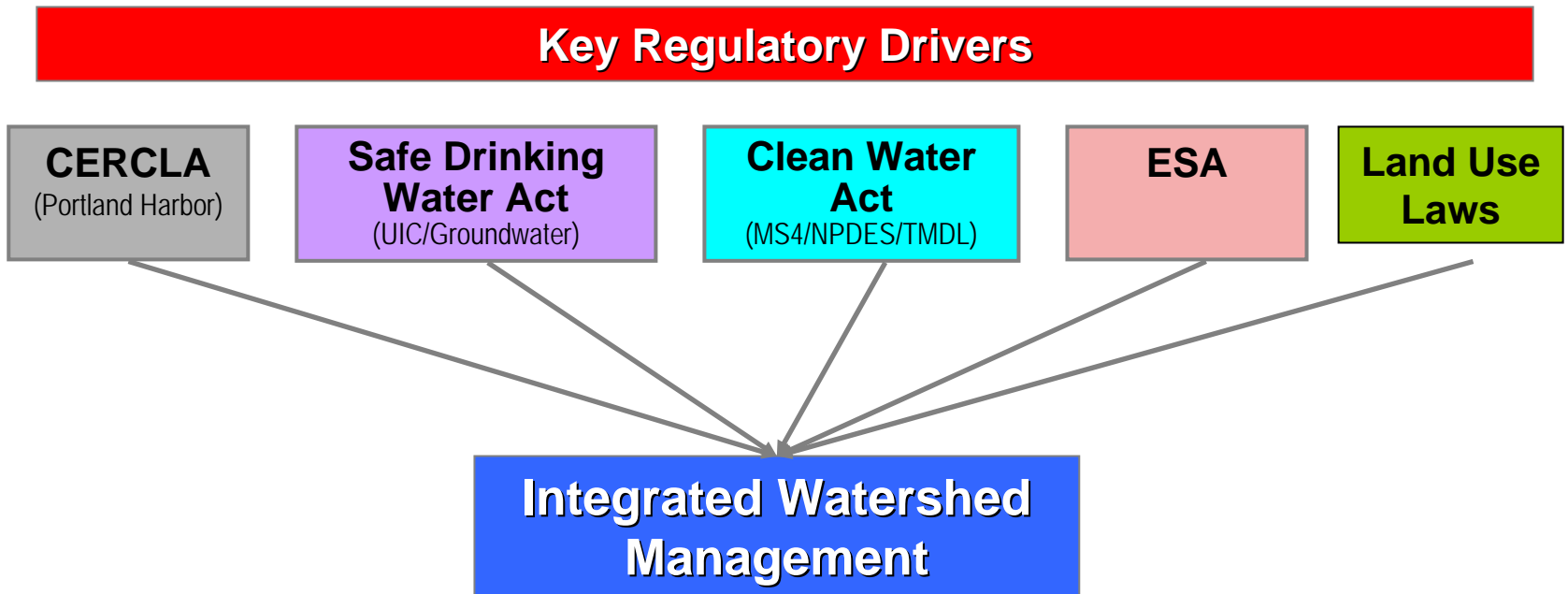
Portland's response is unique...

Traditional Approach

Key Regulatory Drivers



Integrated Approach



Examples of Watershed Management at work...

Sanitary line exposed by erosion



Cracks/joints leak sewage into creek.



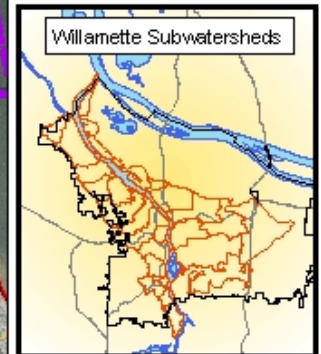
SW Texas

Stephens Subwatershed 2003 Aerial Photo

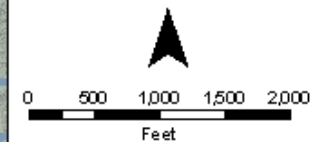
Legend

- Subwatershed Boundary
- City of Portland
- Neighborhoods
- Open Channel
- Culvert

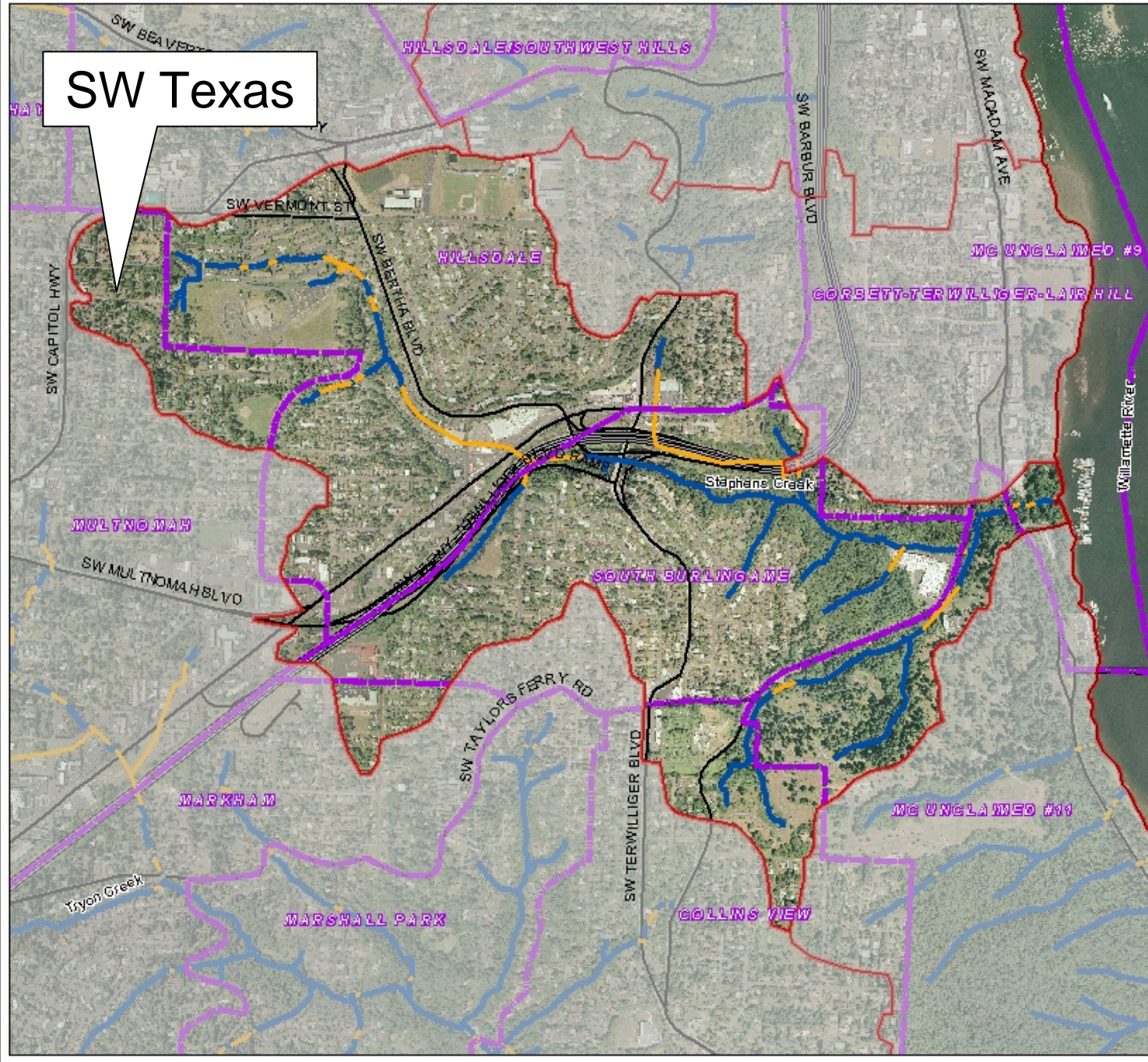
Data Sources:
Subwatersheds - BES
Streams - City of Portland,
Bureau of Planning
Neighborhoods - City of
Portland, Office of
Neighborhood Involvement
Aerials - City of Portland



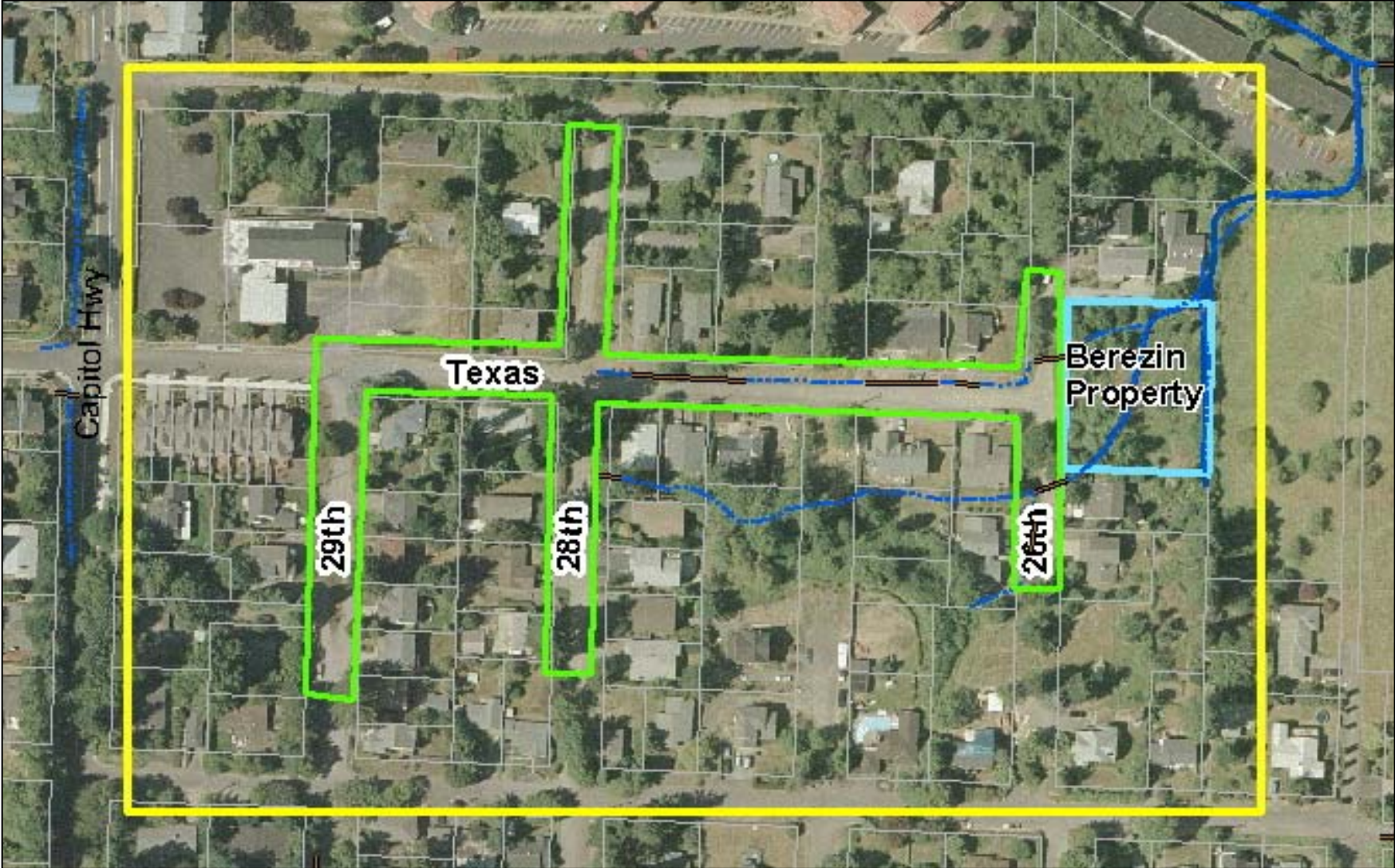
N



June, 2004



Project Area



Stephens Creek/Willamette Confluence



Oregon Department of Fish and Wildlife rated the mouth of Stephens Creek among the most valuable habitat areas in the City.

NE Siskiyou Street



Water Quality Friendly Streets that manage stormwater on the surface are becoming viable alternatives to conventional streets.

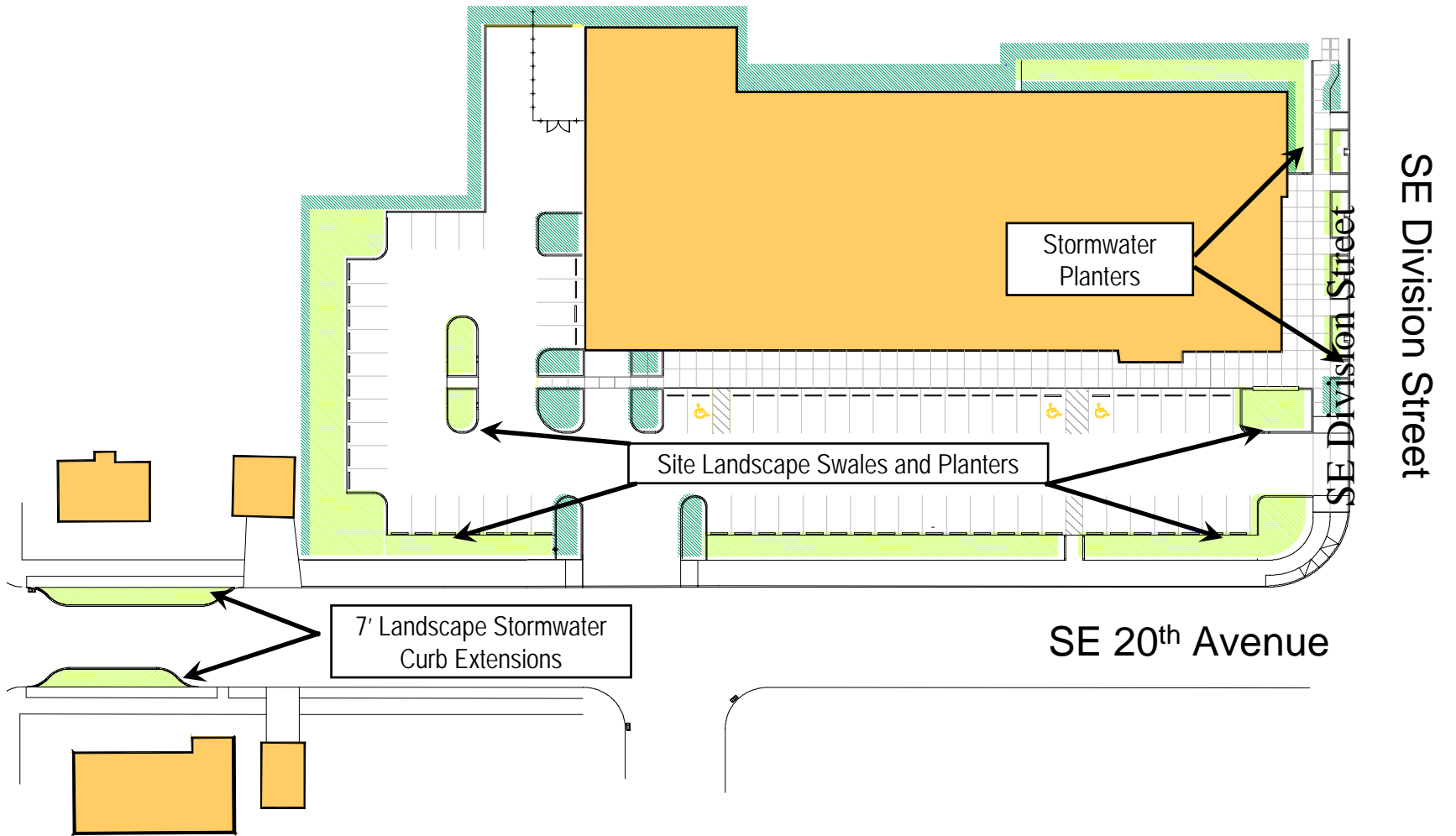
Glencoe School



South Waterfront stormwater facility



New Seasons Supermarket



SE Division Street

SE 20th Avenue

N





The Green Alley

1954

OPEN