

GEL-PERMEATION CLEANUP

1.0 SCOPE AND APPLICATION

1.1 Gel-permeation chromatography (GPC) is a size exclusion cleanup procedure using organic solvents and hydrophobic gels in the separation of synthetic macromolecules (1). The packing gel is porous and is characterized by the range or uniformity (exclusion range) of that pore size. In the choice of gels, the exclusion range must be larger than the molecular size of the molecules to be separated (2). A cross-linked divinylbenzene-styrene copolymer (SX-3 Bio Beads or equivalent) is specified for this method.

1.2 General cleanup application - GPC is recommended for the elimination from the sample of lipids, polymers, copolymers, proteins, natural resins and polymers, cellular components, viruses, steroids, and dispersed high-molecular-weight compounds (2). GPC is appropriate for both polar and non-polar analytes, therefore, it can be effectively used to cleanup extracts containing a broad range of analytes.

1.3 Specific application - This method includes guidance for cleanup of sample extracts containing the following analytes from the RCRA Appendix VIII and Appendix IX lists:

Compound Name	CAS No. ^a
Acenaphthene	83-32-9
Acenaphthylene	208-96-8
Acetophenone	98-86-2
2-Acetylaminofluorene	53-96-3
Aldrin	309-00-2
4-Aminobiphenyl	92-67-1
Aniline	62-53-3
Anthracene	120-12-7
Benomyl	17804-35-2
Benzenethiol	108-98-5
Benzidine	92-87-5
Benz(a)anthracene	56-55-3
Benzo(b)fluoranthene	205-99-2
Benzo(a)pyrene	50-32-8
Benzo(ghi)perylene	191-24-2
Benzo(k)fluoranthene	207-08-9
Benzoic acid	65-85-0
Benzotrichloride	98-07-7
Benzyl alcohol	100-51-6
Benzyl chloride	100-44-7
alpha-BHC	319-84-6
beta-BHC	319-85-7

Compound Name	CAS No. ^a
gamma-BHC	58-89-9
delta-BHC	319-86-8
4-Bromophenyl phenyl ether	101-55-3
Butyl benzyl phthalate	85-68-7
2-sec-butyl-4,6-dinitrophenol (Dinoseb)	88-85-7
Carbazole	86-74-8
Carbendazim	10605-21-7
alpha-Chlordane	5103-71-9
gamma-Chlordane	5566-34-7
4-Chloro-3-methylphenol	59-50-7
4-Chloroaniline	106-47-8
Chlorobenzilate	510-15-6
Bis(2-chloroethoxy)methane	111-91-1
Bis(2-chloroethyl) ether	111-44-4
Bis(2-chloroisopropyl) ether	108-60-1
2-Chloronaphthalene	91-58-7
2-Chlorophenol	95-57-8
4-Chlorophenol	106-48-9
3-Chlorophenol	108-43-0
4-Chlorophenyl phenyl ether	7005-72-3
3-Chloropropionitrile	542-76-7
Chrysene	218-01-9
2-Cresol	95-48-7
3-Cresol	108-39-4
4-Cresol	106-44-5
Cyclophosphamide	50-18-0
DDD	72-54-8
DDE	72-55-9
DDT	50-29-3
Di-n-butyl phthalate	84-74-2
Diallate	2303-16-4
Dibenzo(a,e)pyrene	192-65-4
Dibenzo(a,i)pyrene	189-55-9
Dibenz(a,j)acridine	224-42-0
Dibenz(a,h)anthracene	53-70-3
Dibenzofuran	132-64-9
Dibenzothiophene	132-65-0
1,2-Dibromo-3-chloropropane	96-12-8
1,2-Dibromoethane	106-93-4
trans-1,4-Dichloro-2-butene	110-57-6
cis-1,4-Dichloro-2-butene	1476-11-5
1,2-Dichlorobenzene	95-50-1
1,3-Dichlorobenzene	106-46-7
1,4-Dichlorobenzene	541-73-1
3,3'-Dichlorobenzidine	91-94-1
2,6-Dichlorophenol	87-65-0
2,4-Dichlorophenoxyacetic acid (2,4-D)	94-75-7
2,4-Dichlorophenol	120-83-2

Compound Name	CAS No. ^a
2,4-Dichlorotoluene	95-73-8
1,3-Dichloro-2-propanol	96-23-1
Dieldrin	60-57-1
Diethyl phthalate	84-66-2
Dimethoate	60-51-5
Dimethyl phthalate	131-11-3
p-Dimethylaminoazobenzene	60-11-7
7,12-Dimethyl-benz(a)anthracene	57-97-6
2,4-Dimethylphenol	105-67-9
3,3-Dimethylbenzidine	119-93-7
4,6-Dinitro-o-cresol	534-52-1
1,3-Dinitrobenzene	99-65-0
2,4-Dinitrophenol	51-28-5
2,4-Dinitrotoluene	121-14-2
2,6-Dinitrotoluene	606-20-2
Diphenylamine	122-39-4
Diphenyl ether	101-84-8
1,2-Diphenylhydrazine	122-66-7
Disulfoton	298-04-4
Endosulfan sulfate	1031-07-8
Endosulfan I	959-98-8
Endosulfan II	33213-65-9
Endrin	72-20-8
Endrin aldehyde	7421-93-4
Endrin ketone	53494-70-5
Ethyl methane sulfonate	62-50-0
Ethyl methacrylate	97-63-2
Bis(2-ethylhexyl) phthalate	117-81-7
Famphur	52-85-7
Fluorene	86-73-7
Fluoranthene	206-44-0
Heptachlor	76-44-8
Heptachlor epoxide	1024-57-3
Hexachlorobenzene	118-74-1
Hexachlorobutadiene	87-68-3
Hexachlorocyclopentadiene	77-47-4
Hexachloroethane	67-72-1
Hexachloropropene	1888-71-7
Indeno(1,2,3-cd)pyrene	193-39-5
Isodrin	465-73-6
Isophorone	78-59-1
cis-Isosafrole	17627-76-8
trans-Isosafrole	4043-71-4
Kepone	143-50-0
Malononitrile	109-77-3
Merphos	150-50-5
Methoxychlor	72-43-5
3-Methylcholanthrene	56-49-5

Compound Name	CAS No. ^a
2-Methylnaphthalene	91-57-6
Methyl parathion	298-00-0
4,4'-Methylene-bis(2-chloroaniline)	101-14-4
Naphthalene	91-20-3
1,4-Naphthoquinone	130-15-4
2-Naphthylamine	91-59-8
1-Naphthylamine	134-32-7
5-Nitro-o-toluidine	99-55-8
2-Nitroaniline	88-74-4
3-Nitroaniline	99-09-2
4-Nitroaniline	100-01-6
Nitrobenzene	98-95-3
2-Nitrophenol	79-46-9
4-Nitrophenol	100-02-7
N-Nitrosodi-n-butylamine	924-16-3
N-Nitrosodiethanolamine	1116-54-7
N-Nitrosodiethylamine	55-18-5
N-Nitrosodimethylamine	62-75-9
N-Nitrosodiphenylamine	86-30-6
N-Nitrosodi-n-propylamine	621-64-7
N-Nitrosomethylethylamine	10595-95-6
N-Nitrosomorpholine	59-89-2
N-Nitrosopiperidine	100-75-4
N-Nitrosopyrolidine	930-55-2
Di-n-octyl phthalate	117-84-0
Parathion	56-38-2
Pentachlorobenzene	608-93-5
Pentachloroethane	76-01-7
Pentachloronitrobenzene (PCNB)	82-68-8
Pentachlorophenol	87-86-5
Phenacetin	62-44-2
Phenanthrene	85-01-8
Phenol	108-95-2
1,2-Phenylenediamine	95-54-5
Phorate	298-02-2
2-Picoline	109-06-8
Pronamide	23950-58-5
Pyrene	129-00-0
Resorcinol	108-46-3
Safrole	94-59-7
1,2,4,5-Tetrachlorobenzene	95-94-3
2,3,5,6-Tetrachloronitrobenzene	117-18-0
2,3,5,6-Tetrachlorophenol	935-95-5
2,3,4,6-Tetrachlorophenol	58-90-2
Tetraethyl dithiopyrophosphate (Sulfotep)	3689-24-5
Thiosemicarbazide	79-19-6
2-Toluidine	106-49-0
4-Toluidine	95-53-4

Compound Name	CAS No. ^a
Thiourea, 1-(o-chlorophenyl)	5344-82-1
Toluene-2,4-diamine	95-80-7
1,2,3-Trichlorobenzene	87-61-6
1,2,4-Trichlorobenzene	120-82-1
2,4,6-Trichlorophenol	88-06-2
2,4,5-Trichlorophenol	95-95-4
2,4,5-Trichlorophenoxyacetic acid (2,4,5-T)	93-76-5
2,4,5-Trichlorophenoxypropionic acid (2,4,5-TP)	93-72-1
Warfarin	81-81-2

^a Chemical Abstract Services Registry Number.

Table 1 presents average percent recovery and percent RSD data for these analytes, as well as the retention volumes of each analyte on a single GPC system. Retention volumes vary from column to column. Figure 1 provides additional information on retention volumes for certain classes of compounds. The data for the semivolatiles were determined by GC/MS, whereas, the pesticide data were determined by GC/ECD or GC/FPD. Compounds not amenable to GC were determined by HPLC. Other analytes may also be appropriate for this cleanup technique, however, recovery through the GPC should be >70%.

1.4 Normally, this method is most efficient for removing high boiling materials that condense in the injection port area of a gas chromatograph (GC) or the front of the GC column. This residue will ultimately reduce the chromatographic separation efficiency or column capacity because of adsorption of the target analytes on the active sites. Pentachlorophenol is especially susceptible to this problem. GPC, operating on the principal of size exclusion, will not usually remove interference peaks that appear in the chromatogram since the molecular size of these compounds is relative similar to the target analytes. Separation cleanup techniques, based on other molecular characteristics (i.e., polarity), must be used to eliminate this type of interference.

2.0 SUMMARY OF METHOD

2.1 The column is packed with the required amount of preswelled absorbent, and is flushed with solvent for an extended period. The column is calibrated and then loaded with the sample extract to be cleaned up. Elution is effected with a suitable solvent(s) and the product is then concentrated.

3.0 INTERFERENCES

3.1 A reagent blank should be analyzed for the compound of interest prior to the use of this method. The level of interferences must be below the estimated quantitation limits (EQLs) of the analytes of interest before this method is performed on actual samples.

3.2 More extensive procedures than those outlined in this method may be necessary for reagent purification.

4.0 APPARATUS

4.1 Gel-permeation chromatography system - GPC Autoprep Model 1002 A or B, or equivalent, Analytical Biochemical Laboratories, Inc. Systems that perform very satisfactorily have also been assembled from the following components - an HPLC pump, an auto sampler or a valving system with sample loops, and a fraction collector. All systems, whether automated or manual, must meet the calibration requirements of Sec. 7.2.2.

4.1.1 Chromatographic column - 700 mm x 25 mm ID glass column. Flow is upward. (Optional) To simplify switching from the UV detector during calibration to the GPC collection device during extract cleanup, attach a double 3-way valve (Rheodyne Type 50 Teflon Rotary Valve #10-262 or equivalent) so that the column exit flow can be shunted either to the UV flow-through cell or to the GPC collection device.

4.1.2 Guard column - (Optional) 5 cm, with appropriate fittings to connect to the inlet side of the analytical column (Supelco 5-8319 or equivalent).

4.1.3 Bio Beads (S-X3) - 200-400 mesh, 70 g (Bio-Rad Laboratories, Richmond, CA, Catalog 152-2750 or equivalent). An additional 5 g of Bio Beads are required if the optional guard column is employed. The quality of Bio Beads may vary from lot to lot because of excessive fines in some lots. The UV chromatogram of the Calibration solution should be very similar to that in Figure 2, and the backpressure should be within 6-10 psi. Also, the gel swell ratio in methylene chloride should be in the range of 4.4 - 4.8 mL/g. In addition to fines having a detrimental effect on chromatography, they can also pass through the column screens and damage the valve.

4.1.4 Ultraviolet detector - Fixed wavelength (254 nm) with a semi-prep flow-through cell.

4.1.5 Strip chart recorder, recording integrator or laboratory data system.

4.1.6 Syringe - 10 mL with Luerlok fitting.

4.1.7 Syringe filter assembly, disposable - Bio-Rad "Prep Disc" sample filter assembly #343-0005, 25 mm, and 5 micron filter discs or equivalent. Check each batch for contaminants. Rinse each filter assembly (prior to use) with methylene chloride if necessary.

4.2 Analytical balance - 0.0001 g.

4.3 Volumetric flasks, Class A - 10 mL to 1000 mL

4.4 Graduated cylinders

5.0 REAGENTS

5.1 Methylene chloride, CH_2Cl_2 . Pesticide quality or equivalent.

5.1.1 Some brands of methylene chloride may contain unacceptably high levels of acid (HCl). Check the pH by shaking equal portions of methylene chloride and water, then check the pH of the water layer.

5.1.1.1 If the pH of the water layer is ≤ 5 , filter the entire supply of solvent through a 2 in. x 15 in. glass column containing activated basic alumina. This column should be sufficient for processing approximately 20-30 liters of solvent. Alternatively, find a different supply of methylene chloride.

5.2 Cyclohexane, C_6H_{12} . Pesticide quality or equivalent.

5.3 n-Butyl chloride, $\text{CH}_3\text{CH}_2\text{CH}_2\text{CH}_2\text{Cl}$. Pesticide quality or equivalent.

5.4 GPC Calibration Solution. Prepare a calibration solution in methylene chloride containing the following analytes (in elution order):

<u>Compound</u>	<u>mg/L</u>
corn oil	25,000
bis(2-ethylhexyl) phthalate	1,000
methoxychlor	200
perylene	20
sulfur	80

NOTE: Sulfur is not very soluble in methylene chloride, however, it is soluble in warm corn oil. Therefore, one approach is to weigh out the corn oil, warm it and transfer the weighed amount of sulfur into the warm corn oil. Mix it and then transfer into a volumetric flask with methylene chloride, along with the other calibration compounds.

Store the calibration solution in an amber glass bottle with a Teflon lined screw-cap at 4°C, and protect from light. (Refrigeration may cause the corn oil to precipitate. Before use, allow the calibration solution to stand at room temperature until the corn oil dissolves.) Replace the calibration standard solution every 6 months, or more frequently if necessary.

5.5 Corn Oil Spike for Gravimetric Screen. Prepare a solution of corn oil in methylene chloride (5 g/100 mL).

6.0 SAMPLE COLLECTION, PRESERVATION, AND HANDLING

6.1 See the introductory material to this chapter, Organic Analytes, Sec. 4.1.

7.0 PROCEDURE

7.1 It is very important to have consistent laboratory temperatures during an entire GPC run, which could be 24 hours or more. If temperatures are not consistent, retention times will shift, and the dump and collect times determined by the calibration standard will no longer be appropriate. The ideal laboratory temperature to prevent outgassing of the methylene chloride is 72°F.

7.2 GPC Setup and Calibration

7.2.1 Column Preparation

7.2.1.1 Weigh out 70 g of Bio Beads (SX-3). Transfer them to a quart bottle with a Teflon lined cap or a 500 mL separatory funnel with a large bore stopcock, and add approximately 300 mL of methylene chloride. Swirl the container to ensure the wetting of all beads. Allow the beads to swell for a minimum of 2 hours. Maintain enough solvent to sufficiently cover the beads at all times. If a guard column is to be used, repeat the above with 5 g of Bio Beads in a 125 mL bottle or a beaker, using 25 mL of methylene chloride.

7.2.1.2 Turn the column upside down from its normal position, and remove the inlet bed support plunger (the inlet plunger is longer than the outlet plunger). Position and tighten the outlet bed support plunger as near the end as possible, but no closer than 5 cm (measured from the gel packing to the collar).

7.2.1.3 Raise the end of the outlet tube to keep the solvent in the GPC column, or close the column outlet stopcock if one is attached. Place a small amount of solvent in the column to minimize the formation of air bubbles at the base of poured column packing.

7.2.1.4 Swirl the bead/solvent slurry to get a homogeneous mixture and, if the wetting was done in a quart bottle, quickly transfer it to a 500 mL separatory funnel with a large bore stopcock. Drain the excess methylene chloride directly into the waste beaker, and then start draining the slurry into the column by placing the separatory funnel tip against the column wall. This will help to minimize bubble formation. Swirl occasionally to keep the slurry homogeneous. Drain enough to fill the column. Place the tubing from the column outlet into a waste beaker below the column, open the stopcock (if attached) and allow the excess solvent to drain. Raise the tube to stop the flow and close the stopcock when the top of the gel begins to look dry. Add additional methylene chloride to just rewet the gel.

7.2.1.5 Wipe any remaining beads and solvent from the inner walls of the top of the column with a laboratory tissue. Loosen the seal slightly on the other plunger assembly (long plunger) and insert it into the column. Make the seal just tight

enough so that any beads on the glass surface will be pushed forward, but loose enough so that the plunger can be pushed forward.

CAUTION: Do not tighten the seal if beads are between the seal and the glass surface because this can damage the seal and cause leakage.

7.2.1.6 Compress the column as much as possible without applying excessive force. Loosen the seal and gradually pull out the plunger. Rinse and wipe off the plunger. Slurry any remaining beads and transfer them into the column. Repeat Sec. 7.2.1.5 and reinsert the plunger. If the plunger cannot be inserted and pushed in without allowing beads to escape around the seal, continue compression of the beads without tightening the seal, and loosen and remove the plunger as described. Repeat this procedure until the plunger is successfully inserted.

7.2.1.7 Push the plunger until it meets the gel, then compress the column bed about four centimeters.

7.2.1.8 Pack the optional 5 cm column with approximately 5 g of preswelled beads (different guard columns may require different amounts). Connect the guard column to the inlet of the analytical column.

7.2.1.9 Connect the column inlet to the solvent reservoir (reservoir should be placed higher than the top of the column) and place the column outlet tube in a waste container. Placing a restrictor in the outlet tube will force air out of the column more quickly. A restrictor can be made from a piece of capillary stainless steel tubing of 1/16" OD x 10/1000" ID x 2". Pump methylene chloride through the column at a rate of 5 mL/min for one hour.

7.2.1.10 After washing the column for at least one hour, connect the column outlet tube, without the restrictor, to the inlet side of the UV detector. Connect the system outlet to the outlet side of the UV detector. A restrictor (same size as in Sec. 7.2.1.9) in the outlet tube from the UV detector will prevent bubble formation which causes a noisy UV baseline. The restrictor will not effect flow rate. After pumping methylene chloride through the column for an additional 1-2 hours, adjust the inlet bed support plunger until approximately 6-10 psi backpressure is achieved. Push the plunger in to increase pressure or slowly pull outward to reduce pressure.

7.2.1.11 When the GPC column is not to be used for several days, connect the column outlet line to the column inlet to prevent column drying and/or channeling. If channeling occurs, the gel must be removed from the column, reswelled, and repoured as described above. If drying occurs, methylene chloride should be pumped through the column until the observed column pressure is constant

and the column appears wet. Always recalibrate after column drying has occurred to verify retention volumes have not changed.

7.2.2 Calibration of the GPC Column

7.2.2.1 Using a 10 mL syringe, load sample loop #1 with calibration solution (Sec. 5.6). With the ABC automated system, the 5 mL sample loop requires a minimum of 8 mL of the calibration solution. Use a firm, continuous pressure to push the sample onto the loop. Switch the valve so that GPC flow is through the UV flow-through cell.

7.2.2.2 Inject the calibration solution and obtain a UV trace showing a discrete peak for each component. Adjust the detector and/or recorder sensitivity to produce a UV trace similar to Figure 2 that meets the following requirements. Differences between manufacturers' cell volumes and detector sensitivities may require a dilution of the calibration solution to achieve similar results. An analytical flow-through detector cell will require a much less concentrated solution than the semi-prep cell, and therefore the analytical cell is not acceptable for use.

7.2.2.3 Following are criteria for evaluating the UV chromatogram for column condition.

7.2.2.3.1 Peaks must be observed, and should be symmetrical, for all compounds in the calibration solution.

7.2.2.3.2 Corn oil and phthalate peaks must exhibit >85% resolution.

7.2.2.3.3 Phthalate and methoxychlor peaks must exhibit >85% resolution.

7.2.2.3.4 Methoxychlor and perylene peaks must exhibit >85% resolution.

7.2.2.3.5 Perylene and sulfur peaks must not be saturated and must exhibit >90% baseline resolution.

7.2.2.3.6 Nitroaromatic compounds are particularly prone to adsorption. For example, 4-nitrophenol recoveries may be low due to a portion of the analyte being discarded after the end of the collection time. Columns should be tested with the semivolatiles matrix spiking solution. GPC elution should continue until after perylene has eluted, or long enough to recover at least 85% of the analytes, whichever time is longer.

7.2.2.4 Calibration for Semivolatiles - Using the information from the UV trace, establish appropriate collect and dump time periods to ensure collection of all target analytes. Initiate column eluate collection just before elution of

bis(2-ethylhexyl) phthalate and after the elution of the corn oil. Stop eluate collection shortly after the elution of perylene. Collection should be stopped before sulfur elutes. Use a "wash" time of 10 minutes after the elution of sulfur. Each laboratory is required to establish its specific time sequences. See Figure 2 for general guidance on retention time. Figure 1 illustrates retention volumes for different classes of compounds.

7.2.2.5 Calibration for Organochlorine Pesticides/PCBs - Determine the elution times for the phthalate, methoxychlor, perylene, and sulfur. Choose a dump time which removes >85% of the phthalate, but collects >95% of the methoxychlor. Stop collection after the elution of perylene, but before sulfur elutes.

7.2.2.6 Verify the flow rate by collecting column eluate for 10 minutes in a graduated cylinder and measure the volume, which should be 45-55 mL (4.5-5.5 mL/min). If the flow rate is outside of this range, corrective action must be taken, as described above. Once the flow rate is within the range of 4.5-5.5 mL/min, record the column pressure (should be 6-10 psi) and room temperature. Changes in pressure, solvent flow rate, and temperature conditions can affect analyte retention times, and must be monitored. If the flow rate and/or column pressure do not fall within the above ranges, a new column should be prepared. A UV trace that does not meet the criteria in Sec. 7.2.2.3 would also indicate that a new column should be prepared. It may be necessary to obtain a new lot of Bio Beads if the column fails all the criteria.

7.2.2.7 Reinject the calibration solution after appropriate collect and dump cycles have been set, and the solvent flow and column pressure have been established.

7.2.2.7.1 Measure and record the volume of collected GPC eluate in a graduated cylinder. The volume of GPC eluate collected for each sample extract processed may be used to indicate problems with the system during sample processing.

7.2.2.7.2 The retention times for bis(2-ethylhexyl) phthalate and perylene must not vary more than $\pm 5\%$ between calibrations. If the retention time shift is >5%, take corrective action. Excessive retention time shifts are caused by:

7.2.2.7.2.1 Poor laboratory temperature control or system leaks.

7.2.2.7.2.2 An unstabilized column that requires pumping methylene chloride through it for several more hours or overnight.

7.2.2.7.2.3 Excessive laboratory temperatures, causing outgassing of the methylene chloride.

7.2.2.8 Analyze a GPC blank by loading 5 mL of methylene chloride into the GPC. Concentrate the methylene chloride that passes through the system during the collect cycle using a Kuderna-Danish (KD) evaporator. Analyze the concentrate by whatever detectors will be used for the analysis of future samples. Exchange the solvent, if necessary. If the blank exceeds the estimated quantitation limit of the analytes, pump additional methylene chloride through the system for 1-2 hours. Analyze another GPC blank to ensure the system is sufficiently clean. Repeat the methylene chloride pumping, if necessary.

7.3 Extract Preparation

7.3.1 Adjust the extract volume to 10.0 mL. The solvent extract must be primarily methylene chloride. All other solvents, e.g. 1:1 methylene chloride/acetone, must be concentrated to 1 mL (or as low as possible if a precipitate forms) and diluted to 10.0 mL with methylene chloride. Thoroughly mix the extract before proceeding.

7.3.2 Filter the extract through a 5 micron filter disc by attaching a syringe filter assembly containing the filter disc to a 10 mL syringe. Draw the sample extract through the filter assembly and into the 10 mL syringe. Disconnect the filter assembly before transferring the sample extract into a small glass container, e.g. a 15 mL culture tube with a Teflon lined screw cap. Alternatively, draw the extract into the syringe without the filter assembly. Attach the filter assembly and force the extract through the filter and into the glass container. The latter is the preferred technique for viscous extracts or extracts with a lot of solids. Particulate larger than 5 microns may scratch the valve, which may result in a system leak and cross-contamination of sample extracts in the sample loops. Repair of the damaged valve is quite expensive.

NOTE: Viscosity of a sample extract should not exceed the viscosity of 1:1 water/glycerol. Dilute samples that exceed this viscosity.

7.4 Screening the Extract

7.4.1 Screen the extract to determine the weight of dissolved residue by evaporating a 100 μ L aliquot to dryness and weighing the residue. The weight of dissolved residue loaded on the GPC column cannot exceed 0.500 g. Residues exceeding 0.500 g will very likely result in incomplete extract cleanup and contamination of the GPC switching valve (which results in cross-contamination of sample extracts).

7.4.1.1 Transfer 100 μ L of the filtered extract from Sec. 7.3.2 to a tared aluminum weighing dish.

7.4.1.2 A suggested evaporation technique is to use a heat lamp. Set up a 250 watt heat lamp in a hood so that it is 8 ± 0.5 cm from a surface covered with a clean sheet of aluminum foil. Surface temperature should be 80-100°C (check temperature by placing a thermometer on the foil and under the lamp). Place the

weighing dish under the lamp using tongs. Allow it to stay under the lamp for 1 min. Transfer the weighing dish to an analytical balance or a micro balance and weigh to the nearest 0.1 mg. If the residue weight is less than 10 mg/100 µL, then further weighings are not necessary. If the residue weight is greater than 10 mg/100 µL, then determine if constant weight has been achieved by placing the weighing dish and residue back under the heat lamp for 2 or more additional 0.5 min. intervals. Reweigh after each interval. Constant weight is achieved when three weights agree within ±10%.

7.4.1.3 Repeat the above residue analysis on a blank and a spike. Add 100 µL of the same methylene chloride used for the sample extraction to a weighing dish and determine residue as above. Add 100 µL of a corn oil spike (5 g/100 mL) to another weighing dish and repeat the residue determination.

7.4.2 A residue weight of 10 mg/100 µL of extract represents 500 mg in 5 mL of extract. Any sample extracts that exceed the 10 mg/100 µL residue weight must be diluted so that the 5 mL loaded on the GPC column does not exceed 0.500 g. When making the dilution, keep in mind that a minimum volume of 8 mL is required when loading the ABC GPC unit. Following is a calculation that may be used to determine what dilution is necessary if the residue exceeds 10 mg.

$$\begin{array}{rcl} Y \text{ mL taken} & = & 10 \text{ mL final} \quad \times \quad \frac{10 \text{ mg maximum}}{X \text{ mg of residue}} \\ \text{for dilution} & & \text{volume} \end{array}$$

Example:

$$\begin{array}{rcl} Y \text{ mL taken} & = & 10 \text{ mL final} \quad \times \quad \frac{10 \text{ mg maximum}}{15 \text{ mg of residue}} \\ \text{for dilution} & & \text{volume} \end{array}$$

$$Y \text{ mL taken for dilution} = 6.7 \text{ mL}$$

Therefore, taking 6.7 mL of sample extract from Sec. 7.3.2, and diluting to 10 mL with methylene chloride, will result in 5 mL of diluted extract loaded on the GPC column that contains 0.500 g of residue.

NOTE: This dilution factor must be included in the final calculation of analyte concentrations. In the above example, the dilution factor is 1.5.

7.5 GPC Cleanup

7.5.1 Calibrate the GPC at least once per week following the procedure outlined in Secs. 7.2.2 through 7.2.2.6. Ensure that UV trace requirements, flow rate and column pressure criteria are acceptable. Also, the retention time shift must be <5% when compared to retention times in the last calibration UV trace.

7.5.1.1 If these criteria are not met, try cleaning the column by loading one or more 5 mL portions of butyl chloride and running it through the column. Butyl chloride or 9:1 (v/v)

methylene chloride/methanol removes the discoloration and particulate that may have precipitated out of the methylene chloride extracts. Backflushing (reverse flow) with methylene chloride to dislodge particulates may restore lost resolution. If a guard column is being used, replace it with a new one. This may correct the problem. If column maintenance does not restore acceptable performance, the column must be repacked with new Bio Beads and calibrated.

7.5.2 Draw a minimum of 8 mL of extract (diluted, if necessary, and filtered) into a 10 mL syringe.

7.5.3 Attach the syringe to the turn lock on the injection port. Use firm, continuous pressure to push the sample onto the 5-mL sample loop. If the sample is difficult to load, some part of the system may be blocked. Take appropriate corrective action. If the back pressure is normal (6-10 psi), the blockage is probably in the valve. Blockage may be flushed out of the valve by reversing the inlet and outlet tubes and pumping solvent through the tubes. (This should be done before sample loading.)

NOTE: Approximately 2 mL of the extract remains in the lines between the injection port and the sample loop; excess sample also passes through the sample loop to waste.

7.5.4 After loading a loop, and before removing the syringe from the injection port, index the GPC to the next loop. This will prevent loss of sample caused by unequal pressure in the loops.

7.5.5 After loading each sample loop, wash the loading port with methylene chloride in a PTFE wash bottle to minimize cross-contamination. Inject approximately 10 mL of methylene chloride to rinse the common tubes.

7.5.6 After loading all the sample loops, index the GPC to the 00 position, switch to the "RUN" mode and start the automated sequence. Process each sample using the collect and dump cycle times established in Sec. 7.2.2.

7.5.7 Collect each sample in a 250 mL Erlenmeyer flask, covered with aluminum foil to reduce solvent evaporation, or directly into a Kuderna-Danish evaporator. Monitor sample volumes collected. Changes in sample volumes collected may indicate one or more of the following problems:

7.5.7.1 Change in solvent flow rate, caused by channeling in the column or changes in column pressure.

7.5.7.2 Increase in column operating pressure due to the absorption of particles or gel fines onto either the guard column or the analytical column gel, if a guard column is not used.

7.5.7.3 Leaks in the system or significant variances in room temperature.

7.6 Concentrate the extract by the standard K-D technique (see any of the extraction methods, Sec. 4.2.1 of this chapter). See the determinative methods (Chapter Four, Sec. 4.3) for the final volume.

7.7 It should be remembered that only half of the sample extract is processed by the GPC (5 mL of the 10 mL extract is loaded onto the GPC column), and thus, a dilution factor of 2 (or 2 multiplied by any dilution factor in Sec. 7.4.2) must be used for quantitation of the sample in the determinative method.

8.0 QUALITY CONTROL

8.1 Refer to Chapter One and Method 3600 for specific quality control procedures.

8.2 The analyst should demonstrate that the compound(s) of interest are being quantitatively recovered before applying this method to actual samples.

8.3 For sample extracts that are cleaned up using this method, the associated quality control samples must also be processed through this cleanup method.

9.0 METHOD PERFORMANCE

9.1 Refer to Table 1 for single laboratory performance data.

10.0 REFERENCES

1. Wise, R.H.; Bishop, D.F.; Williams, R.T.; Austern, B.M. "Gel Permeation Chromatography in the GC/MS Analysis of Organics in Sludges"; U.S. EPA Municipal Environmental Research Laboratory: Cincinnati, Ohio 45268.
2. Czuczwa, J.; Alford-Stevens, A. "Optimized Gel Permeation Chromatographic Cleanup for Soil, Sediment, Waste and Waste Oil Sample Extracts for GC/MS Determination of Semivolatile Organic Pollutants, JA0AC, submitted April 1989.
3. Marsden, P.J.; Taylor, V.; Kennedy, M.R. "Evaluation of Method 3640 Gel Permeation Cleanup"; Contract No. 68-03-3375, U.S. Environmental Protection Agency, Cincinnati, Ohio, pp. 100, 1987.

TABLE 1
GPC RECOVERY AND RETENTION VOLUMES FOR RCRA
APPENDIX VIII ANALYTES

Compound	% Rec ¹	% RSD ²	Ret. Vol. ³ (mL)
Acenaphthene	97	2	196-235
Acenaphthylene	72	10	196-235
Acetophenone	94	7	176-215
2-Acetylaminofluorene	97	2	156-195
Aldrin	99	9	196-215
4-Aminobiphenyl	96	7	176-215
Aniline	93	4	196-235
Anthracene	89	2	196-235
Benomyl	131	8	146-195
Benzenethiol	92	11	196-235
Benzidine	95	5	176-215
Benz(a)anthracene	100	3	196-235
Benzo(b)fluoranthene	93	5	196-235
Benzo(a)pyrene	93	3	196-235
Benzo(ghi)perylene	90	6	196-235
Benzo(k)fluoranthene	91	4	196-235
Benzoic acid	66	7	176-195
Benzotrichloride	93	7	176-215
Benzyl alcohol	95	17	176-215
Benzyl chloride	99	4	176-215
alpha-BHC	84	13	196-215
beta-BHC	94	9	196-215
gamma-BHC	93	4	196-215
delta-BHC	102	7	216-255
4-Bromophenyl phenyl ether	93	1	176-215
Butyl benzyl phthalate	104	3	136-175
2-sec-butyl-4,6-dinitrophenol (Dinoseb)	103	18	176-195
Carbazole	99	5	196-255
Carbendazim	131	8	146-195
alpha-Chlordane	97	2	196-235
gamma-Chlordane	93	2	196-215
4-Chloro-3-methylphenol	87	1	196-255
4-Chloroaniline	88	3	196-235
Chlorobenzilate	92	5	176-235
Bis(2-chloroethoxy)methane	89	1	156-195
Bis(2-chloroethyl) ether	76	2	156-215
Bis(2-chloroisopropyl) ether	83	2	156-195
2-Chloronaphthalene	89	1	196-235
2-Chlorophenol	90	1	196-215
3-Chlorophenol	86	3	196-215
4-Chlorophenol	87	2	196-215
4-Chlorophenyl phenyl ether	98	2	176-215
3-Chloropropionitrile	80	5	176-215
Chrysene	102	1	196-235
2-Cresol	91	1	196-215

TABLE 1 (continued)

Compound	% Rec ¹	%RSD ²	Ret. Vol. ³ (mL)
3-Cresol	70	3	196-215
4-Cresol	88	2	196-215
Cyclophosphamide	114	10	146-185
DDD	94	4	196-235
DDE	94	2	196-235
DDT	96	6	176-215
Di-n-butyl phthalate	104	3	136-175
Diallate	97	6	156-175
Dibenzo(a,e)pyrene	94	10	216-235
Dibenzo(a,i)pyrene	99	8	216-235
Dibenz(a,j)acridine	117	9	176-195
Dibenz(a,h)anthracene	92	5	196-235
Dibenzofuran	94	1	176-235
Dibenzothiophene	94	3	196-235
1,2-Dibromo-3-chloropropane	83	2	176-215
1,2-Dibromoethane	121	8	196-215
trans-1,4-Dichloro-2-butene	107	6	176-195
cis-1,4-Dichloro-2-butene	106	6	176-215
1,2-Dichlorobenzene	81	1	196-235
1,3-Dichlorobenzene	81	1	196-235
1,4-Dichlorobenzene	81	1	196-235
3,3'-Dichlorobenzidine	98	3	176-215
2,6-Dichlorophenol	86	3	196-215
2,4-Dichlorophenoxyacetic acid (2,4-D)	80	NA	176-215
2,4-Dichlorophenol	87	2	96-215
2,4-Dichlorotoluene	70	9	196-235
1,3-Dichloro-2-propanol	73	13	176-215
Dieldrin	100	5	196-215
Diethyl phthalate	103	3	136-195
Dimethoate	79	15	146-185
3,3'-Dimethoxybenzidine ^a	15	11	156-195
Dimethyl phthalate	100	1	156-195
p-Dimethylaminoazobenzene	96	1	176-215
7,12-Dimethyl-benz(a)anthracene	77	1	176-215
2,4-Dimethylphenol	93	2	176-215
3,3'-Dimethylbenzidine	93	2	156-215
4,6-Dinitro-o-cresol	100	1	156-195
1,3-Dinitrobenzene	99	2	156-195
2,4-Dinitrophenol	118	7	176-195
2,4-Dinitrotoluene	93	4	156-195
2,6-Dinitrotoluene	101	2	156-175
Diphenylamine	95	6	176-235
Diphenyl ether	67	12	196-215
1,2-Diphenylhydrazine	92	1	176-215
Disulfoton	81	15	146-165
Endosulfan sulfate	94	2	176-195
Endosulfan I	99	8	176-215

TABLE 1 (continued)

Compound	% Rec ¹	%RSD ²	Ret. Vol. ³ (mL)
Endosulfan II	92	6	196-215
Endrin	95	6	196-215
Endrin aldehyde	97	1	176-215
Endrin ketone	94	4	176-215
Ethyl methane sulfonate	62	7	176-235
Ethyl methacrylate	126	7	176-195
Bis(2-ethylhexyl) phthalate	101	1	120-145
Famphur	99	NA	126-165
Fluorene	95	1	176-235
Fluoranthene	94	1	196-235
Heptachlor	85	2	195-215
Heptachlor epoxide	91	11	156-195
Hexachlorobenzene	108	2	196-235
Hexachlorobutadiene	86	2	176-215
Hexachlorocyclopentadiene	89	3	176-215
Hexachloroethane	85	1	196-235
Hexachloropropene	91	2	196-235
Indeno(1,2,3-cd)pyrene	79	13	216-255
Isodrin	98	5	196-235
Isophorone	68	7	156-195
cis-Isosafrole	90	4	176-215
trans-Isosafrole	88	16	156-195
Kepone	102	NA	196-235
Malononitrile	111	9	156-195
Merphos	93	12	126-165
Methoxychlor	94	6	156-195
3-Methylcholanthrene	74	12	176-195
2-Methylnaphthalene	67	6	196-215
Methyl parathion	84	13	146-185
4,4'-Methylene-bis(2-chloroaniline)	96	1	176-215
Naphthalene	95	7	196-215
1,4-Naphthoquinone	73	7	176-215
2-Naphthylamine	94	8	196-235
1-Naphthylamine	96	6	196-235
5-Nitro-o-toluidine	77	2	176-195
2-Nitroaniline	96	8	176-215
3-Nitroaniline	96	2	176-215
4-Nitroaniline	103	8	176-215
Nitrobenzene	86	2	176-195
2-Nitrophenol	95	3	176-195
4-Nitrophenol	77	3	196-215
N-Nitroso-di-n-butylamine	89	4	156-175
N-Nitrosodiethanolamine	104	3	146-185
N-Nitrosodiethylamine	94	2	156-175
N-Nitrosodimethylamine	86	13	156-195
N-Nitrosodiphenylamine	99	2	156-195
N-Nitrosodi-n-propylamine	85	4	156-175

TABLE 1 (continued)

Compound	% Rec ¹	%RSD ²	Ret. Vol. ³ (mL)
N-Nitrosomethylethylamine	83	7	156-175
N-Nitrosomorpholine	86	4	156-195
N-Nitrosopiperidine	84	4	156-195
N-Nitrosopyrrolidine	92	1	156-175
Di-n-octyl phthalate	83	4	120-156
Parathion	109	14	146-170
Pentachlorobenzene	95	2	196-235
Pentachloroethane	74	1	196-235
Pentachloronitrobenzene (PCNB)	91	8	156-195
Pentachlorophenol	102	1	196-215
Phenacetin	100	3	156-195
Phenanthrene	94	2	196-235
Phenol	83	2	156-195
1,2-Phenylenediamine	91	1	196-215
Phorate	74	NA	116-135
2-Picoline	99	14	156-215
Pronamide	105	15	156-195
Pyrene	98	2	215-235
Resorcinol	70	6	196-215
Safrole	93	1	176-215
Streptozotocin ^a	6	48	225-245
1,2,4,5-Tetrachlorobenzene	96	2	196-235
2,3,5,6-Tetrachloro-nitrobenzene	85	9	176-215
2,3,4,6-Tetrachlorophenol	95	1	196-215
2,3,5,6-Tetrachlorophenol	96	7	196-215
Tetraethyl dithiopyrophosphate (Sulfotep)	89	14	116-135
Thiosemicarbazide	74	3	146-185
2-Toluidine	92	3	176-235
4-Toluidine	87	8	176-235
Thiourea, 1-(o-chlorophenyl)	75	11	166-185
Toluene-2,4-diamine	69	7	176-215
1,2,3-Trichlorobenzene	87	1	196-235
1,2,4-Trichlorobenzene	89	1	196-235
2,4,5-Trichlorophenol	77	1	216-235
2,4,6-Trichlorophenol	95	1	216-235
2,4,5-Trichlorophenoxyacetic acid (2,4,5-T)	71	23	156-235
2,4,5-Trichlorophenoxypropionic acid	67	NA	216-215
Warfarin	94	2	166-185

NA = Not applicable, recovery presented as the average of two determinations.

^a Not an appropriate analyte for this method.

¹ The percent recovery is based on an average of three recovery values.

² The % relative standard deviation is determined from three recovery values.

³ These Retention Volumes are for guidance only as they will differ from column to column and from system to system.

Figure 1
GPC RETENTION VOLUME OF CLASSES OF ANALYTES

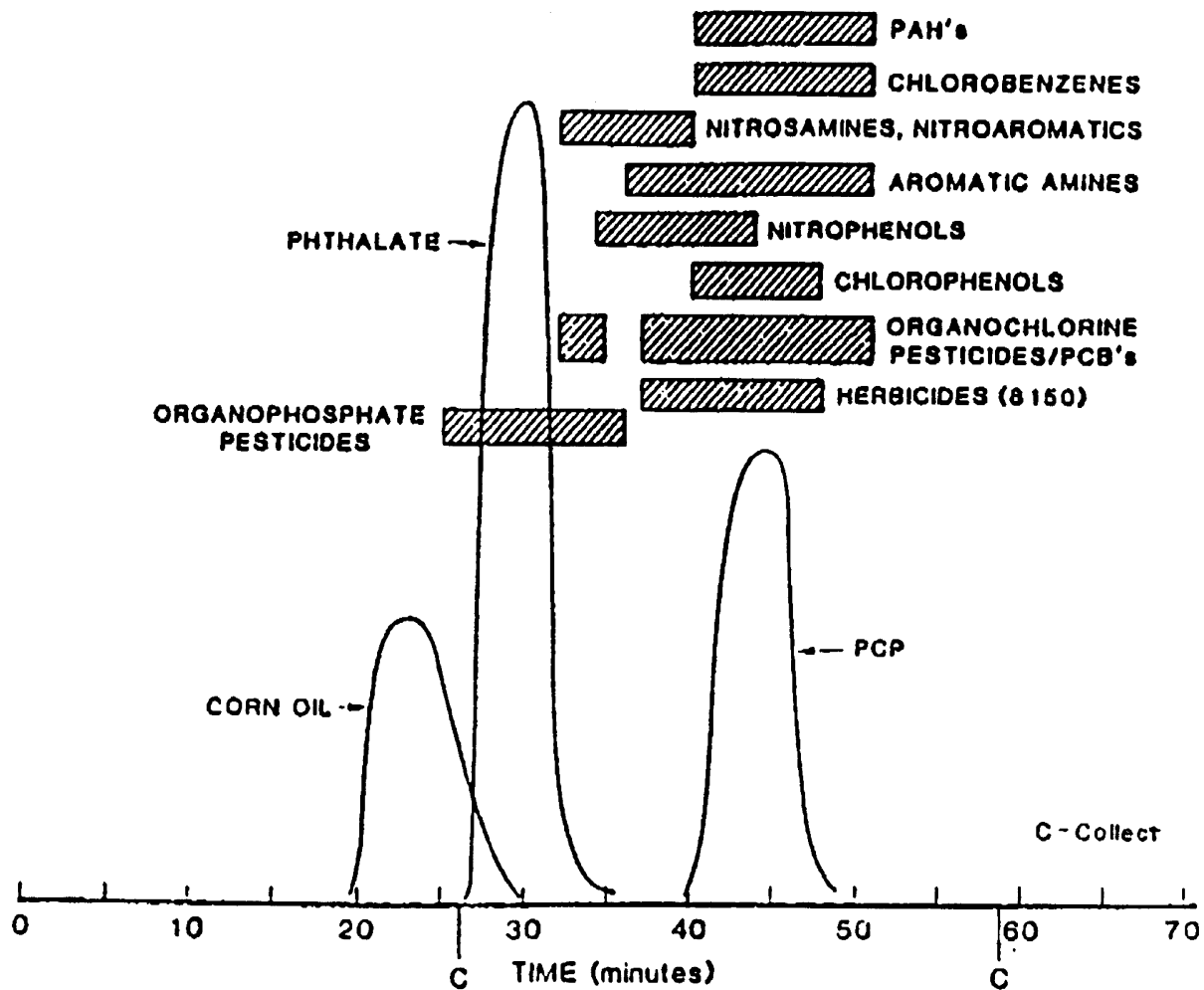
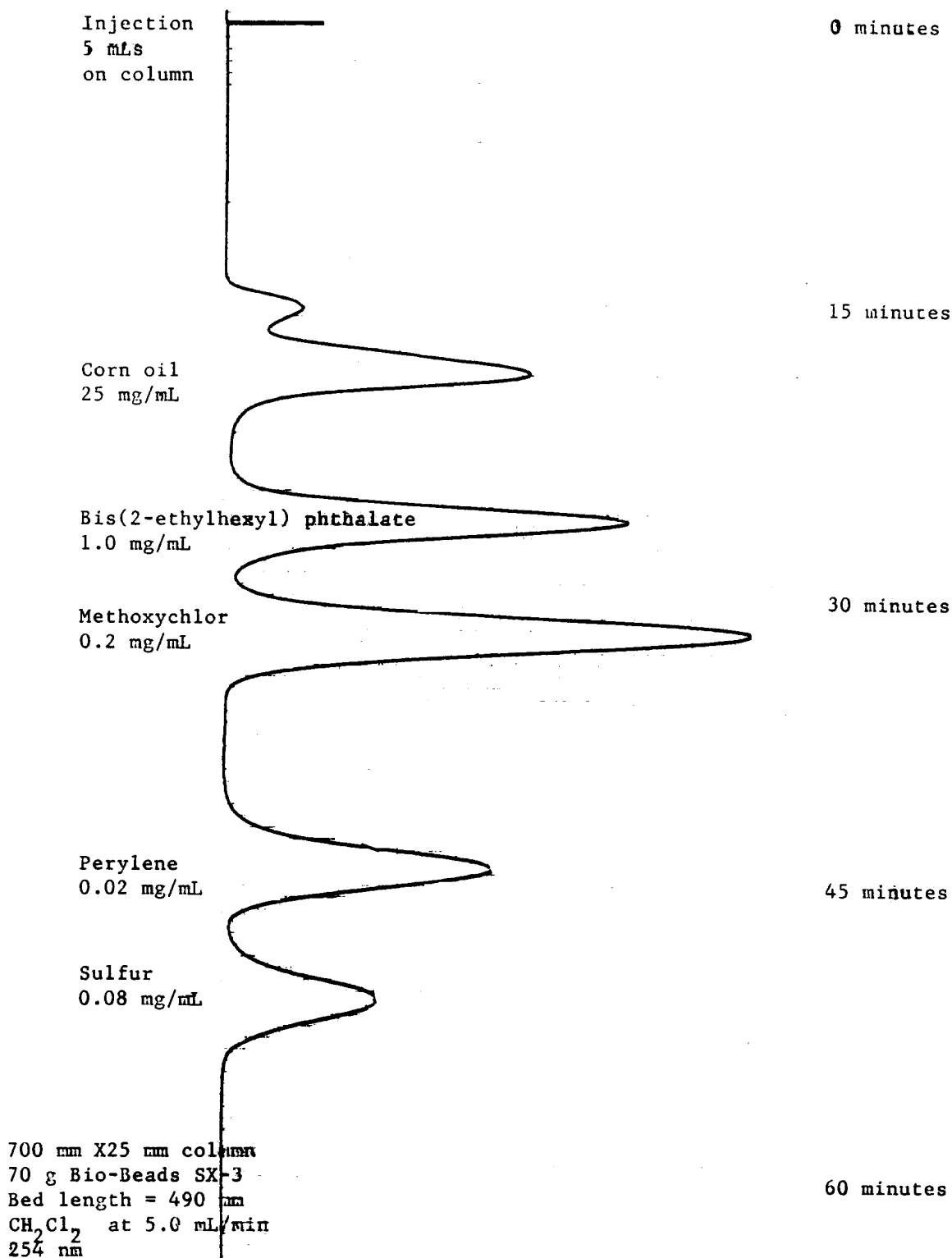
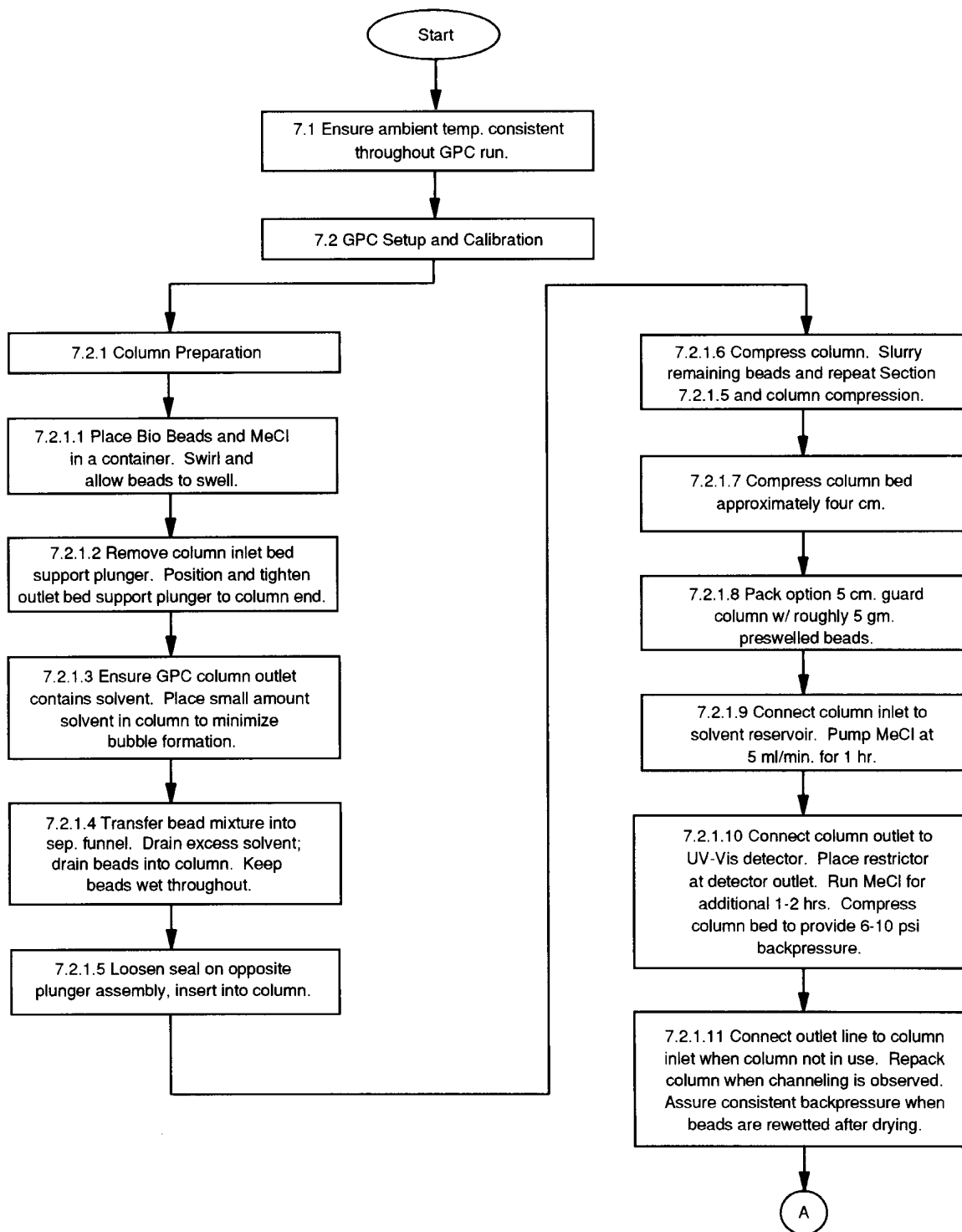
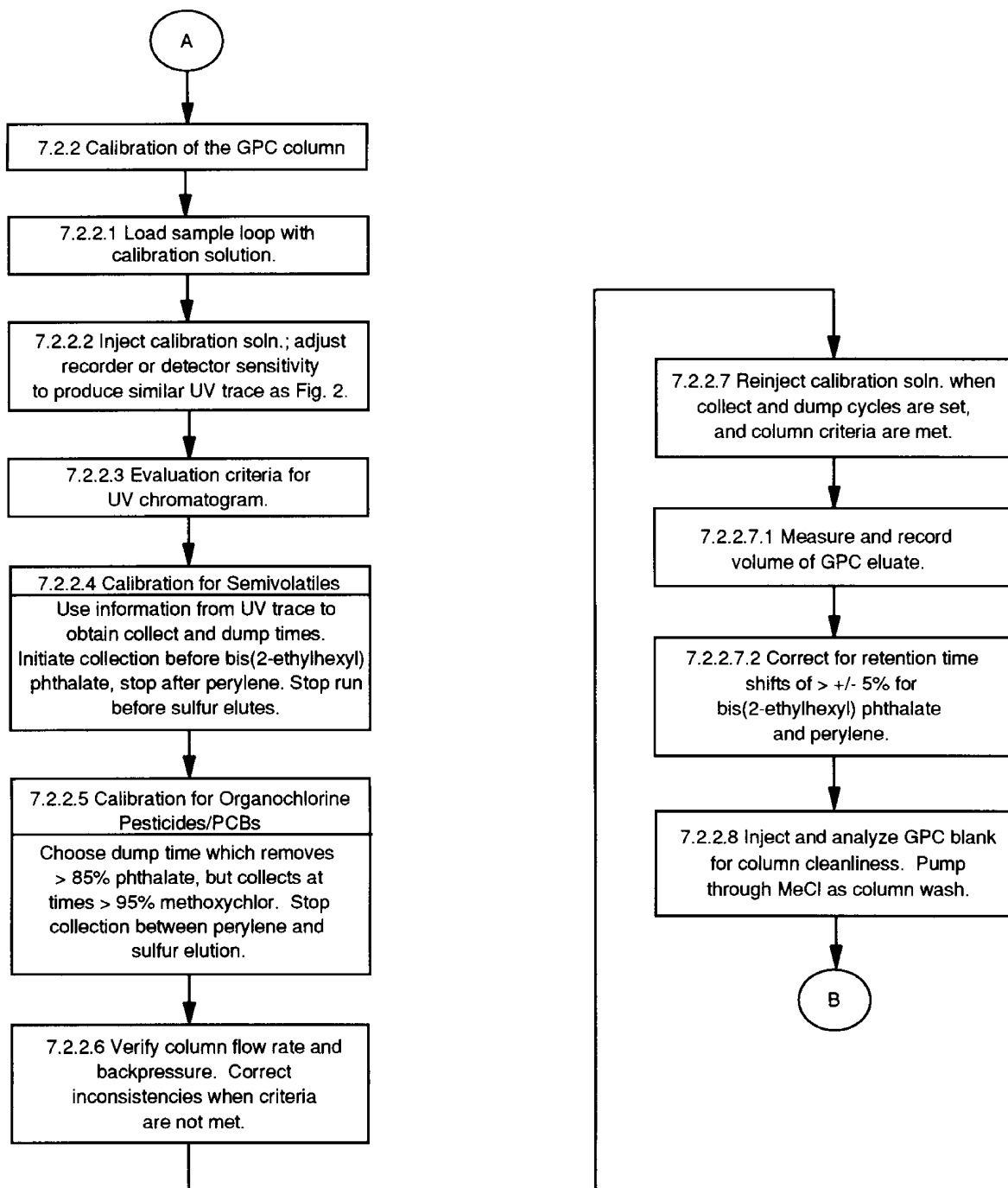


Figure 2
 UV CHROMATOGRAM OF THE CALIBRATION SOLUTION



METHOD 3640A
GEL-PERMEATION CLEANUP





METHOD 3640A
continued

