



Alternative 1 - No Action

The Memorial continues to function much the way it does today. The management of the site remains unchanged. Access to the Memorial is primarily from the north at Eads Bridge via car and Metro, and by pedestrians from the west at the Old Courthouse. The design of the Memorial centers on the 1964 final Conceptual Master Plan, which guides park managers on the completion and preservation of the Memorial grounds. The National Park Service continues to look for opportunities to complete unfinished portions of the design, contingent on project approval and funding.

The lead preservation goal is to protect the National Historic Landmark and the fundamental resources and values embodied at Jefferson National Expansion Memorial. In addition, the NPS continues to protect natural resource values in support of cultural landscape integrity. The look of the Memorial grounds and overlooks would remain, on the whole, unchanged, though repairs and maintenance of site walkways, benches and plantings to their original crisp finish would be accomplished over time. Luther Ely Smith Square retains its current form, with seasonal plantings, trees, lawns, walks and benches. Museum collections and archives continue to be housed at the Old Courthouse in a temperature-controlled storage facility, when not on exhibit in the Museum of Westward Expansion or in the Old Courthouse.

The Memorial currently offers over 5,000 programs. Educational groups and other organized tour groups make up the bulk of the special programming at the site and 154,000 park visitors take part in these activities annually. In addition, one to four special events are provided on the Memorial grounds annually. These educational and interpretive programs continue to be provided to the same extent in this alternative, and the exhibits at the Old Courthouse and Museum of Westward Expansion remain as they are today.

The only connection between the Old Courthouse and the Gateway Arch remains the at-grade crossing at Memorial Drive. The NPS continues to coordinate with the City and State to enhance the pedestrian environment, and continues to partner with the City of St. Louis and the State of Missouri to unify streetscape along Gateway Mall and streets adjacent to the Memorial, including L.K. Sullivan Boulevard and Memorial Drive. In continuation of a long-standing agreement, the NPS would work with the City of St. Louis to proactively encourage compatible riverfront improvements on the west bank of the Mississippi River. The NPS sustains existing partnerships for the provision of educational and interpretive programs, visitor services, riverfront development and transportation.

At present, barrier-free routes from the Arch grounds to the riverfront do not exist within the Memorial and the existing entrances to the visitor center and museum under the Arch do not meet codes for barrier-free access. Under this alternative, handicapped-accessible routes from the Gateway Arch to the riverfront are not provided, and the entrances under the Arch are not updated to meet ADA/universal design standards. Visitor screening for security under the Arch continues to be accommodated at the current entrances.

The Memorial's operations remain the same. Visitor parking continues in the multi-story parking garage at the north end of the park on Washington Avenue and handicapped accessible parking in the parking lot adjacent to the Old Cathedral. No accommodations for oversized vehicle parking are planned for the park, but facilities are available at a short distance from the Memorial. The limited food service (vending) currently available in the existing visitor center under the Arch is maintained. The maintenance facility for the Memorial remains at the south end of the site on Poplar Street.

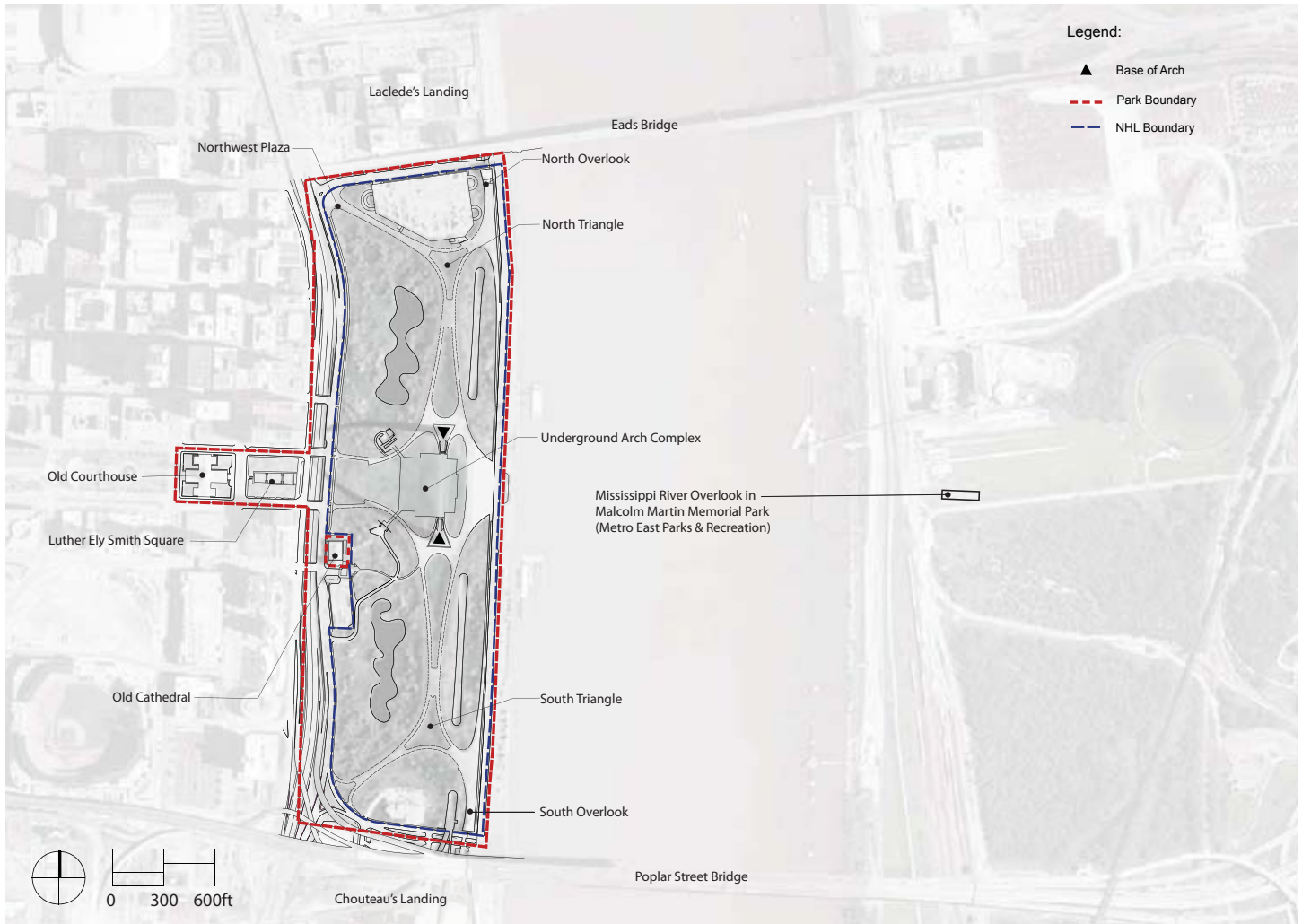
The Memorial's focus remains on the west side of the Mississippi River. The 91-acre boundary of the Memorial remains unchanged, though NPS retains the authorization to establish a boundary of up to 100 acres on the East St. Louis riverfront in the future.

How We Got Here

In June 2008, the National Park Service (NPS) released a set of preliminary alternatives outlining potential management scenarios for Jefferson Expansion National Memorial. Thousands of comments were received and subsequently analyzed by the NPS. As a result of public input, Alternative 2 was dropped and the remaining preliminary alternatives were revised. These alternatives will be described in more detail in the Draft General Management Plan / Environmental Impact Statement (GMP/EIS) to be released for public review and comment during January 2009.



Alternative 1 - No Action



Next Steps

The No Action alternative and alternatives 3, 4 and 5 will be carried forward into the Draft Jefferson National Expansion Memorial GMP/EIS, to be released in Winter 2009. In the draft plan, each of the alternatives will be more fully described and the financial and environmental consequences of each alternative will be presented. The public will have 45 days to review the document, and during this time, the NPS will host public meetings in order to provide the public an opportunity to speak directly with park managers and members of the planning team. I encourage everyone to comment on the document and provide ways the alternatives can be strengthened.

Following the close of public review, each of your comments will be read and considered carefully. The team will respond to all substantive comments and document any changes to the plan before issuing a final GMP/EIS.

Sincerely,

Tom Bradley



Preferred

revised Preliminary Alternative 3 - Program Expansion

The Memorial is revitalized by expanded programming, facilities and partnerships. In this alternative, the NPS capitalizes on multiple opportunities to expand the visitor experience throughout the Memorial. A design competition akin to the 1947 competition will be held to generate ideas to revitalize the Memorial grounds, expand interpretation, education opportunities and visitor amenities (e.g., restaurant, restrooms) in an area bounded by Memorial Drive, Washington Avenue, Poplar Street, Luther Ely Smith Square and the north and south reflecting ponds. Near the close of the competition, the final design entries will undergo environmental and historic preservation review by the NPS, prior to final approval by the NPS.

To the greatest extent possible, NPS will preserve the essential character-defining features of the National Historic Landmark designed landscape and structures, and protect the full range of fundamental resources and values of the Memorial by delineating the design parameters in the competition program. The look of the Memorial grounds and overlooks could potentially be changed, so long as the essential character-defining elements of the Memorial grounds are retained. Museum collections and archives continue to be housed at the Old Courthouse in a temperature-controlled storage facility, when not on exhibit in the Museum of Westward Expansion or in the Old Courthouse.

The NPS strengthens educational and interpretive programs currently offered at the Memorial and expands the opportunities for visitors to participate in more interactive experiences. The grounds surrounding the Gateway Arch accommodate and promote more visitor activities and special events than are currently provided. Additionally, the exhibits at the Old Courthouse and in the Museum of Westward Expansion under the Gateway Arch are redesigned to engage visitors in more active participation.

Increased connectivity between the Old Courthouse and the Gateway Arch is included within the guidelines for the design competition. Proposals for increased connectivity could include any combination of a single elevated deck, multiple bridges and improved at-grade pedestrian crossings across Memorial Drive. The NPS will coordinate with the City and State to enhance the pedestrian environment, and unify streetscape along Gateway Mall and streets adjacent to the Memorial, including L.K. Sullivan Boulevard and Memorial Drive, and increase the connectivity between the adjacent downtown, Laclède's and Chouteau's Landing neighborhoods. The NPS will continue to work with the City of St. Louis to proactively encourage compatible riverfront improvements on the west bank of the Mississippi River and initiate similar partnerships for the east bank of the Mississippi River. The NPS sustains long-standing partnerships for the provision of educational and interpretive programs, visitor services, riverfront development and transportation, and develops new partnerships to assist in managing the East St. Louis addition in similar ways, and to sponsor and manage a design competition.

Barrier-free routes from the Arch grounds to the riverfront are established within the Memorial under this alternative, and the existing entrances to the visitor center and museum under the Arch are redesigned to meet ADA/universal design standards. Visitor screening for security under the Arch will stay at the current entrances. Any new facilities developed under this alternative will be designed to include barrier-free access and heightened security requirements.

Visitor parking is retained on-site for passenger vehicles and expanded to provide for oversized recreational vehicles to park at the Memorial. Parking may still be provided in a location adjacent to the Old Cathedral, so long as landscape integrity and visual compatibility are addressed. Ultimately, the location of parking will be determined as a result of the design competition. The food service (vending) currently available in the existing visitor center under the Arch is expanded, and may be provided for elsewhere at the Memorial. The Memorial's maintenance facility may move outside of the Memorial boundary; ultimately, the location of the NPS maintenance operations will be determined through the design competition.

The 91-acre boundary of the Memorial is amended to add approximately 50 acres in East St. Louis. Any acquisitions would be by willing seller only.

How We Got Here

In June 2008, the National Park Service (NPS) released a set of preliminary alternatives outlining potential management scenarios for Jefferson Expansion National Memorial. Thousands of comments were received and subsequently analyzed by the NPS. As a result of public input, Alternative 2 was dropped and the remaining preliminary alternatives were revised. These alternatives will be described in more detail in the Draft General Management Plan / Environmental Impact Statement (GMP/EIS) to be released for public review and comment during January 2009.



revised Preliminary Alternative 3 - Program Expansion



Heritage Education and Visitor Amenities	Original Landscape	Orientation	Streetscape	Service	Design Competition
Provide visitor orientation, interpretation, education and amenities.	Preservation of the National Historic Landmark (NHL).	Provide visitor orientation, enhance visual and physical connectivity and support Memorial operations (parking).	Create visual and physical connectivity between the city streets, waterfront and the Memorial.	Support Memorial operations.	Provide a canvass for a design competition to explore creative approaches to revitalizing the Memorial.

Next Steps

The No Action alternative and alternatives 3, 4 and 5 will be carried forward into the Draft Jefferson National Expansion Memorial GMP/EIS, to be released in Winter 2009. In the draft plan, each of the alternatives will be more fully described and the financial and environmental consequences of each alternative will be presented. The public will have 45 days to review the document, and during this time, the NPS will host public meetings in order to provide the public an opportunity to speak directly with park managers and members of the planning team. I encourage everyone to comment on the document and provide ways the alternatives can be strengthened.

Following the close of public review, each of your comments will be read and considered carefully. The team will respond to all substantive comments and document any changes to the plan before issuing a final GMP/EIS.

Sincerely,



revised Preliminary Alternative 4 - Portals

This alternative focuses on revitalizing the Memorial through enhanced visual and physical connections from the surrounding neighborhoods to the Memorial. It features four gateways (North, South, East, and West) to enter the Memorial that include a nearly 3-block, at-grade lid centered on the Old Courthouse, two elevated pedestrian bridges and pedestrian at-grade improvements at major entrances. Further connectivity is promoted with a new transportation system linking visitor attractions within and outside of the Memorial. Visitors can also access the Memorial from the east via a commercial water taxi from East St. Louis, Illinois. The museum under the Arch is expanded and incorporates a new main west entry into the museum.

The lead preservation goal is to protect the National Historic Landmark and the fundamental resources and values of the Memorial. The Memorial grounds remain, on the whole, unchanged. Sensitive rehabilitation or renovation of the designed landscape and structures is allowed to improve accessibility, security and provide a modest increase in heritage education so long as the integrity of the National Historic Landmark is protected.

In this alternative, visitor activities, programs and services would be expanded to provide more opportunities and conveniences than are currently provided. The exhibits at the Old Courthouse and in the museum under the Arch are redesigned to provide more interactive and engaging experiences for visitors. The museum under the Arch is renovated to expand its size, provide a new, state-of-the-art storage facility for collections and archives and to provide a new pedestrian entrance on Memorial Drive. Luther Ely Smith Square is zoned to include visitor orientation and services such as site information, parking and restrooms. The area at the North end of the Memorial is renovated to provide visitor orientation and services and the North and South Overlooks are renovated for heritage education and visitor amenities.

The NPS will continue to work with the City of St. Louis to proactively encourage compatible riverfront improvements on the west bank of the Mississippi River, and initiates similar partnerships for the east bank of the Mississippi River. The NPS sustains existing partnerships for the provision of educational and interpretive programs, visitor services, and transportation, and develops new partnerships to assist in the new seasonal water taxi linking the east and west units of the Memorial and the management the East St. Louis addition.

Barrier-free routes from the Arch grounds to the riverfront are established within the Memorial, at either existing entrances to the visitor center and museum under the Arch, or at new entrances in close proximity, to meet ADA/universal design standards. Visitor screening for security under the Arch stays at the current entrances or in close proximity to the existing entrance of the visitor center and is added to the new entrance on Memorial Drive. Any new facilities developed under this alternative include barrier-free access and heightened security requirements.

The parking lot adjacent to the Old Cathedral is reconstructed as a new underground facility with the surface renovated to enhance visual compatibility with the Memorial landscape, and to provide improved bus/shuttle drop-off and pick-up. Visitor parking at the north end remains, but the garage is reconstructed to put parking facilities below grade and to allow for a moderate amount of oversized recreational vehicle parking. Parking is also installed below grade at Luther Ely Smith Square. The food service (vending) currently available in the existing visitor center under the Arch is expanded, and may be accommodated in the new orientation facilities at the north end of the Memorial, as well as with portable carts at Luther Ely Smith Square and the overlooks. The Memorial's maintenance facility remains at the South end of the Memorial.

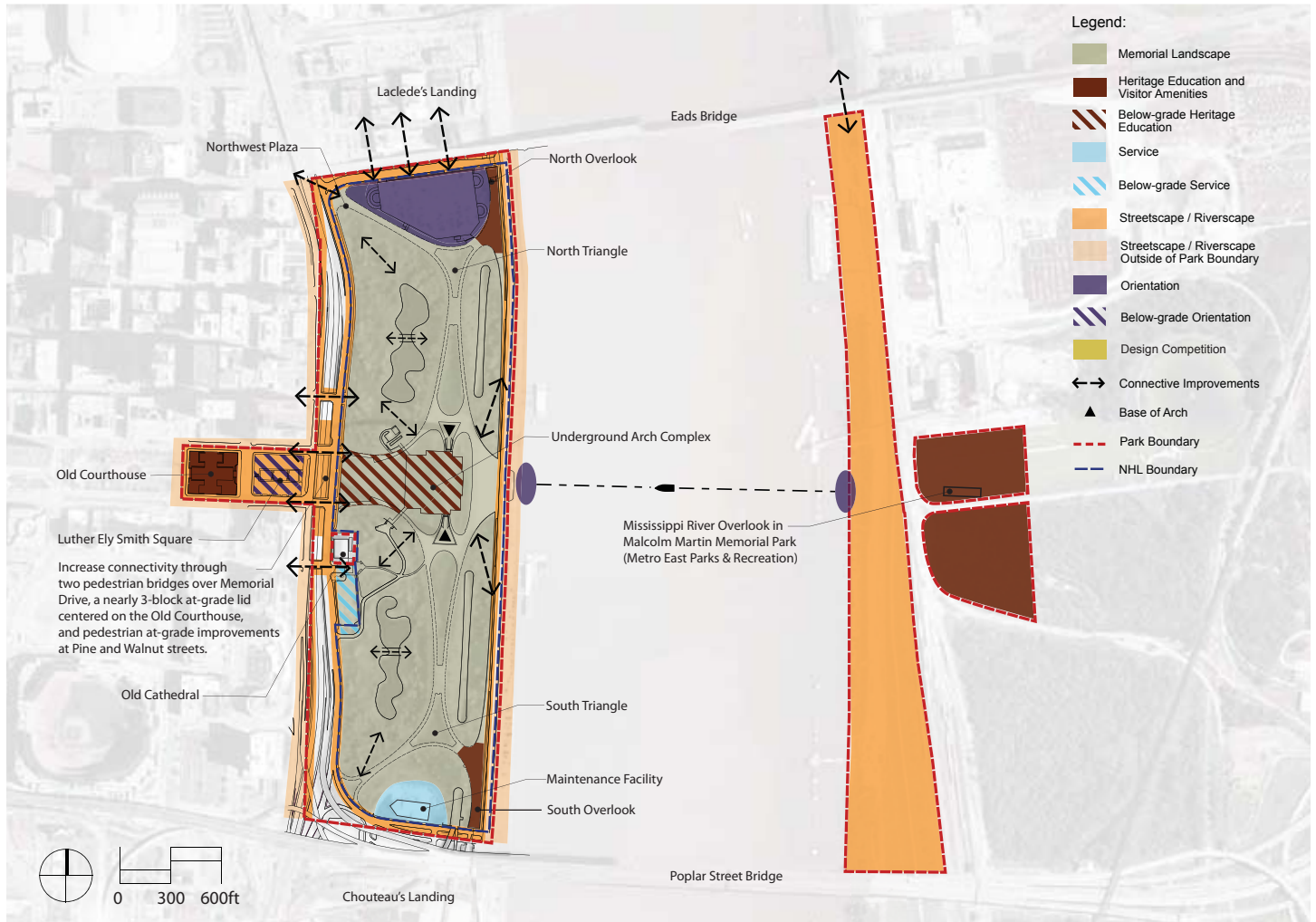
The 91-acre boundary of the Memorial is amended to add approximately 50 acres in East St. Louis. Any acquisitions are by willing seller only.

How We Got Here

In June 2008, the National Park Service (NPS) released a set of preliminary alternatives outlining potential management scenarios for Jefferson Expansion National Memorial. Thousands of comments were received and subsequently analyzed by the NPS. As a result of public input, Alternative 2 was dropped and the remaining preliminary alternatives were revised. These alternatives will be described in more detail in the Draft General Management Plan / Environmental Impact Statement (GMP/EIS) to be released for public review and comment during January 2009.



revised Preliminary Alternative 4 - Portals



Heritage Education and Visitor Amenities	Original Landscape	Orientation	Streetscape	Service	Design Competition
Provide visitor orientation, interpretation, education and amenities.	Preservation of the National Historic Landmark (NHL).	Provide visitor orientation, enhance visual and physical connectivity and support Memorial operations (parking).	Create visual and physical connectivity between the city streets, waterfront and the Memorial.	Support Memorial operations.	Provide a canvass for a design competition to explore creative approaches to revitalizing the Memorial.

Next Steps

The No Action alternative and alternatives 3, 4 and 5 will be carried forward into the Draft Jefferson National Expansion Memorial GMP/EIS, to be released in Winter 2009. In the draft plan, each of the alternatives will be more fully described and the financial and environmental consequences of each alternative will be presented. The public will have 45 days to review the document, and during this time, the NPS will host public meetings in order to provide the public an opportunity to speak directly with park managers and members of the planning team. I encourage everyone to comment on the document and provide ways the alternatives can be strengthened.

Following the close of public review, each of your comments will be read and considered carefully. The team will respond to all substantive comments and document any changes to the plan before issuing a final GMP/EIS.

Sincerely,



revised Preliminary Alternative 5 - Park into the City

Extending the visitor's experience of the Memorial into downtown St. Louis and the surrounding neighborhoods, including East St. Louis, is the essence of this alternative. The alternative emphasizes enhanced services and visual themes that begin and continue into adjacent neighborhoods and areas, while reconsidering the transportation and access challenges in the park. The "edge" of the park is softened by the removal of Memorial Drive, and the transformation of that space into a welcoming community plaza.

The lead preservation goal is to protect the National Historic Landmark and the fundamental resources and values of the Memorial. The Memorial grounds remain, on the whole, unchanged. Sensitive rehabilitation of the designed landscape and structures is allowed to improve accessibility and security so long as the integrity of the National Historic Landmark is protected. The largest change in the look and feel of the Memorial is caused by the removal and rerouting of Memorial Drive traffic northbound along 4th Street and southbound on Broadway, between Poplar and Locust streets. The vacated corridor of Memorial Drive will be renovated into a series of large civic/community gathering plazas, increasing connectivity between the Old Courthouse and the Gateway Arch at Luther Ely Smith Square.

The NPS strengthens educational and interpretive programs currently offered at the Memorial, and expands opportunities for visitors to participate in more interactive experiences. The grounds surrounding the Gateway Arch accommodate and promote more visitor activity and special events than are currently provided. Museum collections and archives are moved into a state-of-the-art storage facility in the new education and research facility at the south end of the park, when not on exhibit in the Museum of Westward Expansion or in the Old Courthouse. The exhibits at the Old Courthouse and in the museum under the Arch are redesigned to engage visitors in more active participation. The north and south ends of the Memorial are zoned to allow for new visitor amenities and educational/cultural facilities. On the north, the existing parking garage is renovated to provide for visitor orientation and some heritage education, as well as for a multi-modal gateway and transit center that would provide a transportation system linking visitor attractions within and outside of the Memorial. On the south end, the NPS maintenance facility is moved outside of the Memorial boundary to make way for a new education and research center, increasing the number of visitors to that portion of the park.

The NPS will continue to work with the City of St. Louis to proactively encourage compatible riverfront improvements on the west bank of the Mississippi River, and initiates similar partnerships for the east bank of the Mississippi River. The NPS continues existing partnerships for the provision of educational and interpretive programs, visitor services and transportation, and develops new partnerships to assist in the new education and research center, the multi-modal transit center and the management of the East St. Louis addition.

Barrier-free routes from the Arch grounds to the riverfront are established within the Memorial, and existing entrances to the visitor center and museum under the Arch are redesigned to meet ADA/universal design standards. Visitor screening for security under the Arch stays at the current entrances. Any new facilities developed under this alternative include barrier-free access and heightened security requirements.

On-site visitor parking is eliminated at the north end of the park and adjacent to the Old Cathedral. Visitors are directed to use existing parking lots and garages outside the Memorial. An improved bus/shuttle drop-off and pick-up is added adjacent to the Old Cathedral. The food service (vending) currently available in the existing visitor center under the Arch is expanded, and may be provided for elsewhere at the Memorial.

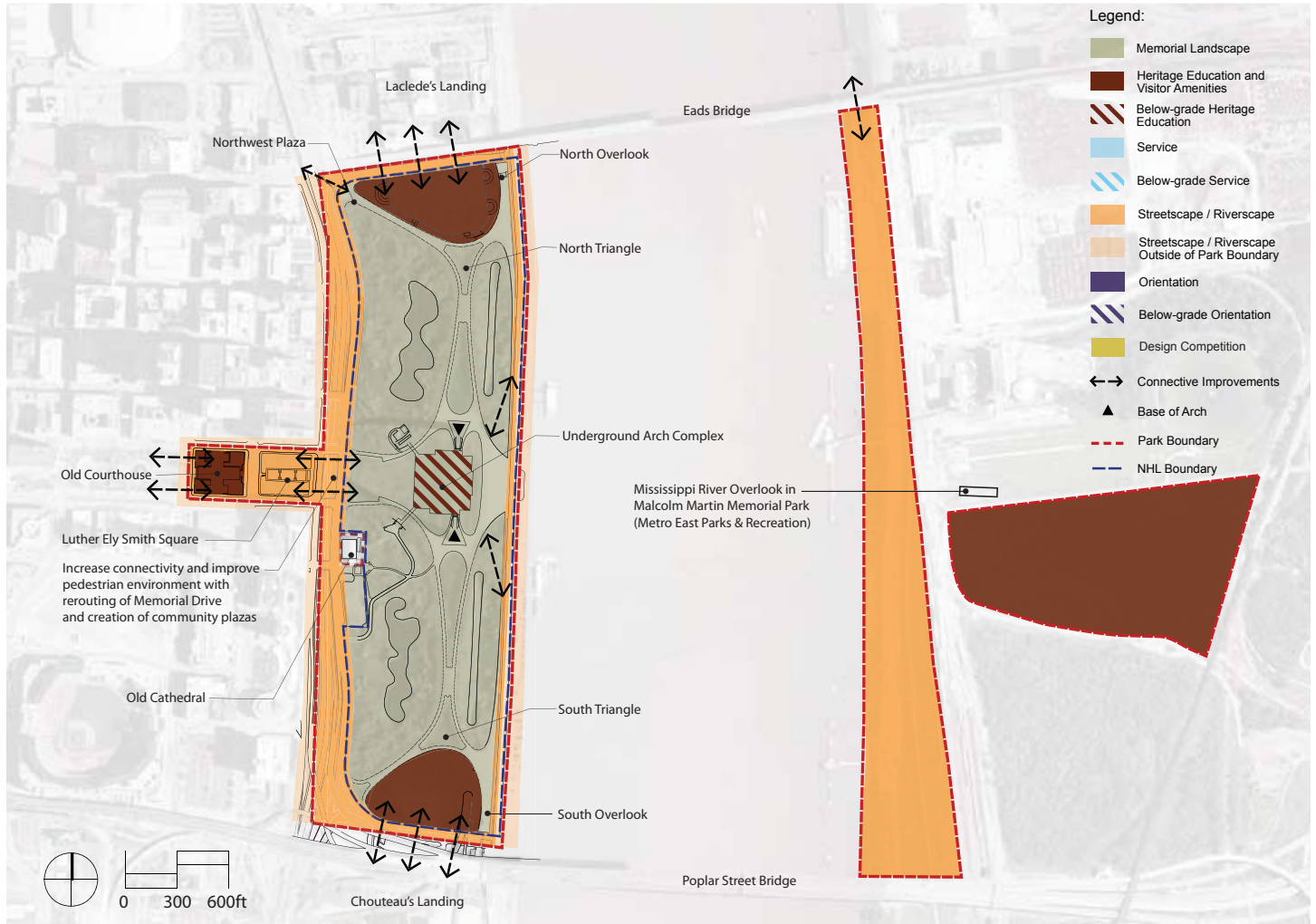
The 91-acre boundary of the Memorial is amended to add approximately 65 acres in East St. Louis. Any acquisitions are by willing seller only.

How We Got Here

In June 2008, the National Park Service (NPS) released a set of preliminary alternatives outlining potential management scenarios for Jefferson Expansion National Memorial. Thousands of comments were received and subsequently analyzed by the NPS. As a result of public input, Alternative 2 was dropped and the remaining preliminary alternatives were revised. These alternatives will be described in more detail in the Draft General Management Plan / Environmental Impact Statement (GMP/EIS) to be released for public review and comment during January 2009.



revised Preliminary Alternative 5 - Park into the City



Heritage Education and Visitor Amenities	Original Landscape	Orientation	Streetscape	Service	Design Competition
Provide visitor orientation, interpretation, education and amenities.	Preservation of the National Historic Landmark (NHL).	Provide visitor orientation, enhance visual and physical connectivity and support Memorial operations (parking).	Create visual and physical connectivity between the city streets, waterfront and the Memorial.	Support Memorial operations.	Provide a canvass for a design competition to explore creative approaches to revitalizing the Memorial.

Next Steps

The No Action alternative and alternatives 3, 4 and 5 will be carried forward into the Draft Jefferson National Expansion Memorial GMP/EIS, to be released in Winter 2009. In the draft plan, each of the alternatives will be more fully described and the financial and environmental consequences of each alternative will be presented. The public will have 45 days to review the document, and during this time, the NPS will host public meetings in order to provide the public an opportunity to speak directly with park managers and members of the planning team. I encourage everyone to comment on the document and provide ways the alternatives can be strengthened.

Following the close of public review, each of your comments will be read and considered carefully. The team will respond to all substantive comments and document any changes to the plan before issuing a final GMP/EIS.

Sincerely,

Tom Bradley