

Chapter 4

# **The GIS Project for the Geologic Assessment of Undiscovered, Technically Recoverable Coalbed-Gas Resources in Cretaceous and Tertiary Rocks, North Slope and Adjacent State Waters, Alaska**



*Click here to return to*  
**Volume Title Page**

By Christopher P. Anderson

Chapter 4 of

**Geologic Assessment of Undiscovered, Technically Recoverable Coalbed-Gas Resources in Cretaceous and Tertiary Rocks, North Slope, and Adjacent State Waters, Alaska**

Compiled By Stephen B. Roberts

U.S. Geological Survey Digital Data Series DDS-69-S

U.S. Department of the Interior  
U.S. Geological Survey

**U.S. Department of the Interior**  
DIRK KEMPTHORNE, Secretary

**U.S. Geological Survey**  
Mark D. Myers, Director

U.S. Geological Survey, Reston, Virginia: 2008

For product and ordering information:  
World Wide Web: <http://www.usgs.gov/pubprod>  
Telephone: 1-888-ASK-USGS

For more information on the USGS—the Federal source for science about the Earth, its natural and living resources, natural hazards, and the environment:  
World Wide Web: <http://www.usgs.gov>  
Telephone: 1-888-ASK-USGS

Publishing support provided by:  
Denver Publishing Service Center  
Manuscript approved for publication October 17, 2008

For more information concerning this publication, contact:  
Team Chief Scientist, USGS Central Energy Resources  
Box 25046, Mail Stop 939  
Denver, CO 80225  
(303)236-1647

Or visit the Central Energy Resources Team site at:  
<http://energy.cr.usgs.gov/>

Any use of trade, product, or firm names is for descriptive purposes only and does not imply endorsement by the U.S. Government.

Although this report is in the public domain, permission must be secured from the individual copyright owners to reproduce any copyrighted materials contained within this report.

*Suggested citation:*

Anderson, C.P.,—2008, The GIS Project for the Geologic Assessment of Undiscovered, Technically Recoverable Coalbed-Gas Resources in Cretaceous and Tertiary Rocks, North Slope and Adjacent State Waters, Alaska, *in* Roberts, S.B., compiler, Geologic assessment of undiscovered, technically recoverable coalbed-gas resources in Cretaceous and Tertiary rocks, North Slope and adjacent State waters, Alaska: U.S. Geological Survey Digital Data Series DDS-69-S, chap. 4, p. 1

# The GIS Project for the Geologic Assessment of Undiscovered, Technically Recoverable Coalbed-Gas Resources in Cretaceous and Tertiary Rocks, North Slope and Adjacent State Waters, Alaska

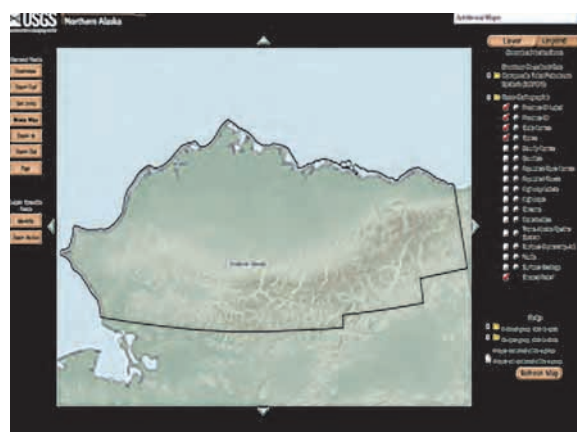
By Christopher P. Anderson

A geographic information system (GIS) focusing on the North Slope of Alaska was developed as a visual-analysis tool for the U.S. Geological Survey's 2006 Geologic Assessment of Undiscovered, Technically Recoverable Coalbed-Gas Resources in Cretaceous and Tertiary Rocks, North Slope, and Adjacent State Waters, Alaska. The Central Energy Resources Team of the U.S. Geological Survey has also developed an Internet Map Service to deliver the GIS data to the public. This mapping tool utilizes information from a database about the oil and natural gas endowment of the United States—including physical locations of geologic and geographic data—and converts the data into visual layers. Portrayal and analysis of geologic features on an interactive map provide an excellent tool for understanding domestic oil and gas resources for strategic planning, formulating economic and energy policies, evaluating lands under the purview of the Federal Government, and developing sound environmental policies. Assessment results can be viewed and analyzed or downloaded from the Internet Web site.

Hydrocarbon assessment-unit boundaries include the assessment results as attributes. Specialized maps, which we in the Central Energy Resources Team refer to as “cell maps,” illustrate the degree of exploration and the type and distribution of production for each assessment unit. Other data that are also available in the interactive map include the following:

- Cities
- Roads
- Geologic provinces
- Total petroleum system
- States
- Counties
- Streams and water bodies
- Federal surface ownership
- Shaded relief

Click on the map below to access the Northern Alaska Province Internet Map Service.



The spatial data that formed the basis of the GIS for the Northern Alaska Province are provided online at the USGS National Oil and Gas Assessment Web site (NOGA Online: <http://energy.cr.usgs.gov/oilgas/noga/>) and are also contained on this CD-ROM in the Spatial folder. Esri shapefile data format are provided as noted by the Shape subfolder. The Doc folder contains metadata documentation in HTML format that is also incorporated in each shapefile in XML format. Most of the base cartographic data layers used in the GIS project were obtained from the U.S. Department of the Interior National Atlas Web site, [www.nationalatlas.gov](http://www.nationalatlas.gov), or the U.S. Geological Survey National Map, <http://nmviewogc.cr.usgs.gov/viewer.htm>.



***Click here to return to  
Volume Title Page***