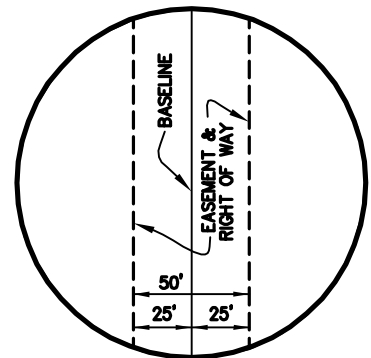
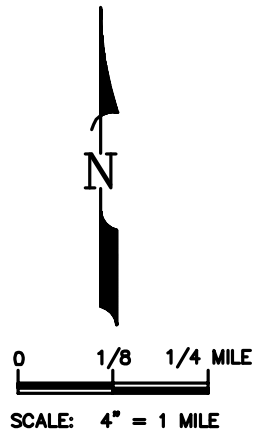
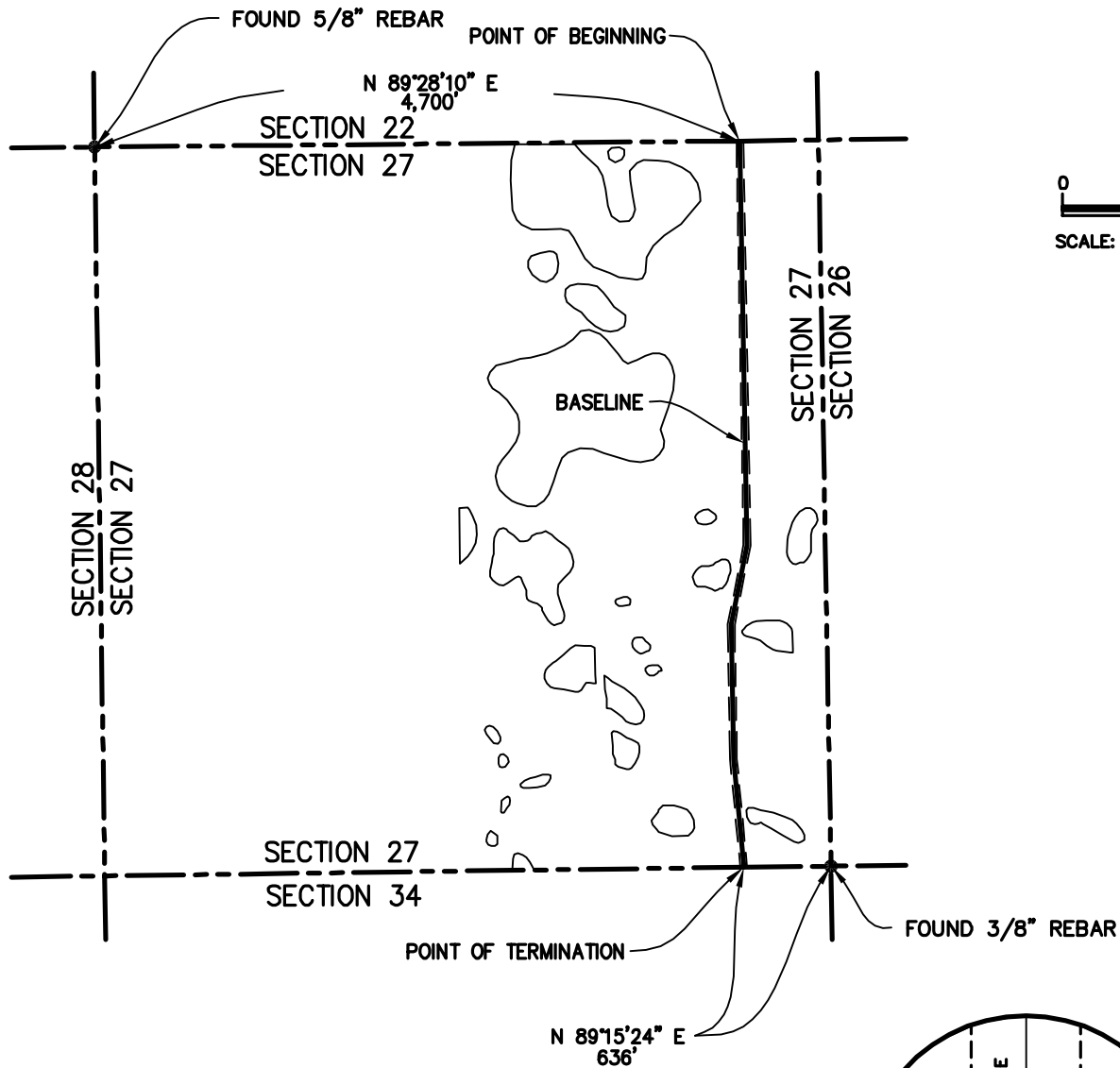


NELSON COUNTY, NORTH DAKOTA

SECTION 27, T-149-N, R-57-W, 5th P.M.
WETLAND EASEMENT 401X



LENGEND:
P.M. = PRINCIPAL MERIDIAN
STA. = STATION

NOTE:
ALL BEARINGS AND DISTANCES SHOWN HEREIN ARE GRID, BASED UPON THE UNIVERSAL TRANSVERSE MERCATOR (UTM), ZONE 14 NORTH, AS DERIVED FROM A GPS SURVEY, PERFORMED IN MARCH 2006.

- * APPROXIMATE TOTAL LENGTH ACROSS WETLAND AREAS: 0 FEET
- * APPROXIMATE TOTAL AREA UPON WETLAND AREAS: 0 ACRE

				 TransCanada <i>In business to deliver</i>	
				KEYSTONE PIPELINE PROJECT	
				WETLAND EASEMENT 401X	
				SECTION 27, T-149-N, R-57-W	
				PROJECT: 9347.000	
				EXHIBIT A	
SCALE	DATE	DRAWN BY	CHECKED BY	APPROVED BY	DRAWING NUMBER
4" = 1 MILE	07/08/08	XY	GTC	ML	1399-00-ML-SK-464