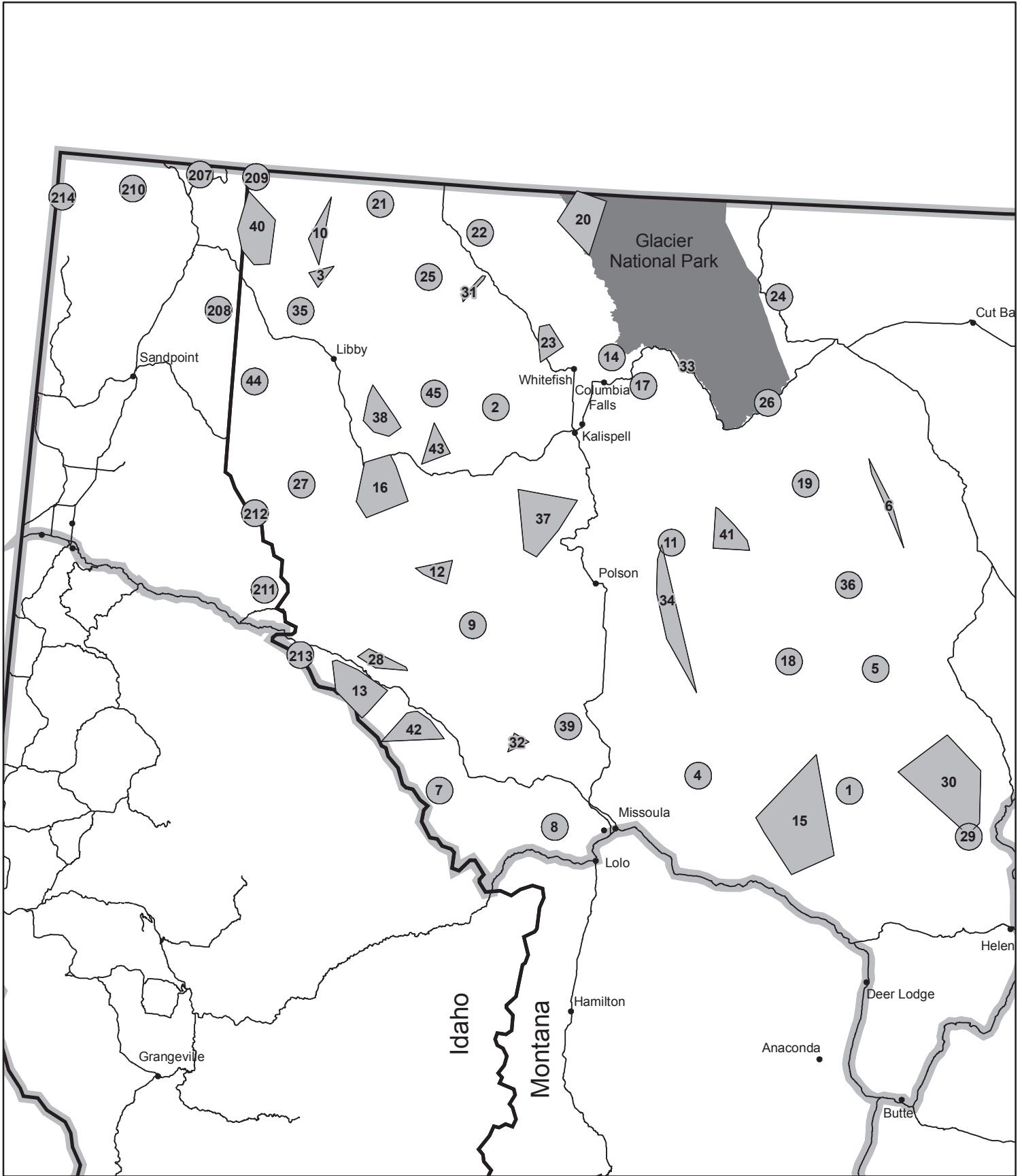
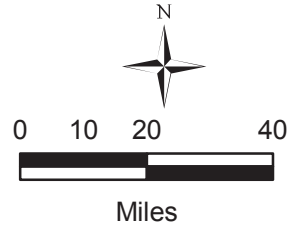


Figure 2. Northwest Montana Wolf Recovery Area



- 1 Wolf Pack Distribution (See Tables)
- Recovery Area Boundary
- State Boundary
- Major Highways
- National Park Service



Montana Fish, Wildlife and Parks Information Services Division generated wolf pack locations from telemetry locations and other data provided by US Fish & Wildlife Service, National Park Service, Idaho Fish & Game, Nez Perce Tribe, and Wyoming Game & Fish. All other data layers from Montana Natural Resource Information System, Idaho and Wyoming data clearinghouses. Other data layers digitized at 1:100,000.

Montana Fish, Wildlife and Parks; 1420 E. 6th Ave, Helena, MT 59620
AnnualProjects/WolfReport/2008_Season - 3/3/2009