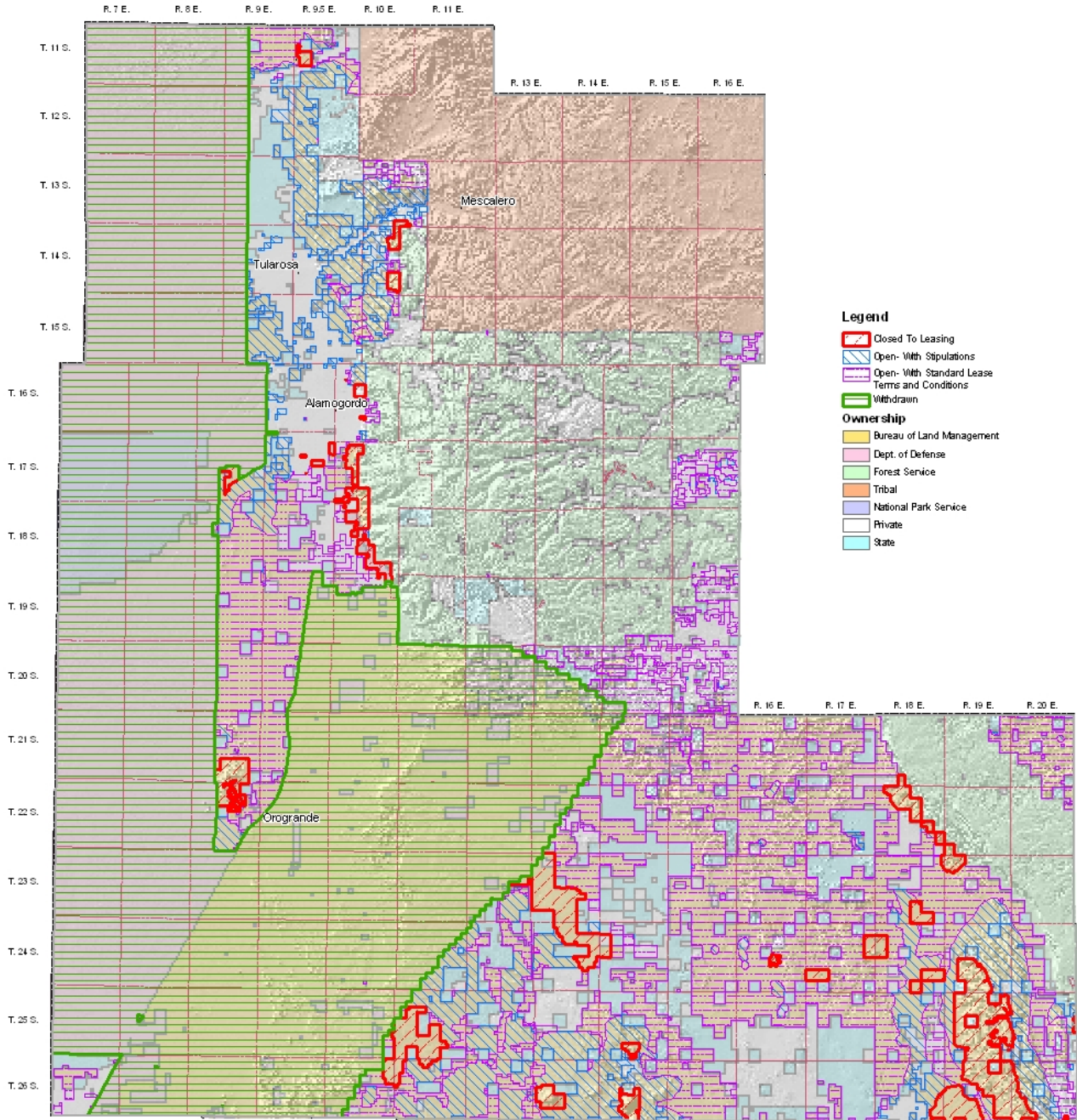


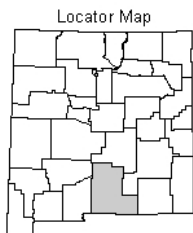
# Otero County



### Legend

- Closed To Leasing
  - Open- With Stipulations
  - Open- With Standard Lease Terms and Conditions
  - Withdrawn
- Ownership**
- Bureau of Land Management
  - Dept. of Defense
  - Forest Service
  - Tribal
  - National Park Service
  - Private
  - State

0 340 680 1020 Miles



No Warranty is made by the Bureau of Land Management as to the accuracy, reliability, or completeness of these data for individual use or aggregate use with other data, or for purposes not intended by the BLM. Spatial information is not set National Map Accuracy Standards. This information is subject to change without notification.