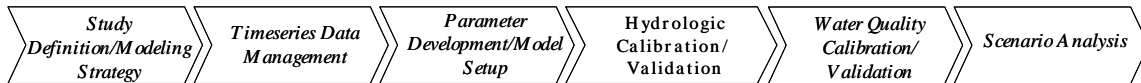




## Exercise 6 - WinHSPF Hydrology Calibration

### BASINS/HSPF Application Steps




The goal of calibration is to “tune” the model so that the simulated flow resembles the observed flow data as closely as possible. This is accomplished by adjusting various input parameters within WinHSPF. In this computer discussion, we will discuss many of the key calibration parameters. The most important thing to remember is that the estimated values of each parameter should be realistic and make physical sense.


Appendix B explains some of the important site-specific parameters that need to be entered into WinHSPF before calibrating the hydrology. This information includes F-tables, local weather data, and topography information. In order to save time, we have entered these inputs for the West Branch Patuxent model. We will open and use an updated project for this exercise.

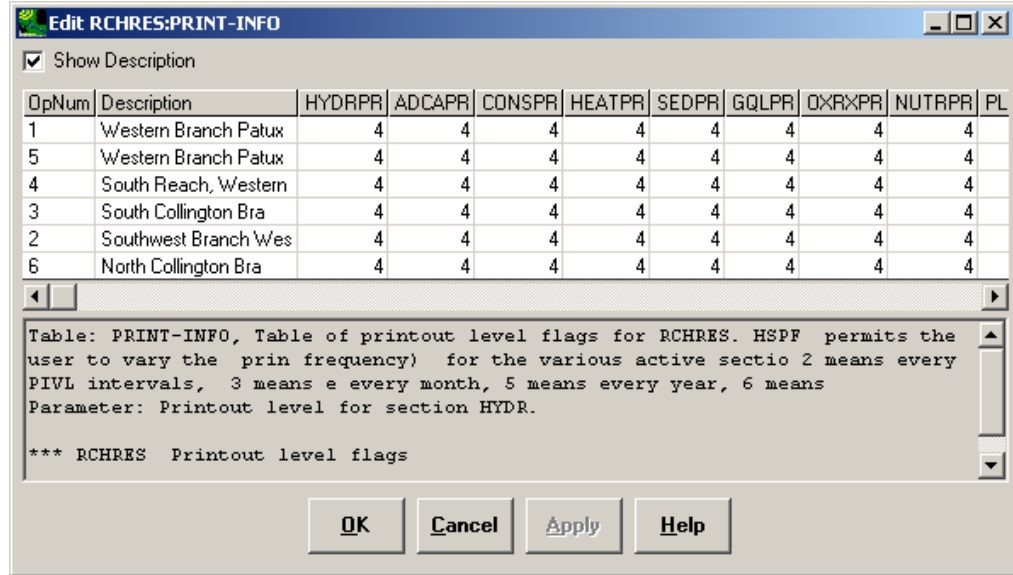
Before we begin calibrating, we will run the input file (\*.uci) that contains the updated site-specific information. After we have looked at the simulated flow output, we will adjust the values of some important calibration parameters and look at how those changes affect the simulated flow.

### A. Before Calibration

1. If WinHSPF isn't open, from the **Start** menu under **Programs**, select **BASINS** and then **WinHSPF**.
2. Click  (Open File).
3. Navigate to *c:\basins\modelout\Man\_Cal* and select “*hyd\_man.*” Click OPEN.

The best way to begin the calibration process is to look at the annual total runoff volume error. In this section, we will compare the total annual simulated flow volumes to the total annual observed flow volumes. In the following steps, we will specify that we want the total annual simulated flow to be printed to the output file. We will compare these volumes to the observed flow volumes.

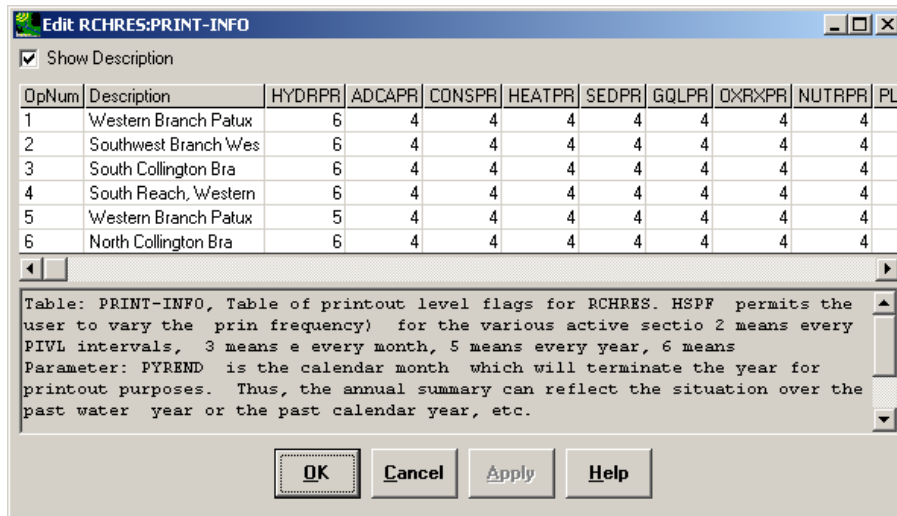
4. Click  (Input Data Editor).
5. **Double click** RCHRES → GENERAL → PRINT-INFO.



**Note:** In the “PRINT-INFO” screen, you can specify which output will be printed to the output file (*man\_cal.out*). You can also specify the print frequency for each reach and constituent. We want to look at the annual total simulated volumes for Reach 5. Since we are modeling only hydrology in this exercise, we need to specify the print frequency for only the column “HYDRPR.”

- In the cell that corresponds to the column “HYDRPR” and Reach 5 (Western Branch Patuxent), change the value to “5.” Change the rest of the values in the “HYDRPR” column to “6.”

**Note:** A value of 5 means that the total flow volumes for Reach 5 will be printed for each year. The total volumes for the other reaches will not be printed to the output file. Your screen should look like the following:



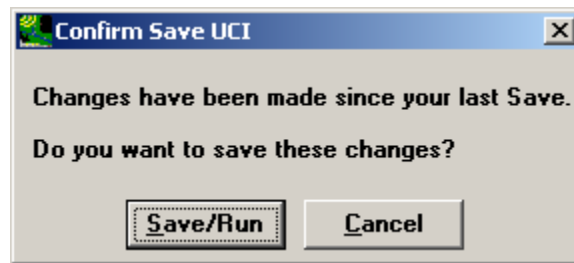
- Scroll to the right until you see the “PYREND” column. Click in the first cell in this

column. Change the value to “12” and **double click** the column heading to copy the values to the rest of the column.

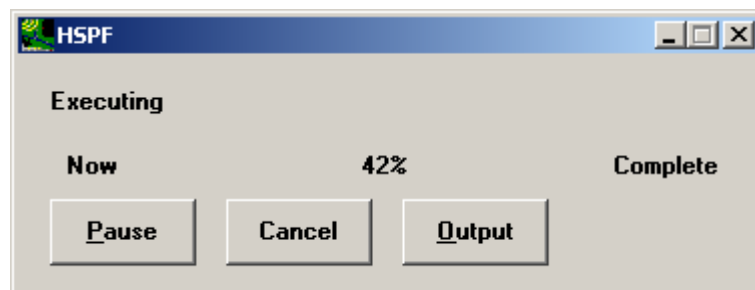
**Note:** By assigning “PYREND” a value of “12,” we are specifying that the year will end in December. In other words, the total flow will be printed each year for January 1 to December 31. If you specified “10” as the value for “PYREND,” the total flow for November 1 to October 31 of the next year would be printed in the output file.


8. Click APPLY.
9. Click OK.
10. Click CLOSE.

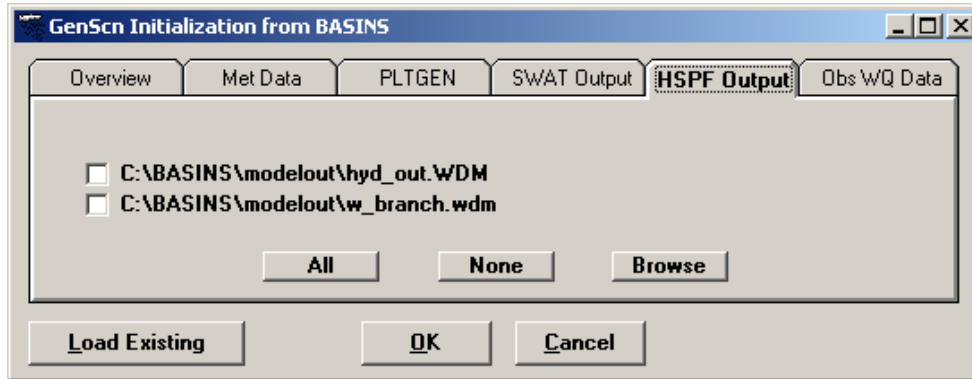
11. Click  (Run HSPF).




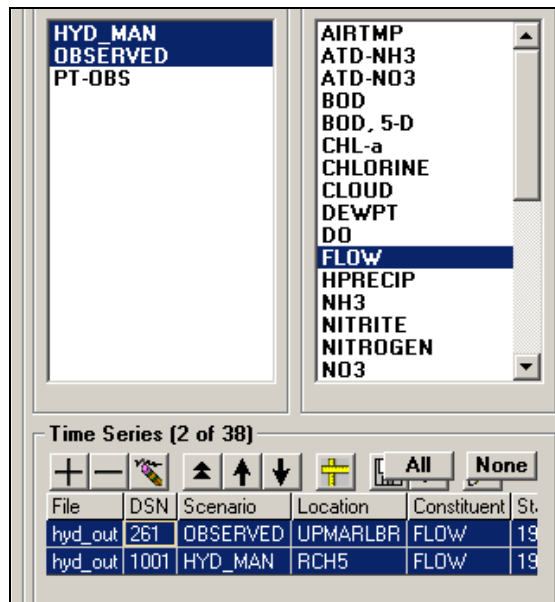
12. Click SAVE/RUN. The following window will appear, indicating that HSPF is executing.




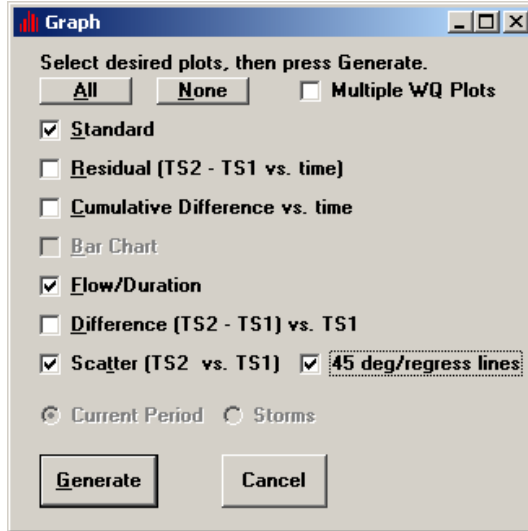
13. Click  (View Output through GENSCN).
14. Click the “HSPF Output” tab.



15. Check the box beside “c:\BASINS\modelout\hyd\_out.WDM” and click OK. The GenScn window will open.
16. In the “Scenarios” frame, select “HYD\_MAN” and “OBSERVED.”
17. In the “Constituents” frame, select “FLOW.”
18. Click  (Add to Time-Series List).
19. In the “Time Series” frame, select the “hyd\_man” and “observed” time series by holding the shift key while selecting them. Your screen should look like this:



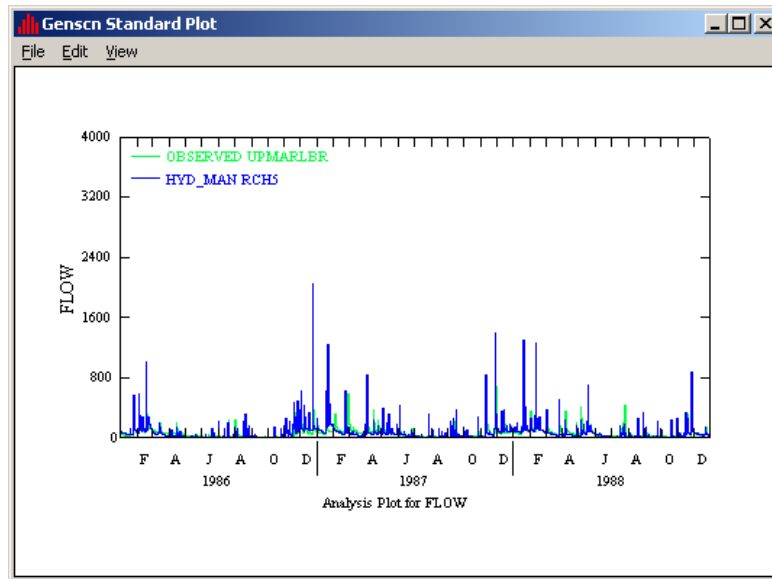
20. Click  (Generate Graphs).
21. Check the boxes beside “Standard,” “Flow/Duration,” “Scatter (TS2 vs. TS1)” and “45 deg/regress lines.”



22. Click GENERATE.

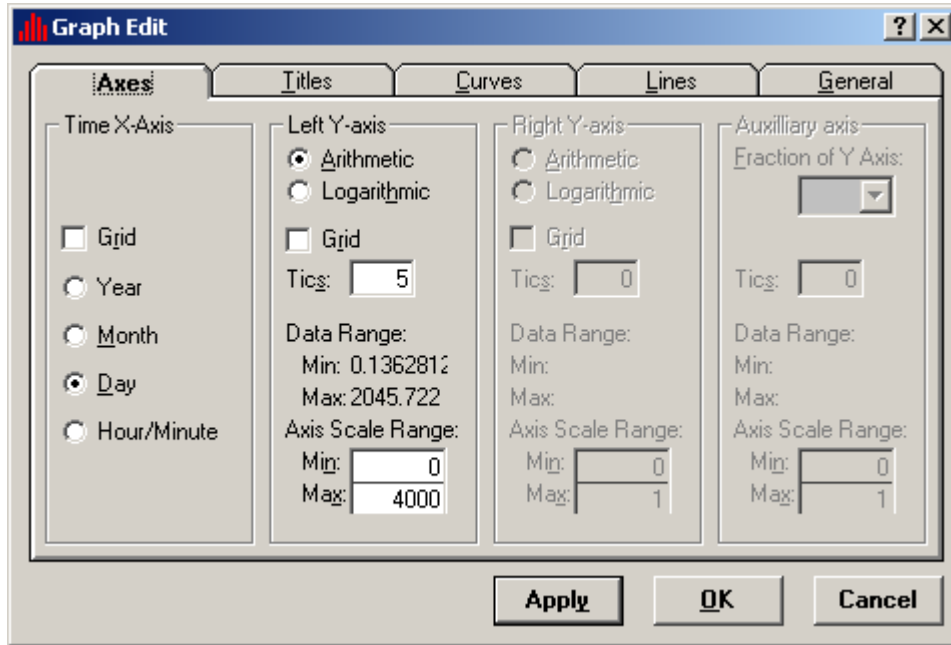
**Note:** When you click GENERATE, three plots will appear. The “Scatter” plot will be in front and the “Standard” (flow) plot will be in back.

23. Click on the “Genscn Standard Plot” window.

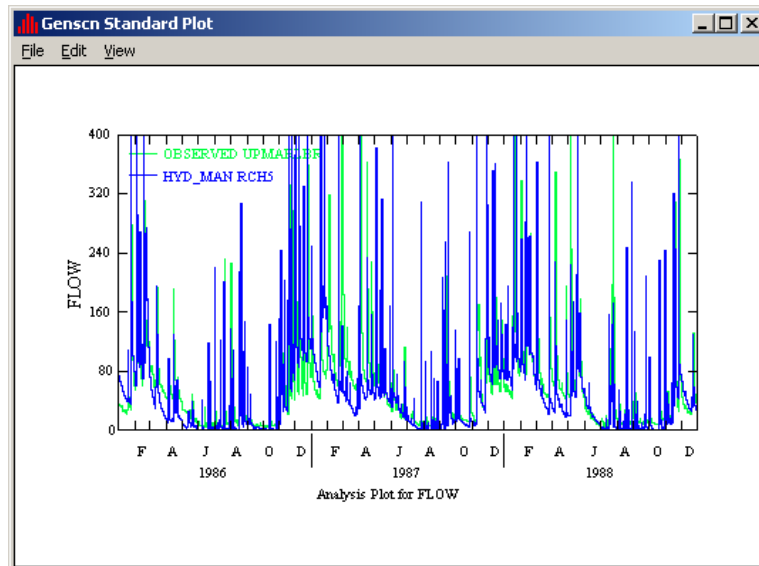


Notice the difference between the observed (OBSERVED UPMARLBR) and simulated (HYD\_MAN RCH5) flow data. To look more closely at the difference, we will look at a smaller range of flow values.

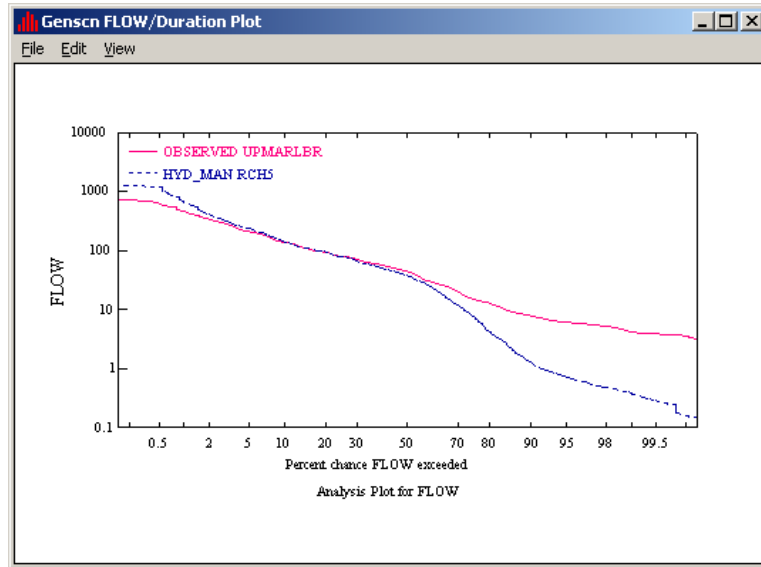
24. Move your cursor over the “FLOW” axis and **double click**. The following window will appear:



25. Make sure the “Axes” tab is selected. In the “Left Y-axis” frame under the “Axis Scale Range,” change the “Max” to “400.”
26. Click APPLY.
27. Click OK. Your plot should look like the following:

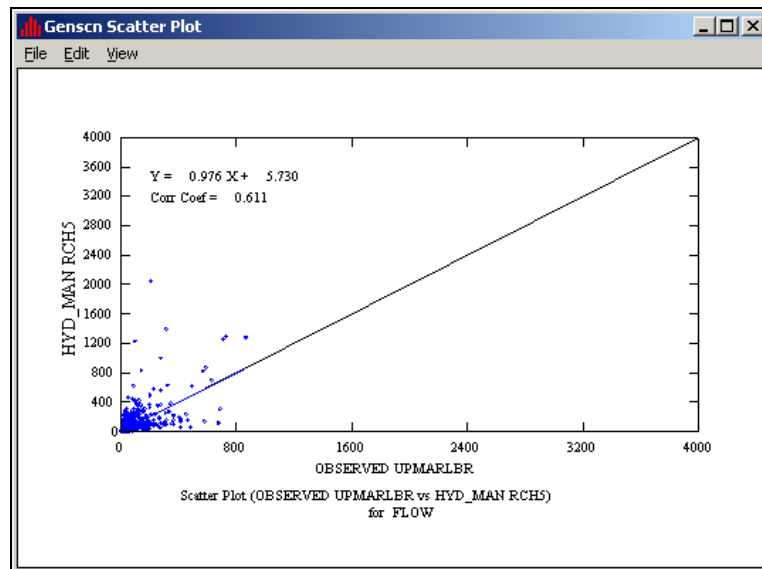


28. Close the “Genscn Standard Plot” window.
29. Click on the “Genscn FLOW/Duration Plot” window.



**Note:** This plot is a cumulative frequency plot. It shows how well the two series correlate in frequency. For each frequency in the range from 0 to 100 percent (X-axis), the flow that will be exceeded that percent of the time is plotted on the Y-axis. Ideally, the two curves should be very similar. Notice that the curves don't match well at the tails - high flow points (over 100 cfs) and low flow points (below 10 cfs).

- 30. Close the “Genscn FLOW/Duration Plot” window.
- 31. Click on the “Genscn Scatter Plot” window. This plot shows the simulated flow plotted against the observed flow. This graph is a good indicator as to how well the model is calibrated. The closer the data comes to falling on a 45° angle line, the better the two data sets match.



32. Close the “Genscn Scatter Plot” window.
33. Close GenScn. Do not save changes.

In the next section, we will begin the calibration process. We will adjust the values of some parameters and ascertain the effects by re-running the model and viewing the results.

## B. Total Runoff Volume Error – LZSN and UZSN

The best way to begin the hydrology calibration process is to examine the total runoff volume error. This type of analysis should be performed for the following time periods:

- Annual
- Seasonal
- Monthly
- Storm periods

You can compute the total runoff volume error for a specific time period by estimating the total volume of water passing through a reach according to the gage data (observed flow) and comparing it to the output volume simulated by the WinHSPF model (simulated flow).

$$\text{Volume} = \Sigma Q \cdot \Delta t$$

Once the simulated and observed volumes have been calculated and compared, you can adjust the values of calibration parameters until the total annual simulated volumes are very close to the total annual observed volumes. Losses in the watershed can be accounted for by quantifying flow diversions, evapotranspiration losses, and losses due to deep percolation. For this model, we will assume that we have accounted for all flow diversions and that losses due to deep percolation are negligible. We will therefore assume that all losses are due to evapotranspiration and adjust parameters that are associated with evapotranspiration.

**LZSN** (lower zone storage nominal) is related to precipitation and soil characteristics in the watershed. Increasing the value of LZSN increases the amount of water stored in the lower zone and therefore, increases the opportunity for evapotranspiration. This decreases flow rates by providing greater opportunity for evapotranspiration. Decreasing the value of LZSN increases flow rates in the reach.

**UZSN** (upper zone storage nominal) is related to land surface characteristics, topography, and LZSN. This parameter can change over the course of a growing season. Increasing UZSN increases the amount of water retained in the upper zone and available for evapotranspiration, allowing less overland flow. Some suggestions for UZSN are (*BASINS Technical Note 6*):



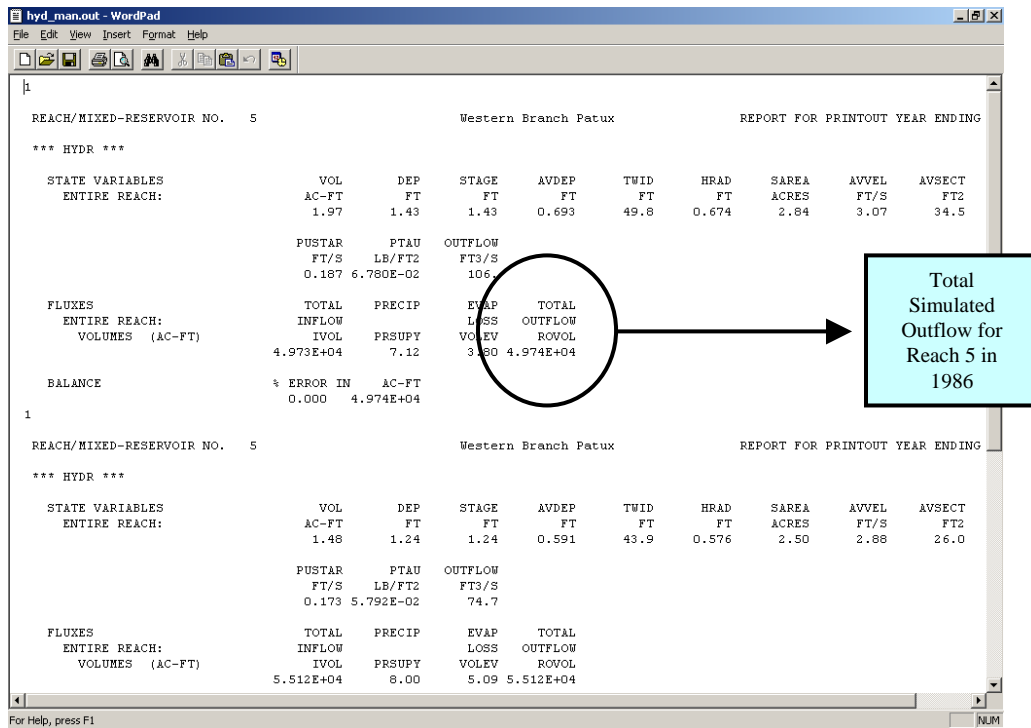
- 0.06\*LZSN – steep slopes and limited vegetation
- 0.08\*LZSN – moderate slopes and vegetation
- 0.14\*LZSN – mild slopes and heavy forest cover

Other parameters that may impact the error in total runoff are FOREST, PETMAX, PETMIN, and DEEPPFR. The following section is designed to illustrate how changes in LZSN and UZSN affect the simulated stream flow hydrograph in WinHSPF.

Before we begin calibration, we will look at the output file, compare the total annual simulated flow volumes to the total annual observed flow volumes, and determine whether our calibration efforts should focus on increasing or decreasing the total annual simulated flow volume.

**Annual Total Runoff Volume Error**

1. Open Windows Explorer or My Computer (do not close WinHSPF).
2. Navigate to *c:\basins\modelout\Man\_Cal\* and **double click** “*hyd\_man.out.*” Select “WordPad” and click OK if asked with which program you would like to open the file. The following window will open:



This file contains information for inflow and outflow volumes, precipitation, evaporation losses, and other hydraulic characteristics.

As mentioned earlier, the best way to begin the calibration process is to look at the annual total runoff volume error. In the following steps, we will compare the total annual simulated


flow volumes to the total annual observed flow volumes. The total annual simulated flow volumes (acre-ft) can be found in the output file *hyd\_man.out* (shown above). They are listed under the heading “TOTAL OUTFLOW ROVOL.” The project \*.wdm file (*hyd\_out.wdm*) contains the daily observed flow data (cfs) for Reach 5. These data must be converted to total annual flow volumes. In order to save time, this has already been done. For conversion details, see Appendix C.

The following table shows the comparison of observed and simulated annual flow volumes (acre-ft):

Date	Simulated Outflow	Observed Outflow	Percent Difference
1986	49,740	40,632	22.42
1987	55,120	53,264	3.48
1988	47,420	49,400	-4.01
<b>Total</b>	152,280	143,296	6.27

The error in total volume for the three-year time period is relatively good (within 10%). We will adjust some parameters in order to bring the two values even closer. Since we are over predicting flow volumes, we want to increase losses in the watershed. We will do this by increasing the evapotranspiration loss. Close WordPad when you are done.



3. Click  (Data Editor).
4. **Double click** “PERLND,” then “PWATER,” and then “PWAT-PARM2.”
5. Click in the first cell in the column “LZSN” and enter “14.” **Double click** the column heading to fill in the values for the rest of the column.

**Note:** According to *BASINS Technical Note 6*, the value of possible ranges for LZSN is 2 to 15 inches. We are entering “14,” a number that is unrealistic for the West Patuxent watershed, to illustrate how changing the value of LZSN will affect the total runoff volumes.

**Note:** In normal modeling situations, you should vary the parameter as appropriate by land use. For simplification purposes, we are using the same LZSN value for all land uses, but this is not appropriate practice in actual model application.

OpNum	Description	FOREST	LZSN	INFILT	LSUR	SLSUR	KVARY	AGWRC
101	Forest Land	0	14	0.25	300	0.0351	0	0.96
102	Urban or Built-up La	0	14	0.25	350	0.0321	0	0.96
103	Agricultural Land	0	14	0.25	350	0.0324	0	0.96
104	Barren Land	0	14	0.25	350	0.03	0	0.96
105	Wetlands	0	14	0.25	500	0.01	0	0.96


6. Click APPLY.

7. Click OK.

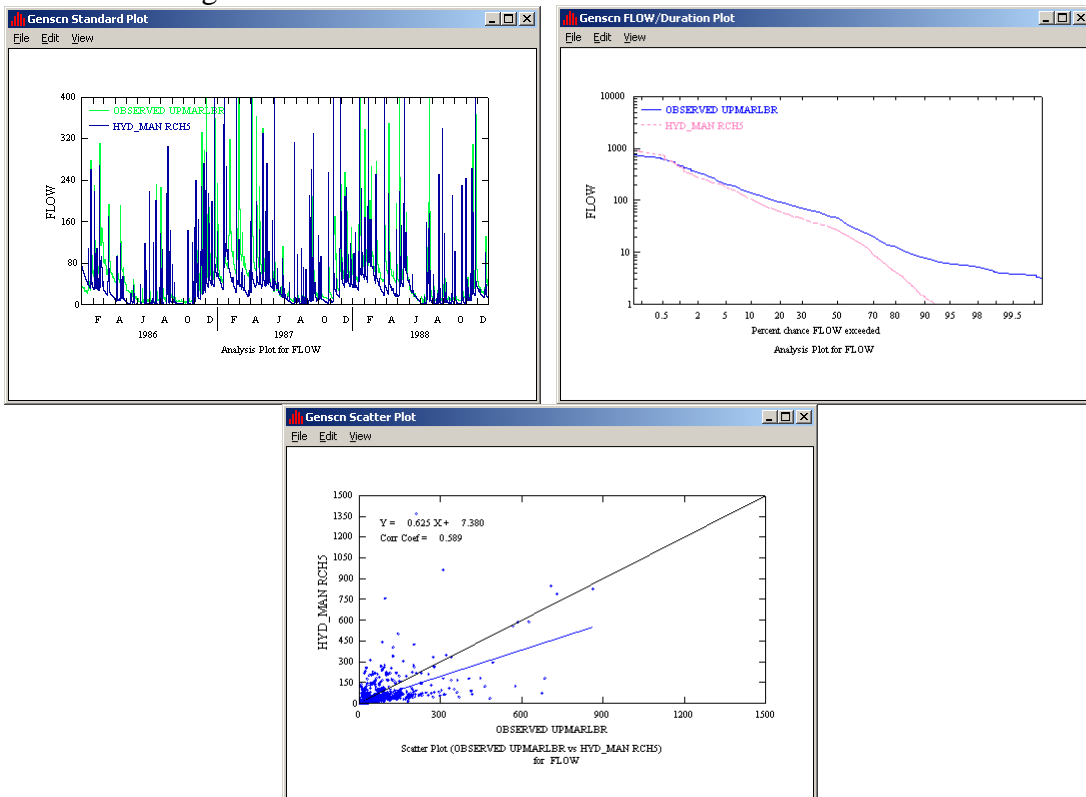
8. Click CLOSE.

9. Click  (Run).

10. Click SAVE/RUN.

11. Click  (View Output through GENSCN).




12. Follow steps 16-33 in **Section A** to look at the output. Your plots should look like the following:



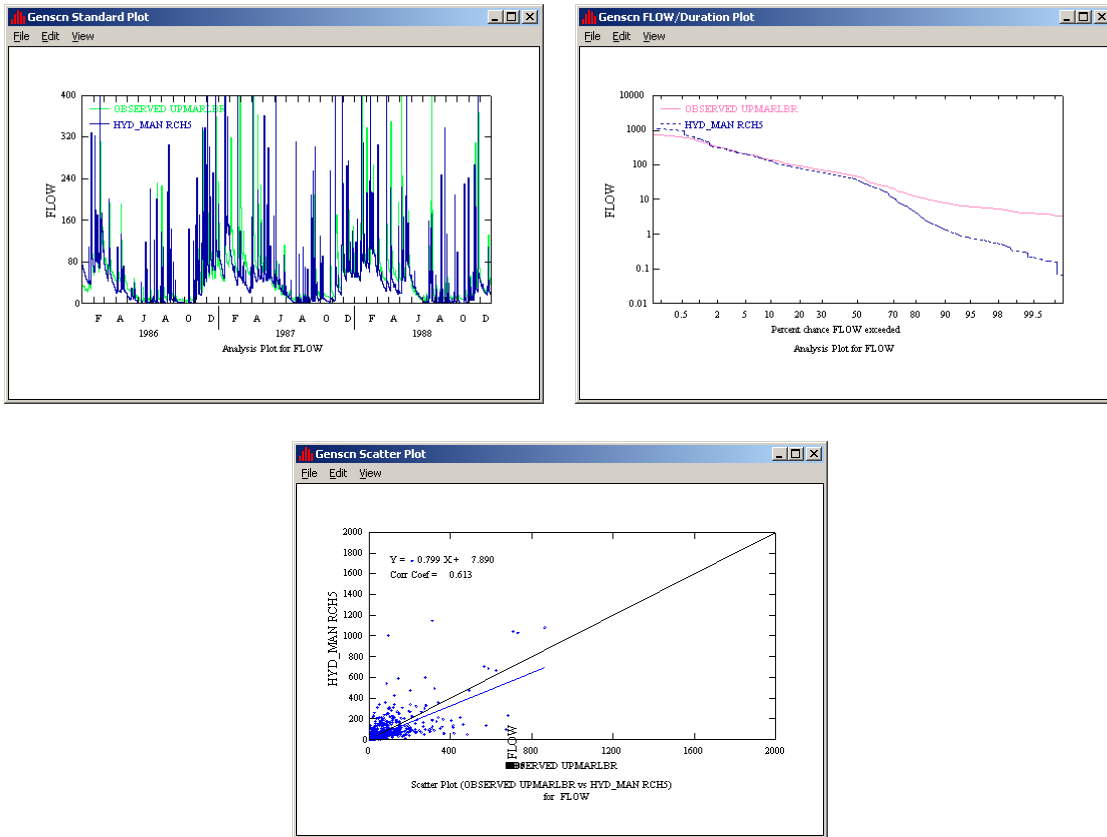
13. Close all of the plot windows.
14. Close the “Generate Plots” window.
15. Close GenScn. Do not save changes.
16. Open “Windows Explorer” or “My Computer.”
17. Navigate to *c:\basins\modelout\Man\_Cal\* and **double click** “*hyd\_man.out.*” Look at the modified annual flows. The updated comparison of annual flow volumes (acre-ft) is as follows:

Date	Simulated Outflow	Observed Outflow	Percent Difference
1986	29,920	40,632	-26.36
1987	40,050	53,264	-24.81
1988	35,680	49,400	-27.77
<b>Total</b>	105,650	143,296	-26.27

Overall, there is a 26.27% difference between annual simulated and observed flow volumes. Before we adjusted the value of LZSN, the simulated flow was too high; now it is too low. This means we increased the value of LZSN too much. We will decrease the value.

18. Click  (Data Editor).
19. **Double click** PERLND, PWATER, and then PWAT – PARM 2 (PERLND → PWATER → PWAT-PARM 2).
20. Change each value in the “LZSN” column to “5.”
21. Click APPLY.
22. Click OK.
23. Click CLOSE.
24. Click  (Run).
25. Click SAVE/RUN.
26. Click  (View Output through GENSCN).
27. Follow steps 16-33 in **Section A** to view the output in GenScn. The GenScn plots

should look like the following:



If you wish, you can open and view the output file (*hyd\_man.out*). The updated comparison of annual flow volumes(acre-ft) is as follows:


Date	Simulated Outflow	Observed Outflow	Percent Difference
1986	46,720	40,632	14.98
1987	51,760	53,264	-2.82
1988	44,640	49,400	-9.64
<b>Total</b>	<b>143,120</b>	<b>143,296</b>	<b>-0.12</b>

The overall total runoff volume error is 0.12%. This is very good, so we will move on to the seasonal volume error. We will look at the winter (December – February) water volumes and summer (June – August) water volumes.

**Seasonal Statistics**

Before we adjust any parameter values, we will look at the current seasonal statistics. In order to look at the statistics for the summer months and winter months, we need to change the output print frequency to “months.”

28. In the WinHSPF Data Editor window, **double click** RCHRES → GENERAL → PRINT-INFO.

29. In the “HYDRPR” column, change the value that corresponds to Reach 5 to “4.” This specifies that we would like to see the monthly results for Reach 5 in the output file (see parameter definition near the bottom of the Data Editor window). Leave all other values at 6.
30. Click APPLY.
31. Click OK.
32. Click CLOSE.
33. Click  (Run).
34. Using My Computer or Windows Explorer, open “*hyd\_man.out*.” Scroll through the file. Notice that the file includes both total monthly volumes and total annual volumes.

```

1
REACH/MIXED-RESERVOIR NO. 5                               Western Branch Patux                               REPORT FOR MONTH
*** HYDR ***
STATE VARIABLES
ENTIRE REACH:      VOL      DEP      STAGE      AVDEP      TWID      HRAD      SAREA      AVVEL      AVSECT
                   AC-FT      FT       FT         FT         FT        FT        ACRES      FT/S       FT2
                   1.56      1.27     1.27      0.607      45.0      0.591     2.57      2.90      27.3

                   PUSTAR      PTAU      OUTFLOW
                   FT/S       LB/FT2     FT3/S
                   0.175 5.941E-02  79.3

FLUXES
ENTIRE REACH:      TOTAL      PRECIP      EVAP      TOTAL
VOLUMES (AC-FT)  INFLOW     IVOL        PRSUPY    LOSS      OUTFLOW
                   4.851E+03  0.475      0.133 4.855E+03
                   VOLEV      ROVOL

BALANCE
% ERROR IN AC-FT
0.000 4.856E+03
1
REACH/MIXED-RESERVOIR NO. 5                               Western Branch Patux                               REPORT FOR MONTH
*** HYDR ***
STATE VARIABLES
ENTIRE REACH:      VOL      DEP      STAGE      AVDEP      TWID      HRAD      SAREA      AVVEL      AVSECT
                   AC-FT      FT       FT         FT         FT        FT        ACRES      FT/S       FT2
                   1.78      1.36     1.36      0.649      48.2      0.632     2.75      2.96      31.3

                   PUSTAR      PTAU      OUTFLOW
                   FT/S       LB/FT2     FT3/S
                   0.181 6.361E-02  92.7
    
```

In previous steps, we looked at the annual volume error and adjusted the value of LZSN so that the simulated flow volumes would more closely resemble the observed flow volumes. We will now look at the winter and summer flow volumes (acre-ft). The following table shows the seasonal statistics:

Year	Month	Sim. Flow	Obs. Flow	% Diff.	Month	Sim. Flow	Obs. Flow	% Diff.
1986	January	4,855			June	607		
	February	8,719			July	1,959		
					August	2,785		
	<b>Winter:</b>	13,574	10,181	33.33	<b>Summer:</b>	5,351	5,188	3.14
1987	December	14,210			June	3,114		
	January	10,990			July	1,197		
	February	4,802			August	921		
	<b>Winter:</b>	30,002	25,517	17.58	<b>Summer:</b>	5,232	4,273	22.44
1988	December	6,169			June	1,515		
	January	7,838			July	1,791		
	February	8,914			August	1,603		
	<b>Winter:</b>	22,921	22,076	3.83	<b>Summer:</b>	4,909	5,428	-9.56
	<b>Total Winter:</b>	66,497	57,775	15.10	<b>Total Summer:</b>	15,492	14,889	4.05

Notice that there is a 4.05% difference between the total observed and total simulated flow volumes for summer, but there is a 15.10% difference for winter flows.

In general, the upper zone storage is near capacity in the winter and there is little evapotranspiration occurring so the value of the nominal storage (UZSN) has a minimal effect in winter, but a much larger effect during summer when losses from the upper zone storage are at or near the potential due to high evapotranspiration rates. In the case of this exercise, the summer flows are almost entirely dominated by base flow, so the upper zone storage (which is controlled by UZSN) is empty the majority of the time, even during summer storm events. To move forward with this exercise, we will raise UZSN for the non-agricultural land uses.

Note that because VUZFG is 1 for PERLND 103 (agricultural land), the values of UZSN actually being used for agricultural land are in the table MON-UZSN. Thus changing the values of UZSN in the table PWAT-PARM4 affects only the non-agricultural land uses.



35. Click the “Data Input Manager” button,
36. **Double click** PERLND → PWATER → PWAT-PARM4.
37. Change all the values in the “UZSN” column to “1.8.”
38. Click APPLY.
39. Click OK.
40. Click CLOSE.

41. Click  (Run).

The winter and summer statistics is as follows:

Year	Month	Sim. Flow	Obs. Flow	% Diff.	Month	Sim. Flow	Obs. Flow	% Diff.
1986	January	4,633			June	608		
	February	7,322			July	1,960		
					August	2,782		
	<b>Winter:</b>	11,955	10,181	17.42	<b>Summer:</b>	5,350	5,188	3.12
1987	December	12,460			June	3,044		
	January	10,370			July	1,195		
	February	4,851			August	928		
	<b>Winter:</b>	27,681	25,517	8.48	<b>Summer:</b>	5,167	4,273	20.92
1988	December	5,640			June	1,474		
	January	7,253			July	1,787		
	February	8,449			August	1,605		
	<b>Winter:</b>	21,342	22,076	-3.32	<b>Summer:</b>	4,866	5,428	-10.35
<b>Total Winter:</b>	60,978	57,775	5.54	<b>Total Summer:</b>	15,383	14,889	3.32	

The total summer difference has only changed slightly (from 4.05% to 3.32%), but the total winter difference is down to 5.54 %. This percent difference is good enough for our purposes. In our simulation, we increased evapotranspiration significantly for the winter months. Since this will surely have an effect on the annual statistics, we will look at the total annual flow volumes (acre-ft) for this simulation. They are as follows:

Date	Simulated Outflow	Observed Outflow	Percent Difference
1986	42,620	40,632	4.89
1987	49,790	53,264	-6.52
1988	42,990	49,400	-12.98
<b>Total</b>	135,400	143,296	-5.51

This is acceptable, since the total percent difference is still lower than 10%.

The next step is to complete statistics for each month and adjust parameters as needed. It is possible to have monthly values for many of the parameters. After the monthly statistics, it is best to look at the storm statistics. You can complete the monthly comparison and the storm comparison by using the method outlined above. In order to save time, we will move on to high and low flows.




### C. Soil Moisture Storage and Actual Evapotranspiration (High and Low Flows) – INFILT and LZETP


Soil moisture storage is important because it controls the division between surface and subsurface flow (*Hydrologic Journal*) and affects the timing of the runoff and statistics.

**INFILT** is an index to mean soil infiltration rate. It is a function of soil characteristics and controls how much of the water from precipitation will become surface flow, subsurface flow, and a portion of the storage components. Increasing the value of INFILT produces more water in the lower zone and therefore, generally results in higher base flow in the streams. Low values of INFILT will produce more upper zone and interflow storage water, resulting in greater direct overland flow (if the upper zone is saturated) and interflow (*BASINS Technical Note 6*). INFILT is closely related to LZSN, UZSN, AGWRC, IRC, and KVARY, since the value of INFILT will determine the allocation of water in the soil profile.

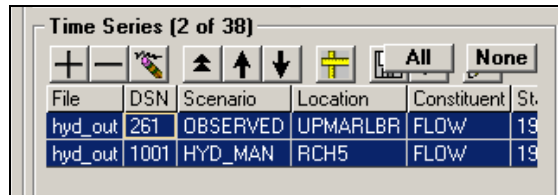
**LZETP** (index to lower zone evapotranspiration) is a coefficient (unitless) used to define the opportunity for evapotranspiration. It affects the amount of evapotranspiration from the lower zone, which represents the primary soil moisture storage and root zone of the soil profile. This parameter behaves like a crop coefficient (*BASINS Technical Note 6*).

We are going to view the output from the last run in GenScn. Look at the peak flows and base flows and try to determine whether there are any patterns.

1. Make sure “*hyd\_man.uci*” is active in WinHSPF
2. Click the “View Output Through GenScn” button, 
3. In the “Scenarios” frame, select “HYD\_MAN” and “OBSERVED.”
4. In the “Constituents” frame, select “FLOW.”


5. Click  (Add to Time-Series List).

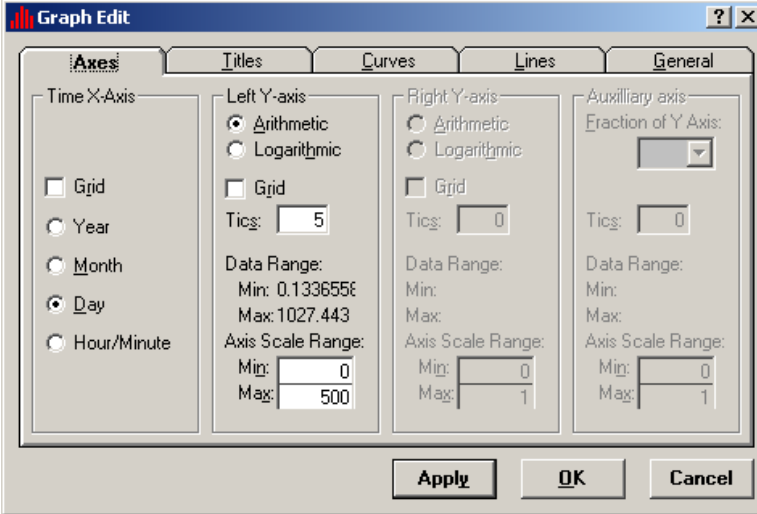
6. In the “Time Series” frame, select the “*hyd\_man*” and “observed” time series by holding the shift key while selecting them.



7. In order to see patterns more clearly, we will look at the flow plot for only one year. In the “Dates” frame, change the “Start” date to “01-01-1988.”

Dates					
Reset	Start		End	TStep,Units	
Current	1988	1	1	to	1988 12 31
Common	1986	1	1	to	1988 12 31
					Native

8. Click  (Generate Graphs).
9. Make sure the box beside “Standard” is checked and click GENERATE. Double click somewhere on the “FLOW” axis.
10. In the “Left Y-axis” frame, change the “Max:” value to “500.” Click APPLY and then OK.



**Graph Edit**

**Axes**

Time X-Axis

Grid

Year

Month

Day

Hour/Minute

**Left Y-axis**

Arithmetic

Logarithmic

Grid

Tics: 5

Data Range:

Min: 0.133655E

Max: 1027.443

Axis Scale Range:

Min: 0

Max: 500

**Right Y-axis**

Arithmetic

Logarithmic

Grid

Tics: 0

Data Range:

Min:

Max:

Axis Scale Range:

Min: 0

Max: 1

**Auxiliary axis**

Fraction of Y Axis:

Tics: 0

Data Range:

Min:

Max:

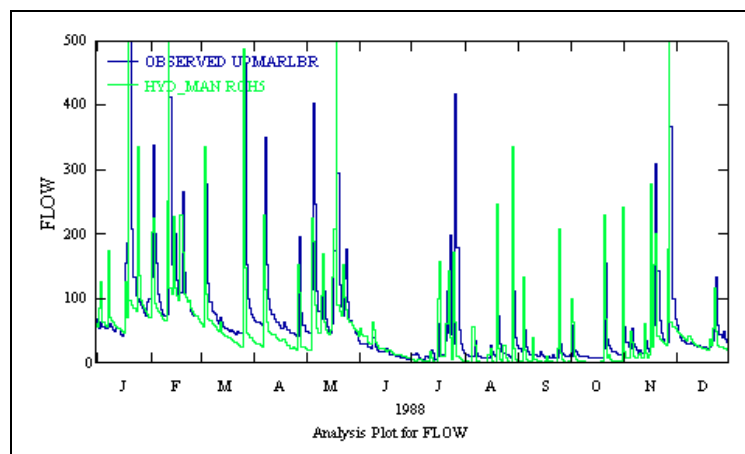
Axis Scale Range:

Min: 0

Max: 1

Apply OK Cancel

The plot should look similar to the following:



The following table shows the simulated high and low flow volumes compared to the observed high and low flow volumes:

	Simulated	Observed	% Diff.
<b>Σ High Flows: (upper 10%)</b>	22566	29448	-23.37
<b>Σ Low Flows: (lower 50%)</b>	3229	10059	-67.90

Notice that the simulated base flow is consistently lower than the observed base flow. In order to help increase the base flow in our model, we need to allocate more interflow and groundwater and less surface runoff to stream flow. We will do this by increasing the value of “INFILT.”

- Close the plot windows and exit GenScn. Do not save changes.



- In WinHSPF, click (Data Editor).

- Double click** PERLND → PWATER → PWAT-PARM2. Change the values in the “INFILT” column to “0.5.”

- Click APPLY.

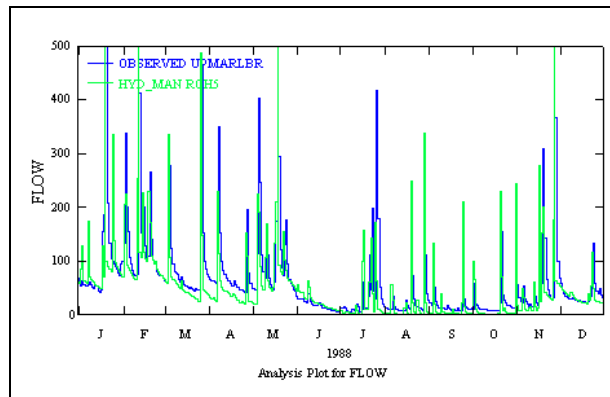
- Click OK.

- Click CLOSE to exit the “Input Data Editor.”



- Click (Run).

- After the model has finished executing, follow steps 2-11 (in this section) to view the output graphically. The flow plot should look like the following:



The following table shows the adjusted high and low flow volume comparison:

	Observed	Simulated	% Diff.
<b>Σ High Flows: (upper 10%)</b>	29448	32966	11.95
<b>Σ Low Flows: (lower 50%)</b>	10059	6353	-36.84

The “low flow” comparison improved (from  $-67.9\%$  to  $-36.84\%$ ). We still need to improve our low flow numbers, but we have already increased the value of INFILT to the maximum value recommended in *BASINS Technical Note 6*. In the next section, we will adjust other parameters in order to improve our high and low flow volume errors.



## D. Seasonal and Low Flows – KVAR Y and AGWRC

Seasonal and low flows are simulated by changing the volume of water flowing through the groundwater path and interflow paths in your model. Recall that adjusting INFILT value(s) will change the distribution of water that will flow through the upper zone and that this parameter value works with others (LZSN, UZSN, AGWRC, KVAR Y, IRC) to determine the allocation and timing of surface runoff, interflow, and groundwater contributing to stream flow. Seasonal flows can also be adjusted by changing the recession rate for flows entering the reach via groundwater paths.

**AGWRC** is the groundwater recession rate. It is the ratio of current groundwater discharge to that from 24 hours earlier when KVAR Y is zero.

**KVAR Y** is the groundwater recession flow parameter that describes non-linear groundwater recession rates. It is usually one of the last parameters adjusted and is used when the observed groundwater recession demonstrates a seasonal variability with a faster recession during wet periods and the opposite during dry periods. Users should begin with a KVAR Y value of 0.0 and then increase if there are seasonal variations.

Since our simulated base flow is still too low, we will increase the value of AGWRC.

1. Click  (Data Editor).
2. **Double click** PERLND → PWATER → PWAT-PARM2.
3. Change each value in the “AGWRC” column to “0.99.”
4. Click OK.
5. Click APPLY.
6. Click CLOSE.
7. Click  (Run).

The adjusted high/low flow volumes are as follows:

	Observed	Simulated	% Dif.
<b>Σ High Flows: (upper 10%)</b>	29448	31854	8.17
<b>Σ Low Flows: (lower 50%)</b>	10059	9893	-1.65

Since both the high and low flow percent differences are considerably better than before, and sufficient for our purposes, we will not adjust the value of KVAR. We will now look at the shape of our storm peak flows.

## E. Hydrograph Shape and Peak Flows – INTFW and IRC

Hydrograph shape is affected by the relative magnitudes of surface runoff and interflow among and within watersheds. The coefficients INTFW and IRC control the amount and timing of water that will enter the reach as interflow.

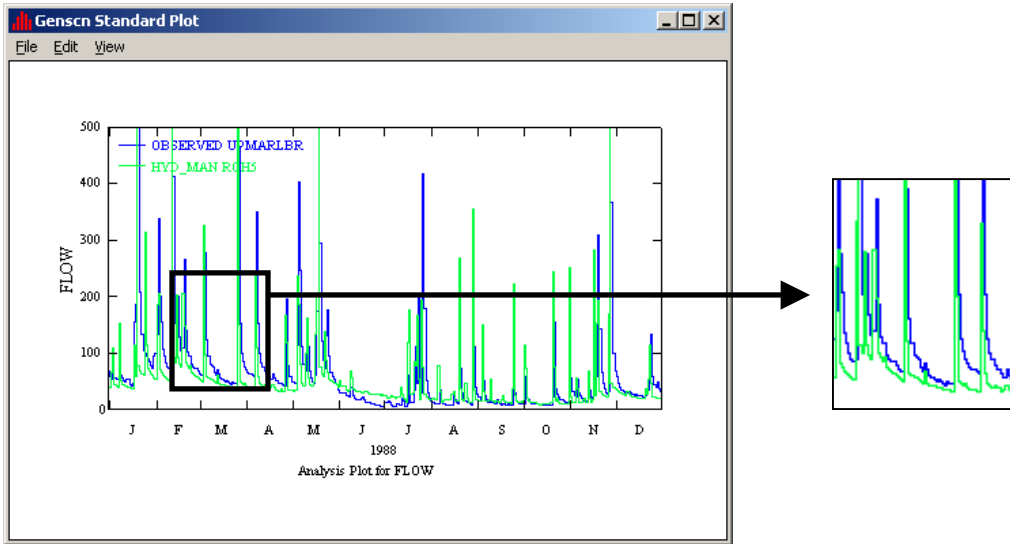
Channel cross-sections and the slope and distance of the overland flow plain are also important in hydrograph shape and peak flows in some watersheds. For watersheds in which the channel flow timing is 10 minutes or less, the overland flow parameters (LSUR, SLSUR, and NSUR) are important for hydrograph shape and peak flows. (*Hydrologic Journal*).

**INTFW** is the coefficient that determines how much water will enter the ground from detention storage and become interflow (instead of direct overland flow and upper zone storage). INTFW has an effect on the timing of runoff by controlling the division of water between interflow and surface processes. Increasing the value of INTFW increases the amount of interflow, decreases direct overland flow and thereby reduces the peak flows while maintaining the same volume. It alters the shape of the hydrograph by shifting and delaying the flow to later in time. Decreasing INTFW has the opposite affect (raises the peaks). Base flow is not affected by INTFW. Once storm volumes have been calibrated, INTFW can be used to raise or lower peaks to match the observed hydrograph (*BASINS Technical Note 6*).



**IRC** is the interflow recession coefficient. It is analogous to the groundwater recession parameter (AGWRC) and is the ratio of current daily interflow to the interflow discharge on the previous day (24 hours earlier). IRC affects the rate at which interflow is discharged from storage, so it affects the shape of the hydrograph by altering the “falling” phase (recession region) of the curve between the peak storm flow and baseflow. IRC can be adjusted based on whether simulated storm peaks recede faster / slower than observed after AGWRC has been calibrated (*BASINS Technical Note 6*).

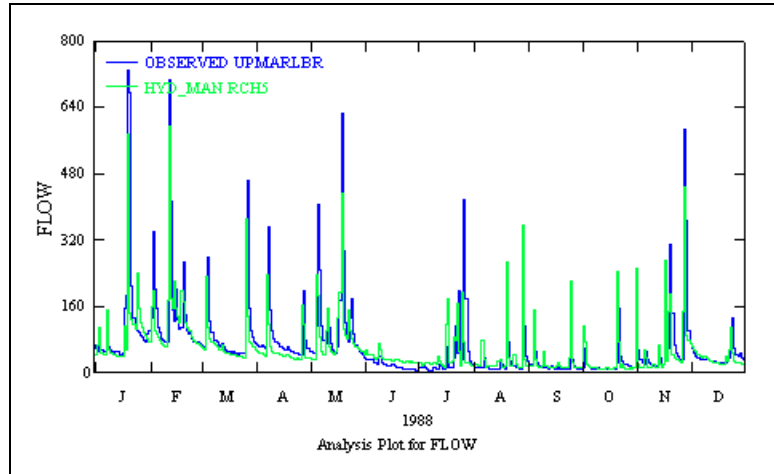
We are going to plot the results of the last simulation we ran. As you look at the plot, notice the shape of the peak flows.

1. Follow steps 2-11 in **Section C** to view the plot. Your flow graph should look similar to the following:



**Note:** Notice that the peak recession is occurring too quickly. We will increase the value of “INTFW” in order to slow down the recession rate and flatten the peaks a little.

2. Click  (Data Editor).
3. **Double click** PERLND → PWATER → PWAT-PARM4.
4. Click in the first cell of the column “INTFW.” Change the value to “3” and then **double click** the column heading to copy the values for the rest of the column.
5. Click APPLY.
6. Click OK.
7. Click CLOSE.
8. Click  (Run).
9. Follow steps 2-11 in **Section C** to view the results in GenScn. Your flow plot should look similar to the following:



**Note:** Notice that the peak recessions are occurring more gradually.

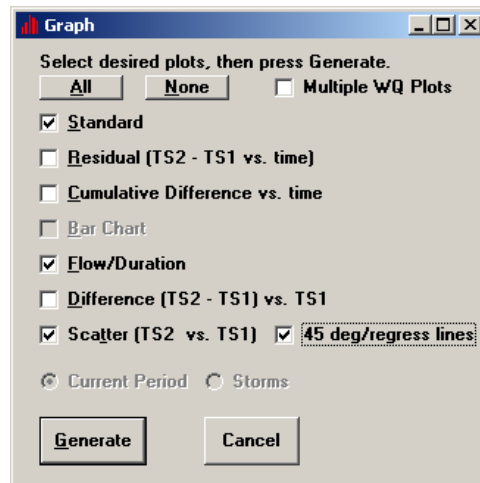
You can continue to change the values of various parameters to more finely calibrate the model. Keep in mind that this is a fairly rough calibration that was designed to illustrate the principles of calibration. In your own calibration efforts, it is important to perform statistics on the monthly and storm flow volumes (in addition to the annual and seasonal statistics), adjust parameter values in small increments, and take the time to make sure the parameter values truly represent your watershed.

We will look at the plots for the entire time period to see how our model has changed.

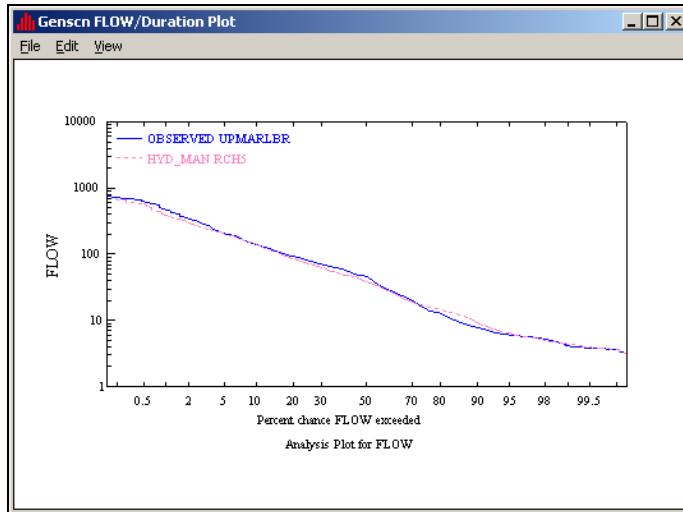
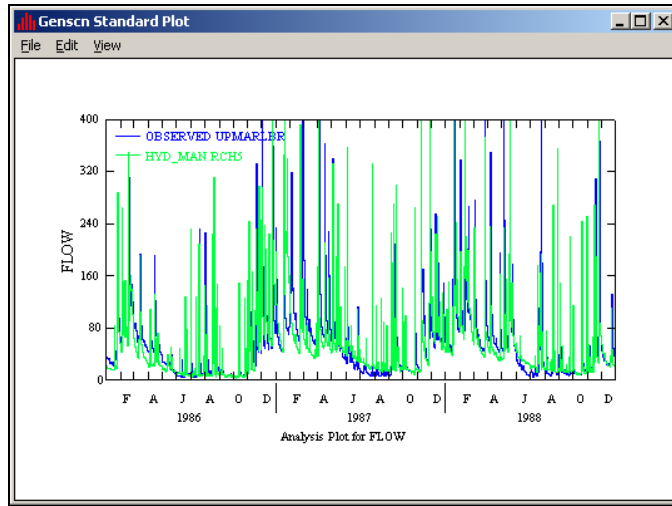
10. Close the plot window and return to the main window of GenScn. In the “Dates” frame, change the “Start” date to “01-01-1986.”

11. Click  (Generate Graphs).

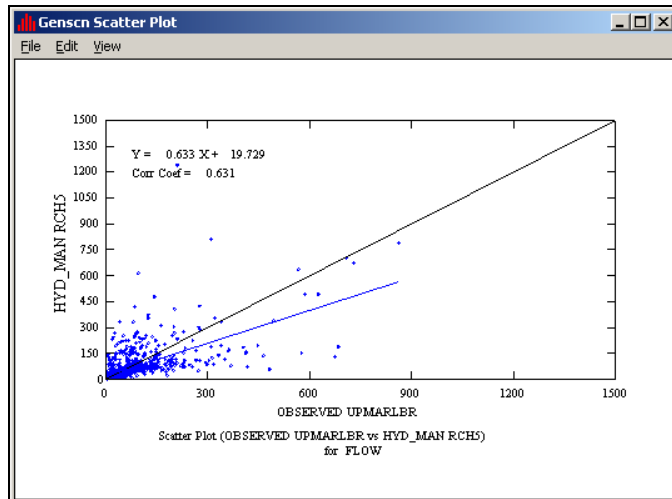
12. Check the boxes beside “Standard,” “Flow/Duration,” “Scatter (TS2 vs. TS1)” and “45 deg/regress lines.” Click GENERATE.



The plots should look like the following:



Notice that the two lines (simulated and observed) now line up very well.





The variability shown on this graph is due mostly to extreme points in our hydrograph. The model takes into account all points when producing the linear regression equation.

13. Exit GenScn.

### F. Additional Calibration Requirements

When calibrating hydrology, it is important to examine the overall water balance within each land segment. This effort involves displaying and analyzing model results for individual land uses for the following water balance components: rainfall, runoff (including surface runoff, interflow, and baseflow), evaporation losses (including potential, interception, upper zone, lower zone, baseflow, and active groundwater), and deep groundwater recharge/losses.

Although observed values are not available for each of the water balance components listed above, the average annual values must be consistent with expected values for the region, as impacted by the individual land use categories. This is a separate consistency, or reality, check with data independent of the modeling (except for precipitation) to insure that land use categories and overall water balance reflect local conditions.

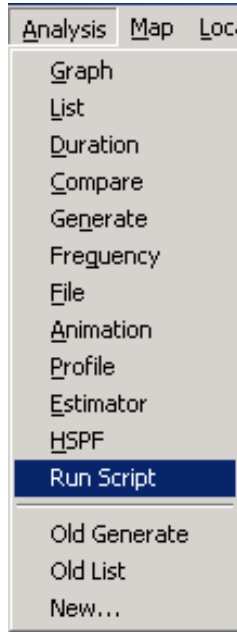
It is recommended that you create a table similar to the following for each land use when calibrating flow for your watershed. This table will help you compare the runoff and evaporation components among land uses and make sure that they are logical and consistent. This table is presented only as an example.

Water Balance Components for Agriculture, PERLND 101, in inches:

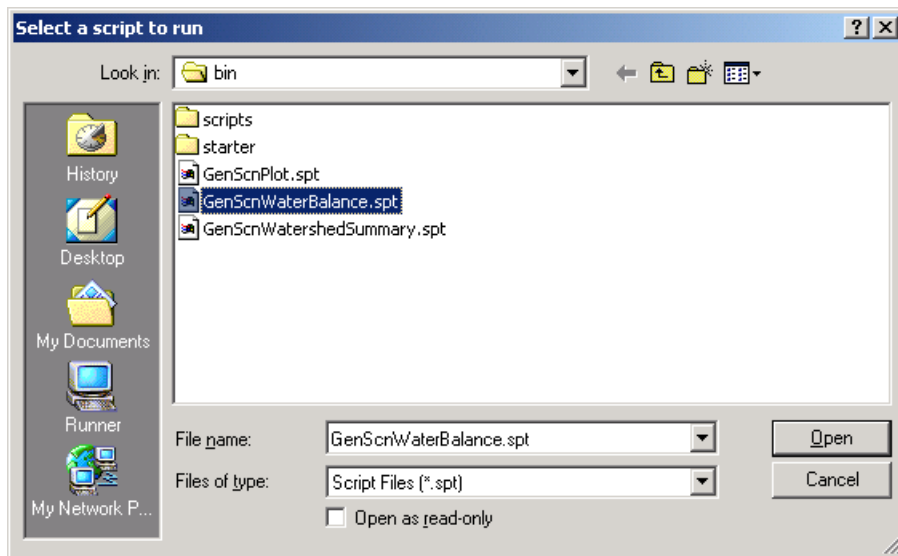
Date	1990	1991	1992	1993	1994	1995	Average
<b>Rainfall</b>	41.87	35.52	35.28	49.27	37.24	44.17	40.56
<b>Runoff</b>							
<b>Surface</b>	0.10	0.12	0.16	0.80	0.15	0.81	0.35
<b>Interflow</b>	1.94	1.71	1.89	6.88	2.25	3.98	3.11
<b>Baseflow</b>	9.70	8.33	8.92	14.92	8.65	10.82	10.22
<b>Total</b>	11.73	10.16	10.96	22.59	11.05	15.61	13.68
<b>Deep Groundwater</b>	0.00	0.00	0.00	0.00	0.00	0.00	0.00
<b>Evaporation</b>							
<b>Potential</b>	31.69	35.44	29.38	30.44	33.19	34.09	32.37
<b>Intercep St</b>	9.34	8.37	8.30	10.05	8.53	9.28	8.98
<b>Upper Zone</b>	7.59	5.94	4.29	9.34	6.32	8.17	6.94
<b>Lower Zone</b>	9.70	11.17	10.65	8.10	11.11	10.74	10.24
<b>Ground Water</b>	0.00	0.00	0.00	0.00	0.00	0.00	0.00
<b>Baseflow</b>	0.32	0.32	0.28	0.30	0.32	0.34	0.31
<b>Total</b>	26.94	25.80	23.52	27.78	26.27	28.53	26.47

GenScn has a built-in scripting capability to produce summary tables from HSPF output. In this portion of the exercise we will use the scripting capability to build a water balance component summary like the one above.

1. Make sure “*hyd\_man.uci*” is open in WinHSPF and click the “View Output Through GenScn” button.
2. From the **Analysis** menu, choose the option **Run Script**.

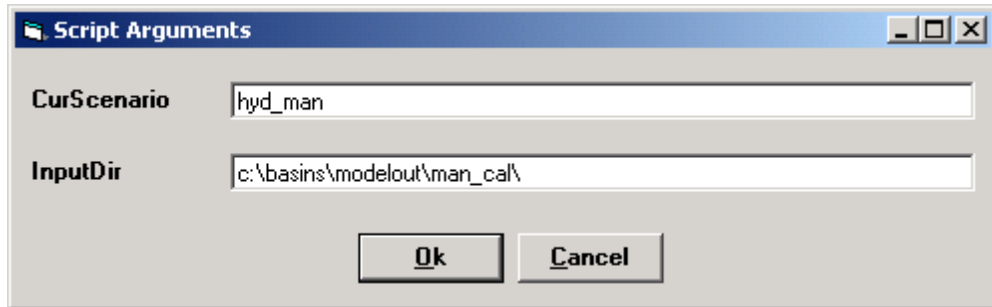


3. From the script selection window, go to *c:\BASINS\models\HSPF\bin* and select the script “GenScnWaterBalance.spt.” Click OPEN.

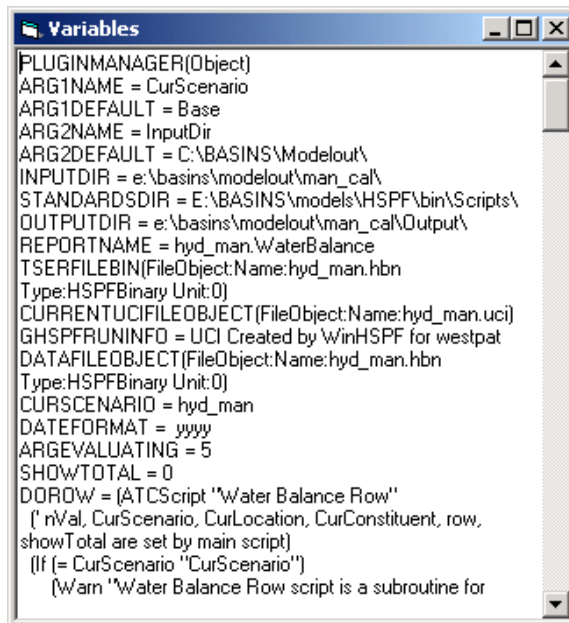


4. Type “*hyd\_man*” in the “CurScenario” (or current scenario) box, and specify the

*c:\BASINS\modelout\Man\_Cal\* folder as the input directory. Click OK.



- The script will begin to run. As it is running, a “Variables” window will appear, containing detailed information about the script. When the script has finished, this window may be closed.



- Exit GenScn.
- The script output can be viewed in a text editor. Navigate to *c:\BASINS\modelout\Man\_Cal\Output* (using My Computer or Windows Explorer), open the file “*hyd\_man.WaterBalance.txt*.” The output will look like the following:

hyd\_man.WaterBalance.txt - WordPad

File Edit View Insert Format Help

Courier New 10 Western B U A

Water Balance Report for Scenario [hyd\_man]  
 Run Made 2003-09-15 11:58  
 UCI Created by WinHSPF for westpat  
 (Units:Inches)

Water Balance for Forest Land

Date	1986	1987	1988	Aver
Rainfall	35.47	37.77	34.74	35.99
Runoff				
Surface	0.149	0.056	0.049	0.085
Interflow	0.917	1.445	1.192	1.185
Baseflow	2.689	5.252	4.634	4.192
Total	3.754	6.753	5.875	5.461
Deep Groundwater	0.0	0.0	0.0	0.0
Evaporation				
Potential	41.81	39.83	40.49	40.71
Intercep St	8.249	8.56	8.54	8.45
Upper Zone	6.394	10.4	8.526	8.438
Lower Zone	15.54	12.63	13.64	13.94
Ground Water	0.0	0.0	0.0	0.0
Baseflow	0.83	0.797	0.81	0.812
Total	31.01	32.38	31.52	31.64

For Help, press F1

**References:**

*BASINS Technical Note 6, Estimating Hydrology Parameters for NPSM/HSPF – DRAFT.*  
 September 15, 1999.

*Hydrologic Journal*, <http://www.hydrocomp.com/journal4.htm>. Hydrocomp, Inc.