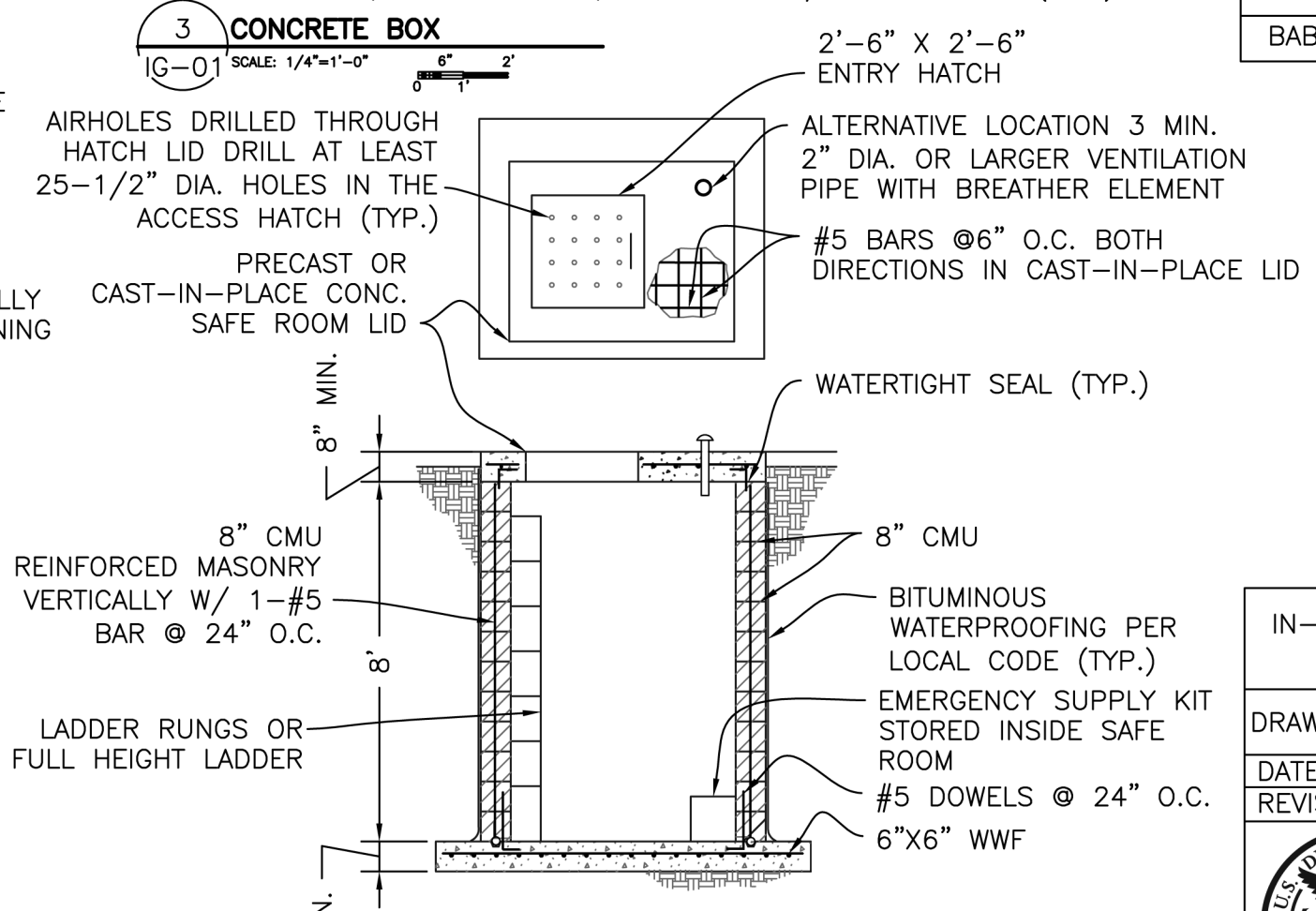
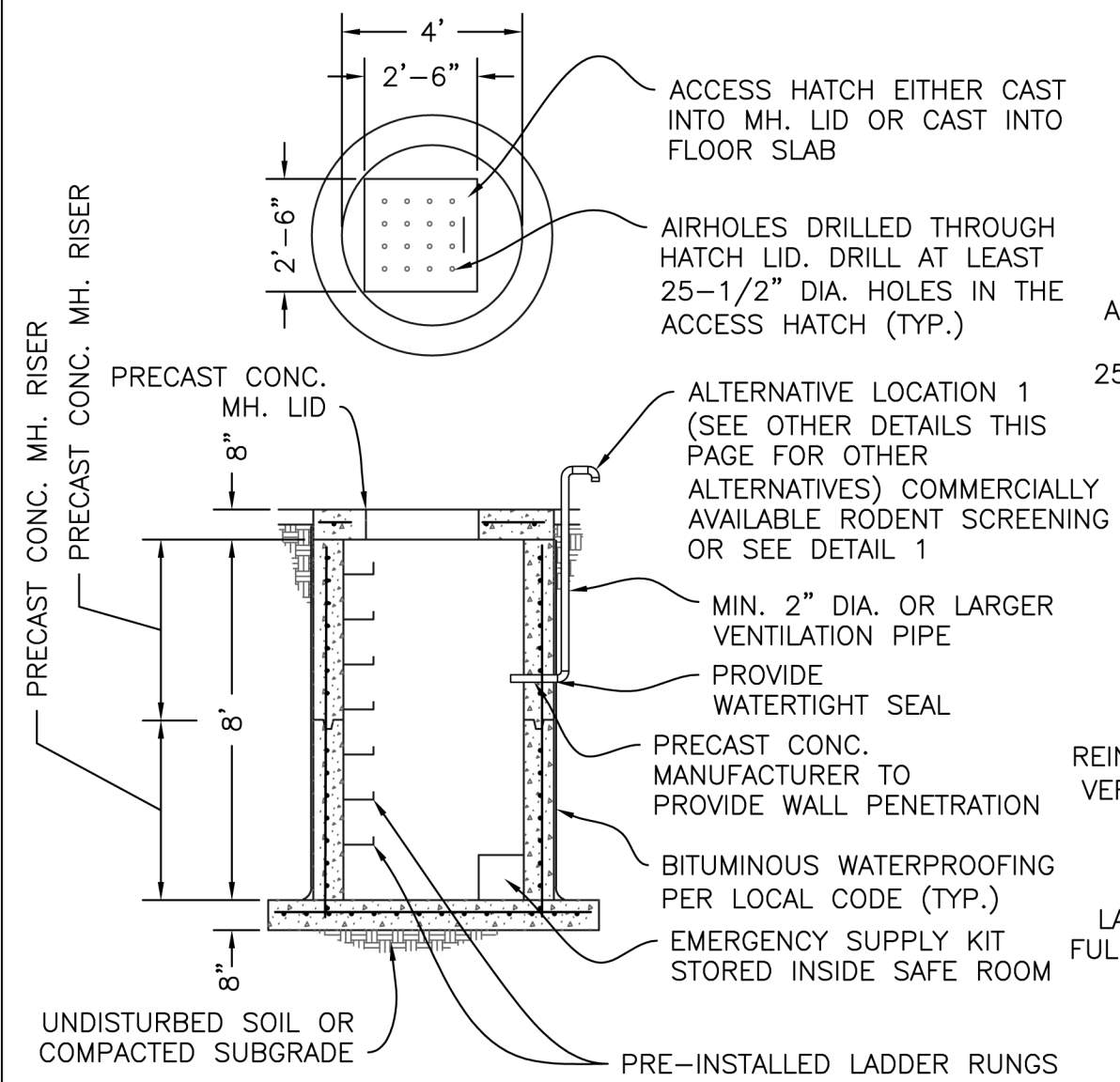


- NOTES:
1. BECAUSE NOT ALL CONTRACTORS ARE FAMILIAR WITH THE TYPE OF HATCH COVER SHOWN IN THESE DRAWINGS, THE NAMES OF SOME COMPANIES THAT MANUFACTURE HATCH COVERS HAVE BEEN INCLUDED IN THIS TABLE. THE LIST OF COMPANIES IS NOT, HOWEVER, EXHAUSTIVE. ADDITIONALLY, THIS LIST IS NOT INTENDED TO EXPRESS A PREFERENCE FOR THOSE MANUFACTURERS AND/OR THEIR PRODUCTS BY THE UNITED STATES GOVERNMENT NOR IS IT AN ENDORSEMENT OF THOSE MANUFACTURERS AND/OR THEIR PRODUCTS.
 2. SPACE REQUIRED INSIDE IN-GROUND SAFE ROOM IS MIN. 5 S.F./ PERSON.
 3. LADDERS INSTALLED SHOULD CONFORM TO THE REQUIREMENTS OF ICC-500.

HATCH COVER REFERENCE	
MANUFACTURER	MODEL NO.
ACUDOR	FA150
BILCO	J4AL
BABCOCK DAVIS	FB4700



CAUTION
 DO NOT INSTALL IN-GROUND SAFE ROOM IN AREAS OF EXPANSIVE CLAY OR HIGH WATER TABLE OR IN AREAS THAT ARE FLOOD-PRONE.

2 PRECAST CONCRETE MANHOLE
 IG-01 SCALE: 1/4"=1'-0" 6" 2'

4 MASONRY BOX
 IG-01 SCALE: 1/4"=1'-0" 6" 2'

IN-GROUND SAFE ROOM - SECTIONS AND DETAILS	
DRAWING NO: IG-01	SHEET 3 OF 18
DATE: OCTOBER 1998	
REVISED: AUGUST 2008	REV. NO. 2



FEMA