

Communities Research

Economic and Social Sciences Research Program
Alaska Fisheries Science Center



Communities Research

- MSA Fishing Communities Identification
- Fishing Community Profiles
- Other Projects
 - Alaska Native TEK
 - Commercial Fishing Crews
 - IFQ and small GOA communities
 - GIS Fisheries Data

National Standard 8 of MSFCMA:

"Conservation and management measures shall, consistent with the conservation requirements of this Act (including the prevention of overfishing and rebuilding of overfished stocks), take into account the importance of fishery resources to fishing communities in order to (A) provide for the sustained participation of such communities, and (B) to the extent practicable, minimize adverse economic impacts on such communities."

MSFCMA defines a fishing community as:

"a community which is substantially dependent on or substantially engaged in the harvest or processing of fishery resources to meet social and economic needs, and includes fishing vessel owners, operators, and crew and United States fish processors that are based in such community."

MSA Fishing Community Identification

- 2003: Independent Indicator Model
 - 8 indicators from Alaska
 - Threshold of >15% or > the mean
- 2004: DEA Model
 - 16 indicators from AK, WA, OR, & CA
 - Threshold of >1SD above the mean
 - Dependent/Engaged treated separately
 - North Pacific, West Coast, and combined
- 2005: Discrete Choice Model
 - In development with AFSC Economists

Example indicators

- Landings in tons
- Landings by value
- Number of processors
- Number of vessels delivering
- Number of vessels homeported*
- Number of vessels owned by residents
- Number of crew licenses
- Number of Federal Permits
- Number of State Permits
- Recreational Licenses



Kodiak, Alaska

Fishing Community Profiles

- Short Form Profiles
 - 130 in Alaska
 - 122 in other states
- Long Form Profiles
 - On hold until Short Form Profiles are complete



Anchorage, Alaska

Content of AFSC Short Form Profiles

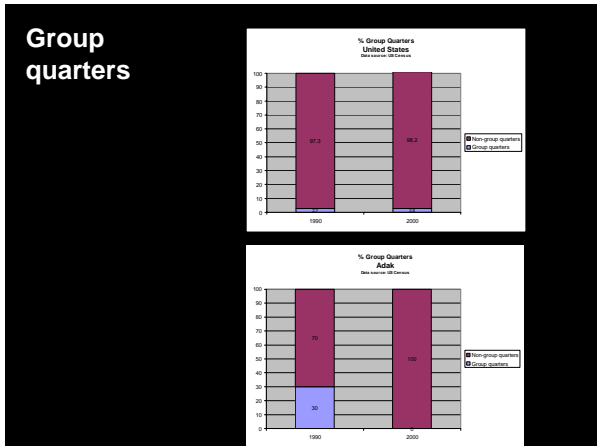
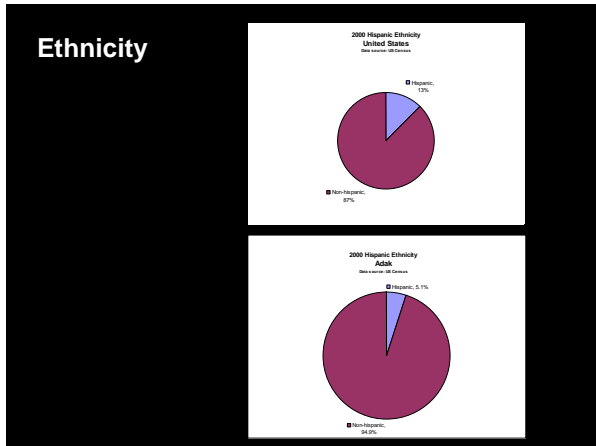
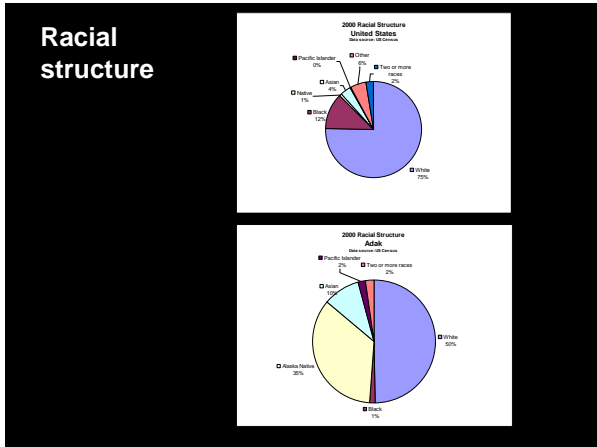
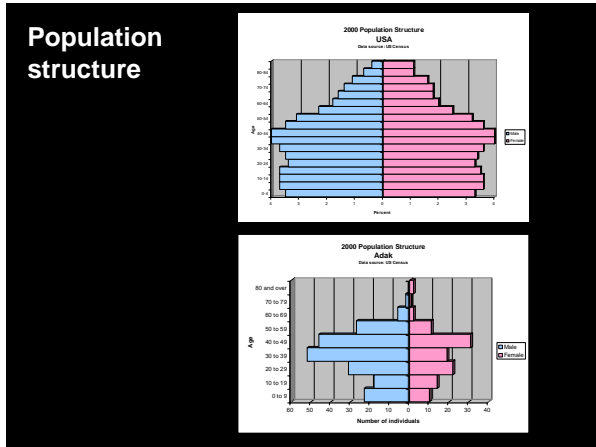
- 1) People and Place
- 2) Infrastructure
- 3) Involvement in the North Pacific Fisheries

*This section of presentation put together by Christina Package, AFSC

People and Place

- Location
- Demographic profile
- History

figures: population pyramid, racial structure, ethnicity, group quarters

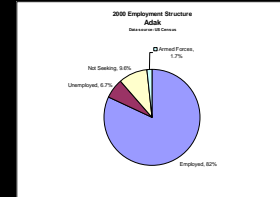
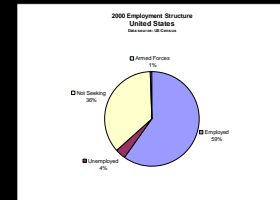


Infrastructure

- Current economy
- Governance
- Facilities

figures: employment

Employment structure



Involvement in North Pacific Fisheries

- Commercial fishing
- Sport fishing
- Subsistence

Involvement in North Pacific Fisheries

Commercial Fishing
 Since Aleut Corporation acquired the land on Adak there has been an attempt to turn the village into a fishing center for the area. In the year 2000 there were four commercial fishing permits issued to residents of Adak. There was one community member who owned a vessel participating in federal commercial fisheries who was a resident of Adak and according to the Commercial Fisheries Entry Commission there were two licensed crew members from Adak in the year 2000. Of the four commercial fishing permits issued to residents of the community all were issued for the harvesting of groundfish. Of those four, one was for miscellaneous salt water finfish using a hand troll, one was for miscellaneous salt water finfish using a mechanical jig, one was for demersal shelf rockfish with a longline vessel under 60' in the southeast, and one permit was for demersal shelf rockfish using a mechanical jig in the southeast, although this last permit was not actually fished during that particular year. There were 49 vessels which delivered Other Groundfish landings in Adak, 24 which delivered sablefish, 12 which delivered halibut, and 12 vessels which delivered Bering Sea and Aleutian Islands (BSAI) crab landings to the community. In accordance with confidentiality regulations, data for fish landings in the community is unavailable. There is one land-based processing plant, Norquest-Adak Seafood Co., located in the community of Adak which processes BSAI crab, groundfish, halibut, and sablefish. The plant has been in operation as Norquest since the year 2000 and the land for the plant is leased from Aleut Corporation. The City of Adak was recently granted \$88,548 by the Southwest Alaska Municipal Conference as part of the Steller Sea Lion Mitigation program "in recognition of the negative economic impacts of federal measures to protect the Steller sea lion" with money which had been allocated by the United States government (Southwest Alaska Municipal Conference 2003).

Applications and Benefits of Community Profiles

- Social Impact Assessments
 - Provides baseline data
- NEPA
 - Cut and paste into documents
- National Fishing Communities Database
- Many communities
- Inclusion
 - Looks at many communities not previously examined by NMFS
- Outreach
 - Community feedback has been positive so far

Current status of profiles projects

2003 Alaska Profiles: in review by communities

- city/village offices
- village native corporations
- village councils
- regional native corporations
- community development quota groups

2004 Joint West Coast Profiles project with AFSC, NWFSC & SWFSC: drafting of profiles in progress through 2005.



Moss Landing, California

Other Non-Economic Social Science Projects at AFSC

- Alaska Native Traditional Knowledge
- Commercial Fishing Crew Demographics
- IFQ emigration from small, remote fishing communities in the GOA
- GIS and Fisheries Data