

SUN VALLEY
MANAGEMENT FRAMEWORK PLAN

Butte, Blaine, Camas, and Elmore Counties
State of Idaho

Prepared by
Department of Interior
Bureau of Land Management
Shoshone District

We recommend that this plan be approved.

Ervin R. Cowley
Monument Area Manager

12-9-81
Date

Acting Robert C. Moline
Bennett Hills Area Manager

12-9-81
Date

Approved by:

Alvin C. Brannen
Shoshone District Manager

12/9/81
Date

I concur:

J. G. Bingham
State Director, Idaho ~~Acting~~

DEC 14 1981
Date

TABLE OF CONTENTS

	<u>Page Number</u>
Cover Sheet	i
Table of Contents	ii
Introduction	iv
General Policy Statements	iv
Location Map	v

NORTH CAMAS ANALYSIS UNIT

Description	NC-1
General Management Philosophy	NC-1
Specific Management Decisions and Rationales	NC-1
Lands	NC-1
Minerals	NC-2
Forest Products	NC-3
Livestock Forage	NC-4
Watershed	NC-6
Wildlife	NC-7
Visual Resources Management	NC-9
Off-Road Vehicles (ORVs)	NC-10
Cultural Resources	NC-10
Fire Management	NC-11
Table NC-1: Deer and Elk Seasonal Use by Grazing Allotment on Public Lands in the North Camas Analysis Unit	NC-12

SUN VALLEY ANALYSIS UNIT

Description	SV-1
General Management Philosophy	SV-1
Specific Management Decisions and Rationales	SV-1
Lands	SV-1
Minerals	SV-4
Forest Products	SV-6
Livestock Forage	SV-6
Watershed	SV-7
Wildlife	SV-8
Recreation	SV-9
Fire Management	SV-11
Support Needs for the Sun Valley Analysis Unit	SV-12
Map SV-1: Public Lands in Sun Valley Analysis Unit	SV-13
Map SV-2: Bald Mountain Winter Sports Area Environmental Education Area	SV-14
Map SV-3: North Ketchum Recreation Area	SV-15
Map SV-4: Areas to be Withdrawn from Mineral Entry	SV-16

BIG WOOD ANALYSIS UNIT

Description	BW-1
General Management Philosophy	BW-1
Specific Management Decisions and Rationales	BW-1
Lands	BW-1
Minerals	BW-4

TABLE OF CONTENTS (Cont.)

	<u>Page Number</u>
Forest Products	BW-5
Livestock Forage	BW-6
Watershed	BW-9
Wildlife	BW-10
Areas of Critical Environmental Concern (ACEC)	BW-12
Visual Resources Management (VRM)	BW-13
Off-Road Vehicles (ORVs)	BW-13
Recreation	BW-14
Fire Management	BW-15
Table BW-1: Deer and Elk Seasonal Use by Grazing Allotment on Public Lands in the Big Wood Analysis Unit	BW-16
Map BW-1: Area for Potential Industrial Use; State Land	BW-17

MULDOON ANALYSIS UNIT

Description	M-1
General Management Philosophy	M-1
Specific Management Decisions and Rationales	M-1
Lands	M-1
Minerals	M-3
Forest Products	M-4
Livestock Forage	M-6
Watershed	M-8
Wildlife	M-10
Areas of Critical Environmental Concern (ACEC)	M-12
Visual Resources Management (VRM)	M-12
Off-Road Vehicles (ORVs)	M-13
Recreation	M-15
Cultural Resources	M-15
Fire Management	M-15
Table M-1: Deer, Elk, and Antelope Seasonal Use by Grazing Allotment on Public Lands in the Muldoon Analysis Unit	M-17
Map M-1: Public Land Suitable for Disposal	M-18
Map M-2: Public Land Closed to Grazing	M-19

APPENDIX 1

Habitat Management Guides	A1-1
Project Coordination	A1-1
Project Implementation	A1-2
Livestock Management	A1-3
Fire Management	A1-3

APPENDIX 2

Executive Order 11296	A2-1
---------------------------------	------

APPENDIX 3

Table A: Grazing Management for the North Camas Analysis Unit	A3-1
Table B: Grazing Management for the Big Wood Analysis Unit	A3-2
Table C: Grazing Management for the Muldoon Analysis Unit	A3-4

INTRODUCTION

The Sun Valley Planning Area consists of the North Camas, Sun Valley, and Muldoon Planning Units, located in the northern part of the Shoshone District (see location map). The Sun Valley Planning Unit had an existing MFP, which was completed in April of 1975. The new MFP decisions make no major changes to the decisions in that plan.

The designation of Wilderness Study Areas (WSAs) and Areas of Critical Environmental Concern (ACECs) are important considerations within the planning area, and identification of lands for community needs is a major emphasis in the plan. There is also an emphasis on making the plan conform to the local comprehensive plans and zoning ordinances. This is to be done to the extent local plans are consistent with Federal laws. Detailed analyses of livestock grazing and its impacts on other uses have been completed through the Sun Valley EIS.

GENERAL POLICY STATEMENTS

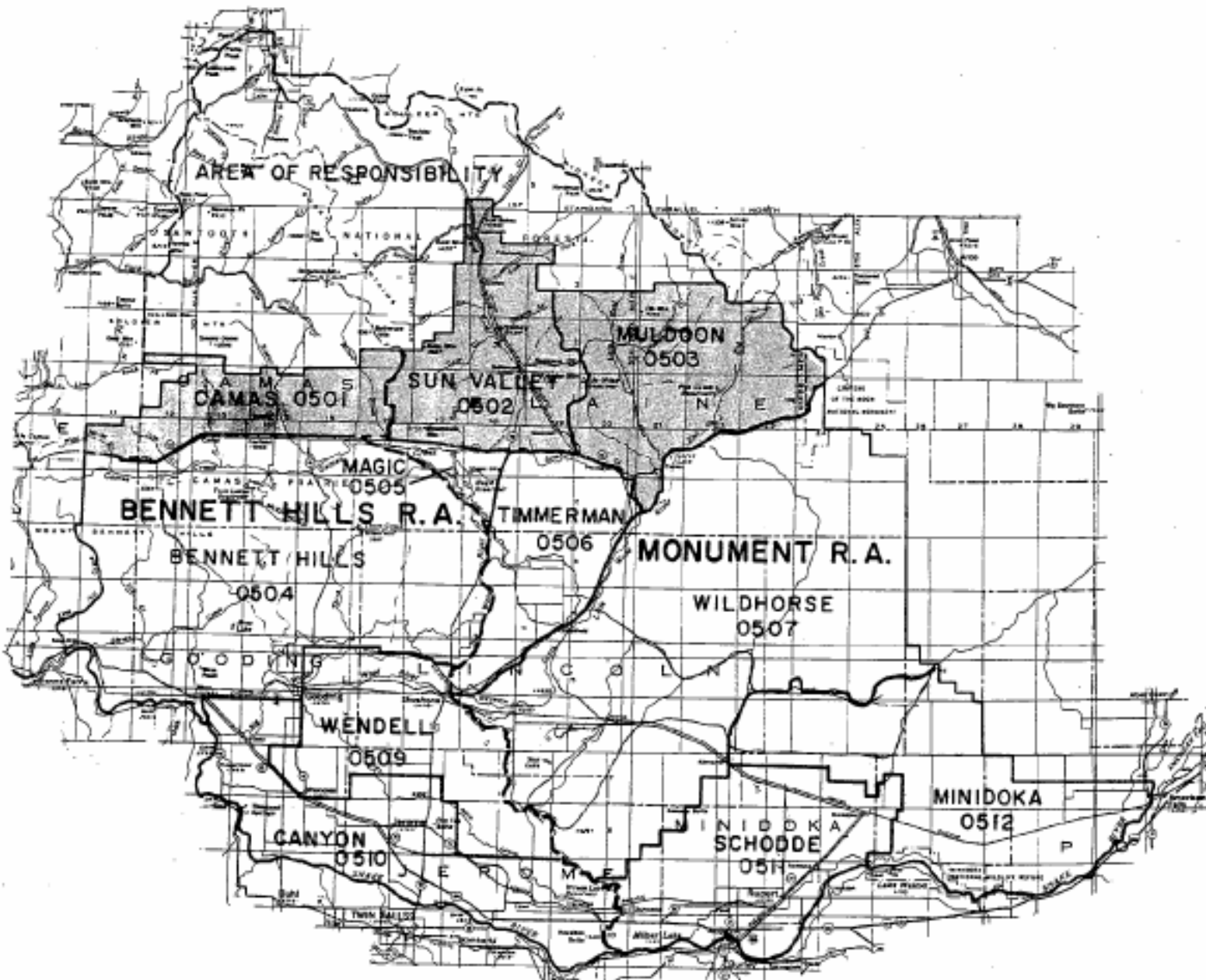
1. All wilderness study areas will be managed under the Interim Management and Policy Guidelines.
2. All public lands will be managed in a manner consistent with the Threatened and Endangered Species Act.
3. Nothing in this plan shall abridge any rights or privileges conveyed to American Indians under any valid treaty.
4. All authorizations (such as permits, leases, easements, and rights-of-way) will be consistent with current Bureau policy and guidelines.
5. For all lands actions (exchange, public sale, etc.) requiring a Notice of Realty Action, all local governments and interested individuals will be notified in accordance with the appropriate regulations.
6. "Elk Habitat Relationships for Central Idaho" will be used as a reference tool to assist in the evaluation of anticipated benefits and impacts of proposed projects on elk ranges.
7. An implementation plan will be developed for this MFP detailing priorities, needed AMPs, HMPs, project plans, etc. These plans will include detailed designs, grazing systems, improvements, facilities, etc. and will be analyzed through the environmental assessment procedure. All detailed plans will be prepared consistent with this MFP.
8. Access needs will be considered in all management decisions, including land disposal, exchanges, and rights-of-way.

UNITED STATES
DEPARTMENT OF THE INTERIOR
BUREAU OF LAND MANAGEMENT
SHOSHONE DISTRICT

IDAHO

----- RESOURCE AREA BOUNDARY
————— PLANNING UNIT BOUNDARY

SUN VALLEY PLANNING AREA



NORTH CAMAS ANALYSIS UNIT

DESCRIPTION

The North Camas Unit encompasses the area north of State Highway 20 and south of the Sawtooth National Forest, west of Willow Creek, and east of Wild Horse Creek (8 miles west of Hill City, Idaho). Most lands border the national forest and are hilly to mountainous. Vegetation is sagebrush-grass in the lower areas, ranging to Douglas-fir and some ponderosa pine stands in the higher country. Public, state, and private land is intermingled throughout the unit in various and complex patterns. Wildlife, livestock grazing and trailing, and recreation are the major uses.

GENERAL MANAGEMENT PHILOSOPHY

The majority of this area is identified for disposal by state exchange or other means. Some large blocks of public land will be retained and managed for open space, recreation, wildlife habitat, and livestock grazing. State lands in these areas will be acquired.

SPECIFIC MANAGEMENT DECISIONS AND RATIONALES

Lands

Decision Number 1

Because of the complex land patterns, lands within this unit will be disposed of with the following restrictions, priorities, or exceptions:

- a. The Lime Creek Area (see MFP 3 Overlay) will be disposed of by exchange in the following priority:
 - (1) U.S. Forest Service administration
 - (2) State/BLM exchange with priority given to BLM acquiring state land in Deer Creek Area (see MFP 3 Overlay).
- b. Retain the Deer Creek Area (see MFP 3 Overlay) with an active exchange program with the state to enhance each agency's management capabilities.

PLAN AMENDMENT NO. NC-1

Page NC-1
Plan Name Sun Valley MEP Chapter _____ Area Monument
Heading Lands

(Summarize substance of text material change in amendment document.)

CHANGE : *See attached*

(Describe rationale for above amendment and give reference to location of amendment document.)

REASON :

SIGNATURE AS APPROPRIATE :

Program Leader _____ Date _____

Area Plan/Environ Coord *W. [Signature]* Date 11/8/91

Area Manager _____ Date _____

Retention To Transfer - Area 2

Amend the Sun Valley MFP and Monument RMP by re-designating the following lands from retention to transfer category.

Sun Valley MFP - Map No. 1 and 1d

Area 2 - Parcel A

T. 1 N., R. 15 E., B.M., Camas County
Section 21: SW $\frac{1}{4}$ SW $\frac{1}{4}$;
Section 28: NW $\frac{1}{4}$ NW $\frac{1}{4}$; containing 80 acres

Monument RMP - Map No. 1 and 1e

Area 2 - Parcel B

T. 5 S., R. 17 E., B.M., Lincoln County
Section 30: Lot 4
Section 31: Lots 1,2,3,4
S $\frac{1}{2}$ NE $\frac{1}{4}$, E $\frac{1}{2}$ NW $\frac{1}{4}$,
NE $\frac{1}{4}$ SW $\frac{1}{4}$, N $\frac{1}{2}$ SE $\frac{1}{4}$ SW $\frac{1}{4}$,
N $\frac{1}{2}$ SE $\frac{1}{4}$, N $\frac{1}{2}$ N $\frac{1}{2}$ S $\frac{1}{2}$ SE $\frac{1}{4}$,
S $\frac{1}{2}$ NW $\frac{1}{4}$ SW $\frac{1}{4}$ SE $\frac{1}{4}$;
Section 32: S $\frac{1}{2}$ N $\frac{1}{2}$, N $\frac{1}{2}$ SW $\frac{1}{4}$,
N $\frac{1}{2}$ N $\frac{1}{2}$ SE $\frac{1}{4}$, N $\frac{1}{2}$ S $\frac{1}{2}$ NW $\frac{1}{4}$ SE $\frac{1}{4}$,
N $\frac{1}{2}$ SW $\frac{1}{4}$ NE $\frac{1}{4}$ SE $\frac{1}{4}$;
Section 33: SW $\frac{1}{4}$ NE $\frac{1}{4}$, S $\frac{1}{2}$ NW $\frac{1}{4}$,
N $\frac{1}{2}$ NW $\frac{1}{4}$ SW $\frac{1}{4}$, N $\frac{1}{2}$ N $\frac{1}{2}$ NE $\frac{1}{4}$ SW $\frac{1}{4}$,
S $\frac{1}{2}$ NW $\frac{1}{4}$ NE $\frac{1}{4}$ SW $\frac{1}{4}$, N $\frac{1}{2}$ N $\frac{1}{2}$ NW $\frac{1}{4}$ SE $\frac{1}{4}$; containing 1033.15 acres.

Alternative No. 1 - Preferred Alternative/Private Exchange

- Change this parcel management category from retention to transfer from federal ownership. Dispose of the lands under authority of Section 206 (Exchanges) of the Federal Land Policy and Management Act (FLPMA) (43 U.S.C. 1716). This would allow the Bureau to obtain privately owned lands with high values for public access, recreation and wildlife, and riparian habitat potential in exchange for the above identified lands. Allotted AUMs in the allotment would be retired and not be readjudicated or permanently allotted. Management emphasis would be geared to riparian habitat improvement. Grazing would be considered as a management tool on a temporary non-renewable use based on inventory of livestock capacity and after the appropriate level of NEPA analysis. The type of livestock and use will be selected on the basis of the ability to use this type management to control vegetation while protecting steep, fragile slopes and sensitive riparian habitat.

- c. Except for the Lime Creek Area, make state exchange the priority disposal method to block up public land for efficient management.
- d. Lands containing cultural values of National Register significance will be retained in either federal or state ownership.
- e. Legal and physical public access to Deer Creek from the south will be obtained.

Rationale

Many isolated tracts exist plus tracts interlaced with private and state lands to the point administration of public land is difficult or impossible.

Emphasis on disposal by state exchange will allow each agency to efficiently manage blocked up tracts of land rather than isolated tracts. Alternative means of disposal will eliminate lands not possible to administer.

This analysis unit contains lands with potentially significant cultural resources. This significance will be determined, explored, and evaluated prior to disposal.

The Deer Creek Area contains lands with a combination of scenic, wildlife, and recreation values that justify retention.

Convenient access to the retained areas would benefit the public.

Minerals

Decision Number 1

Stock driveway withdrawals will be revoked and all areas will be open to leasable and locatable minerals and geothermal leasing.

Mineral material sales and free use will be allowed if consistent with this plan.

Rationale

All withdrawals will be revoked since the Federal Land Policy and Management Act adequately protects public land resources.

Geothermal energy needs are recognized and the North Camas Unit has potential that will be made available on retained lands and during interim management of lands identified for disposal.

The need for mineral materials by state and local governments has been established. Material should be provided for public benefit when consistent with management decisions for other resources.

Forest Products

Decision Number 1

Intensively manage areas that are capable of timber production. Use the following guidelines for all timber harvesting except sanitation cuts or salvage sales conducted because of damage by fire, disease, insects, or other similar causes.

Timber Harvest Guidelines

- a. No clear cut will exceed 45 acres.
- b. Maximum clear-cut widths will be 1600 feet on big game winter range and 1000 feet on summer range.
- c. No timber harvest on crucial elk or deer winter range except in case of damage by disease, insects, fire, etc., or unless the harvest would be beneficial to the big game involved.
- d. Cut in a mosaic or mottled pattern.
- e. Strive for a ratio of 60 percent forage to 40 percent cover on harvested timber stands.
- f. Maintain snags for wildlife. Each area to be harvested will be evaluated and guidelines will be developed for the number of snags to be retained.
- g. Comply with the provisions of the Idaho Forest Protection Act.
- h. A 200-foot radius will be left around nests of sensitive bird species. Other nests will be protected to the extent practical.

Decision Number 2

Firewood, Christmas trees, posts and poles, and other woodland products will be sold on vegetative permits. These sales will be evaluated on a case-by-case basis.

Rationale for Decisions 1 and 2

Although the availability and demand for forest products has been small, demand will probably increase, especially for firewood, posts and poles, and Christmas trees. The timber can be used on a managed basis to meet some public needs. These needs will be local in nature because of the distance to the larger population areas and the limited quantities.

Livestock Forage

Decision Number 1

Stock and manage the grazing allotments as summarized and updated in the Rangeland Program Summary (RPS). Tables from the current RPS are enclosed as Appendix 3, summarizing the stocking rates and other management. Changes in grazing management may be made based on monitoring and/or findings of environmental assessments, consistent with other provisions of this land use plan. Changes will be documented in revisions of the RPS.

Rationale

Livestock grazing is the major use within this analysis unit. It is a very important segment of the local economy, and can be managed for sustained yield and multiple use. The selected grazing management has been subjected to comprehensive analysis in an environmental impact statement, and is consistent with the public comments received.

Decision Number 2

Brush control, seeding, water developments, fencing, and other range improvements will be implemented as described in Table A of Appendix 3, contingent on sufficient funding levels. These improvements, and any others proposed, will be subject to an environmental assessment and cost-benefit analysis prior to final approval.

Rationale

Range improvements of all types are needed to improve range condition in some areas. These include livestock management facilities such as fences, water developments, and cattleguards, as well as land treatment.

Decision Number 3

Allotments may be divided or combined to meet the needs of the livestock industry and/or to improve livestock management.

Rationale

Changing requirements for livestock operators may require combining or splitting allotments for improved management of the range or to meet management objectives.

Decision Number 4

Conversions from sheep to cattle and from cattle to sheep will be allowed within the inventoried carrying capacity and will take into account range suitability, manageability, wildlife habitat, and other factors. An environmental assessment will be completed to evaluate the details of each specific proposal.

Rationale

There is a continuing trend to change livestock operations from sheep to cattle. Care must be taken to ensure the change from sheep to cattle will not damage the range or wildlife habitat. The range inventory takes into account suitability, palatability, and diet.

Decision Number 5

Increased forage will be allocated to livestock on a nonrenewable basis for a minimum of five years, during which monitoring must confirm the permanent nature of the forage before increasing the active preference.

Rationale

This procedure will allow monitoring of the increased stocking rate through utilization and trend studies. It will allow increased use with much more flexibility to evaluate the effects of the use.

Decision Number 6

Vegetation manipulation may be done under the following guidelines:

- a. Brush may not be removed in crucial elk or deer winter range unless an analysis indicates it will not adversely affect the elk or deer.
- b. In sage grouse areas, the Western States Sage Grouse Committee's guidelines will be used (see Appendix 1). Guidelines may be modified by local area, e.g., mosaic patterns within a two-mile radius of strutting grounds.
- c. Proposed treatments will be designed to have as little adverse impact on the visual resources as practical (see VRM for classes).
- d. Proposals to use chemical sprays will be cleared through the applicable BLM requirements and reviewed by the Idaho Department of Fish and Game.

Rationale

Much of the vegetation manipulation will be accomplished with controlled burns or modified suppression plans. However, all other techniques of brush control are available to meet particular needs. The guidelines will minimize adverse impacts on other resources.

Watershed

Decision Number 1

Maintain sufficient vegetative cover to protect public lands from accelerated erosion. Minimize soil compaction and disturbance due to livestock grazing, timber harvest, and construction and maintenance of all facilities. Consider time of year for the use, select techniques that are less disturbing, etc.

Rationale

Most of this unit is hilly to mountainous. Because of the steep slopes, extreme care must be taken not to increase erosion and reduce productivity.

Decision Number 2

Minimize stream sedimentation by stabilizing deteriorating streambanks. Improve to at least fair condition all riparian areas, and reduce sediment from high source areas such as mine tailings, poorly located or designed roads, areas of active channelling, etc.

Rationale

Water quality of the streams in this unit is generally good. Most of the streams drain into irrigation reservoirs, and any increase in sedimentation will shorten their life span. Many of the streams are also good fisheries, which would be adversely effected by sedimentation.

Decision Number 3

Protect all ground water recharge areas. Uses that would adversely affect ground water quality or quantity, or reduce artesian pressure, should be restricted.

Rationale

Ground water quality and quantity are important for irrigation and domestic use within and outside the unit.

Decision Number 4

Protect all developed springs from livestock use at the water source.

Rationale

These water sources are important for all of the public land uses. The protection of the source areas will make a more dependable water supply, protect important wildlife habitat, and reduce the likelihood of spreading disease in livestock.

Wildlife

Decision Number 1

Provide forage for big game animals as listed in Table NC-1, at the end of this analysis unit section.

Rationale

This forage allocation will allow for an increase in big game numbers as projected by the Idaho Department of Fish and Game. The public lands only

supply a proportionate share of the needed forage. The remainder will be produced by private and state lands. Competition for forage between big game and livestock is only about 7 percent based on dietary overlap.

Decision Number 2

Manage major deer migration routes to minimize impedance to big game. Facilities such as fences, right-of-way facilities, and buildings will be constructed in such a way as to have a minimal effect. Bureau fencing specifications will be used, which are designed to minimize impacts on big game habitat.

Rationale

The big game migration routes are important for the maintenance of healthy populations. These corridors can be managed with a minimal impact.

Decision Number 3

All crucial deer and elk ranges will be managed for the needs of the animals, within the allocation limit. Vegetation manipulation, including timber harvest, will only be done where there are minimal adverse impacts on the crucial habitat.

Rationale

All crucial habitats are essential for the survival of the expected populations. Disruption of these areas can cause severe hardships, including starvation, for the big game.

Decision Number 4

All seedings in wildlife areas will have a seed mixture that provides forbs and shrubs (if needed and adaptable) and a mixture of appropriate grasses.

Rationale

Seed mixtures, particularly with appropriate forbs and/or shrubs, will increase the value of the area for wildlife as well as increase livestock forage and stabilize soil conditions.

Decision Number 5

Riparian areas will be given special attention. All riparian areas in poor condition will be improved to at least fair condition. All others will be maintained or improved.

Rationale

Riparian areas are particularly important to a large number of wildlife species. These areas are also very productive for livestock forage and, if abused, can cause severe erosion and sedimentation problems.

Decision Number 6

Streams will receive special attention. Appropriate management techniques will be used to improve stream bank vegetation to at least fair to good condition. The major streams are Big Deer Creek, Ear Creek, Rough Creek, and South Fork Lime Creek.

Rationale

These streams presently have fish populations or have the potential for a fishery. The prime interest is to improve areas in poor condition or with erosion problems to improve habitat quality.

Decision Number 7

Protect raptor habitat to the extent practical.

Rationale

Raptors are an important segment of the wildlife population. Some species are particularly sensitive to man's presence.

Visual Resources Management (VRM)

Decision Number 1

Manage the Lime Creek and Deer Creek areas in visual resource class III (see MFP 3 Overlay).

Rationale

The area identified for retention and the area to be transferred to the Forest Service have visual resources that should be protected. A class III designation will allow development while maintaining visual quality.

Decision Number 2

The remainder of the unit will be managed in visual resource class IV.

Rationale

Class IV, allowing changes to subordinate the natural landscape character, reflects management appropriate for the remaining range lands interspersed with structures and altered land patterns associated with farming development.

Off-Road Vehicles (ORVs)

Decision Number 1

The unit will be open to ORV use.

Rationale

No problems have been identified or are anticipated.

Cultural Resources

Decision Number 1

Cultural resource values will be considered in all actions. Disposal proposals are subject to the findings of significance of cultural resources on unit lands.

Rationale

All cultural values will be protected as required by policy and law.

Fire Management

Decision Number 1

Wildfires starting between June 1 and September 30 will be suppressed as quickly as possible. Modified suppression may be used during the rest of the year, based on the following considerations:

- a. Potential beneficial and adverse effects of the burn.
- b. Potential size of the fire.
- c. Cost of suppression.
- d. Existence of an adequate prescription.
- e. Monitoring of the fire from the initial report until it is out.
- f. Fuel type in which the fire is burning. Timber fires will be suppressed.

Rationale

Fall and spring burning can be very beneficial to certain values on public land, including forage production and diversity, wildlife habitat, watershed condition, etc. Generally, ridge tops become effective fire lines, preventing fires from getting larger. Cool nights help suppress fires in sagebrush communities.

TABLE NC-1

DEER AND ELK SEASONAL USE
 BY GRAZING ALLOTMENT ON PUBLIC LANDS
 IN THE NORTH CAMAS ANALYSIS UNIT

ALLOTMENT	DEER MONTHS SUMMER May 1-Oct 30	DEER MONTHS MIGRATION Apr 16-Apr 30 Nov 1-Nov 14	DEER MONTHS WINTER Nov 15-Apr 15	ELK MONTHS SUMMER May 1-Oct 30	ELK MONTHS WINTER Nov 15-Apr 14
Base Line	107	13			25
Cow Creek	19	16			
Deer Creek (NC)	381	45	50	84	70
Ear Creek	288	34		44	
Elk Creek	128	15		6	21
Fairfield	24	8			
Hot Springs	115	13			
McHan Creek	29	3			
Mill Canyon	65	8			10
Mountain View	39	5			
Phillips Creek	19	2			
Piney	58	6			2
Powell Creek	24	3			1
Roanhide	134	16		20	
Rough Creek	232	28		36	
Sheep Point	66	11			30
Sheep Trail	120	30			
Soldier	123	18		16	
Three Mile	10	2			
Willow Creek	63	8	60		
	2044	284	110	206	159

SUN VALLEY ANALYSIS UNIT

DESCRIPTION

The Sun Valley area includes public lands located in T. 5 N., R. 17 and 18 E., T. 4 N., R. 17 E., and the north half of T. 4 N., R. 18 E. (see Map SV-1). The topography varies from the flat valley bottoms of the Wood River Valley to the mountainous areas on each side of the valley. Vegetation varies from sagebrush-grass to Douglas-fir on northern mountain slopes. The cities of Ketchum and Sun Valley are located in this area. Blaine County has active and strict comprehensive planning and zoning ordinances.

GENERAL MANAGEMENT PHILOSOPHY

This area will be managed for recreation, local government needs, and open space. Other uses include intensive recreation development, watershed protection, and livestock grazing. All public lands within this analysis unit will be transferred to the Forest Service for administration through boundary adjustments. The following decisions will provide for interim management while the lands are under BLM jurisdiction.

SPECIFIC MANAGEMENT DECISIONS AND RATIONALES

Lands

Decision Number 1

Public lands will not be disposed of except for local government needs or for public uses under the Recreation and Public Purposes Act. These uses must be in compliance with the Blaine County land use planning and must be consistent with the general recreation and open space uses designated for this area. Uses in flood plains must be consistent with E.O. 11296 (see Appendix 2).

Rationale

This area includes flat lands along the Big Wood River and mountainous country. The public lands are the only lands in this area that are not planned for intensive development. Of particular note is the public lands along the Big Wood River.

This stream provides good fishing with good access and helps maintain the quality of life in the area. Therefore the public values are high.

There is little land available for the needs of local government and these public lands may fill part of that need. The local planning and zoning ordinances are strong and supported by local government.

This decision includes all disposal Step 1 recommendations L1.1, L2.1, L3.1, L3.2, L3.3, and L3.5.

Decision Number 2

Utility rights-of-way will be allowed if consistent with county planning and zoning ordinances. All construction will be designed to be as unobtrusive as practical (i.e. buried utility lines, placement of structures, color, design, etc.).

Rationale

The expanding population in this area will require increased utilities. Additional rights-of-way for all types of utilities will be needed. Step 1 recommendations included are L5.1, R12.2, and R12.3.

Decision Number 3

Road and trail rights-of-way, both private and public may be allowed when consistent with local planning and zoning ordinances and consistent with the general management criteria within this area and environmental impacts are minimal.

Rationale

The Sun Valley area has a rapidly growing population. With this growth is some requirement for additional roads and trails. Rights-of-way across public lands may be less damaging to the total environment than the alternatives would be. Local planning ordinances are strong and provide most of the needed protection. This decision incorporates Step 1 recommendations L5.1 and L5.2.

Decision Number 4

Do not allow disposal of public lands within flood plains, riparian areas, water frontage, water sources, except for public uses consistent with the general management of the area and E. O. 11296.

Rationale

Riparian areas are generally associated with spring areas and along streams. These zones have high wildlife values and are generally associated with flood plains. Step 1 recommendations included are L1.1, L2.1, L3.1, L3.2, L3.3, L3.4, L3.5 and L4.1.

Decision Number 5

Communication sites may be allowed if they meet the following:

- a. They will not become a major intrusion in the visual resources.
- b. Antennas will not exceed 15 feet above a ridge line.
- c. All structures will be designed to blend into the natural contours of the area.
- d. All structures will be painted to blend in with the surrounding areas.
- e. All disturbed areas will be revegetated.
- f. All development will comply with BLM Manual criteria for Visual Resource Management Class III.

Rationale

The population growth requires increased communications. The location of sites are not known at this time, however, there is potential on several of the mountain peaks. The stipulations will minimize adverse impacts.

Decision Number 6

The public lands located in Section 13, T. 4 N., R. 17 E., B.M., Idaho, (see Map SV-2) will be made available to the Hemingway School through an R&PP for an environmental education area. This parcel includes 70 acres (E2NW4NW4, N2SE4NW4, SE4SE4NW4, E2NE4SW4).

Rationale

This area is presently under a cooperative agreement with Hemingway School for an environmental education area. This use is valuable as the area is close to the school and along the Big Wood River providing an excellent education area. This decision includes Step 1 recommendations L3.2 and 3.3.

Decision Number 7

Remove all classifications made under the authority of the Classification and Multiple Use Act.

Rationale

FLPMA provides adequate protection for the retention of these lands in federal ownership.

Minerals

Decision Number 1

Allow geothermal leases with the following stipulations:

- a. Roads will be constructed to have the least impact on the visual resources.
- b. Structures will be painted to blend in with the surroundings.
- c. All developments must be in accordance with local planning.
- d. Protect surface water from contamination.
- e. All standard stipulations and specific stipulations developed through the environmental assessment process.

Rationale

This area has some geothermal potential, especially for space heating in Ketchum and Sun Valley. Through adequate stipulations, this resource can be developed with minimal adverse environmental impacts.

Decision Number 2

Withdraw the following areas from the function of the mining laws:

- a. Hemingway School Environmental Education Area T. 4 N., R. 17 E., Section 13: E2NW4NW4, N2SE4NW4, SE4SE4NW4, E2NE4SW4, containing 70 acres (see map SV-2).

- b. Bald Mountain Winter Sports Area - The area designated in the Cooperative Management Agreement with the USFS including public lands in Sections 13, 24, and 25, T. 4 N., R. 17 E. (see Map SV-2).
- c. North Ketchum Recreation Area - T. 5 N., R. 17 E., B.M., Section 36: NW4NW4, SE4NW4, E2SW4 and T. 4 N., R. 17 E., B.M., Section 1: Lots 2 and 3, SW4NE4. The total area includes approximately 272 acres (see Map SV-3).
- d. Areas shown on Map SV-4 that are private surface and public minerals.

Rationale

The areas along the Big Wood River, including the North Ketchum Recreation Area and the Environmental Education Area, are very valuable for public recreation and educational purposes. No mining claims are known to presently exist, but the river gravels may contain a small amount of gold. The cost of possible validity examinations would be precluded if these areas were withdrawn.

The Bald Mountain Winter Sports Area includes a multimillion dollar private investment in ski runs and lifts. This area is known world wide and is very important to the stability of the local economy. The potential mineral values are listed as undiscovered reserves. This indicates very low potential values.

The areas shown on Map SV-4 were patented under the Stock Grazing Homestead Act. They are now within the City of Sun Valley and include the Elkhorn Village development, many homes and condominiums, and several ski developments.

Decision Number 3

Material sales will not be allowed, except when consistent with the other decisions for this area, including visual resource management, local planning and zoning, general recreation, wildlife, etc.

Rationale

Most of the mineral materials (sand and gravel) are located along the river in areas that are to be protected for other uses. Other locations within the planning area can meet mineral material needs.

Decision Number 4

Protect paleontological and geological sites that have scientific or educational values.

PLAN AMENDMENT NO.

SV-6-1

Page SV-6
Plan Name Sun Valley MFP Chapter _____ Area Monument
Heading _____

(Summarize substance of text material change in amendment document.)

CHANGE : Designate the Sun Peak area as an Area of Critical Environmental Concern (560 Acres)

T. 5 N., R. 18 E., Section 32: $W\frac{1}{2}$
Section 31: $E\frac{1}{2}$

R. 4 N., R. 18 E., Section 5: $NW\frac{1}{4}NW\frac{1}{4}$
Section 6: $NE\frac{1}{4}NE\frac{1}{4}$

(Describe rationale for above amendment and give reference to location of amendment document.)

REASON : The amendment document is included and analyzed as part of Environmental Assessment (ID050-90-23) and Decision Record dated January 14, 1991

SIGNATURE AS APPROPRIATE :

Program Leader _____ Date _____

Area Plan/Environ Coord *William H. [Signature]* Date 1/30/91

Area Manager _____ Date _____

Designate 560 acres of the Sun Peak as an ACEC for the primary objective of preserving the existing vegetation community. The area would: 1) Be open to domestic sheep grazing only. The allotment would be monitored periodically to evaluate whether the site continues development toward the potential natural community. Should the site show movement away from the potential natural community, then the adjustments will be made to livestock grazing until such time as studies show the trend is again toward the potential natural community; 2) Be closed to Off-road vehicles (ORVs); 3) Be open to Oil and Gas exploration and development with a no surface occupancy stipulation; 4) Be closed to all surface disturbing activities except for research activities approved by the Area Manager and less than one acre size; 5) Be closed to all vegetation harvesting and manipulation except for research activities approved by the Area Manager and less than one acre size; 6) Be withdrawn to mineral entry under the 1872 mining law. The area manager will prepare a site specific, fire management plan based on the ecosystem need for fire to maintain the vegetation community. Fire suppression may occur without the use of bulldozers.

Watershed

Decision Number 1

Maintain sufficient vegetative cover to protect public lands from accelerated erosion. Minimize soil compaction and disturbance due to livestock grazing, timber harvest, and construction and maintenance of all facilities. Consider time of year for the use, select techniques that are less disturbing, etc.

Rationale

Most of this unit is hilly to mountainous. Because of the steep slopes, extreme care must be taken not to increase erosion and reduce productivity.

Decision Number 2

Minimize stream sedimentation by stabilizing deteriorating streambanks. Improve to at least fair condition all riparian areas, and reduce sediment from high source areas such as mine tailings, poorly located or designed roads, areas of active channelling, etc.

Rationale

There are several streams in the unit. Water quality is generally good. Most of the streams drain into irrigation reservoirs, and any increase in sedimentation will shorten the life span of the reservoirs. Many of the streams are also good fisheries, which would be adversely effected by sedimentation.

Decision Number 3

Protect all ground water recharge areas. Uses that would adversely affect ground water quality or quantity, or reduce artesian pressure, should be restricted.

Rationale

Ground water quality and quantity are important for irrigation and domestic use within and outside the unit.

Decision Number 4

Protect all developed springs from livestock use at the water source.

Rationale

These water sources are important for all of the public land uses. The protection of the source areas will make a more dependable water supply, protect important wildlife habitat, and reduce the likelihood of spreading disease in livestock.

Wildlife

Decision Number 1

Provide forage for 42 deer months in the Lake Creek Allotment.

Rationale

There is adequate forage to provide for the existing deer numbers. Little competition exists with livestock.

Decision Number 2

Maintain the Big Wood River in good to excellent condition as a fishery and for recreation.

Rationale

The Big Wood River provides a good fishery for the public. The area above the Hulen Meadows Bridge is a "catch and release" area. A large number of people fish the river throughout the area. It is also an important scenic feature in this recreation oriented area.

Decision Number 3

Protect the riparian area along the Big Wood River. Trails may be constructed but in such a way as to minimize disturbance of the riparian zone.

Where possible any construction will be outside the riparian zone. Recreation facilities will be designed for the least disturbance to the zone.

Rationale

Riparian areas, particularly along the Big Wood River, are important wild-life habitat, particularly for non-game species. This area is particularly important in this populated area to maintain the wildlife species along the river. Protection enhances the quality of life in the area.

Decision Number 4

Protect riparian areas around springs from livestock by fencing or other means.

Rationale

Spring areas and their associated riparian areas are particularly important wildlife habitat.

Recreation

Decision Number 1

Manage the Bald Mountain area (see Map SV-2) for intensive ski development. Allow additional development that is in accordance with a master plan approved by BLM and the U.S. Forest Service in accordance with the Memorandum of Understanding for the Management of the Bald Mountain Winter Sports Area.

Special Recreation Management Area 1-22-87 EC

Rationale

Bald Mountain is presently developed as one of the West's best ski areas. It is one of the major economic factors in this recreation-oriented county.

Decision Number 2

Special Recreation Management Area 1-22-87 EC

The North Ketchum Recreation Area (see Map SV-3) will be managed for its recreational values. Additional uses for public purposes may be allowed if in compliance with other sections of this plan. Additional recreation

development and upgrading of the existing recreation facilities may be made as the need arises. These will be limited to day use only.

Total Acreage 272.10 Acres
SC 6/6/84

Rationale

These lands provide access to the Big Wood River for recreation and open space in a growing population center. They also provide important land for other public uses, parks, playgrounds, etc. Overnight use of this area has been a problem. Many people have used these public lands for summer homes in tents, trailers, vehicles, etc., causing problems with other public land users, local law enforcement personnel or agencies, and local residents.

Decision Number 3

Noncompatible uses such as the material site right-of-way will be phased out as other acceptable sites are made available to the highway department. The site will be rehabilitated to the extent practical.

Rationale

The existing material site right-of-way is a nonconforming use. It is an intrusion into the landscape and visually offensive along scenic Highway 75 and the local residential areas. That portion between the highway and the river south of Hulen Bridge is critical to the Idaho Department of Highways for road maintenance purposes in this area. The Highway Department has expressed a willingness to relinquish their material site right-of-way on the west side of the river.

Decision Number 4

The public lands in this area will be managed under the "limited" off-road-vehicle (ORV) designation. The designation will limit vehicle use to designated roads and trails. The Bald Mountain Winter Sports Area is closed to ORVs except for authorized use under the permit or for official business. The environmental education area is closed to all ORV use.

Rationale

The protection of the vegetation and visual resources of this area enhances the quality of life for the adjoining land owners. Noise is a problem in the residential areas. Bald Mountain is under a commercial permit, primarily for skiing. Should ORVs be allowed on the mountain, excessive hazards

to the using public would result. Thus the closed designation. The environmental education values would be diminished if any ORV use was allowed on the education site.

Decision Number 5

The entire area will be managed in a VRM Class III. New ski runs may be constructed on Bald Mountain in accordance with an approved master plan.

Rationale

This area has a large number of existing developments associated with a growing population and recreation development. The Class III will allow development to meet the needs of the area, but still minimize adverse impacts to the visual resources. The downgrade from VRM Class II is a result of the local growth demands and existing conditions including the many intrusions into the existing environment.

Decision Number 6

All areas will have cultural resource clearance prior to any construction.

Rationale

All cultural values in this area will be protected as required by policy and law.

Fire Management

Decision Number 1

This area will continue under maximum fire protection. Wildfires will be controlled.

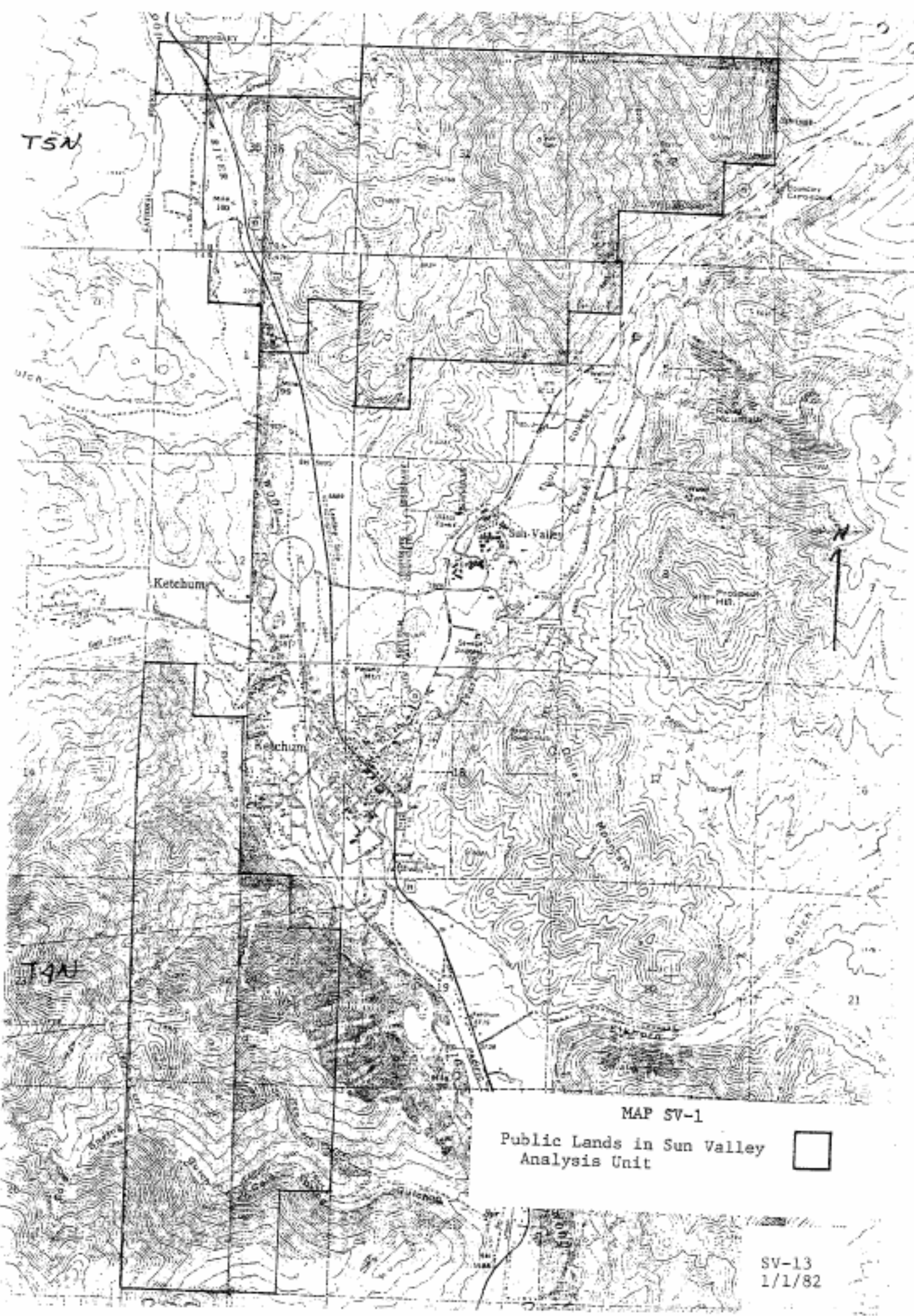
Rationale

This area contains many residences and developments of all kinds near public land. Fires in this area would be serious threats to private property.

SUPPORT NEEDS FOR THE SUN VALLEY ANALYSIS UNIT

1. A recreation management plan for the North Ketchum Recreation Area to replace the interim management plan.
2. Habitat management plan for the Big Wood River within the entire area.
3. An allotment management plan (AMP) for the Lake Creek Allotment including necessary monitoring.
4. Mineral withdrawal for Bald Mountain, North Ketchum Recreation Area, and the environmental education area.
5. A cooperative hazard reduction plan between BLM and USFS for the timber stands on Bald Mountain.
6. Monitoring of sheep trail use at the Lake Creek Bridge.
7. ORV designations for the area.

TSN

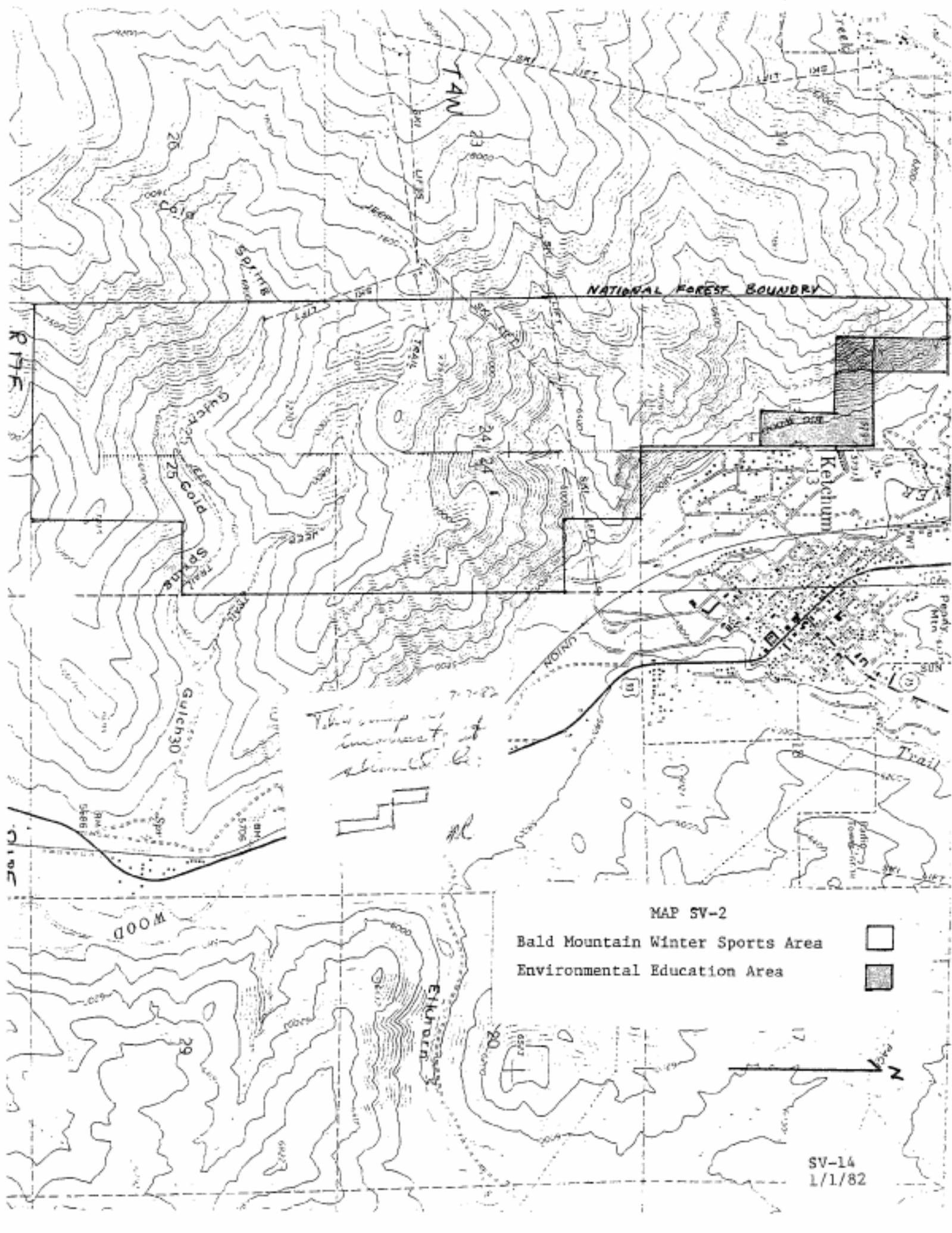


TSN

MAP SV-1
 Public Lands in Sun Valley
 Analysis Unit



SV-13
 1/1/82



T4W

NATIONAL FOREST BOUNDARY

R17E

Kelechum

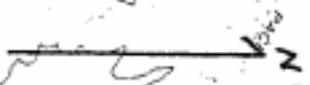
Gulch 30
Spite
Cold

This camp is incorrect, it should be:

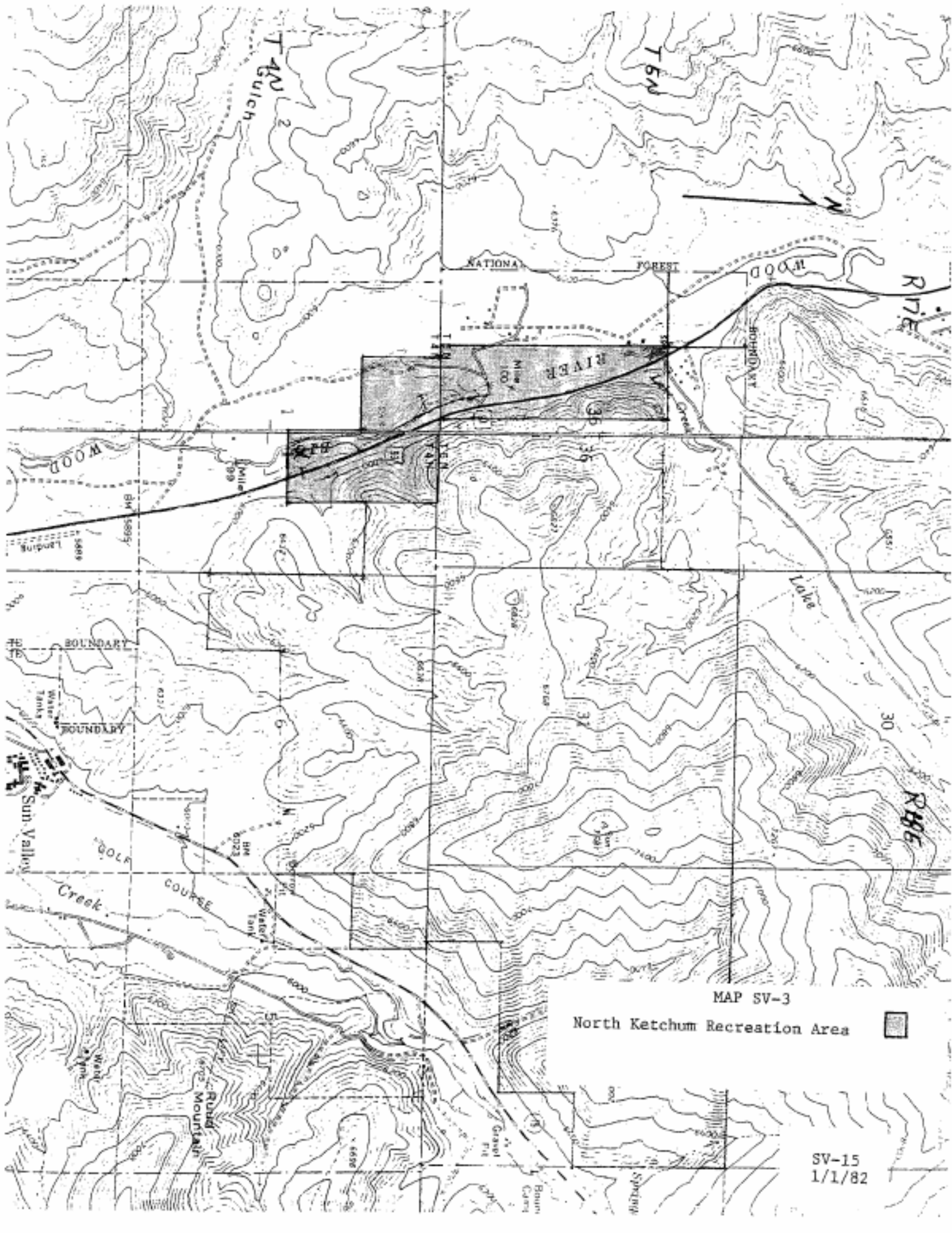


MAP SV-2

Bald Mountain Winter Sports Area
Environmental Education Area



SV-14
1/1/82



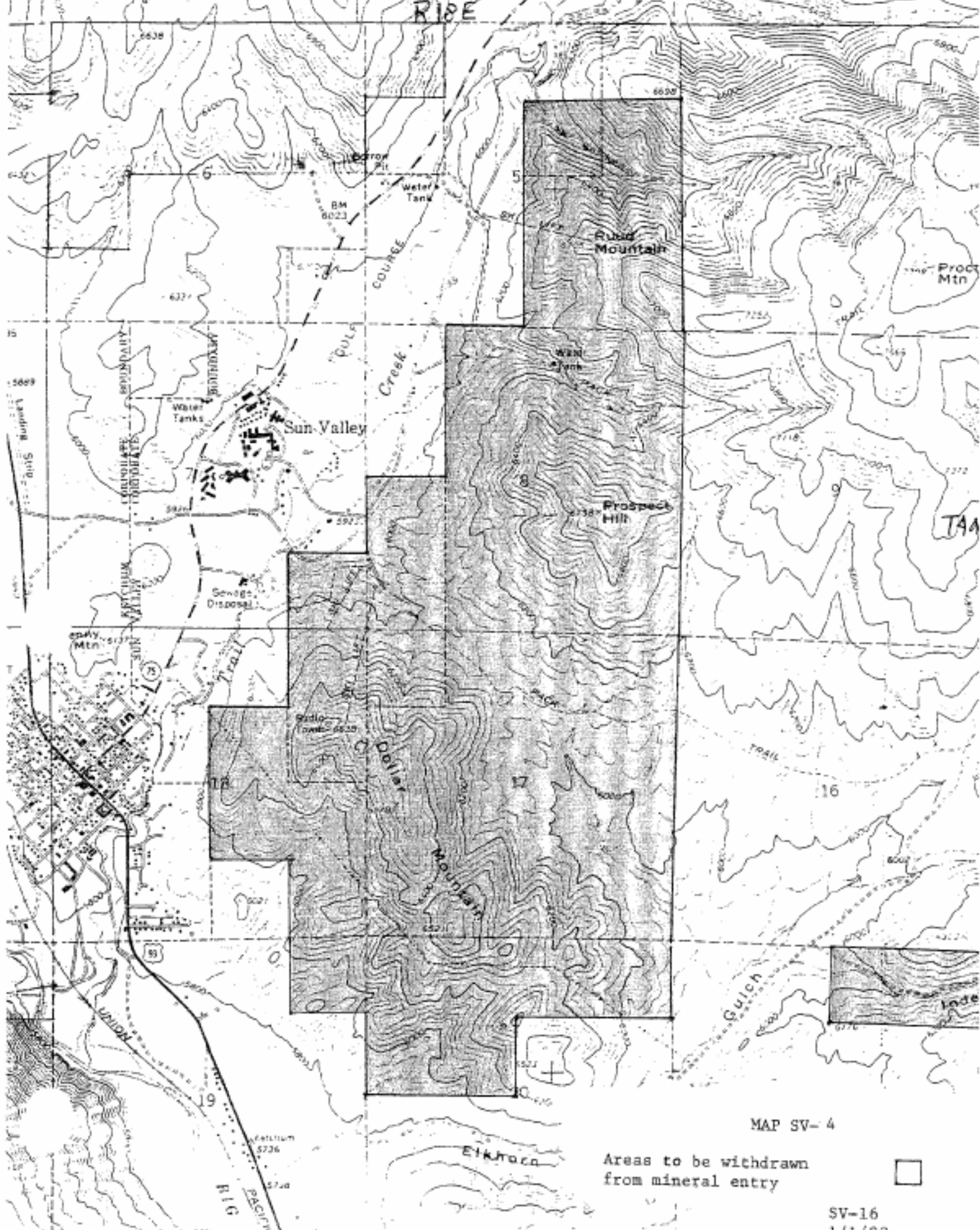
MAP SV-3

North Ketchum Recreation Area



SV-15
1/1/82

RIBE



MAP SV-4

Areas to be withdrawn from mineral entry



SV-16
1/1/82

BIG WOOD ANALYSIS UNIT

DESCRIPTION

The Big Wood Analysis Unit lies north of U.S. Highway 20, east of Willow Creek, west of the divide between the Big Wood and Little Wood rivers, and south of the Sawtooth National Forest. It excludes the Sun Valley Analysis Unit, which encompasses the public land on Bald Mountain and the public land north of Sun Valley/Ketchum. It comprises the Big Wood River and Camp Creek drainages and their tributaries, and a small part of the Willow Creek drainage. The public land in the unit is typically found on rolling to steep hills covered by sagebrush and grass. Small areas of Douglas-fir and/or aspen forests are also included. State Highway 75, the "Sawtooth Scenic Route," bisects the unit from north to south. The rapidly growing cities of Bellevue and Hailey are centrally located in the unit. Most of the unit is included in Blaine County, which has strict zoning ordinances and a very active Planning and Zoning Commission. A small part of the unit is in Camas County, which also has an active Planning and Zoning Commission.

GENERAL MANAGEMENT PHILOSOPHY

This unit will be managed to protect the watershed resources, wildlife habitat, open space, and scenic values. However, continued livestock grazing, timber harvesting, recreational activities, and mineral development will be encouraged as long as the proposed uses do not significantly reduce the other values.

SPECIFIC MANAGEMENT DECISIONS AND RATIONALES

Lands

Decision Number 1

Retain all public land unless disposal would be in the national interest, and the land meets one or more of the following criteria:

- a. The land qualifies under appropriate regulations for lease or sale under the Recreation and Public Purposes (R&PP) Act.

Mon 7/25/95
M. William Weigand
Lievsey 7/25/95

DECISION

A & P Partnership

Land Exchange IDI 28923

Title Accepted - Patent to Issue

Conveyance of the non-federal lands to the United States and satisfactory evidence of title have been filed under the Act of October 21, 1976 (Section 206, 90 Stat. 2756; 43 U.S.C. 1716).

Title to the non-federal lands is accepted. The exchange is approved for patenting as to the Federal lands, and the patent is now being issued. Any deposit made to insure payment of taxes on the offered lands will be refunded upon submission of evidence showing payment of taxes. This evidence can consist of a copy of the paid tax receipt or a statement to this effect from the county treasurer.

Federal Land

Boise Meridian, Idaho
T. 3 N., R. 18 E.,
sec. 26: NW 1/4NW 1/4, SW 1/4NW 1/4, SE 1/4NW 1/4.

Acres: 120.00 acres.

Non-Federal Land

Boise Meridian, Idaho
T. 2 N., R. 18 E.,
sec. 2: E 1/2SE 1/4
sec. 11: NE 1/4, SE 1/4NW 1/4, NE 1/4SW 1/4, S 1/2SW 1/4, N 1/2SE 1/4.

Acres: 480.00 acres.

Reservations

Federal Land:

Excepting and Reserving to the United States: A right-of-way thereon for ditches and canals constructed by the authority of the United States, Act of August 30, 1890 (43 U.S.C. 945).

Non-Federal Lands: NONE

for Larry R. Lievsey
M. William Weigand
Unit Leader for Realty Unit

- b. The land is needed by a local government entity but does not meet the requirements of the R&PP Act.
- c. The land is difficult or uneconomical for BLM to manage or is not needed for any federal program.
- d. The land lies within an identified disposal area, as shown on Map BW-1.

Disposal by land exchange will be evaluated on a case-by-case basis. Priority will be given to acquiring areas that would improve manageability of public lands, protect or expand crucial wildlife habitat, or provide legal and/or physical access to streams, reservoirs, or tracts of public land. Priority areas to obtain private or state lands include: (1) Slaughterhouse-Upper Quigley Creek, (2) Camp Creek-Kelley Gulch, and (3) the deer migration route between Stanton Crossing and Warm Springs Landing.

Lands in the Ohio Gulch area may be disposed of for industrial development consistent with the local land use plan. Each proposal will be evaluated on a case-by-case basis. Access to public lands in Ohio Gulch and Indian Creek areas will be maintained.

Public lands with significant cultural resource values will be retained in public ownership.

Rationale

The major portions of the public lands in this unit contain many valuable public resources. These include crucial wildlife habitat, water production, recreation values, livestock forage, and minerals.

The lands that are to be disposed of are generally isolated tracts that have lower public values and are difficult to administer.

The flexibility for land exchange allows for enhancing the management of public lands in the public interest. It will allow for a more detailed look at each exchange proposal and an evaluation of detailed resource data, which are not available at this time.

The Ohio Gulch area is the location of the main Blaine County land fill, and is zoned for industrial development. The County government favors making this area available for industrial development. However, most of the potential is on state land.

Decision Number 2

Allow rights-of-way for utility and transportation purposes (both public and private), provided the uses comply with all requirements of this plan. Rights-of-way applications will be examined on a case-by-case basis to determine routes, impacts, and mitigating measures.

Rationale

The fast-growing population increases the need for utility and transportation rights-of-way. Locations for rights-of-way are not known at present. Each will be evaluated on its own merits.

Decision Number 3

Do not allow disposal of public lands that include flood plains, riparian areas, water frontage, and water sources, except for public uses consistent with the general management of the area and E.O. 11296 (see Appendix 2). However, the following parcels of land will be available for future material sales and free use permits:

NW4SW4 Section 13, T. 1 N., R. 18 E.
W2NW4 Section 24, T. 1 N., R. 18 E.

Rationale

Riparian areas are generally associated with spring areas and streams, all of which have high wildlife values. Flood plains may serve important hydrologic functions and generally are not suitable for private development. The material sale area is adjacent to existing private material sites and is in a broad alluvial flood plain on the Big Wood River. This section of the river is dry during the summer due to diversion for irrigation. Few wildlife values exist at the present time.

Decision Number 4

Remove all withdrawals from public lands administered by BLM. Obtain water rights on all public water reserves prior to revocation. Remove all classifications made under the authority of the Classification and Multiple Use Act.

Rationale

The Federal Land Policy and Management Act (FLPMA) provides adequate protection for the retention of these lands in federal ownership. The 3809 Surface Protection regulations provide for protection of the water and other resources.

Minerals

Decision Number 1

Grant geothermal or oil and gas lease applications, subject to local planning and zoning ordinances, environmental protection stipulations, and other legal or procedural requirements.

Rationale

This area has a good potential for geothermal resources and a low oil and gas potential. Stipulations will adequately protect the surface resources.

Decision Number 2

Establish community pits and free use permit areas, based on local needs, local planning and zoning ordinances, and BLM requirements.

- a. Develop Ohio Gulch as a major long-term source of gravel for the upper Wood River Valley. Continue the community pit, consistent with the existing mining plan.
- b. Develop the Townsend Gulch material site as a major source of decomposed granite for local government, compatible with local zoning and BLM requirements.

Rationale

The fast-growing population in Blaine County places a large requirement for mineral materials on this area. Decomposed granite is particularly needed for road sanding during the winter months to reduce the hazard of slick roads. Additional needs are for road maintenance and construction.

Decision Number 3

Protect paleontological and geological sites having scientific or educational values.

Rationale

Bureau policy requires the protection of these various resources. At the present time, there are few known paleontological or geological resource values in the area.

Decision Number 4

All areas within the unit will be open to mining exploration and development.

Rationale

This area has some known mineral values and should remain open to exploration. The Regulations will provide sufficient environmental protection for these areas.

Forest Products

Decision Number 1

Intensively manage areas capable of producing timber, Christmas trees, and other woodland products. This will include thinning, disease control, reforestation, and other practices. The following guidelines will be used for all timber harvesting except in case of fire, disease, insect, or other damage in areas where salvage is to be done.

- a. No clear cut will exceed 45 acres.
- b. Maximum clear-cut widths will be 1600 feet on big game winter range and 1000 feet on summer range.
- c. No timber harvest on crucial elk or deer winter range except in case of damage by disease, insects, fire, etc., or unless the harvest would be beneficial to the big game involved.
- d. Cut in a mosaic or mottled pattern.
- e. Strive for a ratio of 60 percent forage to 40 percent cover in harvested timber stands.
- f. Maintain snags for wildlife. An analysis of each timber stand to be harvested will be made to determine the number of snags necessary.
- g. Comply with the provisions of the Idaho Forest Protection Act.
- h. A 200-foot radius will be left around nests of sensitive bird species. Other nests will be protected to the extent practical.
- i. No timber cutting, except for salvage, will be made within the visual influence zone along the Sawtooth Scenic Route (State Highway 75).

In response to the Forest Land Policy Statement signed by Director Burford on 10/14/83 and Instruction Memorandum No. ID-84-65 it has been determined that 658 acres should be returned to the timber production base. These acres were reported in August 1982 as being totally restricted commercial forest lands. The restriction was "no timber harvest on crucial elk or deer winter range except in case of damage by disease, insects, fire, or unless the harvest would benefit the big game involved." This language is directly from the MFP decisions in the Sun Valley MFP. IM No. ID-84-65 contained guidelines that said "restrictions on timber harvest (e.g. percent canopy removal) may be needed to protect needed habitat for various big game species. Complete withdrawals from the CFL base should not be required for protection of winter range habitat." Our response dated January 4, 1984 identified the subject areas as being changed from total restriction to partial restriction under the new guidelines.

The following stands totalling 658 acres are considered a partially restricted portion of the timber production base. This does not conflict with MFP decisions.

Subunit/Block Stand Numbers

2404 0330 through 0400
2450 0410 and 0420

Ervin Cowley
Ervin Cowley, Monument Resource Area Manager

8/12/85
Date

Charles G. Haszler
Chuck Haszler, Shoshone District Manager

8/12/85
Date

Rationale

The timber stands in this area have a potential to produce needed timber, Christmas trees, posts and poles, and firewood. Future wood product needs will increase with the increasing population. The guidelines will prevent excessive damage to other resources.

Decision Number 2

Make areas available for small sales (less than \$500) of firewood, posts, and poles. These areas could include noncommercial stands, timber sale slash areas, and thinning or disease control areas where the harvested trees would otherwise not be merchantable.

Rationale

These wood products are in much demand in this area. The demand will continue to increase as the population increases.

Decision Number 3

Develop Christmas tree sale areas where suitable trees are available and harvesting can be closely controlled. Sell other vegetative products, such as cones, boughs, and cuttings, if a demand exists and such sale would be consistent with other management objectives.

Rationale

Demand exists for Christmas trees in this area, but there are insufficient trees to provide commercial numbers. Availability of Christmas trees and other forest products on public land is limited and would have to be closely controlled to avoid adverse effects on other resources.

Livestock Forage

Decision Number 1

Stock and manage the grazing allotments according to the proposed action in the Sun Valley Grazing Environmental Impact Statement, as summarized and updated in the Rangeland Program Summary (RPS). Tables from the current RPS are enclosed as Appendix 3, summarizing the stocking rates and other management. Grazing Management may be changed based on monitoring and/or

findings of environmental assessments, consistent with other provisions of this land use plan. Changes will be documented in revisions of the RPS.

Rationale

Livestock grazing is the major use within this analysis unit. It is a very important segment of the local economy, and can be managed for sustained yield and multiple use. The selected grazing management has been subjected to comprehensive analysis in an environmental impact statement, and is consistent with the public comments received.

Decision Number 2

Brush control, seeding, water developments, fencing, and other range improvements will be implemented as described in Table B, Appendix 3, contingent on sufficient funding levels. These improvements, and any others proposed, will be subject to an environmental assessment and cost-benefit analysis prior to final approval.

Rationale

Range improvements of all types are needed to improve range condition in some areas. These include livestock management facilities such as fences, water developments, and cattleguards, as well as land treatment.

Decision Number 3

Allotments may be divided or combined to meet the needs of the livestock industry and/or to improve livestock management.

Rationale

Changing requirements for livestock operators may require combining or splitting allotments for improved management of the range or to meet management objectives.

Decision Number 4

Conversions from sheep to cattle and from cattle to sheep will be allowed within the inventoried carrying capacity and will take into account range suitability, manageability, wildlife habitat, and other factors. An environmental assessment will be completed to evaluate the details of each specific proposal.

Rationale

There is a continuing trend to change livestock operations from sheep to cattle. Care must be taken to ensure the change from sheep to cattle will not damage the range or wildlife habitat. The range inventory takes into account suitability, palatability, and diet.

Decision Number 5

Increased forage will be allocated to livestock on a nonrenewable basis for a minimum of five years, during which monitoring must confirm the permanent nature of the forage before increasing the active preference.

Rationale

This procedure will allow monitoring of the increased stocking rate through utilization and trend studies. It will allow increased use with much more flexibility to evaluate the effects of the use.

Decision Number 6

Vegetation manipulation may be done under the following guidelines:

- a. Brush may not be removed in crucial elk or deer winter range unless an analysis indicates it will not adversely affect the elk or deer.
- b. In sage grouse areas, the Western States Sage Grouse Committee's guidelines will be used (see Appendix 1). Guidelines may be modified by local area, e.g., mosaic patterns within a two-mile radius of strutting grounds.
- c. Proposed treatments will be designed to have as little adverse impact on the visual resources as practical (see VRM for classes).
- d. Proposals to use chemical sprays will be cleared through applicable BLM requirements and reviewed by the Idaho Department of Fish and Game.

Rationale

Much of the vegetation manipulation will be accomplished with controlled burns or modified suppression plans. However, all other techniques of brush control are available to meet particular needs. The guidelines will minimize adverse impacts on other resources.

Watershed

Decision Number 1

Maintain sufficient vegetative cover to protect public lands from accelerated erosion. Minimize soil compaction and disturbance due to livestock grazing, timber harvest, and construction and maintenance of all facilities. Consider time of year for the use, select techniques that are less disturbing, etc.

Rationale

Most of this unit is hilly to mountainous. Because of the steep slopes, extreme care must be taken not to increase erosion and reduce productivity.

Decision Number 2

Minimize stream sedimentation by stabilizing deteriorating streambanks. Improve to at least fair condition all riparian areas, and reduce sediment from high source areas such as mine tailings, poorly located or designed roads, areas of active channelling, etc.

Rationale

There are several streams in the unit. Water quality is generally good. Most of the streams drain into irrigation reservoirs, and any increase in sedimentation will shorten the life span of the reservoirs. Many of the streams are also good fisheries, which would be adversely effected by sedimentation.

Decision Number 3

Protect all ground water recharge areas. Uses that would adversely affect ground water quality or quantity, or reduce artesian pressure, should be restricted.

Rationale

Ground water quality and quantity are important for irrigation and domestic use within and outside the unit.

Decision Number 4

Protect all developed springs from livestock use at the water source.

Rationale

These water sources are important for all of the public land uses. The protection of the source areas will make a more dependable water supply, protect important wildlife habitat, and reduce the likelihood of spreading disease in livestock.

Wildlife

Decision Number 1

Provide forage for big game animals as listed in Table BW-1 at the end of this section.

Rationale

This forage allocation will allow for an increase in big game numbers as projected by the Idaho Department of Fish and Game. The public lands only supply a proportionate share of the needed forage. The remainder will be produced by private and state lands. Competition for forage between big game and livestock is only about 7 percent based on dietary overlap.

Decision Number 2

Manage major deer migration routes to minimize impedance to big game. Facilities such as fences, right-of-way facilities, and buildings will be constructed in such a way as to have a minimal effect. Bureau fencing specifications will be used, which are designed to minimize impacts on big game habitat. Particular emphasis will be placed on maintaining the migration route between Stanton Crossing and Hot Springs Landing.

Rationale

The big game migration routes are important for the maintenance of healthy populations. These corridors can be managed with a minimal impact. The Stanton Crossing-Hot Springs Landing migration route is essential to the Picabo deer herd. Most of the deer that winter in the Picabo Hills migrate through this area during the spring and fall.

Decision Number 3

All crucial deer and elk ranges will be managed for the needs of the animals, within the allocation limit. Vegetation manipulation, including timber harvest, will only be done where there are minimal adverse impacts on the crucial habitat.

Rationale

All crucial habitats are essential for the survival of the expected populations. Disruption of these areas can cause severe hardships, including starvation, for the big game.

Decision Number 4

All seedings in wildlife areas will have a seed mixture that provides forbs and shrubs (if needed and adaptable) and a mixture of appropriate grasses.

Rationale

Seed mixtures, particularly with appropriate forbs and/or shrubs, will increase the value of the area for wildlife as well as increase livestock forage and stabilize soil conditions.

Decision Number 5

Riparian areas will be given special attention. All riparian areas in poor condition will be improved to at least fair condition. All others will be maintained or improved.

Rationale

Riparian areas are particularly important to a large number of wildlife species. These areas are also very productive for livestock forage and, if abused, can cause severe erosion and sedimentation problems.

Decision Number 6

Streams will receive special attention. Appropriate management techniques will be used to improve stream bank vegetation to at least fair to good condition.

The major streams are:

Big Wood River	Little Poison Creek	Quigley Creek
Camp Creek	Poison Creek	Rock Creek
Croy Creek	Little Beaver Creek	Kelley Creek
East Fork Big Wood River	Big Beaver Creek	

Rationale

Many of these streams presently have fish populations or have the potential for a fishery. The goal is to improve an area in poor condition or with erosion problems to improve habitat quality. All of these streams provide important water sources, and adjacent riparian areas provide important wildlife habitat.

Decision Number 7

Protect raptor habitat to the extent practical.

Rationale

Raptors are an important segment of the wildlife population. Some species are particularly sensitive to man's presence.

Areas of Critical Environmental Concern (ACEC)

Decision Number 1

The Big Beaver-Little Beaver Crucial Elk Winter Range will be managed as an ACEC. (see ORV #1) (wildlife decision #3)

Rationale

This area provides winter range that is crucial to the survival of one of the most productive elk herds in the state. Cow-calf ratios of 100:65 have been observed. Only positive comments were received on this proposal from the public contacts. This designation will give special attention to the area while maintaining multiple use and not putting unreasonable restrictions on the other users of the public lands.

Total acreage 6282.92
all public land
EC 6/6/89

Visual Resources Management (VRM)

Decision Number 1

Manage all areas along travel influence zones in a visual resource class III (see MFP 3 Overlay). Care will be taken to minimize visual impacts to the extent practical.

Rationale

These areas have moderate scenic quality, but have a number of existing man-made influences such as roads, power lines, and fences. Care will be given to minimize visual intrusions to the extent practical. This can include the location, shape, height, etc. of various improvements. Scenic Highway 75 courses north and south through the unit.

Decision Number 2

The remainder of the unit will be managed as a visual resource class IV. Care will be taken to reduce the adverse impacts to the extent practical.

Rationale

These areas have moderate to low scenic qualities. Although substantial detracton from the scenic quality is allowed, all work will be designed to reduce the adverse impacts.

Off-Road Vehicles (ORVs)

Decision Number 1

Designate the crucial elk and deer winter ranges shown on MFP 3 Overlay as "limited" for ORVs, to normally allow ORV use only from May 1 to November 30. Designate all other public lands as "open areas and trails," subject to adjustments for special needs identified in the future. Closures of small areas to eliminate resource damage may be implemented either by permanent or temporary designations. Permits may be issued for ORV events in winter ranges, provided the animals will not be stressed by the machines in the event.

Rationale

The areas designated as crucial wildlife winter ranges are essential to the survival of healthy herds. Disturbance during the winter months causes undue stress on the animals at this critical time of the year. Although there is some erosion hazard, there are very few ORV problems evident. Most of the use is over snow or on roads and trails. This may cause some problems for adjoining private landowners in the future; few problems exist at the present time.

Decision Number 2

Continue to recognize present uses of the Wood River Recreation Area^A by one of three methods: (1) Maintain the existing R&PP lease, (2) Encourage Blaine County to accept responsibility for the area, or (3) Return the area to BLM jurisdiction and manage it for the current recreational purposes.

*Special Recreation
Management
Area 1-228
20*

Rationale

This area provides for intensive ORV use and reduces pressure on other areas within the unit. This provides an area for many types of ORV events, reducing the need on adjoining public lands.

Recreation

Decision Number 1

Provide for all types of winter sports, including plowed access routes and parking, designated routes or trails, and restrictions. Develop proper guidelines for the particular type of sport, whether cross-country skiing or snowmobiling.

Rationale

The area provides potential for many types of winter sports. The greatest present demand is for snowmobile use. This use is causing minimal environmental problems.

Fire Management

Decision Number 1

Wildfires starting between June 1 and September 30 will be suppressed as quickly as possible. Modified suppression may be used during the rest of the year, based on the following considerations:

- a. Potential beneficial and adverse effects of the burn.
- b. Potential size of the fire.
- c. Cost of suppression.
- d. Existence of an adequate prescription.
- e. Monitoring of the fire from the initial report until it is out.
- f. Fuel type in which the fire is burning. Timber fires will be suppressed.

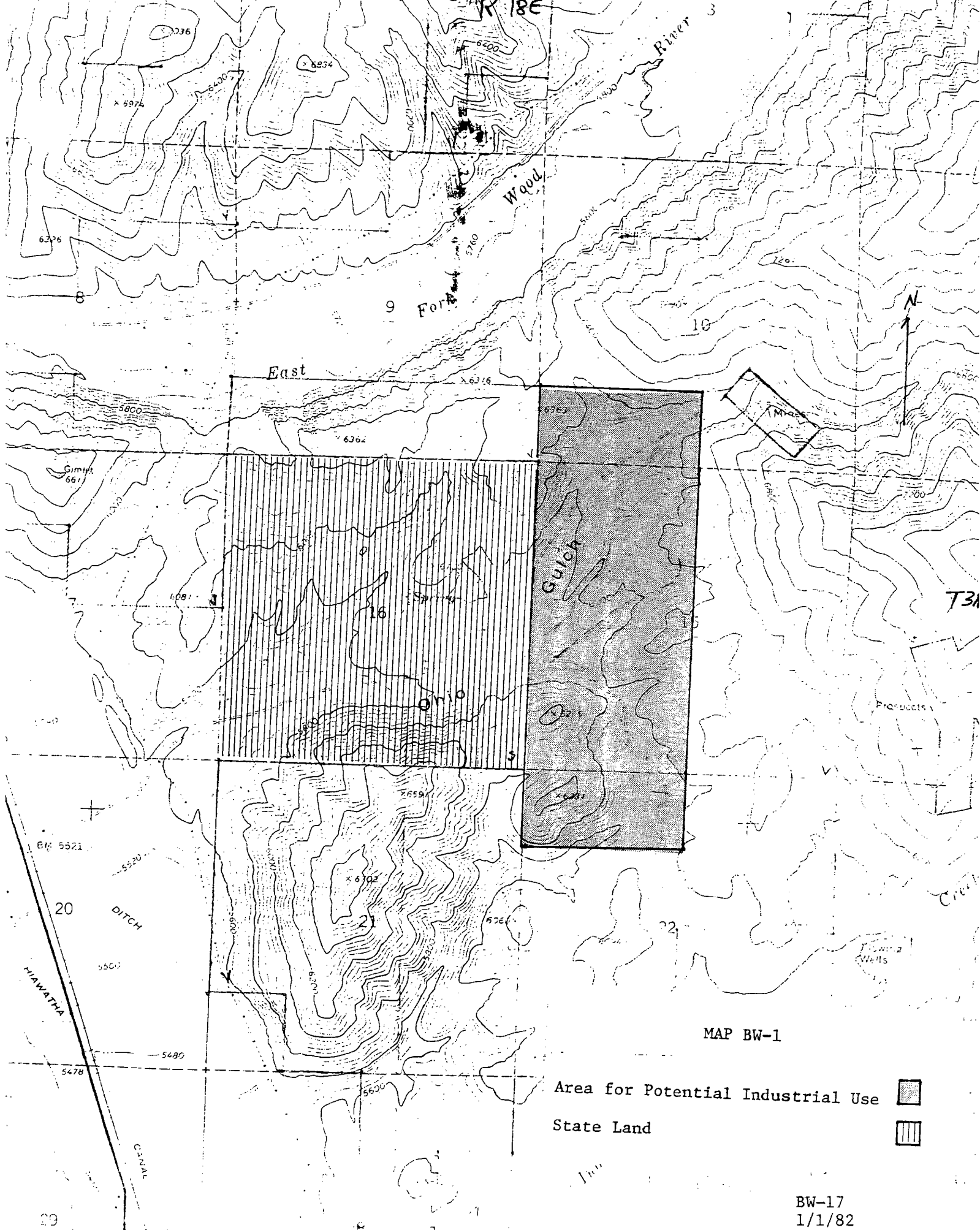
Rationale

Fall and spring burning can be very beneficial to certain values on public land, including forage production and diversity, wildlife habitat, watershed condition, etc. Generally, ridge tops become effective fire lines, preventing fires from getting larger. Cool nights help suppress fires in sagebrush communities.



TABLE BW-1

DEER AND ELK SEASONAL USE
BY GRAZING ALLOTMENT
ON PUBLIC LANDS IN THE BIG WOOD ANALYSIS UNIT

ALLOTMENT	DEER MONTHS	DEER MONTHS	DEER MONTHS	ELK MONTHS	ELK MONTHS
	SUMMER May 1-Oct 30	MIGRATION Apr 16-Apr 30 Nov 1- Nov 14	WINTER Nov 15-Apr 15	SUMMER May 1-Oct 30	WINTER Nov 15-Apr 15
Big Beaver	232	28	20		204
Brock Creek	15	6			
Bullion Gulch	136	56	51		
Camp Creek	266	112			
Cherry Creek	133	16	30	20	153
Colorado Gulch	77				
Courier	13				25
Cove	140		325		
Croy Creek	795	325	36		
Deer Creek (SV)	336		295		
Elkhorn	63				28
Hatty Creek	21	8			
Homestead	10	4			
Hyndman	8				31
Indian Creek	204		627		148
Kent Canyon	248	43			
Little Beaver	564	66		44	632
Little Rock Creek	60	25			
Lower Rock Creek	372	152	126		
Martin Canyon	171		300		430
McAtee	1				
Muldoon Canyon	152		1071		430
Poison Creek	463	204	195		30
Poverty Flat	11				
Quigley	134		341		135
Red Elephant	156	63			41
Rota Run	64		60		
Scattered Tracts	30	12			
Severe	24	3			
Shirley	10	4	37		15
Slaughterhouse	76		150		30
South East Fork	42				
Square Mountain	22				5
Timber Gulch	261		80		6
Upper Rock Creek	358				
Upper Slaughterhouse	22				
Water Gulch	16				
West Bellevue	516	211	613		
Wolfstone	31	12			
Totals	6253	1350	4357	64	2343



MAP BW-1

Area for Potential Industrial Use 
 State Land 

MULDOON ANALYSIS UNIT

DESCRIPTION

The Muldoon Analysis Unit contains the Little Wood River, Fish Creek, Lava Creek, Huff Creek, and Cottonwood Creek drainages. It is bounded on the north by the Sawtooth and Challis National Forests, on the east by the Little Lost River Divide and Craters of the Moon National Monument, on the south by U.S. Highways 93 and 20, and on the west by the Big Wood-Little Wood River drainage divide.

This unit is generally mountainous with rolling to steep terrain. Vegetation is sagebrush-grass with aspen and Douglas-fir in some of the more moist areas and north slopes. Numerous streams are in the unit ranging from very small to the Little Wood River, which is the largest.

The land ownership is very broken. Numerous parcels of private, state, and public land extend across the unit.

Major existing uses consist of livestock grazing, wildlife habitat, recreation, water production, and some minerals.

GENERAL MANAGEMENT PHILOSOPHY

This area will be managed for multiple use with livestock grazing, watershed protection, recreation, and wildlife habitat being the major uses.

SPECIFIC MANAGEMENT DECISIONS AND RATIONALES


Lands

Decision Number 1

Public lands having cultural resource values of National Register significance will be retained in federal or state ownership.

All other lands within this unit will be retained under BLM management except as follows:

- a. Lands may be disposed of under the Recreation and Public Purposes Act.

- 
- b. Lands within the designated disposal areas (see MFP overlay) may be disposed of.
 - c. Lands may be exchanged with the State of Idaho provided they include no crucial wildlife habitat. Priority areas to obtain State land are: (1) Dry Creek-Muldoon Canyon area, (2) Elk Mountain area, and (3) Friedman Creek area.
 - d. E2SE4SE4SE4, Section 1, T. 1 S., R. 21 E. (see Map M-1) is suitable for disposal through public sale.
 - e. Land exchange proposals by private landowners will be evaluated on a case-by-case basis. Priority will be given to obtaining areas that would improve manageability of public lands, protect or expand crucial wildlife habitat, or provide legal and/or physical access to streams, reservoirs, or tracts of public land.

Rationale

The major portions of the public lands in this unit contain many valuable public resources. These include crucial wildlife habitat, water production, recreation values, livestock forage, and many others.

The lands that are to be disposed of are generally isolated tracts that have lower public values and are difficult to administer.

The flexibility for exchange is built in to allow exchanging lands that would enhance the management of the public lands. It will allow for a more detailed look at each exchange proposal and an evaluation of the detailed resource data, which are not available at this time.

Lands described in section 1.d. are physically isolated below an irrigation canal and adjoin private land.

Decision Number 2

Allow rights-of-way for utility and transportation purposes (both public and private), provided the uses comply with all requirements of this plan. Rights-of-way applications will be examined on a case-by-case basis to determine routes, impacts, and mitigating measures.

Rationale

The Muldoon Analysis unit is not a fast-growing area. The need for utility and transportation rights-of-way will be small for the immediate future. However, this decision allows for meeting foreseeable public and private needs.

RMP MAINTENANCE SHEET

Plan Name Sun Valley MFP Area Monument RA

LOCATION OF CHANGE

Page No. M-2 Paragraph No. 1 Line No. 1

CHANGE

(Describe exactly what is to be deleted, added, rewritten, etc.)

Delete:

Insert:

REASON

(Describe exact rationale for above change to include reference material; i.e., EA, MFP, IM.)

T1N, R22E Sec 27: SWSW comprising 40 acres was sold at public sale (case no. IDI 20397).

SIGNATURE AS APPROPRIATE:

Program Leader _____ Date _____

Area Plan/Environmental Coordinator William H. [Signature] Date 11/2/90

Area Manager _____ Date _____

Decision Number 3

Communication sites may be allowed if consistent with other provisions of this plan, except within Wilderness Study Areas. Each site will be evaluated on a case-by-case basis.

Rationale

The need for communication sites is increasing. However, the locations needed to serve these needs are not known. Each proposed site will be evaluated on its own merits.

Decision Number 4

All withdrawals except the one on Bell Mountain (PLO 3543) will be removed from public lands administered by BLM. BLM will obtain water rights on all public water reserves prior to revocation. All classifications made under the authority of the Classification and Multiple Use Act will be removed.

Rationale

FLPMA provides adequate protection for the retention of these lands in federal ownership. The 3809 Surface Protection Regulations provide for protection of water resources.

Minerals

Decision Number 1

All areas within the unit will be open to mineral entry except:

- a. The Bell Mountain withdrawal area in T. 1 N., R. 20 E., Section 7, NE4NE4.
- b. Mining in the Friedman Creek Wilderness Study Area will be subject to the Interim Management Policy Guidelines until Congress makes a decision on whether or not to designate it as wilderness. The Little Wood River Wilderness Study Area, identified under the authority of Section 302 of the Federal Land Policy and Management Act, is not subject to the non-impairment policy for mining claims.

Rationale

Bell Mountain contains a fire lookout with public values and capital values of \$35,000. In addition, the Blaine County Sheriff's department has a vital communication link on the site with capital values in excess of \$20,000.

This area has some known mineral values and should remain open to exploration. The existing withdrawal, the Interim Management Policy, and the 3809 and 3802 Regulations will provide sufficient environmental protection to these areas.

Decision Number 2

All areas are open for mineral leasing with appropriate stipulations that are consistent with this plan.

Rationale

The area has potential value for geothermal resource but needs to be explored more to better define the value. A portion of the area is in the Overthrust Belt and is potentially valuable for oil and gas.

Decision Number 3

Mineral material sales and free use permits will be evaluated on a case-by-case basis. They may be allowed if consistent with this plan.

Rationale

The need of local and state governments for materials has been steady over the past few years, and is expected to continue. The location and quality of material sites are not known in detail and must be evaluated.

Forest Products

Decision Number 1

Intensively manage areas that are capable of timber production. Use the following guidelines for all timber harvesting except sanitation cuts to

control disease or insect damage to trees and salvage sales in case of fire, disease, insect or other major tree kills.

Timber Harvest Guidelines

- a. No clear cut will exceed 45 acres.
- b. Maximum clear cut widths will be 1600 feet on big game winter range and 1000 feet on summer range.
- c. No timber harvest on crucial elk or deer winter range except in case of significant damage by disease, insects, fire, etc., or unless the harvest would be beneficial to the big game involved.
- d. Cut in a mosaic or mottled pattern.
- e. Strive for a ratio of 60 percent forage to 40 percent cover in harvested timber stands.
- f. Maintain snags for wildlife. Each timber stand to be harvested will be evaluated and guidelines will be developed for maintaining sufficient snags.
- g. Comply with the provisions of the Idaho Forest Protection Act.
- h. A 200-foot radius will be left around nests of sensitive bird species. All raptor nests will be protected to the extent practicable.

Rationale

Although there is a limited amount of timber and no ready market at the present time, these stands are capable of providing wood products, including saw timber. Some of these stands are stagnant, and thinning will increase production.

Decision Number 2

Firewood, Christmas trees, posts, poles, and other woodland products will be sold by vegetative permits. These sales will be evaluated on a case-by-case basis.

Rationale

The availability and demand for forest products has been small. It will probably increase, especially for firewood, posts and poles, and Christmas trees. The timber products can be used on a managed basis and can meet

some of these public needs. These needs will be local in nature because of the distance to the larger population areas and the limited quantities of products available.

Livestock Forage

Decision Number 1

Stock and manage the grazing allotments according to the proposed action in the Sun Valley Grazing Environmental Impact Statement, as summarized and updated in the Rangeland Program Summary (RPS). Tables from the current RPS are enclosed as Appendix 3, summarizing the stocking rates and other management. Changes in grazing management may be made based on monitoring and/or findings of environmental assessments, consistent with other provisions of this land use plan. Changes will be documented in revisions of the RPS.

Rationale

Livestock grazing is the major use within this analysis unit. It is a very important segment of the local economy, and can be managed for sustained yield and multiple use. The selected grazing management has been subjected to comprehensive analysis in an environmental impact statement, and is consistent with the public comments received.

Decision Number 2

Brush control, seeding, water developments, fencing, and other range improvements will be implemented as described in Table C in Appendix 3, contingent on sufficient funding levels. These improvements, and any others proposed, will be subject to an environmental assessment and cost-benefit analysis prior to final approval.

Rationale

Range improvements of all types are needed to improve range condition in some areas. These include livestock management facilities such as fences, water developments, and cattleguards, as well as land treatment.

Decision Number 3

Allotments may be divided or combined to meet the needs of the livestock industry and/or to improve livestock management.

Rationale

Changing requirements for livestock operators may require combining or splitting allotments for improved management of the range or to meet management objectives.

Decision Number 4

Conversions from sheep to cattle and from cattle to sheep will be allowed within the inventoried carrying capacity and will take into account range suitability, manageability, wildlife habitat, and other factors. An environmental assessment will be completed to evaluate the details of each specific proposal.

Rationale

There is a continuing trend to change livestock operations from sheep to cattle. Care must be taken to ensure the change from sheep to cattle will not damage the range or wildlife habitat. The range inventory takes into account suitability, palatability, and diet.

Decision Number 5

Increased forage will be allocated to livestock on a nonrenewable basis for a minimum of five years, during which monitoring must confirm the permanent nature of the forage before increasing the active preference.

Rationale

This procedure will allow monitoring of the increased stocking rate through utilization and trend studies. It will allow increased use with much more flexibility to evaluate the effects of the use.

Decision Number 6

Vegetation manipulation may be done under the following guidelines:

- a. Brush may not be removed in crucial elk or deer winter range unless an analysis indicates it will not adversely affect the elk or deer.

- b. In sage grouse areas, the Western States Sage Grouse Committee's guidelines will be used (see Appendix 1). Guidelines may be modified by local area, e.g., mosaic patterns within a two-mile radius of strutting grounds.
- c. Proposed treatments will be designed to have as little adverse impact on the visual resources as practical (see VRM for classes).
- d. Proposals to use chemical sprays will be cleared through the applicable BLM requirements and reviewed by the Idaho Department of Fish and Game.

Rationale

Much of the vegetation manipulation will be accomplished with controlled burns or modified suppression plans. However, all other techniques of brush control are available to meet particular needs. The guidelines will minimize adverse impacts on other resources.

Decision Number 7

That portion of the NE 1/4, Section 28, T. 2 N., R. 24 E., draining into the Craters of the Moon National Monument, will be closed to grazing (see Map M-2).

Rationale

This drainage supplies water to the Craters of the Moon National Monument domestic water supply. It is difficult to control grazing in this area. No adjustment in AUMs will be needed because the area is small. Closing the area to grazing will help protect the water quality.

Watershed

Decision Number 1

Maintain sufficient vegetative cover to protect public lands from accelerated erosion. Minimize soil compaction and disturbance due to livestock grazing, timber harvest, and construction and maintenance of all facilities. Consider time of year for the use, select techniques that are less disturbing, etc.

Rationale

Most of this unit is hilly to mountainous. Because of the steep slopes, extreme care must be taken not to increase erosion and reduce productivity.

Decision Number 2

Minimize stream sedimentation by stabilizing deteriorating streambanks. Improve to at least fair condition all riparian areas, and reduce sediment from high source areas such as mine tailings, poorly located or designed roads, areas of active channelling, etc.

Rationale

There are several streams in the unit. Water quality is generally good. Most of the streams drain into irrigation reservoirs, and any increase in sedimentation will shorten the life span of the reservoirs. Many of the streams are also good fisheries, which would be adversely effected by sedimentation.

Decision Number 3

Protect all ground water recharge areas. Uses that would adversely affect ground water quality or quantity, or reduce artesian pressure, should be restricted.

Rationale

Ground water quality and quantity are important for irrigation and domestic use within and outside the unit.

Decision Number 4

Protect all developed springs from livestock use at the water source.

Rationale

These water sources are important for all of the public land uses. The protection of the source areas will make a more dependable water supply, protect important wildlife habitat, and reduce the likelihood of spreading disease in livestock.

Wildlife

Decision Number 1

Provide forage for big game animals as listed in Table M-1.

Rationale

This forage allocation will allow for an increase in big game numbers as projected by the Idaho Department of Fish and Game. The public lands only supply a proportionate share of the needed forage. The remainder will be produced by private and state lands. Competition for forage between big game and livestock is only about 7 percent based on dietary overlap.

Decision Number 2

Manage major deer migration routes to minimize impedance to big game. Facilities such as fences, right-of-way facilities, and buildings will be constructed in such a way as to have a minimal effect. Bureau fencing specifications will be used, which are designed to minimize impacts on big game habitat.

Rationale

The big game migration routes are important for the maintenance of healthy populations. These corridors can be managed for big game with a minimal impact to other resources.

Decision Number 3

All crucial deer and elk ranges will be managed for the needs of the animals, within the allocation limit. Vegetation manipulation, including timber harvest, will only be done where there are minimal adverse impacts on the crucial habitat.

Rationale

All crucial habitats are essential for the survival of the expected populations. Disruption of these areas can cause severe hardships, including starvation, for the big game.

Decision Number 4

All seedings in wildlife areas will have a seed mixture that provides forbs and shrubs (if needed and adaptable) and a mixture of appropriate grasses.

Rationale

Seed mixtures, particularly with appropriate forbs and/or shrubs, will increase the value of the area for wildlife as well as increase livestock forage and stabilize soil conditions.

Decision Number 5

Riparian areas will be given special attention. All riparian areas in poor condition will be improved to at least fair condition. All others will be maintained or improved.

Rationale

Riparian areas are particularly important to a large number of wildlife species. These areas are also very productive for livestock forage and, if abused, can cause severe erosion and sedimentation problems.

Decision Number 6

Streams will receive special attention. Appropriate management techniques will be used to improve stream bank vegetation to at least fair to good condition. The major streams are:

Argásy Creek	Lava Creek	Sheep Creek
Cold Spring Creek	Lime Creek	Silver Creek
Copper Creek	Little Fish Creek	Spring Creek
Left Fork of Copper Creek	Little Wood River	Thompson Creek
Fish Creek	Long Canyon	Timber Gulch Creek
Fisher Canyon	Muldoon Creek	Trail Creek
Friedman Creek	Porkupine Creek	

Rationale

Many of these streams presently have fish populations or have the potential for a fishery. The goal is to improve an area in poor condition or with

erosion problems to improve habitat quality. All of these streams provide important water sources, and adjacent riparian areas provide important wildlife habitat.

Decision Number 7

Protect raptor habitat to the extent practical.

Rationale

Raptors are an important segment of the wildlife population. Some species are particularly sensitive to man's presence.

Areas of Critical Environmental Concern (ACEC)

Decision Number 1

The Elk Mountain Crucial Elk Winter Range will be managed as an ACEC. The major management concern is protection of winter habitat for elk; however, all present uses of the area will be continued unless significant impacts are identified. Increases or changes in use may be denied if they would be detrimental.

Acreage	Public	7753.89
	State	1613.14
	Private	<u>2520.27</u>
Total		11,887.25 <i>ee</i>

6/6/84

Rationale

The Elk Mountain area is a crucial elk winter range for a large, productive herd of elk. The habitat conditions are good at the present time. Only positive comments were received from the public contacts. The special designation will give special attention to the area while maintaining multiple use and without putting unreasonable restrictions on the other users of the public lands.

Visual Resources Management (VRM)

Decision Number 1

Manage all areas along a travel influence zone in a visual resource class III (see MFP 3 Overlay).

Rationale

These areas have scenic quality, but include a number of existing man-made influences such as roads, power lines, and fences. Some of the areas are in general view from the Craters of the Moon National Monument. This class allows for some modification, but much care will be taken to minimize any visual impacts. Mitigating measures include the location, shape, height, etc. of various improvements.

Decision Number 2

The remainder of the unit will be managed in a visual resource class IV (see MFP Overlay), except for wilderness study areas, which are managed as VRM Class I. Care will be taken to minimize the adverse impacts to the extent practicable.

Rationale

This unit has moderate to low scenic qualities. Although substantial de-
traction from the scenic quality is allowed, all work will be designed to
reduce the adverse impacts. BLM policy requires that WSAs be in Class I.

Off-Road Vehicles (ORVs)

Decision Number 1

The Elk Mountain Crucial Elk Winter Range and ACEC will be closed to ORV use.

Rationale

This is a roadless area and a portion is presently in Wilderness Study Area status. The area is steep with a severe erosion hazard, which would result in increased erosion if ORVs are allowed. Winter closure will protect wintering elk from disturbance.

Decision Number 2

Designate all other crucial big game ranges as "limited" for ORVs. Normally allow ORV use only from May 1 to November 30. However, these

areas may be evaluated for permitted events, and if no adverse impacts are anticipated, a permit may be issued.

Rationale

Disturbance of big game when under stress of winter conditions is particularly hard on the animals. Events may be allowed if it is determined that the animals are not along the course or will not be disturbed. Should problems arise, appropriate action will be taken.

Decision Number 3

The Dry Creek Springs area will be limited to designated roads and trails and open to over-snow vehicles.

Rationale

The Dry Creek Spring area is an area of known and/or suspected archaeological values. Using the designated roads will minimize impacts, and over-snow vehicles will have no impact on these values.

Decision Number 4

The Friedman Creek area will be limited to designated roads and trails and over-snow vehicles.

Rationale

The Friedman Creek area has few roads in it and contains scenic and wildlife values. Over-snow vehicles will not damage the area.

Decision Number 5

The remainder of the unit will be open to ORVs.

Rationale

The rest of the unit will be monitored to determine if any significant problems develop in the future. No problems presently exist.

Recreation

Decision Number 1

Provide for all types of winter sports, including plowed access routes and parking, designated routes or trails, and restrictions. Develop proper guidelines for the particular type of sport, whether cross-country skiing or snowmobiling.

Rationale

The area provides potential for many types of winter sports. The greatest present demand is for snowmobile use. This use is causing minimal environmental problems.

Cultural Resources

Decision Number 1

The Dry Creek Springs area is recognized as an area of cultural resource values. This is an area of concentrated, potentially valuable cultural resources. Particular attention will be paid to the cultural resource values in this area.

Rationale

The Dry Creek Spring area has a concentration of cultural resources and needs particular attention to protect these resources.

Fire Management

Decision Number 1

Wildfires starting between June 1 and September 30 will be suppressed as quickly as possible. Modified suppression may be used during the rest of the year and will consider:

- a. Potential effects of the burn including beneficial and adverse.
- b. Potential size of the fire.

- c. Cost of suppression.
- d. An adequate prescription
- e. Monitoring of the fire from the initial report until it is out.
- f. Fuel type in which the fire is burning. Timber fires will be suppressed.

Rationale

Fall and spring burning can be very beneficial to forage production and diversity, wildlife habitat, watershed condition, etc. Generally ridge tops become effective fire lines, preventing fires from getting larger. Cool nights help suppress fires in the sagebrush communities.

TABLE M-1
 DEER, ELK, AND ANTELOPE SEASONAL USE
 BY GRAZING ALLOTMENT
 ON PUBLIC LANDS IN THE MULDOON ANALYSIS UNIT

Allotment	DEER MONTHS SUMMER	DEER MONTHS MIGRATION	DEER MONTHS WINTER	ELK MONTHS SUMMER	ELK MONTHS WINTER	ANTELOPE MONTHS SUMMER
	May 1-Oct 30	Apr 16-Apr 30 Nov 1-Nov 14	Nov 15-Apr 15	May 1 Oct 30	Nov 15-Apr 14	Mar 1-Sept 30
Baird	66					45
Baptie	91	10				59
Barton	101					
Cottonwood	406					
Crater	396					
Dry Creek	1098	171	2773			
East Fork	604		19			12
Elk Mountain	116			3	64	
Flat Top Sheep Co.	3211		500			
West Pasture		204				286
East Pasture						495
H & S	61					
Hailey Creek	302	36				
Iron Mine	827					
Lava Lake	884					176
Little	58	7				
Little Fish Creek	131					37
Little Wood	366	43		14	349	
McFarland	70					
Muldoon	616	72		7	166	43
North 40	15					10
Queens Crown	12	49	3469			
Road Canyon	482					
Rocky Bar	73	10				41
Shale	34					20
Sheep Creek	488	59		10	235	
Silver Creek		39	98			
Simpson	12					
South 120	12					
Spring Creek	180	20		4	99	
Stocking	235					
Telfer	18					
Timber Butte	613		318			192
Trail Creek	290					
Upper Fish Creek	192					
West Fork Fish Creek	143					7
Woodbury	88					
Totals	12291	739	7158	38	913	1423

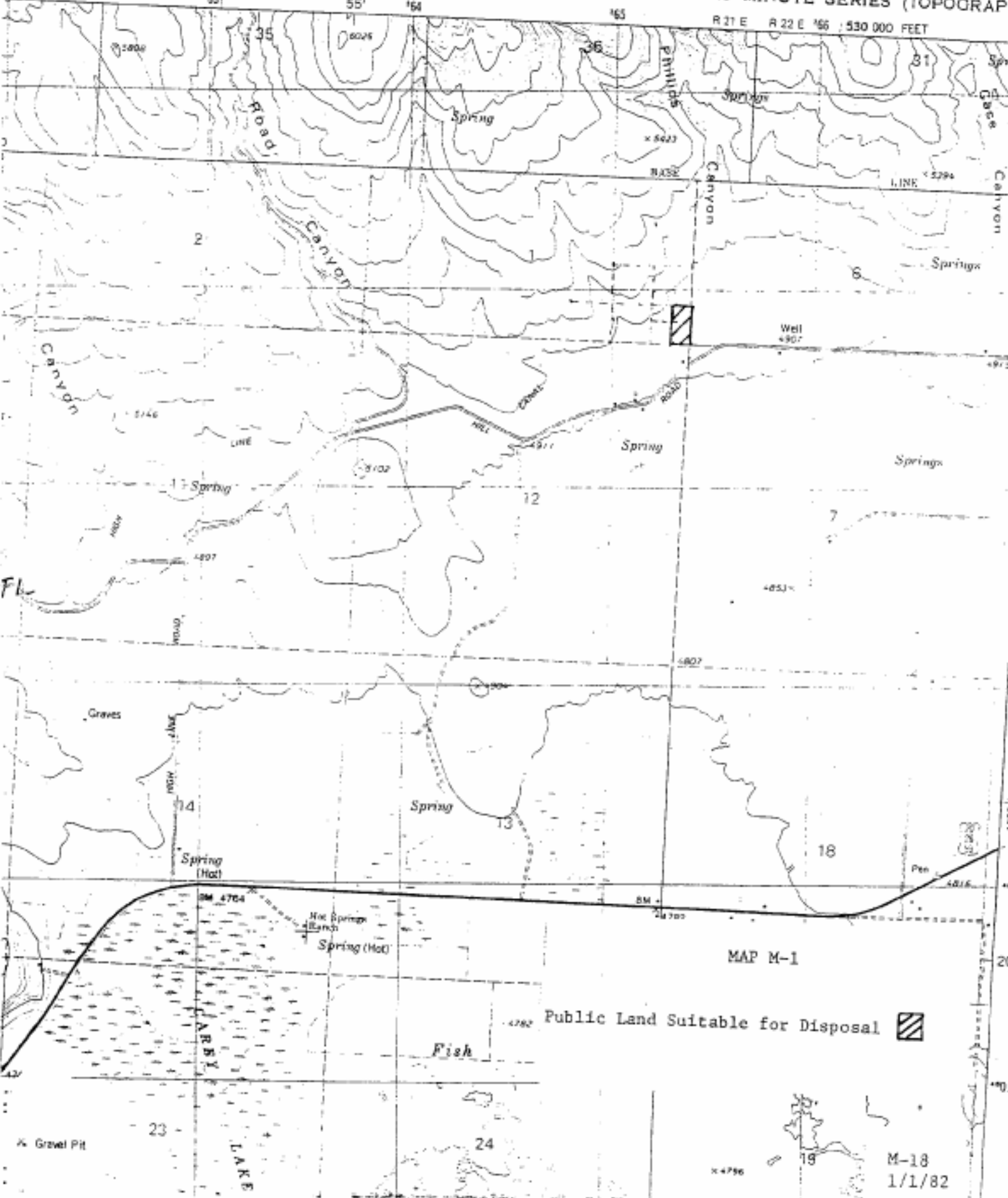
CAREY QUADRANGLE

IDAHO-BLAINE CO.


7.5 MINUTE SERIES (TOPOGRAPHIC)

R 21 E R 22 E 166 530 000 FEET

78 IV NW
CE HILLS



MAP M-1

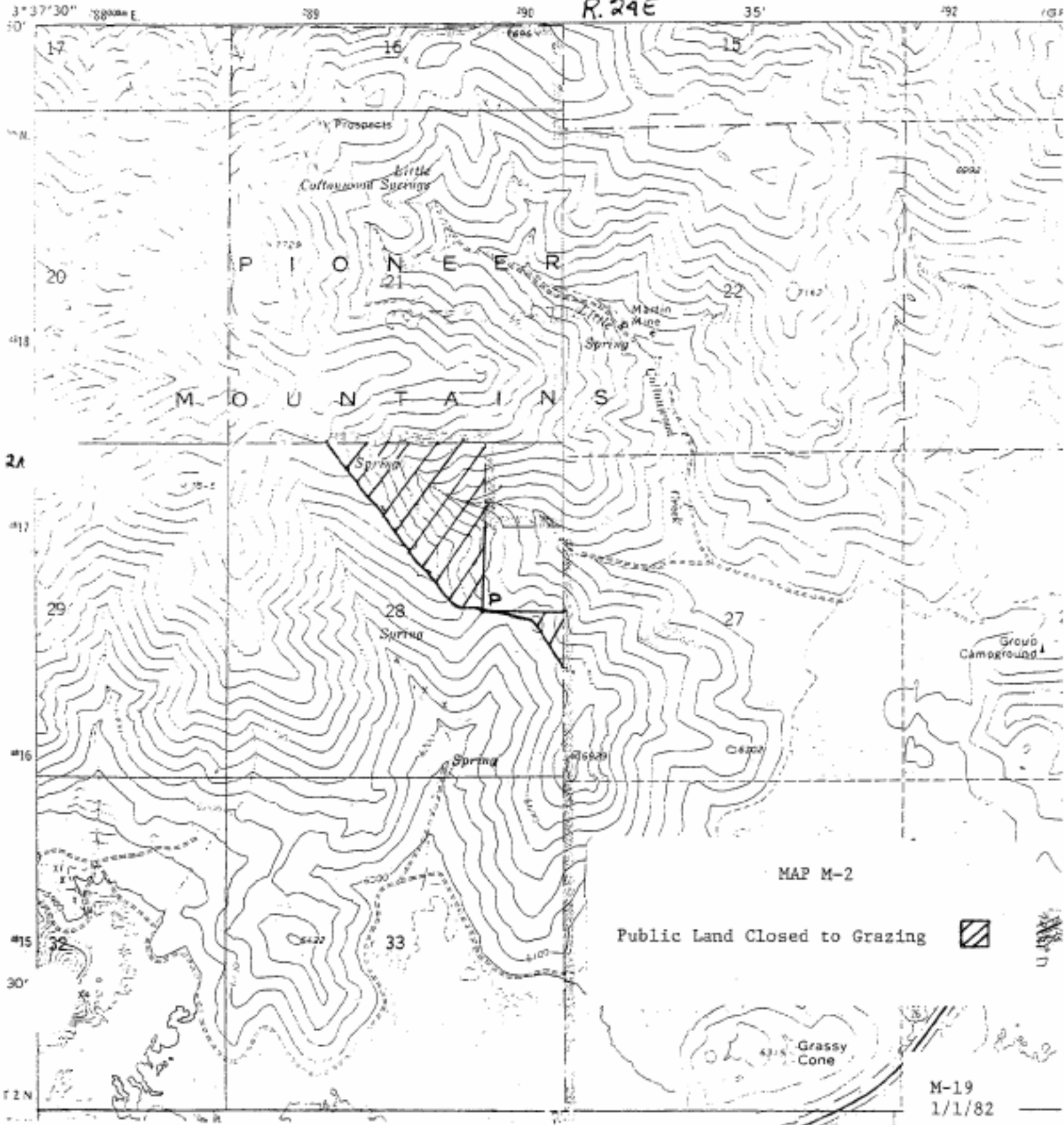
Public Land Suitable for Disposal 

* Gravel Pit

M-18
1/1/82

UNITED STATES
DEPARTMENT OF THE INTERIOR
GEOLOGICAL SURVEY

R. 24E

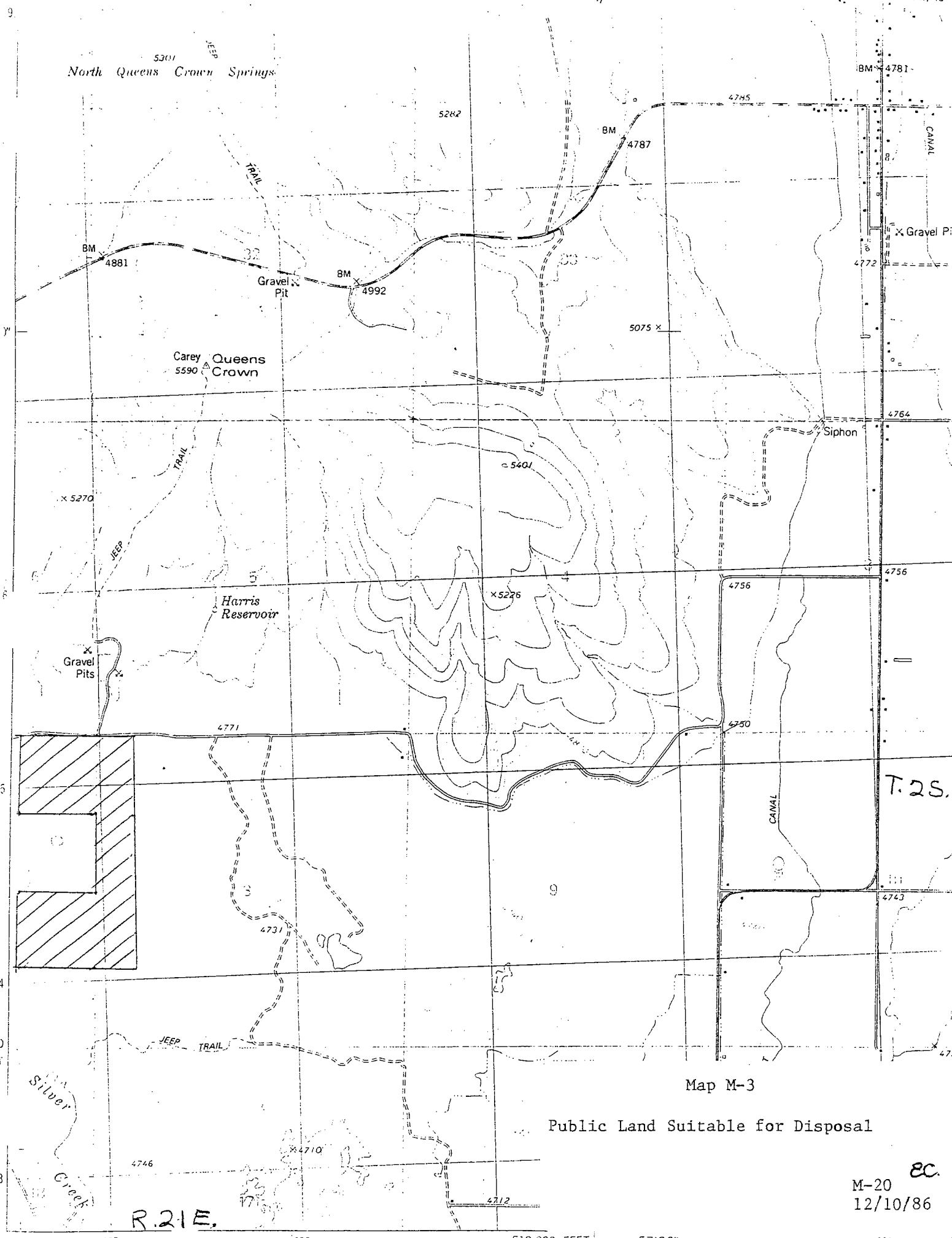


MAP M-2

Public Land Closed to Grazing



M-19
1/1/82



Map M-3

Public Land Suitable for Disposal

M-20 EC
12/10/86

R.21E.

APPENDIX 1

HABITAT MANAGEMENT GUIDES

Decisions to control and/or eradicate sagebrush should not be made until full consideration of all land use values has been given and it has been determined that sagebrush control is necessary to achieve specific high priority management goals.

The following recommendations for management of sage grouse habitat are those that are considered essential to maintain crucial habitats. The suggested procedures are primarily those that have been approved by the Western Association of Fish and Game Commissioners and that have been formulated to minimize the detrimental effects of sagebrush control on the sage grouse resource (Braun et al. 1977).

Project Coordination

1. BLM should notify the state wildlife agency of each specific proposal to control sagebrush or other vegetation a minimum of 2 years in advance of treatment. In situations where it is not possible to provide such notice, the state wildlife agency should be notified as soon as the project is proposed. An adequate amount of lead time is necessary to properly evaluate control projects during all seasons of the year.
2. BLM should provide the state wildlife agency with detailed maps on which the proposed areas to be treated are located and defined along with detailed plans as to the type of treatment and expected results.
3. The state wildlife agency will be expected to plot sage grouse use areas on the maps furnished, to include: (1) strutting grounds (leks), (2) nesting areas, (3) meadows and summer range or brood areas, and (4) wintering sites.
5. No sagebrush should be treated or removed until a comprehensive multiple-use management plan (MFP) has been formulated for the area.
6. Project plans for sagebrush control should include provisions for long-term quantitative and qualitative measurements of vegetation before and after control to acquire data on the effects of wildlife habitat, and to ascertain whether the objectives of the project were accomplished. The BLM should bear the responsibility for evaluation of the project as it relates to changes in habitat, while the state wildlife agency should assume the responsibility of measuring the effects of the project on the sage grouse. The results should then be exchanged and a joint evaluation accomplished.

Project Implementation

1. No control work should be considered where live sagebrush cover is less than 20 percent, or on steep (20 percent or more gradient) upper slopes with skeletal soils where big sagebrush (Artemisia tridentata) is 12 inches (30 cm) or less in height.
2. The breeding complex (strutting grounds, or leks, and nesting areas) should be considered as all lands within a 2 mile (3 km) radius of an occupied lek (in some situations, depending on the quality of the nesting habitat, this radius may well exceed 2 miles). Control of vegetation within the breeding complex should not be undertaken within 2 miles of leks, or on nesting and brood areas. On-site investigations by the Bureau and state wildlife agency personnel is essential in determining inviolate areas. Areas to be protected from treatment must be clearly defined on the project maps.
3. No control of sagebrush should be considered in any area known to have supported important wintering concentrations of sage grouse within the past 10 years.
4. No control should be attempted along streams, meadows, or secondary drainages (dry and intermittent). A 100-yard strip (minimum) of living sage should be retained on each edge of meadows and drainages. During the on-site inspection BLM and state wildlife agency personnel will assess the desirability of increasing or decreasing the width of untreated strips in specific areas.
5. When sagebrush control is found to be unavoidable in sage grouse range, all treatment measures should be applied in irregular patterns using topography and other ecological considerations to minimize adverse effects to the sage grouse resource. Widths of treated and untreated areas can vary for the convenience of application technique; except, treated areas should not be wider than 100 feet (30 m) and untreated areas will be at least as wide as treated areas. The untreated areas should not be treated until food and cover plants in the treated areas attain comparable composition to that of the untreated areas.
6. Where possible, spraying should be done with a helicopter or ground equipment. No spraying should be done when wind velocity exceeds 6 or 7 miles per hour (10 km/hr).
7. Whenever possible, complete kill or removal of sagebrush in treated areas should be avoided. Partial kill or removal of sagebrush may enhance the area for livestock, prevent loss of all snow cover in winter and allow for some use of the disturbed area by sage grouse.
8. Sagebrush treatment should be confined to only the most productive sites where the greatest favorable returns can be expected.
9. When exceptions to the above guidelines occur, sound biological judgement should be used to arrive at appropriate recommendations. Each individual situation should be carefully investigated and analyzed before arriving at the final decision.

Livestock Management

1. Every effort should be made to delay sheep bands from utilizing known sage grouse nesting areas until about the first week in June, or until young sage grouse have hatched in the particular locality. Domestic sheep are known to have caused considerable nest abandonment around bedgrounds, in trailing areas, and during normal feeding (Patterson 1952).
2. Cattle are generally not considered to cause nest desertion or nest trampling.
3. Livestock should not be permitted to heavily use known important sage grouse wintering areas. Heavy utilization may leave inadequate forage for sage grouse, but will depend on size of the wintering area and amount of sagebrush, depth of snow, and severity of the winter.
4. Grazing and browsing by livestock is an accepted use of sagebrush range. However, this use should be carefully controlled to encourage maximum forage productivity and to prevent range deterioration.

Fire Management

1. Where fire is used as a habitat management tool, it should be used in such manner as to result in a mosaic pattern of shrubs and open areas, with openings being from 1 to 10 acres in size.
2. Large, hot fires may remove an excessive amount of cover or may sterilize the soil and should be avoided.
3. Burning within an area should be done on a rotational basis, burning different patches every few years, possibly with as long as 20 years between burning treatments on each site. This will produce a diversity of habitat within the general area.
4. Do not burn winter sagebrush habitats that have been identified as important wintering sites. In such areas the grouse are dependent on the leaves of sagebrush, not the potential development of grass and forbs in the understory or interspersed openings.
5. Fire is an inexpensive tool that may be used for habitat manipulation but all projects must be carefully planned and supervised.
6. Use of fire should be avoided during the spring and summer when it could destroy many small nesting birds, small mammals, snakes, etc., as well as young sage grouse.
7. Fire is a natural element that has occurred on deserts and prairies for eons of time and to which most animals have become adapted over the centuries. Many of our present native environments are really disclimaxes that have resulted from natural fires. When properly used and managed, it can be successfully utilized in perpetuating the kinds of habitats that are essential to many different forms of wildlife.

APPENDIX 2

EXECUTIVE ORDER 11296--EVALUATION OF FLOOD HAZARD IN LOCATING FEDERALLY OWNED OR FINANCED BUILDINGS, ROADS, AND OTHER FACILITIES, AND IN DISPOSING OF FEDERAL LANDS AND PROPERTIES

SOURCE: Executive Order 11296 appears at 31 F.R. 10663, Aug. 11, 1966.

WHEREAS uneconomic uses of the Nation's flood plains are occurring and potential flood losses are increasing despite substantial efforts to controls floods; and

WHEREAS national and regional studies of areas and property subject to flooding indicate a further increase in flood damage potential and flood losses, even with continuing investment in flood protection structures; and

WHEREAS the Federal Government has extensive and continuing programs for the construction of buildings, roads, and other facilities and annually disposes of thousands of acres of Federal lands in flood hazard areas, all of which activities significantly influence patterns of commercial, residential, and industrial development; and

WHEREAS the availability of Federal loans and mortgage insurance and land use planning programs are determining factors in the utilization of lands:

NOW, THEREFORE, by virtue of the authority vested in me as President of the United States, it is hereby ordered as follows:

SECTION 1. The heads of the executive agencies shall provide leadership in encouraging a broad and unified effort to prevent uneconomic uses and development of the Nation's flood plains and, in particular to lessen the risk of flood losses in connection with Federal lands and installations and federally financed or supported improvements. Specifically:

(1) All executive agencies directly responsible for the construction of Federal buildings, structures, roads, or other facilities shall evaluate flood hazards when planning the location of new facilities and, as far as practicable, shall preclude the uneconomic, hazardous, or unnecessary use of flood plains in connection with such facilities. With respect to existing Federally owned properties which have suffered flood damage or which may be subject thereto, the responsible agency head shall require conspicuous delineation of past and probable flood heights so as to assist in creating public awareness of and knowledge about flood hazards. Whenever practical and economically feasible, flood proofing measures shall be applied to existing facilities in order to reduce flood damage potential.

(2) All executive agencies responsible for the administration of Federal grant, loan, or mortgage insurance programs involving the construction of

buildings, structures, roads, or other facilities shall evaluate flood hazards in connection with such facilities and, in order to minimize the exposure of facilities to potential flood damage and the need for future Federal expenditures for flood protection and flood disaster relief, shall, as far as practicable, preclude the uneconomic, hazardous, or unnecessary use of flood plains in such connection.

(3) All executive agencies responsible for the disposal of Federal lands or properties shall evaluate flood hazards in connection with lands or properties proposed for disposal to non-Federal public instrumentalities or private interests and, as may be desirable, in order to minimize future Federal expenditures for flood protection and flood disaster relief and as far as practicable, shall attach appropriate restrictions with respect to uses of the lands or properties by the purchaser and his successors and may withhold such lands or properties from disposal. In carrying out this paragraph, each executive agency may make appropriate allowance for any estimated loss in sales price resulting from the incorporation of use restrictions in the disposal documents.

(4) All executive agencies responsible for programs which entail land use planning shall take flood hazards into account when evaluating plans and shall encourage land use appropriate to the degree of hazard involved.

SEC. 2. As may be permitted by law, the head of each executive agency shall issue appropriate rules and regulations to govern the carrying out of the provisions of Section 1 of this order by his agency.

SEC. 3. Requests for flood hazard information may be addressed to the Secretary of the Army or, in the case of lands lying in the basin of the Tennessee River, to the Tennessee Valley Authority. The Secretary or the Tennessee Valley Authority shall provide such information as may be available, including requested guidance on flood proofing. The Department of Agriculture, Department of the Interior, Department of Commerce, Department of Housing and Urban Development, and Office of Emergency Planning, and any other executive agency which may have information and data relating to floods shall cooperate with the Secretary of the Army in providing such information and in developing procedures to process information requests.

SEC. 4. Any requests for appropriations for Federal construction of new buildings, structures, roads, or other facilities transmitted to the Bureau of the Budget by an executive agency shall be accompanied by a statement by the head of the agency on the findings of his agency's evaluation and consideration of flood hazards in the development of such requests.

SEC. 5. As used in this order, the term "executive agency" includes any department, establishment, corporation, or other organizational entity of the executive branch of the Government.

SEC. 6. The executive agencies shall proceed immediately to develop such procedures, regulations, and information as are provided for in, or may be necessary to carry out, the provisions of Sections 1, 2, and 3 of this order. In other respects this order shall take effect on January 1, 1967.

APPENDIX 3

TABLE A
GRAZING MANAGEMENT FOR THE NORTH CAMAS ANALYSIS UNIT

Allotment	Kind of Livestock	Present Preference (AUMs)	New Preference		Grazing Season	Grazing System	Improvements Needed to Implement Grazing System
			Active (AUMs)	Suspended (AUMs)			
Base Line <u>1/</u>	Cattle	138	138	---	7/20 to 9/15	Deferred Rotation	Springs/2 each
Camas <u>2/</u>				See	Fairfield	Allotment	
Cow Creek <u>1/</u>	Sheep Cattle	134 ---	---	---	6/16 to 10/31	Deferred Rotation	Reservoir/1 each
Deer Creek (NC)	Cattle	421	421	---	6/16 to 8/31	Deferred Rotation	Fence/3.0 miles
Ear Creek <u>1/</u>	Cattle	388	388	---	6/1 to 10/15	Rest Rotation	Fence/1.0 miles
Elk Creek	Cattle	222	88	134	6/1 to 10/15	Deferred Rotation	Springs/2 each Fence/1.5 miles
Fairfield <u>1/</u> and <u>2/</u>	Cattle	74	100	---	5/15 to 6/15	Deferred Rotation	Springs/3 each Brush Control/160 acres
Fork <u>4/</u>	Cattle	---	7	---	6/1 to 7/30	Seasonal	None
Hot Springs <u>1/</u>	Cattle	112	67	45	5/16 to 10/30	Deferred Rotation	Fence/0.5 miles
McHan Creek <u>1/</u>	Cattle	63	63	---	6/16 to 9/30	Seasonal	Springs/2 each
Mill Canyon	Cattle	44	28	16	5/16 to 8/31	Seasonal	Fence/1.0 miles
Mountain View <u>1/</u>	Cattle	30	30	---	6/1 to 8/31	Seasonal	Reservoir/1 each Springs/1 each Fence/0.5 miles Brush Control/120 acres
Phillips Creek <u>1/</u>	Cattle	26	20	6	5/16 to 8/31	Seasonal	None
Piney	Cattle	84	43	41	6/1 to 7/18	Seasonal	Springs/1 each
Powell Creek <u>1/</u>	Cattle	36	17	19	5/16 to 8/31	Seasonal	None
Roanhide <u>1/</u>	Sheep	120	120	---	6/1 to 10/15	Rest Rotation	None
Rough Creek <u>1/</u>	Cattle	460	391	69	6/16 to 9/30	Deferred Rotation	Springs/2 each
Sheep Point <u>1/</u>	Cattle	90	71	19	5/16 to 6/15	Seasonal	Fence/0.5 miles Springs/1 each
Sheep Trail <u>1/</u>	Sheep	---	158 <u>5/</u>	---	---	---	---
Soldier <u>1/</u>	Sheep	80	80	---	9/1 to 9/20	Seasonal	None
Three Mile <u>1/</u>	Cattle	19	13	6	6/1 to 10/20	Seasonal	None
Willow Creek <u>1/</u>	Cattle	71	40	31	6/20 to 9/19	Seasonal	Reservoirs

1/ These allotments could be maintained as custodial use areas if the exchange and public sale proposals are to be implemented. If custodial management is maintained pending disposal, the improvements identified above will not be implemented.
2/ The Camas Allotment will be combined with the Fairfield Allotment.
3/ Covert to cattle use from sheep use.
4/ Previously unallotted.
5/ 158 AUMs available for trail use.

TABLE B
GRAZING MANAGEMENT FOR THE BIG WOOD ANALYSIS UNIT

Allotment	Kind of Livestock	Present Preference (AUMs)	New Preference		Grazing Season	Grazing System	Improvements Needed to Implement Grazing System
			Active (AUMs)	Suspended (AUMs)			
Big Beaver	Cattle Sheep	144 201	0 130	248 216	6/1 to 6/30 & 10/16 to 11/30	Deferred Rotation	Reservoir/1 each Spring/2 each
Brock Creek	Cattle	19	10 <u>1/</u>	0	5/15 to 9/30	Seasonal	Spring/1 each
Bullion Gulch	Sheep	274	256	185	5/15 to 11/10	Seasonal	Spring/1 each Brush Control/100 acres
Camp Creek	Cattle Sheep	0 452	332 <u>1/</u> 120	0 278	5/15 to 10/31	Deferred	None
Cherry Creek	Sheep	150	60	100	6/5 to 6/15	Seasonal	Fence/0.5 miles
Colorado Gulch	Sheep	27	27 <u>1/</u>	17	5/15 to 8/31	Seasonal	Spring/1 each
Courier	Cattle	58	58 <u>1/</u>	15	6/1 to 9/30	Rest Rotation	Pipeline/1 mile Brush Control/300 acres
Cove	Cattle	1302	528	1100	5/15 to 9/30	Rest Rotation	Spring/2 each Brush Control/350 acres
Croy Creek	Cattle Sheep Sheep Trail	267 1064 0	960 371 <u>1/</u> 25	0 812 0	5/15 to 11/10	Rest Rotation	Reservoir/2 each Spring/5 each Pipeline/0.2 miles Brush Control/1300 acres Brush Control/1000 acres Seeding/75 acres
Decker Gulch	Cattle	16	16 <u>1/</u>	0	5/15 to 8/30	Seasonal	Spring/1 each
Deer Creek (SV)	Cattle	299	299 <u>1/</u>	136	5/15 to 10/31	Deferred Rotation	Spring/1 each Fence/1.5 miles Brush Control/700 acres
Elkhorn	Sheep	332	332 <u>1/</u>	83	5/15 to 6/30 & 10/10 to 11/10	Seasonal	None
Hatty Creek	Sheep	31	31 <u>1/</u>	19	5/15 to 6/15	Deferred	None
Homestead	Cattle	10	10 <u>1/</u>	6	5/15 to 10/31	Seasonal	Brush Control/100 acres
Hyndman	Cattle	33	33 <u>1/</u>	8	5/15 to 9/30	Seasonal	Brush Control/350 acres
Indian Creek	Cattle Sheep	792 720	412 720 <u>1/</u>	425 334	5/15 to 10/15	Rest Rotation	Reservoir/2 each Spring/2 each Fence/2.3 miles Brush Control/350 acres Brush Control & Seeding/ 450 acres
Kent Canyon	Cattle Sheep	236 334	343 100	217 208	5/15 to 11/10	Deferred Rotation	Spring/1 each Brush Control/1625 acres
Little Beaver	Cattle Sheep	109 590	109 590	26 112	5/20 to 11/15	Seasonal	Spring/2 each
Little Rock Creek	Cattle	48	48 <u>1/</u>	28	5/20 to 9/30	Deferred Rotation	Fence/0.5 miles Brush Control/320 acres
Lower Rock Creek	Cattle Sheep Trail	709 0	495 45	548 0	5/20 to 9/15	Deferred Rotation	Reservoir/1 each Spring/4 each Fence/0.2 miles Brush Control & Seeding/ 500 acres Brush Control & Seeding/ 200 acres
Martin Canyon	Sheep	404	404	100	5/15 to 11/10	Seasonal	Fence/0.2 miles Brush Control/200 acres

TABLE B (Cont.)

GRAZING MANAGEMENT FOR THE BIG WOOD ANALYSIS UNIT

Allotment	Kind of Livestock	Present Preference (AUMs)	New Preference		Grazing Season	Grazing System	Improvements Needed to Implement Grazing System
			Active (AUMs)	Suspended (AUMs)			
McAtee	Cattle	36	0	0			
Muldoon Canyon	Cattle Sheep	420 1066	276 480	144 957	5/15 to 11/15	Deferred	Spring/3 each
Poison Creek	Cattle Sheep	766 133	497 92	735 122	5/15 to 9/30	Rest Rotation	Reservoir/5 each Spring/2 each Cattleguard/6 each Brush Control/500 acres
Poverty Flat	Cattle	7	0	0			None
Quigley	Sheep	739	739 <u>1/</u>	172	5/15 to 11/10	Seasonal	Spring/3 each
Red Elephant	Cattle Sheep	36 113	36 <u>1/</u> 113 <u>1/</u>	44 70	5/15 to 11/10	Seasonal	None
Rota Run	Sheep	23	23 <u>1/</u>	14	5/15 to 10/31	Seasonal	None
Scattered Tracts	Cattle	78	43	82	5/15 to 9/30	Deferred	None
Severe	Cattle	29	29 <u>1/</u>	0	5/16 to 7/31	Deferred	None
Shirley	Cattle	43	0	0			None
Slaughterhouse	Sheep	670	622	215	5/15 to 11/10	Seasonal	Brush Control/100 acres
South East Fork	Sheep	146	146 <u>1/</u>	37	5/15 to 11/10	Rest Rotation	Spring/1 each Fence/0.2 miles
Square Mountain	Cattle	29	29 <u>1/</u>	18	6/1 to 9/30	Deferred	None
Timber Gulch	Sheep	136	136 <u>1/</u>	84	5/15 to 11/10	Seasonal	None
Upper Rock Creek	Sheep	788	788 <u>1/</u>	472	5/15 to 11/10	Seasonal	Spring/2 each Wells/2 each (horizontal)
Upper Slaughterhouse	Sheep	217	207	65	5/15 to 11/10	Seasonal	Spring/1 each Brush Control/50 acres
Water Gulch	Sheep	223	128	150	5/15 to 11/10	Seasonal	Brush Control/150 acres
West Bellevue	Cattle Sheep	444 535	444 535 <u>1/</u>	273 328	5/15 to 11/10	Deferred Rotation	Spring/4 each Cattleguard/2 each
Wolftone	Sheep	9	9 <u>1/</u>	5	5/15 to 8/31	Seasonal	None

1/ Additional Use is available on a nonrenewable basis up to the inventoried capacity. This additional use will be monitored for at least 5 years prior to converting to active preference.

TABLE C

GRAZING MANAGEMENT FOR THE MULDOON ANALYSIS UNIT

Allotment	Kind of Livestock	Present Preference (AUMs)	New Preference		Grazing Season	Grazing System	Improvements Needed to Implement Grazing System
			Active (AUMs)	Suspended (AUMs)			
Baird	Cattle Sheep	135 <u>1/</u>	40 <u>2/</u> 95 <u>2/</u>	---	5/1 to 11/15	Deferred Rotation	None
Saptie	Sheep	128	128 <u>2/</u>	---	5/1 to 8/31	Seasonal	None
Barton	Cattle	100	56	44	5/1 to 9/30	Seasonal	Reservoir/1 each Spring/1 each Brush Control/90 acres Brush Control & Seeding/ 10 acres
Bennett	Cattle	62	62	---	7/1 to 7/31	Seasonal	None
Cottonwood	Sheep	288	288 <u>2/</u>	---	5/1 to 11/30	Seasonal	Spring/2 each
Crater	Sheep	396	396 <u>2/</u>	---	5/1 to 11/30	Seasonal	Spring/1 each
Dry Creek	Cattle	2649	1449	1764	5/1 to 9/15	Rest Rotation	Reservoir/2 each Spring/2 each Brush Control/3500 acres Brush Control/4000 acres Brush Control/2190 acres Brush Control & Seeding/ 150 acres
East Fork	Cattle Sheep	435 291	520 66	---	5/1 to 11/30 5/1 to 11/30	Deferred Rotation	Reservoir/1 each Spring/2 each Fence/0.8 miles Brush Control/300 acres Brush Control & Seeding/ 800 acres
Elk Mountain	Cattle	308	127	181	5/15 to 7/15 & 9/16 to 10/15	Deferred Rotation	Fence/1.5 miles Brush Control & Seeding/ 600 acres
Flat Top Sheep Co.	Cattle Sheep	1675 2665	3255 1000	---	5/1 to 11/30 5/1 to 11/30	Deferred Rotation Deferred Rotation	Reservoir/2 each Spring/7 each
H & S	Cattle	30	30 <u>2/</u>	---	7/1 to 9/30	Seasonal	Spring/1 each
Hailey Creek	Sheep	368	368 <u>2/</u>	---	5/1 to 11/30	Seasonal	None
Iron Mine	Sheep	923	923 <u>2/</u>	---	5/1 to 11/30	Seasonal	Spring/3 each
Lava Lake	Cattle	734	734 <u>2/</u>	---	5/1 to 11/30	Deferred Rotation	Spring/4 each Pipeline/1.3 miles Brush Control & Seeding/ 1265 acres
Little	Cattle	74	59	15	5/1 to 6/30	Seasonal	Brush Control/50 acres
Little Fish Creek	Cattle	195	162	33	6/1 to 10/31	Deferred Rotation	Spring/1 each Brush Control/100 acres
Little Wood	Sheep	538	401	137	5/1 to 6/15 & 9/1 to 11/30	Seasonal	None
McFarland	Cattle	84	84 <u>2/</u>	---	7/1 to 9/15	Seasonal	Spring/2 each

TABLE C (Cont..)

GRAZING MANAGEMENT FOR THE MULDOON ANALYSIS UNIT

Allotment	Kind of Livestock	Present Preference (AUMs)	New Preference		Grazing Season	Grazing System	Improvements Needed to Implement Grazing System
			Active (AUMs)	Suspended (AUMs)			
Muldoon	Cattle Sheep	1020 ^{1/} 88	400 708 ^{2/}	--- ---	5/1 to 11/15 5/1 to 11/15	Seasonal Seasonal	Spring/2 each
North 40	Sheep	40	36	4	5/1 to 11/30	Seasonal	Brush Control/30 acres
Queens Crown	Cattle	715	396	319	5/1 to 7/15	Deferred Rotation	Spring/2 each
Road Canyon	Cattle	543	379	164	5/1 to 7/31	Seasonal	Reservoir/3 each Spring/4 each Brush Control/440 acres Brush Control & Seeding/ 60 acres
Rocky Bar	Cattle Sheep	234 ---	120 2	--- 112	5/1 to 11/10 5/1 to 11/10	Seasonal Seasonal	None
Shale	Cattle	106	62	44	5/1 to 8/31	Seasonal	Spring/1 each Brush Control & Seeding/ 90 acres
Sheep Creek	Sheep	705	705 ^{2/}	---	5/1 to 11/30	Seasonal	Fence/1.5 miles
Silver Creek	Cattle	500	250	250	5/1 to 7/31	Deferred Rotation	Reservoir/2 each Spring/2 each Brush Control/130 acres Brush Control & Seeding/ 150 acres
Simpson	Sheep	32	22	10	5/1 to 11/10	Seasonal	Cattleguard/1 each
South 120	Sheep	40	28	12	5/1 to 11/30	Seasonal	None
Spring Creek	Cattle Sheep	88 ^{1/}	75 ^{2/} 13 ^{2/}	--- ---	5/1 to 7/31	Seasonal Seasonal	Fence/0.5 miles
Stocking	Cattle	90	180 ^{2/}	---	5/1 to 9/15	Seasonal	Spring/2 each
Telfer	Sheep	39	39	---	5/1 to 8/31	Seasonal	None
Timber Butte	Cattle	900	540	360	6/16 to 10/15	Deferred Rotation	Reservoir/2 each Spring/3 each Fence/3.5 miles Brush Control/325 acres Brush Control & Seeding/ 125 acres
Trail Creek	Sheep Cattle	285 321	285 321	--- ---	5/1 to 9/30 5/1 to 9/30	Seasonal Seasonal	Spring/1 each
Upper Fish Creek	Sheep	189	189 ^{2/}	---	5/1 to 8/31	Seasonal	None
West Fork Fish Creek	Cattle Sheep	273 ^{1/}	77 156	--- 40	5/1 to 8/31 5/1 to 8/31	Seasonal Seasonal	None
Woodbury	Cattle	125	84	41	5/15 to 7/31	Seasonal	Spring/1 each Brush Control/80 acres Brush Control & Seeding/ 20 acres

^{1/} Presently adjudicated for either sheep or cattle.

^{2/} Additional forage is available on a nonrenewable basis up to the inventoried capacity. This additional use will be monitored for at least 5 years prior to converting to active preference.

Shoshone District: Off-Road Vehicle Designation Decisions

Agency: Bureau of Land Management, Interior

Action: Notice of Off-Road Vehicle Designation Decisions

SUMMARY: The Shoshone District, Bureau of Land Management, has completed decisions to designate 245,000 acres of public land in Blaine, Camas, Butte, Custer, and Elmore counties, Idaho as open, limited, or closed to off-road vehicle use. Designations are a result of land use planning decisions made in the 1981 Sun Valley Management Framework Plan. During planning, public comment was minimal in regards to off-road vehicle (ORV) use.

The effect of the designations is to eliminate ORV use on some public lands to protect natural values or limit use subject to restrictions on seasons of use or routes of travel in areas of crucial wildlife habitat values, or important scenic, cultural, or recreation values. However, most public lands are open to all vehicle use. Thirteen areas will be affected, resulting in 9,712 acres closed to ORVs, 42,799 acres limited, and 192,489 acres open to ORVs. No private or state lands will be affected by these designations.

DATE: The subject planning decision modifications are effective October 1, 1982.

FOR FURTHER INFORMATION CONTACT: Dick Kodeski, Outdoor Recreation Planner, Monument Resource Area, P. O. Box 2B, Shoshone, Idaho 83352 (208)886-2206; Ervin Cowley, Area Manager, Monument Resource Area, P. O. Box 2B, Shoshone, Idaho 83352 (208)886-2206.

SUPPLEMENTARY INFORMATION: The authority for this decision is derived from Executive Orders 11644 and 11989 and regulations contained in 43 CFR 8340.

Specific area designations are as follows:

I. Open Designation

Vehicle travel is permitted in the area (both on and off roads) if the vehicle is operated responsibly in a manner not causing, or unlikely to cause significant, undue damage to, or disturbance of the soil, wildlife, wildlife habitat, improvements, cultural or vegetative resources or other authorized uses. Most of the public lands in the Sun Valley Planning Unit, 192,489 acres, have been designated as open to all forms of ORV use on a year long basis.

II. Limited Designations

Vehicle travel is limited by restrictions placed on seasons of use, types of vehicles allowed, travel areas or combinations of these restrictions as necessary to protect natural resources.

A. Seasonal restrictions - closed to all motor vehicle use December 1-April 30.

1. Big/Little Beaver area located approximately 15 miles west of Bellevue, Idaho (6,520 acres).
2. Elk Mountain area located approximately 18 miles north of Carey, Idaho (8,296 acres).
3. Martin Canyon area located approximately 5 miles east of Bellevue, Idaho (5,834 acres).
4. Triumph area located just north of Triumph, Idaho (2,461 acres).
5. Deer Creek area located approximately 5 miles northwest of Hailey, Idaho (230 acres).

6. Minnie Moore area located approximately 2 miles west of Bellevue, Idaho (3,599 acres).
 7. Queen's Crown area located approximately 5 miles west of Carey, Idaho (7,808 acres).
- B. Seasonal restrictions (closed to all motor vehicle use December 1-April 30) and motorized travel limited to designated roads the remainder of the year.
1. Jasper Flats area located approximately 3 miles east of Gannett, Idaho (695 acres).
- C. All motorized travel limited to designated roads.
1. North Ketchum area located approximately 3 miles north of Ketchum, Idaho (44 acres).
- D. Travel limited to designated roads except over snow vehicles.
1. Dry Creek Springs area located approximately 5 miles north of Picabo, Idaho (230 acres).
- E. Travel limited to authorized vehicles under permit.
1. Bald Mountain area located approximately 1 mile southwest of Ketchum, Idaho (1,440 acres).

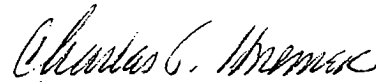
III. Closed Designation

Several areas have been closed to all motor vehicle use. These areas total 9,712 acres.

- A. Hemingway School Environmental Education Area located 1/4 mile west of Ketchum, Idaho (70 acres).
- B. Friedman area located approximately 22 miles east of Hailey, Idaho (9,535 acres).

C. North Ketchum area located approximately 3 miles north of Ketchum, Idaho (107 acres).

An environmental assessment describing the impact of these designations was completed and no significant environmental impacts were found. This document, as well as detailed maps of closed and limited areas are available for inspection at the office listed above.



Charles J. Haszier
District Manager