

## Visual Resources Management (VRM)

### Decision Number 1

Manage all areas along travel influence zones in a visual resource class III (see MFP 3 Overlay). Care will be taken to minimize visual impacts to the extent practical.

#### Rationale

These areas have moderate scenic quality, but have a number of existing man-made influences such as roads, power lines, and fences. Care will be given to minimize visual intrusions to the extent practical. This can include the location, shape, height, etc. of various improvements. Scenic Highway 75 courses north and south through the unit.

### Decision Number 2

The remainder of the unit will be managed as a visual resource class IV. Care will be taken to reduce the adverse impacts to the extent practical.

#### Rationale

These areas have moderate to low scenic qualities. Although substantial detracton from the scenic quality is allowed, all work will be designed to reduce the adverse impacts.

## Off-Road Vehicles (ORVs)

### Decision Number 1

Designate the crucial elk and deer winter ranges shown on MFP 3 Overlay as "limited" for ORVs, to normally allow ORV use only from May 1 to November 30. Designate all other public lands as "open areas and trails," subject to adjustments for special needs identified in the future. Closures of small areas to eliminate resource damage may be implemented either by permanent or temporary designations. Permits may be issued for ORV events in winter ranges, provided the animals will not be stressed by the machines in the event.

Rationale

The areas designated as crucial wildlife winter ranges are essential to the survival of healthy herds. Disturbance during the winter months causes undue stress on the animals at this critical time of the year. Although there is some erosion hazard, there are very few ORV problems evident. Most of the use is over snow or on roads and trails. This may cause some problems for adjoining private landowners in the future; few problems exist at the present time.

Decision Number 2

Continue to recognize present uses of the Wood River Recreation Area<sup>A</sup> by one of three methods: (1) Maintain the existing R&PP lease, (2) Encourage Blaine County to accept responsibility for the area, or (3) Return the area to BLM jurisdiction and manage it for the current recreational purposes.

*Special Recreation  
Management  
Area 1-22-8  
20*

Rationale

This area provides for intensive ORV use and reduces pressure on other areas within the unit. This provides an area for many types of ORV events, reducing the need on adjoining public lands.

Recreation

Decision Number 1

Provide for all types of winter sports, including plowed access routes and parking, designated routes or trails, and restrictions. Develop proper guidelines for the particular type of sport, whether cross-country skiing or snowmobiling.

Rationale

The area provides potential for many types of winter sports. The greatest present demand is for snowmobile use. This use is causing minimal environmental problems.

## Fire Management

### Decision Number 1

Wildfires starting between June 1 and September 30 will be suppressed as quickly as possible. Modified suppression may be used during the rest of the year, based on the following considerations:

- a. Potential beneficial and adverse effects of the burn.
- b. Potential size of the fire.
- c. Cost of suppression.
- d. Existence of an adequate prescription.
- e. Monitoring of the fire from the initial report until it is out.
- f. Fuel type in which the fire is burning. Timber fires will be suppressed.

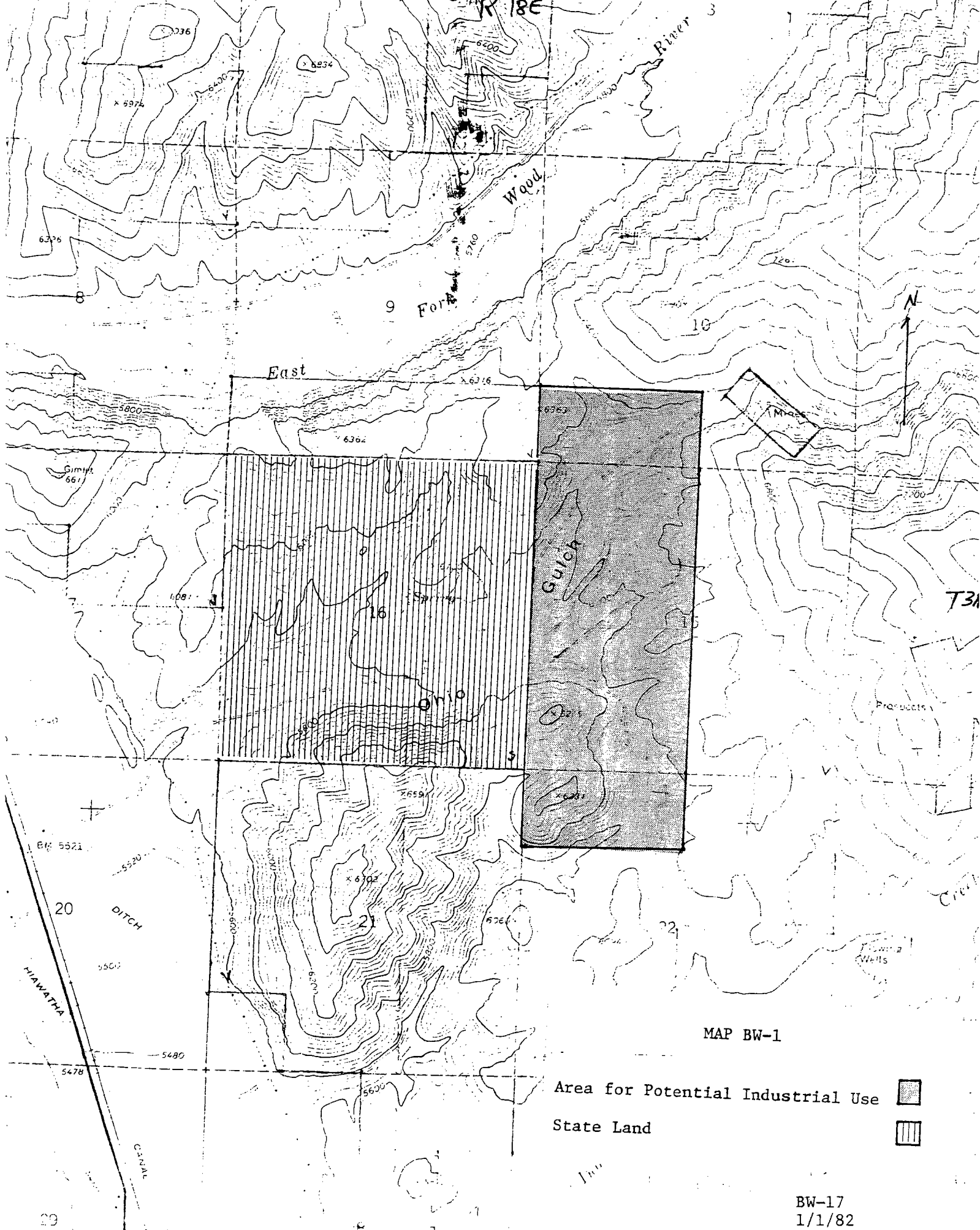
### Rationale

Fall and spring burning can be very beneficial to certain values on public land, including forage production and diversity, wildlife habitat, watershed condition, etc. Generally, ridge tops become effective fire lines, preventing fires from getting larger. Cool nights help suppress fires in sagebrush communities.


TABLE BW-1

DEER AND ELK SEASONAL USE  
BY GRAZING ALLOTMENT  
ON PUBLIC LANDS IN THE BIG WOOD ANALYSIS UNIT

ALLOTMENT	DEER MONTHS SUMMER	DEER MONTHS MIGRATION	DEER MONTHS WINTER	ELK MONTHS SUMMER	ELK MONTHS WINTER
	May 1-Oct 30	Apr 16-Apr 30 Nov 1- Nov 14	Nov 15-Apr 15	May 1-Oct 30	Nov 15-Apr 15
Big Beaver	232	28	20		204
Brock Creek	15	6			
Bullion Gulch	136	56	51		
Camp Creek	266	112			
Cherry Creek	133	16	30	20	153
Colorado Gulch	77				
Courier	13				25
Cove	140		325		
Croy Creek	795	325	36		
Deer Creek (SV)	336		295		
Elkhorn	63				28
Hatty Creek	21	8			
Homestead	10	4			
Hyndman	8				31
Indian Creek	204		627		148
Kent Canyon	248	43			
Little Beaver	564	66		44	632
Little Rock Creek	60	25			
Lower Rock Creek	372	152	126		
Martin Canyon	171		300		430
McAtee	1				
Muldoon Canyon	152		1071		430
Poison Creek	463	204	195		30
Poverty Flat	11				
Quigley	134		341		135
Red Elephant	156	63			41
Rota Run	64		60		
Scattered Tracts	30	12			
Severe	24	3			
Shirley	10	4	37		15
Slaughterhouse	76		150		30
South East Fork	42				
Square Mountain	22				5
Timber Gulch	261		80		6
Upper Rock Creek	358				
Upper Slaughterhouse	22				
Water Gulch	16				
West Bellevue	516	211	613		
Wolfstone	31	12			
Totals	6253	1350	4357	64	2343



MAP BW-1

Area for Potential Industrial Use   
State Land 