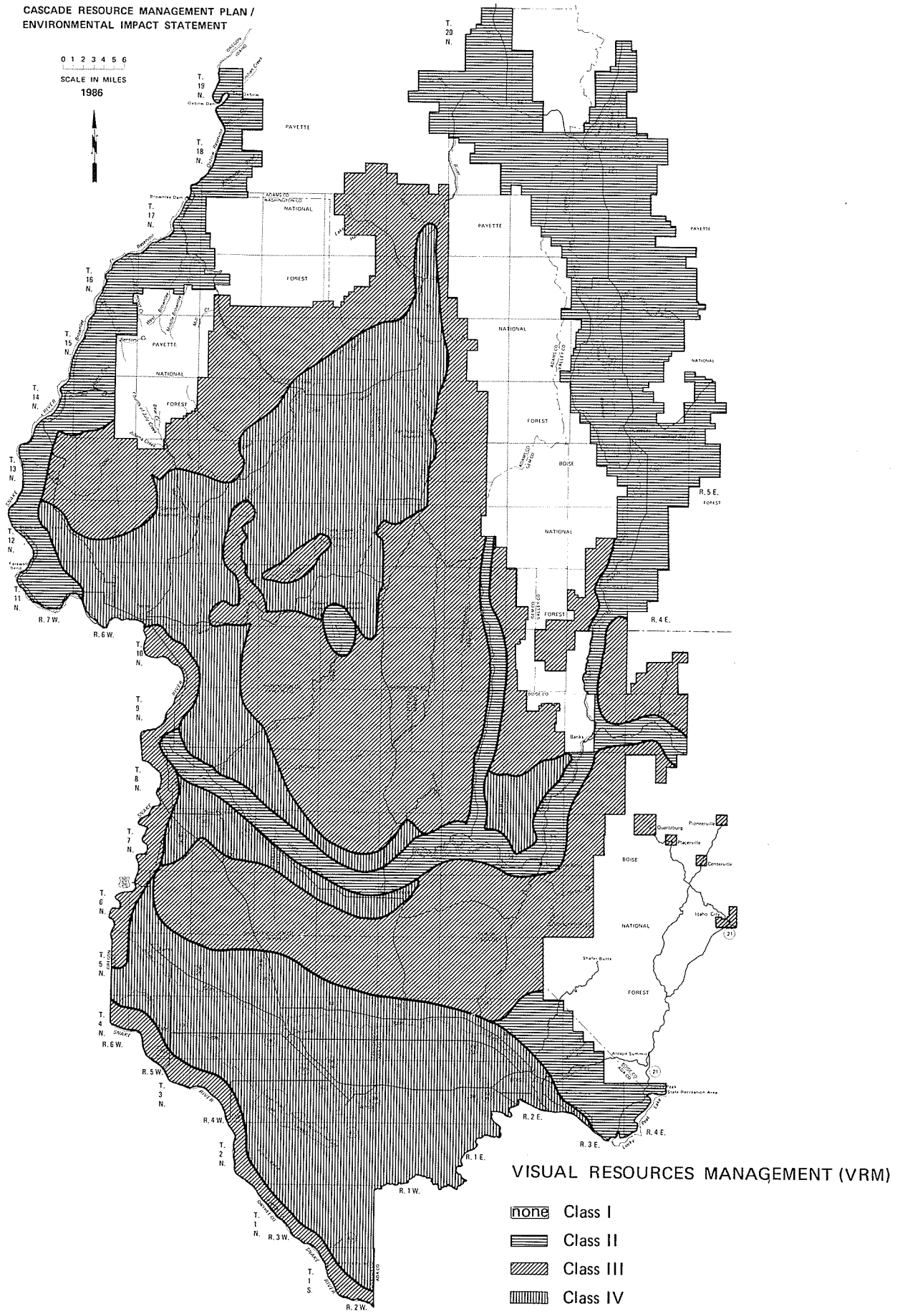


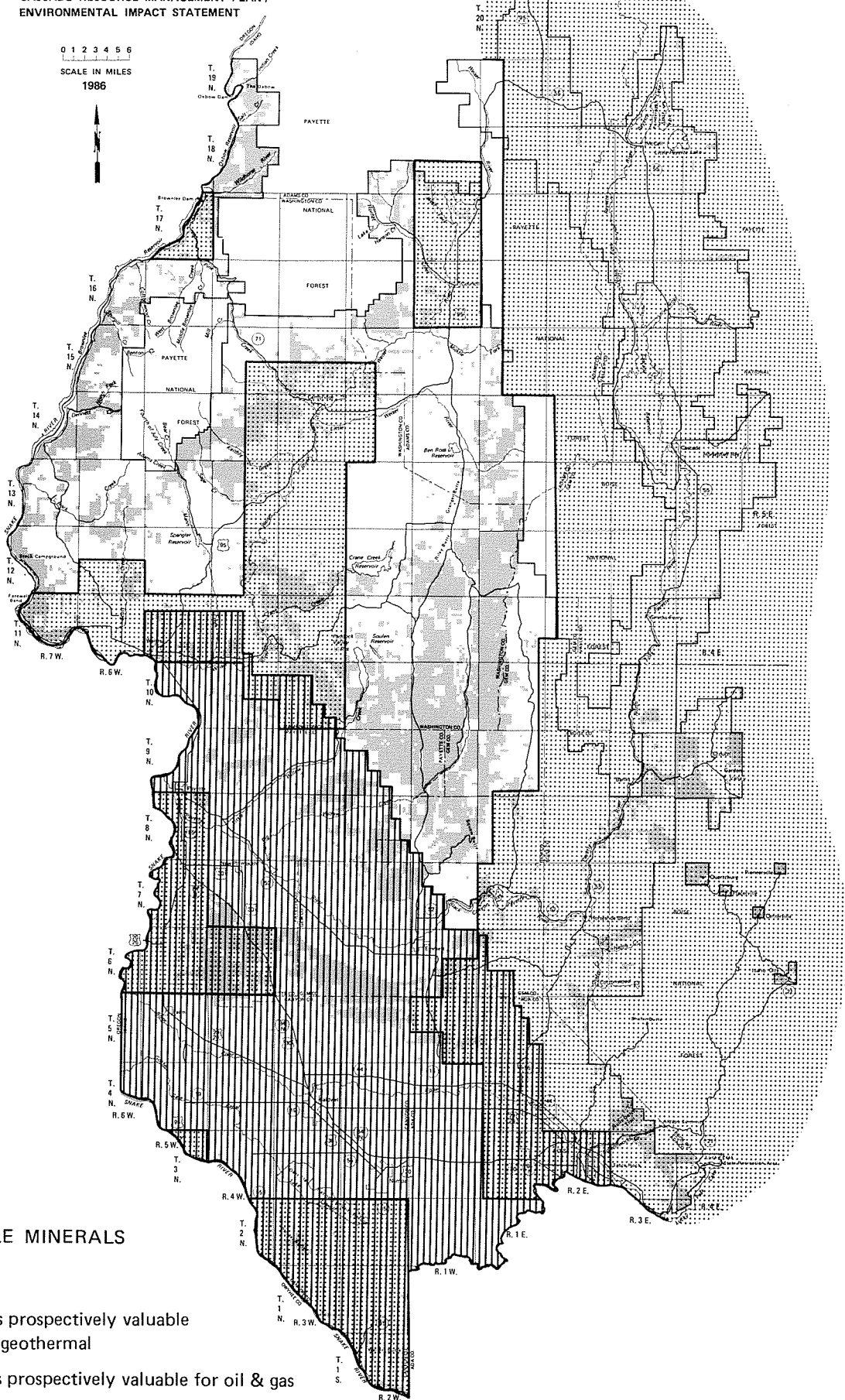
# MAP 3-8

CASCADE RESOURCE MANAGEMENT PLAN / ENVIRONMENTAL IMPACT STATEMENT


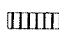


CASCADE RESOURCE MANAGEMENT PLAN / ENVIRONMENTAL IMPACT STATEMENT

0 1 2 3 4 5 6  
SCALE IN MILES  
1986



LEASEABLE MINERALS

-  Lands prospectively valuable for geothermal
-  Lands prospectively valuable for oil & gas