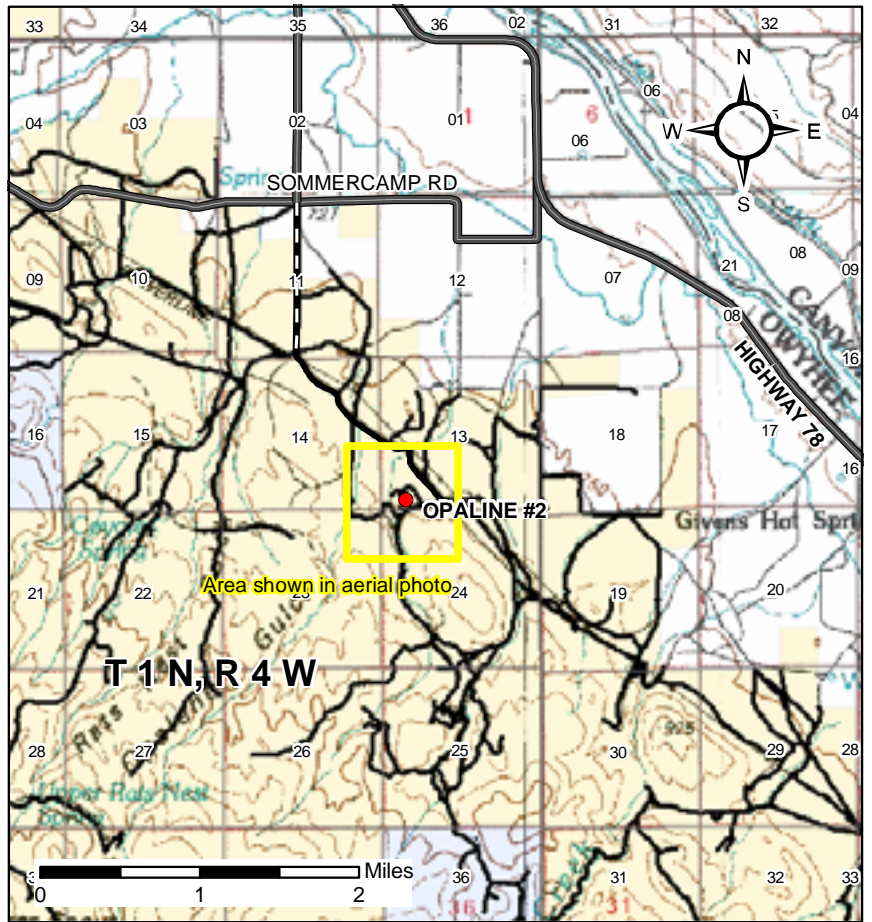
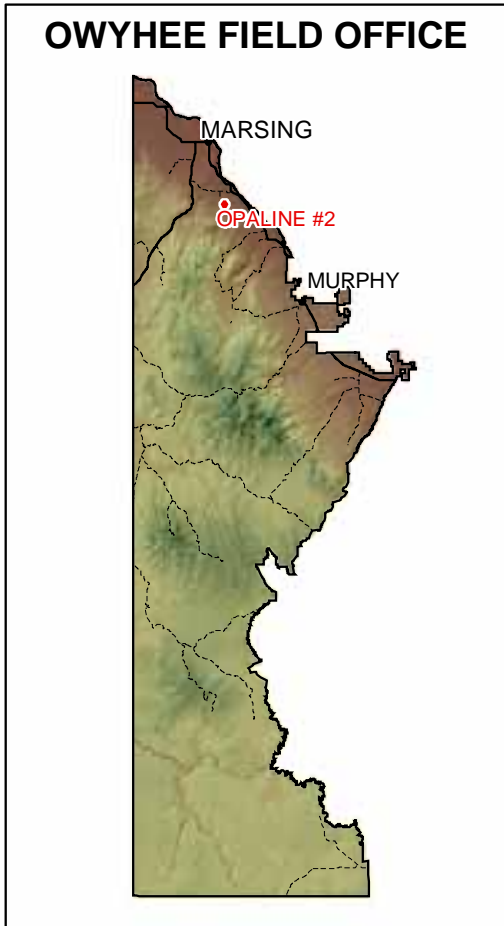
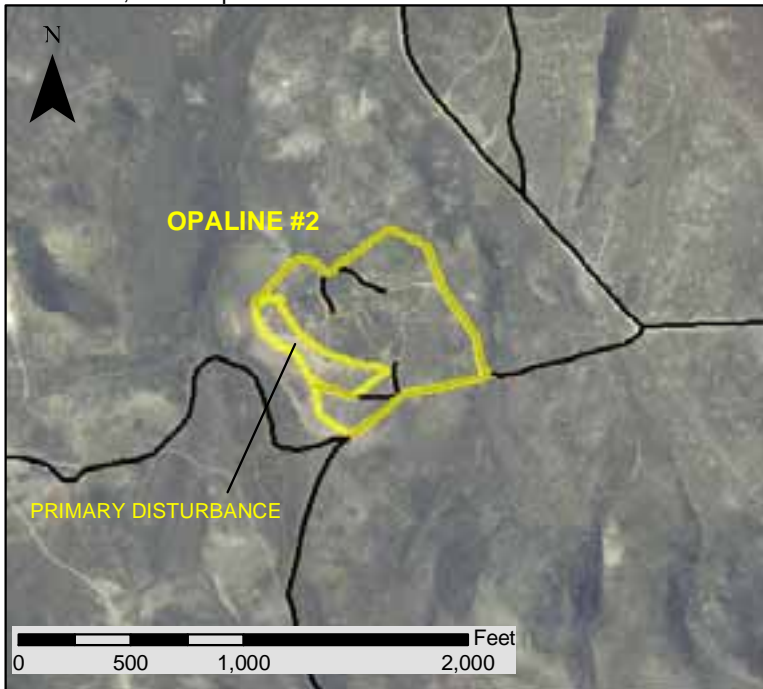


Opaline #2 Community Pit

IDI-28872



Opaline #2 Community Pit is located south of Sommercamp Rd; T 1 N , R 4 W, Section 13, S 1/2, SW 1/4, SW 1/4. It is located within the Tertiary Poison Creek Formation, which has buff to white colored arkosic sandstone. The site provides a good source of decorative sandstone rock. The area of disturbance is approximately 12.2 acres, and the permit is for 20 acres.



No warranty is made by the Bureau of Land Management for use of the data for purposes not intended by BLM.



Created 8/10/2005