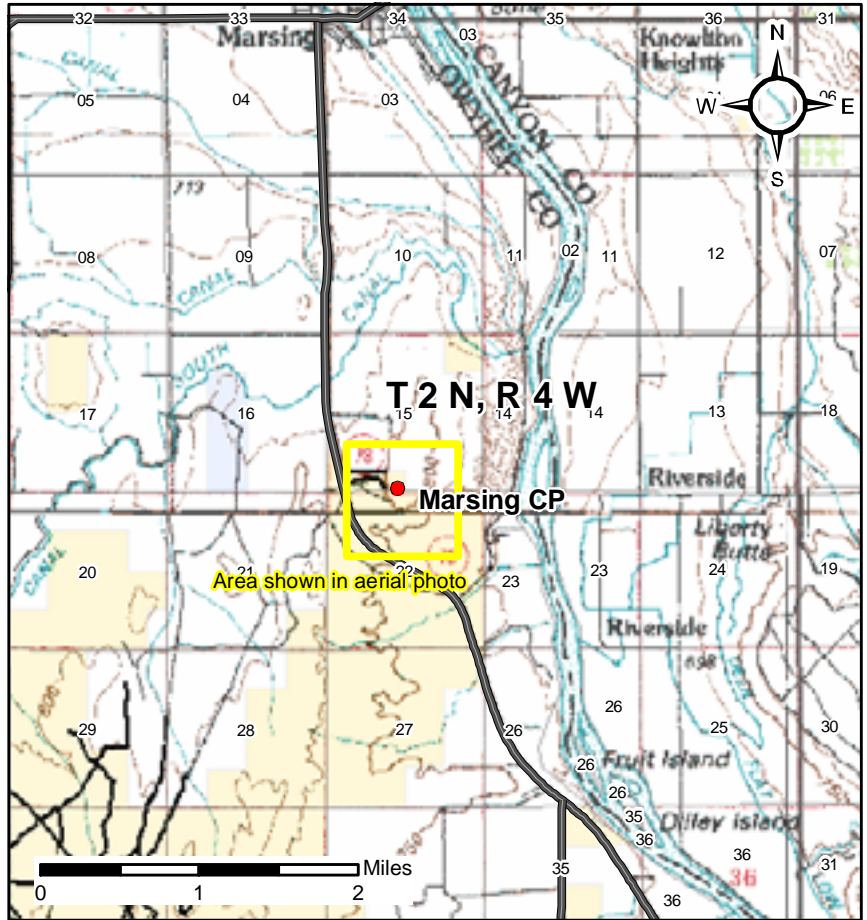
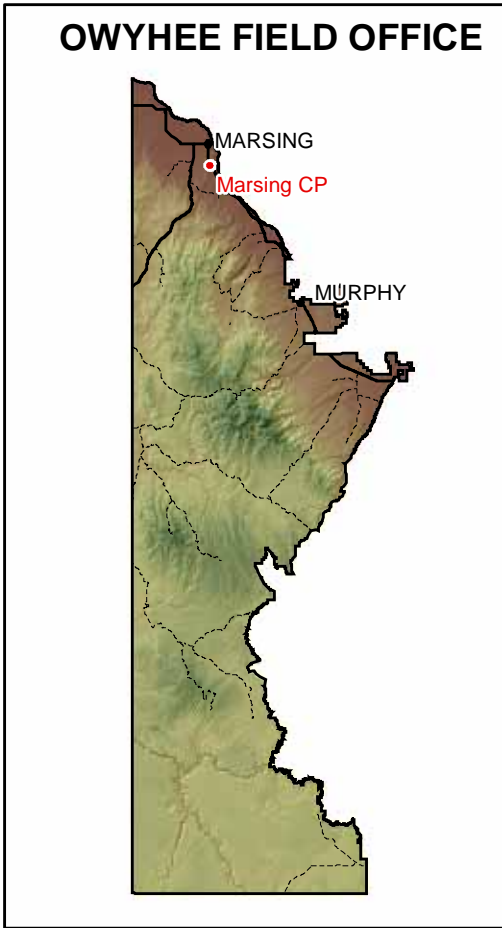
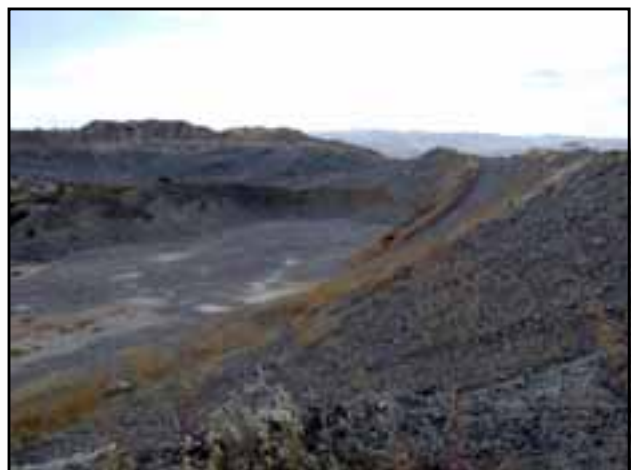
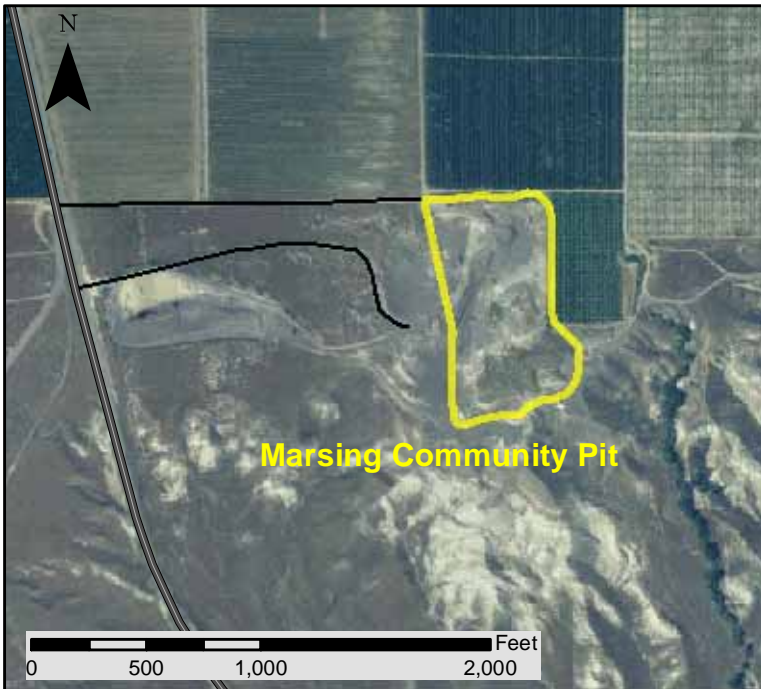


Marsing Community Pit IDI-22446



Marsing Community Pit is located 3 miles south of the town of Marsing east of Highway 78; T 2 N , R 4 W, Section 15 and 22, E1/2, NE1/4, NE1/4, NW 1/4. The site is located within Quaternary gravels. The area of disturbance is approximately 10.9 acres. This location is a source of sand and gravel.



No warranty is made by the Bureau of Land Management for use of the data for purposes not intended by BLM.



Created
9/6/2005