

Districts and schools

Number of districts (CCD)	1993-94	2003-04
	67	67

Number of public schools (CCD)		
Elementary	1,479	1,862
Middle	393	517
High	343	448
Combined	300	584
Other	41	16
Total	2,556	3,427

Number of charter schools (CCD)	257
---------------------------------	-----

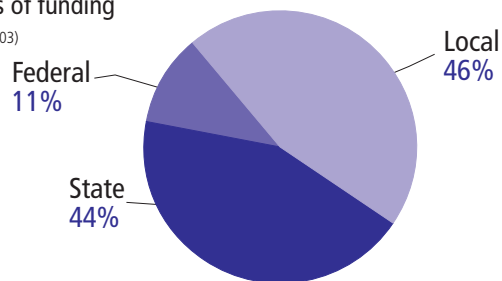
Finances

Total current expenditures (CCD, in thousands of dollars, adjusted for inflation to 2002-03)	1993-94	2002-03
Instructional	\$7,607,936	\$9,616,720
Noninstructional	643,212	800,171
Support	4,913,753	5,938,232
Total	13,164,901	16,355,123

Per-pupil expenditures (CCD, adjusted for inflation to 2002-03)	\$6,451	\$6,439
---	---------	---------

Sources of funding

(CCD, 2002-03)



Title I allocation 2002-03 (ED; Includes Title I, Part A) \$523,834,879

KEY:	* = Less than 0.5 percent
—	= Not applicable
n/a	= Not available
#	= Sample size too small to calculate
FTE	= Full Time Equivalent

Students

Public school enrollment (CCD)	1993-94	2003-04
Pre-K	33,394	49,587
K-8	1,479,808	1,782,768
9-12	524,482	755,199
Total (K-12)	2,004,290	2,537,967

Race/ethnicity (CCD)		
American Indian/Alaskan Native	*	*
Asian/Pacific Islander	2%	2%
Black, non-Hispanic	25	24
Hispanic	14	22
White, non-Hispanic	60	51

Students with disabilities (OSEP)	12%	13%
-----------------------------------	-----	-----

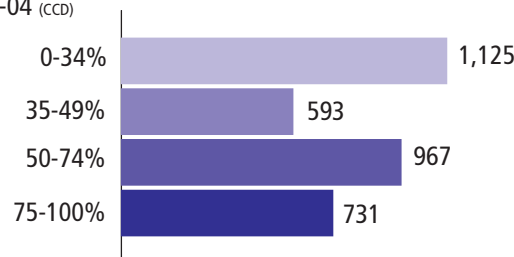
Students with limited English proficiency (NCELA)	6%	12%
---	----	-----

Migrant students (OME)	2%	3%
------------------------	----	----

Eighth-grade students enrolled in Algebra I for high school credit (NAEP)	1996	2003
	27%	28%

Students eligible to participate in the Free or Reduced-Price Lunch Program, 2003-04 (CCD) 1,189,681

Number of schools, by percent of students eligible to participate in the Free or Reduced-Price Lunch Program, 2003-04[†] (CCD)



[†]11 schools did not report.

Staff

Number of FTE teachers (CCD)	1993-94	2003-04
Elementary	55,876	72,593
Middle	19,380	27,794
High	22,498	35,355
Combined	9,632	9,074
Other	928	230
Total	108,314	145,046

Number of FTE non-teacher staff (CCD)		
Instructional aides	22,238	29,616
Instructional coordinators	801	696
Administrators	7,436	8,765
Other	85,783	111,743
Total	116,258	150,820

Percentage of teachers with a major in the main subject taught, grades 7-12 (SASS)	1994	2000
English	83%	86%
Mathematics	76	67
Science	52	69
Social studies	86	96

Percentage of core courses taught by highly qualified teachers, 2003-04 (As defined and reported by states, collected by ED)



Outcomes

	1993-94	2000-01
High school dropout rate (NCES)	n/a	4%
Avg. freshman graduation rate (NCES)	66%	61
College-going rate (IPEDS/NCES)	49	58

NAEP state results (NCES)		
Reading, Grade 4	1994	2005
Proficient level or above	23%	30%
Basic level or above	50	65
Math, Grade 8	1996	2005
Proficient level or above	17%	26%
Basic level or above	54	65

Statewide Accountability Information

See Appendix B for Florida's definitions of proficient for reading and mathematics for grades 4, 8, and 10.

See <http://info.doe.state.fl.us/fsir> for more details on the statewide accountability system.

State assessment for NCLB accountability: Florida Comprehensive Assessment Test

State student achievement levels: Level 1, Level 2, Level 3, Level 4, Level 5

NCLB Accountability Goals

2001-02 Annual measurable objective starting point			Target (2003-04)
Grade 4	Reading	31%	31%
	Mathematics	38	38
Grade 8	Reading	31	31
	Mathematics	38	38
Grade 10	Reading	31	31
	Mathematics	38	38

2003-04 NCLB accountability results, applied to 2004-05 school year

AYP outcomes and consequences*	Title I schools	All schools	All districts
Made AYP	251 (18%)	719 (21%)	5 (7%)
Identified for improvement:			
Year 1	929 (67%)	929 (27%)	0
Year 2	36 (3%)	36 (1%)	0
Corrective action	0	0	0
Restructuring	0	0	0
Exited Improvement status (made AYP twice after being identified for improvement)	n/a	n/a	n/a

Other indicator, 2003-04	State target	State outcome
Elementary indicator: FCAT writing assessment	90% or 1% improvement	Met
Middle school indicator: FCAT writing assessment	90% or 1% improvement	Met
High school indicator: FCAT writing assessment	90% or 1% improvement	Met
High school indicator: Graduation rate	85% or 1% improvement	Met

NCLB choice participation	Number of Title I students	Percent of eligible students
Title I school choice:	n/a	n/a
Supplemental educational services:	n/a	n/a

*Some AYP outcomes for this state are not available due to issues with data collection, measurement, or other reasons. For more information please visit the state's Web site, above.

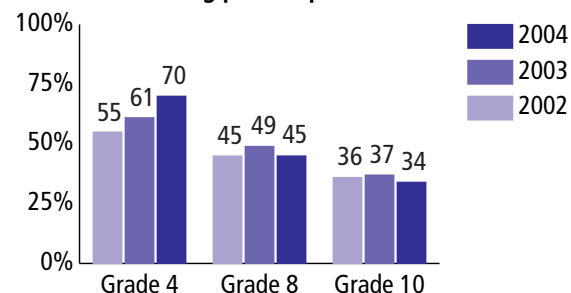
Student Achievement 2003-04

Florida Comprehensive Assessment Test, used for NCLB accountability

Reading

Proficient level or above for:	Grade 4	Grade 8	Grade 10
All students	70%	45%	34%
Economically disadvantaged students	59	29	19
Migrant students	45	17	8
Students with disabilities	43	17	15
Students with limited English proficiency	50	15	8
Black, non-Hispanic	53	26	16
Hispanic students	64	36	24
White, non-Hispanic	79	57	44

Student achievement trend: Reading percent proficient level or above



Mathematics

Proficient level or above for:	Grade 4	Grade 8	Grade 10
All students	64%	57%	62%
Economically disadvantaged students	52	41	45
Migrant students	44	33	40
Students with disabilities	39	21	28
Students with limited English proficiency	48	33	38
Black, non-Hispanic	44	34	37
Hispanic students	60	50	55
White, non-Hispanic	74	69	75

Student achievement trend: Mathematics percent proficient level or above

