

APPENDIX M

GRAZING MANAGEMENT

This Appendix shows the allotments within the Judith, Valley and Phillips Resource Areas. The following table explains the abbreviations used for the appendix.

Allot Number = Allotment Number
 Lvst Kind = Livestock Kind: C = Cattle, H = Horse, S = Sheep
 Mgt Cat = Management Category: M = Maintain, I = Improve, C = Custodial
 Graz Alloc = Grazing Allocation: Y = Yes, N = No
 Plan Type = E = Existing AMP, P = Proposed AMP, PT = Potential AMP, N = Non-AMP
 Graz Method = Grazing Method: RR = Rest Rotation, DR = Deferred Rotation, D = Deferred, S = Seasonal
 Exel = Excellent
 Unsuit = Unsuuitable
 Trend = U = Upward, D = Downward, S = Static

415

Allot Number	Allotment Name	Lvst Kind	Mgt Cat	Graz. Alloc	Plan Type	Grazing Season		Graz. Method	JUDITH RESOURCE AREA				Ecological Status/Condition					Trend
						From	To		Public AUMs	Other AUMs	Public Acres	Other Acres	Excel.	Good	Fair	Poor	Unsuit	
20016	WOLF CREEK COMMON	C	H	Y	P	0501	1031	S	1259	0	6560	0	0	15188	1340	0	0	S
02000	FINK EX-OF-USE IND.	C	M	Y	PT	0601	0715	S	0	43	320	0	320	0	0	0	0	S
02001	EAST INDIAN BUTTE CO	C	I	Y	P	0416	1115	S	3669	0	24300	0	2430	21870	0	0	0	S
02041	GEORGE KORMAREK IND.	C	C	Y	N	0301	0228	S	515	0	2931	0	0	2931	0	0	0	S
02003	CIMRHAKL IND.	C	C	Y	N	0301	0228	S	270	0	1642	0	0	1642	0	0	0	S
02004	GILSKEY IND.	C	M	Y	E	0516	1031	DR	309	0	1561	0	0	1290	271	0	0	S
02005	FERGUS TRIANGLE IND.	C	M	Y	E	0516	0915	DR	378	0	2130	0	0	820	1310	0	0	S
02006	ANTELOPE COULEE COMM	C	M	Y	P	0501	1130	S	551	0	3203	0	0	975	2228	0	0	S
02007	ARMELLS IND.	C	M	Y	P	0501	1015	S	568	0	3091	0	0	0	3091	0	0	S
02008	RINDAL/INDIAN BUTTE	C	C	Y	N	0301	0228	S	15	0	78	0	0	78	0	0	0	S
02010	JACKSON IND.	C	C	Y	N	0401	1130	S	56	0	160	0	0	160	0	0	0	S
02011	MACHLER IND.	C	C	Y	N	0401	1130	S	10	0	40	0	0	40	0	0	0	S
02012	JORDON INDIVIDUAL	C	C	Y	N	0301	0228	S	395	0	2021	0	0	2021	0	0	0	S
02013	WEST INDIAN BUTTE CO	C	I	Y	P	0416	1115	S	1575	0	11490	0	0	10341	1149	0	0	S
02015	J. KOMAREK IND.	C	C	Y	N	0301	0228	S	19	0	125	0	0	125	0	0	0	S
02016	D. KOMAREK HOME IND.	C	C	Y	PT	0301	0228	S	102	0	519	0	0	519	0	0	0	S
02017	MATHISON IND.	C	C	Y	N	0301	0228	S	60	0	335	0	0	335	0	0	0	S
02018	MAYBERRY IND.	C	M	Y	P	0301	0228	S	393	0	2933	0	0	2933	0	0	0	S
02019	SIROKY IND.	C	C	Y	N	0401	1130	S	71	0	360	0	0	360	0	0	0	S
02020	D&G RINDAL COMMON	C	C	Y	N	0601	0915	S	285	0	1373	0	0	1373	0	0	0	S
02021	LOWER ARMELLS	C	M	Y	P	1115	0415	S	260	0	2631	0	0	2631	0	0	0	S
02024	BOURGEOIS IND.	C	M	Y	P	0501	1031	S	567	0	3881	0	0	3881	0	0	0	U
02025	DRY ARMELLS PETRANEK	C	M	Y	P	0615	0115	S	720	0	4379	0	0	4379	0	0	0	S
02028	HANSON FLAT/MAULAND	C	C	Y	N	0501	1015	S	186	0	1175	0	0	1175	0	0	0	S
02031	WILLIS PLACE IND.	C	M	Y	N	0515	0715	S	383	0	1823	0	0	1823	0	0	0	S
02032	SATTERFIELD IND.	C	C	Y	N	0516	0931	S	477	0	1200	0	0	1200	0	0	0	S
02033	TAYLOR IND.	C	C	Y	N	0301	0228	S	5	0	40	0	0	40	0	0	0	S
02034	WILLMORE IND.	C	C	Y	N	0301	0228	S	202	0	200	0	0	200	0	0	0	S
02500	LUND & RANCH IND.	C	M	Y	P	0501	1031	S	653	0	1846	0	0	646	1200	0	0	S
02503	BUSENBARK IND.	C	M	Y	E	0510	1031	DR	432	0	2883	0	0	2883	0	0	0	S

Allot Number	Allotment Name	Lvst Kind	Mgt Cat	Graz. Alloc	Plan Type	Grazing Season		Graz. Method	Public AUMs	Other AUMs	Public Acres	Other Acres	Ecological Status/Condition					Trend
						From	To						Excel.	Good	Fair	Poor	Unsuit	
02505	HAY COULEE	C	M	Y	E	0516	1015	DR	817	0	3654	0	0	3216	438	0	0	S
02506	NORTH CROOKED IND.	C	M	Y	P	0501	1031	S	1865	0	7198	0	0	7198	0	0	0	S
02510	ANTELOPE STYER/SPIRO	C	M	Y	E	0515	1031	S	539	0	2126	0	0	680	1446	0	0	S
02511	WEAVER IND.	C	C	Y	N	0301	0228	S	159	0	575	0	0	575	0	0	0	S
02512	SLUGGETT IND.	C	C	Y	N	0301	0228	S	211	0	875	0	0	875	0	0	0	S
02514	PITMAN IND.	C	C	Y	N	0301	0228	S	238	0	960	0	0	960	0	0	0	S
02516	STYER IND.	C	C	Y	N	0301	0228	S	56	0	200	0	0	200	0	0	0	S
02517	WOODCOCK COULEE	C	C	Y	N	0501	1030	S	112	0	918	0	0	918	0	0	0	S
02599	BUTTON BUTTE IND.	C	M	Y	P	0501	1031	S	330	0	1670	0	1670	0	0	0	0	S
05099	OLSEN/HAGADON IND.	C	M	Y	E	0601	0930	DR	284	0	2188	0	0	2188	0	0	0	S
10004	H. ARTHUR INDIVIDUAL	C	C	Y	N	0301	0228	S	62	0	240	0	0	240	0	0	0	S
10009	WHISKEY RIDGE	C	M	Y	E	0515	0915	DR	407	0	2734	0	0	1500	1234	0	0	S
10027	JUDITH RIVER IND.	C	C	Y	N	0915	1130	DR	279	0	2226	0	0	2226	0	0	0	S
10036	NORTH MOCCASIN IND.	C	C	Y	P	0701	0831	S	72	0	641	0	0	641	0	0	0	S
10038	E. BUTCHER IND.	C	C	Y	N	0601	1130	S	12	0	120	0	0	120	0	0	0	S
10041	HEGGEN INDIVIDUAL	C	C	Y	N	0501	1201	S	169	0	2760	0	0	2760	0	0	0	S
10042	JUDITH MNT. COMMON	C	C	Y	N	0601	1031	S	55	0	896	0	0	896	0	0	0	S
10043	SNYDER INDIVIDUAL	C	C	Y	N	0301	0228	S	9	0	40	0	0	40	0	0	0	S
10053	LIPKE IND.	C	C	Y	N	0301	0228	S	54	0	480	0	0	480	0	0	0	S
10058	SPEAR T. IND/COMMON	C	C	Y	N	0620	0930	S	48	0	698	0	0	698	0	0	0	S
10060	MILBURN IND.	C	C	Y	N	0401	1130	S	44	0	549	0	0	549	0	0	0	S
10062	NELSON BROS. IND.	C	C	Y	N	0701	1030	S	8	0	40	0	0	40	0	0	0	S
10073	WISKEY GULCH IND.	C	M	Y	P	0616	1015	S	103	0	2461	0	0	1394	785	282	0	S
10085	MEES CABIN TRAIL IND	C	M	Y	E	0520	0815	DR	288	0	1339	0	80	1259	0	0	0	U
10086	UDELHOVEN IND.	C	C	Y	N	0401	1130	S	14	0	80	0	0	80	0	0	0	S
10092	WICKENS IND.	C	C	Y	N	0301	0228	S	5	0	33	0	0	33	0	0	0	S
10096	CARMICHAEL IND.	C	C	Y	N	0301	0228	S	66	0	289	0	0	289	0	0	0	S
15096	KNOX RIDGE RD.IND.	C	I	Y	P	0515	1215	S	1619	0	11270	0	0	2735	8535	0	0	D
15097	SMITH IND.	C	C	Y	N	0301	0228	S	249	0	960	0	0	960	0	0	0	S
15101	ANTELOPE IND.	C	M	Y	P	0501	1031	S	1086	0	4378	0	0	3502	876	0	0	S
15122	P/N INDIVIDUAL	C	M	Y	E	0501	1031	DR	1862	0	13917	0	0	13917	0	0	0	S
15128	WEST CROOKED CK.	C	M	Y	E	0516	1031	DR	502	0	2159	0	0	1975	184	0	0	S
20001	ALDRICH INDIVIDUAL	C	C	Y	N	0301	0228	S	12	0	40	0	0	40	0	0	0	S
20002	ALLEN INDIVIDUAL	C	C	Y	N	0301	0228	S	12	0	60	0	0	60	0	0	0	S
20005	MORGAN IND.	C	C	Y	N	0301	0228	S	65	0	420	0	0	420	0	0	0	S
20007	BENES INDIVIDUAL	C	C	Y	N	0301	0228	S	12	0	40	0	0	40	0	0	0	S
20008	W. BENES INDIVIDUAL	C	C	Y	N	0415	1130	S	88	0	320	0	0	320	0	0	0	S
20010	BLIND CANYON	C	M	Y	E	0301	1031	DR	382	0	4057	0	1058	100	2899	0	0	S
20011	BERGUM INDIVIDUAL	C	M	Y	N	0601	0915	S	51	0	170	0	0	170	0	0	0	S
20012	WALLING INDIVIDUAL	C	C	Y	N	0301	0228	S	10	0	40	0	0	40	0	0	0	S
20013	SMITH/BOLSTAD COMMON	C	C	Y	N	0516	0915	S	81	0	720	0	0	720	0	0	0	S
20013	ECONOM EX-OF-USE	C	C	Y	N	0616	0815	S	0	0	0	0	0	0	0	0	0	S
20014	BROWN COULEE	C	M	Y	P	0501	1031	S	455	0	6439	0	0	5239	1200	0	0	S
20017	HOLLIDAY INDIVIDUAL	C	C	Y	N	0515	1031	S	132	0	760	0	0	760	0	0	0	S
20018	TUSS INDIVIDUAL	C	C	Y	N	0301	0228	S	96	0	320	0	0	320	0	0	0	S
20019	BUTCHER INDIVIDUAL	C	M	Y	P	0301	0228	S	384	0	2900	0	0	2790	110	0	0	S
20002	HARRISON IND.	C	C	Y	N	0501	1015	S	0	94	0	564	0	0	0	0	0	S
20022	CARR INDIVIDUAL	C	C	Y	N	0301	0228	S	12	0	160	0	0	160	0	0	0	S
20024	CARTER INDIVIDUAL	C	C	Y	N	0301	0228	S	14	0	80	0	0	80	0	0	0	S

Allot Number	Allotment Name	Lvst Kind	Mgt Cat	Graz. Alloc	Plan Type	Grazing Season		Graz. Method	Public AUMs	Other AUMs	Public Acres	Other Acres	Ecological Status/Condition					Trend	
						From	To						Excel.	Good	Fair	Poor	Unsuit		
20026	DEMARS	C	M	Y	E	0601	1115	DR	4645	0	362	0	0	4645	0	0	0	0	S
20028	DOMISTHROPE INDIVIDU	C	C	Y	N	0401	1130	S	195	0	560	0	0	560	0	0	0	0	S
20029	EAGLE INDIVIDUAL	C	C	Y	N	0301	0228	S	44	0	200	0	0	200	0	0	0	0	S
20030	LEONARD INDIVIDUAL	C	M	Y	E	0616	0903	DR	146	0	820	0	0	820	0	0	0	0	S
20031	WOODHAWK INDIVIDUAL	C	I	Y	E	0501	1031	DR	3192	0	34687	0	12960	10819	10908	0	0	0	S
20032	FOWLER INDIVIDUAL	C	C	Y	N	0401	1130	S	24	0	241	0	0	241	0	0	0	0	S
20033	DOG CK INDIVIDUAL	C	M	Y	E	0515	1021	DR	196	0	1788	0	0	0	1788	0	0	0	S
20034	GREEN/ROYCE IND.	C	C	Y	N	0301	0228	S	73	0	440	0	0	440	0	0	0	0	S
20035	THREE BAR IND.	C	C	Y	N	0615	1215	S	24	0	440	0	0	440	0	0	0	0	S
20037	ARMELLS INDIVIDUAL	C	M	Y	P	0515	1015	S	568	0	3091	0	0	0	3091	0	0	0	S
20039	ARROW CK IND.	C	M	Y	P	1101	0228	S	398	0	3718	0	0	2928	790	0	0	0	S
20040	MUTTON COULEE IND.	C	C	Y	PT	0616	0930	S	179	0	880	0	0	880	0	0	0	0	S
20045	MATTUSCHEK IND.	C	M	Y	E	0601	1031	DR	848	0	6879	0	0	6879	0	0	0	0	U
20046	KNOX RIVER IND.	C	M	Y	E	0510	1031	DR	534	0	6627	0	0	5632	95	0	0	0	U
20047	BUTLER IND.	C	C	Y	N	0301	0228	S	8	0	40	0	0	40	0	0	0	0	S
20049	SIMMONS IND.	C	C	Y	N	0601	1031	S	5	0	40	0	0	40	0	0	0	0	S
20050	SCHIFLER IND.	C	C	Y	N	0301	0228	S	102	0	438	0	0	438	0	0	0	0	S
20051	JUDITH RIVER IND.	C	M	Y	P	0301	0228	S	205	0	1417	0	0	1417	0	0	0	0	S
20052	LINSE IND.	C	C	Y	N	0301	0228	S	89	0	89	0	0	89	0	0	0	0	S
20054	LUTHER IND.	C	C	Y	N	0301	0228	S	36	0	400	0	0	400	0	0	0	0	S
20055	CUT BANK RIDGE IND.	C	C	Y	N	0415	0531	S	36	0	160	0	0	160	0	0	0	0	S
20056	THOMPSON IND.	C	C	Y	N	0301	0228	S	24	0	200	0	0	200	0	0	0	0	S
20057	MENDEL IND.	C	C	Y	N	0401	1130	S	97	0	320	0	0	320	0	0	0	0	S
20063	NORMAN RANCH IND.	C	C	Y	N	0301	0228	S	138	0	696	0	0	696	0	0	0	0	S
20064	TWO CALF NORSEKOG IND	C	I	Y	E	0415	1130	DR	1603	0	11554	0	0	11554	0	0	0	0	U
20068	PALLET IND.	C	C	Y	N	0301	0228	S	6	0	284	0	0	284	0	0	0	0	S
20069	PETERS IND.	C	C	Y	N	0601	0930	S	88	0	1537	0	0	1537	0	0	0	0	S
20070	TWO CALF INDIVIDUAL	C	M	Y	E	0615	1030	DR	1532	0	8938	0	7424	1514	0	0	0	0	U
20071	REED COULEE IND.	C	M	Y	E	0501	1031	DR	577	34	3614	0	0	3234	380	0	0	0	S
20072	PETRANEK IND.	C	C	Y	N	0301	0228	S	192	0	1401	0	0	1401	0	0	0	0	S
20074	POPNOE COULEE	C	C	Y	N	0301	0228	S	44	0	200	0	0	200	0	0	0	0	S
20075	SPRING COULEE IND.	C	M	Y	P	0610	1020	S	358	0	1639	0	0	0	1639	0	0	0	S
20076	ROEHL IND.	C	C	Y	N	0601	0831	S	30	0	600	0	0	600	0	0	0	0	S
20077	SHAMMEL IND.	C	C	Y	N	0401	1130	S	60	0	280	0	0	280	0	0	0	0	S
20079	A. STULC IND.	C	C	Y	N	0301	0228	S	180	0	1113	0	0	1113	0	0	0	0	S
20080	STULC IND.	C	C	Y	N	0301	0228	S	48	0	160	0	0	160	0	0	0	0	S
20081	W. STULC IND.	C	M	Y	E	0501	1130	DR	654	0	4179	0	0	4179	0	0	0	0	S
20082	TADEWALD IND.	C	C	Y	N	0520	1031	S	20	0	520	0	0	520	0	0	0	0	S
20083	THORNTON IND.	C	C	Y	N	0501	0930	S	72	0	1513	0	0	1513	0	0	0	0	S
20087	UDELHOVEN/ECONOM IND	C	C	Y	N	0301	0228	S	84	0	591	0	0	591	0	0	0	0	S
20088	ECONOM-UDELHOVEN IND	C	C	Y	N	0301	0228	S	78	0	400	0	0	400	0	0	0	0	S
20089	WALLING IND.	C	C	Y	N	0401	1130	S	131	0	1118	0	0	1118	0	0	0	0	S
20090	SLIDE COULEE IND	C	M	Y	E	0501	1231	DR	493	0	3436	0	0	0	3436	0	0	0	S
20091	D. WHERLEY IND.	C	C	Y	N	0501	0925	S	185	0	680	0	0	680	0	0	0	0	S
20097	ARTHUR IND.	C	C	Y	N	0401	1130	S	174	0	560	0	0	560	0	0	0	0	S
20098	OLSEN IND.	C	C	Y	N	0401	1130	S	24	0	280	0	0	280	0	0	0	0	S
20100	ARTHUR INDIVIDUAL	C	C	Y	N	0401	1130	S	174	0	560	0	0	560	0	0	0	0	S
10023	ARNTZEN INDIVIDUAL	C	M	Y	E	0508	0930	DR	215	0	720	0	0	720	0	0	0	0	U
20044	KINKELAAR IND.	C	C	Y	N	0301	0228	S	103	0	440	0	0	440	0	0	0	0	S

Allot Number	Allotment Name	Lvst Kind	Mgt Cat	Graz. Alloc	Plan Type	Grazing Season		Graz. Method	Public AUMs	Other AUMs	Public Acres	Other Acres	Ecological Status/Condition					Trend
						From	To						Excel.	Good	Fair	Poor	Unsuit	
02600	D. ABBOTT IND.	C	C	Y	N	0616	0915	S	19	0	708	0	0	354	354	0	0	S
12601	FORDS CREEK IND.	C	M	Y	E	0401	0515	DR	211	0	1120	0	0	0	1120	0	0	U
12602	BLACKMORE IND.	C	C	Y	N	0301	0228	S	61	0	256	0	0	256	0	0	0	S
02603	CATER IND.	C	C	Y	N	0701	0915	S	48	0	963	0	0	963	0	0	0	S
12604	CHARBONNEAU IND.	C	C	Y	N	0301	0228	S	79	0	320	0	0	320	0	0	0	S
02605	SEILSTAD IND.	C	C	Y	N	0501	1131	S	61	0	320	0	0	320	0	0	0	S
02606	D. COX IND.	C	C	Y	N	0301	0228	S	248	0	1520	0	0	1520	0	0	0	S
12607	B. COX IND.	C	C	Y	N	0301	0228	S	167	0	642	0	0	642	0	0	0	S
02682	DESCHEEMAER INDI.	C	C	Y	N	0301	0228	S	74	0	240	0	0	240	0	0	0	S
02609	FOX IND.	C	C	Y	N	0301	0228	S	158	0	954	0	0	954	0	0	0	S
12610	CRIPPS IND.	C	C	Y	N	0601	0930	S	21	0	249	0	0	249	0	0	0	S
02611	DEGNER IND.	C	C	Y	N	0301	0228	S	559	0	2718	0	0	2718	0	0	0	S
12700	FORGY COMMON	C	M	Y	E	0516	1015	DR	373	0	1730	0	0	1730	0	0	0	S
12612	WESTPHAL IND.	C	C	Y	N	0301	0228	S	45	0	328	0	0	328	0	0	0	S
02615	D&M DUFFY IND.	C	C	Y	N	0301	0228	S	71	0	863	0	0	863	0	0	0	S
02616	LARSON IND.	C	C	Y	N	0301	0228	S	102	0	440	0	0	440	0	0	0	S
02617	R&C DUFFY IND.	C	M	Y	E	0716	0915	DR	80	0	1817	0	1817	0	0	0	0	S
02618	EICKHOFF IND.	C	M	Y	N	0301	0228	S	154	0	517	0	0	517	0	0	0	S
02619	EIKE PLACE/WAGNER	C	C	Y	N	0501	1231	S	47	0	207	0	0	207	0	0	0	S
02651	WAGNER IND.	C	C	Y	N	0301	0228	S	45	0	200	0	0	200	0	0	0	S
02620	RICHARD/STAHL IND.	C	C	Y	N	0501	0731	S	272	0	1560	0	0	1560	0	0	0	S
12608	L DESCHEEMAER INDI.	C	C	Y	N	0301	0228	S	204	0	720	0	0	720	0	0	0	S
02622	FLEHARTY IND.	C	C	Y	N	0301	0228	S	26	0	152	0	0	152	0	0	0	S
02623	FORAN IND.	C	C	Y	N	0301	0228	S	66	0	359	0	0	359	0	0	0	S
02624	KEEFER IND.	C	C	Y	N	0301	0228	S	119	0	738	0	0	738	0	0	0	S
12625	FRENCH IND.	C	C	Y	N	0301	0228	S	60	0	160	0	0	160	0	0	0	S
02626	GRASS RANGE AMP	C	M	Y	E	0515	0915	DR	176	0	520	0	0	520	0	0	0	S
02627	GILPATRICK IND.	C	M	Y	P	0301	0228	S	49	0	1016	0	0	1016	0	0	0	S
02629	MITCHELL IND.	C	C	Y	N	0301	0228	S	1	0	40	0	0	40	0	0	0	S
02631	HALA IND.	C	C	Y	N	0301	0228	S	106	0	413	0	0	413	0	0	0	S
02633	HEIL IND.	C	C	Y	N	0301	0228	S	258	0	0	0	0	258	0	0	0	S
02634	REDDING IND.	C	C	Y	N	0301	0228	S	61	0	220	0	0	220	0	0	0	S
02632	VLASTELIC.	C	C	Y	N	0301	0228	S	53	0	200	0	0	200	0	0	0	S
02635	HOLZER IND.	C	C	Y	N	0301	0228	S	182	0	760	0	0	760	0	0	0	S
02636	HORYNA IND.	C	C	Y	N	0301	0228	S	194	0	705	0	0	705	0	0	0	S
02637	GRIMSRUD IND.	C	C	Y	N	0301	0228	S	31	0	160	0	0	160	0	0	0	S
02638	KALAL IND.	C	C	Y	N	0501	1031	S	56	0	240	0	0	240	0	0	0	S
02639	AGRA IND.	C	C	Y	N	0301	0228	S	196	0	921	0	0	921	0	0	0	S
02640	KOCH IND.	C	C	Y	N	0301	0228	S	10	0	120	0	0	120	0	0	0	S
02641	KALINA IND.	C	C	Y	N	0301	0228	S	49	0	160	0	0	160	0	0	0	S
02642	LEWIS BROS. IND.	C	C	Y	N	0301	0228	S	270	0	1566	0	0	1566	0	0	0	S
02643	LINDQUIST IND.	C	C	Y	N	0301	0228	S	86	0	269	0	0	269	0	0	0	S
02644	THREE LINKS IND.	C	C	Y	N	0401	1115	S	193	0	872	0	0	872	0	0	0	S
02645	MACK IND.	C	C	Y	N	0301	0228	S	66	0	320	0	0	320	0	0	0	S
02646	MARUSKA IND.	C	C	Y	N	0601	1015	S	194	0	957	0	0	957	0	0	0	S
02647	MATOVICH IND.	C	C	Y	N	0301	0228	S	246	0	1162	0	0	1162	0	0	0	S
02648	MELTON IND.	C	C	Y	N	0301	0228	S	41	0	240	0	0	240	0	0	0	S
02649	RIFE IND.	C	C	Y	N	0601	0831	S	138	0	702	0	0	702	0	0	0	S
02652	MONCUR IND.	C	C	Y	N	0601	1201	S	6	0	40	0	0	40	0	0	0	S

Allot Number	Allotment Name	Lvst Kind	Mgt Cat	Graz. Alloc	Plan Type	Grazing Season		Graz. Method	Public AUMs	Other AUMs	Public Acres	Other Acres	Ecological Status/Condition					Trend	
						From	To						Excel.	Good	Fair	Poor	Unsuit		
02653	MUNSON IND.	C	C	Y	N	0301	0228	S	91	0	372	0	0	372	0	0	0	0	S
02654	MURPHY IND.	C	C	Y	N	0501	1115	S	18	0	160	0	0	160	0	0	0	0	S
02655	MYERS IND.	C	C	Y	N	0301	0228	S	26	0	94	0	0	94	0	0	0	0	S
02656	NIEMI IND.	C	C	Y	N	0301	0228	S	81	0	360	0	0	360	0	0	0	0	S
02657	NOBLE IND.	C	C	Y	N	0301	0228	S	187	0	554	0	0	554	0	0	0	0	S
02659	PETERS IND.	C	C	Y	N	0301	0228	S	104	0	380	0	0	380	0	0	0	0	S
02660	PETERSON IND.	C	C	Y	N	0301	0228	S	4	0	40	0	0	40	0	0	0	0	S
02662	O-N RANCH IND.	C	C	Y	N	0301	0228	S	57	0	307	0	0	307	0	0	0	0	S
02663	RICHARDS IND.	C	C	Y	N	0301	0228	S	102	0	412	0	0	412	0	0	0	0	S
02664	RYAN IND.	C	C	Y	N	0301	0228	S	53	0	361	0	0	361	0	0	0	0	S
02665	ADAMS IND.	C	C	Y	N	0301	0228	S	61	0	160	0	0	160	0	0	0	0	S
02666	SCHULZ IND.	C	C	Y	N	0301	0228	S	164	0	701	0	0	701	0	0	0	0	S
02667	SHELTERNOOK RANCH	C	C	Y	N	0301	0228	S	51	0	1080	0	0	1080	0	0	0	0	S
02668	F. SIROKY IND.	C	C	Y	N	0301	0228	S	43	0	159	0	0	159	0	0	0	0	S
02669	R. SIROKY IND.	C	C	Y	N	0601	1031	S	36	0	160	0	0	160	0	0	0	0	S
02670	T. AND D. SIROKY IND	C	C	Y	N	0301	0228	S	124	0	640	0	0	640	0	0	0	0	S
02671	R. SMITH IND.	C	C	Y	N	0301	0228	S	87	0	329	0	0	329	0	0	0	0	S
02672	STANLEY IND.	C	C	Y	N	0301	0228	S	251	0	1020	0	0	1020	0	0	0	0	S
02673	STARK IND.	C	C	Y	N	0301	0228	S	39	0	160	0	0	160	0	0	0	0	S
02674	BOX ELDER IND.	C	C	Y	N	0501	1130	S	57	0	910	0	0	910	0	0	0	0	S
02675	TEIGEN IND.	C	C	Y	N	0301	0228	S	130	0	600	0	0	600	0	0	0	0	S
02678	A. ZAHN IND.	C	C	Y	N	0301	0228	S	8	0	40	0	0	40	0	0	0	0	S
02679	MOULTON PLACE IND.	C	C	Y	N	0301	0228	S	86	0	320	0	0	320	0	0	0	0	S
02680	FIRST CONT. CORP.	C	C	Y	N	0301	0228	S	156	0	880	0	0	880	0	0	0	0	S
02681	POETTER IND.	C	C	Y	N	0616	0915	S	10	0	836	0	0	836	0	0	0	0	S
02699	FINKBEINER EX/USE	C	C	Y	N	0301	0228	S	0	36	120	0	0	120	0	0	0	0	S
02802	AHLGREN IND.	C	C	Y	N	0301	0228	S	175	0	520	0	0	520	0	0	0	0	S
02803	BOYCE INC. IND.	C	C	Y	N	0301	0228	S	46	0	240	0	0	240	0	0	0	0	S
12804	DEGNER IND.	C	C	Y	N	0301	0228	S	16	0	40	0	0	40	0	0	0	0	S
12806	BALD BUTTE AMP	C	H	Y	E	0601	1015	DR	272	0	2163	0	0	1250	913	0	0	0	S
02807	EISELEIN IND.	C	C	Y	N	0301	0228	S	144	0	887	0	0	887	0	0	0	0	S
02808	ERICKSON IND.	C	C	Y	N	0301	0228	S	20	0	39	0	0	39	0	0	0	0	S
02809	FINKBEINER IND.	C	C	Y	N	0301	0228	S	163	0	480	0	0	480	0	0	0	0	S
02810	L. FINKBEINER IND.	C	C	Y	N	0301	0228	S	26	0	86	0	0	86	0	0	0	0	S
02811	D. FLEHARTY IND.	C	C	Y	N	0301	0228	S	12	0	40	0	0	40	0	0	0	0	S
02812	YBP-HEDMAN IND.	C	C	Y	N	0301	0228	S	57	0	720	0	0	720	0	0	0	0	S
02813	HUGHES IND.	C	C	Y	N	0301	0228	S	225	0	1238	0	0	1238	0	0	0	0	S
02814	ISAACS IND.	C	C	Y	N	0301	0228	S	70	0	280	0	0	280	0	0	0	0	S
02816	KLAKKEN IND.	C	C	Y	N	0301	0228	S	83	0	320	0	0	320	0	0	0	0	S
02817	LANKUTIS IND.	C	C	Y	N	0301	0228	S	73	0	240	0	0	240	0	0	0	0	S
02818	LEHFELDT IND.	C	C	Y	N	0301	0228	S	27	0	320	0	0	320	0	0	0	0	S
02819	LEWIS BROS. IND.	C	C	Y	N	0301	0228	S	9	0	280	0	0	280	0	0	0	0	S
02820	K. LEWIS IND.	C	C	Y	N	0301	0228	S	38	0	520	0	0	520	0	0	0	0	S
02821	N BAR N IND.	C	C	Y	N	0301	0228	S	586	0	2715	0	0	2715	0	0	0	0	S
02827	HALF MOON RANCH IND.	C	C	Y	N	0301	0228	S	91	0	1120	0	0	1120	0	0	0	0	S
02823	D. SMITH IND.	C	C	Y	N	0301	0228	S	75	0	240	0	0	240	0	0	0	0	S
02824	BENDER CREEK IND.	C	C	Y	N	0301	0228	S	27	0	125	0	0	125	0	0	0	0	S
02825	PHILPS IND.	C	C	Y	N	0301	0228	S	92	0	400	0	0	400	0	0	0	0	S
02826	PRONGHORN RANCH IND.	C	C	Y	N	0301	0228	S	145	0	1135	0	0	1135	0	0	0	0	S

Allot Number	Allotment Name	Lvst Kind	Mgt Cat	Graz. Alloc	Plan Type	Grazing Season		Graz. Method	Public AUMs	Other AUMs	Public Acres	Other Acres	Ecological Status/Condition					Trend
						From	To						Excel.	Good	Fair	Poor	Unsuit	
02829	G. SCHULZ IND.	C	C	Y	N	0301	0228	S	31	0	280	0	0	280	0	0	0	S
02830	J. SCHULTZ IND.	C	C	Y	N	0301	0228	S	206	0	720	0	0	720	0	0	0	S
02831	STANLEY BROS. IND.	C	C	Y	N	0301	0228	S	46	0	160	0	0	160	0	0	0	S
04824	BENSON IND.	C	M	Y	P	0516	1031	S	401	0	2378	0	0	1500	878	0	0	S
04827	FRASER LAND & LIVE	C	C	Y	N	0389	0290	S	192	0	1336	0	0	998	338	0	0	S
04830	ROWTON IND.	C	C	Y	N	0301	0228	S	59	0	354	0	0	354	0	0	0	S
04831	SHAW IND.	C	C	Y	N	0301	0228	S	15	0	80	0	0	80	0	0	0	S
04838	DOBSON/VONTVER IND.	C	C	Y	N	0501	1031	S	156	0	794	0	0	794	0	0	0	S
04839	DUTTON IND.	C	M	Y	E	0501	1130	DR	596	0	3941	0	0	3100	841	0	0	S
15130	KOENIG IND.	C	M	Y	P	0501	1031	S	328	0	1331	0	0	1331	0	0	0	S
04841	HANSON PLACE IND.	C	M	Y	P	0501	1031	S	1553	0	10150	0	0	6820	3330	0	0	S
04842	MANUEL IND.	C	M	Y	P	0501	1231	S	403	0	1581	0	0	1200	381	0	0	S
04843	MESERVE IND.	C	M	Y	P	0415	1215	S	520	0	2348	0	0	2120	248	0	0	S
04844	CAT CREEK AMP	C	M	Y	E	0501	1031	DR	476	0	3164	0	0	2760	404	0	0	S
04851	SHAW IND.	C	C	Y	N	0301	0228	S	57	0	295	0	0	295	0	0	0	S
04852	SOLF BROTHERS	C	M	Y	E	0601	1031	DR	684	0	3457	0	0	2980	477	0	0	S
04853	MANUEL RANCH INC.	C	C	Y	N	0515	1031	S	12	0	52	0	0	52	0	0	0	S
04854	BOX ELDER L & L IND.	C	C	Y	N	0301	0228	S	219	0	680	0	0	680	0	0	0	S
15040	BARTLETT IND.	C	M	Y	E	0506	1031	DR	354	0	1901	0	0	1600	301	0	0	S
15043	BASSETT IND.	C	M	Y	P	0415	1130	S	963	0	4280	0	0	4280	0	0	0	S
04858	BOHN RANCH IND.	C	M	Y	N	0515	0930	S	1121	0	5003	0	0	4600	403	0	0	S
15064	SHEEP WAGON ALLOT.	C	M	Y	E	0501	1130	DR	854	0	2944	0	0	2944	0	0	0	S
05057	GARDNER IND.	C	M	Y	P	0505	1231	S	1402	0	6330	0	0	5000	1330	0	0	S
15023	FCC IND.	C	C	Y	N	0301	0228	S	1071	0	4825	0	0	4825	0	0	0	S
04849	FCC IND.	C	M	Y	P	0501	1231	S	4858	0	36223	0	5620	21098	8660	845	0	S
15147	BARNEY PLACE	C	M	Y	E	0601	0922	S	481	0	2651	0	0	1980	671	0	0	S
15059	BIG SKY ALLOT.	C	M	Y	E	0505	1130	RR	2568	0	10103	0	0	9013	1090	0	0	S
04865	DOMAN IND.	C	I	Y	E	0601	1115	S	404	0	1377	0	0	960	417	0	0	S
15063	EAGER RANCH	C	M	Y	P	0501	1031	S	979	0	3720	0	0	2110	610	0	0	S
15066	EIKE IND.	C	M	Y	P	0515	1118	S	304	0	2409	0	0	1998	511	0	0	S
04868	FLEHARYT IND.	C	C	Y	N	0301	0228	S	210	0	812	0	0	812	0	0	0	S
04869	FRASER IND.	C	C	Y	N	0301	0228	S	205	0	1050	0	0	510	510	0	0	S
04870	LOWER BLOOD CREEK	C	M	Y	E	0501	1231	S	892	0	7826	0	6901	925	0	0	0	S
04871	GERSMEL IND.	C	C	Y	N	0301	0228	S	24	0	120	0	0	120	0	0	0	S
15069	HALE RANCH IND.	C	C	Y	N	0501	1231	S	1037	0	4355	0	0	3786	569	0	0	S
15153	EV BRADY IND.	C	M	Y	E	0516	1115	DR	324	0	1490	0	0	984	506	0	0	S
04874	DOUG DELANEY IND.	C	C	Y	N	0301	0228	S	459	0	1830	0	0	1490	348	0	0	S
15072	DAVE HEDMAN IND.	C	M	Y	P	0405	1115	S	1011	0	5250	0	0	3928	989	333	0	S
04876	HILL IND.	C	C	Y	N	0301	0228	S	105	0	440	0	0	440	0	0	0	S
15139	JACK HUGHES IND.	C	C	Y	N	0301	0228	S	1330	0	5985	0	0	5099	886	0	0	S
15146	NORTH FLATWILLOW	C	M	Y	E	0501	1031	DR	830	0	4870	0	0	3900	893	77	0	S
15070	SILVER SAGE RANCH	C	C	Y	N	0301	0228	S	221	0	700	0	0	700	0	0	0	S
04480	J. IVERSON IND.	C	M	Y	P	0515	0908	S	375	0	2570	0	0	1402	1168	0	0	S
05018	JOHNSON IND.	C	M	Y	P	0505	1104	S	173	0	792	0	0	600	192	0	0	S
15081	C.K. CATTLE CO.	C	M	Y	P	0501	1231	S	261	0	2797	0	232	2567	0	0	0	S
15078	KIMMEL IND.	C	M	Y	E	0616	0930	S	607	0	2962	0	0	1922	818	222	0	S
04884	JOE KING AND SONS	C	M	Y	E	0520	1206	RR	1361	0	6792	0	286	5406	1621	279	0	U
04885	KRUGER IND.	C	C	Y	N	0301	0228	S	39	0	228	0	0	196	32	0	0	S
04886	LEWIS BROS. IND.	C	C	Y	N	0301	0228	S	773	0	3263	0	0	3263	0	0	0	S

Allot Number	Allotment Name	Lvst Kind	Mgt Cat	Graz. Alloc	Plan Type	Grazing Season		Graz. Method	Public AUMs	Other AUMs	Public Acres	Other Acres	Ecological Status/Condition					Trend	
						From	To						Excel.	Good	Fair	Poor	Unsuit		
15016	MARKS IND.	C	M	Y	E	0515	1015	DR	982	0	4934	0	0	4126	808	0	0	0	S
05083	TRENT BROWNING IND.	C	M	Y	P	0501	1215	S	538	0	3432	0	0	3111	321	0	0	0	S
15085	MLEKUSH IND.	C	M	Y	N	0516	1020	S	368	0	1752	0	0	1549	203	0	0	0	S
04890	NEBRASKA	C	C	Y	N	0301	0228	S	1370	0	5022	0	0	5022	0	0	0	0	S
04891	BENDER AMP	C	M	Y	E	0416	1031	RR	458	0	2179	0	0	1989	290	0	0	0	S
04892	PETAJA IND.	C	C	Y	N	0501	1031	S	29	0	80	0	0	80	0	0	0	0	S
04898	REYNOLDS IND.	C	M	Y	P	0601	0831	S	289	0	1041	0	0	801	240	0	0	0	S
04894	SCHULTZ IND.	C	M	Y	P	0520	1223	S	825	0	3351	0	0	2989	362	0	0	0	S
15154	GRANTIER IND.	C	C	Y	N	0301	0228	S	132	0	440	0	0	440	0	0	0	0	S
04896	SIKVELAND IND.	C	M	Y	E	0515	0914	RR	824	0	4520	0	212	4120	188	0	0	0	S
15089	SOLF BROTHERS IND.	C	M	Y	E	0601	1130	DR	473	0	3413	0	279	2920	214	0	0	0	S
15087	STEWART IND.	C	I	Y	E	0515	0930	DR	318	0	1318	0	0	912	330	76	0	0	S
15048	P.M. TEIGEN IND.	C	M	Y	P	0520	0930	S	587	0	2614	0	0	1822	792	0	0	0	S
15109	TEIGEN LAND/LIVE IND	C	M	Y	P	0520	1031	S	3318	0	13329	0	0	13329	0	0	0	0	S
04901	PETROLIA BENCH IND.	C	C	Y	N	0301	1130	S	196	0	946	0	0	946	0	0	0	0	S
15019	BOHN IND.	C	M	Y	E	0701	1131	S	341	0	1479	0	0	1253	226	0	0	0	S
14903	D. HALE IND.	C	C	Y	N	0301	0228	S	339	0	1857	0	0	1426	431	0	0	0	S
14904	WEAVER IND.	C	C	Y	N	0301	0228	S	98	0	400	0	0	400	0	0	0	0	S
05017	WEINGART IND.	C	M	Y	E	0505	1020	DR	1646	0	5900	0	0	5120	868	0	0	0	S
14906	WHISONANT IND.	C	C	Y	N	0301	0228	S	14	0	80	0	0	80	0	0	0	0	S
14907	HUGHES IND.	C	M	Y	E	0416	1205	DR	593	0	2743	0	0	1631	1112	270	0	0	S
04909	BUSENBARK IND.	C	C	Y	N	0401	1130	S	232	0	880	0	0	880	0	0	0	0	S
14910	DELANEY IND.	C	C	Y	N	0301	0228	S	418	0	1672	0	0	1672	0	0	0	0	S
14911	PEARCE IND.	C	C	Y	N	0301	0228	S	48	0	160	0	0	160	0	0	0	0	S
14912	M. DELANEY IND.	C	C	Y	N	0301	0228	S	97	0	440	0	0	440	0	0	0	0	S
04873	D. IVERSON IND.	C	C	Y	N	0501	0703	S	22	0	90	0	0	90	0	0	0	0	S
04821	BENSON IND.	C	M	Y	P	0501	1031	S	540	0	2532	0	0	1297	1235	0	0	0	S
14952	M. BUSENBARK IND.	C	C	Y	N	0301	0228	S	30	0	160	0	0	160	0	0	0	0	S
15051	SOCHA(ESTES) IND.	C	M	Y	E	0501	1231	DR	1037	0	3798	0	0	3621	177	0	0	0	S
14969	SOCHA(JACKSON) IND.	C	M	Y	P	0501	1231	S	545	0	3785	0	0	3785	0	0	0	0	S
04956	HEDMEN IND.	C	C	Y	N	0301	0228	S	12	0	69	0	0	69	0	0	0	0	S
15025	MUSSELHELL COMMON	C	I	Y	P	0501	1013	S	2254	0	14107	0	0	14107	0	0	0	0	S
04957	IVERSON IND.	C	M	Y	E	0516	1115	RR	1715	0	10240	0	6568	2857	669	146	0	0	S
02515	SIKVELAND CR. CK.IND	C	C	Y	N	0301	0228	S	77	0	320	0	0	320	0	0	0	0	S
04959	MATOVICH IND.	C	M	Y	P	0501	1231	S	959	0	8504	0	0	7522	982	0	0	0	S
04960	MARKS IND.	C	M	Y	P	0501	1231	S	1203	0	8344	0	0	6901	1443	0	0	0	S
15027	SOCHA(MCARTHUR) IND.	C	C	Y	N	0301	0228	S	236	0	1417	0	0	1417	0	0	0	0	S
04963	SIKVELAND IND.	C	M	Y	E	0501	1231	RR	470	0	1844	0	0	1844	0	0	0	0	S
15033	TWO CROW IND.	C	C	Y	N	0301	0228	S	579	0	4630	0	0	4630	0	0	0	0	S
15028	TWO CROW(SPEAR) IND.	C	M	Y	P	1101	0430	S	2486	0	14430	0	0	12121	2317	0	0	0	S
15031	TRESCH CHAIN BUTTES	C	M	Y	P	0501	1031	S	1181	0	6744	0	0	5144	1600	0	0	0	S
04967	WEAVER IND.	C	M	Y	P	0516	0830	S	609	0	1721	0	0	1510	211	0	0	0	S
15013	SWINGING H. IND.	C	M	Y	P	0501	1025	S	2407	0	15125	0	3625	8690	3860	0	0	0	S
14988	DAMSCHEN IND.	C	C	Y	N	0301	0228	S	536	0	2998	0	0	2098	900	0	0	0	S
04990	EIKE IND.	C	M	Y	P	0515	1118	S	133	0	822	0	0	613	209	0	0	0	S
14992	FRASER LAND/LIVE IND	C	C	Y	N	0301	0228	S	216	0	1200	0	0	1200	0	0	0	0	S
14993	54 LIVESTOCK CO.	C	C	Y	N	0501	1231	S	347	0	1120	0	0	1120	0	0	0	0	S
15001	HASSETT IND.	S	C	Y	N	0401	1130	S	140	0	752	0	0	752	0	0	0	0	S
15003	F. HILL IND.	C	C	Y	N	0301	0228	S	323	0	1440	0	0	1230	210	0	0	0	S

Allot Number	Allotment Name	Lvst Kind	Mgt Cat	Graz. Alloc	Plan Type	Grazing Season		Graz. Method	Public AUMs	Other AUMs	Public Acres	Other Acres	Ecological Status/Condition					Trend
						From	To						Excel.	Good	Fair	Poor	Unsuit	
05005	KIEHL IND.	C	C	Y	N	0601	1231	S	173	0	808	0	0	808	0	0	0	S
25007	W. KINCHELOE IND.	C	C	Y	N	0301	0228	S	18	0	80	0	0	80	0	0	0	S
15009	MAXWELL IND.	S	C	Y	N	0301	0228	S	252	0	1680	0	0	1680	0	0	0	U
15010	MUSSELSHELL IND.	C	C	Y	N	0301	0228	S	48	0	280	0	0	280	0	0	0	S
15115	BROWNING IND.	C	M	Y	E	0501	1031	DR	683	0	4766	0	0	4766	0	0	0	S
15014	WIGGINS IND.	S	C	Y	N	0301	0228	S	151	0	680	0	0	680	0	0	0	S
15118	L.GOFFENA IND.	C	C	Y	N	0301	0228	S	278	0	1000	0	0	1000	0	0	0	S
15119	A. GOFFENA IND.	C	C	Y	N	0501	1231	S	231	0	720	0	0	720	0	0	0	S
15121	TEINI IND.	C	C	Y	N	0501	1231	S	31	0	283	0	0	283	0	0	0	S
04859	J. BRADY IND.	C	C	Y	N	0301	0228	S	7	0	30	0	0	30	0	0	0	S
15135	G.BRADY IND.	C	C	Y	N	0301	0228	S	8	0	40	0	0	40	0	0	0	S
15137	H. STENSVAD IND.	C	M	Y	N	0301	0228	S	3	0	40	0	0	40	0	0	0	S
15151	HUGHE BROTHER IND.	C	M	Y	P	0601	1101	S	840	0	3937	0	0	3621	316	0	0	S
09649	ABN RANCH INC.	C	C	Y	N	0401	0101	S	66	0	237	0	0	200	67	0	0	S
09653	ABLE PLACE	C	M	Y	P	0501	1201	DR	360	0	2609	0	0	2000	609	0	0	S
19655	ARNST IND.	C	C	Y	N	0815	1101	S	19	0	160	0	0	160	0	0	0	S
09656	APPEGATE IND.	C	M	Y	P	0610	1120	S	366	0	5273	0	0	4200	1073	0	0	S
19807	BAILEY L. AND L. IND	C	C	Y	N	0401	1230	S	29	0	149	0	0	120	29	0	0	S
09664	BIG VIEW RANCH IND.	C	C	Y	N	0301	0228	S	11	0	124	0	0	124	0	0	0	S
09665	NEBEL COULEE IND.	C	M	Y	P	0601	1031	S	59	0	543	0	0	243	300	0	0	S
09666	BOEMAN IND.	C	C	Y	N	0301	0228	S	48	0	240	0	0	240	0	0	0	S
09668	J. BRONEC IND.	C	C	Y	N	0301	0228	S	10	0	40	0	0	40	0	0	0	S
09670	T. AND J. BRONEC IND	C	C	Y	N	0301	0228	S	37	0	120	0	0	120	0	0	0	S
19673	BURCHAK IND.	C	C	Y	N	0301	0228	S	11	0	120	0	0	120	0	0	0	S
09679	CHAMBERLAIN IND.	C	C	Y	N	0301	0228	S	26	0	298	0	0	298	0	0	0	S
09681	CLARK IND.	C	C	Y	N	0601	1031	S	23	0	160	0	0	160	0	0	0	S
09683	COPPEDGE IND.	C	C	Y	P	0301	0228	S	288	0	2591	0	0	2000	591	0	0	S
09687	DAMMEL IND.	N	C	Y	N	0501	0930	S	138	0	905	0	0	905	0	0	0	S
19691	G. DEMARS IND.	C	C	Y	N	0601	0815	S	39	0	670	0	0	670	0	0	0	S
09692	DIEKHANS IND.	C	C	Y	N	0301	0228	S	55	0	235	0	0	235	0	0	0	S
09695	G&H DOVER IND.	C	C	Y	N	0401	1130	S	17	0	119	0	0	119	0	0	0	S
09693	DOSTAL AMP	C	M	Y	E	0501	1031	DR	320	0	2568	0	0	1900	668	0	0	S
09700	DUVALL BROS. IND.	C	C	Y	N	0301	0228	S	123	0	515	0	0	400	115	0	0	S
09703	ELLIS IND.	C	M	Y	P	0301	0228	S	157	0	1503	0	0	900	603	0	0	S
09705	ENGELLANT IND.	C	C	Y	N	0301	0228	S	8	0	40	0	0	40	0	0	0	S
09706	WILDA IND.	C	C	Y	N	0301	0228	S	8	0	0	0	0	40	0	0	0	S
09711	FLANAGAN IND.	C	C	Y	N	0301	0228	S	48	0	121	0	0	121	0	0	0	S
09714	FULTZ IND.	C	C	Y	N	0301	0228	S	172	0	1174	0	0	800	374	0	0	S
09724	W. SNAPP IND.	C	M	Y	P	0701	0831	S	50	0	1336	0	0	1336	0	0	0	S
09725	LOST LAKE RANCH	C	C	Y	N	0501	1101	S	11	0	121	0	0	121	0	0	0	S
09662	HENDERSON IND.	C	C	Y	N	0301	0228	S	97	0	800	0	0	550	250	0	0	S
09729	HICKS AND SONS INC.	C	C	Y	N	0516	1115	S	104	0	820	0	0	500	320	0	0	S
19730	HARLOW IND.	C	C	Y	N	0601	0831	S	64	0	200	0	0	200	0	0	0	S
19737	HUGHES LIVESTOCK CO.	C	C	Y	N	0301	0228	S	16	0	80	0	0	80	0	0	0	S
09738	HUGHES AND SONS	C	C	Y	N	0301	0228	S	7	0	120	0	0	120	0	0	0	S
19741	JENNI IND.	C	C	Y	N	0301	0228	S	35	0	1291	0	0	850	441	0	0	S
09745	KILLHAM IND.	C	C	Y	N	0301	0228	S	12	0	40	0	0	40	0	0	0	S
09746	KINGSBURY IND.	C	C	Y	N	0401	1130	S	31	0	165	0	0	125	40	0	0	S
09749	WINDERL IND	C	C	Y	N	0515	1020	S	16	0	160	0	0	160	0	0	0	S

Allot Number	Allotment Name	Lvst Kind	Mgt Cat	Graz. Alloc	Plan Type	Grazing Season		Graz. Method	Public AUMs	Other AUMs	Public Acres	Other Acres	Ecological Status/Condition					Trend
						From	To						Excel.	Good	Fair	Poor	Unsuit	
09750	KLIND IND.	C	C	Y	N	0601	1215	S	8	0	40	0	0	40	0	0	0	S
19824	SIX DIAMOND INC.	C	C	Y	N	0415	1031	S	8	0	40	0	0	40	0	0	0	S
09751	KOCHIVAR BROS. IND.	C	C	Y	N	0301	0228	S	8	0	80	0	0	80	0	0	0	S
09753	KOSKI IND.	C	M	Y	P	0301	0228	S	115	0	1929	0	0	1500	429	0	0	S
09754	KURTH IND.	C	C	Y	N	0616	1015	S	4	0	28	0	0	28	0	0	0	S
09755	LAABARRE IND.	C	C	Y	P	0515	1215	S	123	0	1236	0	836	400	0	0	0	S
09759	LEACH IND.	C	C	Y	N	0401	1201	S	39	0	538	0	0	400	138	0	0	S
09761	LITTLE IND.	C	C	Y	P	0301	0228	S	153	0	2079	0	0	1440	639	0	0	S
09763	ARNBERG IND.	C	C	Y	N	0301	0228	S	7	0	80	0	0	80	0	0	0	S
09764	CARTWRIGHT IND.	C	C	Y	N	0301	0228	S	23	0	320	0	0	200	120	0	0	S
09766	MACDONALD FARMS INC.	C	C	Y	N	0301	0228	S	42	0	197	0	0	147	50	0	0	S
09767	MACDONALD L. IND.	C	C	Y	N	0301	0228	S	66	0	253	0	0	200	53	0	0	S
09770	MANLEY IND.	C	C	Y	N	0301	0228	S	11	0	40	0	0	40	0	0	0	S
09775	CATTLE CORP. IND.	C	C	Y	N	0601	1015	S	66	0	263	0	0	220	43	0	0	S
09776	MERRIMAC CATTLE CO.	C	C	Y	N	0501	1031	S	59	0	400	0	0	320	80	0	0	S
09777	MITTAL IND.	C	M	Y	P	0301	0228	S	115	0	594	0	0	0	594	0	0	S
09778	H. MITTAL IND.	C	M	Y	P	0301	0228	S	263	0	2725	0	0	2200	525	0	0	S
09866	MOLINE IND.	C	C	Y	N	0401	1231	S	210	0	1207	0	0	800	407	0	0	S
09782	EBELING IND.	C	C	Y	N	0301	0228	S	49	0	514	0	0	400	114	0	0	S
09783	ARROW CREEK IND.	C	C	Y	P	0301	0228	S	227	0	2401	0	0	2000	401	0	0	S
09787	NEVERSWEAT IND.	C	C	Y	N	0301	0228	S	47	0	720	0	0	600	120	0	0	S
09788	NORMAN RANCH IND.	C	C	Y	N	0301	0228	S	17	0	66	0	0	66	0	0	0	S
09790	OLSON IND.	C	C	Y	N	0301	0228	S	37	0	357	0	0	357	0	0	0	S
09826	FLAT CREEK	C	M	Y	E	0801	1015	S	80	0	704	0	0	550	154	0	0	S
09793	PALMER IND.	C	C	Y	N	0301	0228	S	20	0	400	0	0	300	100	0	0	S
09794	PERES IND.	C	C	Y	N	0801	1101	S	12	0	129	0	0	129	0	0	0	S
09795	PERRY IND.	C	C	Y	N	0301	0228	S	90	0	519	0	0	400	119	0	0	S
09796	PHILLIPS IND.	C	C	Y	N	0301	0228	S	8	0	33	0	0	33	0	0	0	S
09797	EVANS BEND IND.	C	M	Y	E	0501	0228	S	198	0	1694	0	0	1000	694	0	0	S
09798	PN IND.	C	C	Y	N	0301	0228	S	9	0	40	0	0	40	0	0	0	S
09799	QUNELL IND.	C	C	Y	N	0301	0228	S	94	0	625	0	0	400	225	0	0	S
09802	RITLAND IND.	C	C	Y	N	0301	0228	S	7	0	34	0	0	34	0	0	0	S
09808	JARACZESKI IND.	C	C	Y	P	0801	1231	S	291	0	958	0	0	800	158	0	0	S
09811	SALISBURY IND.	C	C	Y	N	0301	0228	S	32	0	320	0	0	200	120	0	0	S
09813	SANDMEYER IND.	C	C	Y	N	0515	0101	S	32	0	202	0	0	202	0	0	0	S
19814	COWBOY STEELE IND.	C	C	Y	P	0601	1231	S	218	0	3360	0	0	2260	1100	0	0	S
09815	SCHMITT IND.	C	C	Y	N	0301	0228	S	32	0	161	0	0	161	0	0	0	S
09816	VERNON IND.	C	C	Y	N	0501	1031	S	18	0	94	0	0	94	0	0	0	S
09817	SEILSTAD IND.	C	C	Y	N	0401	1228	S	11	0	80	0	0	80	0	0	0	S
09819	SKELTON IND.	C	C	Y	N	0301	0228	S	85	0	280	0	0	280	0	0	0	S
09825	STEVEN IND.	C	C	Y	N	0401	1230	S	41	0	252	0	0	180	72	0	0	S
09785	FLAT CREEK ALLOT.	C	M	Y	E	0301	1130	S	219	0	1752	0	0	1500	252	0	0	S
09827	STRAND IND.	C	C	Y	N	0301	0228	S	7	0	121	0	0	121	0	0	0	S
09828	L. STRAND IND.	C	C	Y	N	0601	1031	S	36	0	320	0	0	200	120	0	0	S
09829	SURPRISE CREEK	C	C	Y	N	0501	1025	S	39	0	160	0	0	100	60	0	0	S
09830	SWAN & PASHA IND.	C	C	Y	N	0301	0228	S	4	0	40	0	0	40	0	0	0	S
09831	SZARZEC IND.	C	C	Y	N	0515	1001	S	25	0	160	0	0	160	0	0	0	S
09833	TADEVICK IND.	C	C	Y	N	0301	0228	S	15	0	34	0	0	34	0	0	0	S
09834	TAYLOR IND.	C	C	Y	N	0301	0228	S	30	0	280	0	0	200	80	0	0	S

Allot Number	Allotment Name	Lvst Kind	Mgt Cat	Graz. Alloc	Plan Type	Grazing Season		Graz. Method	Public AUMs	Other AUMs	Public Acres	Other Acres	Ecological Status/Condition					Trend	
						From	To						Excel.	Good	Fair	Poor	Unsuit		
19835	HOYT IND.	C	C	Y	N	0401	1130	S	6	0	40	0	0	40	0	0	0	0	S
09839	HOME PLACE	C	C	Y	N	0301	0228	S	64	0	320	0	0	320	0	0	0	0	S
19837	BREWER PLACE	C	M	Y	E	0601	0915	S	466	0	4740	0	0	4740	0	0	0	0	S
09841	URQUHART IND.	C	C	Y	N	0801	0228	S	49	0	373	0	0	300	73	0	0	0	S
19844	VAN VOAST IND.	C	C	Y	N	0601	1001	S	25	0	80	0	0	80	0	0	0	0	S
09845	VIDAL IND.	C	C	Y	N	0301	0228	S	12	0	40	0	0	40	0	0	0	0	S
09847	WALTON IND.	C	M	Y	E	0501	1231	S	121	0	1161	0	0	735	426	0	0	0	S
09848	SPRING CREEK COLONY	C	C	Y	N	0301	0228	S	54	0	200	0	0	150	50	0	0	0	S
09852	SHEPARD IND.	C	C	Y	N	0301	0228	S	24	0	160	0	0	120	40	0	0	0	S
09853	ROBERTSON IND.	C	C	Y	N	0301	0228	S	13	0	40	0	0	40	0	0	0	0	S
09854	ZANTO IND.	C	C	Y	N	0601	1231	S	8	0	40	0	0	40	0	0	0	0	S
09856	DUFOUR IND.	C	C	Y	N	0301	0228	S	37	0	520	0	0	520	0	0	0	0	S
09859	W. HILL IND.	C	C	Y	N	0301	0228	S	16	0	80	0	0	80	0	0	0	0	S
09860	MAYO IND.	C	C	Y	N	0501	1130	S	7	0	95	0	0	60	35	0	0	0	S
09861	J. HILL IND.	C	C	Y	P	0301	0228	S	213	0	3080	0	0	2340	748	0	0	0	S
09862	BARBER IND.	C	C	Y	N	0401	1115	S	4	0	40	0	0	40	0	0	0	0	S
09864	AYERS IND.	C	C	Y	N	0301	0228	S	31	0	246	0	0	201	45	0	0	0	S

VALLEY RESOURCE AREA

Allot Number	Allotment Name	Lvst Kind	Mgt Cat	Graz. Alloc	Plan Type	Grazing Season		Graz. Method	Public AUMs	Other AUMs	Public Acres	Other Acres	Ecological Status/Condition					Trend
						From	To						Excel.	Good	Fair	Poor	Unsuit	
4001	CROW CREEK	C	M	Y	E	0601	0930	S	370	0	2480	1614	0	912	1415	0	153	S
4002	UPPER BLUFF CREEK	C	M	Y	E	0501	1015	RR	586	0	3064	1817	27	1710	1295	0	32	S
4003	UPPER EASTFORK CROW	C	I	Y	E	0621	0930	RR	944	0	5588	409	0	2068	3326	0	194	U
4004		C	M	Y	N	0301	0228	S	10	0	46	0	0	46	0	0	0	S
4000	UPPER CROW CREEK	C	I	Y	E	0515	1015	DR	824	0	4466	1120	62	1458	2937	0	9	U
4005	FLINT RESERVOIR	C	I	Y	P	0601	0930	S	330	0	1443	324	0	179	1264	0	0	S
4006	BLUFF CREEK	C	M	Y	PT	0616	0910	S	286	0	1885	1614	0	944	941	0	0	S
4007		C	C	Y	N	0401	1031	S	7	0	52	0	0	4	48	0	0	S
4008	WESTFORK BLUFF CR.	C	I	Y	E	0501	1016	RR	787	0	4090	2186	0	703	3250	78	59	S
4009	CHAMBERS CREEK	C	I	Y	E	0515	0930	DR	347	0	1511	240	0	293	1218	0	0	S
4010		C	M	Y	PT	0401	1209	S	574	0	2687	1357	0	1618	1069	0	0	S
4011		C	M	Y	PT	1001	1130	S	28	0	129	1027	0	93	35	0	1	S
4012	LOWER TOMATO CREEK	C	M	Y	E	0501	1226	DR	984	0	5239	1250	55	4062	1078	0	44	S
4013	NORTH TOMATO CREEK	C	M	Y	PT	0716	1020	S	287	0	1439	27	122	841	478	0	0	S
4014	NORTHFORK ROCK CREEK	C	M	Y	E	0520	1013	S	647	0	3775	2363	0	1809	1941	0	25	S
4015	SOUTH CREEK	C	I	Y	E	0505	1031	S	2268	0	12427	6474	433	4966	6980	0	48	S
4016	UPPER MORGAN CREEK	C	M	Y	PT	0515	1015	S	156	0	1194	1400	0	684	497	0	13	S
4017	MORGAN CREEK	C	M	Y	N	0301	0228	S	28	0	415	0	0	415	0	0	0	S
4018	UPPER SOUTH CREEK	C	M	Y	N	0301	0228	S	254	0	1440	0	0	1350	83	0	7	S
4019	SNAKE CREEK	C	I	Y	E	0601	1030	S	981	0	7073	454	0	1465	5286	0	322	S
4021	UPPER LITTLE SNAKE	C	M	Y	PT	0416	1115	S	253	0	1479	0	0	579	893	0	7	S
4022	LOWER BLUFF CREEK	C	M	Y	E	0501	0930	RR	798	0	4459	1360	0	2826	1633	0	0	S
4023	CHAMBERS COULEE	C	M	Y	E	0501	0930	DR	749	0	4909	885	0	3093	1538	0	278	S
4024	DIVIDE	C	I	Y	E	0601	1015	S	1092	0	6868	2712	74	1250	4758	0	786	S
4025	SOUTHFORK ROCK CREEK	C	I	Y	P	0501	1115	S	1896	0	9243	2329	74	3102	5872	5	190	S
4026		C	M	Y	PT	0515	1115	S	321	0	1520	1490	0	1058	460	0	2	S

Allot Number	Allotment Name	Lvst Kind	Mgt Cat	Graz. Alloc	Plan Type	Grazing Season		Graz. Method	Public AUMs	Other AUMs	Public Acres	Other Acres	Ecological Status/Condition					Trend
						From	To						Excel.	Good	Fair	Poor	Unsuit.	
4027		C	M	Y	N	0301	0228	S	15	0	124	0	0	39	85	0	0	S
4028		C	C	Y	N	0401	0720	S	44	0	200	0	0	5	195	0	0	S
4029		C	M	Y	PT	0501	1001	S	165	0	800	200	0	530	270	0	0	S
4031		C	M	Y	PT	0401	0503	S	150	0	803	0	0	774	29	0	0	S
4032	LOWER SNAKE CREEK	C	M	Y	PT	0501	0928	S	651	0	3991	1440	0	2268	1688	0	35	S
4033		C	M	Y	N	0301	0228	S	7	0	40	0	0	40	0	0	0	S
4034		C	I	Y	N	0301	0228	S	64	0	466	0	0	181	285	0	0	S
4035	LITTLE SNAKE CREEK	C	I	Y	PT	0601	1001	S	94	0	383	0	0	106	277	0	0	S
4036		C	C	Y	N	0601	1001	S	7	0	40	0	0	0	40	0	0	S
4037		C	M	Y	PT	0615	0705	S	117	0	562	195	0	544	18	0	0	S
4038		C	M	Y	PT	0601	0804	S	159	0	798	40	0	253	545	0	0	S
4041	ANDERSON-OJUEL	C	I	Y	E	0515	0907	RR	2572	0	17132	8518	1078	5985	8869	0	1200	U
4042		C	M	Y	N	0301	0228	S	99	0	490	0	0	473	14	0	3	S
4043	SHAW COULEE	C	M	Y	N	0401	1231	S	9	0	49	0	0	38	8	0	2	S
4044		C	C	Y	PT	0501	0731	S	94	0	399	0	0	33	366	0	0	S
4047	UPPER WESTFORK CACHE	C	C	Y	N	0301	0228	S	64	0	404	0	0	0	404	0	0	S
4049		C	M	Y	PT	0301	0228	S	100	0	487	0	147	270	70	0	0	S
4051		C	M	Y	N	0301	0228	S	22	0	120	0	0	109	11	0	0	S
4052		C	I	Y	PT	0501	0925	S	231	0	1108	465	0	347	761	0	0	S
4053	EASTFORK WILLOW CR.	C	I	Y	E	0625	1003	DR	0	0	15605	4008	0	1523	12528	0	1554	S
4054	SOUTHFORK BITTER CR.	C	I	Y	E	0415	1029	DR	0	0	27671	9000	211	16017	7502	0	3939	S
4056		C	M	Y	PT	0516	0930	S	393	0	2375	1080	0	1859	360	151	5	S
4057		C	M	Y	N	0301	0228	S	52	0	160	0	90	70	0	0	0	S
4058		C	M	Y	PT	0501	0913	S	310	0	1025	0	8	737	50	228	0	S
4059	WARDS DAM	C	M	Y	E	0501	1106	DR	535	0	2286	1440	0	1942	344	0	0	S
4061	LOWER WEST PORCUPINE	C	M	Y	PT	0601	0815	S	335	0	1276	1440	0	682	594	0	0	S
4062		C	I	Y	N	0301	0228	S	208	0	1166	0	0	402	764	0	0	S
4063		C	C	Y	N	0501	0930	S	23	0	120	0	0	76	44	0	0	S
4064		C	M	Y	N	0501	1030	S	36	0	160	0	0	160	0	0	0	S
4065		C	M	Y	N	0301	0228	S	87	0	362	0	0	15	347	0	0	S
4066	CACHE CREEK	C	M	Y	PT	0516	1015	S	244	0	998	0	0	598	400	0	0	S
4067	PAPOOSE CREEK	C	M	Y	PT	0301	0228	S	339	0	1823	1909	0	1473	350	0	0	S
4068		C	M	Y	PT	0616	0715	S	174	0	987	0	809	0	176	0	2	S
4069	LOWER UNGER COULEE	C	I	Y	E	0506	0801	DR	198	0	890	160	0	294	596	0	0	S
4070		C	M	Y	N	0401	1231	S	112	0	481	0	0	192	289	0	0	S
4071	UPPER CANYON CREEK	C	I	Y	E	0401	1031	DR	1459	0	10266	1270	0	1661	7447	0	1158	S
4073		C	C	Y	N	0301	0228	S	14	0	67	0	0	40	27	0	0	S
4075		C	M	Y	N	0301	0228	S	76	0	440	0	0	301	139	0	0	S
4076		C	M	Y	N	0301	0228	S	34	0	200	0	127	73	0	0	0	S
4077		C	M	Y	N	0301	0228	S	94	0	480	0	4	414	57	0	5	S
4078	UPPER LIME CREEK	C	M	Y	E	0601	1031	RR	504	0	3163	185	0	2641	426	0	96	S
4079	SOUTH LIME CREEK	C	M	Y	PT	0416	1031	S	456	0	2446	7	0	1722	724	0	0	S
4080	HALL COULEE	C	M	Y	PT	0401	1009	S	276	0	1548	1746	0	737	799	11	1	S
4081		C	M	Y	N	0301	0228	S	16	0	95	0	0	91	4	0	0	S
4082	BLACK COULEE	C	M	Y	PT	0415	1115	S	343	0	1754	881	0	1415	321	0	18	S
4083		C	M	Y	PT	0301	0228	S	99	0	801	160	192	576	33	0	0	S
4084		C	C	Y	N	0301	0228	S	26	0	162	0	0	123	37	0	2	S
4087	LOWER LIME CREEK	C	C	Y	N	0301	0228	S	33	0	200	0	0	83	117	0	0	S
4088	ELLSWORTH COULEE	C	I	Y	N	0301	0228	S	234	0	1281	0	0	369	910	0	2	S

Allot Number	Allotment Name	Lvst Kind	Mgt Cat	Graz. Alloc	Plan Type	Grazing Season		Graz. Method	Public AUMs	Other AUMs	Public Acres	Other Acres	Ecological Status/Condition					Trend
						From	To						Excel.	Good	Fair	Poor	Unsuit	
4089	ALKALI COULEE	C	M	Y	PT	0520	0921	S	179	0	920	240	0	382	337	199	2	S
4090	LOWER ALKALI CREEK	C	M	Y	N	0301	0228	S	55	0	320	0	0	268	52	0	0	S
4091	LOWER BEAR CREEK	C	C	Y	PT	0510	0923	S	168	0	800	472	0	360	439	0	1	S
4092	UPPER UNGER COULEE	C	I	Y	E	0701	1101	S	411	0	2090	1772	0	534	1512	0	44	S
4096		C	C	Y	N	0901	1025	S	55	0	318	0	0	0	318	0	0	S
4097	EASTFORK CACHE CREEK	C	M	Y	PT	0301	0228	S	99	0	531	0	0	374	157	0	0	S
4098		C	M	Y	PT	0301	0228	S	37	0	160	65	0	91	69	0	0	S
4099	UNGER COULEE	C	M	Y	PT	0601	0901	S	111	0	606	160	0	368	238	0	0	S
4200	LOWER PORCUPINE CR.	C	M	Y	PT	0501	1101	S	87	0	672	0	0	319	293	0	60	S
4201		C	M	Y	N	0601	0731	S	6	0	40	0	0	40	0	0	0	S
4202	LENZ COULEE	C	M	Y	N	0301	0228	S	15	0	200	0	0	137	59	0	4	S
4205	BUTCH COULEE	C	C	Y	N	0501	0831	S	39	0	160	0	0	160	0	0	0	S
4207	LOWER MILK RIVER	C	C	Y	N	0301	0228	S	28	0	107	0	75	31	0	0	1	S
4208	WHEELER COULEE	C	M	Y	E	0501	1031	DR	73	0	320	0	105	210	0	0	5	U
4300	DRY FORK	C	M	Y	N	0501	0920	S	309	0	1492	0	0	915	577	0	0	S
4301	UPPER BUGGY CREEK	C	M	Y	E	0301	0228	RR	1565	0	9864	7119	0	5979	3558	0	327	U
4302	BEAR COULEE	C	I	Y	E	0515	1115	RR	3091	0	16207	3071	0	9447	6489	0	271	S
4303	BUGGY CREEK	C	I	Y	E	0415	1125	RR	2843	0	14124	18735	36	7833	6021	0	234	S
4304	PORCUPINE CREEK	C	M	Y	N	0301	0228	S	614	0	2727	0	0	1953	684	21	69	S
4306		C	M	Y	N	0301	0228	S	16	0	80	0	0	80	0	0	0	S
4307	LOWER SPRING CREEK	C	M	Y	N	0301	0228	S	63	0	240	0	7	219	14	0	0	S
4308	SPRING COULEE	C	M	Y	PT	0410	1031	S	631	0	4914	282	83	3961	794	0	76	S
4309	WESTFORK	C	M	Y	PT	0415	1108	S	754	0	2821	4145	0	2424	393	0	5	S
4500		C	C	Y	N	0301	0228	S	7	0	40	0	40	0	0	0	0	S
4501	MILES CROSSING COU	C	M	Y	N	0301	1201	S	72	0	360	0	0	360	0	0	0	S
4502	LOWER MILES CROSSING	C	C	Y	N	0301	0228	S	24	0	120	0	0	40	80	0	0	S
4504		C	M	Y	N	0501	1031	S	15	0	160	0	0	127	0	0	33	S
4505	SHAW COULEE	C	M	Y	N	0427	1020	S	63	0	459	0	0	268	162	0	29	S
4506	JERNIGAN COULEE	C	M	Y	N	0301	0228	S	90	0	543	0	0	274	184	0	85	S
4507	HORSE COULEE	C	C	Y	N	0401	1201	S	39	0	338	0	3	56	257	0	22	S
4508	LITTLE HORN COULEE	C	M	Y	N	0301	0228	S	64	0	601	0	0	267	318	0	16	S
4509	TANK COULEE	C	M	Y	N	0401	1031	S	231	0	1564	0	0	1110	454	0	0	S
4510	BIG COULEE	C	M	Y	PT	0501	1031	S	107	0	800	0	0	276	503	0	21	S
4511	KENT COULEE	C	M	Y	PT	0301	0228	S	54	0	508	0	0	508	0	0	0	S
4513	RATTLESNAKE COULEE	C	M	Y	PT	0415	1015	S	199	0	976	11	0	976	0	0	0	S
4514		C	M	Y	PT	0501	1031	S	463	0	2160	650	0	2075	85	0	0	S
4515		C	M	Y	PT	0621	0712	S	76	0	320	0	0	157	163	0	0	S
4517	WESTFORK ASH COULEE	C	M	Y	N	0301	0228	S	116	0	640	0	109	531	0	0	0	S
4518	ASH COULEE	C	I	Y	PT	0301	0228	S	172	0	750	0	0	304	446	0	0	S
4519	LARB CREEK	C	I	Y	E	0301	1030	DR	1712	0	7181	0	0	4380	2801	0	0	S
4520	MCGREGOR COULEE	C	M	Y	N	0501	1031	S	20	0	120	0	0	115	4	0	1	S
4521	UPPER BUFFALO COULEE	C	C	Y	PT	0623	1020	S	138	0	720	0	0	24	679	0	17	S
4522	BUFFALO COULEE	C	C	Y	N	0301	0228	S	24	0	130	0	0	0	125	0	5	S
4523	LOWER BUFFALO COULEE	C	M	Y	N	0401	0930	S	71	0	320	0	0	320	0	0	0	S
4524	UPPER HAY COULEE	C	C	Y	N	0301	1231	S	9	0	40	0	0	40	0	0	0	S
4526	LOWER SQUARE COULEE	C	M	Y	N	0301	0228	S	181	0	774	0	0	735	39	0	0	S
4527	SANDSTONE	C	M	Y	PT	0505	1002	S	358	0	1953	370	0	1305	648	0	0	S
4528		C	C	Y	N	0501	1031	S	35	0	120	0	0	10	110	0	0	S
4529	SQUARE COULEE	C	M	Y	PT	0501	1031	S	116	0	755	280	0	377	376	0	2	S

Allot Number	Allotment Name	Lvst Kind	Mgt Cat	Graz. Alloc	Plan Type	Grazing Season		Graz. Method	Public AUMs	Other AUMs	Public Acres	Other Acres	Ecological Status/Condition					Trend
						From	To						Excel.	Good	Fair	Poor	Unsuit	
4530	LOWER COON COULEE	C	C	Y	N	0301	1031	S	60	0	240	0	0	20	220	0	0	S
4531	UPPER SQUARE COULEE	C	C	Y	N	0401	1130	S	20	0	80	0	0	0	80	0	0	S
4532		C	M	Y	N	0315	1215	S	36	0	160	0	0	0	160	0	0	S
4533	UPPER ANTELOPE CR.	C	M	Y	PT	0501	1031	S	456	0	1800	2279	0	640	1126	0	34	S
4534	NORTHFORK ANTELOPE	C	I	Y	PT	0501	1031	S	504	0	2640	2540	0	979	1611	0	50	S
4535	SOUTHFORK ANTELOPE	C	I	Y	E	0501	1031	DR	1411	0	9338	1276	0	281	8827	0	230	S
4536	TRUAX COULEE	C	M	Y	N	0415	1115	S	405	0	2094	0	11	592	1479	0	12	S
4537	LOWER NORTHFORK ANTE	6	I	Y	PT	0601	1031	S	420	0	2280	160	0	210	2003	0	67	S
4538	LOWER HARDCRABBLE	6	I	Y	PT	0510	1109	S	229	0	1160	688	0	119	1031	0	9	S
4539	HARDCRABBLE CREEK	6	I	Y	PT	0701	1015	S	459	0	2092	1080	0	136	1923	0	33	S
4540	HAY COULEE	C	M	Y	PT	0301	0228	S	565	0	3216	2800	0	34	3112	0	70	S
4541	LOWER HAY COULEE	C	C	Y	PT	0501	1015	S	97	0	570	320	0	0	560	0	10	S
4542	ANTELOPE CREEK	C	I	Y	PT	0401	1115	S	801	0	4633	9064	23	1878	2618	0	114	S
4543	LOWER ANTELOPE CR.	C	C	Y	PT	0401	1231	S	84	0	480	0	0	0	480	0	0	S
4544		C	C	Y	N	0621	0718	S	14	0	80	0	0	3	76	0	1	S
4545	TAMPICO COULEE	C	M	Y	PT	0301	0228	S	52	0	240	0	31	209	0	0	0	S
4546	LOST COULEE	C	I	Y	E	0416	1022	S	1865	0	11186	599	0	5213	5006	0	967	S
4547		C	M	Y	PT	0420	0915	S	144	0	560	720	0	0	560	0	0	S
4548	BOXELDER CREEK	C	I	Y	E	0401	1015	RR	2034	0	13312	35	0	6153	6514	0	645	S
4549		C	M	Y	N	0301	0228	S	28	0	160	0	0	135	23	0	2	S
4550	SOUTH SHED COULEE	C	M	Y	E	0401	1031	S	2289	0	14166	1593	21	10367	3417	0	361	S
4551	UPPER BRAZIL CREEK	C	I	Y	E	0501	1031	DR	2808	0	26500	2560	0	5719	19745	0	1036	S
4552	UPPER LITTLE BEAVER	C	I	Y	E	0501	1031	DR	1032	0	11341	680	0	7402	3210	0	729	S
4553	BRAZIL CREEK	C	I	Y	E	0501	1115	DR	3503	0	26593	5269	0	9004	16938	0	651	S
4554	LOWER SOUTHFORK ANTE	C	I	Y	E	0508	1105	RR	483	0	6615	240	0	2892	3522	0	199	S
4555	BULLOCK COULEE	C	C	Y	PT	0609	1020	S	299	0	2016	795	0	711	1263	0	42	S
4556	HAY FEVER	C	C	Y	PT	0417	0608	S	101	0	660	365	0	0	640	0	20	S
4557	SECOND BRAZIL CREEK	C	I	Y	E	0501	1030	S	665	0	3073	1779	0	65	2985	0	23	S
4558	WIRENET CORRAL	C	M	Y	PT	0421	1115	S	111	0	568	0	0	0	568	0	0	S
4559		C	M	Y	PT	1016	1115	S	67	0	320	0	43	266	9	0	2	S
4560	LOWER BRAZIL CREEK	C	C	Y	PT	0501	1015	S	502	0	1870	1860	0	870	1000	0	0	S
4561	HOMESTEAD	C	M	Y	N	0320	1231	S	24	0	120	0	0	106	14	0	0	S
4562	LITTLE BRAZIL CREEK	C	M	Y	N	0301	0228	S	32	0	160	0	0	131	21	0	8	S
4563	COYOTE CREEK	C	I	Y	E	0501	1015	RR	957	0	6505	2023	0	3959	2408	38	100	S
4564	ALKALI COULEE	C	M	Y	PT	0301	0228	S	43	0	893	790	0	82	807	0	4	S
4565	THEOFIEL COULEE	C	C	Y	N	0301	0228	S	10	0	40	0	0	0	40	0	0	S
4566		C	C	Y	N	0301	0228	S	8	0	40	0	0	0	40	0	0	S
4567	GRAVEL PITS	C	M	Y	N	0415	1130	S	36	0	240	0	0	236	0	0	4	S
4569		C	C	Y	N	0310	1115	S	118	0	488	0	0	55	430	0	3	S
4570		C	C	Y	N	0301	0228	S	5	0	80	0	0	34	46	0	0	S
4571	GRANT COULEE	C	I	Y	E	0410	1130	DR	564	0	19600	808	0	7272	11836	0	492	S
4572	CORRAL COULEE	C	I	Y	E	0301	0228	DR	1314	0	8494	640	595	4417	3482	0	0	S
4573	LITTLE BEAVER CREEK	C	I	Y	P	0420	1019	S	794	0	8277	640	0	2835	5161	0	281	S
4574	HILLER COULEE	C	I	Y	E	0401	1031	RR	2300	0	22415	1525	0	1889	19598	142	786	U
4575		C	M	Y	N	0401	1031	S	12	0	302	0	0	235	53	0	14	S
4576	LOWER WILLOW CREEK	C	M	Y	E	0601	1010	RR	488	0	5340	1138	0	1391	3606	0	343	U
4577	MUD CREEK	C	I	Y	E	0620	1115	S	360	0	3635	640	0	1197	1331	1107	0	S
4578	GRANDPA COULEE	C	M	Y	E	0401	1128	RR	396	0	1914	0	0	1639	275	0	0	S
4579	UPPER LARB CREEK	C	I	Y	E	0601	1031	DR	854	0	5976	2321	219	2754	3003	0	0	U

Allot Number	Allotment Name	Lvst Kind	Mgt Cat	Graz. Alloc	Plan Type	Grazing Season		Graz. Method	Public AUMs	Other AUMs	Public Acres	Other Acres	Ecological Status/Condition					Trend
						From	To						Excel.	Good	Fair	Poor	Unsuit	
4581	LONE TREE CREEK	C	I	Y	E	0501	1031	RR	2772	0	40415	3635	587	19451	17845	2532	0	S
4582	LONE TREE HUB	C	C	Y	N	0501	1031	S	10	0	80	0	0	0	80	0	0	S
4583	LOWER LITTLE BEAVER	C	I	Y	E	0401	1030	RR	2322	0	22539	1714	0	11981	9327	1231	0	S
4584		C	C	Y	N	0401	1030	S	56	0	411	0	0	308	86	17	0	S
4585	LEWIS RESERVOIR	C	M	Y	E	0401	1030	RR	965	0	8974	169	0	6730	1884	360	0	S
4586	UPPER MUD CREEK	C	M	Y	N	0501	1015	S	232	0	2268	152	0	1200	577	491	0	S
4587	DUCK CREEK	C	M	Y	N	0601	1031	S	171	0	1440	0	0	1440	0	0	0	S
4588	TIMBER CREEK	C	M	Y	E	0301	0228	DR	1798	0	11797	5009	0	6739	5058	0	0	S
4589	SOUTHFORK WILLOW CR.	C	M	Y	E	0501	1004	DR	1138	0	9099	1023	282	8455	362	0	0	S
4590	WILLOW CREEK	C	M	Y	E	0401	1030	RR	4534	0	60387	7485	553	45770	11972	2092	0	S
4591	SUTHERLAND	C	C	Y	N	0501	1031	S	186	0	874	0	0	874	0	0	0	S
4592	BOMBER COULEE	C	M	Y	E	0401	1030	RR	1025	0	14321	620	0	10741	3007	573	0	S
4593	SKUNK COULEE	C	M	Y	N	0418	1126	S	265	0	2640	200	1205	1435	0	0	0	S
4595	CARPENTER CREEK	C	I	Y	E	0301	0228	DR	14180	0	130399	24671	13384	98373	18642	0	0	S
4596	MATADOR CREEK	C	M	Y	E	1026	0228	S	613	0	3162	2614	0	2696	466	0	0	S
4597		C	C	Y	N	0301	0430	S	7	0	40	0	0	40	0	0	0	S
4598	SEVEN POINT	C	M	Y	E	0501	1031	RR	2102	0	14827	4249	1534	11570	1723	0	0	S
4600	CABIN COULEE	C	M	Y	P	0301	0228	S	875	0	5669	0	5376	293	0	0	0	S
4650	ROANWOOD COULEE	C	M	Y	PT	0515	0930	S	68	0	400	0	82	212	106	0	0	S
4651	UPPER POPLAR RIVER	C	M	Y	N	0501	1030	S	30	0	160	0	0	125	33	0	2	S
4652	NO. ROANWOOD COULEE	C	M	Y	PT	0601	1015	S	54	0	320	0	0	275	45	0	0	S
4653	WEST COAL CREEK	C	C	Y	N	0301	0228	S	23	0	160	0	0	147	13	0	0	S
4654	EAST COAL CREEK	C	M	Y	PT	0501	0831	S	46	0	320	0	0	237	83	0	0	S
4655	NORTH POPLAR RIVER	C	M	Y	PT	0420	1130	S	104	0	640	0	188	348	104	0	0	S
4656	WEST ROANWOOD COULEE	C	M	Y	N	0301	0228	S	19	0	136	0	0	136	0	0	0	S
4657	ROCK CREEK DIVIDE	C	M	Y	PT	0705	1109	S	107	0	473	0	0	385	88	0	0	S
4659	SOUTH ROANWOOD COULEE	C	M	Y	N	0701	0915	S	48	0	320	0	0	288	32	0	0	S
4660	SOUTH POPLAR RIVER	C	M	Y	PT	0501	0930	S	100	0	560	0	79	457	24	0	0	S
4661	POPLAR RIVER	C	M	Y	N	0601	0812	S	60	0	318	0	58	260	0	0	0	S
4662	LOWER POPLAR RIVER	C	M	Y	N	0301	1130	S	60	0	360	0	0	350	10	0	0	S
4663	UPPER MIDDLE PORCUPI	C	M	Y	N	0501	1031	S	54	0	320	0	0	257	63	0	0	S
4664	UPPER SPRING CREEK	C	M	Y	PT	0601	0930	S	61	0	360	0	0	327	33	0	0	S
4665	MIDDLE FORK PORCUPIN	C	M	Y	PT	0301	0228	S	117	0	720	0	277	343	100	0	0	S
4700	UPPER MCEACHRAN	C	I	Y	E	0501	0930	RR	1006	0	5124	3327	0	2496	2598	0	30	U
4701	DAVIDSON COULEE	C	I	Y	E	0610	0930	RR	1184	0	5278	977	0	2195	3013	0	70	U
4702	MCEACHRAN CREEK	C	M	Y	N	0501	1125	S	211	0	1040	0	0	746	286	0	8	S
4703	UPPER ROCK COULEE	C	I	Y	E	0501	1115	DR	794	0	3689	890	0	1195	2494	0	0	S
4704		C	M	Y	PT	0301	0228	S	141	0	520	0	0	379	127	0	14	S
4707	EASTFORK CROW CREEK	C	I	Y	E	0410	1210	DR	2378	0	15397	6314	59	6423	8325	0	590	S
4708	ICHPAIR CREEK	C	M	Y	E	0415	1031	RR	2350	0	11497	1120	158	3755	7561	0	23	S
4709		C	M	Y	PT	0401	1215	S	155	0	671	798	90	472	109	0	0	S
4710		C	M	Y	PT	0615	0715	S	88	0	390	0	0	315	75	0	0	S
4711	NORTH WILLOW CREEK	C	I	Y	E	0520	1009	DR	1851	0	9372	1920	0	3773	5212	0	387	S
4713	LOWER CROW CREEK	C	M	Y	E	0501	1103	RR	641	0	3394	631	0	1258	2127	0	9	U
4714	ROCK CREEK	C	I	Y	PT	0301	0228	S	234	0	1220	490	0	478	742	0	0	S
4715	EAST ROCK CREEK	C	M	Y	E	0415	1115	DR	264	0	2016	1654	0	977	973	0	66	S
4716	JONES COULEE	C	M	Y	E	0401	1017	RR	739	0	3664	166	344	2591	728	0	0	S
4717	WILLOW CREEK	C	M	Y	PT	0609	1115	S	927	0	3853	2113	0	1856	1684	0	313	S
4718	UPPER WILLOW CREEK	C	I	Y	E	0515	1017	RR	3944	0	24583	4672	98	10106	12253	132	1994	S

Allot Number	Allotment Name	Lvst Kind	Mgt Cat	Graz. Alloc	Plan Type	Grazing Season		Graz. Method	Public AUMs	Other AUMs	Public Acres	Other Acres	Ecological Status/Condition					Trend
						From	To						Excel.	Good	Fair	Poor	Unsuit	
4719		C	M	Y	PT	0415	0801	S	60	0	305	0	4	119	163	18	1	S
4720	OREGON RESERVOIR	C	M	Y	PT	0301	0228	S	22	0	120	0	0	114	6	0	0	S
4721	CLARA RESERVOIR	C	M	Y	PT	0510	1008	S	285	0	2563	776	176	1301	857	0	229	S
4722	BITTER CREEK	C	I	Y	E	0301	0228	RR	439	0	8082	12109	0	3241	4281	42	518	S
4723	LITTLE PAPOOSE CREEK	C	M	Y	E	0401	1115	RR	1626	0	9289	4796	681	4244	4023	10	331	S
4724	LOWER ROCK CREEK	C	C	Y	N	0301	0228	S	49	0	309	145	0	89	216	4	0	S
4725		C	M	Y	PT	0320	0101	S	64	0	337	0	15	290	27	0	5	S
4726	EAGLES NEST COULEE	C	M	Y	E	0501	1231	RR	2823	0	18058	3210	80	10449	6451	77	1001	S
4727		C	M	Y	PT	0301	1231	S	245	0	1493	0	465	866	161	0	1	S
4728	LIME CREEK	C	M	Y	PT	0420	1030	S	369	0	2292	1543	109	2055	122	6	0	S
4729	WEST ROCK CREEK	C	I	Y	E	0301	0228	S	343	0	1912	0	0	550	1337	25	0	S
4730	THOENY	C	I	Y	P	0501	1130	S	358	0	1436	970	0	574	862	0	0	S
4100		C	M	Y	PT	0301	0228	S	78	0	350	160	0	32	318	0	0	S
4101	ANTELOPE SPRING	C	M	Y	PT	0501	0901	S	163	0	875	746	0	512	352	11	0	S
4102	DRY COULEE	C	M	Y	PT	0416	1015	S	345	0	2469	482	0	1414	1055	0	0	S
4103		C	C	Y	N	0601	0830	S	110	0	413	0	0	0	324	89	0	S
4104		C	M	Y	N	0501	1031	S	96	0	420	0	0	184	152	84	0	S
4105		C	M	Y	PT	0301	0228	S	192	0	817	260	0	586	231	0	0	S
4106	UPPER RICHARDSON	C	M	Y	PT	0516	1015	S	574	0	3031	292	32	1932	1019	48	0	S
4107		C	M	Y	N	0301	0228	S	20	0	80	0	0	19	54	0	7	S
4108	UPPER MARTIN COULEE	C	C	Y	N	0501	0901	S	103	0	480	0	0	70	410	0	0	S
4109	CHERRY CREEK	C	M	Y	PT	0301	0930	S	668	0	3872	474	0	2947	759	0	166	S
4110	UPPER SCHOOL SECTION	C	M	Y	N	0301	0228	S	48	0	295	0	0	276	11	0	8	S
4111	FOSS COULEE	C	M	Y	PT	0505	1101	S	553	0	2773	360	0	1759	906	74	34	S
4112	UPPER SPRING CREEK	C	I	Y	PT	0501	1115	S	906	0	4131	3996	0	2126	1451	516	38	S
4113	SPRING COULEE	C	I	Y	P	0501	1023	S	273	0	1321	80	0	258	930	130	3	S
4114	LOWER SPRING COULEE	C	M	Y	N	0701	1231	S	18	0	93	0	0	85	7	0	1	S
4115		C	M	Y	N	0515	1017	S	119	0	640	0	0	426	203	0	11	S
4116	HAWK COULEE	C	I	Y	P	0510	1115	S	739	0	5358	1699	43	3140	1762	0	413	S
4117	CHAPMAN COULEE	C	M	Y	PT	0301	0228	S	124	0	786	800	0	725	61	0	0	S
4118	MOONEY COULEE	C	C	Y	N	0301	0228	S	58	0	346	0	0	119	227	0	0	S
4119	LOWER MOONEY COULEE	C	C	Y	N	0401	0915	S	6	0	200	0	0	66	70	64	0	S
4121	LOWER CHERRY CREEK	C	M	Y	N	0415	1001	S	166	0	640	0	0	442	198	0	0	S
4122	LOWER FOSS COULEE	C	M	Y	N	0301	1130	S	7	0	220	0	0	149	71	0	0	S
4124	EAST CHERRY CREEK	C	M	Y	N	0330	1120	S	108	0	734	0	0	33	701	0	0	S
4125	LOWER PORCUPINE CR.	C	M	Y	PT	0301	0228	S	30	0	290	0	0	158	78	0	54	S
4126	DRY WEST	C	M	Y	N	0301	0228	S	88	0	400	173	5	393	0	0	2	S
4127		C	M	Y	N	0501	0915	S	16	0	80	0	0	80	0	0	0	S
4128	MIDDLE FOSS COULEE	C	M	Y	N	0415	1015	S	588	0	860	50	0	594	266	0	0	S
4129	CHERRY CREEK FORKS	C	M	Y	N	0316	1116	S	31	0	160	0	0	111	49	0	0	S
4095		C	M	Y	N	0505	1105	S	24	0	157	0	0	125	32	0	0	S
1	UNALLOCATED TRACTS	C	N						0	0	357	0	21	189	147	0	0	S
4206		U	N	U					0	0	80	0	0	0	80	0	0	S
4020		M		PT		0601	0930	S	0	0	1498	234	0	858	149	119	372	S
4030		M		PT				S	0	0	2119	1048	0	1342	494	32	251	S

PHILLIPS RESOURCE AREA

Allot Number	Allotment Name	Lvst Kind	Mgt Cat	Graz. Alloc	Plan Type	Grazing Season		Graz. Method	Public AUMs	Other AUMs	Public Acres	Other Acres	Ecological Status/Condition					Trend	
						From	To						Excel.	Good	Fair	Poor	Unsuit		
5000	Corner	C	C	Y	N	0301	0228	S	142	0	480	0	0	480	0	0	0	0	U
5001	Border	C	I	Y	E	0501	1031	DR	525	0	1848	0	0	1266	582	0	0	0	U
5002	North Woody Island	C	I	Y	E	0501	1015	RR	1553	107	7411	640	0	7411	0	0	0	0	U
5003	West Sunnyslope	C	I	Y	E	0420	1120	DR	277	0	1440	0	0	1360	80	0	0	0	U
5004	Mid-Sunnyslope	C	I	Y	PT	0501	0915	S	181	0	800	0	0	800	0	0	0	0	S
5006	North Sunnyslope	C	I	Y	PT	0427	1130	S	345	0	1758	0	0	1758	0	0	0	0	U
5007	East Sunnyslope	C	I	Y	E	0415	1214	RR	165	145	800	800	0	800	0	0	0	0	S
5008	Sunnyslope	C	I	Y	E	0416	1115	RR	704	591	3290	2720	0	3290	0	0	0	0	S
5009	Upper Whitewater Ck.	C	I	Y	PT	0501	1130	S	1010	330	4680	1745	0	4563	0	117	0	0	S
5010	Fanning Coulee	C	I	Y	PT	0601	1006	S	337	131	1712	776	0	1592	120	0	0	0	S
5011	West Big Coulee	C	I	Y	PT	0501	1130	S	1017	62	4312	320	0	4222	90	0	0	0	S
5012	Big Coulee	C	I	Y	P	0501	1031	S	3414	868	17138	4769	0	14275	2913	0	0	0	S
5013	Divide	C	I	Y	PT	0416	1130	S	1785	198	7706	870	0	7602	104	0	0	0	S
5014	North Pea Lake	C	I	Y	E	0501	1031	S	1486	0	5948	0	0	5875	0	73	0	0	S
5015	Pea Lake	C	I	Y	PT	0415	1030	S	3110	6	13390	25	0	11870	1444	76	0	0	S
5016	Leibel Coulee	C	I	Y	PT	0501	1031	S	471	82	2039	309	0	0	2039	0	0	0	S
5019	Elmer Coulee	C	I	Y	PT	0515	1114	S	303	0	1040	0	0	331	709	0	0	0	S
5021	Orrey Coulee	C	I	Y	PT	0420	1031	S	702	348	2900	1192	0	1354	1546	0	0	0	S
5022	East Plansview	C	I	Y	PT	0415	0715	S	421	22	1966	90	0	1770	186	0	10	0	S
5023	Frenchman Creek	M	I	Y	P	0301	0228	S	1878	1157	22312	6822	0	10758	7016	0	4538	0	S
5024	Upper Snake Creek	C	I	Y	PT	0401	1231	S	1042	1112	7535	5985	0	4532	1889	0	1114	0	S
5025	Middle Frenchman	C	C	Y	N	0301	0228	S	128	0	1090	0	0	690	117	0	283	0	S
5026	Wodtkey Coulee	C	I	Y	P	0415	1031	S	1320	182	10722	1130	0	6396	4326	0	0	0	S
5027	Cottonwood Creek	C	I	Y	PT	0515	1114	S	696	510	6016	2790	0	4038	955	0	1023	0	S
5028	West Cottonwood	C	C	Y	N	0301	0228	S	110	0	575	0	0	334	237	0	4	0	S
5029	Wright Coulee	C	C	Y	N	0301	0228	S	67	0	365	0	0	265	100	0	0	0	S
5030	Dunhan Coulee	C	I	Y	E	0401	1130	RR	910	20	2813	95	0	2528	262	0	23	0	S
5031	Wallis Coulee	C	I	Y	PT	0601	0801	S	232	214	1400	1000	0	1237	163	0	0	0	S
5032	Johns Coulee	C	C	Y	N	0301	0228	S	98	0	400	0	0	400	0	0	0	0	S
5033	Kashaw Coulee	C	I	Y	PT	0501	1005	S	207	0	960	0	0	384	576	0	0	0	S
5034	Plainsview	C	I	Y	E	0501	1015	RR	942	0	4176	0	0	3330	846	0	0	0	U
5035	North Whitewater Lk.	C	I	Y	PT	0506	1125	S	1391	175	6745	800	0	4738	1924	83	0	0	U
5036	West Whitewater Lake	C	I	Y	E	0601	1031	RR	1467	310	7473	1535	0	7473	0	0	0	0	U
5037	Lone Tree Coulee	C	I	Y	E	0501	1031	RR	1531	222	7191	1062	0	6936	254	0	1	0	U
5038	Reservoir	C	I	Y	E	0501	1001	DR	214	28	1039	145	0	610	429	0	0	0	S
5039	Whitewater Creek	C	I	Y	PT	0501	0930	S	1124	259	5453	1295	0	4816	637	0	0	0	S
5040	Wren Coulee	C	C	Y	N	0301	0228	S	210	0	1062	0	0	1048	14	0	0	0	S
5041	Lake Coulee	C	I	Y	PT	0501	1004	S	1078	435	5772	2271	0	5742	30	0	0	0	S
5042	Flat Coulee	C	I	Y	PT	0501	0930	S	481	206	2597	960	0	2568	29	0	0	0	S
5043	Horseshoe Lake	C	I	Y	PT	0420	1201	S	2424	699	11467	3179	0	9457	1990	0	20	0	S
5044	North Horseshoe Lake	C	I	Y	PT	0415	1031	S	385	75	1964	400	0	1964	0	0	0	0	U
5045	All Pronto	C	C	Y	N	0301	0228	S	97	0	640	0	0	488	152	0	0	0	S
5046	North Cowie Coulee	C	C	Y	N	0301	0228	S	112	0	510	0	0	510	0	0	0	0	S
5047	Horseshoe Coulee	C	I	Y	E	0501	0105	DR	1404	799	6526	3576	0	5873	641	0	12	0	U
5048	Countyline	C	C	Y	N	0301	0228	S	9	0	40	0	0	14	26	0	0	0	S
5049	N. Black Coulee	C	C	Y	N	0301	0228	S	27	0	152	0	0	94	34	0	24	0	S
5050	Kegal Coulee	C	C	Y	N	0301	0228	S	37	0	235	0	0	139	74	0	22	0	S
5051	Woody Island	C	I	Y	E	0401	1015	RR	1868	821	12105	8012	0	9788	1763	0	554	0	U

Allot Number	Allotment Name	Lvst Kind	Mgt Cat	Graz. Alloc	Plan Type	Grazing Season		Graz. Method	Public AUMs	Other AUMs	Public Acres	Other Acres	Ecological Status/Condition					Trend	
						From	To						Excel.	Good	Fair	Poor	Unsuit		
5052	Cowie Coulee	C	C	Y	N	0301	0228	S	109	0	455	0	0	455	0	0	0	0	S
5053	Take-Away	C	I	Y	PT	0501	1031	S	509	0	2905	0	0	2854	0	0	51	S	
5055	Martin Lake Coulee	C	C	Y	N	0301	0228	S	50	0	285	0	0	233	49	0	3	S	
5056	Lower Lake Coulee	C	I	Y	PT	0510	0918	S	221	0	1180	0	0	909	271	0	0	S	
5058	North Dibble Coulee	C	C	Y	N	0301	0228	S	131	0	650	0	0	650	0	0	0	S	
5059	Dibble Coulee	C	I	Y	PT	0501	1031	S	451	503	2125	1997	0	1842	283	0	0	S	
5060	South Dibble Coulee	C	C	Y	N	0301	0228	S	9	0	40	0	0	40	0	0	0	S	
5061	Upper Sink Coulee	C	C	Y	N	0301	0228	S	90	0	480	0	0	411	69	0	0	S	
5062	Austin Lake	C	I	Y	PT	0505	1108	S	1851	193	9560	1270	0	7461	2078	0	21	S	
5063	Sink Coulee	C	C	Y	N	0301	0228	S	204	0	1133	0	0	517	616	0	0	S	
5064	Whitewater	C	I	Y	PT	0426	1011	S	256	40	1486	270	0	1486	0	0	0	S	
5065	Eastfork Whitewater	C	I	Y	E	0401	1015	RR	1206	377	6202	2169	0	5599	601	0	2	U	
5066	Provost Coulee	C	I	Y	PT	0501	1018	S	520	67	2655	320	0	2025	625	0	5	S	
5067	Lone Tree	C	I	Y	PT	0501	1210	S	130	9	760	65	0	747	0	0	13	S	
5068	Whitewater Lake		H	N	N				0	0	788	0	0	788	0	0	0	S	
5069	Westfork Stinky	C	I	Y	PT	0501	1009	S	398	15	1705	160	0	1705	0	0	0	S	
5070	Stinky Creek	C	C	Y	N	0301	0228	S	99	0	720	0	0	218	477	0	25	S	
5071	Turkey Track	C	I	Y	PT	0516	1031	S	1182	711	6040	3527	0	5882	0	0	158	S	
5072	Upper E. Fk. Stinky	C	C	Y	N	0301	0228	S	122	0	552	0	0	552	0	0	0	S	
5073	Eklund Coulee	C	H	Y	PT	0501	1031	S	181	320	1915	2061	0	1499	0	0	416	S	
5074	Corral Coulee	C	C	Y	N	0301	0228	S	73	0	320	0	0	0	320	0	0	S	
5075	Two Mile Coulee	C	I	Y	PT	0301	0228	S	303	0	2887	0	0	2343	134	0	410	S	
5076	Pan Handle Coulee	C	C	Y	N	0301	0228	S	142	0	794	0	0	248	514	0	32	S	
5077	Ash Coulee	C	C	Y	N	0301	0228	S	27	0	153	0	0	107	37	0	9	S	
5078	Rattlesnake Coulee	C	C	Y	N	0301	0228	S	60	0	310	0	0	62	248	0	0	S	
5080	Eastfork Stinky Crk.	C	C	Y	N	0301	0228	S	431	0	1960	0	0	1288	640	0	32	S	
5081	Forty	C	C	Y	N	0301	0228	S	10	0	40	0	0	0	40	0	0	S	
5082	Bench	C	C	Y	N	0301	0228	S	15	0	80	0	0	80	0	0	0	S	
5084	Upper Coop Coulee	C	I	Y	E	0515	1015	DR	329	162	1906	960	0	953	953	0	0	S	
5085	Coop Coulee	C	I	Y	E	0401	0531	DR	168	10	896	80	0	896	0	0	0	S	
5086	Lower Coop Coulee	C	I	Y	PT	0415	1130	S	557	35	2786	190	0	2322	464	0	0	S	
5087	Joe Bell Coulee	C	I	Y	E	0501	1031	DR	1352	1185	6802	5877	0	6329	473	0	0	S	
5088	Lower Lush Coulee	C	C	Y	N	0501	1031	S	128	0	592	0	0	506	86	0	0	S	
5089	Martins Coulee	C	I	Y	E	0501	1031	DR	2945	1916	14916	10144	0	11706	3037	0	173	U	
5090	Lush Coulee	C	C	Y	N	0301	0228	S	59	0	240	0	0	240	0	0	0	S	
5091	Belle Coulee	C	C	Y	N	0301	0228	S	186	0	1020	0	0	996	0	0	24	S	
5092	Mount Coulee	C	C	Y	N	0301	0228	S	37	0	215	0	0	213	0	0	2	S	
5093	Lambing Coulee	C	I	Y	E	0515	1210	DR	2054	443	10000	2176	0	5446	4545	0	9	U	
5094	Upper Cottonwood	C	I	Y	E	0501	1115	S	2436	793	14820	4905	0	13141	1679	0	0	S	
5095	Joiner Coulee	C	I	Y	P	0412	1016	S	849	234	5151	1355	0	2521	2423	0	207	U	
5096	Lamere Coulee	C	I	Y	E	0415	1130	RR	2021	196	15133	1492	0	9277	4675	0	1181	S	
5097	Black Coulee	C	H	Y	PT	0425	1125	S	750	324	3215	1284	0	2452	685	0	78	S	
5100	Mud Creek	C	I	Y	PT	0501	0930	S	340	37	1775	160	0	622	1153	0	0	S	
5101	Upper Mud Creek	C	C	Y	N	0301	0228	S	197	0	880	0	0	763	117	0	0	S	
5102	Upper Northfork	C	C	Y	N	0301	0228	S	19	0	120	0	0	40	80	0	0	S	
5103	South Joiner Coulee	M	C	Y	N	0301	0228	S	186	0	880	0	0	547	325	0	8	S	
5104	Pierson Coulee	C	H	Y	PT	0501	1031	S	123	85	730	380	0	569	161	0	0	U	
5105	Upper Pierson Coulee	C	C	Y	N	0301	0228	S	18	0	80	0	0	0	80	0	0	U	
5106	Shed Coulee	C	I	Y	N	0301	0228	S	295	0	1662	0	0	1370	273	0	19	S	

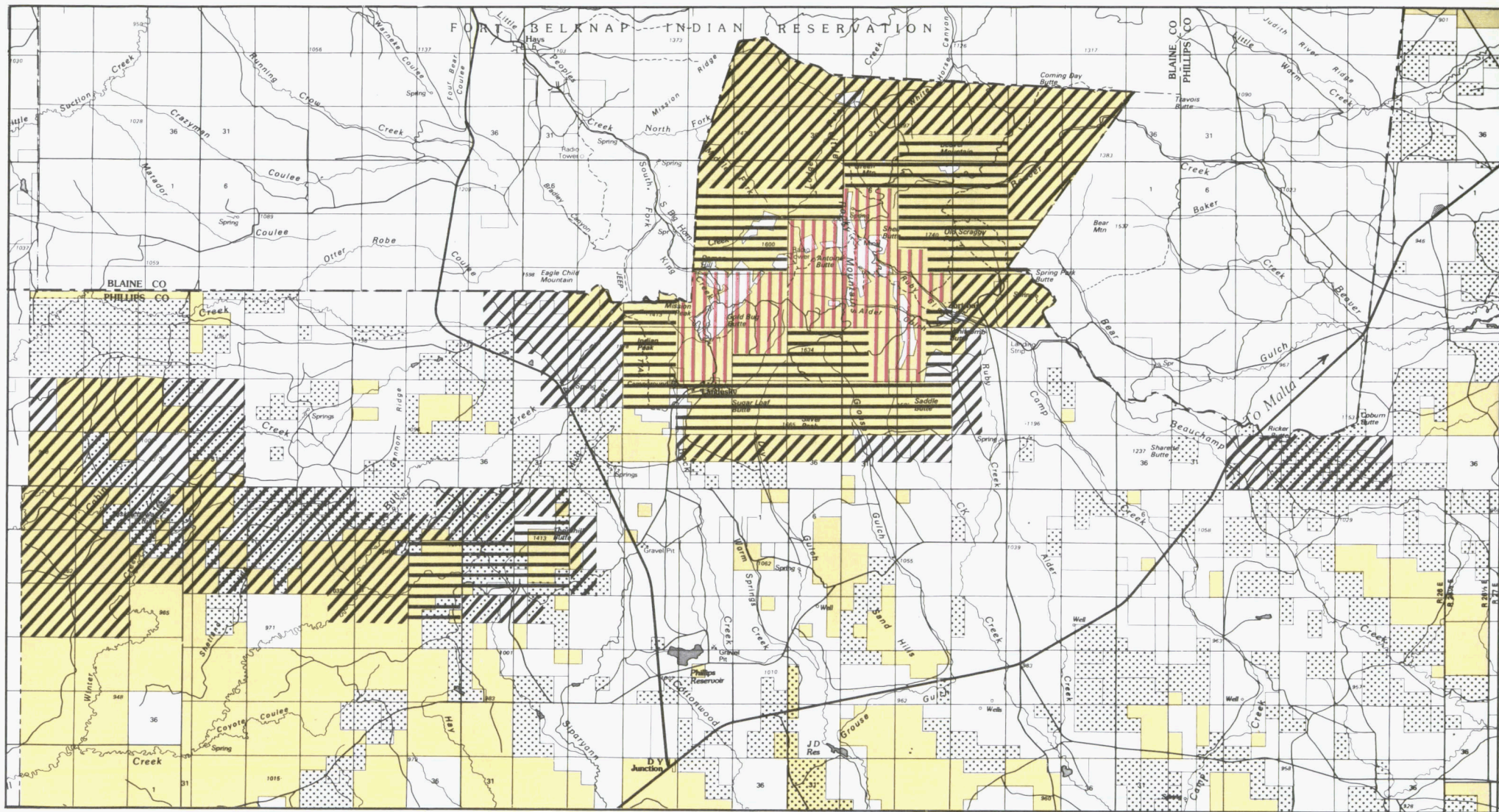
Allot Number	Allotment Name	Lvst Kind	Mgt Cat	Graz. Alloc	Plan Type	Grazing Season		Graz. Method	Public AUMs	Other AUMs	Public Acres	Other Acres	Ecological Status/Condition				Trend	
						From	To						Excel.	Good	Fair	Poor		Unsuit
5107	Garland Creek	C	I	Y	PT	1101	0430	S	799	129	4560	780	0	4181	146	0	233	S
5108	Davenport Coulee	C	C	Y	N	0301	0228	S	158	0	970	0	0	849	84	0	37	S
5109	West Garland Creek	C	I	Y	E	0501	1031	DR	939	759	4996	3460	0	4186	465	231	114	S
5110	East Garland Creek	C	I	Y	E	0501	1031	DR	1014	983	6122	6280	0	5606	172	48	296	S
5111	Little Cottonwood Ck	C	M	Y	E	0501	1031	DR	850	1510	4415	8473	0	2975	1141	0	299	S
5112	Bughouse Coulee	C	C	Y	N	0501	1031	S	309	0	1665	0	0	1497	80	57	31	S
5114	River Unit	C	C	Y	N	0301	0228	S	31	0	392	0	0	241	82	0	69	S
5115	Big Bend	C	C	Y	E	0401	0531	DR	227	269	1474	1687	0	1023	367	0	84	S
5116	Alkali Coulee	C	I	Y	PT	0515	1115	S	772	329	3447	1440	0	2764	668	0	15	D
5118	Lower Stinky Creek	C	C	Y	N	0301	0228	S	80	0	447	0	0	191	244	0	12	S
5119	West Stinky Creek	C	C	Y	N	0301	0228	S	19	0	145	0	0	96	42	0	7	S
5120	East Stinky Creek	C	C	Y	N	0301	0228	S	6	0	40	0	0	40	0	0	0	S
5121	Little Coulee	C	C	Y	N	0301	0228	S	17	0	80	0	0	80	0	0	0	S
5122	Rock Coulee	C	C	Y	N	0301	0228	S	98	0	928	0	0	259	614	0	55	S
5123	Brush Coulee	C	C	Y	N	0301	0228	S	53	0	360	0	0	331	28	0	1	S
5124	Burnt Shed Coulee	C	C	Y	N	0301	0228	S	45	0	200	0	0	36	160	0	4	S
5125	McChesney Reservoir	C	C	Y	N	0301	0228	S	6	0	80	0	0	80	0	0	0	S
5126	Lemke Coulee	C	C	Y	N	0301	0228	S	23	0	114	0	0	89	25	0	0	S
5127	Dry Stinky Coulee	C	C	Y	N	0301	0228	S	51	0	320	0	0	107	213	0	0	S
5128	East Lower Stinky Cr	C	C	Y	N	0301	0228	S	8	0	45	0	0	13	32	0	0	S
5129	Lower Whitewater	C	C	Y	N	0301	0228	S	57	0	320	0	0	320	0	0	0	S
5130	Horse Camp Coulee	C	I	Y	E	0415	0913	DR	813	349	3056	3102	0	2896	160	0	0	S
5131	Basin Coulee	C	I	Y	PT	0407	1014	S	731	196	2542	783	0	2496	46	0	0	U
5132	Assiniboine East	C	I	Y	PT	0630	1011	S	200	63	940	320	0	940	0	0	0	S
5133	Assiniboine Creek	C	I	Y	E	0415	1031	DR	828	0	4028	0	0	3379	626	0	23	S
5134	Assiniboine West	C	C	Y	N	0301	0228	S	61	0	260	0	0	260	0	0	0	U
5135	Southfork Garland	C	C	Y	N	0301	0228	S	81	0	371	0	0	371	0	0	0	S
5137	Goertz Coulee	C	C	Y	N	0301	0228	S	9	0	40	0	0	40	0	0	0	S
5138	East Sheep Coulee	C	C	Y	N	0301	0228	S	20	0	80	0	0	77	3	0	0	S
5139	Sheep Coulee	C	C	Y	N	0301	0228	S	145	0	640	0	0	538	102	0	0	S
5140	Williams Coulee	C	C	Y	N	0301	0228	S	42	0	200	0	0	120	80	0	0	S
5142	Wetland		C	N	N				0	0	80	0	0	80	0	0	0	S
5144	Dodson Creek	C	I	Y	PT	0714	1110	S	964	339	4945	1660	0	4920	3	0	22	S
5145	East Eureka Creek	C	C	Y	N	0301	0228	S	33	0	310	0	0	210	100	0	0	S
5146	Vaughn Coulee	C	C	Y	N	0301	0228	S	42	0	280	0	0	280	0	0	0	S
5147	Lower Vaughn Coulee	C	C	Y	N	0301	0228	S	8	0	80	0	0	80	0	0	0	S
5148	Upper Spring Creek	C	C	Y	N	0301	0228	S	51	0	240	0	0	0	240	0	0	S
5149	Spring Creek	C	C	Y	N	0301	0228	S	118	0	763	0	0	598	143	0	22	S
5150	Upper Exeter Creek	C	C	Y	N	0301	0228	S	102	0	500	0	0	39	461	0	0	S
5151	Dry Coulee	C	C	Y	N	0301	0228	S	30	0	120	0	0	120	0	0	0	S
5152	Exeter Creek	C	I	Y	PT	0515	1031	S	284	96	1323	441	0	1115	208	0	0	S
5153	Wilson Coulee	C	I	Y	PT	0501	1113	S	820	140	3735	628	0	2959	771	0	5	S
5154	Dry Fork	C	I	Y	PT	0401	1215	S	430	103	2444	430	0	2290	84	0	70	S
5155	Spring Creek	C	I	Y	PT	0415	0808	S	416	266	2295	1535	0	1639	598	0	58	S
5156	Lower Assiniboine	C	C	Y	N	0301	0228	S	115	0	565	0	0	449	115	0	1	S
5157	Lower Rattlesnake Co	C	C	Y	N	0301	0228	S	12	0	80	0	0	78	0	0	2	S
5158	Loring	C	C	Y	N	0301	0228	S	56	0	284	0	0	128	150	0	6	S
5300	South Big Bend	C	I	Y	E	0516	1031	DR	896	226	3736	788	0	3451	285	0	0	S
5301	Dry Lake	C	C	Y	N	0501	1031	S	257	0	1205	0	0	1171	0	0	34	S

Allot Number	Allotment Name	Lvst Kind	Mgt Cat	Graz. Plan Alloc Type	Grazing Season		Graz. Method	Public AUMs	Other AUMs	Public Acres	Other Acres	Ecological Status/Condition					Trend	
					From	To						Excel.	Good	Fair	Poor	Unsuit		
5303	Canty Coulee	C	C	Y	N	0301	0228	S	207	0	1036	0	0	865	138	0	33	S
5304	West Hewitt Lake	C	I	Y	PT	0501	1115	S	643	639	2735	2594	0	2292	425	0	18	S
5305	Lone Tree Sag	C	C	Y	N	0301	0228	S	55	0	260	0	0	134	120	0	6	S
5307	Big Bend	C	I	Y	E	1101	0228	DR	540	261	2223	1243	0	2223	0	0	0	S
5308	McNeil Slough	C	C	Y	N	0301	0228	S	54	0	216	0	0	0	216	0	0	S
5309	South Hewitt Lake	C	I	Y	PT	0301	0228	S	203	0	802	0	0	753	40	0	9	S
5310	North Nelson	C	C	Y	N	0301	0228	S	34	0	195	0	0	0	195	0	0	S
5393	Nelson Reservoir	C	C	Y	N	0301	0228	S	10	0	78	0	0	78	0	0	0	S
5312	Saco Dump	C	C	Y	N	0301	0228	S	262	0	1265	0	0	821	395	0	49	S
5313	West Saco Dump	C	C	Y	N	0301	0228	S	21	0	110	0	0	66	37	0	7	S
5314	North First Creek	C	C	Y	N	0301	0228	S	37	0	265	0	0	162	85	0	18	S
5315	Saco	C	C	Y	N	0301	0228	S	421	0	2082	0	0	1792	177	0	113	S
5316	Saco Hills	C	M	Y	PT	0515	1114	S	876	432	5473	2355	0	4031	1095	0	347	S
5317	North Cactus Flat	C	C	Y	N	0301	0228	S	14	0	180	0	0	0	180	0	0	S
5318	Cactus Flats	C	C	Y	N	0301	0228	S	8	0	130	0	0	0	130	0	0	S
5319	Upper Second Creek	C	M	Y	PT	0601	0911	S	611	583	2494	2301	0	2159	253	0	82	S
5320	Thomas Coulee	C	M	Y	PT	0501	1031	S	197	64	1539	436	0	1300	0	0	239	S
5321	Northwest Bowdoin	C	C	N	N				0	0	40	0	0	40	0	0	0	S
5322	So. Nelson Reservoir	C	C	Y	N	0301	0228	S	92	0	375	0	0	0	375	0	0	S
5323	Upper Delaney Coulee	C	C	Y	N	0301	0228	S	74	0	360	0	0	360	0	0	0	S
5324	North Bowdoin	C	I	Y	PT	0501	0930	S	413	159	1867	630	0	1867	0	0	0	S
5325	Horse Camp Coulee	C	I	Y	E	0301	0228	S	244	162	1282	802	0	1282	0	0	0	U
5326	Delaney Coulee	C	C	Y	N	0301	0228	S	9	0	58	0	0	58	0	0	0	S
5327	North Rocky Point	C	C	Y	N	0301	0228	S	17	0	80	0	0	80	0	0	0	S
5328	Rocky Point	C	C	Y	N	0301	0228	S	372	0	1760	0	0	1003	756	0	1	S
5329	Cow Creek	C	I	Y	E	0415	1115	S	234	33	644	160	0	322	322	0	0	S
5330	Davison Coulee	C	C	Y	N	0301	0228	S	93	0	401	0	0	155	246	0	0	S
5331	Gravel Coulee	C	C	Y	N	0301	0228	S	85	0	440	0	0	0	440	0	0	S
5332	Dodson Canal	C	C	Y	N	0301	0228	S	112	0	700	0	0	0	700	0	0	S
5333	South Dodson Canal	C	C	Y	N	0301	0228	S	8	0	40	0	0	0	28	12	0	S
5334	Lower Alkali Creek	C	C	Y	N	0301	0228	S	16	0	80	0	0	80	0	0	0	S
5335	Turnell Coulee	C	C	Y	N	0301	0228	S	46	0	230	0	0	103	127	0	0	S
5336	South Bowdoin	C	C	Y	N	0301	0228	S	136	0	760	0	0	661	58	0	41	S
5337	North Clanton	C	C	Y	N	0301	0228	S	180	0	810	0	0	810	0	0	0	S
5339	Crooks Coulee	C	M	Y	E	0501	1031	S	458	331	3120	2110	34	2713	174	0	199	S
5342	Upper Crooks Coulee	C	C	Y	N	0301	0228	S	133	0	575	0	0	526	0	0	49	S
5343	Third Creek	C	I	Y	N	0301	0228	S	422	0	1750	0	0	1669	17	0	64	S
5344	Fourth Creek	C	I	Y	E	0516	1031	RR	904	20	4723	819	608	3987	0	0	128	U
5345	Second Creek	C	C	Y	E	0516	1115	DR	416	369	1995	2049	0	1614	214	0	167	S
5346	North Third Creek	C	C	Y	N	0301	0228	S	66	0	400	0	0	362	0	0	38	S
5347	West Coulee	C	C	Y	N	0301	0228	S	17	0	120	0	0	110	0	0	10	S
5348	Larb Creek	C	I	Y		0501	1031	DR	34	98	160	340	0	0	160	0	0	U
5349	Upper Moss Coulee	C	I	Y	PT	0501	1031	S	629	137	3590	755	282	3038	0	0	270	S
5351	Riegal Coulee	C	M	Y	PT	0412	1206	S	820	1343	3565	5244	0	3344	192	0	29	S
5352	Moss Coulee	C	I	Y	PT	0605	1001	S	218	0	961	0	0	891	70	0	0	S
5353	Lower Moss Coulee	C	M	Y	PT	0701	0930	S	439	0	2892	0	765	1942	180	0	5	S
5354	Guston Coulee	C	I	Y	E	0501	0930	DR	1421	188	9140	1281	0	4753	4387	0	0	S
5355	Alkali Lake Coulee	C	I	Y	PT	0601	0915	S	141	0	963	0	0	963	0	0	0	S
5356	Lenoir Coulee	C	C	Y	N	0301	0228	S	63	0	320	0	0	320	0	0	0	S

Allot Number	Allotment Name	Lvst Kind	Mgt Cat	Graz. Alloc	Plan Type	Grazing Season		Graz. Method	Public AUMs	Other AUMs	Public Acres	Other Acres	Ecological Status/Condition					Trend
						From	To						Excel.	Good	Fair	Poor	Unsuit	
5357	Rock Corral	C	C	Y	N	0301	0228	S	274	0	1527	0	0	902	576	41	8	S
5358	North Seven Mile	C	C	Y	N	0301	0228	S	7	0	40	0	0	40	0	0	0	S
5359	Upper Tetrault Coule.	C	C	Y	N	0301	0228	S	139	0	640	0	0	599	41	0	0	S
5360	South Lenoir Coule.	C	C	Y	N	0301	0228	S	34	0	160	0	0	44	93	0	23	S
5361	Tetrault Coulee		C	N	N				0	0	30	0	0	30	0	0	0	S
5362	Upper Gonzales Coule.	C	C	Y	N	0301	0228	S	47	0	200	0	0	98	102	0	0	S
5363	Black Coulee	C	I	Y	E	0416	1015	RR	439	84	1600	345	0	1600	0	0	0	S
5364	Middle Black Coulee	C	C	Y	N	0301	0228	S	7	0	40	0	0	40	0	0	0	S
5365	Junction	C	C	Y	N	0301	0228	S	78	0	320	0	0	160	160	0	0	S
5366	Waters Holding Past.	C	C	Y	N	0416	0515	S	115	0	480	0	0	480	0	0	0	U
5367	East Alkali	C	C	Y	N	0301	0228	S	247	0	1240	0	0	935	305	0	0	S
5368	Beavers	C	C	Y	E	0501	1031	RR	255	75	880	324	0	741	139	0	0	S
5369	South Alkali Creek	C	I	Y	PT	0501	1031	S	517	231	2920	1087	0	2398	496	0	26	S
5370	West Bench	C	C	Y	N	0301	0228	S	29	0	165	0	0	138	21	0	6	S
5371	East Bench	C	C	Y	N	0301	0228	S	68	0	320	0	0	320	0	0	0	S
5372	Alkali Creek	C	I	Y	PT	0401	1130	S	960	236	4948	1193	0	1134	3755	0	59	S
5373	Lower Half-Way Coule.	C	C	Y	N	0301	0228	S	114	0	640	0	0	129	511	0	0	S
5374	Half Way Coulee	C	I	Y	E	0415	1114	RR	532	25	2190	160	0	2190	0	0	0	U
5376	Nice Pond	C	C	Y	N	0301	0228	S	145	0	705	0	0	63	642	0	0	S
5378	Upper Wind Coulee	C	C	Y	N	0301	0228	S	105	0	640	0	0	0	640	0	0	S
5379	Wind Coulee	C	C	Y	N	0301	0228	S	54	0	200	0	0	50	150	0	0	S
5380	Upper Cow Creek	C	C	Y	N	0301	0228	S	19	0	160	0	0	92	68	0	0	S
5383	Upper West Alkali	C	C	Y	N	0301	0228	S	38	0	340	0	0	0	340	0	0	S
5384	North Wild Horse	C	C	Y	N	0301	0228	S	143	0	1142	0	0	39	911	155	37	S
5385	South Wild Horse	C	I	Y	PT	0415	1015	S	116	219	822	1215	0	64	731	0	27	S
5386	Tressler Coulee	C	I	Y	PT	0301	0228	S	647	24	4154	150	0	2492	1662	0	0	S
5387	West Alkali Creek	C	I	Y	E	0501	1015	DR	1841	2102	9871	10808	0	5658	3980	0	233	S
5388	Rudolph Coulee	C	I	Y	E	0501	1031	RR	2106	582	6947	1983	640	4575	1732	0	0	U
5389	Upper Alkali Creek	C	I	Y	PT	0501	1031	S	220	37	960	160	0	960	0	0	0	S
5390	Upper Overflow Coule.	C	I	Y	PT	0501	0930	S	478	421	2682	2076	0	228	2454	0	0	S
5391	N. Overflow Coulee	C	C	Y	N	0301	0228	S	137	0	640	0	0	0	640	0	0	S
5392	Bennett Lake	C	C	Y	N	0301	0228	S	139	0	440	0	0	440	0	0	0	S
5398	North DHS Creek	C	C	Y	N	0301	0228	S	43	0	260	0	0	30	111	119	0	S
5399	Southfork Cottonwood	C	I	Y	PT	0415	0930	S	240	64	1367	354	0	0	1366	0	1	D
5400	Northfork Cottonwood	C	I	Y	PT	0301	0228	S	155	221	970	1244	0	970	0	0	0	U
5401	Seven Mile Coulee	C	C	Y	N	0301	0228	S	128	0	640	0	0	0	618	0	22	D
5402	Lower Seven Mile	C	I	Y	PT	0701	0930	S	352	0	2210	0	0	2104	103	0	3	U
5404	Cottonwood Creek	C	C	Y	N	0301	0228	S	76	0	415	0	0	349	66	0	0	S
5405	Lower Cottonwood Crk	C	I	Y	PT	0515	1207	S	1156	620	6991	3829	36	6653	184	0	118	S
5406	Lower Albert Coulee	C	I	Y	E	0501	1031	DR	1121	1327	5518	3778	0	2722	2716	0	80	U
5407	Albert Coulee	C	I	Y	E	0501	1031	RR	860	350	3000	1280	0	2340	660	0	0	S
5408	Trueblood Coulee	C	I	Y	PT	0415	1031	S	2015	457	8456	2073	0	5448	2956	0	52	S
5409	Lower D.H.S. Creek	C	C	Y	N	0301	0228	S	108	0	623	0	0	79	544	0	0	D
5410	D.H.S. Creek	C	C	Y	N	0301	0228	S	135	0	721	0	0	0	721	0	0	D
5411	Beaver Creek	C	I	Y	PT	0601	1130	S	614	200	4781	1841	0	4147	400	0	234	S
5412	Shed Coulee	C	M	Y	N	0301	0228	S	60	0	735	0	0	564	0	0	171	U
5413	Armstrong Coulee	C	I	Y	PT	0501	0831	S	476	0	2847	0	0	2847	0	0	0	U
5414	Smith Coulee	C	I	Y	PT	0501	1031	S	258	187	2187	1484	0	1959	75	0	153	S
5415	Overflow Coulee	C	I	Y	PT	0501	1031	S	1204	1552	7791	9612	0	3310	3844	581	56	S

Allot Number	Allotment Name	Lvst Kind	Mgt Cat	Graz. Plan Alloc	Plan Type	Grazing Season		Graz. Method	Public AUMs	Other AUMs	Public Acres	Other Acres	Ecological Status/Condition					Trend
						From	To						Excel.	Good	Fair	Poor	Unsuit	
5416	Sanford Coulee	C	I	Y	P	0501	1130	S	1748	1309	11925	8087	0	7134	4121	0	670	S
5417	Whiterock Coulee	C	I	Y	E	0501	1031	RR	2056	748	16787	6325	0	9712	5510	3	1562	S
5418	Wildhorse	C	C	Y	N	0301	0228	S	147	0	956	0	0	0	951	0	5	S
5419	North Cabbage Coulee	C	C	Y	N	0301	0228	S	107	0	650	0	0	645	0	0	5	S
5420	Big Warm Spring Creek	C	C	Y	N	0301	0228	S	179	0	1154	0	0	865	234	0	55	S
5421	Cabbage Coulee	C	C	Y	N	0301	0228	S	179	0	1120	0	0	1026	80	0	14	S
5422	Spring Coulee	C	C	Y	N	0301	0228	S	68	0	388	0	0	140	240	0	8	S
5423	South Spring Coulee	C	C	Y	N	0301	0228	S	90	0	522	0	0	139	383	0	0	D
5424	Little Warm Spr. Cr.	C	I	Y	P	0401	1130	S	2066	671	11967	3399	0	7944	3692	167	164	S
5425	Upper White Rock	C	C	Y	N	0301	0228	S	65	0	479	0	0	2	431	0	46	S
5426	Alkali Coulee	C	I	Y	PT	0501	1130	S	872	241	4523	1305	0	4234	284	0	5	S
5427	North Flat Creek	C	I	Y	E	0501	1031	RR	1815	1156	15594	8314	0	9476	5201	0	917	S
5428	Rheumatism Coulee	C	I	Y	E	0501	1130	RR	511	0	3948	320	0	635	2576	628	109	S
5429	Spring Creek	C	I	Y	E	0501	1031	DR	2503	1019	14203	5450	0	13919	284	0	0	S
5430	Tallow Creek	C	C	Y	N	0301	0228	S	115	0	810	0	0	0	810	0	0	D
5431	West Larb Creek	C	I	Y		0601	1031	DR	283	326	1735	1880	0	260	1475	0	0	S
5432	Upper Black Coulee	C	I	Y	E	0501	1130	RR	751	30	5810	160	0	5716	94	0	0	S
5433	Lone Tree Creek	C	M	Y		0501	1031	DR	621	87	5093	675	0	2903	2190	0	0	S
5434	Shotgun Coulee	C	I	Y	P	0501	1231	S	2195	319	17937	2018	575	9643	5768	1951	0	U
5435	Buckley Lake	C	C	Y	N	0301	0228	S	114	0	694	0	0	0	694	0	0	S
5436	Lone Horse Coulee	C	I	Y	PT	0401	1130	S	765	88	7083	1080	0	4428	1346	0	1309	S
5437	Sage Creek	C	I	Y	E	0501	1031	RR	329	345	3093	1592	0	1917	1114	62	0	S
5438	North Thomas Coulee	C	M	Y	PT	0501	1031	S	137	96	1050	723	0	0	1050	0	0	S
5439	Flat Creek	C	I	Y	E	0501	1115	RR	1243	275	13075	3070	0	6535	5456	125	959	S
5440	West Flat Creek	C	I	Y	E	0501	1031	RR	709	30	9115	390	1192	5833	1164	0	926	U
5441	Lower Alkali Coulee	C	I	Y	E	0501	1031	RR	245	56	1216	320	0	1216	0	0	0	S
5442	Mickey Reservoir	C	I	Y	PT	0501	1130	S	602	0	3009	0	0	2901	68	0	40	S
5443	First Creek Hall	C	I	Y	E	0501	1118	RR	884	265	4228	1202	0	3440	785	0	3	S
5444	Scott Coulee	C	I	Y	PT	0501	1130	S	533	399	2679	1825	0	2679	0	0	0	S
5445	Upper First Creek	C	I	Y	E	0501	1031	RR	723	140	4179	821	0	4179	0	0	0	S
5446	Parrot Coulee	C	I	Y	PT	0605	1005	S	478	40	2693	266	0	2041	557	45	50	S
5447	Garey Coulee	C	I	Y	PT	0501	1130	S	561	0	3020	0	0	3020	0	0	0	S
5448	Garey Coulee	C	C	Y	N	0301	0228	S	133	0	800	0	0	800	0	0	0	S
5450	First Creek School	C	I	Y	E	0415	1115	DR	217	75	1120	520	0	1120	0	0	0	S
5451	Upper Long Coulee	C	I	Y	E	0415	1031	DR	375	0	1789	0	0	1789	0	0	0	S
5452	Long Coulee	C	I	Y	E	0401	1130	RR	1518	760	8504	4147	765	5443	1701	595	0	U
5453	Stratton Coulee	C	I	Y	E	0401	1130	RR	1194	18	8105	90	764	5278	1865	198	0	S
5454	Dog Creek	C	I	Y	E	0415	0614	DR	306	80	2049	500	0	240	1716	82	11	D
5455	Lower Dog Creek	C	I	Y	E	0501	1130	DR	500	181	3115	4990	0	390	2725	0	0	S
5456	Lonetree Coulee	C	I	Y	PT	0301	0228	S	103	0	1080	0	0	0	1080	0	0	S
5457	Upper Dog Creek	C	I	Y	E	0401	1114	DR	554	250	3491	1775	0	200	2420	871	0	S
5458	Coal Mine Coulee	C	M	Y	E	0401	1130	DR	585	4	3496	25	0	3331	165	0	0	S
5459	Plum Creek	C	C	Y	N	0301	0228	S	87	0	482	0	0	0	482	0	0	S
5460	Horse Pasture Coulee	C	I	Y	PT	0515	1215	S	489	221	4786	1635	0	4100	180	0	506	S
5461	South Armstrong Coulee	C	C	Y	N	0301	0228	S	91	0	690	0	0	600	90	0	0	S
5463	Lower Tallow Creek	C	C	Y	N	0301	0228	S	71	0	414	0	0	0	414	0	0	U
5464	West Albert Coulee	C	I	Y	E	0415	1031	S	948	296	4501	1532	0	4168	333	0	0	S
5465	Upper Tressler Coulee	C	C	Y	N	0301	0228	S	57	0	320	0	0	0	320	0	0	S
5600	Parrot Lake	M	I	Y	PT	0301	0228	S	719	0	3079	0	0	1277	1712	0	90	S

Allot Number	Allotment Name	Lvst Kind	Mgt Cat	Graz. Alloc	Plan Type	Grazing Season		Graz. Method	Public AUMs	Other AUMs	Public Acres	Other Acres	Ecological Status/Condition					Trend	
						From	To						Excel.	Good	Fair	Poor	Unsuit		
5601	Best Coulee	M	I	Y	PT	0401	1130	S	532	0	2735	0	0	1744	991	0	0	0	S
5602	Dry Gulch	C	C	Y	N	0516	0916	S	142	0	0	0	0	0	0	0	0	0	S
5603	Montana Gulch	C	M	Y	N	0301	0228	S	59	0	0	0	0	0	0	0	0	0	S
5604	Upper Bull Creek	C	C	Y	N	0301	0228	S	36	0	360	0	0	0	360	0	0	0	S
5605	Upper Cabin Creek	C	C	Y	N	0301	0228	S	48	0	160	0	0	160	0	0	0	0	S
5606	Squaw Creek	C	C	Y	N	0301	0228	S	45	0	255	0	0	0	255	0	0	0	S
5607	North Cabin Creek	C	M	Y	P	0516	0915	S	243	267	1111	1256	0	1111	0	0	0	0	S
5608	Lower Squaw Creek	M	C	Y	N	0301	0228	S	43	0	177	0	0	0	177	0	0	0	D
5609	Cabin Creek	C	M	Y	E	0501	1031	DR	762	592	6734	4002	0	6619	115	0	0	0	S
5610	Antelope Creek	C	I	Y	P	0501	1231	S	4701	653	45010	5589	0	32338	12467	205	0	0	S
5611	Upper Cyprian Creek	C	M	Y	P	0301	0228	S	646	809	3779	4575	0	2765	1014	0	0	0	S
5612	Square Butte	C	I	Y	P	0501	1031	S	1857	333	15413	2403	0	9478	5935	0	0	0	S
5613	Camp Creek	S	I	Y	E	0626	1215	DR	605	1058	3175	4781	0	725	2450	0	0	0	S
5614	Upper Beauchamp Cr.	C	M	Y	E	0915	0715	DR	593	2280	3051	9945	0	548	2503	0	0	0	S
5615	West Dry Fork	M	I	Y	E	0501	1130	DR	1923	278	14854	1715	0	4383	10471	0	0	0	S
5616	French Coulee	C	C	Y	N	0301	0228	S	7	0	80	0	0	0	80	0	0	0	S
5617	East Dry Fork	C	I	Y	E	0501	1130	DR	2634	23	18672	205	0	9309	8063	0	1300	0	S
5618	Upper Garey Coulee	C	I	Y	E	0408	1120	DR	438	0	1551	0	0	1551	0	0	0	0	S
5619	Lower Garey Coulee	C	C	Y	N	0301	0228	S	63	0	345	0	0	0	345	0	0	0	S
5620	Upper Fourchette Cr.	C	I	Y	P	0601	1015	S	662	527	3296	2267	0	380	2316	0	600	0	S
5621	Upper C.K. Creek	C	C	Y	N	0301	0228	S	31	0	204	0	0	0	204	0	0	0	S
5622	Grouse Creek	C	C	Y	N	0301	0228	S	116	0	608	0	0	0	608	0	0	0	S
5623	Upper Seven Mile Cr.	C	I	Y	E	0401	1231	DR	794	272	3809	1280	0	3809	0	0	0	0	S
5624	East Rock Creek	M	I	Y	E	0601	0430	DR	672	409	4137	2102	0	3946	191	0	0	0	S
5625	Lavelle Creek	C	I	Y	E	0501	1031	RR	1391	124	9726	940	0	5417	4309	0	0	0	S
5626	Rock Creek	C	I	Y	P	0501	1114	S	800	163	5774	1310	107	1704	3963	0	0	0	S
5627	Nichols Coulee	C	I	Y	E	0401	1130	RR	4608	1836	28078	9790	0	21700	6378	0	0	0	S
5628	Beauchamp Creek	C	M	Y	P	0501	1031	S	282	73	2735	640	0	2735	0	0	0	0	S
5629	Coal Mine Coulee	C	C	Y	N	0301	0228	S	53	0	423	0	0	0	423	0	0	0	S
5630	Little Rockies		I	N	N				0	0	27820	0	0	27820	0	0	0	0	S
5631	Cruikshank	C	I	Y	E	0501	1130	DR	989	52	7110	320	0	7110	0	0	0	0	S
5651	North Fourchette	C	I	Y	E	0415	1114	DR	985	32	5360	175	0	5360	0	0	0	0	S
5652	Third Creek	C	I	Y	E	0415	1114	DR	1862	97	10128	640	0	5507	4621	0	0	0	S
5653	Lower Third Creek	C	I	Y	E	0501	1130	DR	700	55	5144	280	0	3179	1965	0	0	0	S
5654	Telegraph Creek	C	I	Y	E	0401	1130	RR	1481	873	11520	0	0	4245	7275	0	0	0	S
5655	Box Elder Creek	C	I	Y	E	0415	1130	DR	1041	652	6488	2678	0	2695	3330	463	0	0	S
5656	Upper Lonetree Coul.	C	C	Y	PT	0301	0228	S	109	0	544	0	0	544	0	0	0	0	S
5657	South Fork Telegraph	C	I	Y	P	0501	1031	S	701	347	3360	1520	0	3360	0	0	0	0	S
5658	North Fork Telegraph	C	M	Y	E	0415	1214	DR	712	972	4427	4860	0	3483	944	0	0	0	S
5660	Larb Hills	C	M	Y	P	0401	1130	S	903	529	6178	2315	0	6178	0	0	0	0	S
5661	Killed Woman	C	I	Y	E	0501	1031	DR	342	394	2057	2422	0	206	1851	0	0	0	S
5662	Fourchette Creek	C	I	Y	E	0501	1130	DR	2815	166	20809	1167	0	15190	5202	417	0	0	S
5663	First Coulee	C	I	Y	E	0501	1031	RR	708	425	4818	2002	674	2409	1638	97	0	0	S
5665	Karsten Coulee	C	I	Y	E	0501	1031	DR	1108	766	5719	5040	0	1018	2193	2508	0	0	S
5667	Burnt Lodge	C	I	Y	P	0416	1015	S	974	639	5285	3172	0	309	4976	0	0	0	S
5670	Misc. Enclosures		C	N					0	0	115	0	0	115	0	0	0	0	S
5302	Cree Crossing		C	N	PT				0	0	101	0	0	101	0	0	0	0	S
5117	Upper Exeter Creek	C	C	Y	N	0301	0228	S	8	0	47	0	0	47	0	0	0	0	S
5160	Lower Wilson Coulee	C	I	Y	PT	0501	1031		387	410	2037	2460	0	1589	448	0	0	0	U



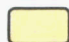




R23E

R24E

R25E

R26E

Map J Little Rocky Mountain Hardrock Mineral Development Potential.

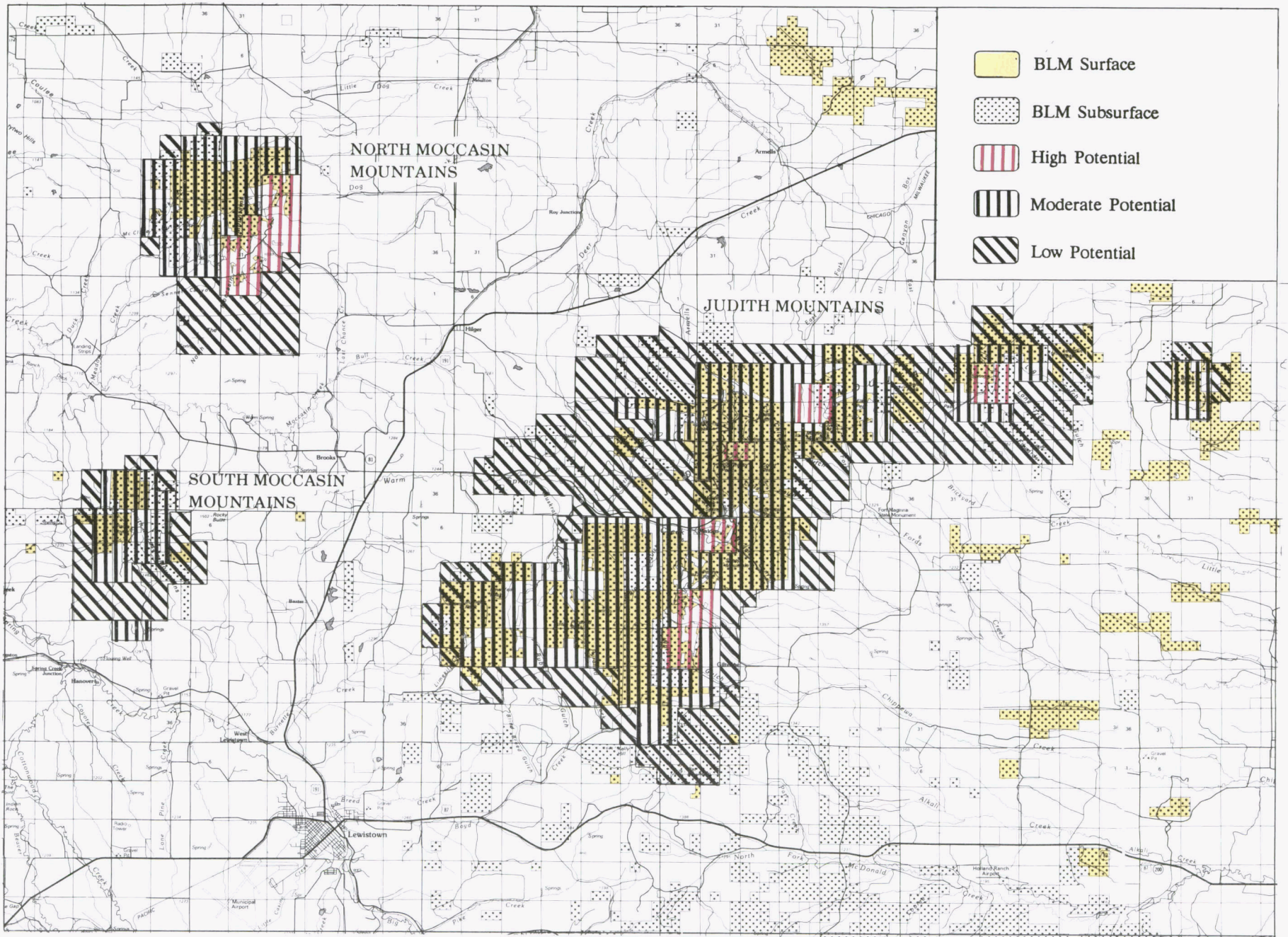
-  BLM Surface
-  Federal Subsurface
-  High Potential
-  Moderate Potential
-  Low Potential



0 1 2 3

Scale In Miles

Map K Judith and Moccasin Mountains Hardrock Mineral Development Potential.



R17E

R18E

R19E

R20E

R21E

R22E

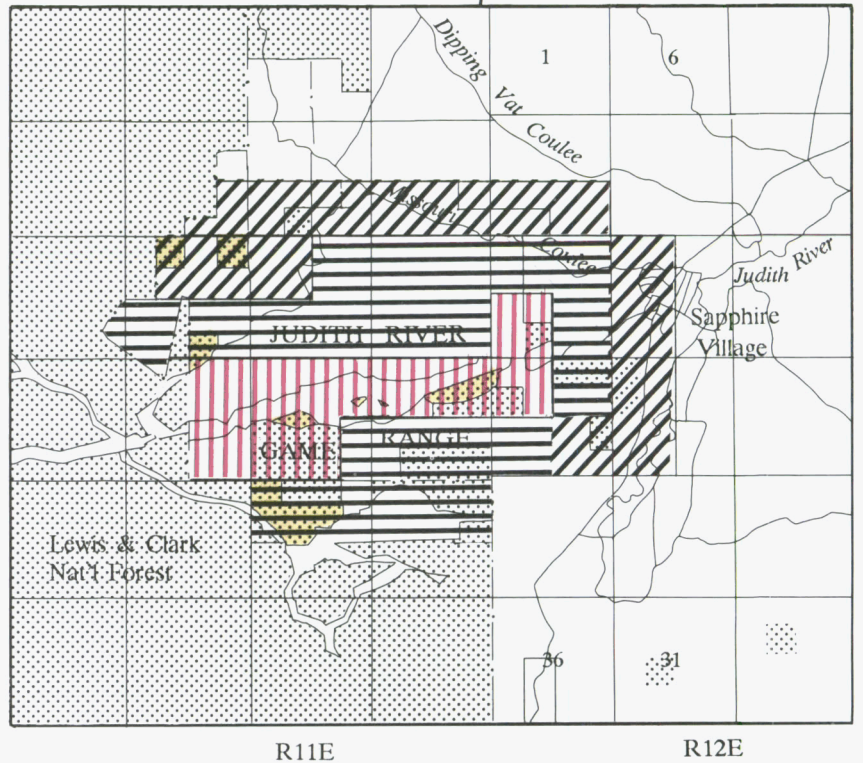
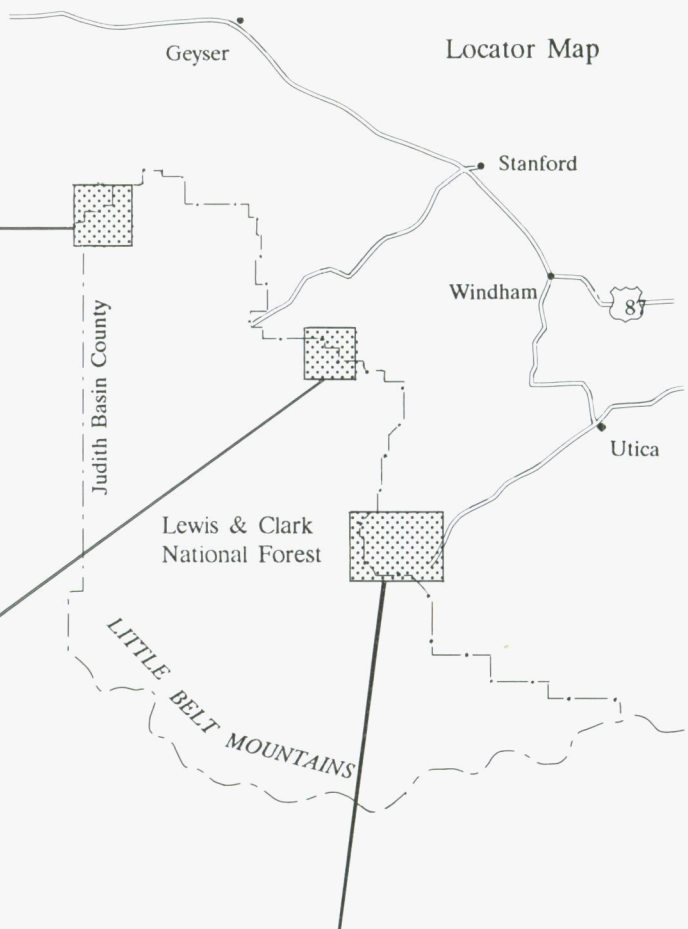
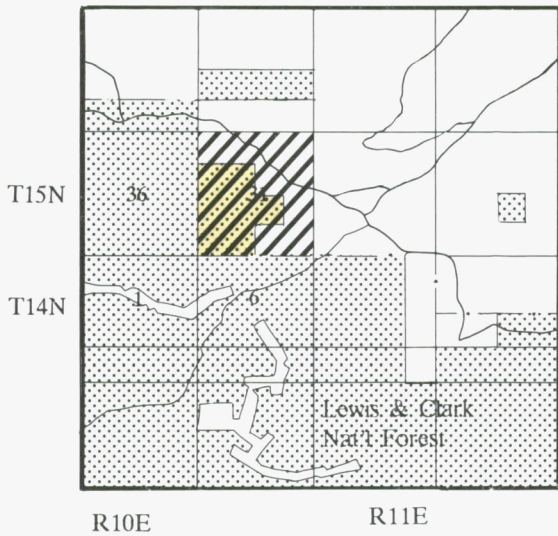
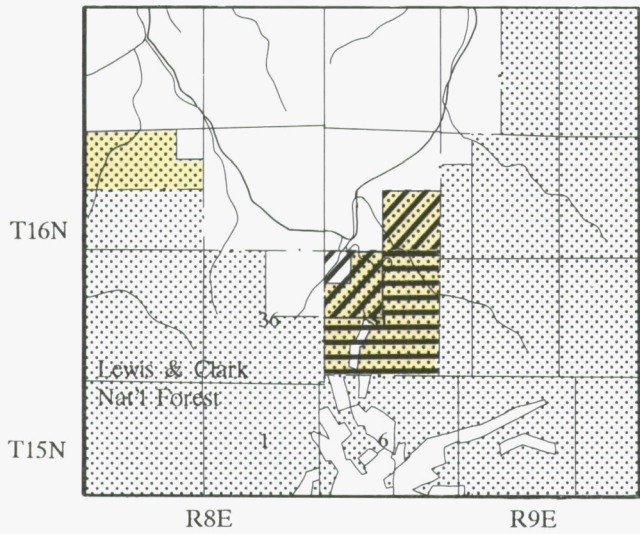
T 18 N

T 17 N

T 16 N

T 15 N

Map L Little Belt Mountains and Yogo Gulch Area Hardrock Mineral Development Potential.



-  BLM Surface
-  Federal Subsurface
-  High Potential
-  Moderate Potential
-  Low Potential

