

# Resource Information

---

## National Vehicle and Fuel Emissions Laboratory



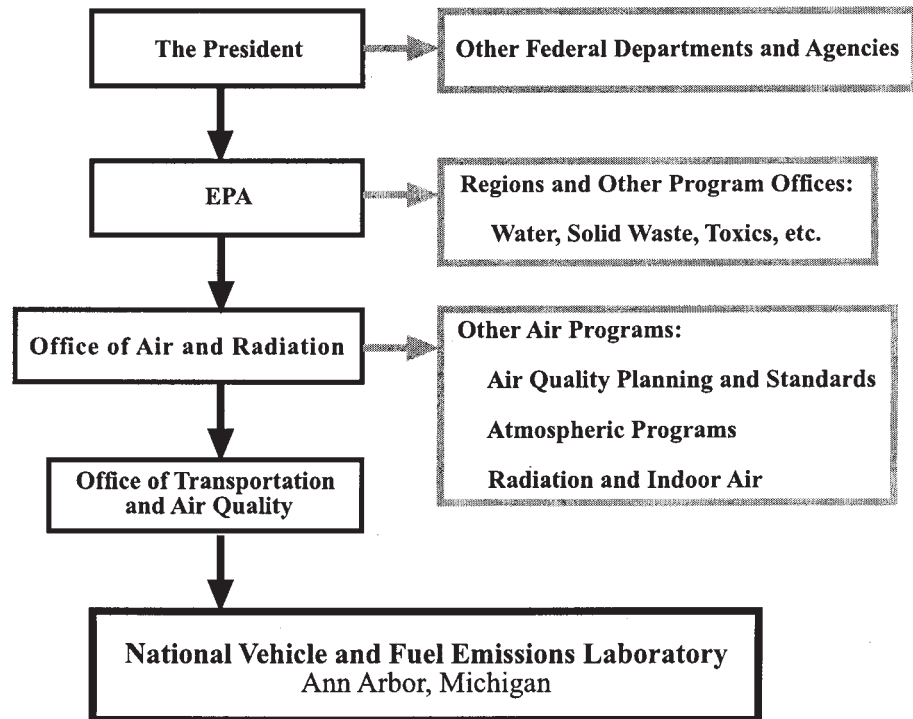
*The U. S. Environmental Protection Agency's (EPA) National Vehicle and Fuel Emissions Laboratory (NVFEL) is part of the Office of Transportation and Air Quality (OTAQ) which is responsible for carrying out laws to control air pollution from motor vehicles, engines, and their fuels. OTAQ's mission is to reconcile the transportation sector with the environment by advancing clean fuels and technology, and promoting more liveable communities. OTAQ is divided between EPA's headquarters in Washington, D.C., and NVFEL in Ann Arbor, Michigan.*

## Overview

The Laboratory's primary responsibilities include:

- Developing national regulatory programs to reduce mobile source related air pollution from light-duty cars and trucks, heavy-duty trucks and busses, and nonroad engines and vehicles.
- Evaluating emission control technology.
- Providing state and local air quality regulators and transportation planners with access to critical information on transportation programs and incentive-based programs.
- Testing vehicles, engines and fuels.
- Determining compliance with federal emissions and fuel economy standards.

Organizationally, the lab functions as part of EPA's Washington, D.C., headquarters.



The laboratory was established in 1971, shortly after the creation of EPA. It is located in Ann Arbor, Michigan near the headquarters of domestic automobile manufacturers to facilitate transfer of test vehicles back and forth.

There are about 400 employees at NVFEL. Staff expertise spans a variety of technical and public policy fields including auto mechanics, engineering, chemistry, economics, natural resources management, and law.

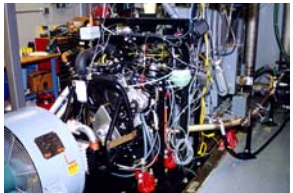
The NVFEL lab provides the Office of Transportation and Air Quality with emissions testing services for motor vehicle, heavy-duty engine, and nonroad engine programs in support of rulemakings, enforcement actions, and procedures development. Testing activities include:



- certifying that vehicles and engines meet federal emissions and fuel economy standards.
- analyzing fuels, fuel additives, and exhaust compounds.
- testing engines for in-use compliance.



In addition, the lab assists in the development of automotive technology to reduce conventional pollutants and greenhouse gas emissions, such as the Clean Automotive Technology Initiative, low NOx diesel engine, and alternative fuel technologies.



### **For More Information**

You can access additional information on OTAQ programs on our Web site at:

[www.epa.gov/otaq](http://www.epa.gov/otaq)

For more information on NVFEL, please contact Terry Newell at:

U.S. Environmental Protection Agency  
Office of Transportation and Air Quality  
2000 Traverwood Dr.  
Ann Arbor, MI 48105  
(734) 214-4333