

# A Framework for Assessing the Public Health Impacts of Risk Management Decisions

*Dan Petersen , PhD., DABT*



# Motivations

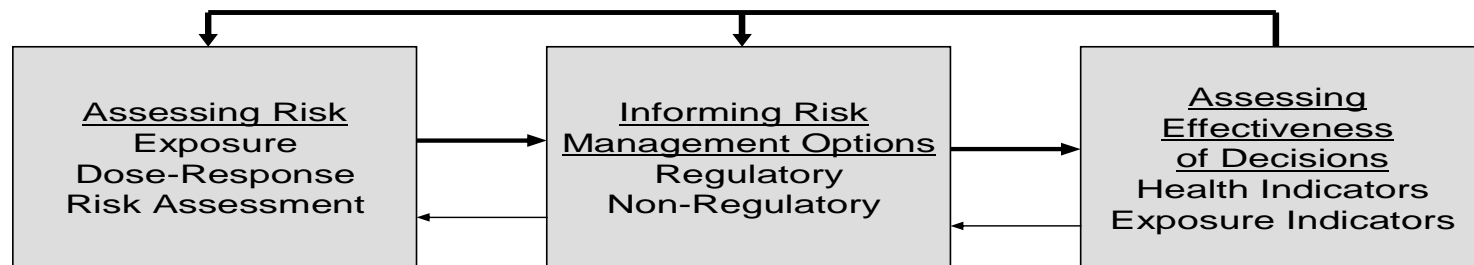
State of the Environment Report – the need to tell a compelling story

GPR- Measures incorporated into Strategic Plans

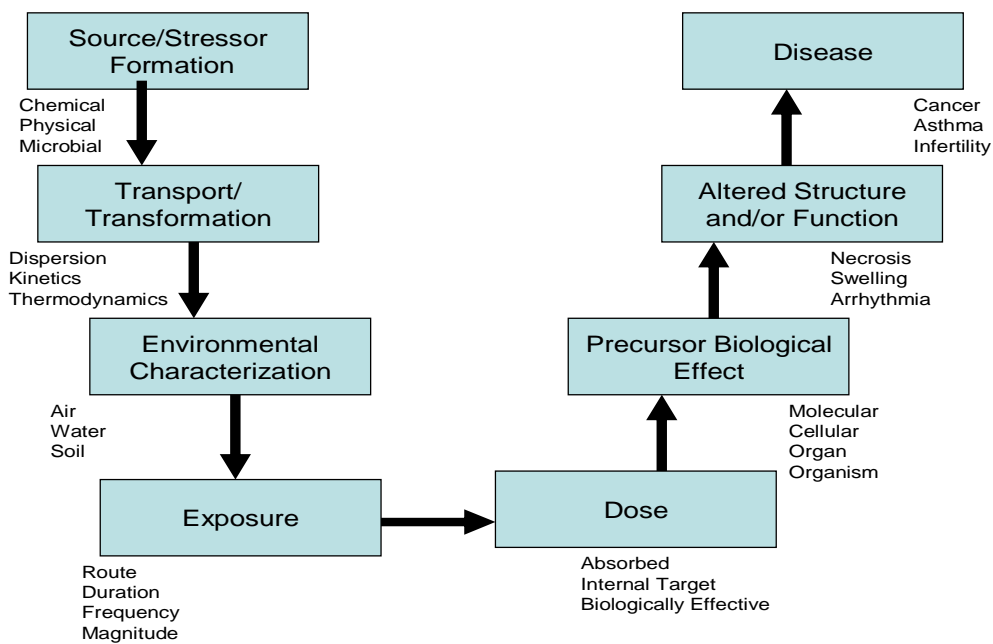


Wyatt Earp, c. 1886



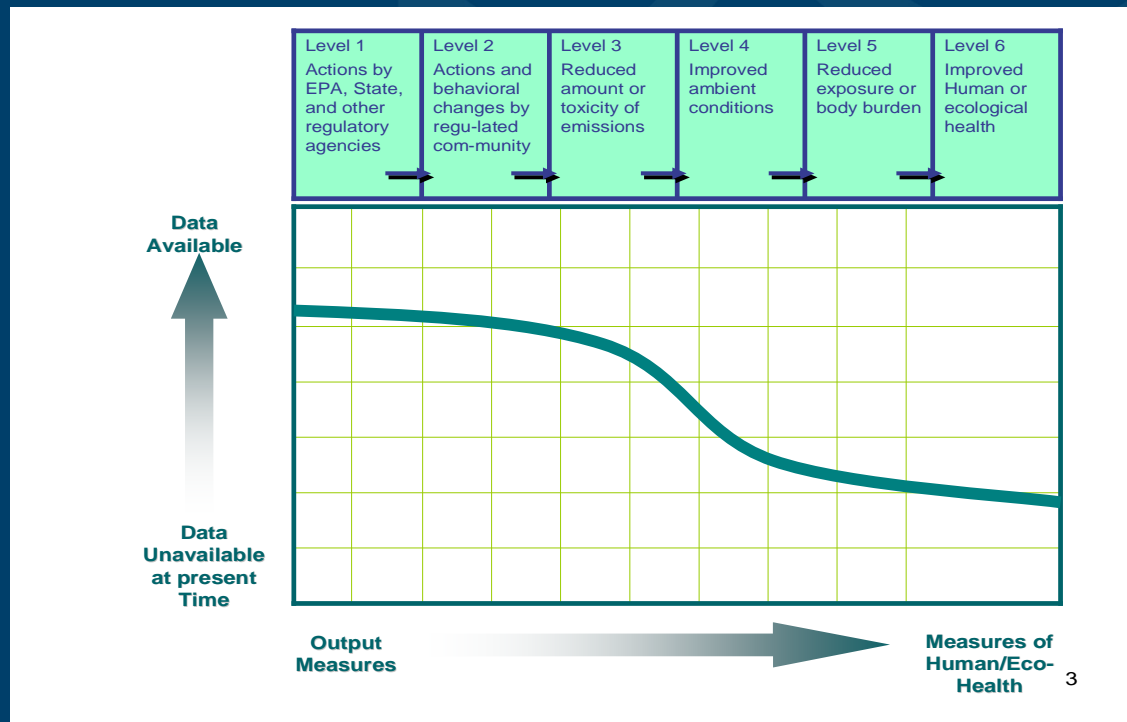


**Figure 1 Process for Assessing Public Health Impacts of Environmental Decisions**

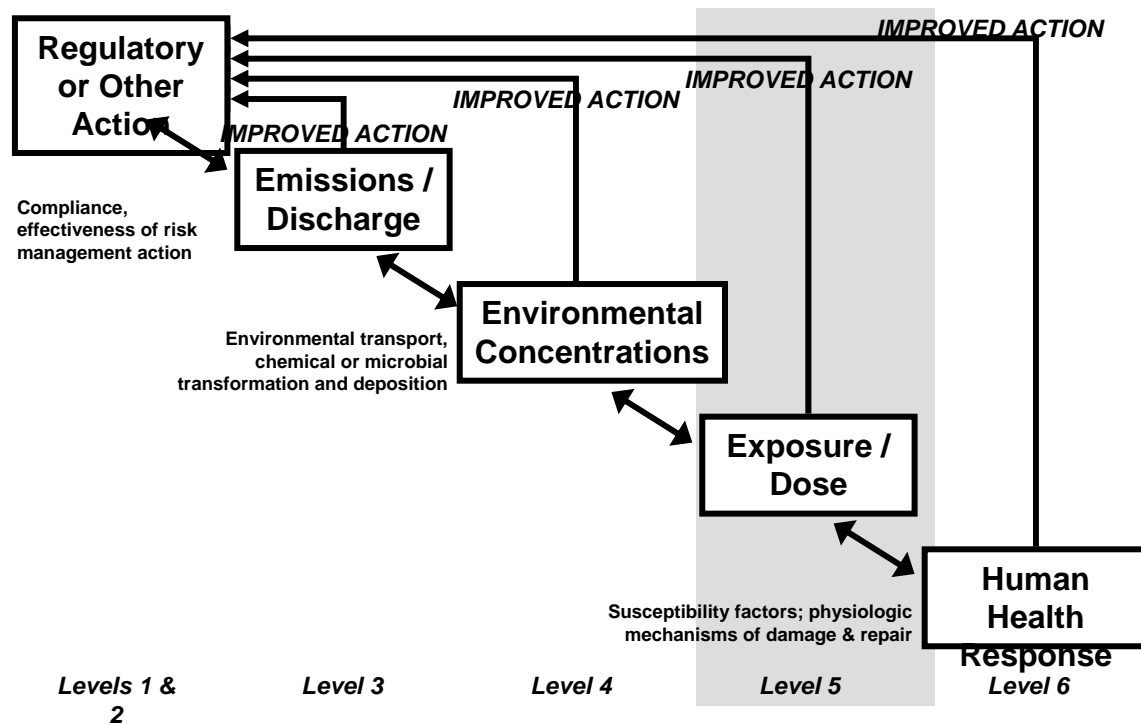


**Figure 2 The Source-Exposure-Dose-Effects Continuum**

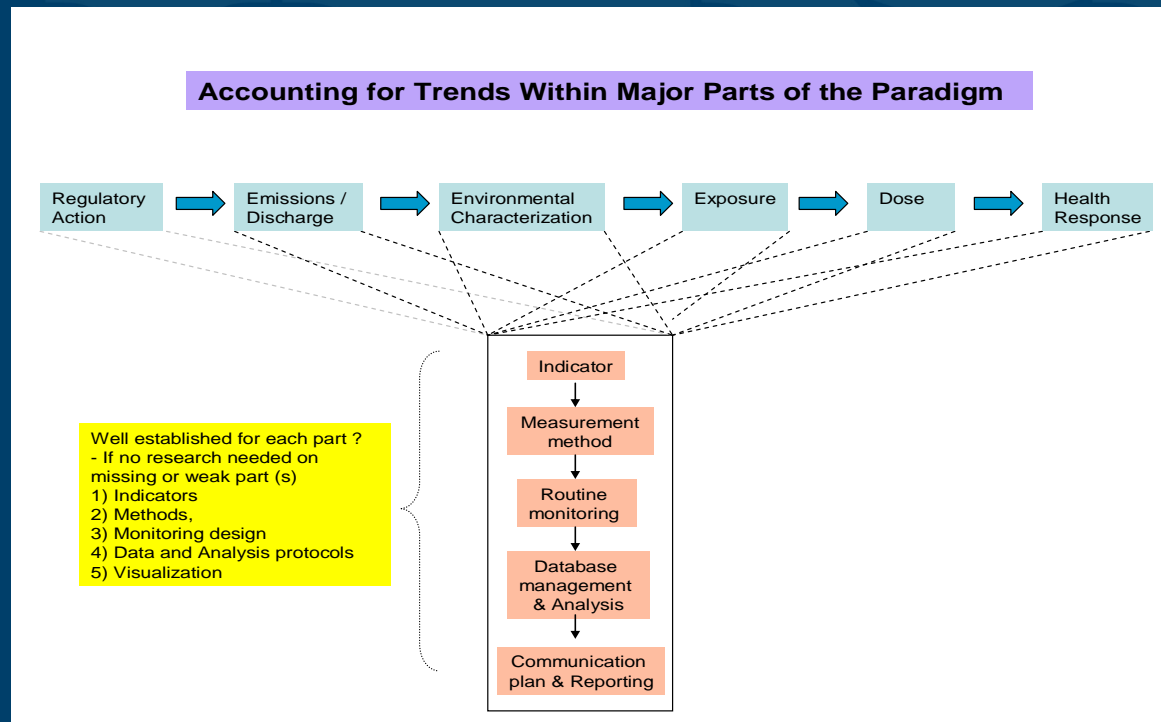
## Comparing Data Availability Across the Source-to-Effects Continuum



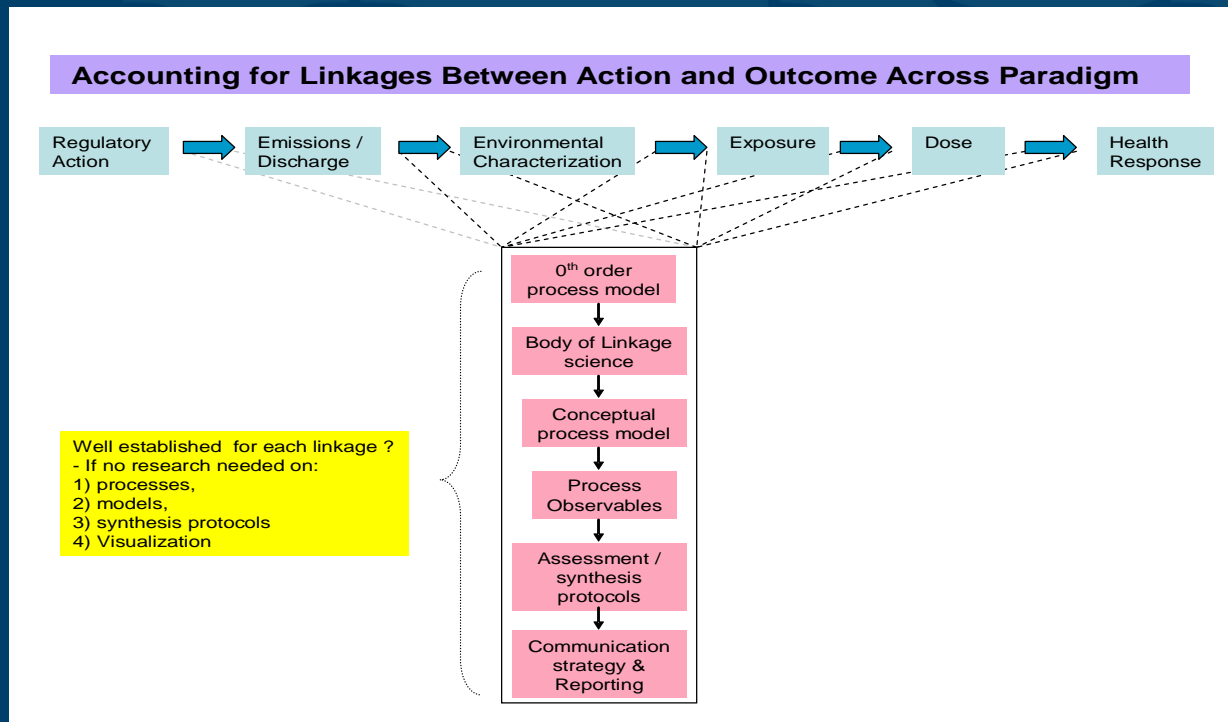
## Framework for Indicator Research



# Paradigm Guiding a Research Program on Indicators



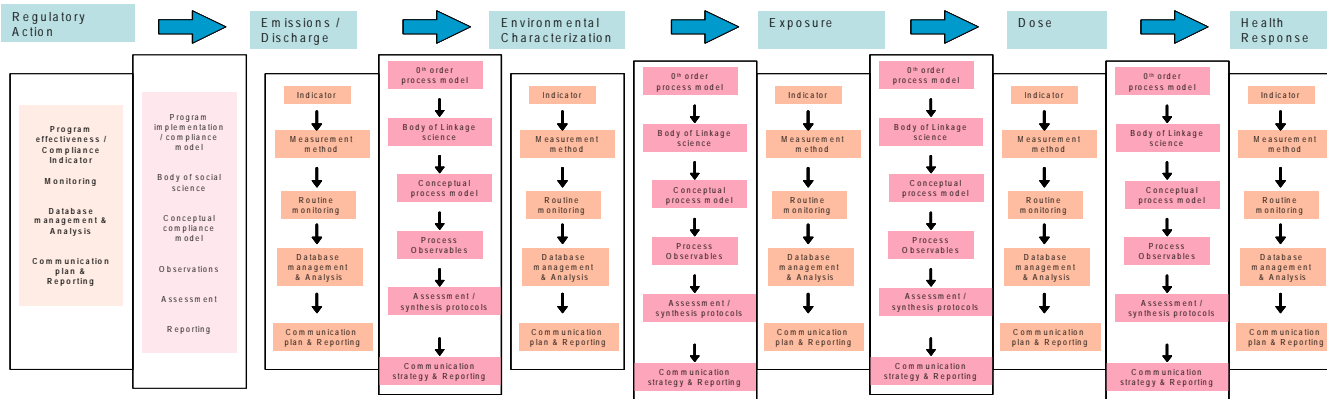
# Elements Needed to Provide Linkages between Components in the Guiding Framework





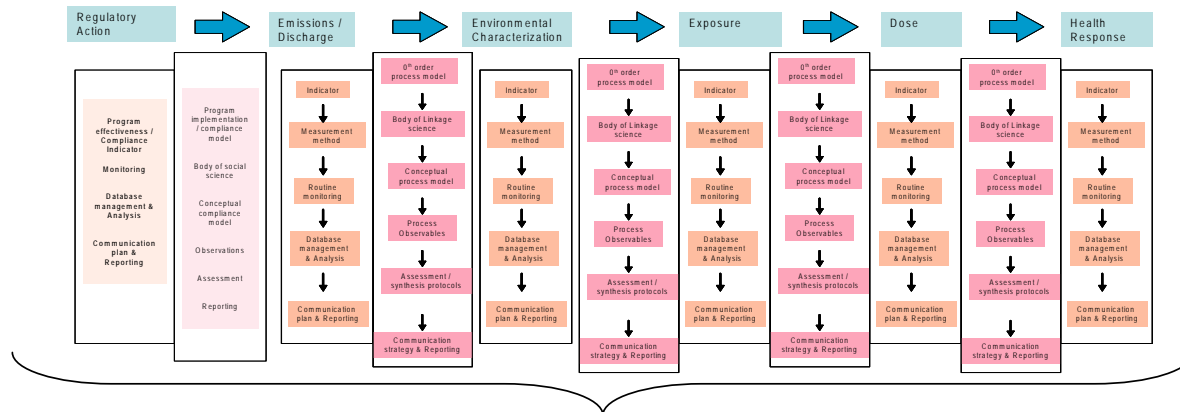
# Comprehensive Framework Illustrating Indicators and Linkages

## Comprehensive framework: Combined set: Accounting for Trends and Linkages Across Paradigm



# Application of the Framework as a Driver for Research

## Application of Comprehensive Research Framework



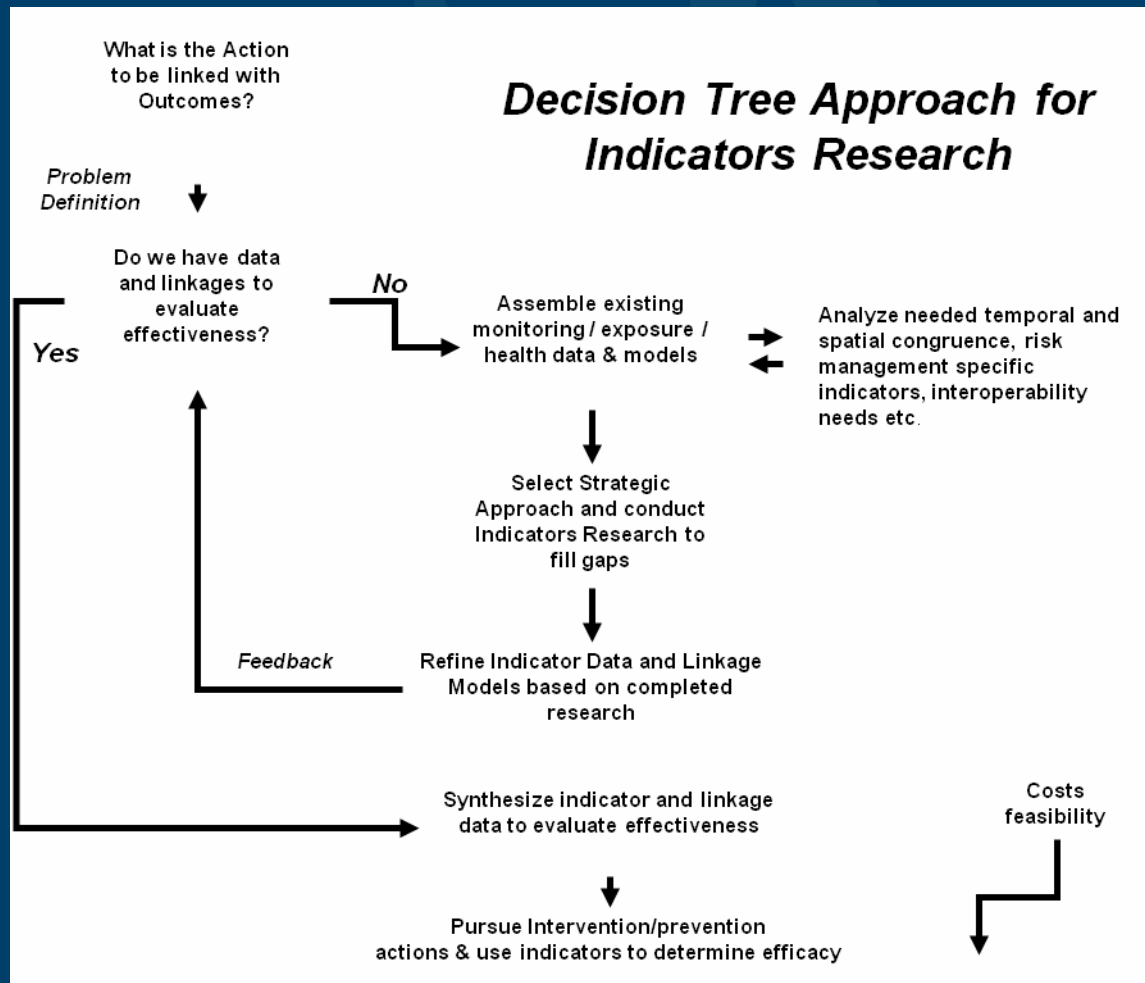
Cross regulatory action to health response paradigm conceptual model

Cross paradigm assessment and synthesis protocol

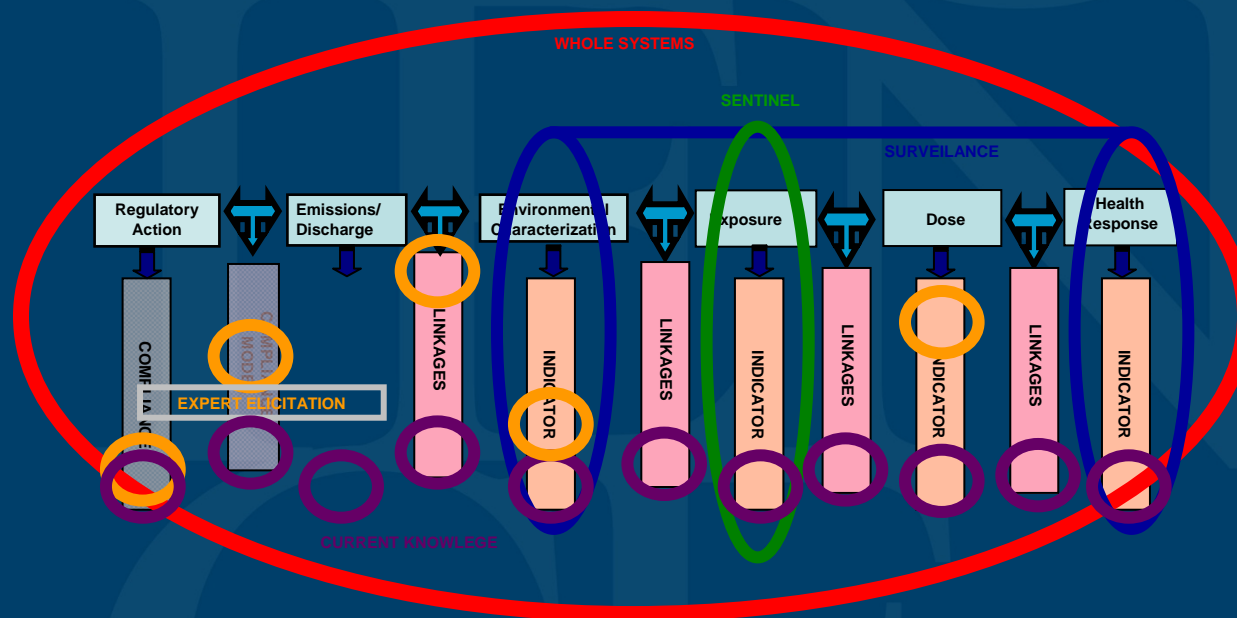
Cross paradigm communication strategy and reporting

Research needs across framework determined by first order analysis for given regulatory action

# Decision Tree for Indicator Research Needs



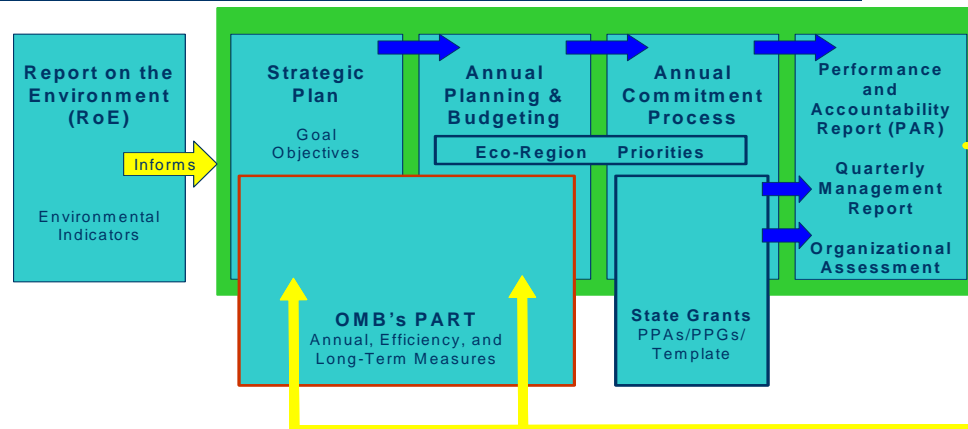
# Holistic Approach to Indicator Framework



# Closing the Loop on Research Planning

## EPA's Performance Measures Framework

Planning, Budgeting, and Accountability – Preuss Oct. 16, 2006



18

### **REMOVE AFTER READING**

#### *Design Notes:*

This slide is included as a guide to illustrate how to place oversized images/charts on a content page and retain the EPA/ORD communications standards. The background of the imported image must be set to white, and the frame stretched to cover the background EPA logo in the upper left corner.

The image element and the text box below are foreground elements that mask the default background image and text boxes from appearing.