

# BARC e-Update

Beltsville Agricultural Research Center

10300 Baltimore Avenue

Beltsville, MD 20705

Phone: 301.504.5193

To subscribe, please email: [BA-Office@ba.ars.usda.gov](mailto:BA-Office@ba.ars.usda.gov)

Access past e-Updates at [www.ars.usda.gov/ba/e-Update](http://www.ars.usda.gov/ba/e-Update)

April 2006



**BARC** is part of the USDA's Agricultural Research Service and encompasses programs at the Beltsville Agricultural Research Center; the U.S. National Arboretum in Washington, D.C.; and worksites in Chatsworth, New Jersey; Presque Isle, Maine; and McMinnville, Tennessee. BARC is the largest and most diversified agricultural research complex in the world. BARC's record of accomplishments and its ongoing programs have made it a world leader in agricultural research.

## Blowing Our Own Horn!



### TWO BARC SCIENTISTS ELECTED FELLOWS OF ASN



Dr. Gary Beecher (retired, Food Composition Laboratory) and Dr. Orville Levander (Nutrient Requirements and Function Laboratory) were elected Fellows of the American Society for Nutrition (ASN) in recognition of their distinguished careers in nutrition. ASN has over 3,500 members and is the premier research society dedicated to improving the quality of life through the science of nutrition. For more information, visit [www.asnutrition.org](http://www.asnutrition.org).

### ARS BEST WEB SITES

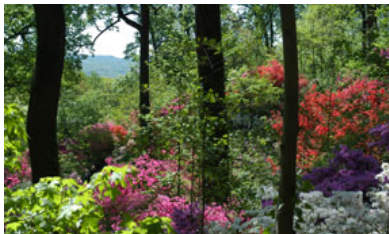


Agricultural Research Service (ARS), Office of the Chief Information Officer, Web Branch has recognized five Beltsville Area web sites as being among the best in all of ARS. The Beltsville Area, Beltsville Human Nutrition Research Center, Animal & Natural Resources Institute, and Hydrology and Remote Sensing Laboratory web sites were recognized as ARS Best Web Sites. The Molecular Plant Pathology Laboratory was recognized as having an ARS Best People and Places web site. Visit BARC on the web at <http://ars.usda.gov/ba>.

## Community Interest...

### 2006 AZALEA BLOSSOM WATCH AT THE US NATIONAL ARBORETUM

Experience the explosion of color when thousands of azaleas at the National Arboretum light up the forest with their subtle shades and colors. In 2006, the peak azalea bloom should be between April 22-30. However, the first azaleas begin to bloom in early April with the daffodils and the forsythia, and still others are blooming as late as July with the daylilies.



The best time to schedule your visit is on a week day, but if weekends are your only option, a stroll through the garden before noon or during a light rain offers an enviable second choice. A drive around Azalea Road can be exhilarating because of the views of the Collection, but if you can afford the time and take a walk, it is worthwhile. Park in the nearby M Street parking area, and walk to the Morrison Garden. Pick up a brochure there, and begin your journey into the world of azaleas.

### POTOMAC BONSAI ASSOCIATION SHOW & SALE AT THE ARBORETUM: MAY 19<sup>TH</sup> – 21<sup>ST</sup>

*Friday, May 19 ~ 12:00 PM to 5:00 PM*  
*Saturday, May 20 ~ 9:00 AM to 5:00 PM*  
*Sunday, May 21 ~ 9:00 AM to 4:00 PM*

*Lecture & Demonstrations*  
*May 20 & 21, 11:00 AM & 1:30 PM*

*Administration Building Auditorium*  
*& Plant Sales Area*

This annual event is an absolute must for all bonsai enthusiasts. The show exhibits some of the finest privately owned bonsai and viewing stones in the Washington area. Lecture/demonstrations will be offered twice daily both Saturday and Sunday. Fourteen vendors will be on site offering a complete selection of bonsai supplies, including starter plants, styled bonsai, pots, viewing stones, stands, tools, literature, and more. Free. No registration required.



## R&D OF BIODEGRADABLE NURSERY POTS

At BARC, on April 19, 2006, Antoinette Betschart, Associate Administrator for the Agricultural Research Service, and K. Marc Tefteau, Director of the Horticultural Research Institute of the American Nursery and Landscape Association signed a Cooperative Research and Development Agreement to develop biodegradable nursery containers from bio-based waste products. The initial research effort will concentrate on the use of feather-derived plastics from the waste stream of the poultry industry. Justin Barone of the Environmental Management and Byproduct Utilization Laboratory and Donna Fare of the Floral and Nursery Plants Research Unit will be conducting the research.



**Tefteau and Betschart at signing ceremony**

## NUTRITION STUDY RESULTS:

### LIFESTYLE FACTORS AND WEIGHT MANAGEMENT

Shanthy Bowman of BARC's Community Research Nutrition Group authored a chapter in the recently published book titled *Body Mass Index: New Results* (published by Nova Science Publishers). Bowman's study of more than 8,500 adults reveals that overweight adults (BMI of 25 or higher) generally eat about 100 more calories a day than normal weight adults, and most of these calories are consumed during evening meals. Her research shows that some adults who skip breakfast compensate for it by eating foods that are higher in fat and/or sugar later in the day. Bowman found that adults who watched more than two hours of television a day were about twice as likely to be overweight as adults who did not watch TV.

**Bowman analyzes dietary data**



## Mark Your Calendar!



### DISTRINGUISHED LECTURE SERIES

*Next Lecture is Wednesday, May 17<sup>th</sup>  
Lecture Series is Open to the Public*

**Speaker:** Dr. Ronald Fayer, Zoologist, Environmental Microbial Safety Laboratory, Animal & Natural Resources Institute, BARC

**Title:** "Epidemiology of Human Pathogens from Livestock, Companion Animals, and Wildlife"

**Time/Location:** May 17, 10:30 AM, Bldg. 003 Auditorium

**For more information, please call 301.504.6078.**

### FLORAL AND NURSERY PLANTS RESEARCH UNIT GREEN INDUSTRY OPEN HOUSE: MAY 9<sup>TH</sup>

This event is being held at the US National Arboretum, and it begins at 8:30 AM. Take advantage of this unique opportunity to learn about FNPRU research and to provide input on how its scientists can address your concerns in the Green Industry. Lunch is provided at 11:30 AM, and tours of research fields, Beltsville facilities, and/or visits with scientists will begin at 12:30 PM. There is no charge for this event, but pre-registration for lunch and tours is requested. For more information, contact Fran Kolpack at 301.504.7244 or [kolpackf@ba.ars.usda.gov](mailto:kolpackf@ba.ars.usda.gov).



### UPCOMING INSECT BIOCONTROL SEMINARS



**Wednesday, May 3, 10:00 AM**

**Astri Wayadande**, Department of Entomology and Plant Pathology, Oklahoma State University  
"Cucurbit yellow vine disease: Discovery of an unusual insect-pathogen interaction"

Building 011A, Conference Room, BARC-West

For information contact: Don Weber, 301.504.8369

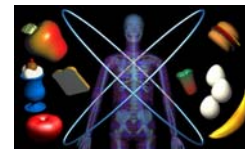
**Thursday, May 18, 3:00 PM**

**Lawrence A. Lacey**, Insect Pathologist, USDA ARS, Yakima Agricultural Research Laboratory, Wapato, WA  
"Microbial control of codling moth: searching for weapons of moth destruction"

Building 011A, Conference Room, BARC-West

For information contact: Fernando Vega, 301.504.5101

### BHNRC WINTER/SPRING SEMINAR SERIES CONTINUES



**Tuesday, May 2, 1:30 PM**

**Alberta Frost and Staff**, Office of Analysis & Evaluation, Food & Nutrition Services

"What's Going on in FNS Research: Recent Findings and Future Research Priorities"

Building 307C, Room 122, BARC-East

For information contact: Ellen Harris, 301.504.0610

**Tuesday, May 16, 1:30 PM**

**Gloria Solano-Aguilar**, BHNRC, Nutrient Requirements & Functions Laboratory

"The Effect of Dietary Probiotics on the Immune and Gastrointestinal Function"

Building 307C, Room 122, BARC-East

For information contact: Gloria Solano-Aguilar, 301.504.8068

### USDA Non-Discrimination Statement

The U.S. Department of Agriculture (USDA) prohibits discrimination in all its programs and activities on the basis of race, color, national origin, sex, religion, age, disability, political beliefs, sexual orientation, and marital or family status. (Not all prohibited bases apply to all programs.) Persons with disabilities who require alternative means for communication of program information (Braille, large print, audiotape, etc.) should contact USDA's TARGET Center at (202) 720-2600 (voice and TDD). USDA is an equal opportunity provider and employer.

