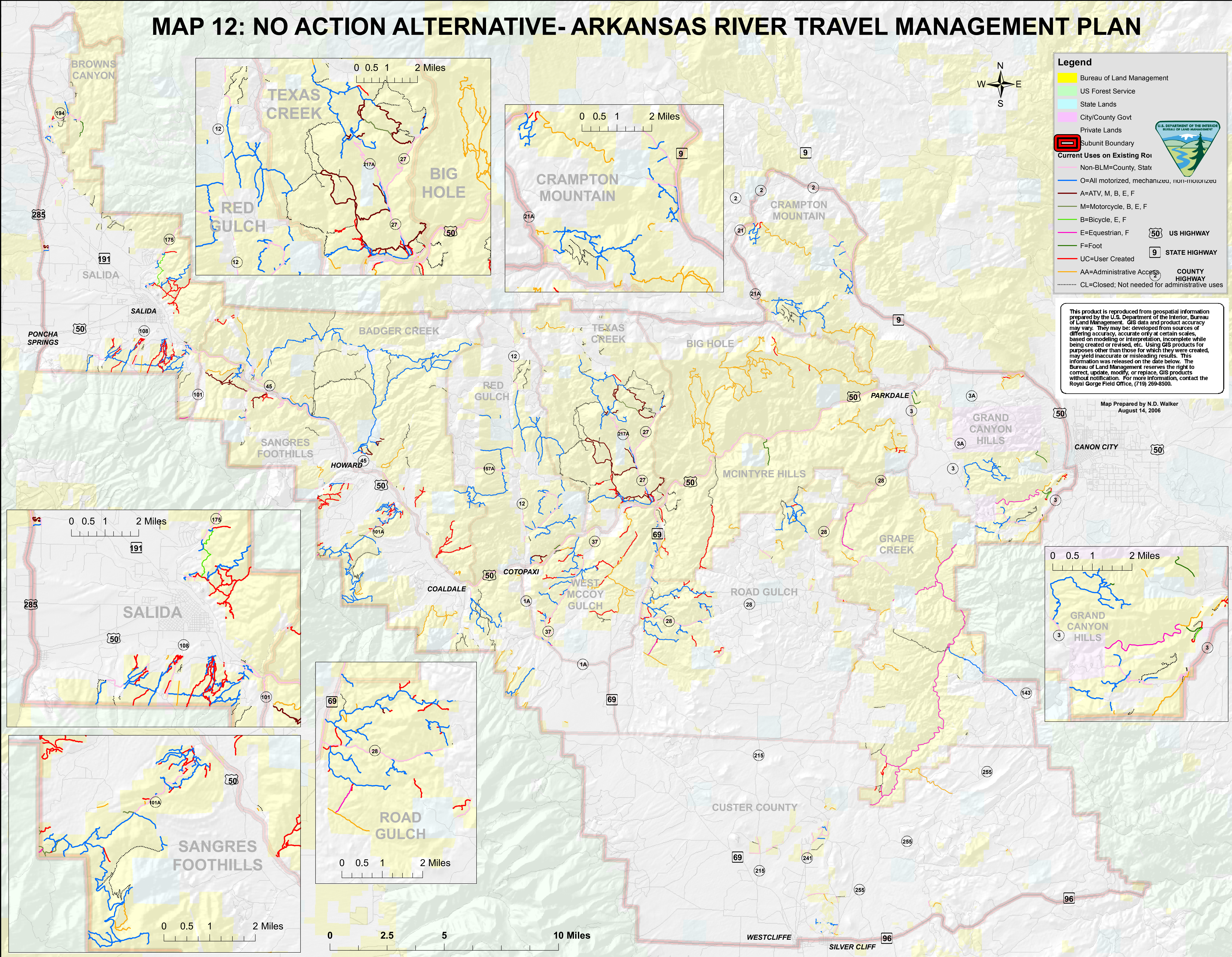


# MAP 12: NO ACTION ALTERNATIVE- ARKANSAS RIVER TRAVEL MANAGEMENT PLAN




**Legend**

- Bureau of Land Management
- US Forest Service
- State Lands
- City/County Govt
- Private Lands
- Subunit Boundary

**Current Uses on Existing Roi**

- Non-BLM=County, State
- O=All motorized, mechanized, non-motorized
- A=ATV, M, B, E, F
- M=Motorcycle, B, E, F
- B=Bicycle, E, F
- E=Equestrian, F
- F=Foot
- UC=User Created
- AA=Administrative Access
- CL=Closed; Not needed for administrative uses



**50** US HIGHWAY

**9** STATE HIGHWAY

**3** COUNTY HIGHWAY

This product is reproduced from geospatial information prepared by the U.S. Department of the Interior, Bureau of Land Management. GIS data and product accuracy may vary. They may be developed from sources of differing accuracy, accurate only at certain scales, based on modeling or interpretation, incomplete while being created or revised, etc. Using GIS products for purposes other than those for which they were created, may yield inaccurate or misleading results. This information was released on the date below. The Bureau of Land Management reserves the right to correct, update, modify, or replace, GIS products without notification. For more information, contact the Royal Gorge Field Office, (719) 269-8500.

Map Prepared by N.D. Walker  
August 14, 2006