

DO-12 APPENDIX 1
ENVIRONMENTAL SCREENING FORM
 (REVISED November 2003)

This form should be attached to all documents sent to the regional director's office for signature. Sections A and B should be filled out by the project initiator (may be coupled with other park project initiation forms). Sections C, D, E, and G are to be completed by the interdisciplinary team members. While you may modify this form to fit your needs, you must ensure that the form includes information detailed below and must have your modifications reviewed and approved by the regional environmental coordinator.

A. PROJECT INFORMATION

Park Name

Harpers Ferry NHP

Project Number

16556

Project Type

Easement for Water Line (OTHER)

Project Location

County, State: Jefferson County, West Virginia

Project Originator/Coordinator

Bill Hebb

Project Title

Reroute Harpers Ferry Waters Works Main Line at Elk Run

Administrative Record Location

Brackett House

Administrative Record Contact

Dale Nisbet

B. PROJECT DESCRIPTION/LOCATION *[To begin the statutory compliance file, attach to this form, maps, site visit notes, agency consultation, data, reports, categorical exclusion form (if relevant), or other relevant materials.]*

The Harpers Ferry Water Works, a public utility owned by the Corporation of Harpers Ferry, has requested permission to reroute its 8-inch main line on park land on Tract 102-11 near Elk Run. The current line is exposed in Elk Run where it crosses the stream at two locations. The Water Works is concerned that the line could be damaged by large debris coming down Elk Run during a flood event. If this happened, the two towns (Harpers Ferry and Bolivar) and the park would be without water until repairs could be made. Since the proposed route of the new line is within the same NPS tract of land, the park proposes to issue the Corporation of Harpers Ferry a Special Use Permit to install a new 8-inch line. To make this permanent, the park proposes to convey in a Deed of Exchange the new 30-foot wide easement for the town's current 30-foot wide easement. The length of both easements is approximately the same. An assessment is needed to determine if archeological or other historic features are present in the proposed easement. A map showing the location of the new and existing easement is attached.

Preliminary drawings attached? No

Background info attached? No

Date form initiated

08/14/2006

C. RESOURCE EFFECTS TO CONSIDER (Tailor the following to meet individual park/unit project needs.)

Please see section F (Instructions for Determining Appropriate NEPA Pathway) prior to completing this section. Also, use the process described in DO-12, 2.9 and 2.10; 3.5; 4.5(G) to (G)(5) and 5.4(F) to help determine the context, duration and intensity of effects on resources.

Are any impacts possible on the following physical, natural or cultural resources?	Yes	No	N/A	Data Needed to Determine/Notes
1. Geological resources -- soils, bedrock, streambeds, etc.	X			soil will be removed and replaced
2. From geohazards		X		
3. Air quality		X		
4. Soundscapes		X		
5. Water quality or quantity		X		
6. Streamflow characteristics		X		
7. Marine or estuarine resources			X	
8. Floodplains or wetlands		X		
9. Land use, including occupancy, income, values, ownership, type of use		X		
10. Rare or unusual vegetation -- old growth timber, riparian, alpine		X		
11. Species of special concern (plant or animal; state or federal listed or proposed for listing) or their habitat		X		
12. Unique ecosystems, biosphere reserves, World Heritage Sites		X		
13. Unique or important wildlife or wildlife habitat		X		
14. Unique or important fish or fish habitat		X		
15. Introduce or promote non-native species (plant or animal)		X		
16. Recreation resources, including supply, demand, visitation, activities, etc.		X		
17. Visitor experience, aesthetic resources		X		
18. Cultural resources including cultural landscapes, ethnographic resources	X	X		SITE SURVEY NEEDED

19. Socioeconomics, including employment, occupation, income changes, tax base, infrastructure		X		
20. Minority and low income populations, ethnography, size, migration patterns, etc.		X		
21. Energy resources		X		
22. Other agency or tribal land use plans or policies		X		
23. Resource, including energy, conservation potential		X		
24. Urban quality, gateway communities, etc.		X		
25. Long-term management of resources or land/resource productivity		X		
26. Other important environment resources (e.g. geothermal, paleontological resources)?		X		

D. MANDATORY CRITERIA

Mandatory Criteria: If implemented, would the proposal:	Yes	No	N/A	Data Needed to Determine/Notes
A. Have material adverse effects on public health or safety?		X		
B. Have adverse effects on such unique characteristics as historic or cultural resources; park, recreation, or refuge lands; wilderness areas; wild or scenic rivers; national natural landmarks; sole or principal drinking water aquifers; prime farmlands; wetlands; floodplains; or ecologically significant or critical areas, including those listed on the National Register of Natural Landmarks?		X		
C. Have highly controversial environmental effects?		X		
D. Have highly uncertain and potentially significant environmental effects or involve unique or unknown environmental risks?		X		
E. Establish a precedent for future action or represent a decision in principle about future actions with potentially significant		X		

environmental effects?				
F. Be directly related to other actions with individually insignificant, but cumulatively significant, environmental effects?		X		
G. Have adverse effects on properties listed or eligible for listing on the National Register of Historic Places?		X		
H. Have adverse effects on species listed or proposed to be listed on the List of Endangered or Threatened Species or have adverse effects on designated Critical Habitat for these species?		X		
I. Require compliance with Executive Order 11988 (Floodplain Management), Executive Order 11990 (Protection of Wetlands), or the Fish and Wildlife Coordination Act?		X		
J. Threaten to violate a federal, state, local, or tribal law or requirement imposed for the protection of the environment?		X		
K. Involve unresolved conflicts concerning alternative uses of available resources (NEPA sec. 102(2)(E))?		X		
L. Have a disproportionate, significant adverse effect on low-income or minority populations (EO 12898)?		X		
M. Restrict access to and ceremonial use of Indian sacred sites by Indian religious practitioners or adversely affect the physical integrity of such sacred sites (EO 130007)?		X		
N. Contribute to the introduction, continued existence, or spread of federally listed noxious weeds (Federal Noxious Weed Control Act)?		X		
O. Contribute to the introduction, continued existence, or spread of non-native invasive species or actions that may promote the introduction, growth or expansion of the range of non-native invasive species (EO 13112)?		X		
P. Require a permit from a federal, state, or local agency to proceed, unless the agency from which the permit is required agrees that a CE is appropriate?		X		

Q. Have the potential for significant impact as indicated by a federal, state, or local agency or Indian tribe?		X		
R. Have the potential to be controversial because of disagreement over possible environmental effects?		X		
S. Have the potential to violate the NPS Organic Act by impairing park resources or values?		X		

E. OTHER INFORMATION

Are personnel preparing this form familiar with the site?

Did personnel conduct a site visit? **No**

Is the project in an approved plan such as a General Management Plan or an Implementation Plan with an accompanying environmental document? **No**

Are there any interested or affected agencies or parties? **Harpers Ferry Water Works**

Did you make a diligent effort to contact them? **Yes**

Has consultation with all affected agencies or tribes been completed? **Yes**

Are there any connected, cumulative, or similar actions as part of the proposed action? **No**

F. INSTRUCTIONS FOR DETERMINING APPROPRIATE NEPA PATHWAY

First, always check DO-12, section 3.2, "Process to Follow" in determining whether the action is categorically excluded from additional NEPA analyses. Other sections within DO-12, including sections 2.9 and 2.10; 3.5; 4.5(G)(4) and (G)(5), and 5.4(F), should also be consulted in determining the appropriate NEPA pathway. Complete the following tasks: conduct a site visit or ensure that staff is familiar with the site's specifics; consult with affected agencies, and/or tribes; and interested public and complete this environmental screening form.

If your action is described in DO-12 section 3.3, "CE's for Which No Formal Documentation is Necessary," follow the instructions indicated in that section.



If your action is not described in DO-12, section 3.3, and IS described in section 3.4, AND you checked yes or identified "data needed to determine" impacts in any block in section D (Mandatory Criteria), this is an indication that there is potential for significant impacts to the human environment, therefore, you must prepare an EA or EIS or supply missing information to determine context, duration and intensity of impacts.

If your action is described in section 3.4 and NO is checked for all boxes in section D (Mandatory Criteria), BUT you have initially checked "yes" in section C (Resource Effects to Consider) during internal scoping, this means that the team should do additional analyses to determine the context, duration and intensity of effects. If the magnitude of effects is then determined to be at the negligible or minor level, then usually there is no potential for significant impacts, then an EA or EIS is not required. If, however, during internal scoping and further investigation, resource effects still remain unknown, or are at the minor to moderate level of intensity, and the potential for significant impacts may be likely, an EA or EIS is required.

In all cases, data collected to determine the appropriate NEPA pathway must be included in the administrative record.

G. INTERDISCIPLINARY TEAM SIGNATORY *(All interdisciplinary team members must sign.)*

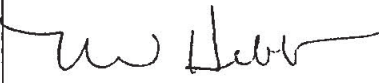
By signing this form, you affirm the following: you have either completed a site visit or are familiar with the specifics of the site; you have consulted with affected agencies and tribes; and you, to the best of your knowledge, have answered the questions posed in the checklist correctly.

Interdisciplinary Team Leader Name  Mia Parsons	Field of Expertise Archeology	Date Signed 8/24/06
Technical Specialists Names  Dale Nisbet	Field of Expertise Natural Resources Specialist	Date Signed 8/15/2006

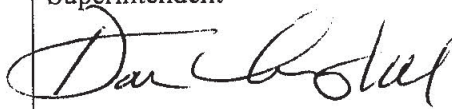
H. SUPERVISORY SIGNATORY

Based on the environmental impact information contained in the statutory compliance file and in this environmental screening form, environmental documentation for this stage of the subject project is complete.

Recommended:

Natural Resources Manager  Bill Hebb	Date Signed 8/15/06
---	------------------------

Approved:

Superintendent  Don Campbell	Date Signed 8/25/04
---	------------------------



Community Bulletin

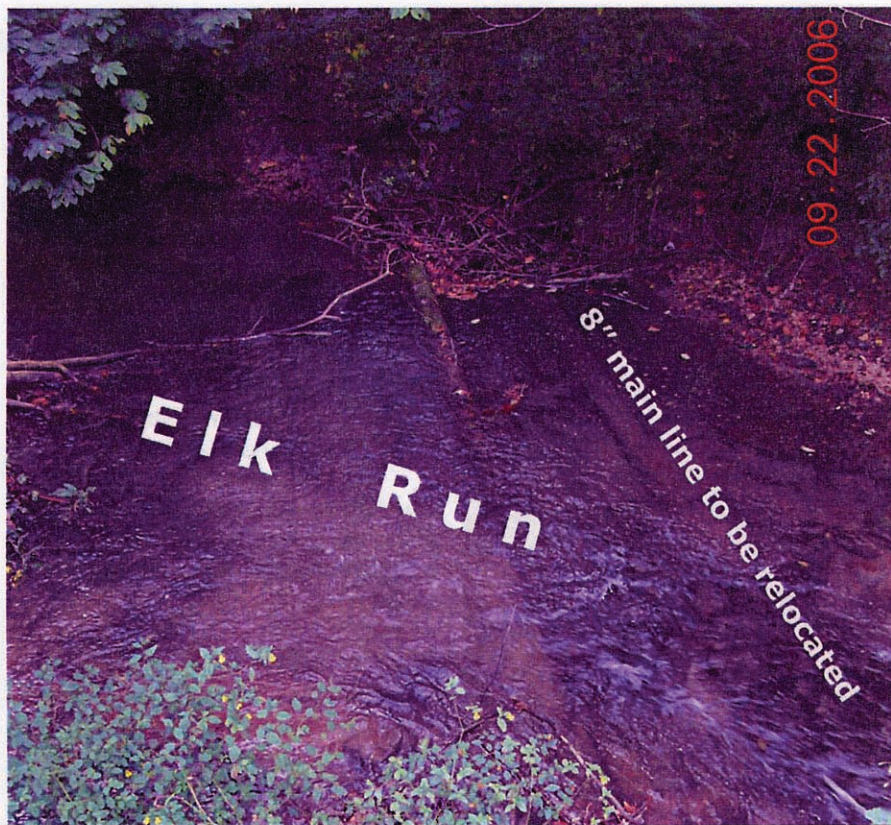
Park to Conduct Environmental Assessment of Water Line Relocation

In accordance with the National Environmental Policy Act of 1969 (NEPA), the National Historic Preservation Act of 1966 (NHPA), the National Park Service (NPS) is conducting an environmental assessment (EA) of the impacts to relocate a 200-foot section of the Harpers Ferry Corporation's main 8" water line in the vicinity of the water treatment plant on Bakerton Road. The current line is exposed where it crosses Elk Run (see picture). This exposed section can be damaged by floating debris during flood events which would disrupt water supply to the Towns of Harpers Ferry and Bolivar and the National Park Service. The Harpers Ferry Water Works has requested to relocate the line to a more suitable location on park land approximately 100 feet south of Elk Run. The existing main line and the original line that has been taken out of service would be removed from the stream when the new line is completed.

the public will have a 30-day review period to comment. This notice and the draft EA, when it is completed, will be available on the park's website at

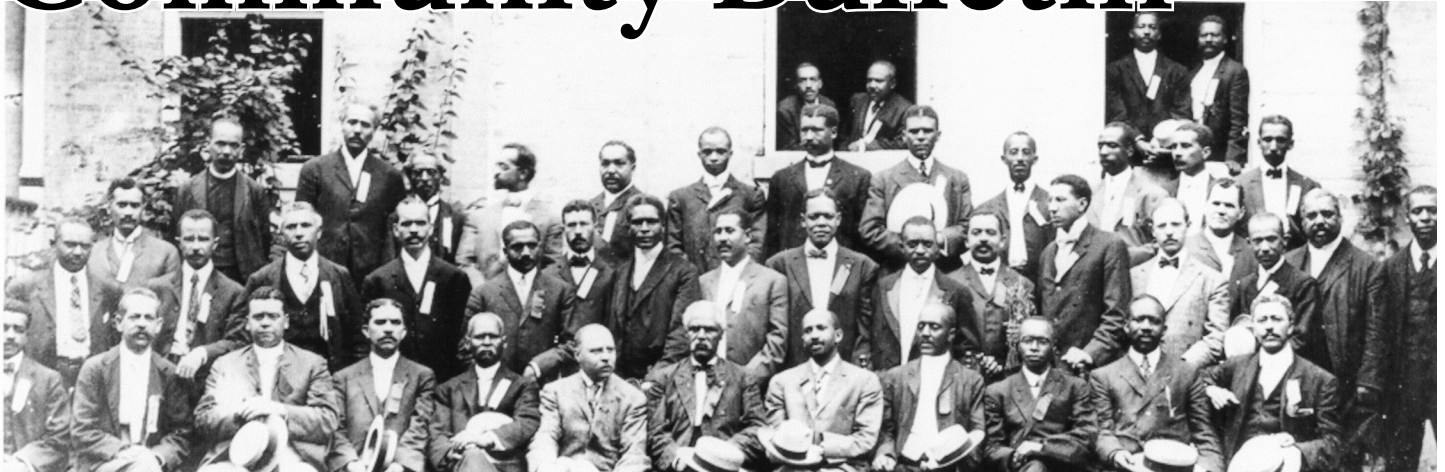
<http://www.nps.gov/hafe> by clicking "Management". For those who have bookmarked the park's website, please reset your bookmark to this URL address.

If you have any concerns that the NPS should address as it prepares the EA, please contact the park's Natural Resource Program Manager at (304) 535-6038. When the draft EA is completed,





Community Bulletin



African American History Month Honors Freeman Henry Morris Murray

As part of its African American History Month Celebration, Harpers Ferry National Historical Park invites the public to attend the opening of a new exhibit, *Freeman Henry Morris Murray: Devoted to Equality and Justice for All*. The opening and reception will be held on Sunday, February 4, at 2:00 p.m. on the second floor of the John Brown Museum on Shenandoah Street. The exhibit remembers the life of F. H. M. Murray, an organizer of the 1906 Niagara Movement meeting held in Harpers Ferry, West Virginia. The program will feature Ms. Anita Hackley-Lambert, Mr. Murray's great-granddaughter and author of his biography.



F.H.M. Murray at the 1906 Niagara Meeting in Harpers Ferry.

Freeman Henry Morris Murray (1859 – 1950) was born in Cleveland, Ohio during a time when African Americans were considered nothing more than second class citizens. Determined to excel in the face of adversity, Murray moved to Alexandria, Virginia, where he fought for equal rights and civil justice.

The exhibit will be open daily from 8:00 a.m. to 5:00 p.m. throughout the month of February.

Bat Gate Installed at John Brown Cave

A bat gate was installed at the entrance to the John Brown Cave recently by Adam's Landscaping and Lawn Care of Martinsburg, WV. The purpose of the gate is to provide access to the cave for bats and wildlife while prohibiting human access. CSX and NPS officials have been working since 2004 to plan the installation. A CSX flagman was required since the entrance is very close to CSX active tracks.

The cave has been closed by CSX and the NPS for many years; however, trespassing on CSX property and violation of the closure has been a problem. In January 2006, park rangers issued violation notices to several people who had illegally entered the cave, disturbing hibernating pipistrelle bats. A biologist, specializing in bats, informed the park the hibernating bats that were handled probably died. In 2002, a father and son were rescued from the

cave when their light sources failed. Several species of salamander are also known to inhabit the cave.

The gate is based on a design by Mr. Roy Powers, Civil Engineer, who has constructed similar gates across the United States. The design was modified to fit the entrance. If you have any questions about this project, contact the park's Natural Resource Manager at 304 535-6038.

Main Street News

from Director Betsy Bainbridge

Wintertime is traditionally a quiet period in Lower Town Harpers Ferry, when cold weather discourages people from strolling around town. So far this winter we have seen a change in this trend. Happily, our Bed and Breakfasts and downtown businesses have kept busy with the very popular Christmas events and visitors on holiday. The unseasonably warm weather has encouraged more of us to enjoy our town and its sights on foot, especially on weekends. Harpers Ferry Park reports a 10.5 percent increase in visitation for 2006.

Main Street suggests you join your neighbors in taking the opportunity to check out the exterior of the newly renovated train station, have lunch, do a little shopping, and enjoy our unique downtown.



National Park Service
U.S. Department of the Interior

The history of Harpers Ferry has few parallels in the American drama. It is more than one event, one date, or one individual. It is multi-layered, involving a diverse number of people and events, decisions and actions that influenced the course of our nation's history. Visit Harpers Ferry and step into history.

Harpers Ferry National Historical Park
P.O. Box 65
Harpers Ferry, West Virginia 25425

Visitor Center
304-535-6029

Harpers Ferry Historical Association Bookshop
304-525-6881 or 800-821-5206

Harpers Ferry NHP Home Page
www.nps.gov/hafe/

The National Park Service cares for the special places saved by the American people so that all may experience our heritage.

Information Center Refurbished

The Master Armorer's House, has been utilized as the Lower Town Information Center since 1997. After the last flood in September 1996, the building was cleaned and renovated with new paint and carpeting. It has been upgraded through the years to include modern air conditioning and heating. In October 2006 the Buildings and Utility Department of Harpers Ferry NHP initiated work on the first floor to update and refresh the center. Led by Project Leader Larry Moore, the entire B&U department has been actively involved in this project. Additional assistance has been received from the Citizens Conservation Corps of West Virginia led by supervisor Josh Baldwin. Air quality was tested by an outside source to ensure the Park offered visitors the best environment possible. The heating and air conditioning systems have been upgraded to include cleaning and sanitation of all duct systems and the introduction of fresh air into the environment. Old carpeting was removed and the wood floors have been refinished. In addition, ceilings and walls received a fresh coat of paint and all new exhibit lighting will be installed throughout the first floor. Completion of all work and the reopening of the Information Center is anticipated during the month of February.



Project Leader Larry Moore prepares the Information Center to reopen in February.

Draft Environmental Assessment of Water Line Relocation

In accordance with the National Environmental Policy Act of 1969 (NEPA), the National Historic Preservation Act of 1966 (NHPA), the National Park Service (NPS) has prepared a draft environmental assessment (EA) to relocate a 200-foot section of the Harpers Ferry Water Works' water supply line in the vicinity of the water treatment plant on Bakerton Road. Public notice of this project was provided in the park's October 2006 Community Bulletin and on the park's website at <http://www.nps.gov/hafe>.

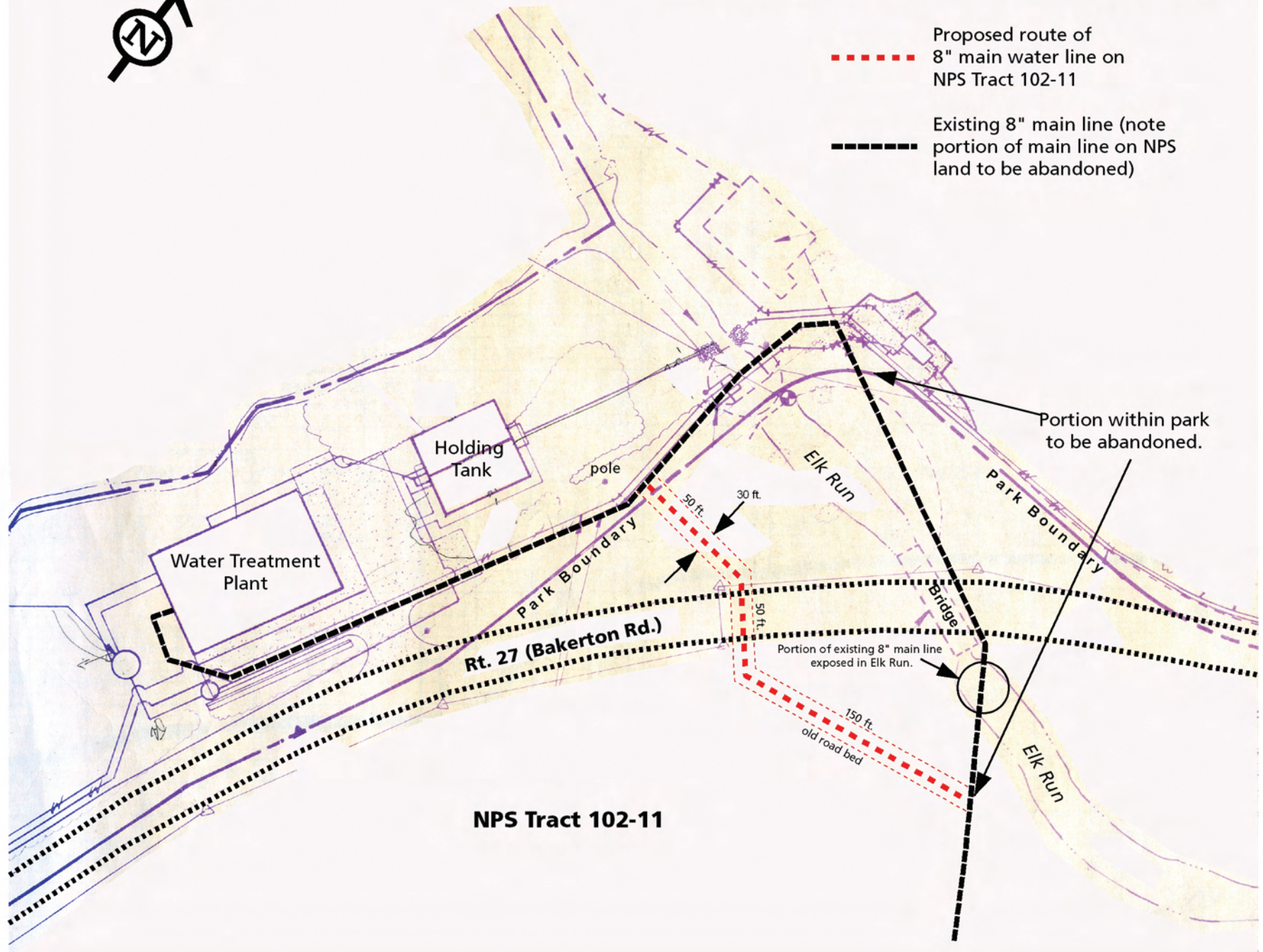
The current line is exposed where it crosses Elk Run. This exposed section can be damaged by floating debris during flood events which would disrupt and possibly contaminate the community's water supply, which serves the Towns of Harpers Ferry and Bolivar and the National Park Service. The Harpers Ferry Water Works has requested to relocate the line to a more suitable location on park land approximately 75 feet south of Elk Run. The existing main line would be removed from the stream when the new line is completed.

The draft EA is available for 30-day public review from January 30 to February 28, 2007. During this period, hard copies will be placed in the Bolivar Library, Harpers Ferry Town Hall and the park's headquarters in the Morrell House on Fillmore Street. An Acrobat Reader (pdf) version will be available on the park's website at <http://www.nps.gov/hafe> by clicking "Management". For those who have bookmarked the park's website, please reset your bookmark to this URL address.

Map Showing Location of Proposed Relocation of Main Water Line



- Proposed route of 8" main water line on NPS Tract 102-11
- Existing 8" main line (note portion of main line on NPS land to be abandoned)



RECEIVED
Harpers Ferry Water Works

2006 MAY 15 AM 9:24
1000 WASHINGTON STREET
P. O. BOX 217
HARPERS FERRY, WEST VIRGINIA 25425
HARPERS FERRY, WV

OFFICE: (304) 535-2206
PLANT: (304) 535-6555
FAX: (304) 535-6520

5/15/06
wgt
tear
[Handwritten signatures]

May 10, 2006

Harpers Ferry Historical National Park
Attn: Michael Castagnetto
P. O. Box 65
Harpers Ferry, WV 25425

Dear Mr. Castagnetto,

The Harpers Ferry Water Works is requesting permission to reroute the 8" water main on your property near Elk Run and the water plant as shown on enclosed map.

The line now crosses Elk Run toward Elk Run raw water pump station and then returns across Elk Run near where Route 27 crosses Elk Run.

The main is now exposed in the Creek and in danger of being broken by large debris coming down Elk Run in a flood situation. This would leave the National Park Service, as well as the Towns of Harpers Ferry and Bolivar, without water. There is also the possibility of a leak occurring at the exposed joints in the line which would be very hard to detect much less repair.

The proposed line would tie into the existing line north east of the water plant run perpendicular to that line towards Route 27, turn at a 45 degree angle and continue approximately 250 feet to the existing 8" line, where it will be connected with a 45 degree angle fitting. Snyder's Environmental would be doing the boring under Route 27.

There is an old road bed where the line would run and very little vegetation would be disturbed.

Thank you for your cooperation.

Respectfully,

John P. Heafer
John P. Heafer
Superintendent

cc: Superintendent Don Campbell