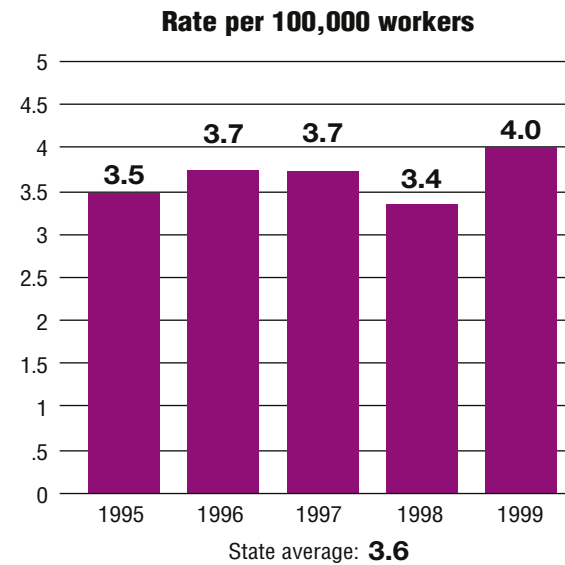
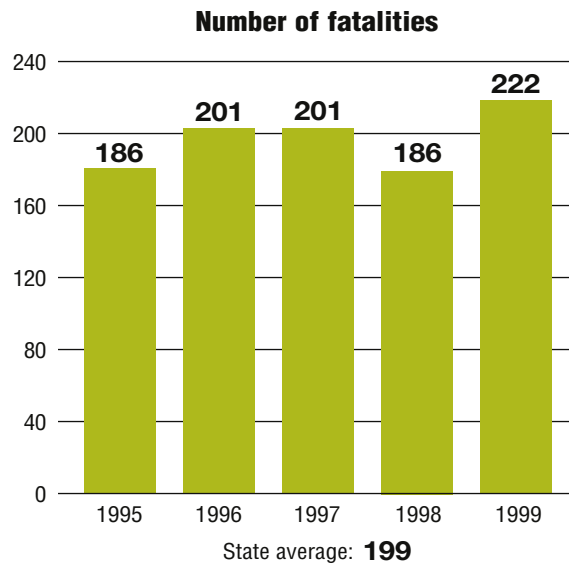


Total fatalities, 1995–99:	<b>996</b>
Average fatalities per year:	<b>199</b>
Five-year average fatality rate:	<b>3.6</b>



# Ohio

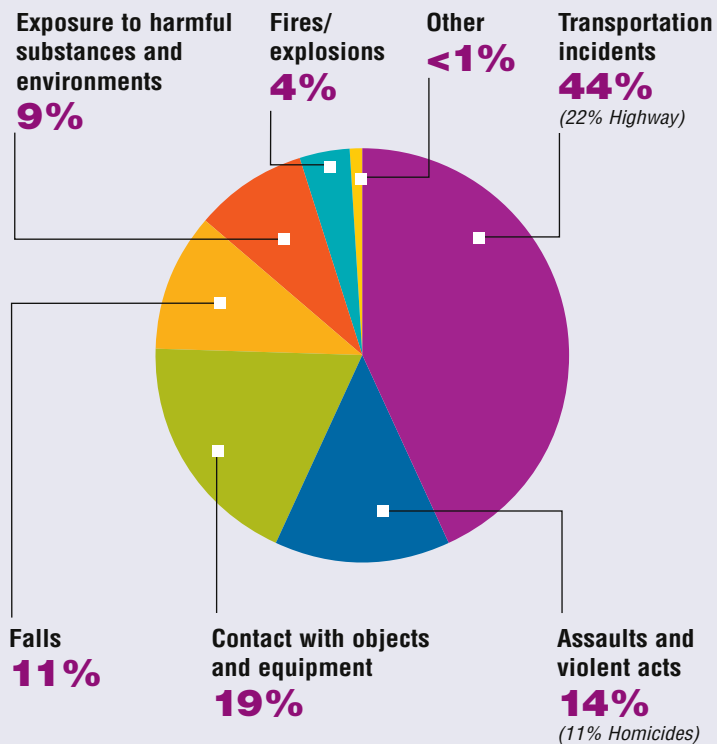
## WORK-RELATED FATALITY NUMBERS AND RATES\*



EMPLOYEE STATUS		GENDER		AGE		RACE	
Wage/Salary worker	<b>780</b>	Male	<b>894</b>	Under 20	<b>34</b>	White	<b>843</b>
Self-employed	<b>216</b>	Female	<b>102</b>	20 to 34	<b>258</b>	Black/African American	<b>83</b>
				35 to 54	<b>454</b>	Hispanic/Latino	<b>10</b>
				55 and older	<b>249</b>	Other races/Not reported	<b>60</b>

\*Please see caveats regarding the calculation of State rates in the State Profiles section introduction page and appendix II.

## WORK-RELATED FATALITIES BY EVENT



## OCCUPATIONS WITH THE MOST FATALITIES

OCCUPATION	NUMBER (%)
Transportation and material moving occupations	200 (20%)
Handlers, equipment cleaners, helpers, and laborers	134 (13%)
Farming operators and managers	108 (11%)
Construction trades	95 (10%)
Executive, administrative, and managerial	73 (7%)



## WORK-RELATED FATALITIES BY MAJOR INDUSTRY

