

Total fatalities, 1995–99: **255**

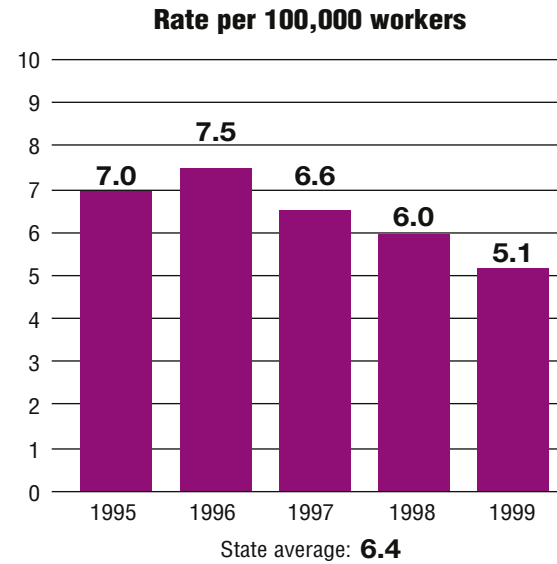
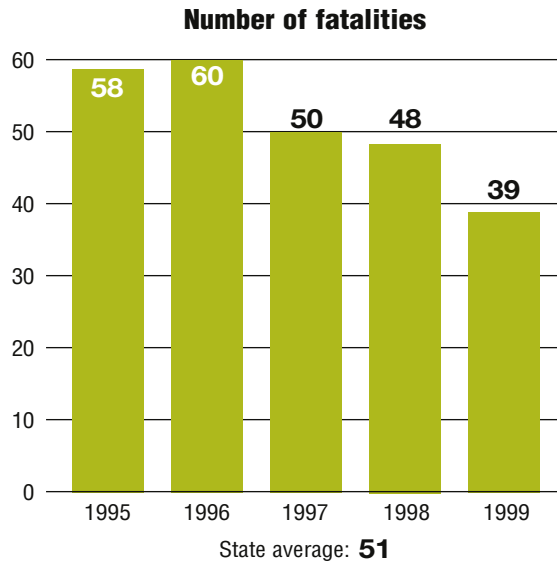
Average fatalities per year: **51**

Five-year average fatality rate: **6.4**



# New Mexico

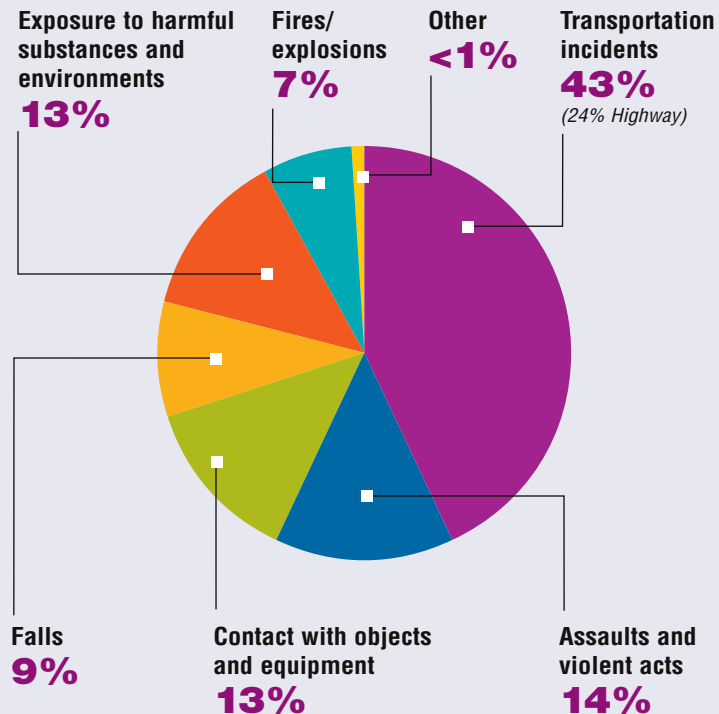
## WORK-RELATED FATALITY NUMBERS AND RATES\*



EMPLOYEE STATUS		GENDER		AGE		RACE	
Wage/Salary worker	<b>206</b>	Male	<b>237</b>	Under 20	<b>6</b>	White	<b>142</b>
Self-employed	<b>49</b>	Female	<b>18</b>	20 to 34	<b>71</b>	Black/African American	<b>7</b>
				35 to 54	<b>136</b>	Hispanic/Latino	<b>93</b>
				55 and older	<b>41</b>	Other races/Not reported	<b>13</b>

\*Please see caveats regarding the calculation of State rates in the State Profiles section introduction page and appendix II.

## WORK-RELATED FATALITIES BY EVENT

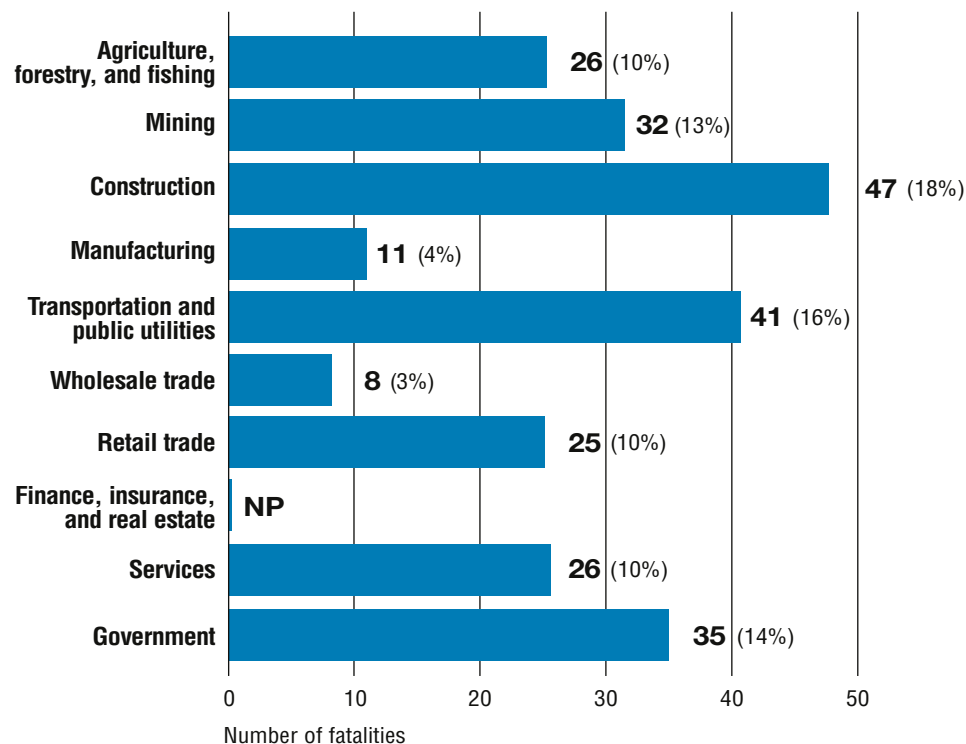


## OCCUPATIONS WITH THE MOST FATALITIES

OCCUPATION	NUMBER (%)
Transportation and material moving occupations	59 (23%)
Construction trades	28 (11%)
Handlers, equipment cleaners, helpers, and laborers	22 (9%)
Sales occupations	19 (7%)
Mechanics and repairers	14 (5%)
Other agricultural and related occupations	14 (5%)



## WORK-RELATED FATALITIES BY MAJOR INDUSTRY



NP indicates no data reported or data that do not meet publication criteria.