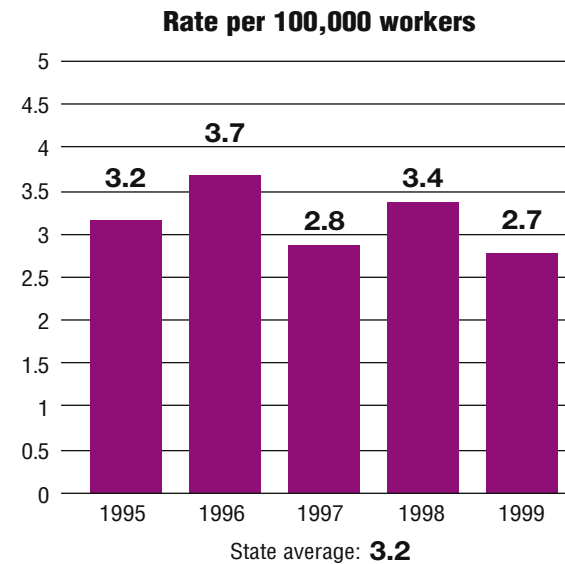
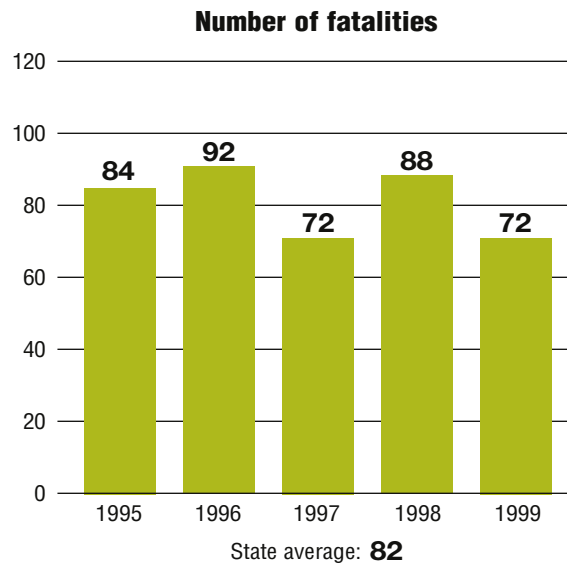


Total fatalities, 1995–99:	408
Average fatalities per year:	82
Five-year average fatality rate:	3.2



Minnesota

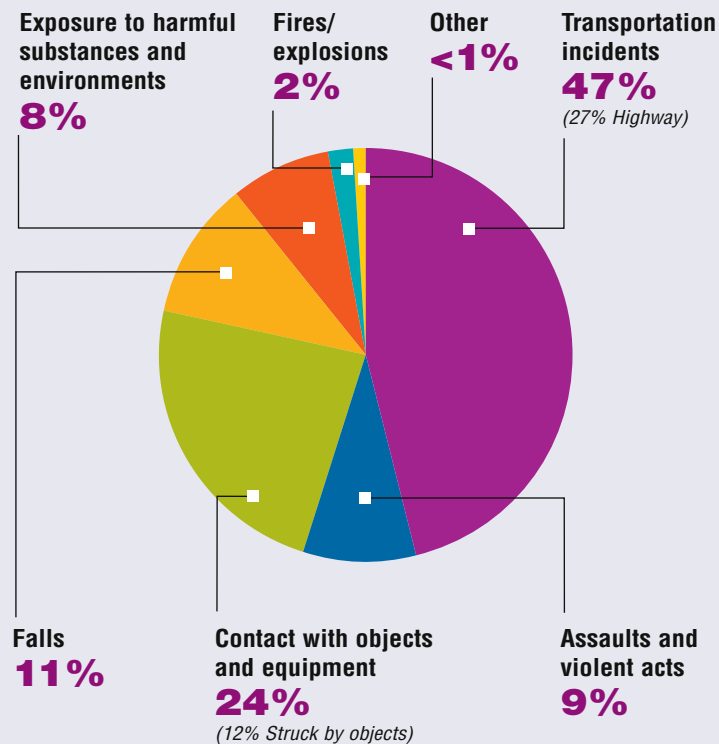
WORK-RELATED FATALITY NUMBERS AND RATES*



EMPLOYEE STATUS		GENDER		AGE		RACE	
Wage/Salary worker	288	Male	383	Under 20	14	White	378
Self-employed	120	Female	25	20 to 34	92	Black/African American	6
				35 to 54	181	Hispanic/Latino	6
				55 and older	120	Other races/Not reported	18

*Please see caveats regarding the calculation of State rates in the State Profiles section introduction page and appendix II.

WORK-RELATED FATALITIES BY EVENT

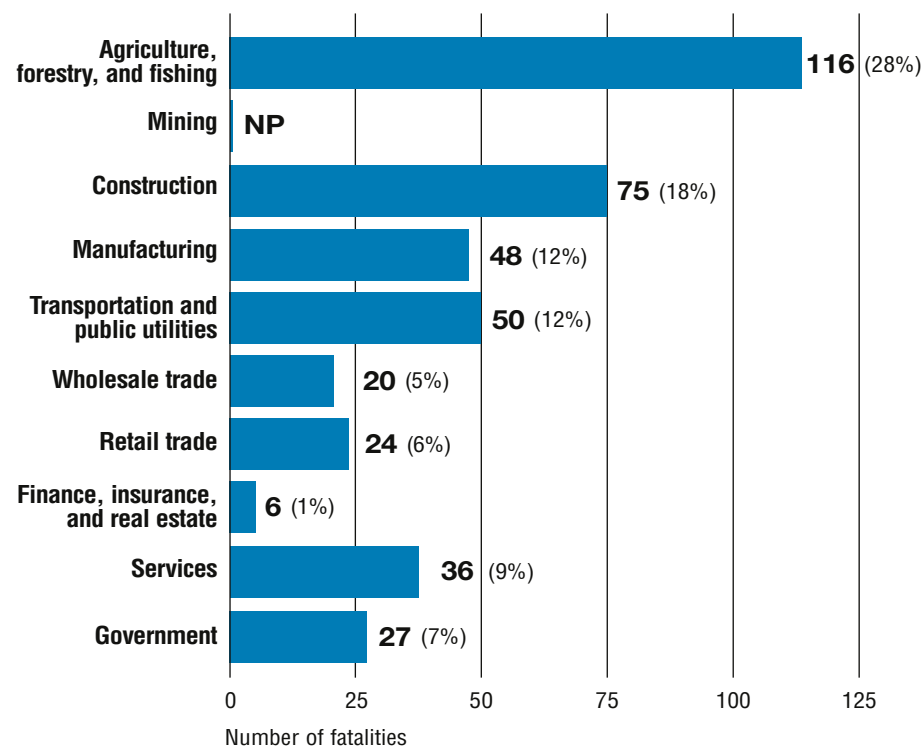


OCCUPATIONS WITH THE MOST FATALITIES

OCCUPATION	NUMBER (%)
Farming operators and managers	85 (21%)
Transportation and material moving occupations	67 (16%)
Construction trades	44 (11%)
Handlers, equipment cleaners, helpers, and laborers	39 (10%)
Other agricultural and related occupations	33 (8%)



WORK-RELATED FATALITIES BY MAJOR INDUSTRY



NP indicates no data reported or data that do not meet publication criteria.