

Total fatalities, 1995–99: **839**

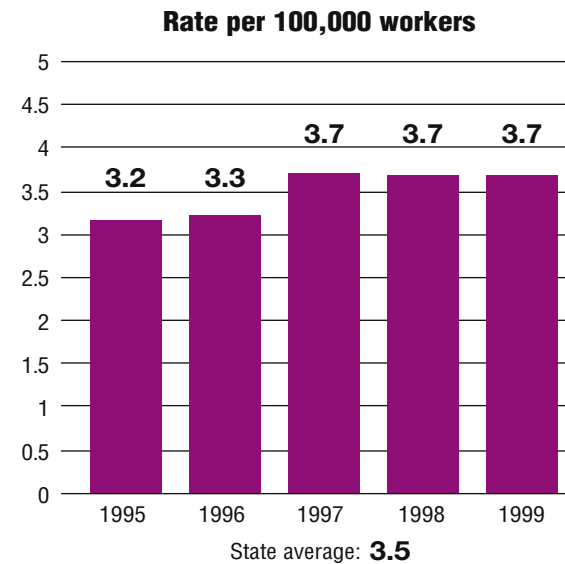
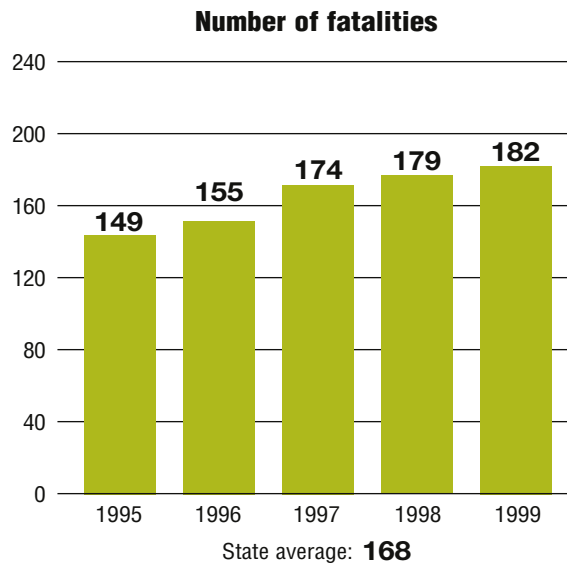
Average fatalities per year: **168**

Five-year average fatality rate: **3.5**



Michigan

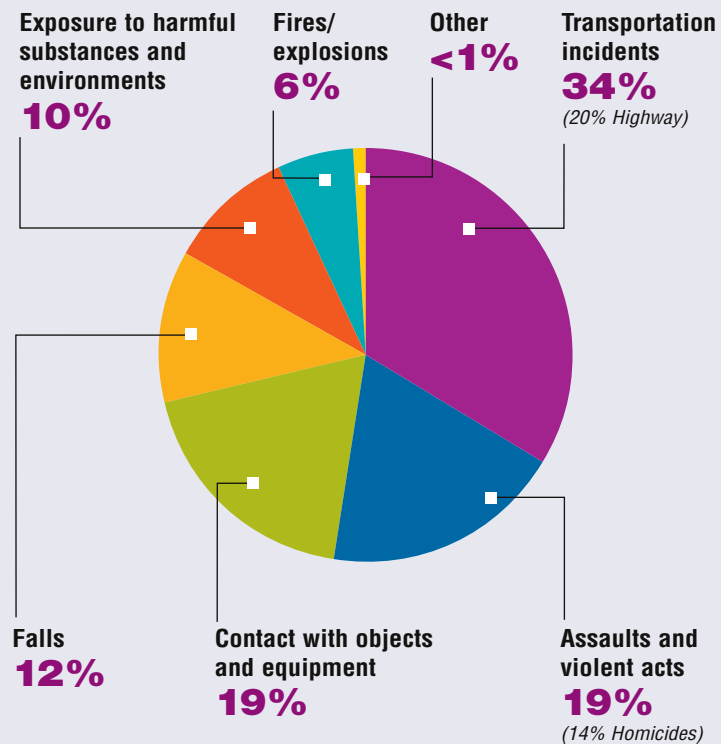
WORK-RELATED FATALITY NUMBERS AND RATES*



EMPLOYEE STATUS		GENDER		AGE		RACE	
Wage/Salary worker	723	Male	753	Under 20	39	White	675
Self-employed	116	Female	86	20 to 34	244	Black/African American	88
				35 to 54	377	Hispanic/Latino	27
				55 and older	179	Other races/Not reported	49

*Please see caveats regarding the calculation of State rates in the State Profiles section introduction page and appendix II.

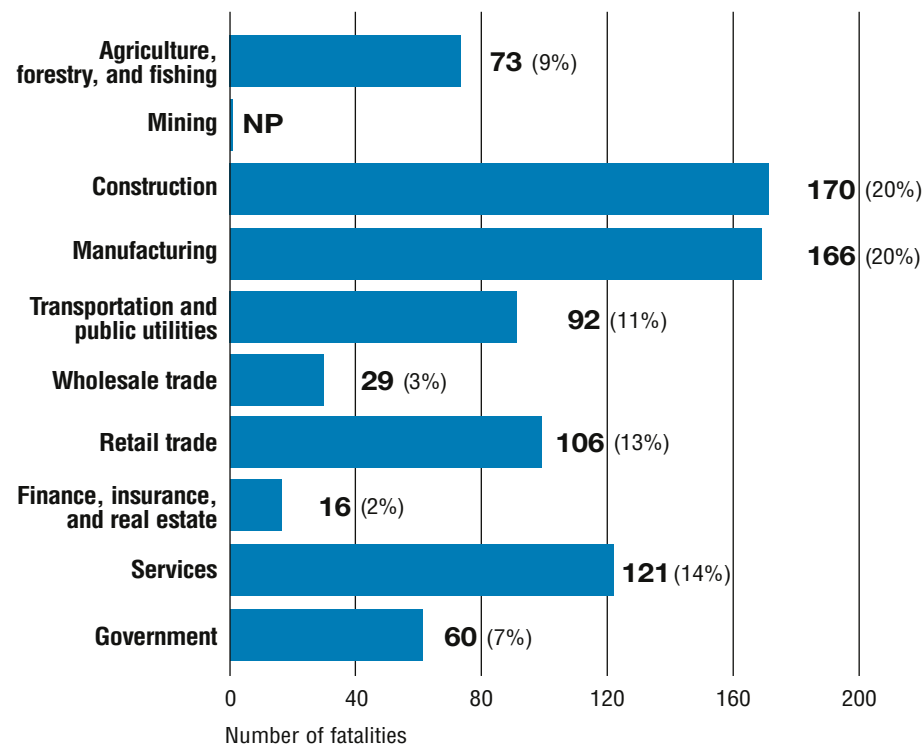
WORK-RELATED FATALITIES BY EVENT



OCCUPATIONS WITH THE MOST FATALITIES

OCCUPATION	NUMBER (%)
Handlers, equipment cleaners, helpers, and laborers	121 (14%)
Transportation and material moving occupations	119 (14%)
Construction trades	97 (12%)
Executive, administrative, and managerial	95 (11%)
Machine operators, assemblers, and inspectors	59 (7%)

WORK-RELATED FATALITIES BY MAJOR INDUSTRY



NP indicates no data reported or data that do not meet publication criteria.