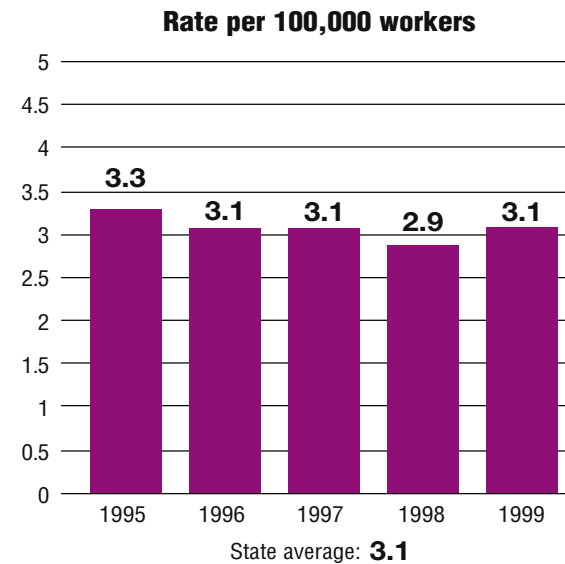
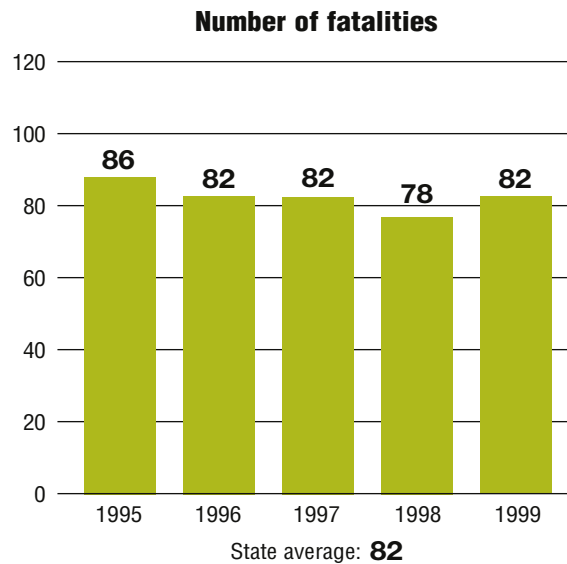


Total fatalities, 1995–99:	410
Average fatalities per year:	82
Five-year average fatality rate:	3.1

Maryland

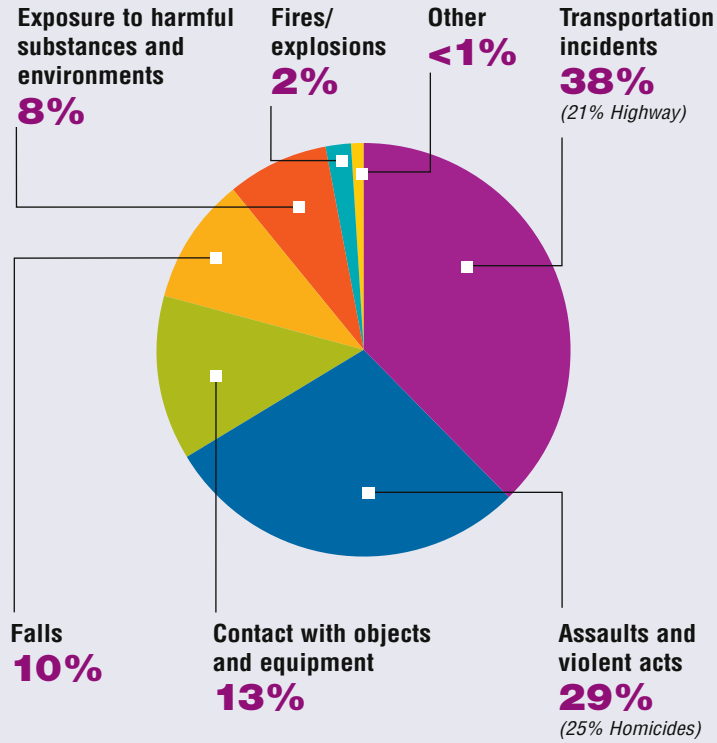
WORK-RELATED FATALITY NUMBERS AND RATES*



EMPLOYEE STATUS		GENDER		AGE		RACE	
Wage/Salary worker	327	Male	374	Under 20	10	White	270
Self-employed	83	Female	36	20 to 34	113	Black/African American	96
				35 to 54	204	Hispanic/Latino	15
				55 and older	83	Other races/Not reported	29

*Please see caveats regarding the calculation of State rates in the State Profiles section introduction page and appendix II.

WORK-RELATED FATALITIES BY EVENT

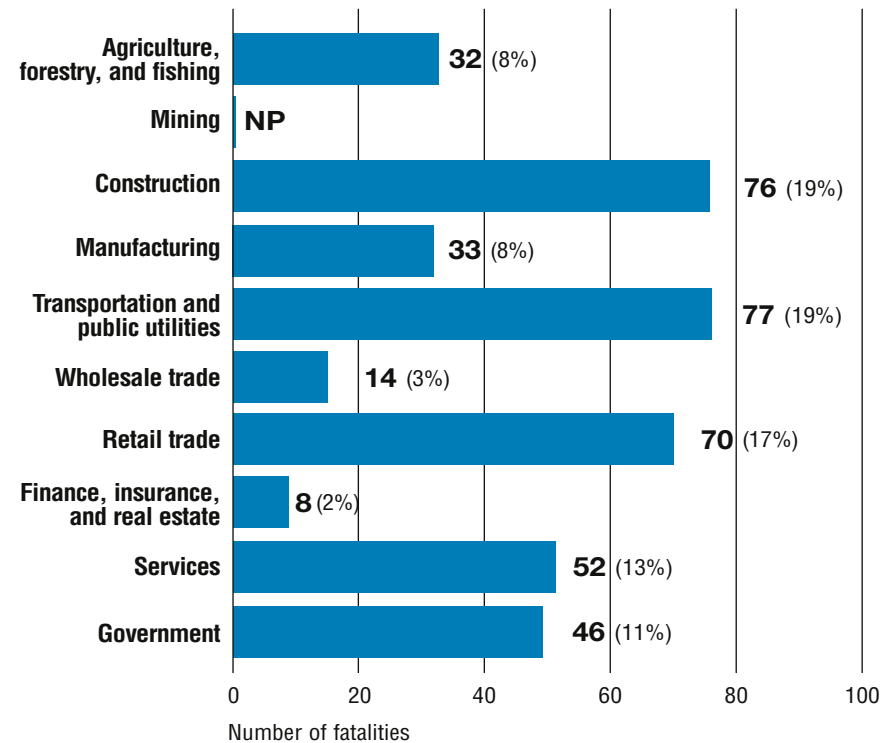


OCCUPATIONS WITH THE MOST FATALITIES

OCCUPATION	NUMBER (%)
Transportation and material moving occupations	87 (21%)
Handlers, equipment cleaners, helpers, and laborers	50 (12%)
Construction trades	43 (10%)
Executive, administrative, and managerial	37 (9%)
Sales occupations	37 (9%)



WORK-RELATED FATALITIES BY MAJOR INDUSTRY



NP indicates no data reported or data that do not meet publication criteria.