

Total fatalities, 1995–99: **368**

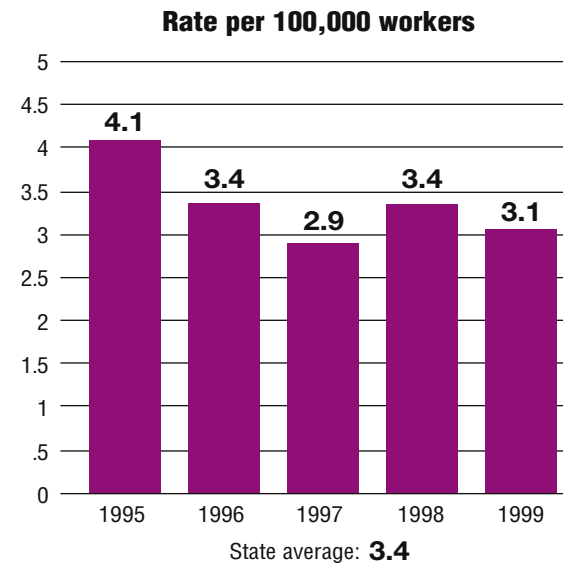
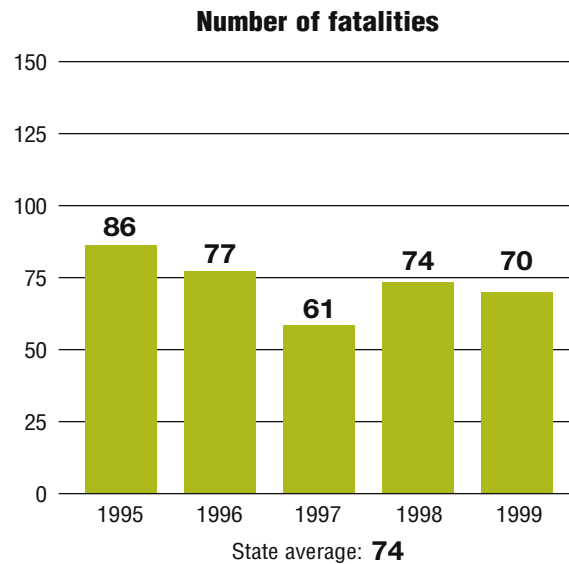
Average fatalities per year: **74**

Five-year average fatality rate: **3.4**



# Arizona

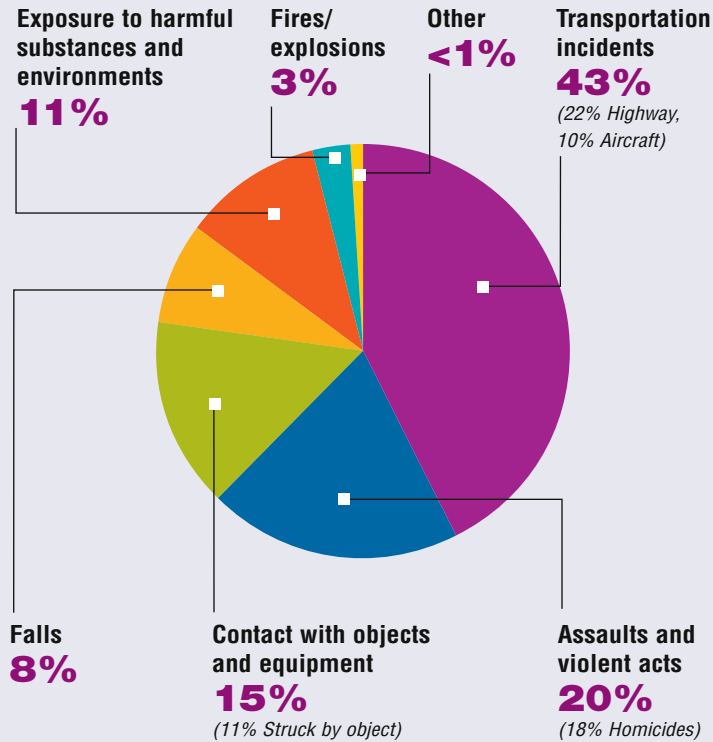
## WORK-RELATED FATALITY NUMBERS AND RATES\*



EMPLOYEE STATUS		GENDER		AGE		RACE	
Wage/Salary worker	<b>335</b>	Male	<b>329</b>	Under 20	<b>10</b>	White	<b>233</b>
Self-employed	<b>33</b>	Female	<b>39</b>	20 to 34	<b>127</b>	Black/African American	<b>11</b>
				35 to 54	<b>170</b>	Hispanic/Latino	<b>94</b>
				55 and older	<b>60</b>	Other races/Not reported	<b>30</b>

\*Please see caveats regarding the calculation of State rates in the State Profiles section introduction page and appendix II.

## WORK-RELATED FATALITIES BY EVENT



## OCCUPATIONS WITH THE MOST FATALITIES

OCCUPATION	NUMBER (%)
Transportation and material moving occupations	59 (16%)
Handlers, equipment cleaners, helpers, and laborers	46 (13%)
Construction trades	45 (12%)
Executive, administrative, and managerial	37 (10%)
Protective service occupations	25 (7%)

## WORK-RELATED FATALITIES BY MAJOR INDUSTRY

